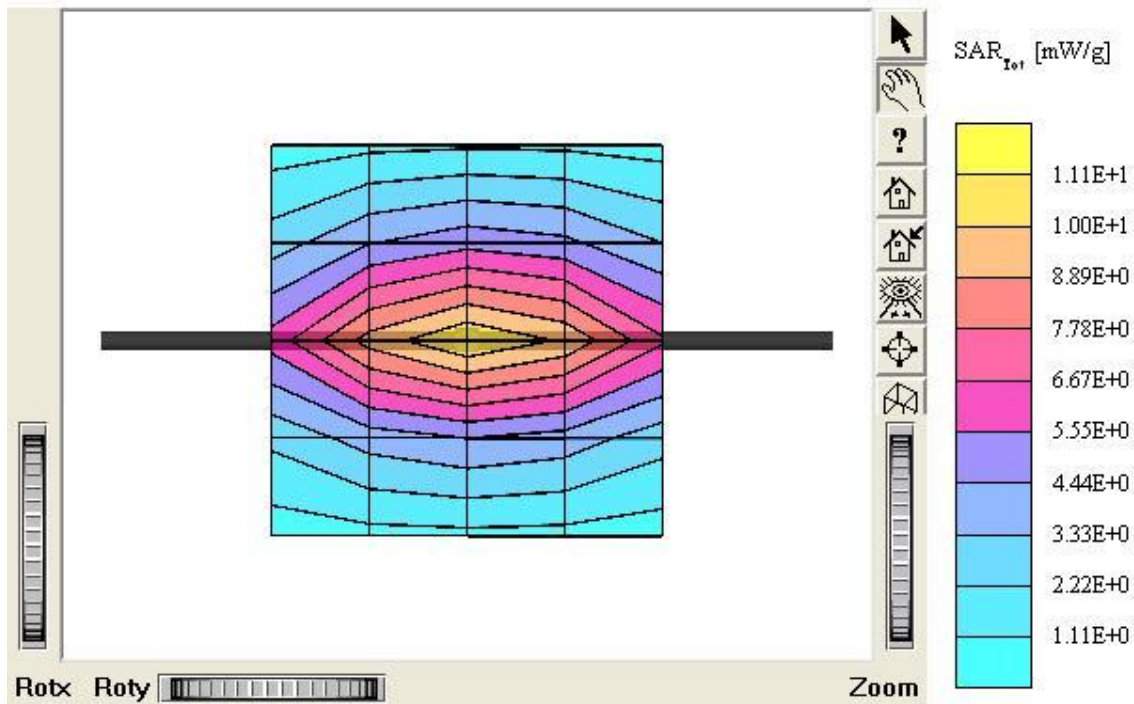


## ATTACHMENT Q – DIPOLE VALIDATION

### ■ Validation Data (835MHz Head)

#### Dipole 835 MHz

SAM I Phantom; Flat Section; Position: (90°,90°); Frequency: 835 MHz  
 Probe: ET3DV6 - SN1609; ConvF(6.63,6.63,6.63); Crest factor: 1.0; Head 835 MHz:  $\sigma = 0.88$  mho/m  $\epsilon_r = 42.1$   $\rho = 1.00$  g/cm<sup>3</sup>  
 Cube 5x5x7: SAR (1g): 10.1 mW/g, SAR (10g): 6.56 mW/g  
 Coarse: Dx = 20.0, Dy = 20.0, Dz = 10.0  
 Powerdrift: -0.01 dB  
 Comment :  
 835MHz Brain Dipole Validation (D835V2/ S.N: 441)  
 Antenna Input Power: 30 dBm (1 W)  
 HCT Co., Ltd. Brain Tissue Simulating Liquid  
 Liquid Temperature : 21.8°C  
 Date Tested : August 26, 2005



## Dipole 835 MHz

SAM I Phantom; Section; Position: ; Frequency: 835 MHz

Probe: ET3DV6 - SN1609; ConvF(6.63,6.63,6.63); Crest factor: 1.0; Head 835 MHz:  $\sigma = 0.88 \text{ mho/m}$   $\epsilon_r = 42.1$   $\rho = 1.00 \text{ g/cm}^3$

:

Z-Axis:  $D_x = 0.0$ ,  $D_y = 0.0$ ,  $D_z = 5.0$

Comment :

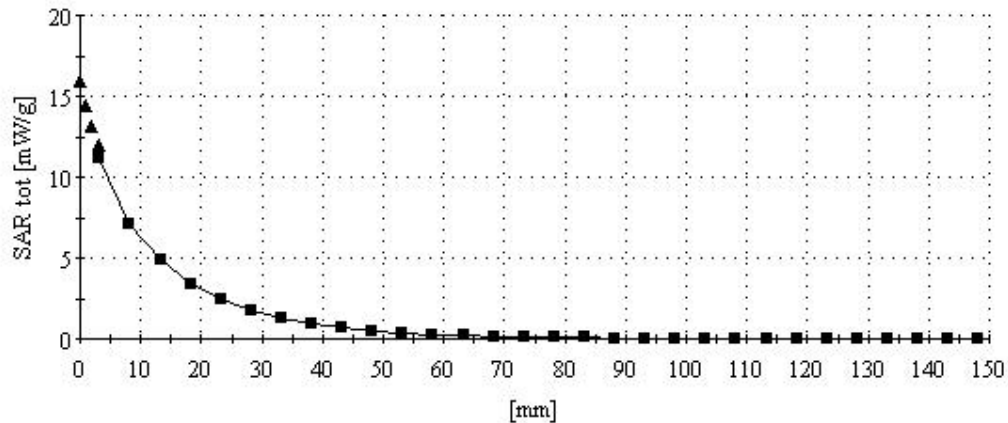
835MHz Brain Dipole Validation (D835V2/ S.N: 441)

Antenna Input Power: 30 dBm (1 W)

HCT Co., Ltd. Brain Tissue Simulating Liquid

Liquid Temperature : 21.8°C

Date Tested : August 26, 2005





Title: Haier Single Mode CDMA Phone  
Model D1000  
To: PART 22

Serial No.: SL050821/RF/01  
Issue Date: August 30, 2005  
Page: 3 of 4

[www.siemic.com](http://www.siemic.com)

■ Dielectric Parameter (835MHz Head)

**Title : D1000**  
**SubTitle : CDMA HEAD**  
August 26, 2005 09:12 AM

| Frequency      | e'      | e''     |
|----------------|---------|---------|
| 800.000000 MHz | 42.6106 | 19.0402 |
| 805.000000 MHz | 42.5453 | 19.0177 |
| 810.000000 MHz | 42.4893 | 19.0253 |
| 815.000000 MHz | 42.4571 | 19.0370 |
| 820.000000 MHz | 42.3652 | 18.9854 |
| 825.000000 MHz | 42.3123 | 18.9926 |
| 830.000000 MHz | 42.1865 | 18.9624 |
| 835.000000 MHz | 42.0927 | 19.0027 |
| 840.000000 MHz | 42.0405 | 18.9265 |
| 845.000000 MHz | 41.9520 | 18.9031 |
| 850.000000 MHz | 41.8743 | 18.8772 |
| 855.000000 MHz | 41.7542 | 18.8434 |
| 860.000000 MHz | 41.7505 | 18.8177 |
| 865.000000 MHz | 41.6559 | 18.8287 |
| 870.000000 MHz | 41.5638 | 18.8088 |
| 875.000000 MHz | 41.3903 | 18.7829 |
| 880.000000 MHz | 41.3949 | 18.7408 |
| 885.000000 MHz | 41.2539 | 18.8320 |
| 890.000000 MHz | 41.1843 | 18.7872 |
| 895.000000 MHz | 41.1010 | 18.7768 |
| 900.000000 MHz | 41.0814 | 18.7775 |



Title: Haier Single Mode CDMA Phone  
Model D1000  
To: PART 22

Serial No.: SL050821/RF/01  
Issue Date: August 30, 2005  
Page: 4 of 4

[www.siemic.com](http://www.siemic.com)

■ Dielectric Parameter (835MHz Head)

**Title : D1000**  
**SubTitle : CDMA BODY**  
August 26, 2005 01:56 PM

| Frequency      | e'      | e''     |
|----------------|---------|---------|
| 800.000000 MHz | 53.8208 | 20.6370 |
| 805.000000 MHz | 53.7156 | 20.5852 |
| 810.000000 MHz | 53.6630 | 20.5830 |
| 815.000000 MHz | 53.6349 | 20.5833 |
| 820.000000 MHz | 53.6179 | 20.5963 |
| 825.000000 MHz | 53.5498 | 20.5721 |
| 830.000000 MHz | 53.5602 | 20.6245 |
| 835.000000 MHz | 53.4579 | 20.6512 |
| 840.000000 MHz | 53.4407 | 20.6362 |
| 845.000000 MHz | 53.4583 | 20.6845 |
| 850.000000 MHz | 53.4338 | 20.7042 |
| 855.000000 MHz | 53.3690 | 20.6414 |
| 860.000000 MHz | 53.3982 | 20.6841 |
| 865.000000 MHz | 53.3479 | 20.6272 |
| 870.000000 MHz | 53.3080 | 20.6523 |
| 875.000000 MHz | 53.2201 | 20.6317 |
| 880.000000 MHz | 53.1832 | 20.6027 |
| 885.000000 MHz | 53.1363 | 20.5041 |
| 890.000000 MHz | 53.0619 | 20.4693 |
| 895.000000 MHz | 52.9687 | 20.3694 |
| 900.000000 MHz | 52.8949 | 20.3982 |