

ENGLISH

Contents

BT Drive Free 112 Bluetooth Car Kits	15
Bluetooth technology	16
Safety and general information	16
Disposal notes	17
Scope of delivery	17
Installation on the steering wheel	17
Overview	18
Battery information	18
Charging the battery	19
Switching on/off	20
Registering (pairing) and connecting with the cell phone	20
Multi-connection function	21
Establishing a connection with two cell phones	21
Using the BT Drive Free 112	22
Resetting the BT Drive Free 112	24
Light indicators and signal tones	24
Fault removal	25
Declaration of conformity	25
Warranty	25
Technical data	26

BT Drive Free 112

This wireless Bluetooth hands-free system was developed specifically for users who want to use their cell phone while driving. The multi-connection function allows the simultaneous use of the BT Drive Free 112 with two cell phones. Its improved microphone system and DSP technology for echo cancelling and noise suppression achieve an excellent hand-free quality.

Bluetooth technology

Bluetooth™ is a registered trademark of Bluetooth SIG, inc. Bluetooth is a wireless communication technology with short range. It enables wireless connections between all compatible portable and stationary communication devices. The technology is based on a radio connection that ensures a fast and reliable transmission of voice and data information.

Bluetooth is oriented to the worldwide applicable standard for operating in the internationally recognized ISM frequency band (Industrial Scientific & Medical). Within the ISM band (2.4 GHz to 2.48 GHz), the Bluetooth transmission operates 1600 times per second between 79 different frequencies with a data transmission range of up to 10 meters (Class 2).

Safety and general information

- Carefully read the operating instructions and follow the instructions.
- Observe all locally applicable laws for the use of cell phones and hands-free systems while driving. Operate the BT Drive Free 112 only if the traffic situation allows it and you are not creating a risk for other traffic participants.
- To avoid any damages and malfunctions, do not drop the device from an elevated height.
- Protect the device against humidity, water and other liquids. If the device should have been exposed to water, humidity or other liquids do not use it since it may lead to damages of the device and to injuries from electrical shock or explosion.
- Do not expose the device to extreme heat sources, such as direct sunlight. This can cause explosions as well as reduce the performance and/or service life of the battery.
- Do not make any changes or repairs to the device and do not attempt to disassemble it. (Particularly not on the battery since the risk of explosion exists.) It will immediately void the warranty.
- Do not place any heavy objects on the device.
- Use only the supplied charger.
- Repairs and service work may be performed only by a qualified service center or the manufacturer.
- In case of extended non-use or thunderstorms, disconnect the device from the power supply.

16

Disposal notes

Use the return and collection systems available to dispose of the old Device.

Scope of delivery

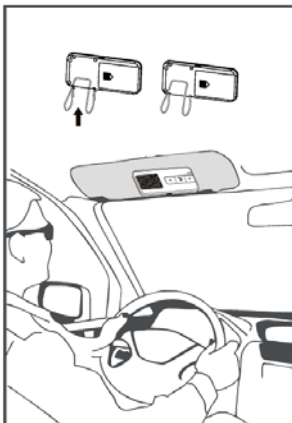
The scope of delivery includes:

- BT Drive Free 112
- 12-volt DC vehicle charger adapter
- USB charger cable
- Sun visor mounting clip
- Operating instructions

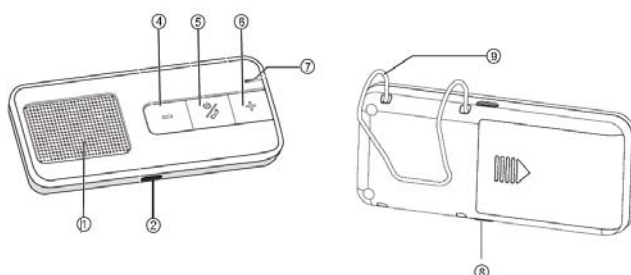
Installation at the sun visor

Sun visor flipped up towards the vehicle roof.

Sun visor flipped down towards the windshield.



Overview



1. MF button (illuminated multifunction button)
2. Loudspeaker
3. Decrease volume (-)
4. Increase volume (+)
5. Mute
6. Microphone
7. Charging socket (micro USB port)

Battery information

The device is equipped with an integrated lithium-polymer battery. The battery cannot be replaced. Do not attempt to remove the battery from the device since it would damage the device. The full performance of a new battery is not achieved until after two or three complete charging-discharging cycles. The battery can be charged and discharged several hundred times, but it loses its capacity over time.

Disconnect the BT Drive Free 112 from the power supply as soon as the battery is fully charged, since overcharging would reduce the service life of the battery. A charged battery loses its capacity if it is not used. Important: Ensure that the battery is fully charged if you do not use the device for a longer period of time. To avoid a complete discharge of the battery, the BT Drive Free 112 should be charged at least every 2 months.

Charging the battery

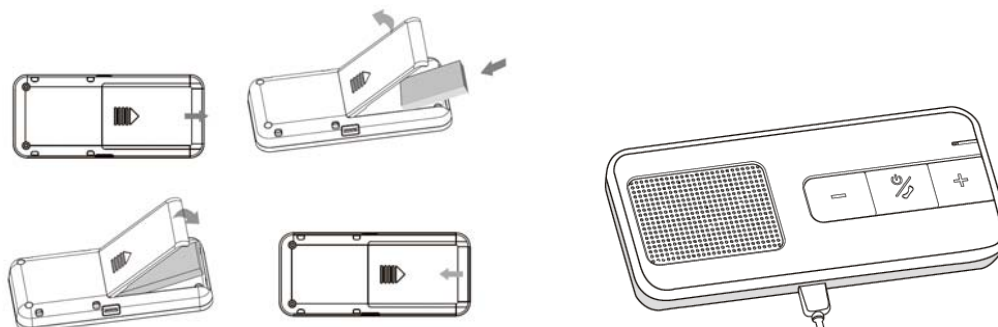
The BT Drive Free 112 is operated with a rechargeable battery. Charge the battery completely before its first use. Read the section "Battery information" before starting the charging process.

You have to remove the BT Drive Free 112 from the Sun visor for the charging procedure. Connect the BT Drive Free 112 with the vehicle charging adapter via the USB cable. Insert the vehicle charging adapter into the cigarette lighter of the vehicle. The BT Drive Free 112 can also be charged with the USB cable connected to the computer.

Note: As soon as the charger is connected, the BT Drive Free 112 switches off.

During the charging process, the MF button lights red. After the battery is full charged, the MF button lights blue. The charging process of the battery lasts approx. 3 hours. Disconnect the BT Drive Free 112 from the charger after it has been charged.

A completely charged battery supports a talk time of up to 15 hours and a standby time of up to 500 hours. If the charge state of the battery becomes low, the MF button flashes red every 3 seconds and you hear a warning beep every 20 seconds.



Note:

For using the BT DF 112 with iPhone or Blackberry, an additional battery meter feature will be activated, the remaining battery capacity will display on your phone.



Switching on/off

Switching on

To switch the unit on, press the MF button for approx. 3 seconds until you hear a high-pitched signal tone and the MF button lights blue. Afterwards, the MF button lights blue and the device are switched on.

Switching off

To switch the unit off, press the MF button for approx. 3 seconds until you hear a low-pitched signal tone and the MF button lights red. Afterwards, the device is switched off.

Registering (pairing) and connecting with the cell phone

Before you can use the BT Drive Free 112, you must register and connect it with a Bluetooth-ready cell phone. Registering is a one-time process and required only for the first connection with the cell phone. The BT Drive Free 112 can be registered with up to eight cell phones and be connected simultaneously with two cell phones.

- Hold the BT Drive Free 112 within range of a Bluetooth-ready cell phone; the distance should

not exceed a 1 meter.

- The BT Drive Free 112 must be switched off .
- Press the MF button for approx. 6 seconds until you hear a low-pitched signal tone and the MF button intermittently flashes red and blue. The device is in registration mode.
- Activate the Bluetooth function of the cell phone and start the search for Bluetooth devices. (For further details, please read the operating instructions of your cell phone).
- From the list of devices found, select the "BT DF 112".
- If required, enter the PIN code "0000" and confirm the entry. If the pairing process was successful, you hear a signal tone and the MF button lights blue for 3 seconds. (Note: The PIN code is preprogrammed and cannot be changed.)
- After registering, the BT Drive Free 112 automatically connects with the cell phone. For some cell phones, you have to manually confirm the connection. Next, the BT Drive Free 112 changes to standby mode and the MF button flashes blue every 3 seconds.

Note: If the registering is not completed within 2 minutes, the BT Drive Free 112 switches off again. In this case, repeat the registering.

Multi-connection function

The multi-connection function allows the simultaneous use of the BT Drive Free 112 with two cell phones. This is advantageous for users with a personal and a business cell phone.

Establishing a connection with two cell phones

There are several options of connecting the BT Drive Free 112 with already registered cell phones.

- Automatic connection

When switching on the BT Drive Free 112, a connection is automatically established with the two most recently connected cell phones.

- Establishing a connection via the BT Drive Free 112

To manually establish a connection between the BT Drive Free 112 and the two most recently connected cell phones, press the MF button. The BT Drive Free 112 first connects itself with the most recently connected cell phone. Then it connects itself with the next most recently connected one.

- Establishing a connection via the cell phone

If the cell phone is not one of the two most recently connected cell phones with the BT Drive Free 112, you have to establish the connection via the Bluetooth menu of the cell phone. After successful connection, you can establish another connection with a second cell phone. This allows you to determine the sequence of connections.

If two cell phones are connected with the BT Drive Free 112, the cell phone connected first is the first device and the other one the second device. Another connection can be established only after first disconnecting one of the two cell phones. The cell phone which is still connected afterwards becomes the first device in the sequence.

Note that voice dialing is available only for the first device and the operation for redialing the last number differs for the first and the second device. The other functions are executed the same way using the BT Drive Free 112 as a connection with only one cell phone.

Using the BT Drive Free 112

After successfully completing the registration and charging the battery, the following functions can be executed:

Making a call

- Voice dialing*

To activate voice dialing, briefly press the MF button. You hear several signal tones. After the signal tone, speak the voice command. After the voice command has been recognized, the cell phone dials the number associated with it.

Note: If two cell phones are connected with the BT Drive Free 112, the voice commands are directed only to the cell phone connected first.

- Redialing the last number*

Press the MF button twice. You hear a signal tone and the number dialed last are being redialed.

Note: If two cell phones are connected with the BT Drive Free 112, hold the " - " button pressed for 2 seconds to dial the last number of the cell phone connected last.

- Call origination via cell phone

Select the desired number as usual via the cell phone. The call is automatically transferred to the BT Drive Free 112.

Answering a call

To answer an incoming call, briefly press the MF button.

Ending a call

Briefly press the MF button to end a call.

Rejecting a call*

To reject a call, hold the MF button pressed until you hear a signal tone.

Adjusting the volume

During a phone call, adjust the volume with the buttons "+" and " - ".

Muting the microphone

To mute the microphone during a call, briefly press the "Mode" button. The MF button flashes red every 10 seconds and you hear two signal tones. Repeat the action to cancel mute.

Transferring a call

To transfer a call from the BT Drive Free 112 to the cell phone, press the "Mode" button for approx 3 seconds. Repeat the action to transfer the call back to the BT Drive Free 112.

Note: With some cell phones, the connection is disconnected if you transfer the call to the cell phone. To transfer the call back to the BT Drive Free 112, you have to press the MF button instead of the "Mode" buttons.

Managing calls*

You can answer and manage two calls on one of the connected cell phones via the BT Drive Free 112.

Update the Table for BT DF 112!

You receive a call during an active call	
Hold the active call and answer the incoming call.	Press the MF button for 2 seconds.
End the active call and answer the incoming call.	Briefly press the MF button.
Continue the active call and reject the incoming call.	Press the MF button twice.
You are conducting two calls, an active one and one on hold	
Change between the active call and the one on hold.	Press the MF button for 2 seconds.
End the active call and answer the call on hold.	Briefly press the MF button.
Continue the active call and end the call on hold.	Press the MF button twice.
Continue the active call and answer the call on hold.	Press the "+" button for 2 seconds.

Note: You do not have the option of managing several calls from two connected cell phones at the same time. When you receive a call on one cell phone while a call is active on the other cell phone, the active call is being ended when you answer the incoming call by briefly pressing the MF button.

* The cell phone must support this function. You find the pertinent information in the operating instructions of the cell phone.

Resetting the BT Drive Free 112

The BT Drive Free 112 can be registered with up to eight cell phones. You can delete the registration list and reset the hands-free system to the factory settings.

- The BT Drive Free 112 must be switched on and no connection may exist to a cell phone.
- Press and hold down the "+" and "-" buttons simultaneously for approx. 10 seconds until the MF button intermittently flashes lights red and blue.
- If the registration list was deleted, the MF button stops flashing intermittently.
- After the next switch-on, the BT Drive Free 112 is in registration mode.

Update the Table for BT DF 112!

Light indicators and signal tones

Device status	MF button	Signal tones
Switching on	Lights blue for 3 seconds	1 high-pitched sound
Switching off	Lights red for 3 seconds	1 low-pitched sound
Registration mode	Flashes red and blue	

	alternately	
Standby mode without connection	Flashes blue once every 3 seconds	
Standby mode with connection	Lights blue every 3 seconds	
Incoming call	Flashes blue	
Active call	Flashes blue once every 2 seconds	
Mute	Flashes red once every 10 seconds	2 tones every 10 seconds
Low battery	Flashes red once every 3 seconds	5 tones every 20 seconds
Battery is charging	Lights red. Lights blue after the battery is fully charged.	

[Music streaming]

BT DF 112 supports A2DP profile that can stream stereo music from an A2DP-enable phone.

If there is an incoming call received while the music streaming, the music will be paused automatically, and resume the playing while the call is end.

Fault removal

If a connection between the BT Drive Free 112 and a cell phone cannot be established, observe the following:

- Ensure that the battery is charged.
- Ensure that the Bluetooth function of the cell phone is activated. You find more detailed information in the operating instructions of the cell phone.
- Check whether the BT Drive Free 112 is connected with the cell phone.
- Ensure that the distance between the BT Drive Free 112 and a registered cell phone is less than 10 meters and that no obstacles are between the two devices. Obstacles can interfere with the transmission or reduce the range.
- If none of these measures is successful, please contact the service department of your distributor.
- The BT Drive Free 112 meets the Bluetooth specification v2.1 + EDR. The flawless function between the BT Drive Free 112 and Bluetooth-ready cell phones from different manufacturers and of different types cannot be guaranteed since it depends on the compatibility.

Declaration of conformity

The Blaupunkt AudioVision GmbH & Co. KG declares that this product complies with the basic

requirements and the other relevant regulations of the directive 1999/5/EC. The declaration of conformity can be found on the Internet under www.blaupunkt.com.

Warranty

We provide a manufacturer's warranty for products bought within the European Union. For devices purchased outside the European Union, the warranty terms issued by our respective responsible domestic agency are valid. The warranty terms can be called up from www.blaupunkt.com.

25

Technical data

Bluetooth specification	Version 2.1 + EDR (Enhanced Data Rate) + SSP (Secure Simple Pairing)*
Supported Bluetooth profiles	Headset and hands-free profiles
Frequency range	2402 to 2480 MHz ISM band
Bluetooth range	Up to 10 metres (Class 2)
Dimensions	107(L) x 48 (W) x 15 (H) mm
Weight	approx. 60g
Battery charging time	approx. 3 hours
Talk time	up to 15 hours
Standby time	up to 500 hours
Battery type:	Li-ion, 3.7 V, 500 mAh, rechargeable, replaceable
Charger	5 V - 6 V DC, 300 mA

* For registering hands-free systems without entering the PIN code if the other Bluetooth device also supports version 2.1.

Subject to change!

FCC WARNING

This device complies with Part 15 of the FCC Rules. Operation is subject to the following two conditions:

- (1) this device may not cause harmful interference, and
- (2) this device must accept any interference received, including interference that may cause undesired operation.

NOTE 1: Any changes or modifications to this unit not expressly approved by the party responsible for compliance could void the user's authority to operate the equipment.