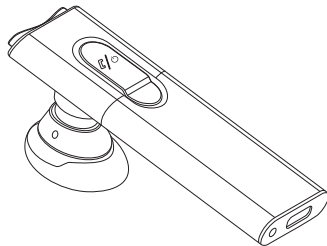




H900

Bluetooth Headset



Made in China

User's Guide

Contents

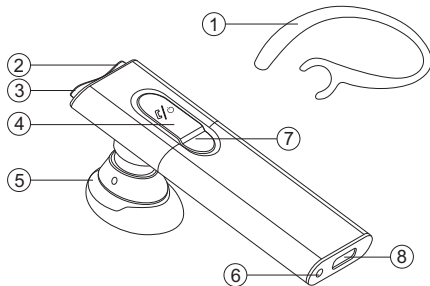
What's in the box	1
Charge the battery	2
Battery information	3
Pair to your Bluetooth phone	4
Turning headset on /off	6
Wearing your headset	7
Making a call	8
Ending a call	8
Reject an incoming call	9
Answering a call	9
Transferring a call	9
Call-waiting (Three-Way Calling)	9
Volume control.....	10
Mute.....	10
Safety and general information.....	11
FCC & IC Statement	12
EU.....	12
Warranty.....	13

1

What's in the box

The headset contains the following parts:

1. Ear Hook
2. Volume Down Button
3. Volume Up Button
4. Multi-function Button
5. Speaker
6. Microphone
7. Indicator Light
8. Charging Socket



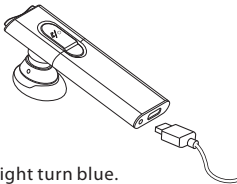
Package Contents List

- A. H900 Bluetooth headset
- B. Travel Charger
- C. USB Cable
- D. User's Guide

2 Charge the battery

This device has a built-in rechargeable battery. Do not attempt to remove the battery from the device as you may damage the device.

1. Connect the charger to the correct outlet.
2. While the charger is connected, the red indicator light displaying during charging. If charging does not start, disconnect the charger, plug it in again, and retry. Charging the battery fully may take up to 2 hours.
3. When the battery is fully charged, the red indicator light turn blue.
Disconnect the charger from the headset and the wall outlet.



The fully charged battery has power for up to 3 hours of talk-time or up to 80 hours of standby time. However, the talk and standby times may vary when used with different mobile phones or other compatible Bluetooth devices, usage settings, usage styles, and environments.

When battery power is low, the headset will remind you by beeps every 20 seconds, and the red indicator light starts to flash.

IMPORTANT NOTICE!

1. For first time use, please charge the headset fully. If you cannot see the indicator light when charging, please leave the headset on the charging for a while (Approx 15-35 Minutes), then the indicator light will be on.
2. If after a full charge, you cannot turn the headset on, please re-plug the headset to the charger for a few second to activate it.

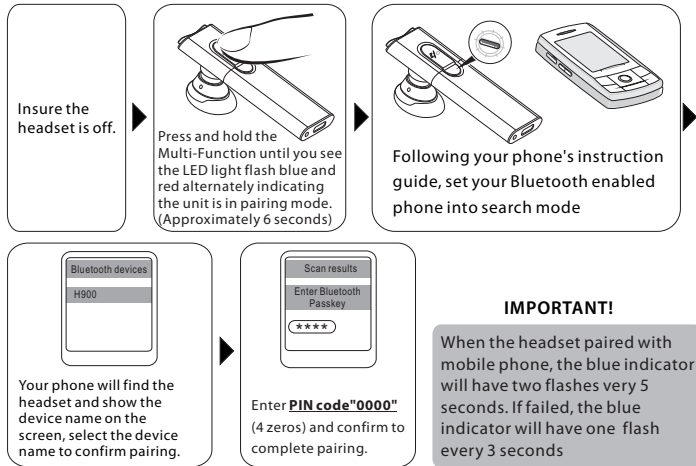
3 Battery information

- Your device is powered by a built-in chargeable battery. The full performance of a new battery is achieved only after two or three complete charge and discharge cycles. The battery can be charged and discharged hundreds of times.
- Unplug the charger from the vehicle and the device when not in use. Do not leave a fully charged battery connected to a charger, since overcharging may shorten its lifetime. If left unused, a fully charged battery will lose its charge over time. If the headset will go unused for a long time, please charge fully and turn off the headset.
- To prevent over discharge endangering the battery, you are recommended to charge the headset fully each month.

4 Pair to your Bluetooth phone

Before you use your headset for the first time, ensure that it is paired to use it with devices such as your Bluetooth phone.

Once you pair the headset with a device, the Headset will be automatically connected to the device wherever you turn the headset on.



NOTE:

- If the pairing is successful, the headset will connect to your phone automatically, you may need to confirm the enquiry on your phone.
- While the headset is paired with the phone and connected, the indication light will flash 2 times every 5 seconds. If failed or didn't connect to the phone, the blue indicator light will flash 1 time every 3 seconds.
- Once you paired the headset with one device or more, the Headset will automatically connect to the phone you last connected wherever you turn the headset on, but make sure your phone's Bluetooth function is active.
- The headset supports Bluetooth v2.1+EDR specification, the simplified pairing process will make pairing your devices easily, if your mobile phone supports Bluetooth v2.1+EDR specification, you just need to turn on both of them, and add the new Bluetooth device on your phone, the headset and your phone will find each other and connect automatically.
- The headset supports multi-point technology. If you need to connect the headset to the 2nd Bluetooth phone, please repeat the pairing operation steps above. When you finish the pairing, turn off the headset and turn it on again, the headset will connect to both 2 phones automatically.

5 Turning headset on /off

*Turn on the headset

If the headset is turned off, press and hold MFB for 2 seconds until you hear a melody from low to high, the headset turns on, the Blue indicator light will flash 3 times at the same time.

*Connects to the phone

1. If your headset has finished the pairing operation successfully, when the headset is turned on, it will connect to the phone(s) you last connected automatically, but make sure your phone's Bluetooth function is active.
2. The headset supports multi-point and connects to 2 phones at the same time. In some operations, you need to distinguish the connection sequence, so we appoint the phone first connected as phone 1, the second one as phone 2.

*Turn off the headset

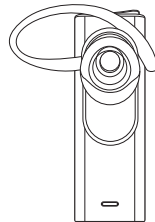
At any working state, press and hold MFB for 4 seconds, you will hear a melody from high to low, and the Red indicator light will flash 3 times at the same time, the headset turns off.

Note

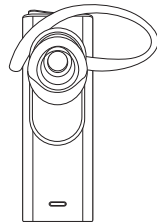
- For saving the power, while the headset didn't connect to any device over 1 hour, the headset will turn off automatically.

6 Wearing your headset

The headset can be worn on either the Left or Right ear. If you want to carry the headset on the other ear, please change the direction of the ear clamp follow the figures below.

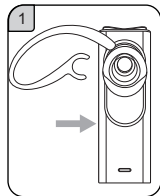


Right



Left

Please wear the headset follow the below.



7 Making a call

* By phone's keypad

At the stand-by state, dial the number on your phone directly to make a call.

* Use Voice-Dialing

At the stand-by state, press the MFB shortly, you will hear a short tone from the headset, and the phone will prompt you say the voice tag like your friend's name. If the voice tag is identified by the phone, the related number will be dial-out later.

Make sure whether your mobile phone supports voice dialing function, and you need to set up voice tags on your mobile phone first. If the headset has connected to 2 phones, double press the MFB will start Voice-Dialing of phone 2.

* Last number re-dialing

Press and hold Volume Down button for 2 seconds, you will hear 2 short tones, the last number you dialed will be re-dial out. If the headset has connected to 2 phones, press and hold Volume Up button for 2 seconds will start last number re-dialing of phone 2.

NOTE

- If the headset has connected to 2 phones, when one phone has active a call, the headset will disconnect to other phone temperately, when you end the call the headset will re-connect it automatically, please make sure your phone's Bluetooth function would not be inactive during the calling.

8 Ending a call

When in the calling, press the MFB shortly will end the call, also you can end call on your mobile.

9 Reject an incoming call

When you receive an incoming call, press and hold MFB for 2 seconds will reject the incoming call.

10 Answering a call

When you receive an incoming call, press the MFB shortly can pick up the incoming call; also you can pick up the call on your mobile.

11 Transferring a call

When in the calling, press and hold Volume Up button for 2 seconds can transfer the call from headset to phone. Repeat the operation can transfer the call between the phone and headset each other.

12 Call-waiting (Three-Way Calling)

Before using Call-waiting function on your headset, please ensure that your phone supports the Hands-free profile, and you have been provide the service by the net provider.

- * If there is another incoming call while you are in the calling, press MFB shortly can accept the waiting call and end current calling.
- * If there is another incoming call while you are in the calling, press and hold MFB for 2 seconds can accept the waiting call and hold on current calling.
- * While you are in the calling and another call was holding on, press MFB shortly can end current call and resume the holding on calling.

- * While you are in the calling and another call was holding on, press and hold MFB for 2 seconds can shift the current calling to the holding on calling.
- * While you are in the calling and another call was holding on, press Volume Up button shortly can add the holding on call to the current conversation to make a multiparty call.
- * While you are in the calling and another call was holding on, or you are in a multiparty calling, double press MFB can end the calling or remove yourself from the multiparty calling.

13 Volume Control

While you are in the calling, you can adjust the volume by pressing volume up and volume down button or you can adjust the volume on your mobile.

14 Mute

While you are in the calling, Press and hold the Volume Down Button for 2 seconds, you will hear a melody from low to high, then the headset's MIC will be muted, and you will hear remindful melody every 10 seconds. Repeat the operation your will hear the melody from high to low, the mute function is cancelled.

15 Safety and general information

1. Please read this guidebook carefully and follow the instruction.
2. To avoid any damage or malfunction of the unit do not drop unit .
3. Keep the unit away from humidity, water and any other liquid. And if the unit is exposed by water, moisture and other liquid directly then don't operate it to avoid any electrical shock, explosion and damage of the unit.
4. Do not place or keep the unit near the heat sources such as direct sun light, radiators, stoves or other apparatus which produce heat. It may cause explosion, degrade of performance and reduce battery life.
5. Do not modify, repair & disassemble unit (Especially battery: It may cause an explosion)
6. Do not place the heavy objects on the unit.
7. Use only supplied and approved charger.
8. Replacement or service must be done by qualified service center or manufacture.
9. Unplug this unit when unused for long periods of time or during lightening storms.



CAUTIONS: ELECTRIC SHOCK HAZARD

The battery used in this device may present a risk of fire or chemical burn if mis-treated.

16 FCC & IC Statement

Operation is subject to the following two conditions:

- (1) This device may not cause harmful interference, and
- (2) This device must accept any interference received, including interference that may cause undesired operation.

Note: The manufacturer is not responsible for ANY interference, for example RADIO or TV interference, caused by unauthorized modifications to this equipment.

Such modifications could void the user's authority to operate the equipment.

17 EU

This product is Ce marked according to the provision of the R&TTE Directive (99/5/EC).

Declares that this product is in compliance with the essential requirements and other relevant provisions of Directive 1999/5/EC.

Please note that this product uses radio frequency bands not harmonized within EU.

Within the EU this product is intended to be used in Austria, Belgium, Denmark, Finland, France, Germany, Greece, Ireland, Italy, Luxembourg, The Netherlands, Portugal, Spain, Sweden, United Kingdom and within EFTA in Iceland, Norway and Switzerland.
Bluetooth is a trademark owned by the Bluetooth SIG, Inc.

18 Warranty

The condition of this warranty and our responsibilities under this warranty are as follows: Warranty is non-transferable and is limited to the original purchaser only.

- * You must be able to prove the date of original purchase of the unit with a dated receipt.
- * The warranty is not applicable if the product has been subject to physical abuse, improper installation, modification or repair by unauthorized third party.
- * The responsibility of supplier's products shall be limited to the repair or replacement of the product at its sole discretion.
- * Specifically exempt from any warranty are limited-life consumable components subject to normal wear and tear such as batteries, decorates and other accessories.
- * Supplier will not take any responsibility if the failure of the unit has resulted from accident, abuse, misuse, or any unauthorized repair, modification or disassemble.
- * Modification and repair of the unit should be done by authorized and qualified service center or returned to the manufacturer
- * This warranty gives you specific legal rights, and you may also have other rights which vary under local laws.

This device complies with part 15 of the FCC rules. Operation is subject to the following two conditions: (1) this device may not cause harmful interference, and (2) this device must accept any interference received, including interference that may cause undesired operation.

NOTE: The manufacturer is not responsible for any radio or TV interference caused by unauthorized modifications to this equipment. Such modifications could void the user's authority to operate the equipment.

NOTE: This equipment has been tested and found to comply with the limits for a Class B digital device, pursuant to part 15 of the FCC Rules. These limits are designed to provide reasonable protection against harmful interference in a residential installation. This equipment generates uses and can radiate radio frequency energy and, if not installed and used in accordance with the instructions, may cause harmful interference to radio communications. However, there is no guarantee that interference will not occur in a particular installation.

If this equipment does cause harmful interference to radio or television reception, which can be determined by turning the equipment off and on, the user is encouraged to try to correct the interference by one or more of the following measures:

- Reorient or relocate the receiving antenna.
- Increase the separation between the equipment and receiver.
- Connect the equipment into an outlet on a circuit different from that to which the receiver is connected.
- Consult the dealer or an experienced radio/TV technician for help.