

V3R Internal Photos

This document is provided to show internal photos of the V3R Telematics Device in accordance with FCC requirements per 2.1033(b)(7).

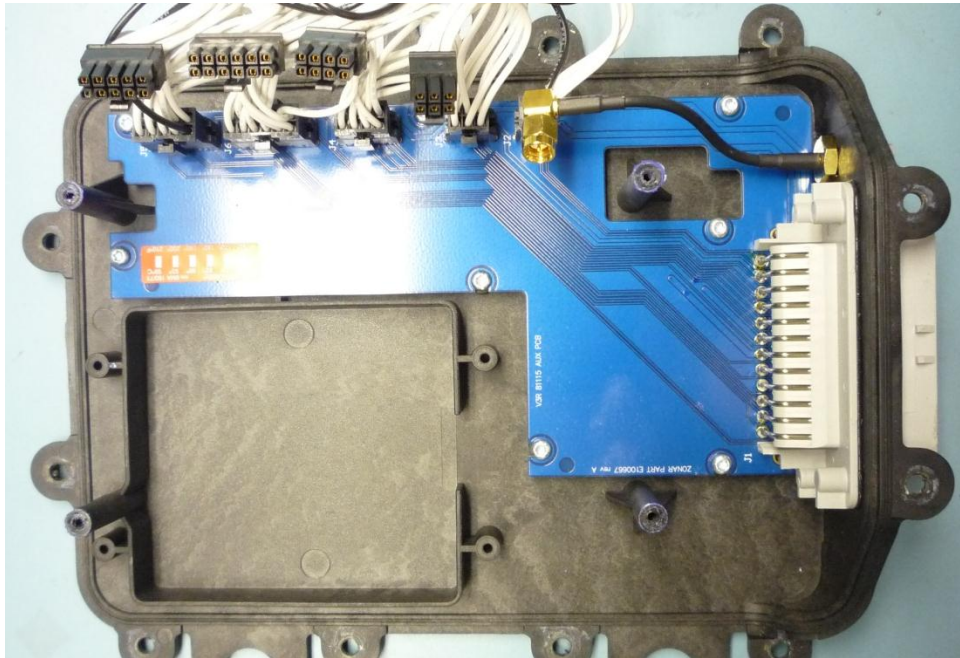


Figure 1 V3R Lower enclosure and pass-through PCB

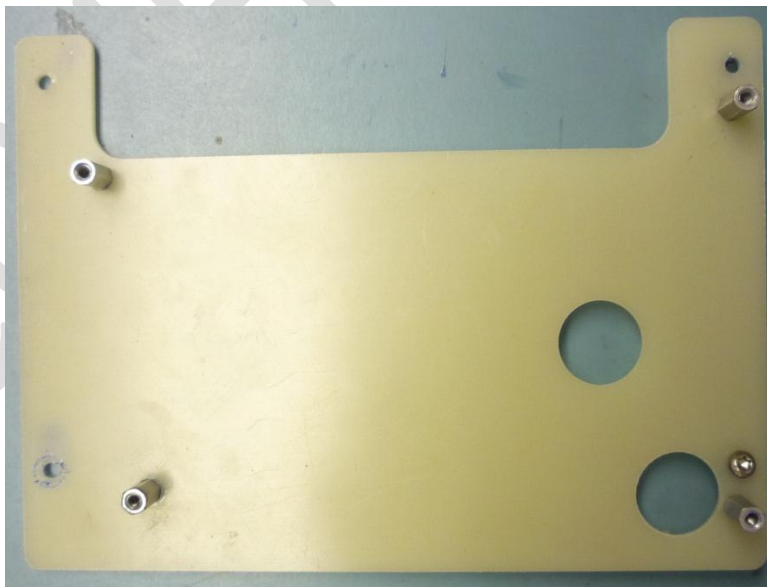


Figure 2 V3R Composite adapter plate

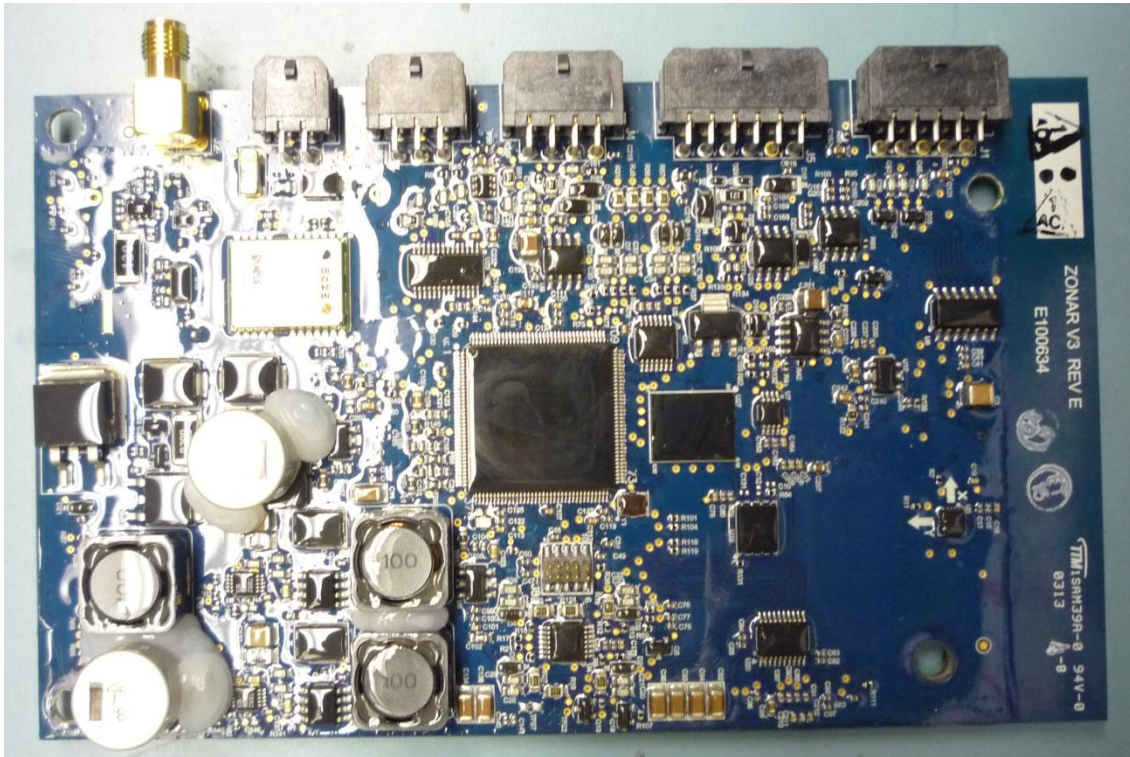


Figure 3 V3R PCB Component/Bottom Side

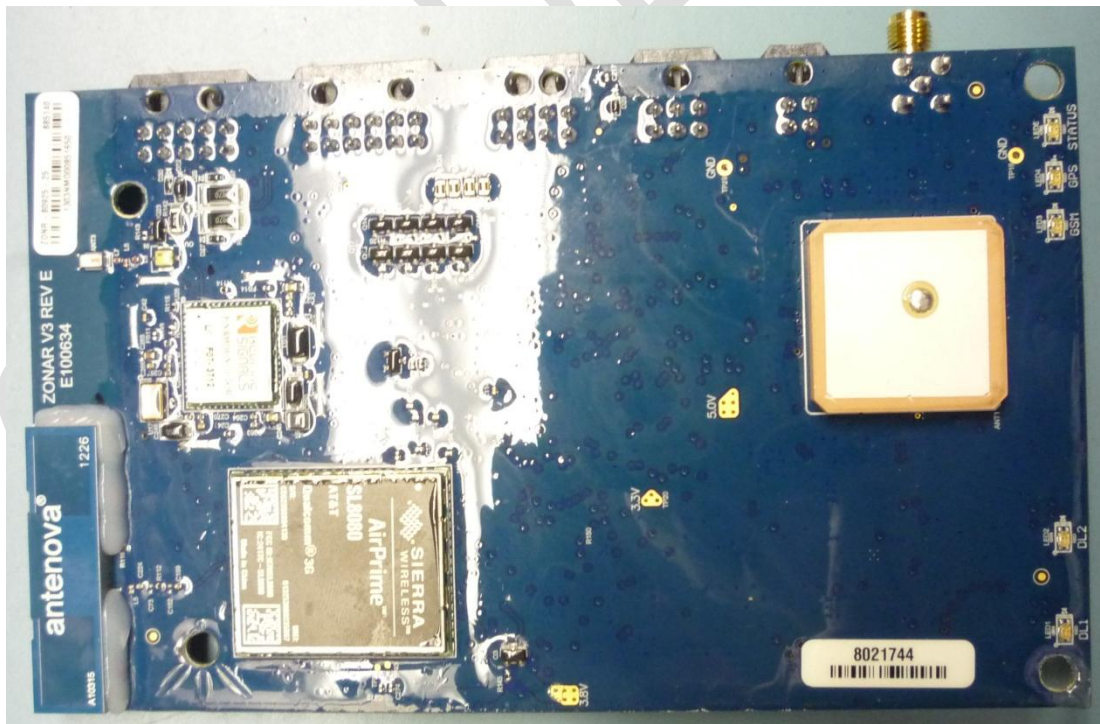


Figure 4 V3R PCB Antenna/Top Side

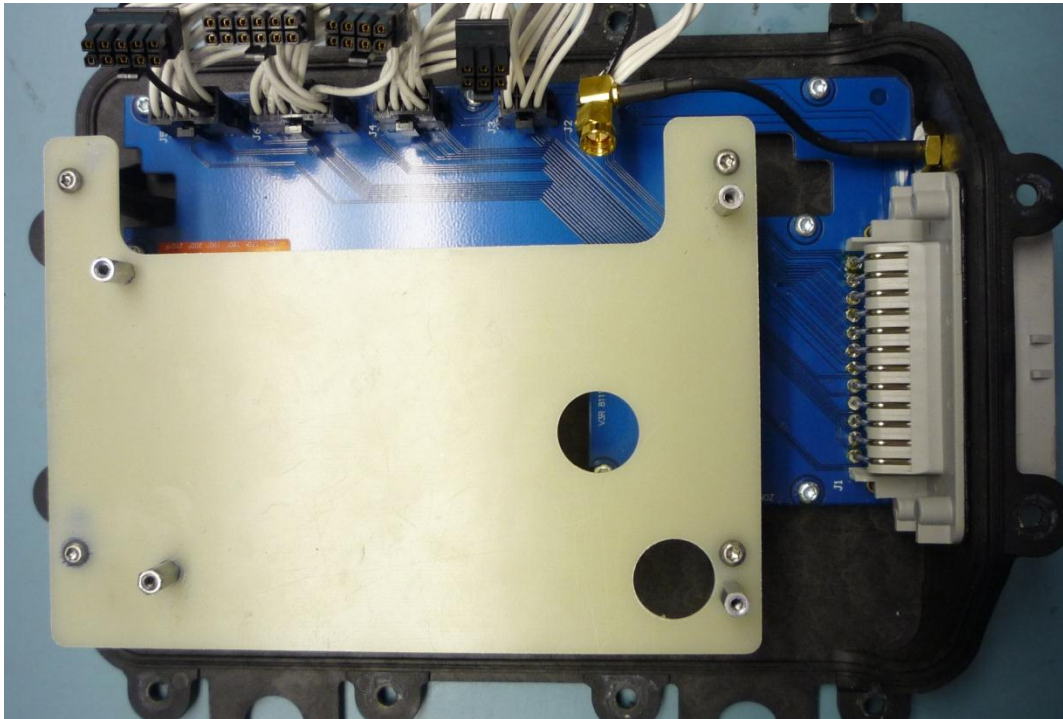


Figure 5 V3R Lower enclosure and pass-through PCB with adapter plate installed

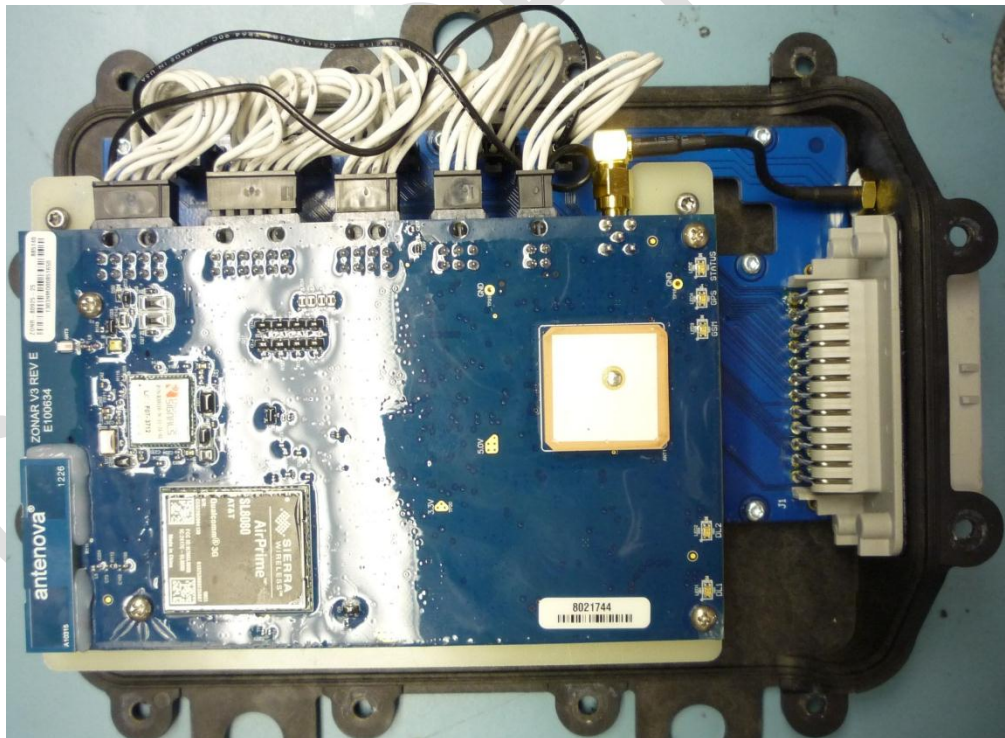


Figure 6 V3R Complete internal assembly (top cover removed)

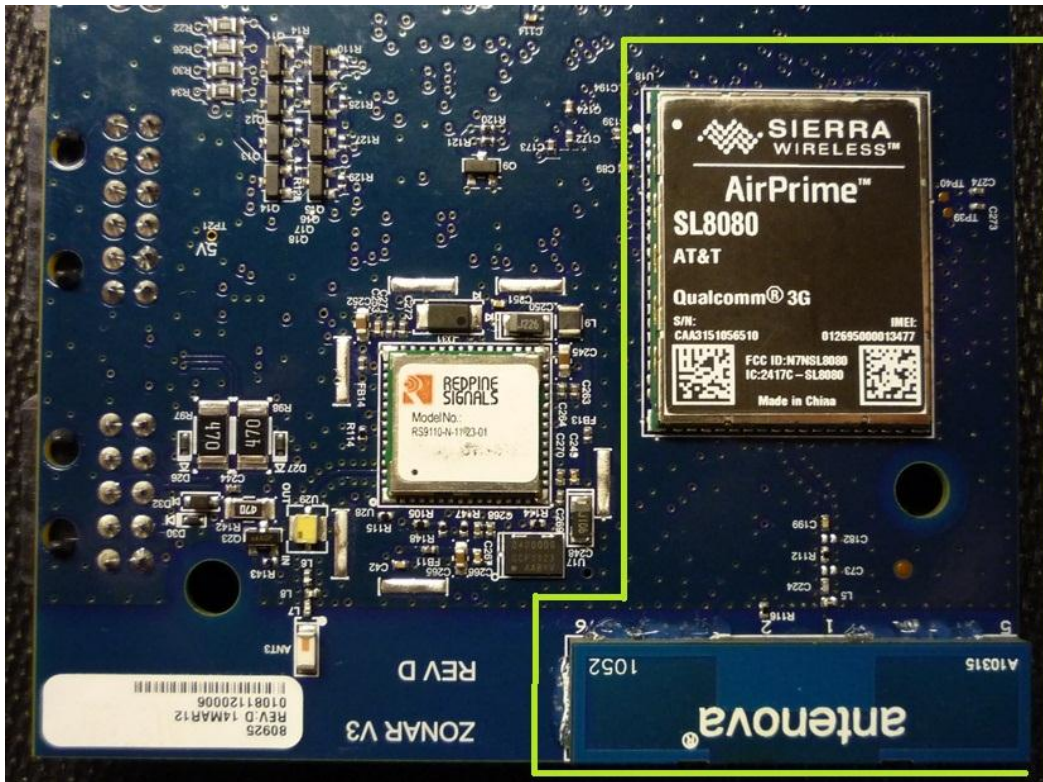


Figure 7 V3R GSM Radio Sub-Circuit

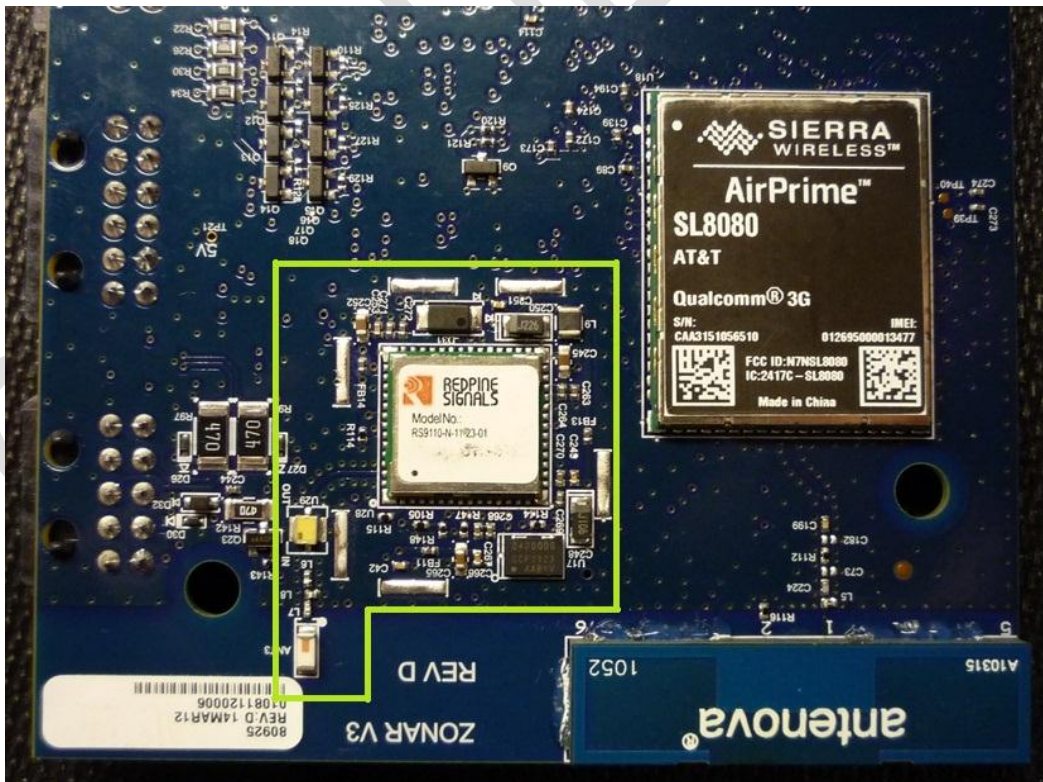


Figure 8 V3R WiFi radio Sub-Circuit