

### FCC ID Label & Location Document

The FCC ID label for the ZpassV2 is located on the back of the device enclosure. This single lable contains the FCC id, the IC id, the Zonar model of 'V3' as well as the specific part number, SCID and GPSid number of the particular device.



Figure 1 Label located on the enclosure back

CONFIDENTIAL

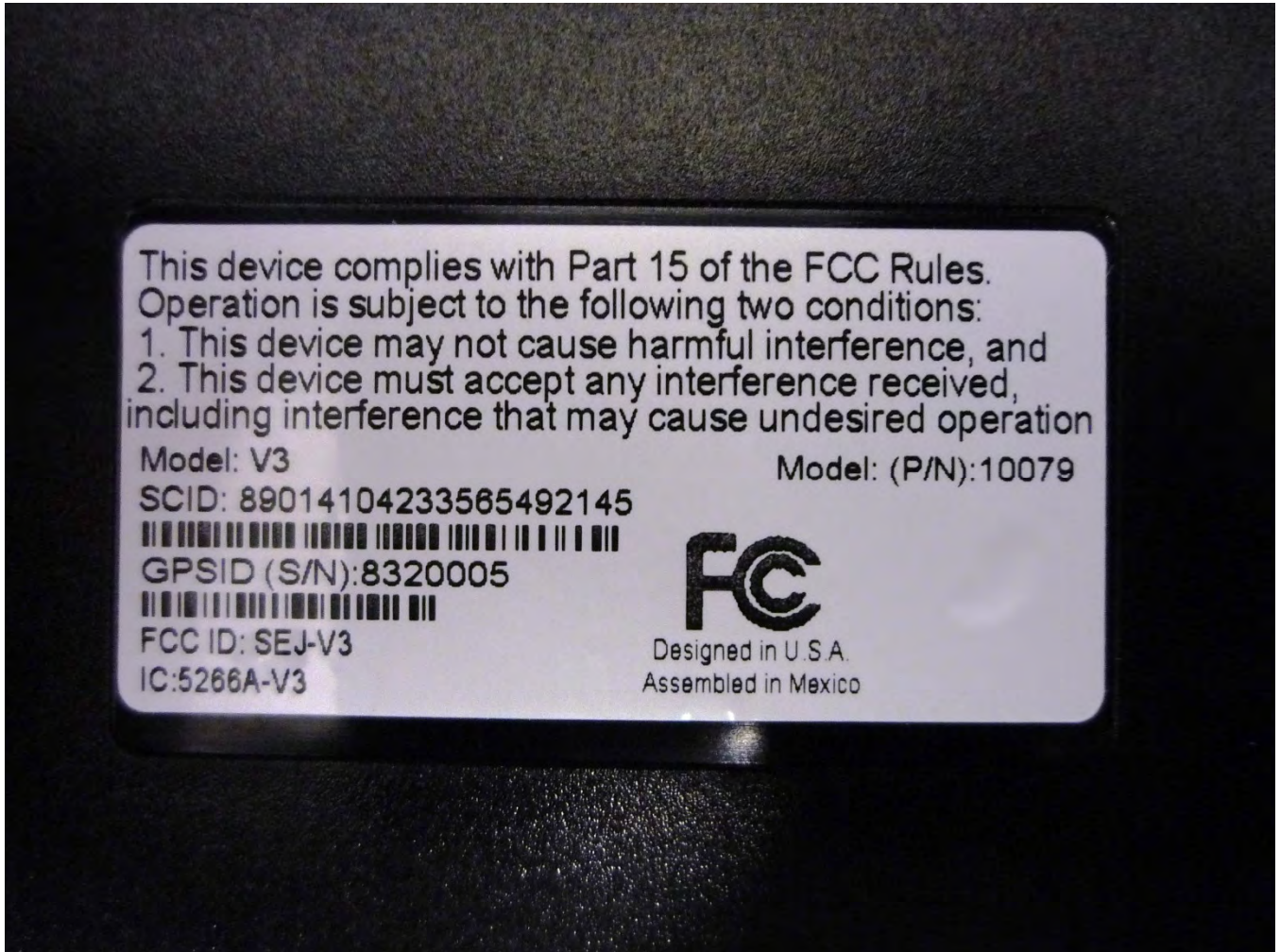


Figure 2 Label Close-up on Backside of Device

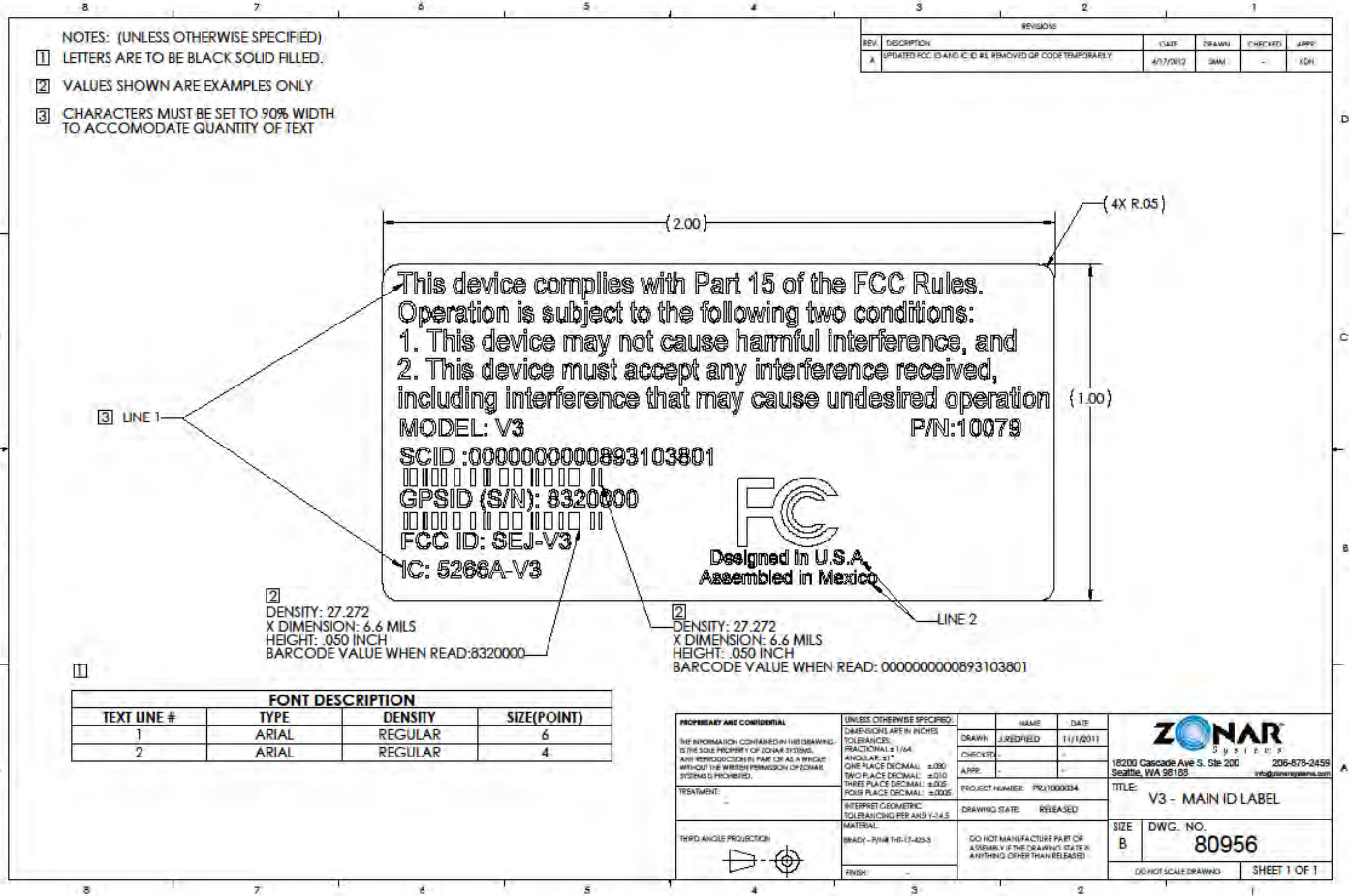


Figure 3 Label Contents Drawing