

Z-Con 80510 Truck Radio Antenna Information

This document provides antenna compliance information for the 80510.

- a) As per FCC requirement 15.203; the 80510 antenna is an integrated trace antenna etched into the PCB shown in Figure 1.
- b) The 80510 PCB trace antenna as a gain of 0dBi.
- c) The 80510 will be secured internally to an enclosure, making it inaccessible for modification or replacement without compromising the device.

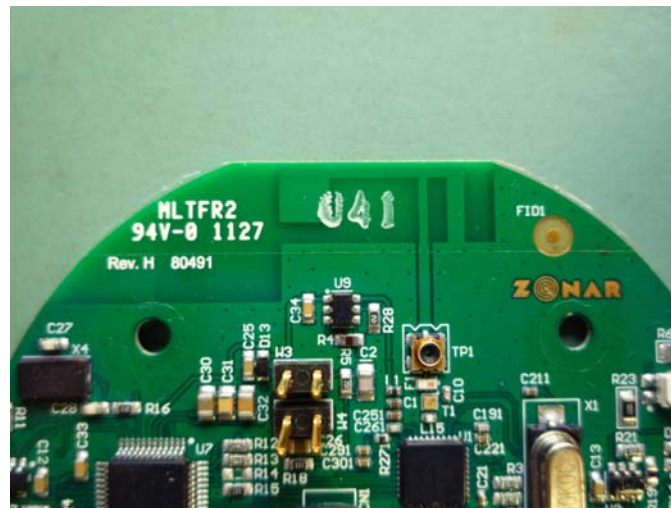


Figure 1 80510 uses an integrated trace antenna