



7
22
RFP34
VICS #2
radioed sample

ALSTRA IP RFP34
DeTeWe

CE

MAC: 08:00:41:00:11:90

L2300
LX7510-12A-A-1111-01



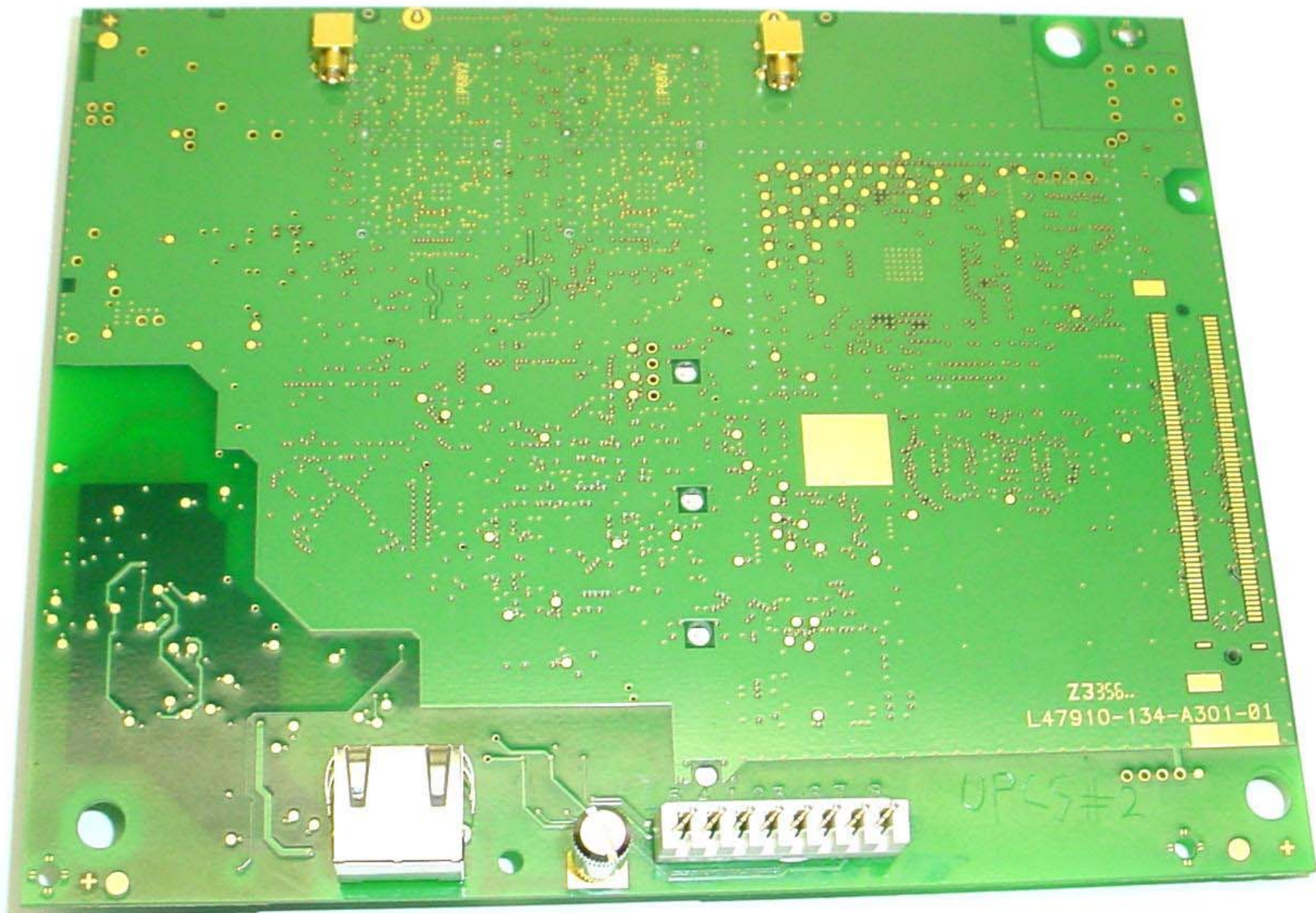
ASTRA IP RFP34
DeTeWe



CE

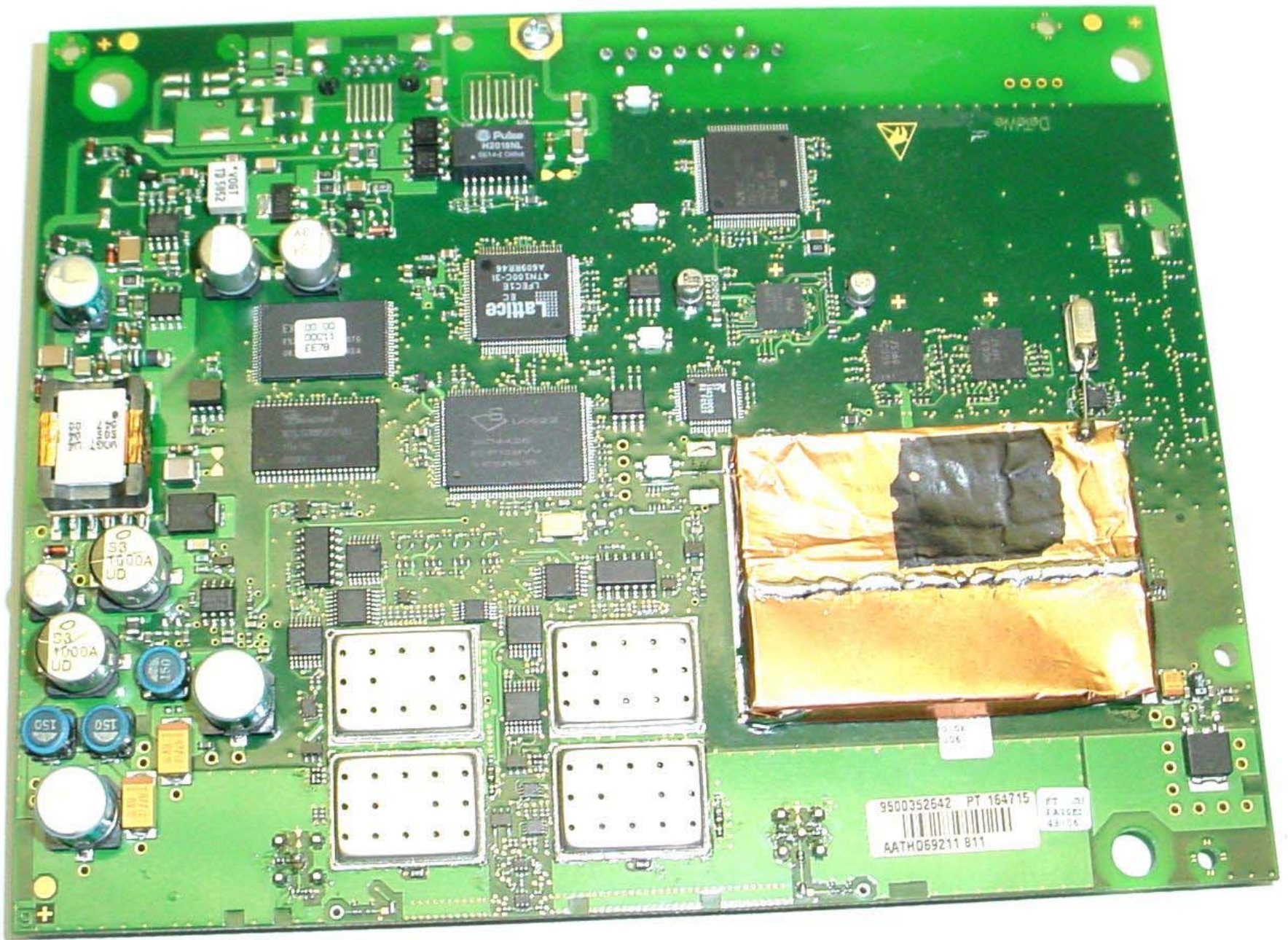


Z315
L47910-134-A301-81



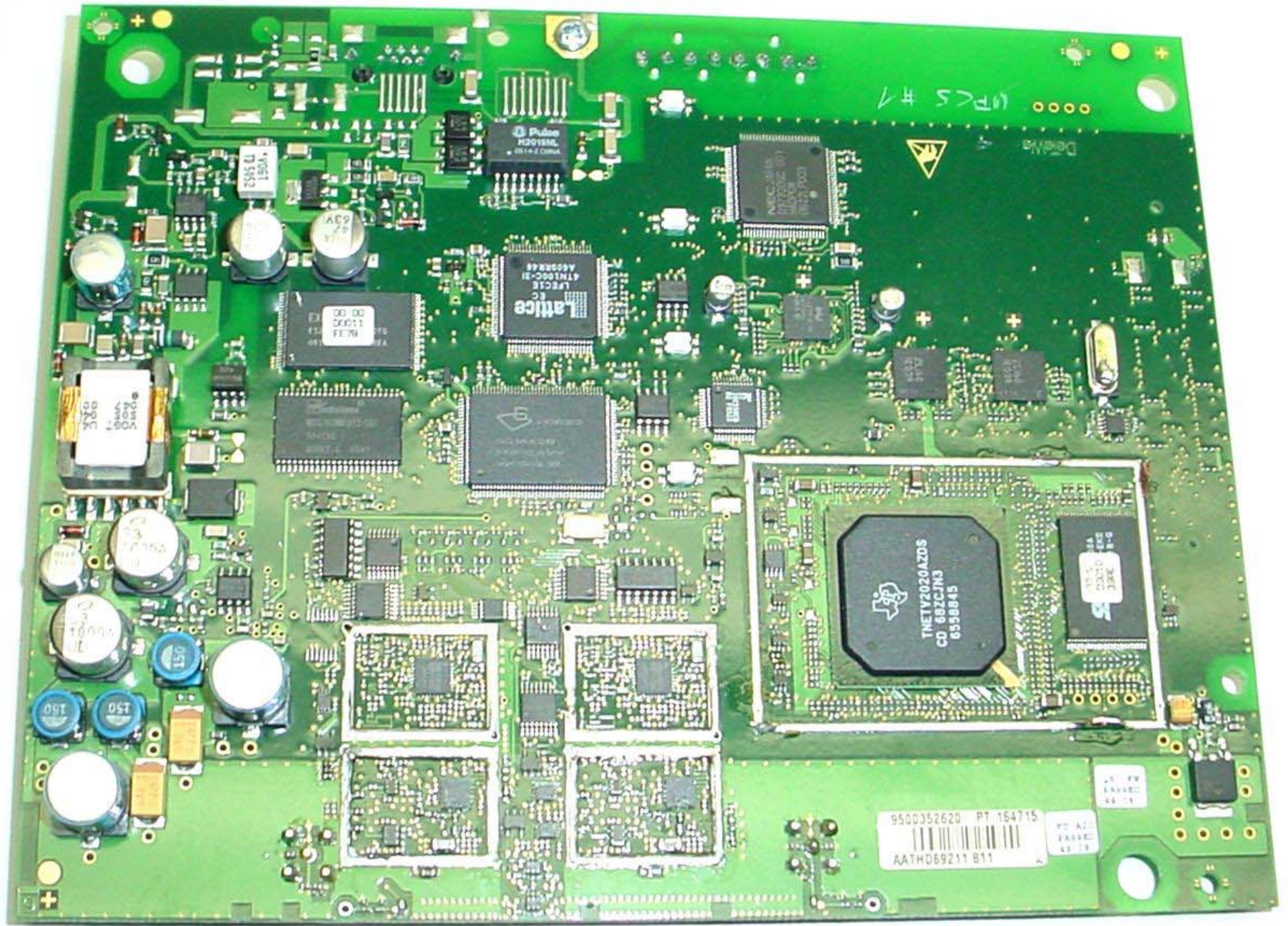
Z3356..
L47910-134-A301-01

UPCS#2



9500352642 PT 164715
AATH069211 B11

PT 01
FAIGED
48/06



IPC5 #1

DeMina

9500352620 PT 164715

AATH069211 B11

PT A1:
PART#: 44 14

PT PW
PART#: 44 14

TNETV2020AZDS
CD 682CJN3
6358845

38C

Lattice
L6C1E
41N100C-21
AS00045

30 00
30011
FE79

3000
3000
3000

150
150

150
150

150
150

2500 EL
150A

AC9
74

150