



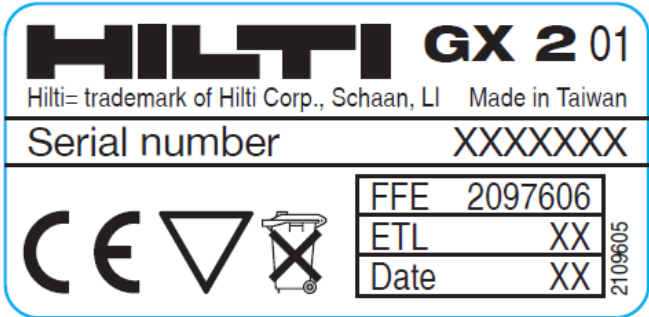
GX 2 tool family – Comparison of family members

The GX 2 tool family are gas-actuated fastening tools for different applications. The standard version (GX 2) is designed to fasten nails fed from a magazine mainly for Interior Finish (IF) applications. This tool is already accepted for US approval under the FCC identifier “SDL-GXR02”. The additional family members GX-IE and GX-IE XL will be introduced with slight modifications to fasten insulation boards by using insulation fasteners. These tools don’t use a magazine. Each fastener has to be loaded on the fastener guide separately.

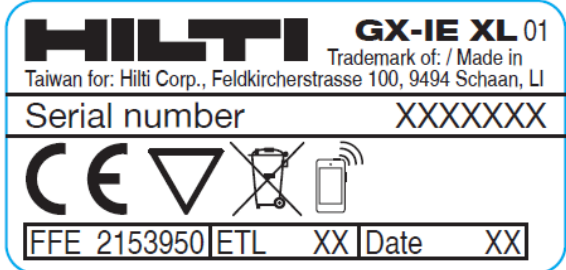
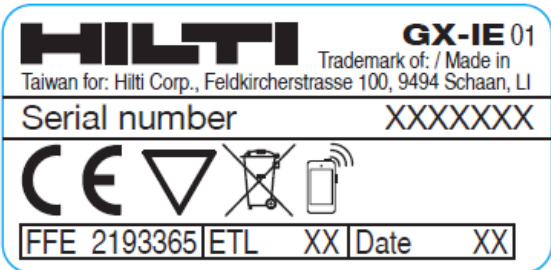
All tool versions share the same platform with minor design adaptations to serve the different application needs. The basic function of the tool including the electronics and radio communication features are all the same.

Only mechanical components are changed. The electronics parts are identical for all family members GX 2, GX-IE and GX-IE XL.

The following pages document the differences and commonalities with photos directly comparing the tools GX 2 and GX-IE / GX-IE XL.



Type plate GX 2



Type plate GX-IE, GX-IE XL



The final printing on the housing of the family members GX-IE and GX-IE XL will be “HILTI GX-IE” as shown with the following photo.



The next pages showing the comparison between the tools with and without magazine show a housing of the tools without magazine with an intermediate printing on the housing. The serial tools will have a printing “GX-IE” instead of “GX 2-IE”.

The tools GX-IE and GX-IE XL, both without magazine, differ by different lengths of the fastener guide: GX-IE – 150 mm, GX-IE XL – 200 mm.



Outer view, complete tool

GX 2



GX-IE,
GX-IE XL



Outer view, disassembly

GX 2



GX-IE,
GX-IE XL



Inner view, components overview

GX 2



GX-IE,
GX-IE XL



Inner view, electronics

GX 2



GX-IE,
GX-IE XL

