



Deutsche
Akkreditierungsstelle
D-PL-12053-01-00

**Annex acc. to FCC Title 47 CFR Part 15
relating to
Hilti Corporation
GX 3, GX3-ME**

Annex no. 2

Internal Photographs

**Title 47 - Telecommunication
Part 15 - Radio Frequency Devices
Subpart C – Intentional Radiators
Measurement Procedure: ANSI C63.4-2009**

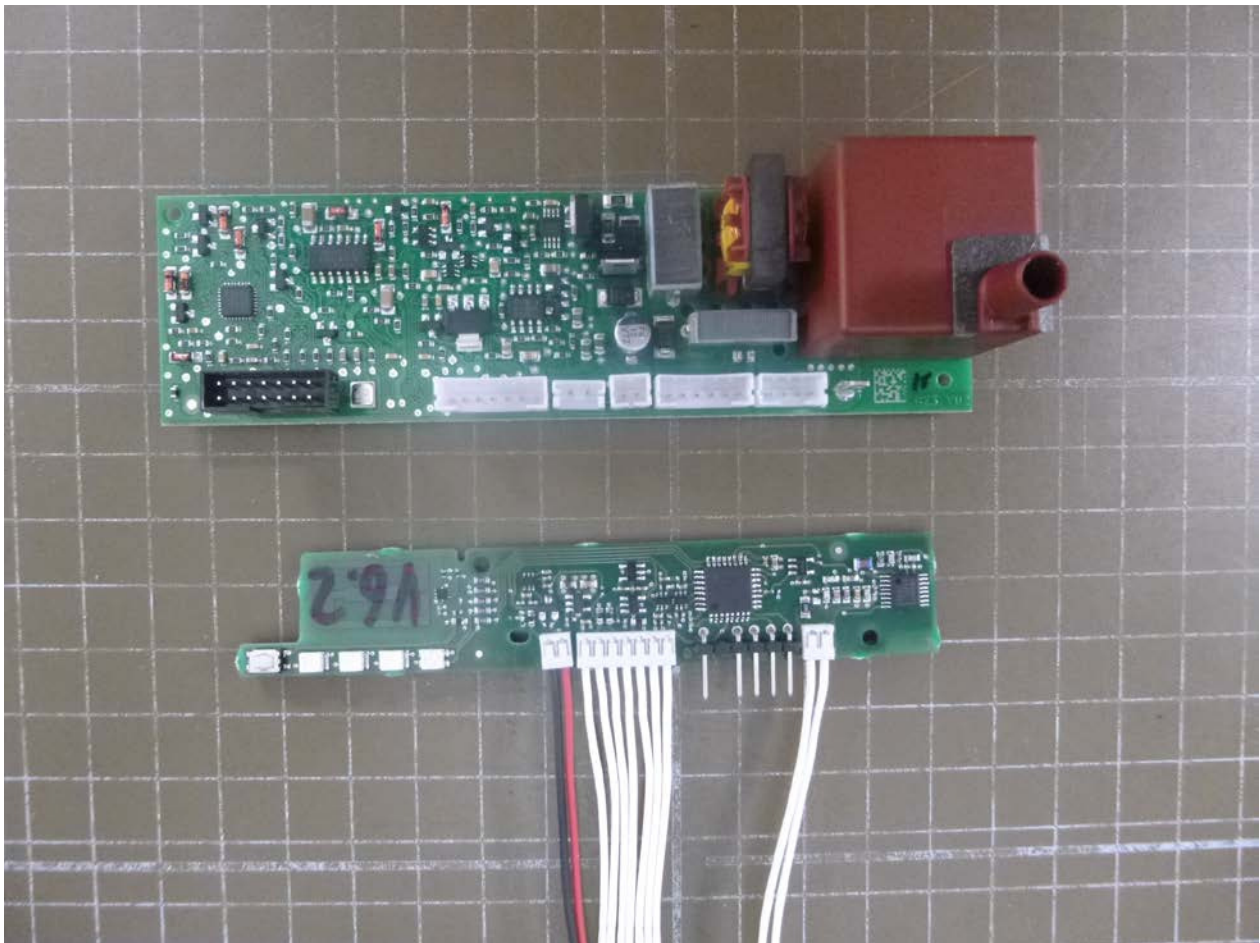
Photographs of the test equipment (EUT) - Internal construction

The equipment shall be opened only after type testing is completed and photographs of the internal construction shall be made.



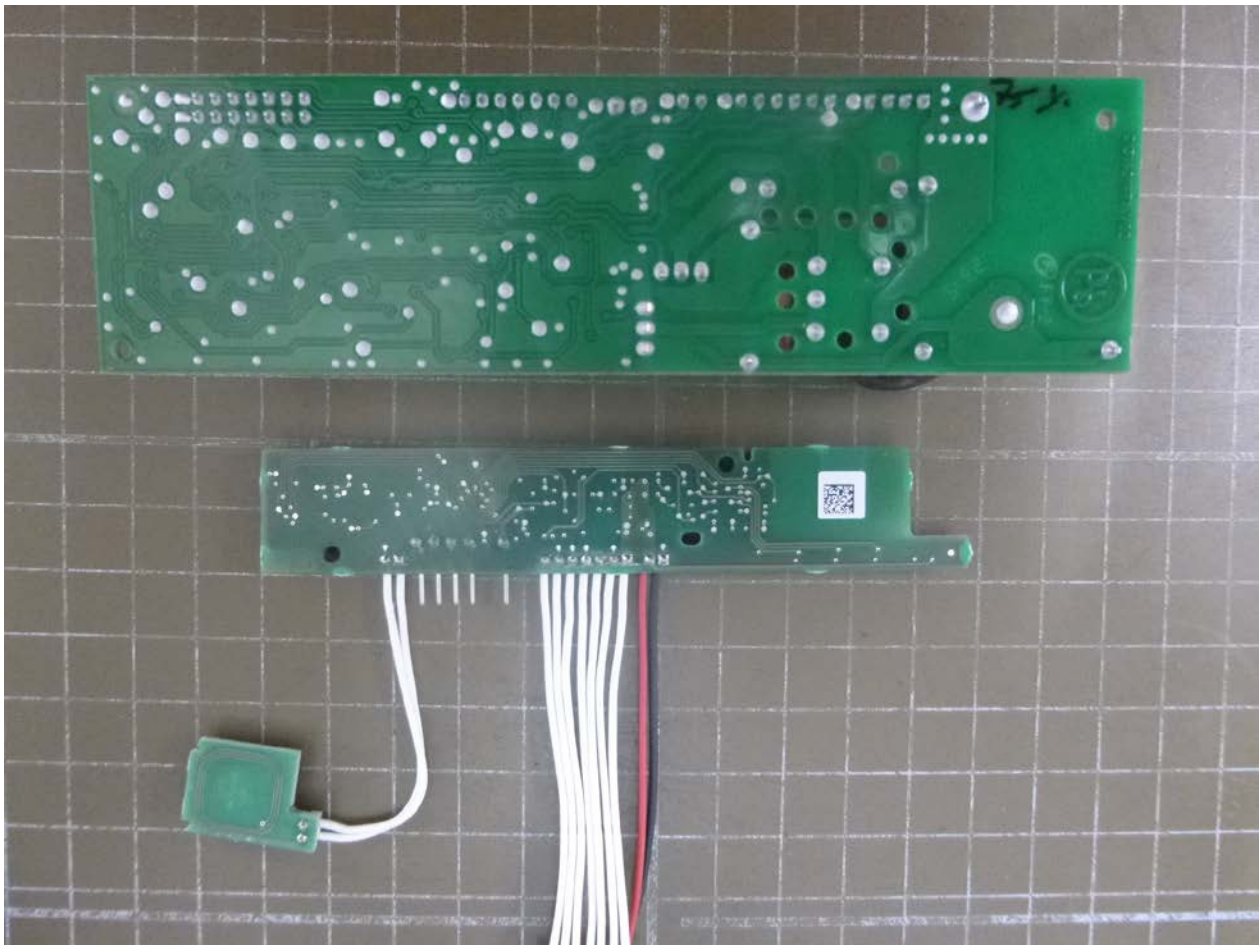
Photographs of the test equipment (EUT) - Internal construction Upper side (PCB's)

The equipment shall be opened only after type testing is completed and photographs of the internal construction shall be made.



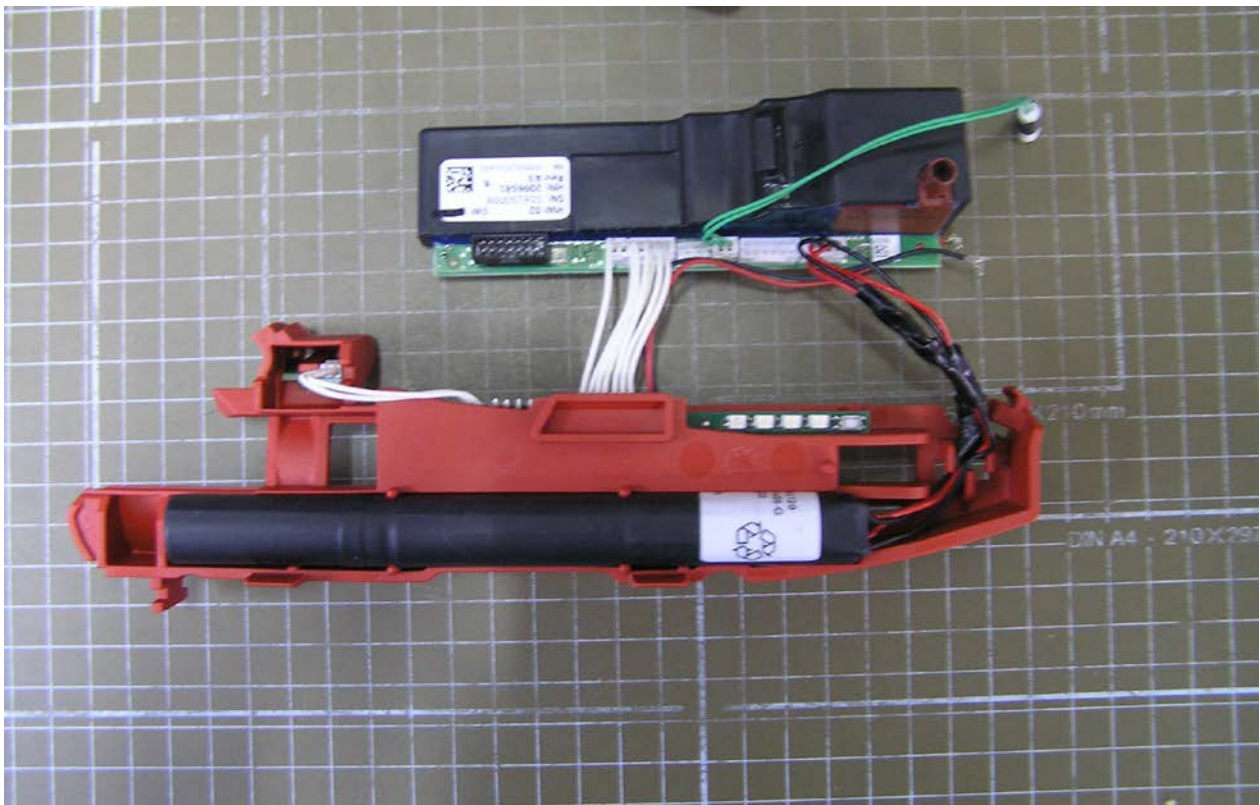
Photographs of the test equipment (EUT) - Internal construction Lower side (PCB's)

The equipment shall be opened only after type testing is completed and photographs of the internal construction shall be made.



Photographs of the test equipment (EUT) - PCB Upper side of unit

The equipment shall be opened only after type testing is completed and photographs of the internal construction shall be made.



Photographs of the test equipment (EUT) - PCB Lower side of unit

The equipment shall be opened only after type testing is completed and photographs of the internal construction shall be made.

