

# User's Manual

## 1. General

This document describes the installation procedure and usage of the RightTag series 3000 RFID reader.



### **NOTE!**

This device complies with Part 15 of the FCC Rules. Operation is subject to the following two conditions: (1) this device may not cause harmful interference, and (2) this device must accept any interference received, including interference that may cause undesired operation.

This equipment has been tested and found to comply with the limits for a Class B digital device, pursuant to Part 15 of the FCC Rules. These limits are designed to provide reasonable protection against harmful interference in a residential installation. This equipment generates, uses and can radiate radio frequency energy and, if not installed and used in accordance with the instructions, may cause harmful interference to radio communications. However, there is no guarantee that interference will not occur in a particular installation. If this equipment does cause harmful interference to radio or television reception, which can be determined by turning the equipment off and on, the user is encouraged to try to correct the interference by one or more of the following measures:

- Reorient or relocate the receiving antenna.
- Increase the separation between the equipment and receiver.
- Connect the equipment into an outlet on a circuit different from that to which the receiver is connected.
- Consult the dealer or an experienced radio/TV technician for help.

## 2. Installation

Unpack the device.

In case you are using the COM version of reader, plug it into a free COM port. The reader is ready for operation.

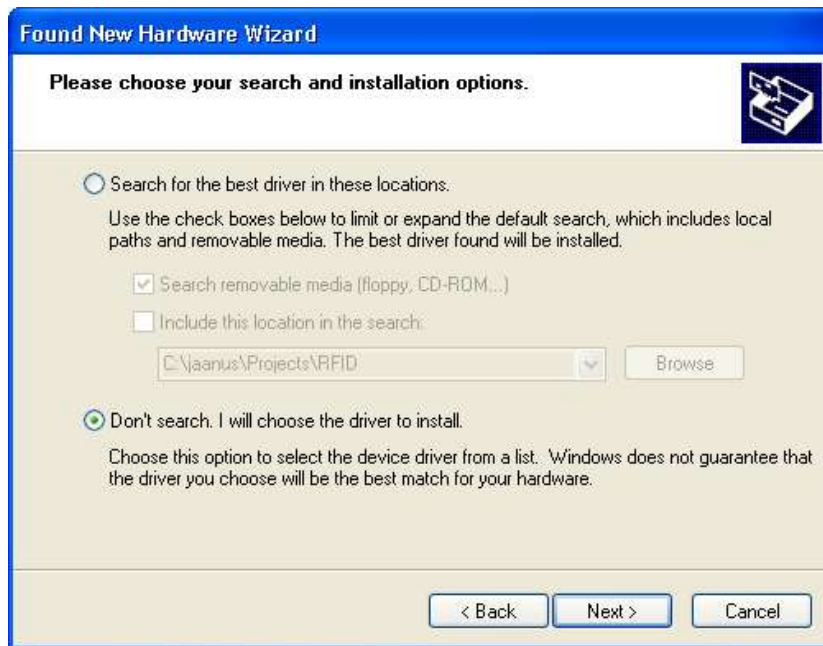
**Note:** it is essential that your COM port has power supply voltage +5V connected to pin 1 of the connector. The reader gets the power supply via COM cable. In case your COM port does not provide the voltage, it is possible to use a standard adapter that takes the power supply from PS/2 port of your PC.

In case you are using the USB version of reader, plug it into a free USB port. The “Found New Hardware” dialog will appear. Below is described install procedure for Windows XP.

**Note:** Installing the reader under Windows 2000 is similar to Windows XP. You have to point to directory with driver file (RFIDReader.ini).



Choose “Install from a list or specific location (Advanced)” and click “Next”.



Choose “Don’t search. I will choose the driver to install” and click “Next”.



Now click “Have Disk...” and select the folder that contains the driver file (RFIDReader.ini). Then click “Next”.

Windows XP will then show the next message:



Click “Continue Anyway”. This will install the driver.



Now click “Finish”. Your computer should now have one more COM port – virtual COM port “RightTag Series 3000 RFID Reader (13.56 MHz)”. Communication between PC and reader can be done now exactly as it would be done through real COM port using the COM reader.

### 3. Quick start guide

If your reader came with special software for PC, start this. If not, you can use any COM port terminal program to read the information from tag. For example:

Start -> All Programs -> Accessories -> Communication -> HyperTerminal.

Select the COM port your reader is connected to. If using USB reader, the serial port parameters do not matter. If using COM reader, select the baud rate (usually new readers come with 9600bps), 8 data bits, no parity, 1 stop bit, no handshake.

Now just put the tag near the reader and press the button on the reader. You should see the tag ID and data written on the tag in the HyperTerminal's window. Also the reader should make an "OK" beep and blink the green light. If you press the button without putting the tag near the reader's antenna, you should see red blink and hear "fail" beep. If your reader continuously blinks orange light, it is in continuous read mode – there is no need to press the button, just move the tag near the reader and it will be read.

#### **4. Troubleshooting**

1. Problem: Reader seems to do nothing (no sound, no light).

Check if the USB or COM cable is connected properly. In case you have the COM version, ensure that there is power supply +5V at pin 1 of COM connector.

2. Problem: Reader always makes the "fail" beep and blinks the red light.

Your tag may be of wrong type or damaged. Try to check if the reader was meant for those tags. Also try some more tags.

3. Problem: Reader makes "OK" beep and blinks green light when reading a tag, but nothing appears in the HyperTerminal window.

Check, if your reader is connected into the same COM port that you selected when starting HyperTerminal.

4. Problem: Only garbage appears into the HyperTerminal window.

Probably the COM port baud rate was wrong. The possible values the reader can be configured: 9600, 19200, 38400, 57600, 115200. Try to change the baud rate.