



Excellence in Compliance Testing

Certification Exhibit

FCC ID: SDBIDTB003

IC: 2220A-IDTB003

FCC Rule Part: CFR 47 Part 24 Subpart D, Part 101 Subpart C
IC Radio Standards Specification: RSS 119, RSS 134

ACS Project: 11-2107

Manufacturer: Sensus Metering Systems, Inc.
Model: IDTB003

Label Information

SAMPLE LOCATION of iCONAS CR LABEL

FCC ID: SDB IDTB003 IC: 2220A-IDTB003
This device complies with Part 15 of the FCC rules.
Operation is subject to the following two conditions.
(1) This device may not cause harmful interference, and
(2) This device must accept any interference received,
including interference that may cause undesired operation.
P/N IDTB003 rev Sensus, Raleigh, NC 27615

FIGURE 1: Sample Label.

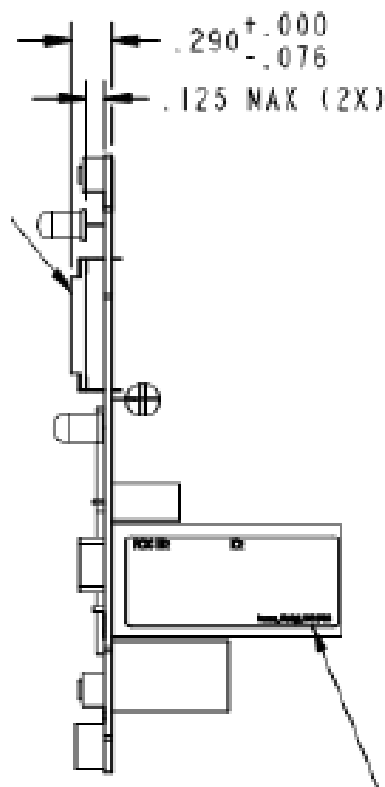


FIGURE 2: Label Location on Capacitor.

Contains FCC ID: SDBIDTB003 IC: 2220A-IDTB003 Model: IDTB003

This device complies with Part 15 of the FCC rules. Operation is subject to the following two conditions.

(1) This device may not cause harmful interference, and (2) This device must accept any interference received, including interference that may cause undesired operation.



12345678901234

SB



12345678901234

DB



12345678901234

PS

P/N: 70014-086-00001

rev

Model: 530X

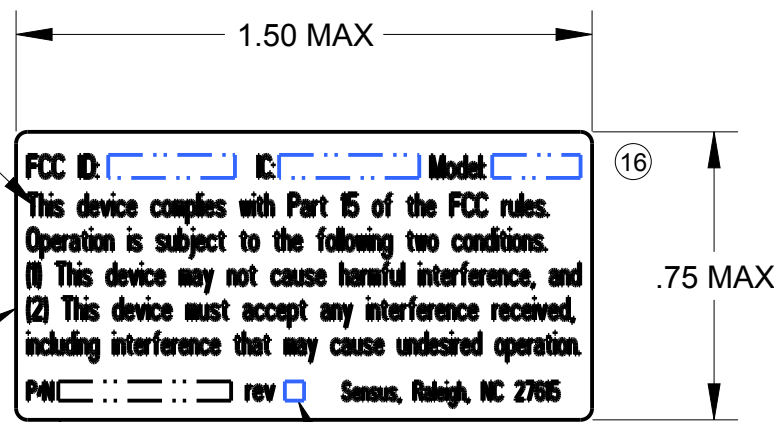
Sensus, Raleigh, NC 27615

FIGURE 3: Sample Host Label

REVISIONS	15
SEE SHEET 1 FOR REVISIONS	

ITEM NO.	NAME AND MATERIAL	PART NO.
1	FlexNet Label, PC BOARD FCC I.D., APX	70005-086-23001
2	FlexNet Label, PC BOARD FCC I.D., ICON-AS	70022-086-00001
3	FlexNet Label, ZIGBEE IN-LINE PCBA, RD	70026-086-00003
4	FlexNet Label, ZIGBEE DAUGHTER PCBA, NON-RD	70026-086-00004
5	FlexNet Label, PC BOARD FCC I.D., ICON-AS, RE	70022-086-00003

SOLID BLACK TEXT



(15)

DRAWING/LABEL REVISION CROSS REFERENCE	
DRAWING REV	LABEL REV
14	12
15	15
16	16
17	17

(16)
(17)

SEE TABLE FOR REVISION NUMBER

OUTLINE IDENTIFIES LABEL EDGE. DO NOT PRINT

SEE SHEET 1 FOR LABEL MATERIAL

(16)

PART NUMBER	FCC ID	IC ID	Model
70005-086-23001	SDB APXCVR01	2220A-APXCVR01	
(15) 70022-086-00001	SDBIDTB002	2220A-IDTB002	IDTB002
70026-086-00003	SDBZIGMOD10	2220A-ZIGMOD10	ZIGMOD10
70026-086-00004	SDBZIGMOD20	2220A-ZIGMOD20	ZIGMOD20
(17) 70022-086-00003	SDBIDTB003	2220A-IDTB003	IDTB003

This reproduction is a confidential disclosure loaned subject to the conditions that it or any information contained therein will not be used in any way detrimental to our interests and that all copies will be returned immediately on demand.



805 Liberty Blvd. DuBois, PA 15801

DECIMAL TOL.
2 PLACE DEC. ±.01
3 PLACE DEC. ±.003

MACHINE SURFACE UNLESS NOTED.

THICKNESS OF CASTINGS OR FORGINGS IS ±.06 FOR EACH ONE INCH OF SECTION.

MOULDING DRAFTS .2°

CHAMFER ALL THREADS ONE THREAD DEEP

REMOVE BURRS AND BREAK SHARP CORNERS.

REF. ANSI Y14.5M 1994. CN-12873

TITLE Icon Meter			
Label, FlexNet, FCC, 2-WAY			
BY	CHK'D.	APPD.	DWG. NO.
			D-43608-C
DATE		SCALE	
06/28/05		2:1	