
WUB1900RT
USB Wireless Adapter
Quick Installation Guide

V1.0
2011-07-21

Certification

FCC CE

FCC Statement

This equipment has been tested and found to comply with the limits for a Class B digital device, pursuant to part 15 of the FCC rules. These limits are designed to provide reasonable protection against harmful interference in a residential installation. This equipment generates, uses and can radiate radio frequency energy and, if not installed and used in accordance with the instructions, may cause harmful interference to radio communications. However, there is no guarantee that interference will not occur in a particular installation. If this equipment does cause harmful interference to radio or television reception, which can be determined by turning the equipment off and on, the user is encouraged to try to correct the interference by one or more of the following measures:

- Reorient or relocate the receiving antenna.
- Increase the separation between the equipment and receiver.
- Connect the equipment into an outlet on a circuit different from that to which the receiver is connected.
- Consult the dealer or an experienced radio/TV technician for help.

To assure continued compliance, any changes or modifications not expressly approved by the party responsible for compliance could void the user's authority to operate this equipment. (Example- use only shielded interface cables when connecting to computer or peripheral devices)

FCC Radiation Exposure Statement

This equipment complies with FCC RF radiation exposure limits set forth for an uncontrolled environment. This transmitter must not be co-located or operating in conjunction with any other antenna or transmitter.

This equipment complies with Part 15 of the FCC Rules. Operation is subject to the following two conditions:

- (1) This device may not cause harmful interference, and
- (2) This device must accept any interference received, including interference that may cause undesired operation.

Caution!

The manufacturer is not responsible for any radio or TV interference caused by unauthorized modifications to this equipment. Such modifications could void the user authority to operate the equipment

1. Package Contents

The following items should be found in your package:

- Wireless-N USB Adapter
- Quick Installation Guide
- CD-ROM

Please make sure that the package contains the above items, if any of the listed items is damaged or missing, please contact with your distributor.

2. Product Overview

The USB Wireless Adapter improves wireless transmission over long distance and fully supports the 11N technology which enables you to connect to wireless networks at farther distances than before. It provides up to 150Mbps data transmission rate in 2.4GHz frequency, complies with IEEE 802.11n, IEEE 802.11g and IEEE802.11b and backwards compatible with all IEEE 802.11n/g/b devices. When the adapter is connecting to the standard 11n, 11g or 11b APs or Routers, it can perform much better than standard clients. It also supports wireless LAN up to 128-bit WEP, WPA/WPA2 encryption security that protects your wireless network from eavesdropping. This Wireless-N USB Adapter provides enhanced multimedia support. It is a cost-effective and best solution for you to build your wireless network.

3. System Requirement

You must have the following at least

- A laptop computer/desktop PC with an available 32-bit USB slot
- At least a 300MHz processor and 32MB of memory
- Windows 98SE, ME, 2000, XP, Vista/7
- A CD-ROM Drive
- USB controller properly installed and working in the computer
- A 802.11n 、802.11g or 802.11b Access Point (for infrastructure Mode) or another 802.11n、802.11g or 802.11b wireless adapter (for Ad-Hoc; Peer-to-Peer networking mode).

4. Driver and Utility Installation

Before you proceed with the installation, please notice following descriptions.

- Please do not install the adapter into your computer before installing the driver from the CD.
- We use driver installation in Windows XP for example. Procedures are similar for Windows 98SE/Me/2000/2003/vista/7.
- If you have installed the Turbo Wireless LAN USB Adapter driver & utility before, please uninstall the old version first.

Next is driver and utility installation:

- Insert the Driver and Utility CD-ROM into the CD-ROM driver.
- The Wizard should run automatically, and the driver installation window should appear. If not, click the Start button and choose Run and enter D:\autorun.exe (if 'D' is the letter of your CD-ROM drive)



Figure 1

- Select click "Next",



Figure 2

- Click install, then it will finish the installation automatically. Now you can insert you USB card into computer, it will be installed automatically

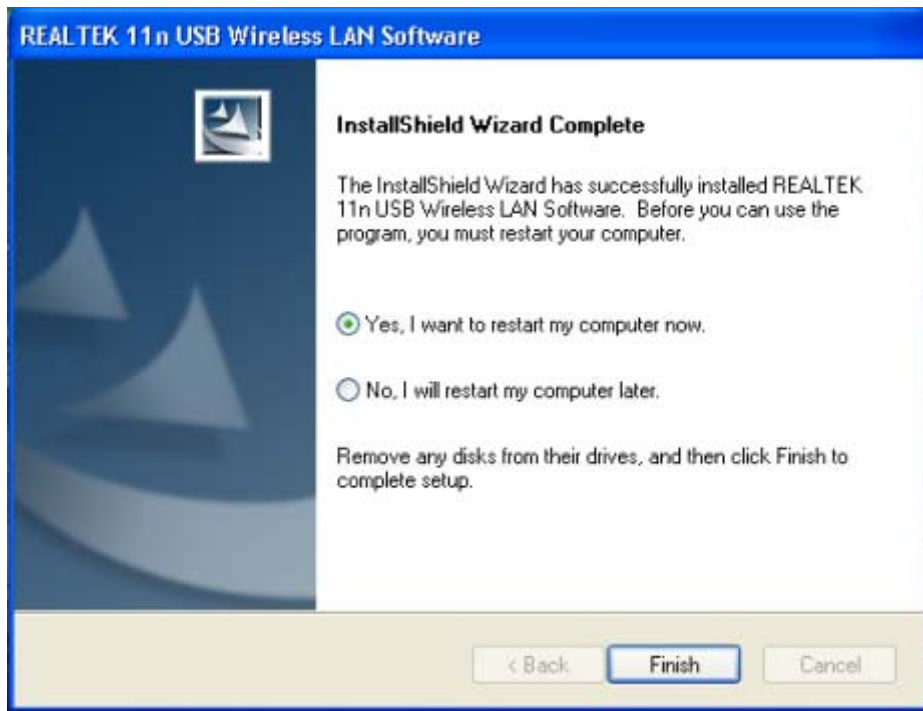


Figure 3

5. Connect to Wireless Network

The Utility appears as an icon on the system tray of Windows while the adapter is running. You can open the utility by double-click on the icon,

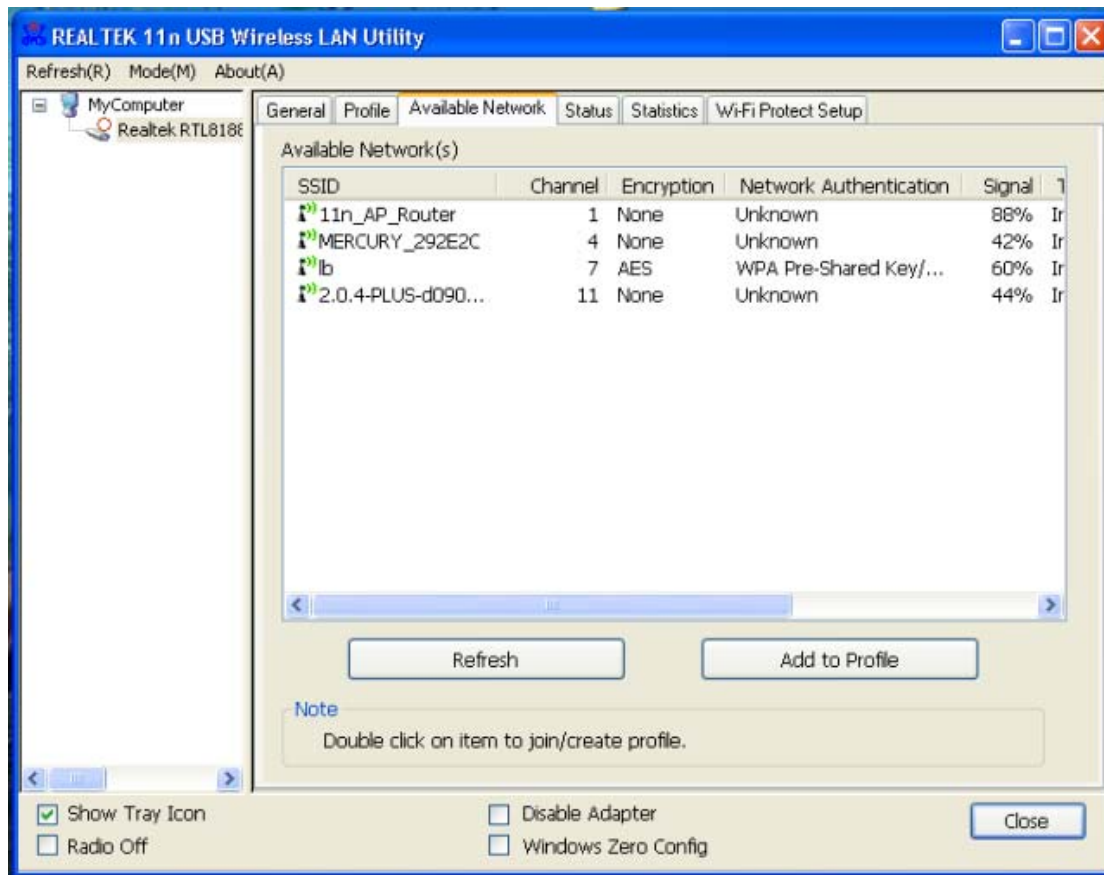


Figure 4

You can use the following methods to connect to a wireless network.

Method1:

- Select Network tab and click Rescan button to refresh current available wireless network



Figure

Figure 5

- Highlight the wireless network you want to connect, click connect. If it is encrypted, enter authentication key and then click OK. The connection is successful

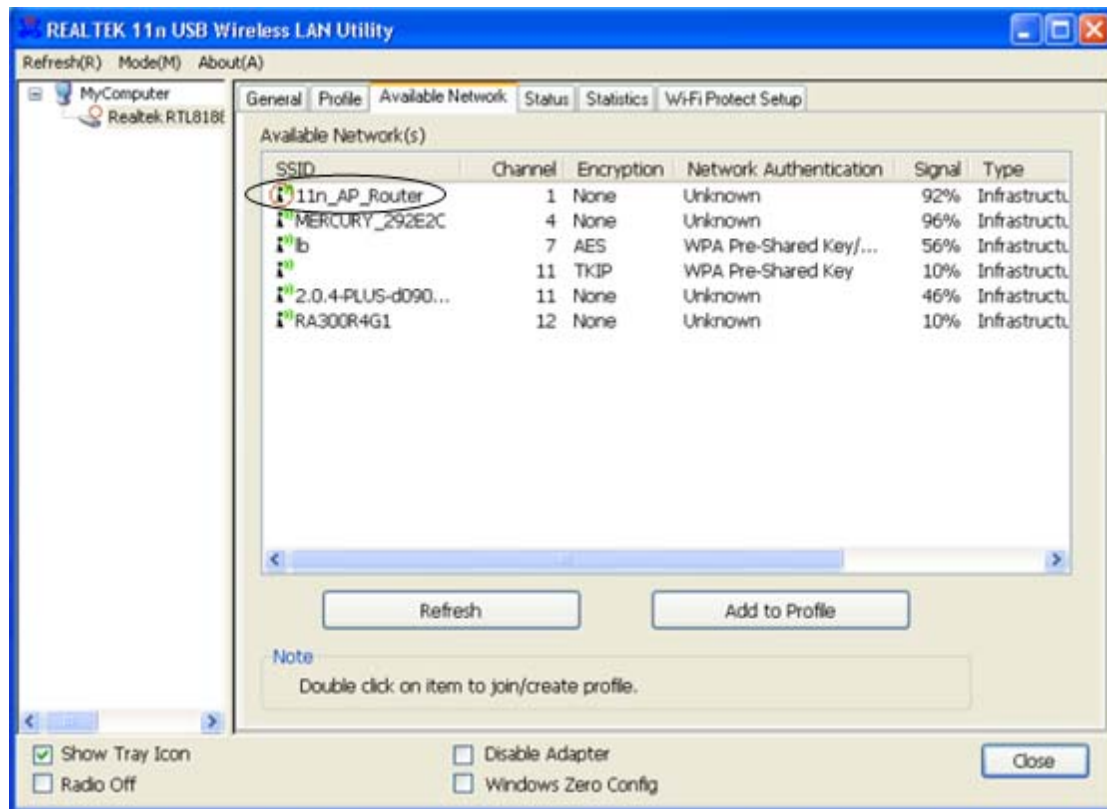


Figure 6

Method2:

Convenient way to connect to a safety wireless network

Note: you can use method2 only if you have a wireless router that has WPS hardware button

- Push the WPS hardware button of the wireless Router until the WPS LED is flashing
- Push the WPS button in this wireless network card for a few seconds
- The safe connection will be established automatically, please wait

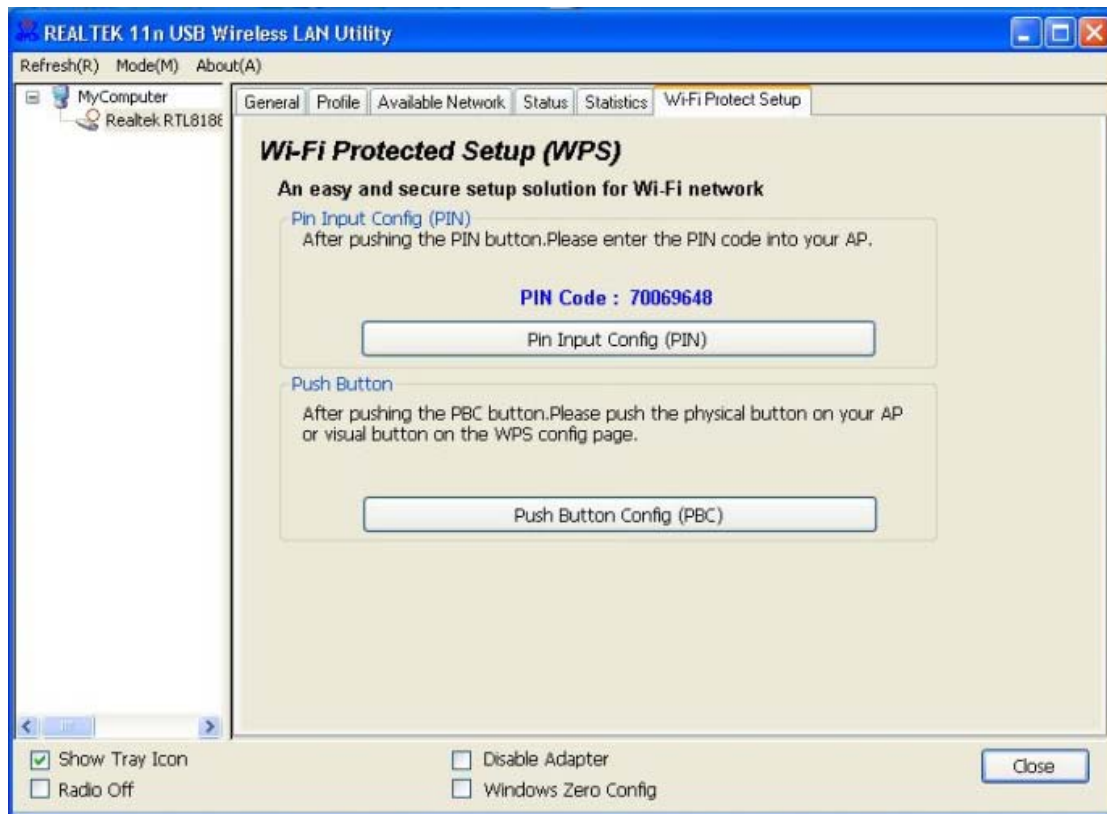


Figure 7

Figure 7

6. FAQ

This chapter provides solutions to problems usually encountered during the installation and operation of the adapter

1. The Wireless USB Adapter does not work properly.

Reinsert the Wireless USB Adapter into your PC's USB slot. Right click My Computer and select Properties. Select the device manager and click on the Network Adapter. You will find the Adapter if it is installed successfully. If you see the yellow exclamation mark, the resources are conflicting. You will see the status of the Adapter. If there is a yellow question mark, please check the following:

Make sure that your PC has a free IRQ (Interrupt ReQuest, a hardware interrupt on a PC.)

Make sure that you have inserted the right adapter and installed the proper driver.

If the Adapter does not function after attempting the above steps, remove the adapter and do the following:

Uninstall the driver software from your PC.

Restart your PC and repeat the hardware and software installation as specified in this User Manual.

2. I cannot communicate with the other computers linked via Ethernet in the Infrastructure configuration.

Make sure that the PC to which the Adapter is associated is powered on.

Make sure that your Adapter is configured on the same channel and with the same security options as with the other computers in the Infrastructure configuration.

3. What should I do when the computer with the Adapter installed is unable to connect to the wireless network and/or the Internet?

Check that the LED indicators for the broadband modem are indicating normal activity. If not, there may be a problem with the broadband connection.

Check that the LED indicators on the wireless router are functioning properly. If not, check that the AC power and Ethernet cables are firmly connected.

Check that the IP address, subnet mask, gateway, and DNS settings are correctly entered for the network.

In Infrastructure mode, make sure the same Service Set Identifier (SSID) is specified on the settings for the wireless clients and access points.

In Ad-Hoc mode, both wireless clients will need to have the same SSID. Please note that it might be necessary to set up one client to establish a BSS (Basic Service Set) and wait briefly before setting up other clients. This prevents several clients from trying to establish a BSS at the same time, which can result in multiple singular BSSs being established, rather than a single BSS with multiple clients associated to it.

Check that the Network Connection for the wireless client is configured properly.

If Security is enabled, make sure that the correct encryption keys are entered on both the Adapter and the access point.