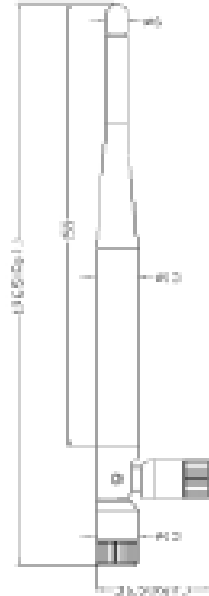


# SPECIFICATION

Part Name ----- 2.4/5.xGHz Dual-Band Antenna  
 Part Number ----- 200SPR-D



## *Electrical Properties*

Frequency Range

- a. 2.4~2.5GHz
  - b. 5.15~5.35GHz
  - c. 5.725~5.85GHz
- 50 Ohms nominal

Impedance

V.S.W.R

≤2.0

Gain 2.4~2.5GHz

2 dB

5.15~5.35GHz

2 dB

5.725~5.85GHz

2 dB

## *Mechanical Properties:*

Cable

RG-178

Antenna Cover

Polyurethane (TPE)

Antenna Base

Polyurethane (ABS)

Connector

SMA Plug Reserse

Color

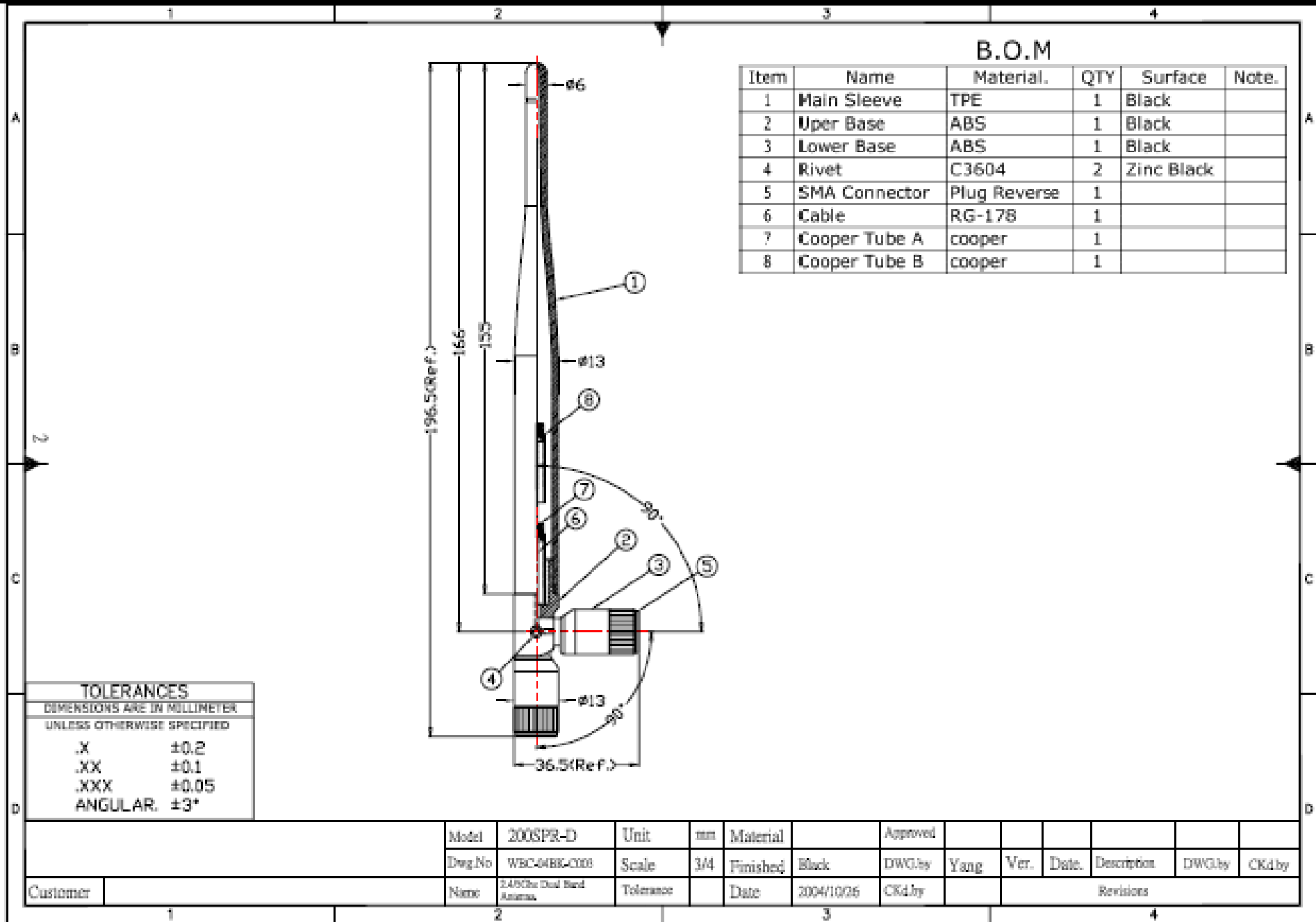
Black

Operation Temperature

-20°C ~+65°C

Storage Tempersture

-30°C ~+75°C



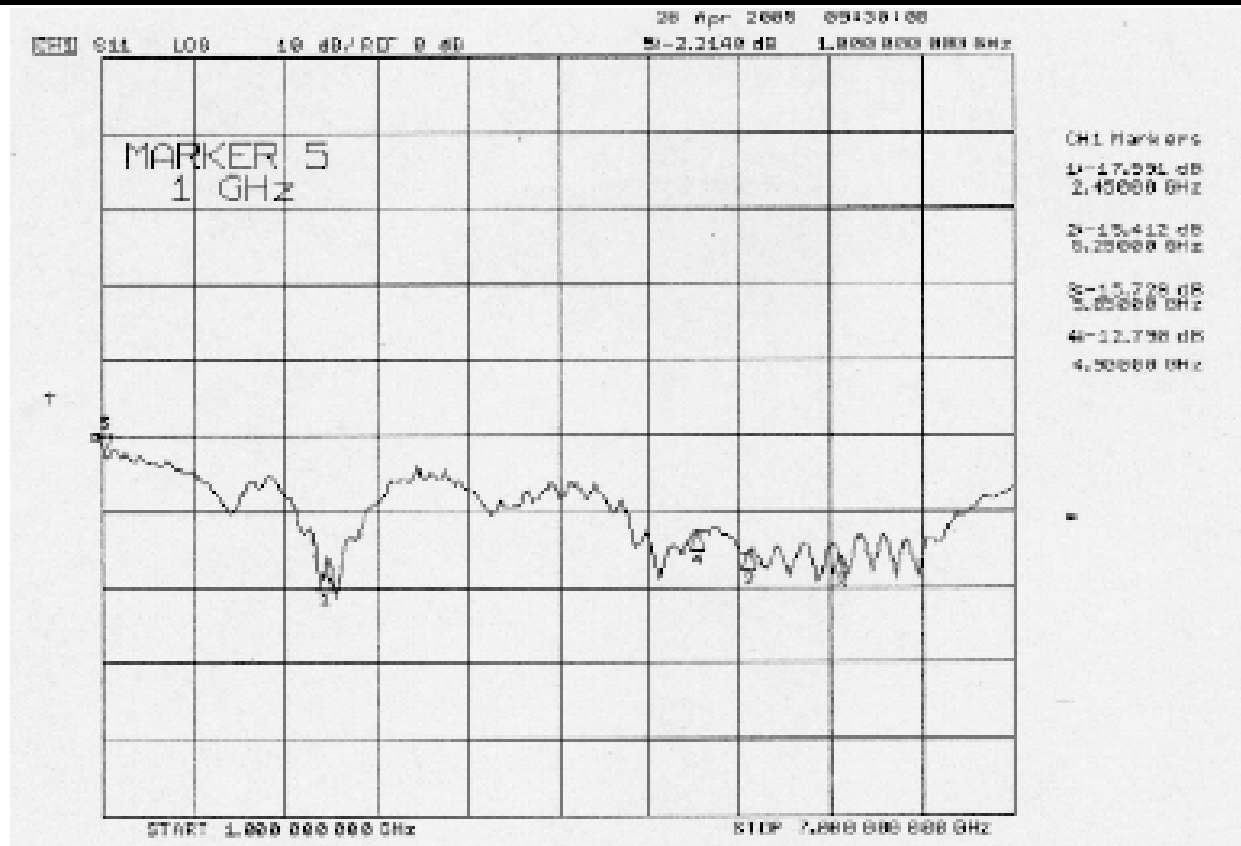
**B.O.M**

Item	Name	Material.	QTY	Surface	Note.
1	Main Sleeve	TPE	1	Black	
2	Upper Base	ABS	1	Black	
3	Lower Base	ABS	1	Black	
4	Rivet	C3604	2	Zinc Black	
5	SMA Connector	Plug Reverse	1		
6	Cable	RG-178	1		
7	Cooper Tube A	cooper	1		
8	Cooper Tube B	cooper	1		

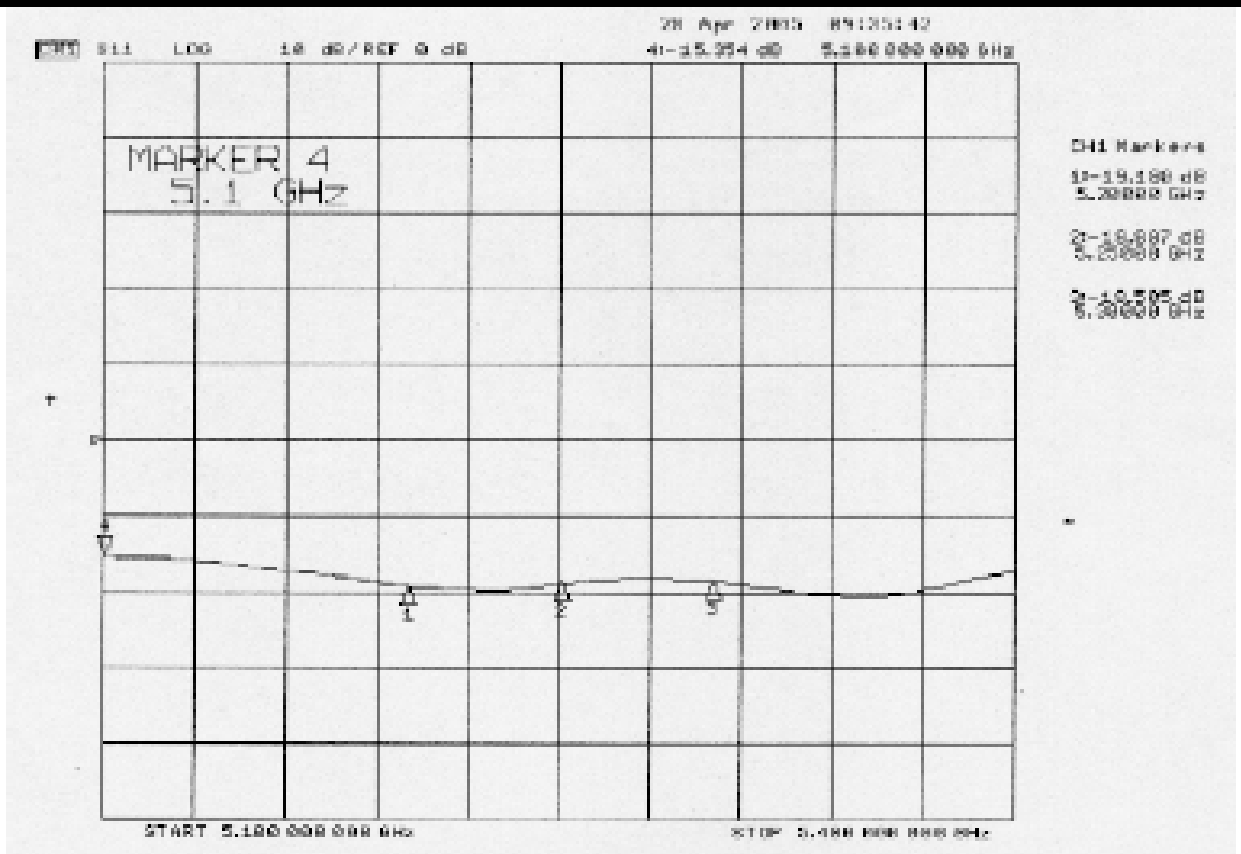
TOLERANCES	
DIMENSIONS ARE IN MILLIMETER UNLESS OTHERWISE SPECIFIED	
.X	±0.2
.XX	±0.1
.XXX	±0.05
ANGULAR.	±3°

	Model	200SPR-D	Unit	mm	Material		Approved						
	Dwg.No	WBC-04BK-0008	Scale	3/4	Finished	Black	DWG.by	Yang	Ver.	Date.	Description	DWG.by	CKd by
Customer	Name	EASPCB Dual Band Antenna	Tolerance		Date	2004/10/26	CKd by		Revisions				

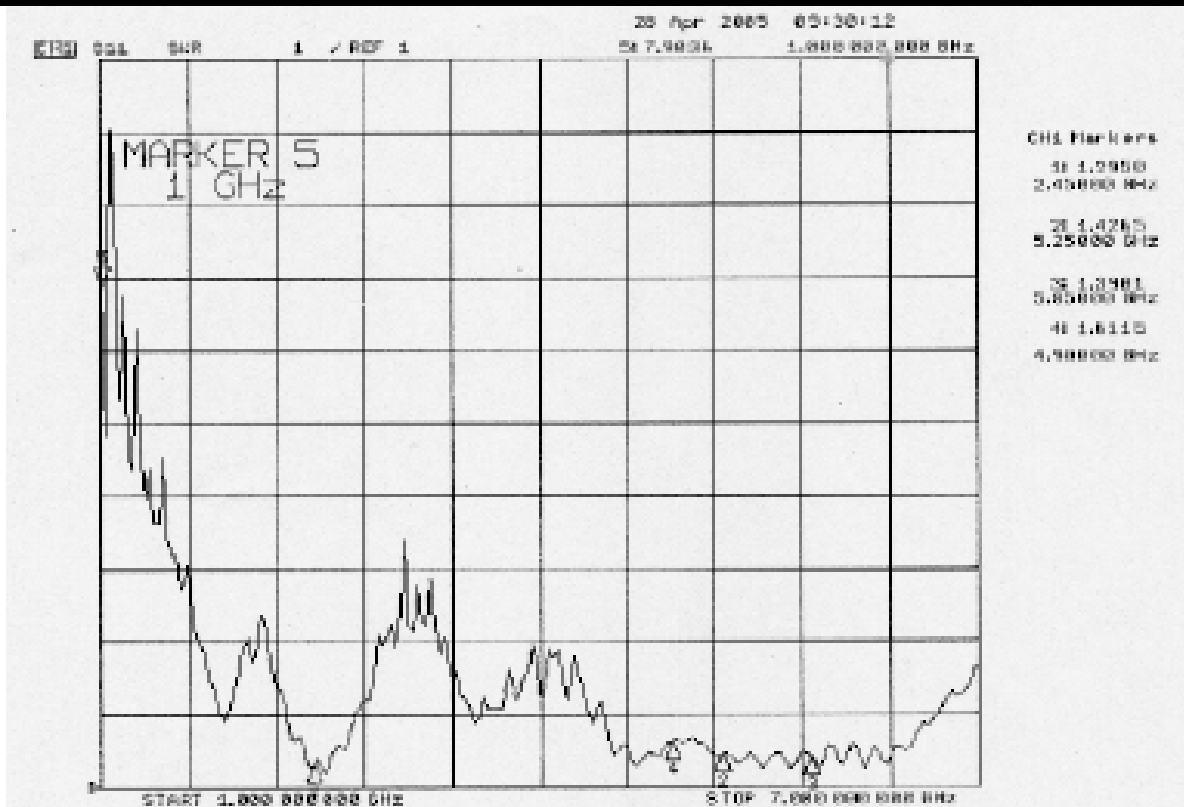
# RETURN LOSS :Frequency Range-1Ghz~7Ghz



# RETURN LOSS :Frequency Range-5.1Ghz~5.4Ghz



# V.S.W.R :Frequency Range-1Ghz~7Ghz



# V.S.W.R :Frequency Range-5.1Ghz~5.4Ghz

