

Tecnical Data Sheet

Chip Antenna

Type: **WE-MCA**

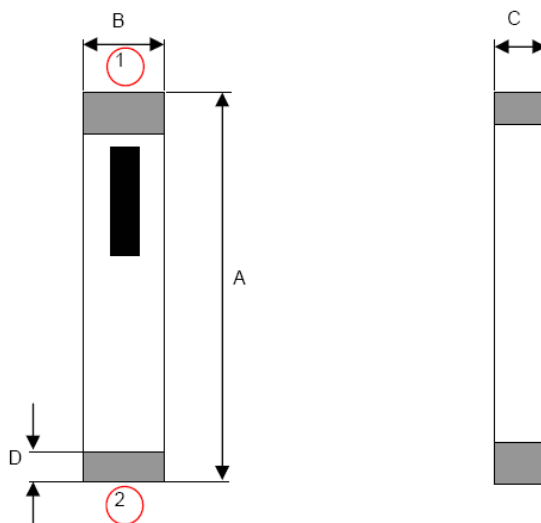
Material: base: Ceramic contacts: Ag + Ni + Sn

Electrical Characteristics

Frequency:	2400 - 2500 MHz
Nominal Impedance:	50 ohm
SWR:	2
Gain:	1 dBi
Polarization:	Linear
Power withstanding:	1 W
Cable type:	RFX50-SS32-132
Connectors:	2 x U.FL
Cable length:	50 mm

Mechanical Characteristics

Size: 9,5 x 2 mm



A	9,5 ± 0,2	mm
B	2,0 ± 0,2	mm
C	1,2 +0,1/- 0,2	mm
D	0,5 ± 0,3	mm

①	Feeding Point	
②	NC	