



# Internal / External Photos

Project: EXA51  
Filename: NordicID\_EXA51\_EXA51e\_Internal\_External\_Photos

Version: 1.0  
Date: 29.12.2017

Prepared by: Rauno Nikkilä  
Checked by:  
Accepted by: Mika Karttunen

Distribution:

Nordic ID EXA51 / EXA51e Internal / External Photos

Change history:

Version:	Date:	Author:	Remarks:
1.0	10.03.2017	Rauno Nikkilä	First version
2.0	19.09.2017	Rauno Nikkilä	EXA51e internal photos added

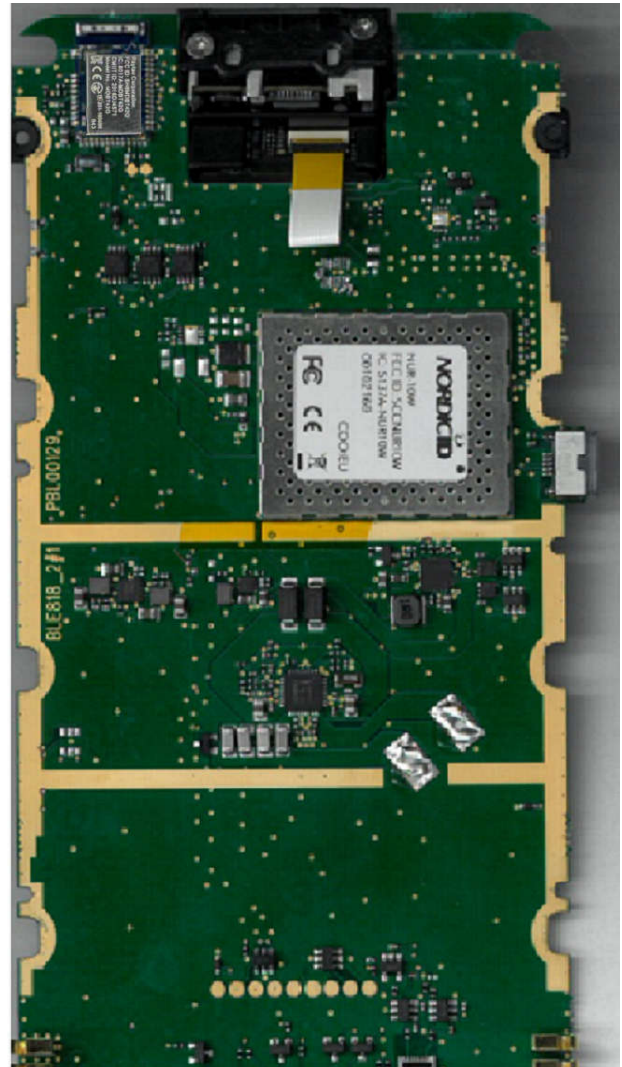
## Table of Contents

1. BLE818 board .....	4
2. External photos .....	8

# 1 BLE818 board

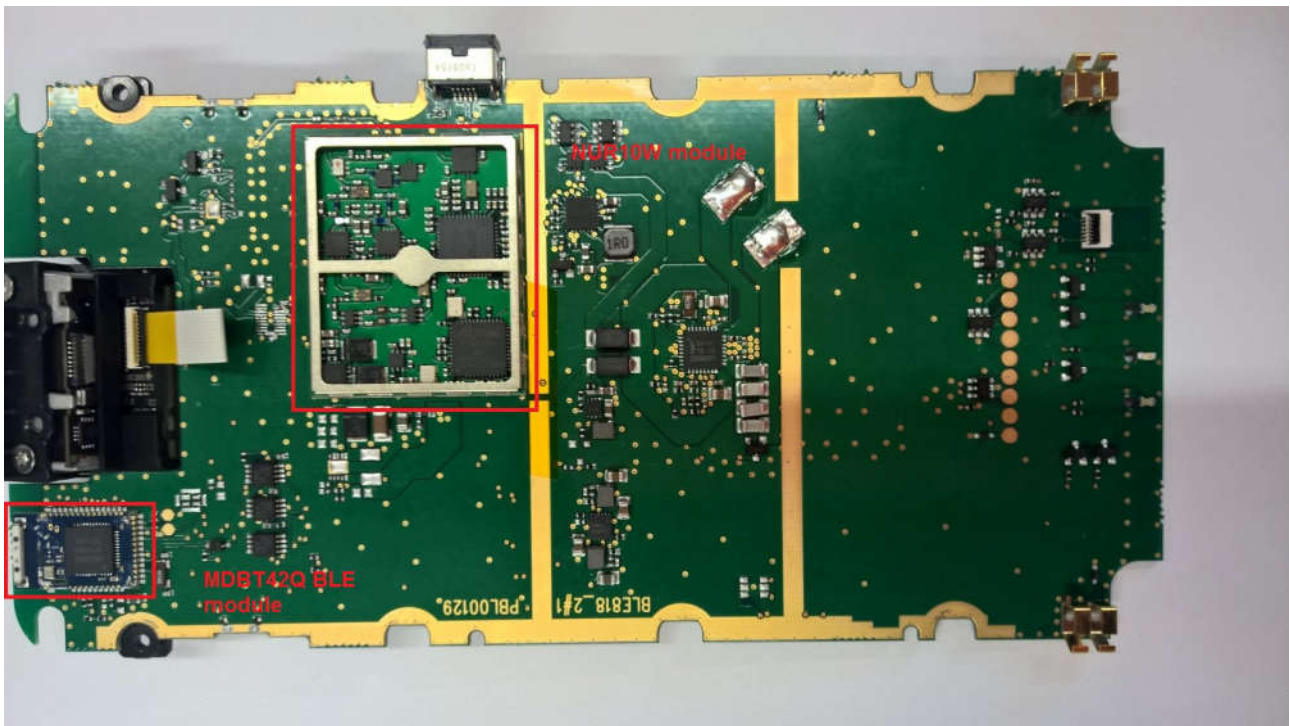


Pic.1:EXA51 CPU board bottom view.

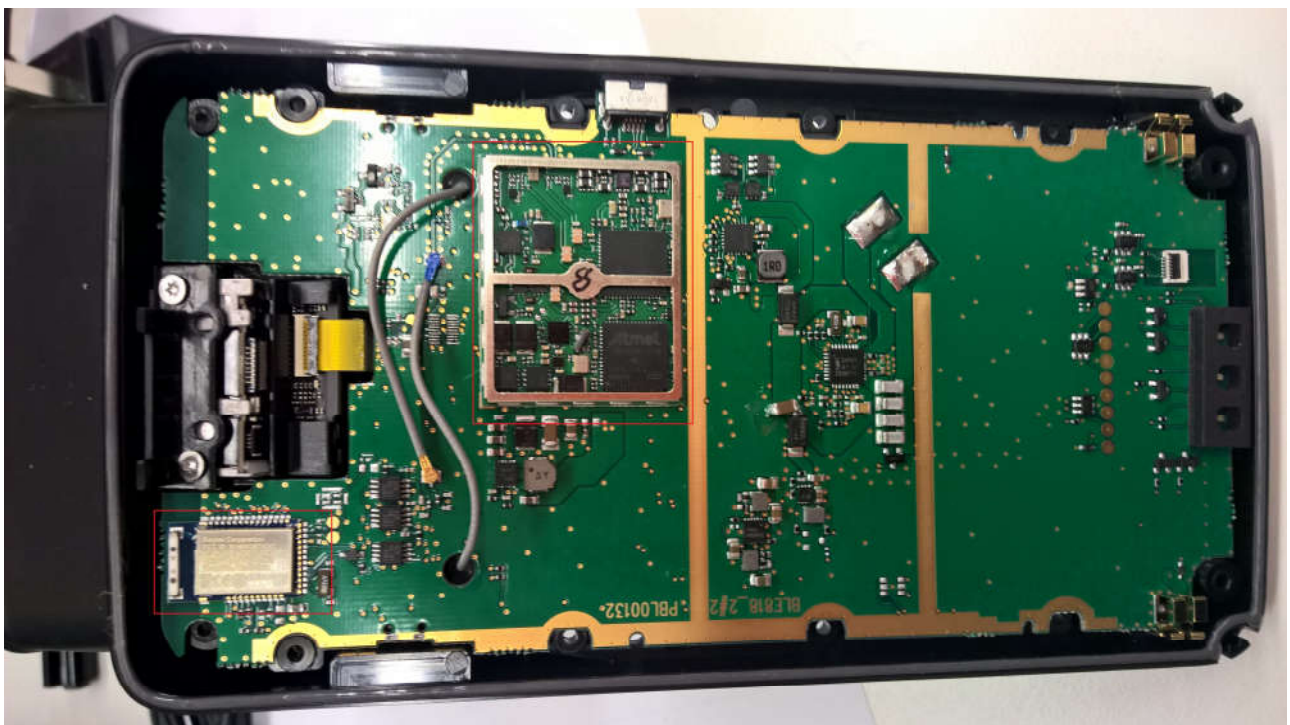


Pic.2: EXA51 CPU board top view. BLE module type lab label size increased in separate pic.

Nordic ID EXA51 / EXA51e Internal / External Photos



Pic. 3: EXA51 CPU board TOP view. NUR10W and MDBT42Q modules without RF shields.



Pic. 4: EXA51e CPU board TOP view. NUR2-1W without RF shield and MDBT42Q BLE module location.

Nordic ID EXA51 / EXA51e Internal / External Photos



Pic. 4: EXA51e CPU board TOP view. NUR2-1W with RF shield and MBT42Q BLE module location.

Nordic ID EXA51 / EXA51e Internal / External Photos



Pic.5:EXA51e CPU board bottom view with type label.

**2. External photos**



Pic. 4: EXA51 / EXA51e Bottom view







Pic. 7: EXA51 / EXA51e Right side view.



Pic. 8: EXA51 / EXA51e Left side view.



Pic. 9: EXA51 / EXA51e front side view.



Pic. 10



Pic. 11

Pic.10 & 11 are illustrating that three different plastic parts are red color in Alien ALR-S351. Part no 1= A cover. Part no 2= trigger. Part no 3= Front antenna cover