

Internal_External photos

Project: Merlin CD 805-2A / Merlin CD ONE 805-2F
Filename: Merlin CD 805-2A_2F Internal_External_Photos

Version: 1.0
Date: 09.02.2017

Prepared by: Rauno Nikkilä
Checked by:
Accepted by: Mika Karttunen

Distribution:
Change history:

Version:	Date:	Author:	Remarks:
1.0	02.02.2017	Rauno Nikkilä	First release
1.1	15.02	Rauno Nikkilä	SSD40NBT module without shield added

Table of Contents

1. MERLIN 805-2C PHOTOS AND TYPE LABEL.....	3
---	---

1. MERLIN CD 805-2A / CD ONE 805-2F PHOTOS AND TYPE LABEL



Picture 1. Merlin CD 805-2A / CD ONE 805-2F front side.



Picture 2. Merlin CD 805-2A / CD ONE 805-2F back side.



Picture 3. Merlin CD 805-2A / CD ONE 805-2F right side.



Picture 4. Merlin CD 805-2A / CD ONE 805-2F left side.



Picture 5. Merlin CD 805-2A / CD ONE 805-2F top side.



Picture 6. Merlin CD 805-2A / CD ONE 805-2F bottom side.



Picture 7. Merlin CD pistol grip and battery removed.

Nordic ID Merlin CoO:EU

Merlin CD UHF 1DLsr WLAN

Cfg: 101127E-26-320060000

Type: HTE00060 Model: 805-2A

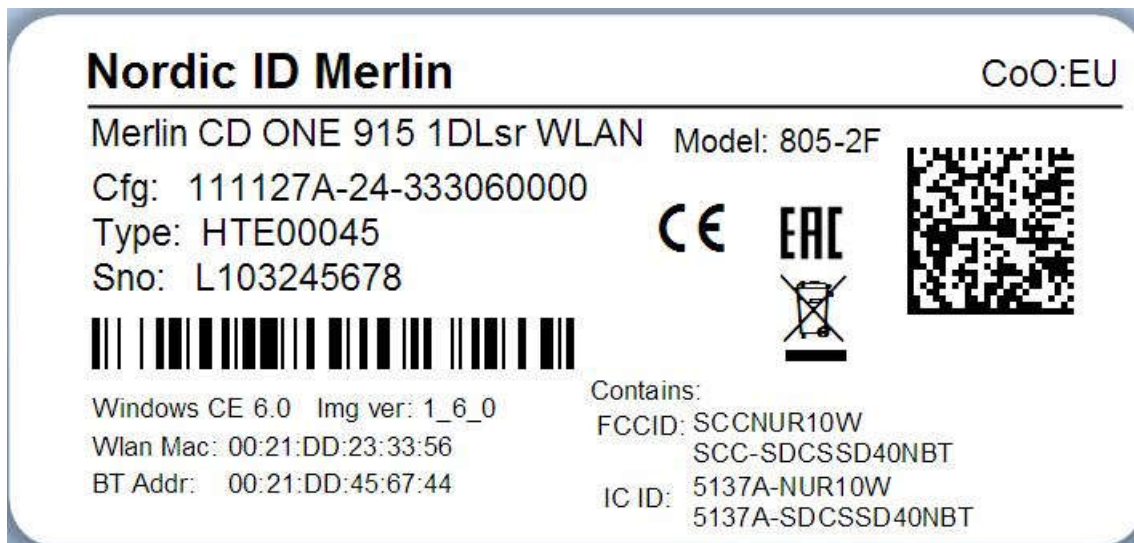
Sno: L10483132



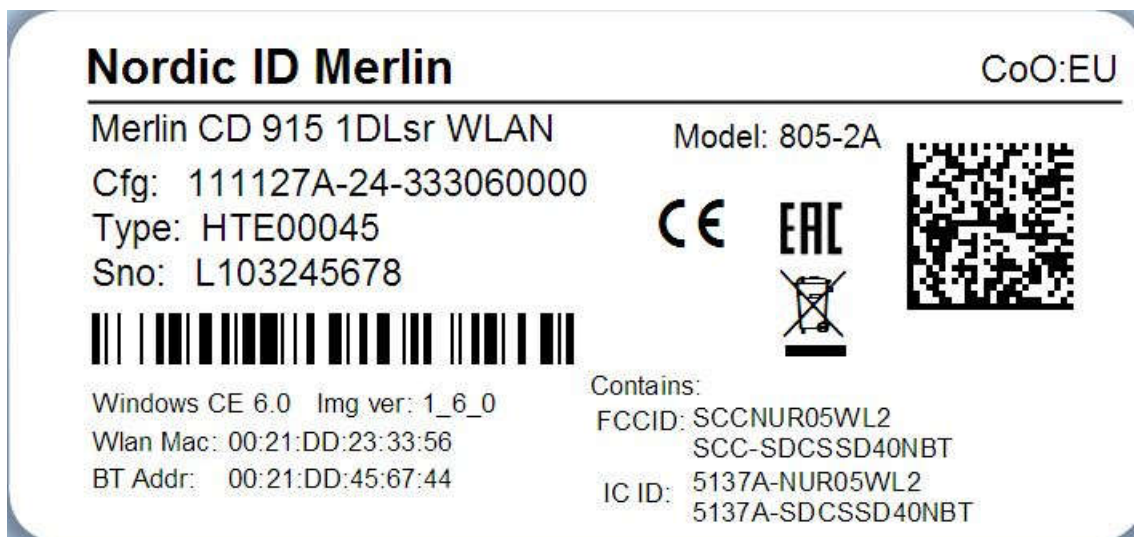
Wlan Mac: 00:17:23:A1:10:29

BT Addr: 00:21:AD:03:00:89

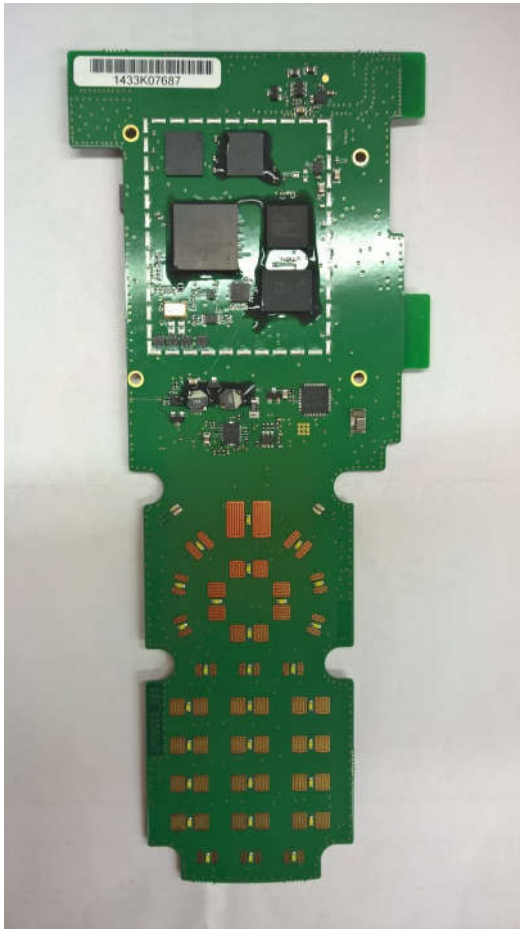
Picture 8. Merlin 805-2A type label design.



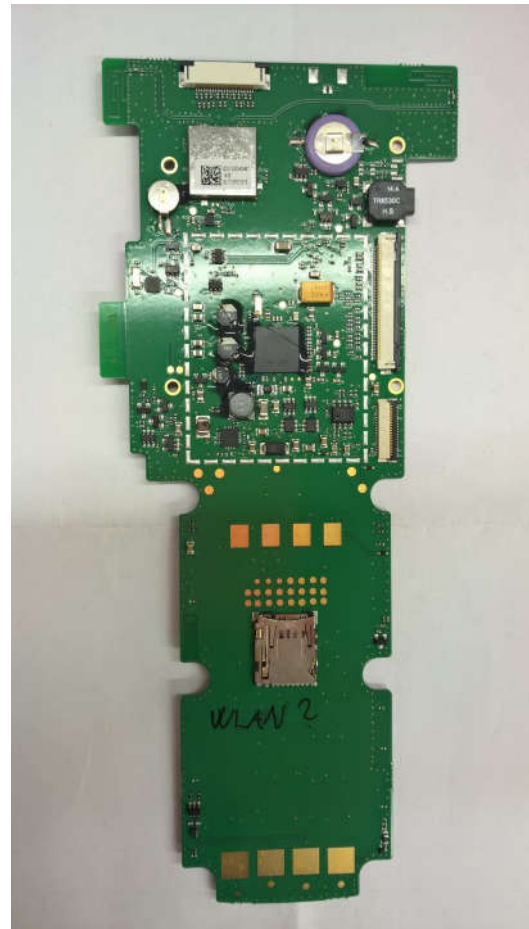
Picture 9. Merlin CD ONE 805-2F package label design.



Picture 10. Merlin CD 805-2A package label design.



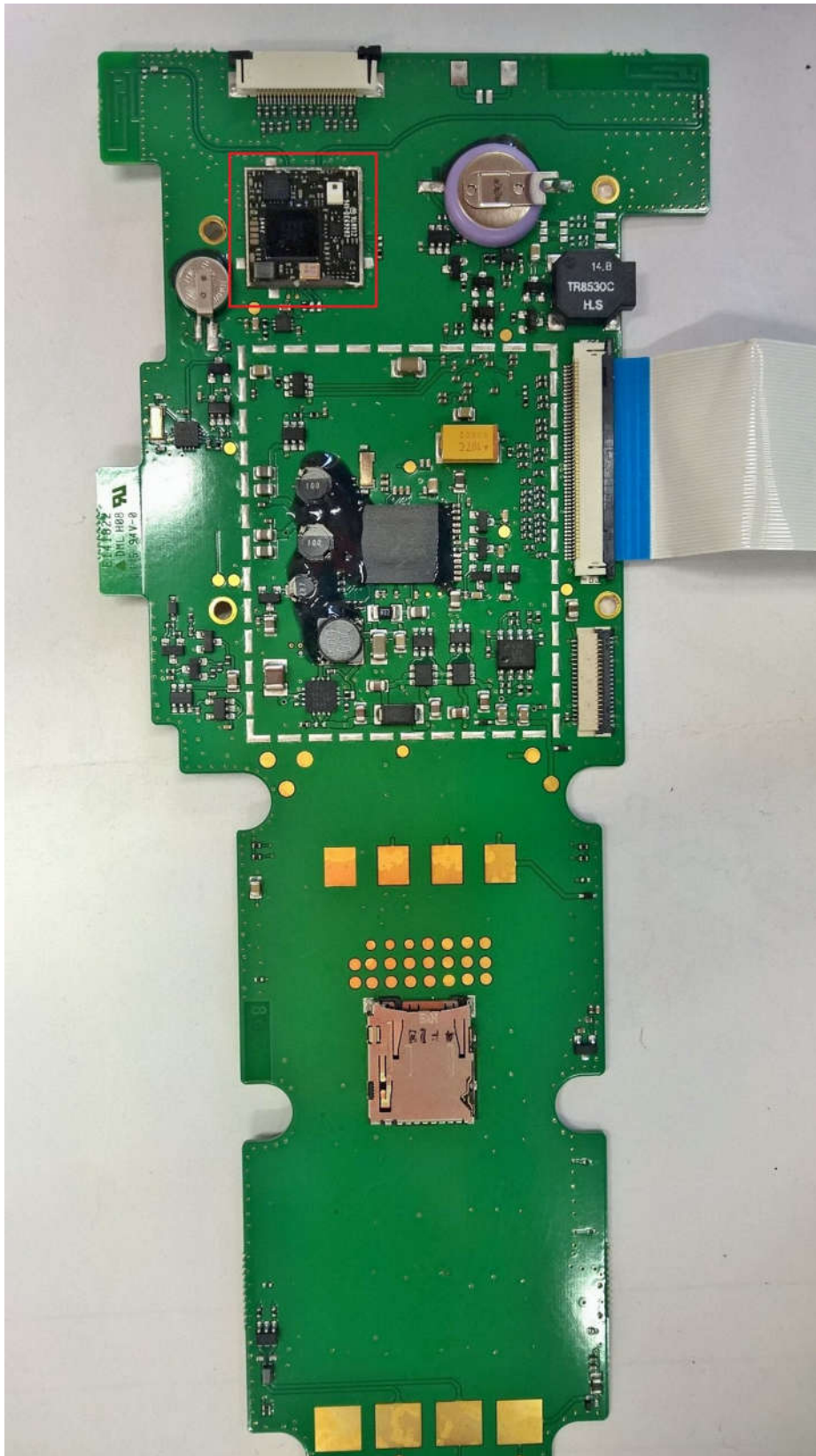
Picture 11. Merlin CD 805-2A main board top.



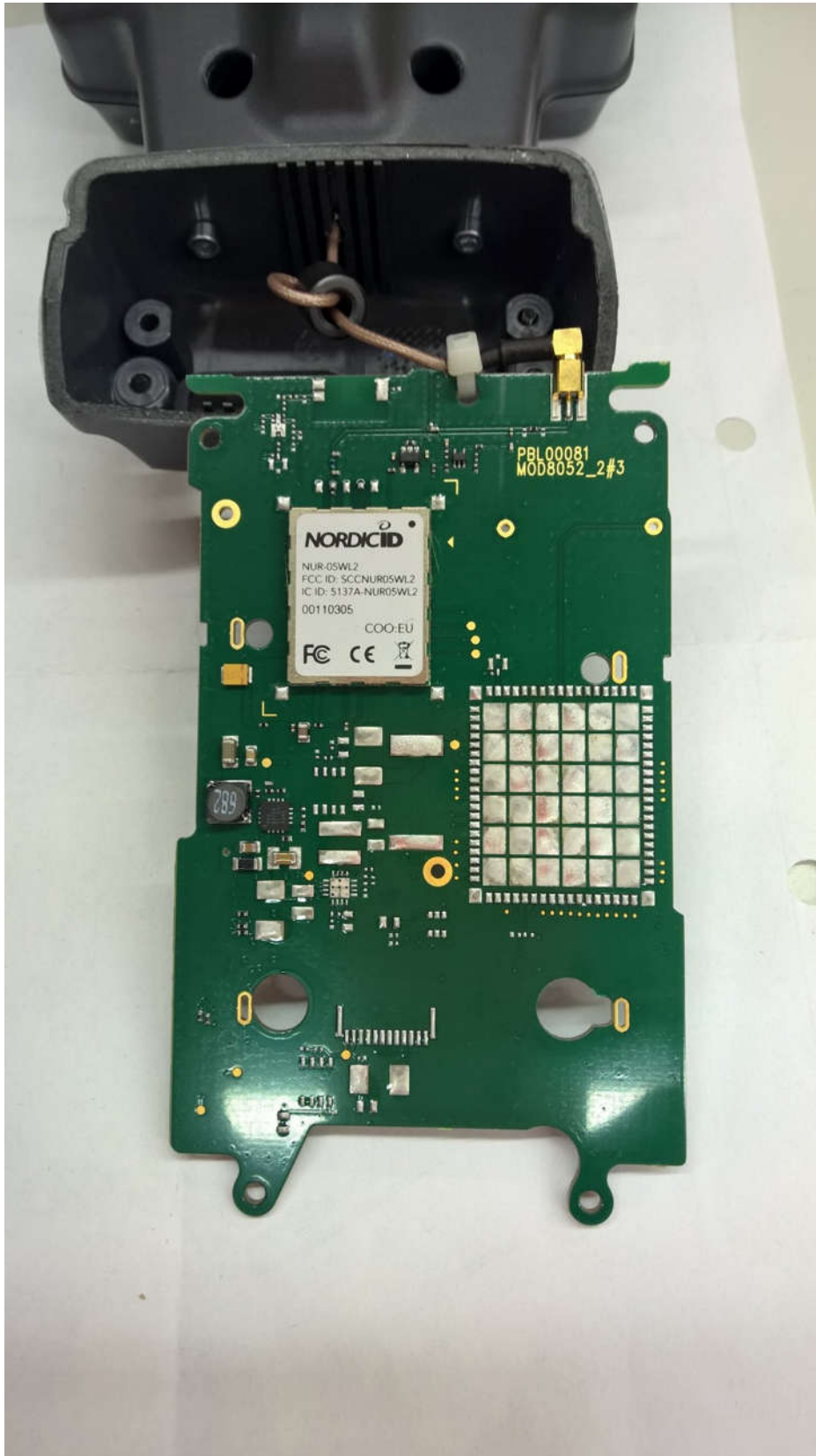
Picture 12. Merlin CD 805-2A main board bottom.



Picture 13. SDC-SSD40NBT module in Merlin CD 805-2A main board.



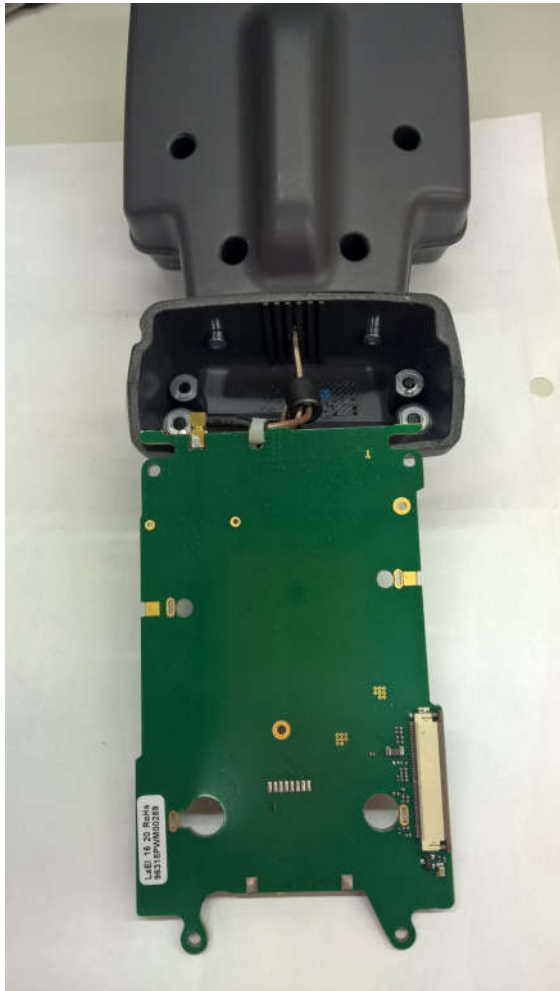
Picture 14. SDC-SSD40NBT module without shield.



Picture 15. NUR-05WL2 RFID module in Merlin CD 805-2A Mod board (top view).



Picture 16. NUR-10W RFID module in Merlin CD ONE 805-2F Mod board (top view).



Picture 17. Merlin CD 805-2A MOD board bottom.