

Technical Specification Sheet

World GSM Antenna — P/N 100709



Features

- Small and lightweight
- No tuning components
- Available in tape and reel or tray packing for automatic mounting

Electrical

Frequency Range	880 – 960 MHz; 1710 – 1990 MHz
Peak Gain ⁽¹⁾	+1 dBi; +1 dBi
VSWR ⁽¹⁾	< 2.5:1; < 2.5:1
Polarization	linear
Azimuth Beamwidth	omnidirectional
Power Handling	10 Watt cw
Feed Point Impedance	50 Ohms unbalanced

Note (1) Figures dependent on ground plane size

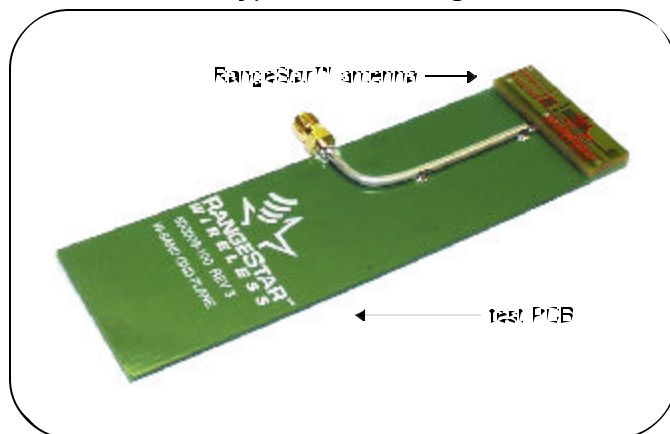
Mechanical

Size	37.59 x 11.94 x 2.77 mm
Weight	less than 2.5 g
Mounting	surface mounted technology

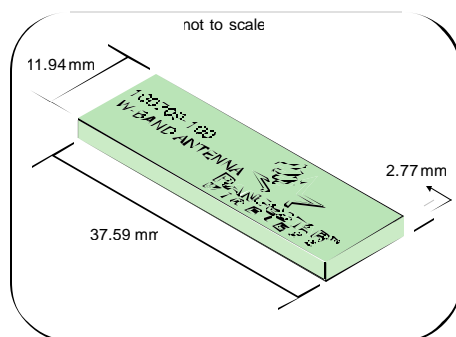
Ultima™ Series Antennas

This small embedded antenna provides the most reliable, easy-to-use, and adjustment-free antenna technology for handling during assembly and implementation by developers.

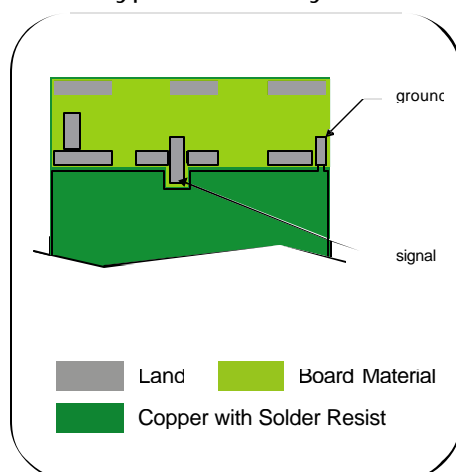
Typical Mounting



Dimensions

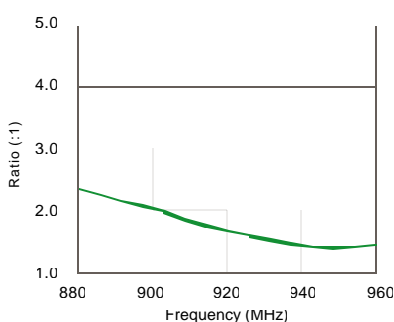


Typical Pad Layout

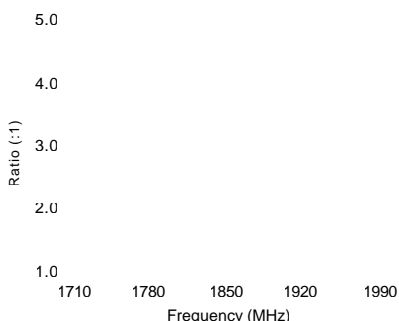


Typical VSWR

900 MHz Band

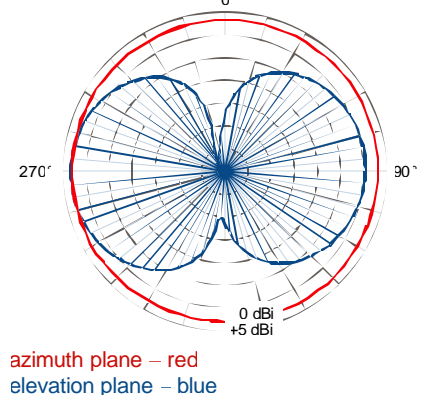


1800 MHz Band



Typical Pattern

900 MHz Band



1800 MHz Band

