

Figure 15
Output Transformer View

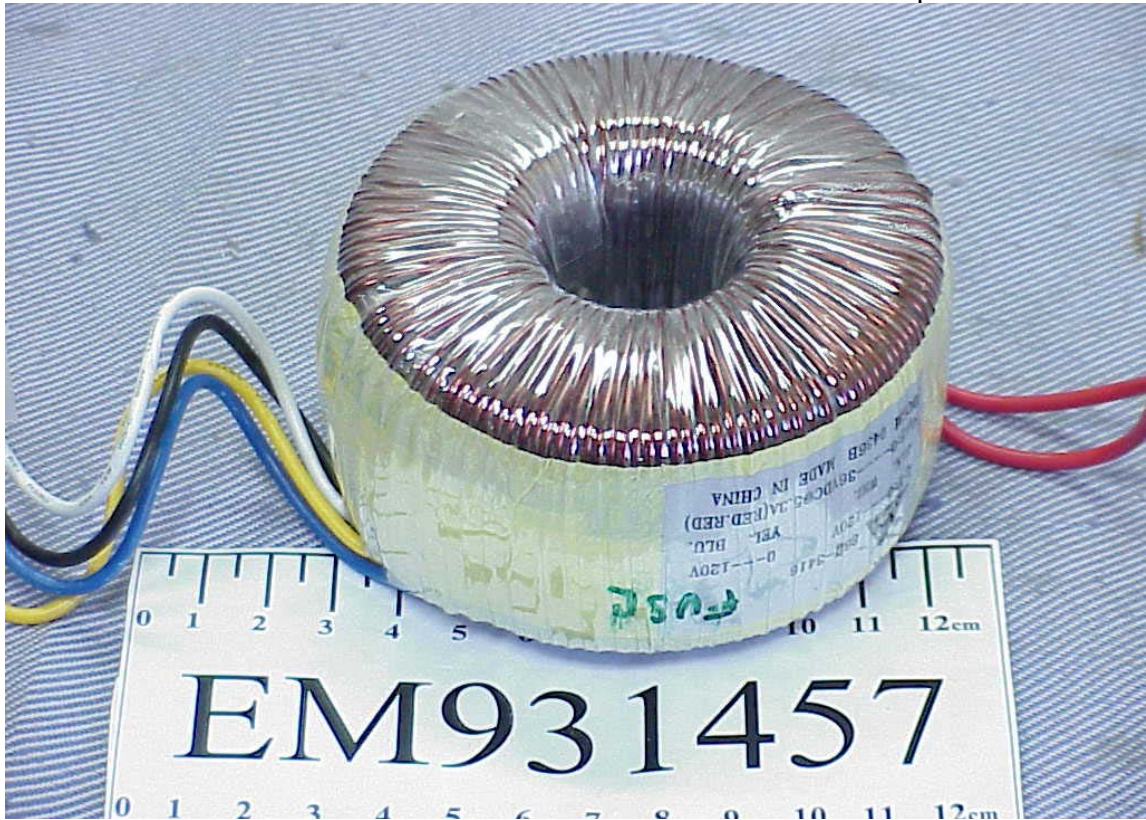


Figure 16
Removed Audio Control Board, Internal View

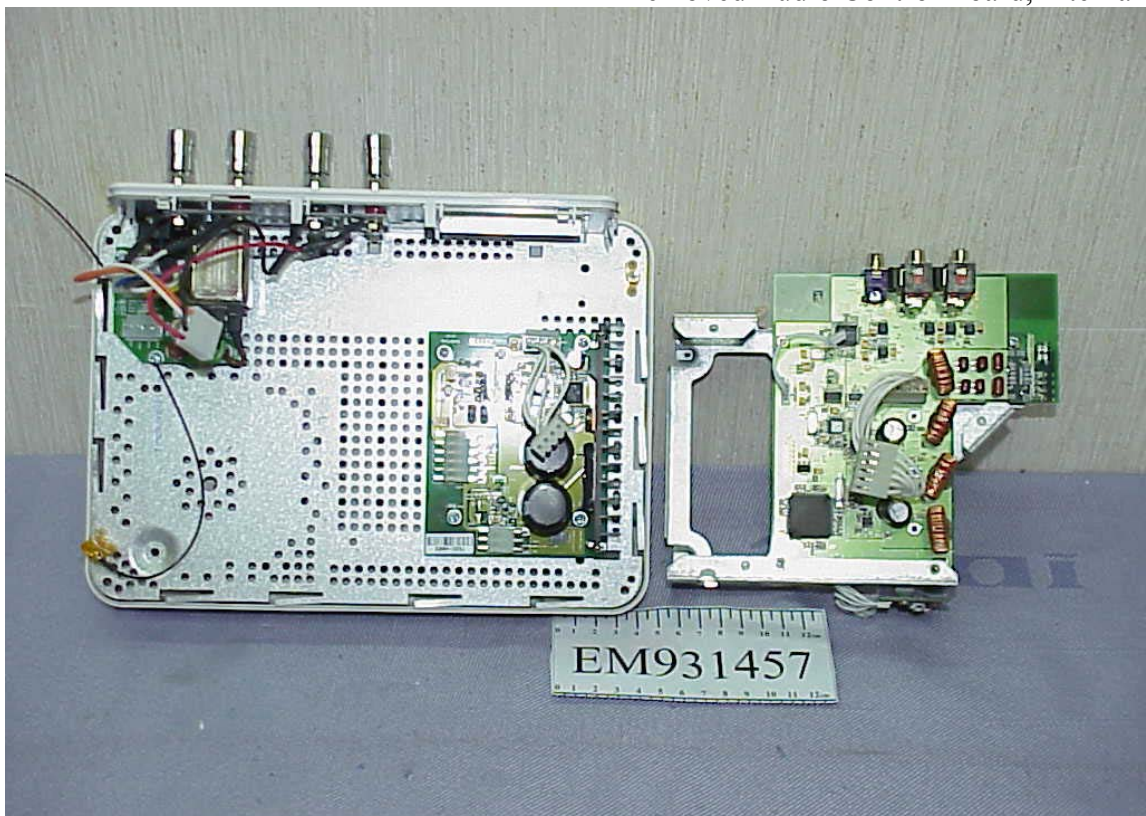


Figure 17
Audio Control Board (Front Side)

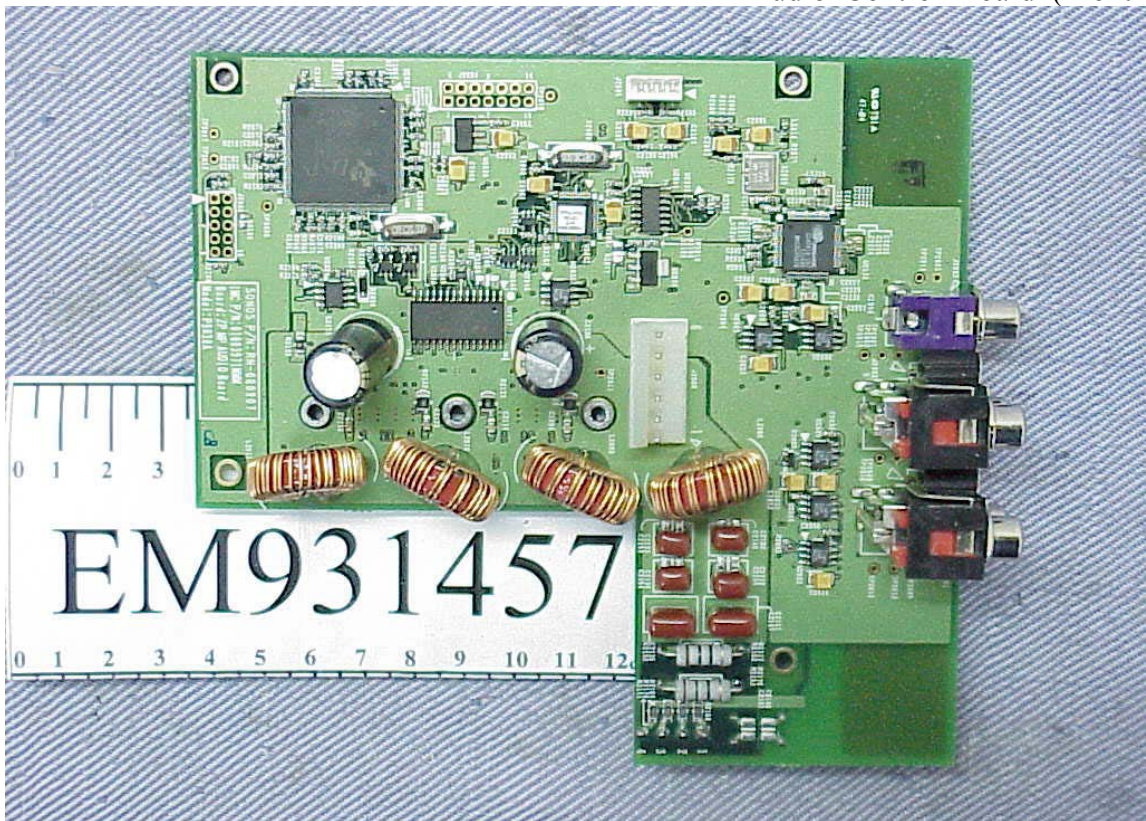


Figure 18
Audio Control Board (Back Side)

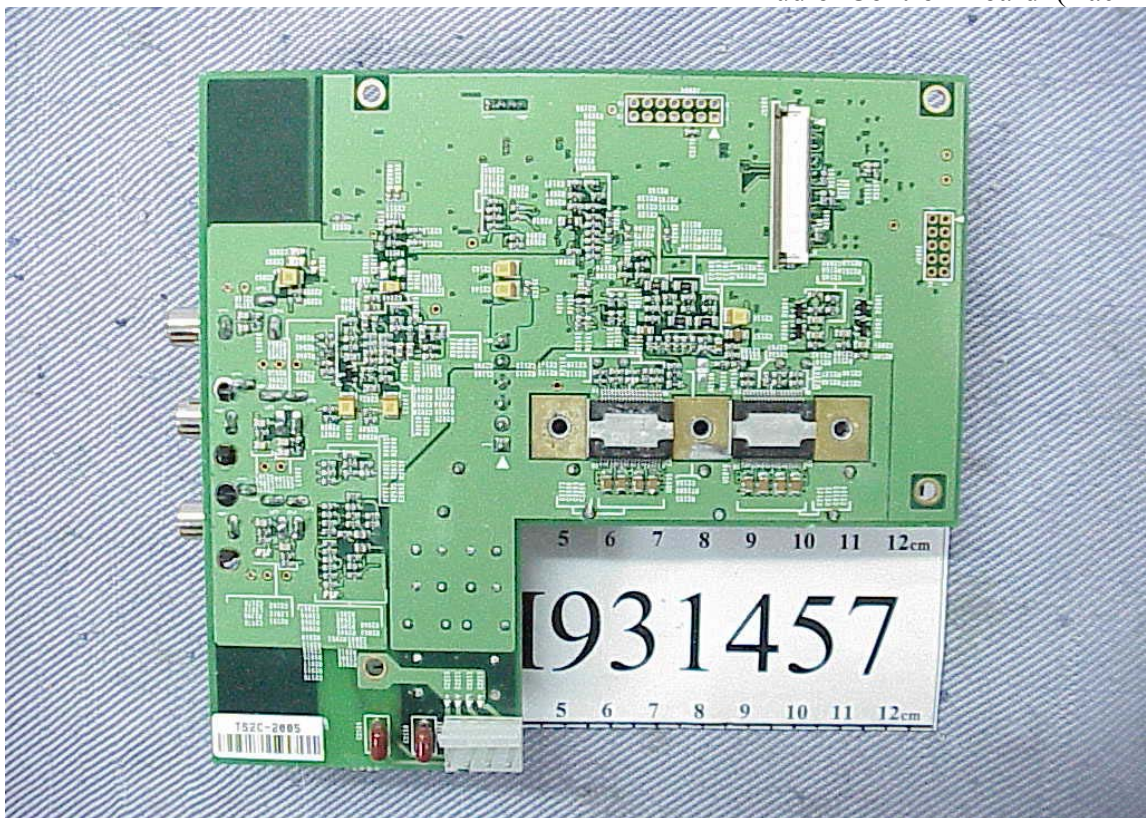


Figure 19
Function Button Control Board (Front Side)

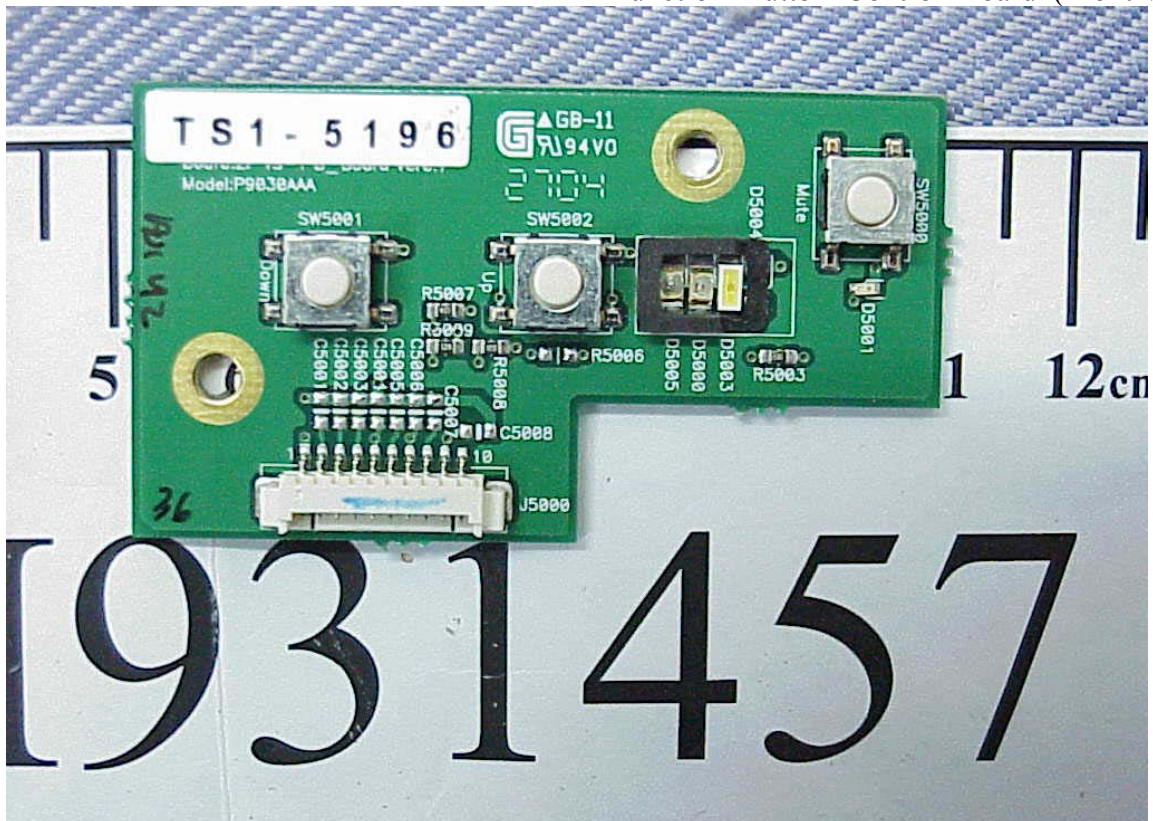


Figure 20
Function Button Control Board (Back Side)

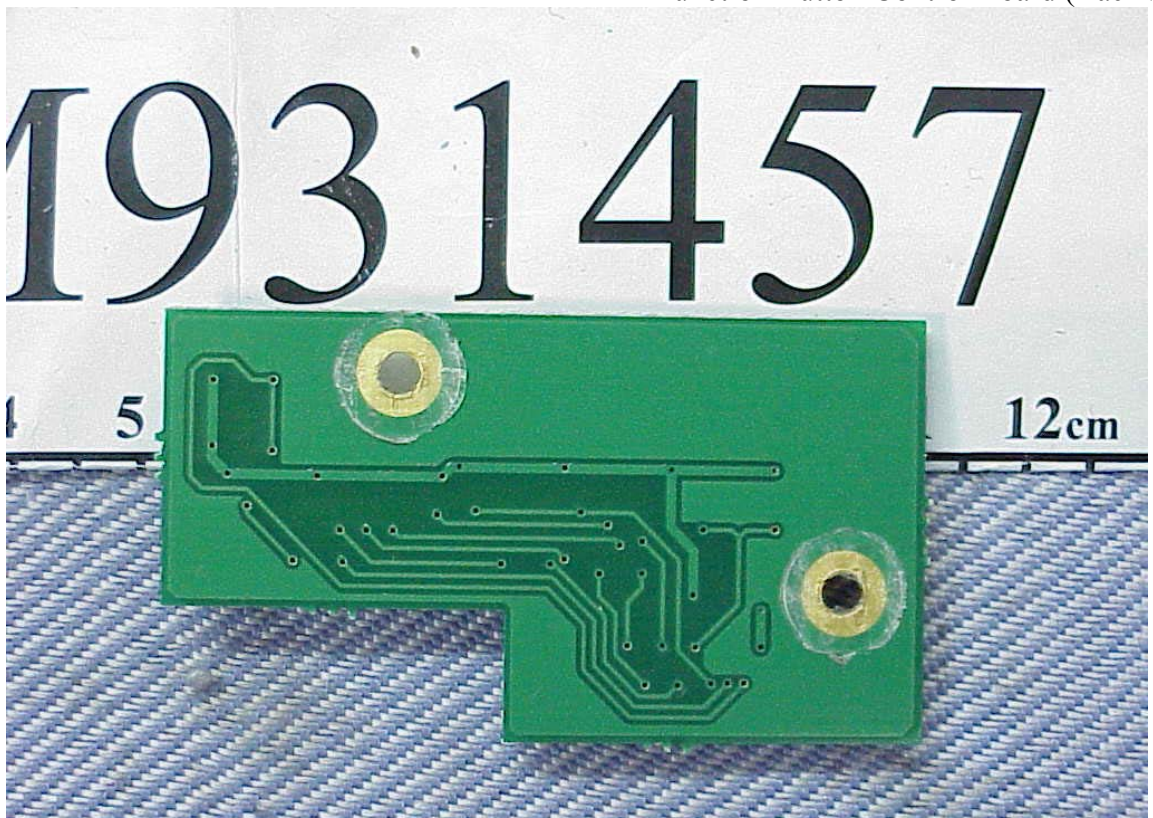


Figure 21
Internal View

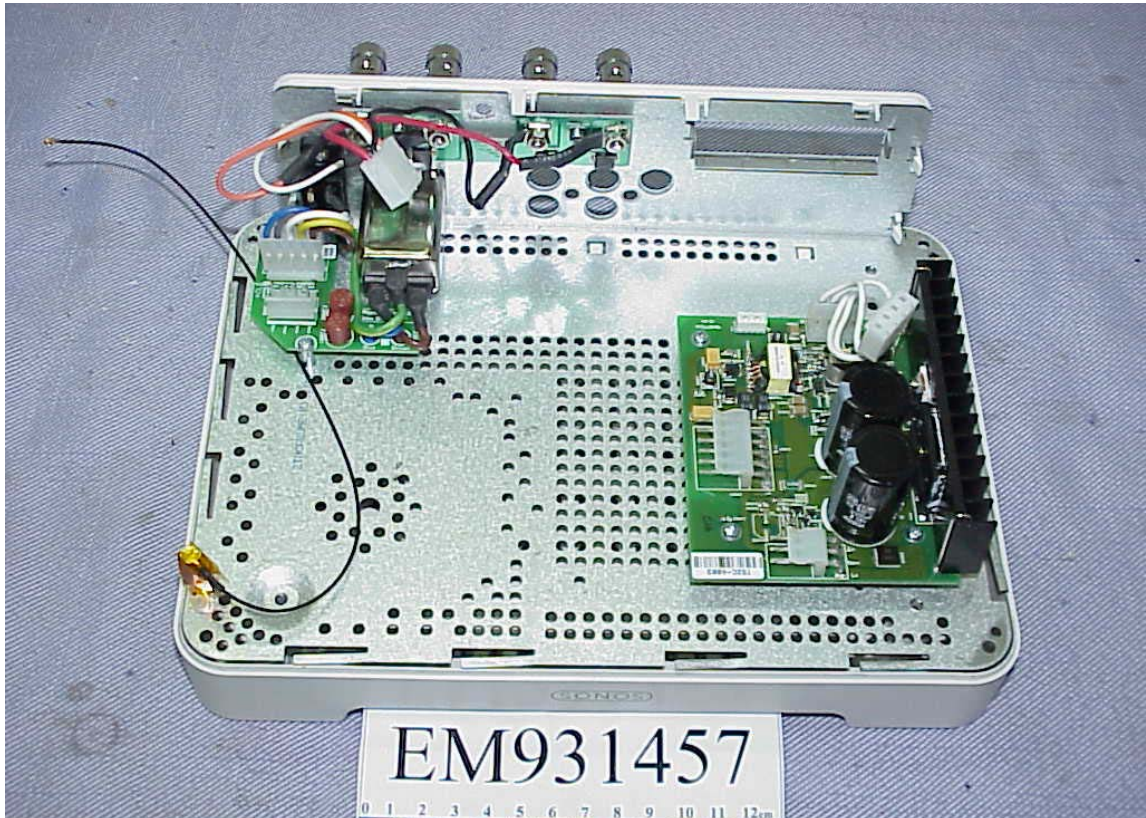


Figure 22
Empty Bottom Cover

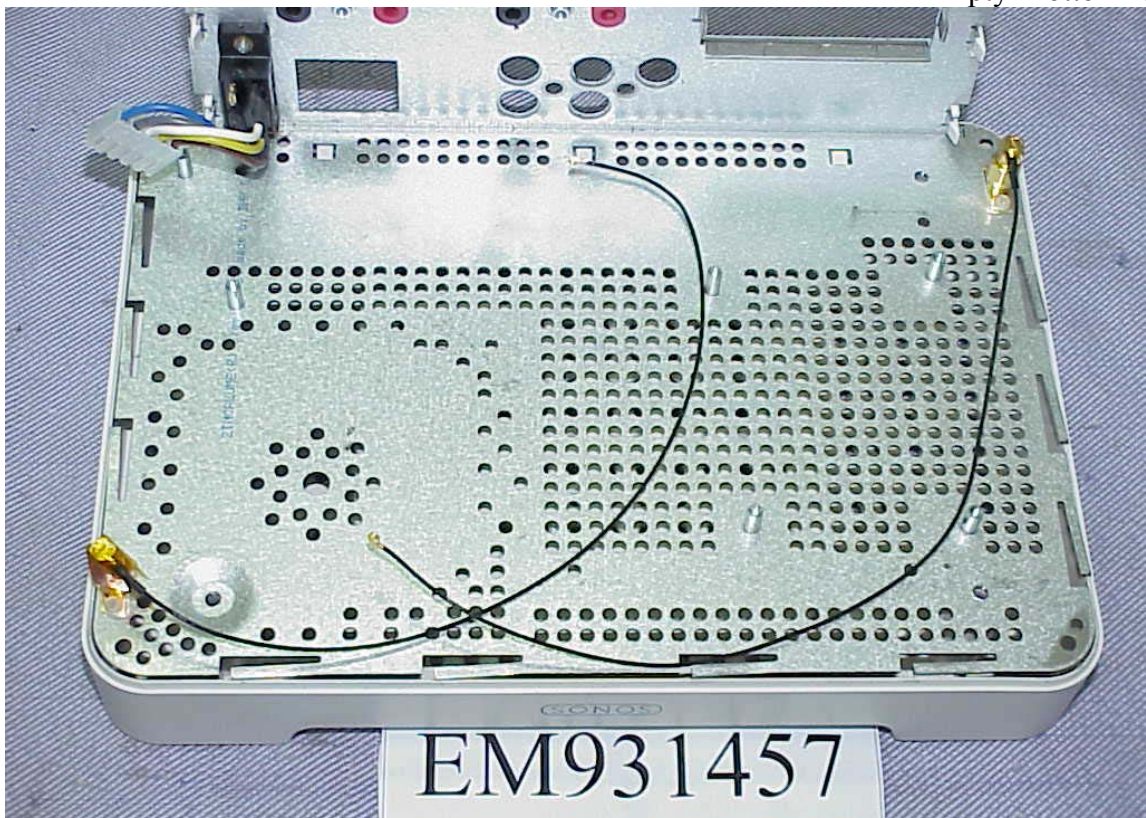


Figure 23
Power Amplifier Control Board (Front Side)

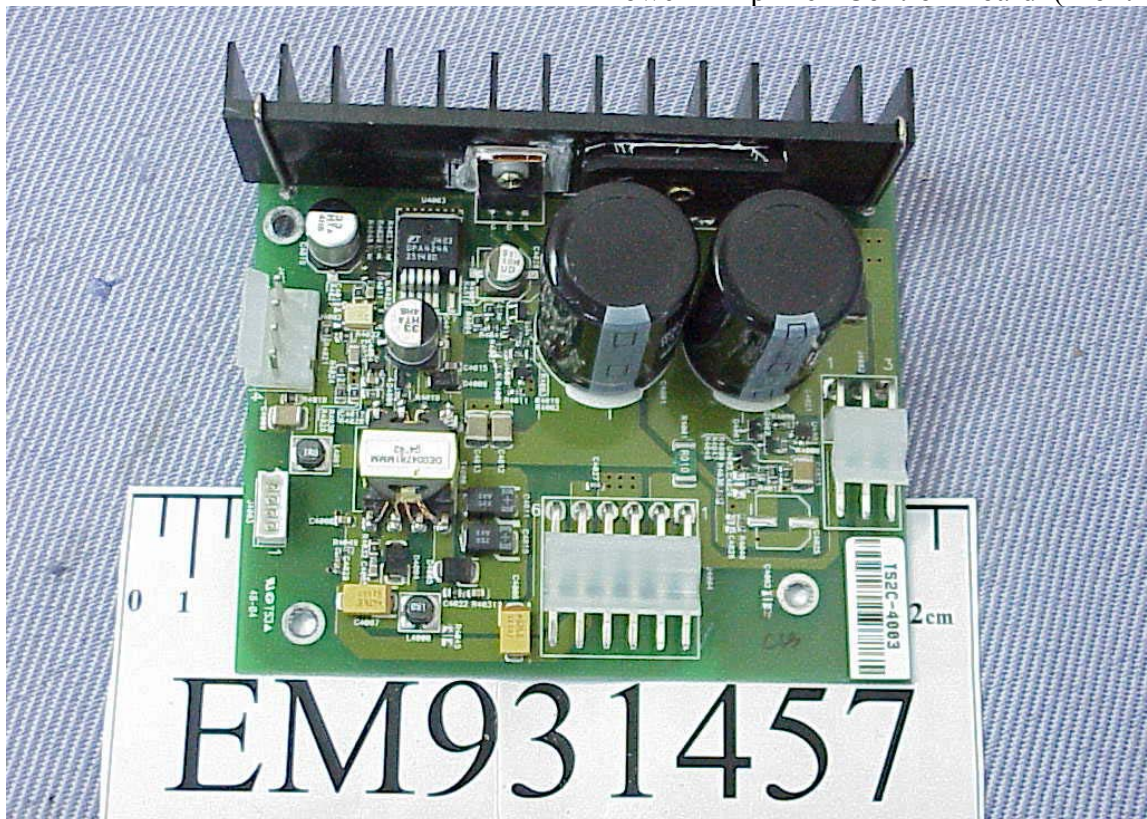


Figure 24
Power Amplifier Control Board (Back Side)

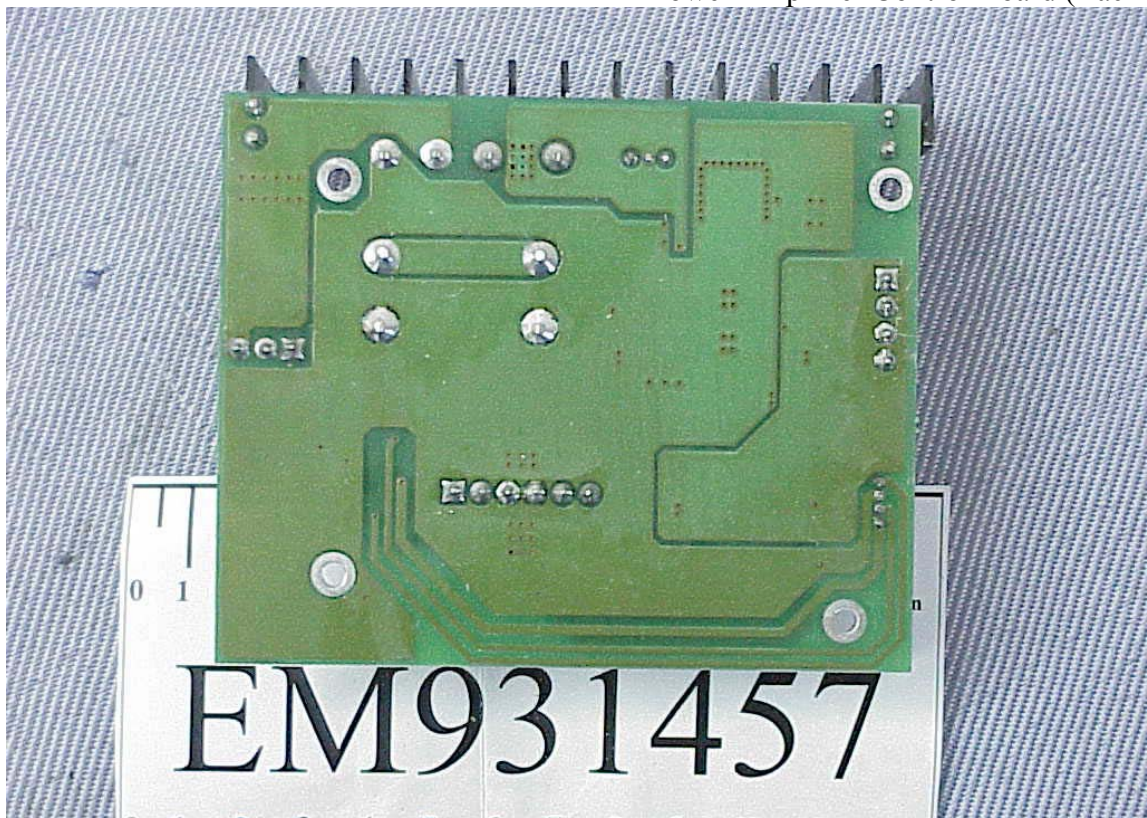


Figure 25
ESD Board (Front Side)

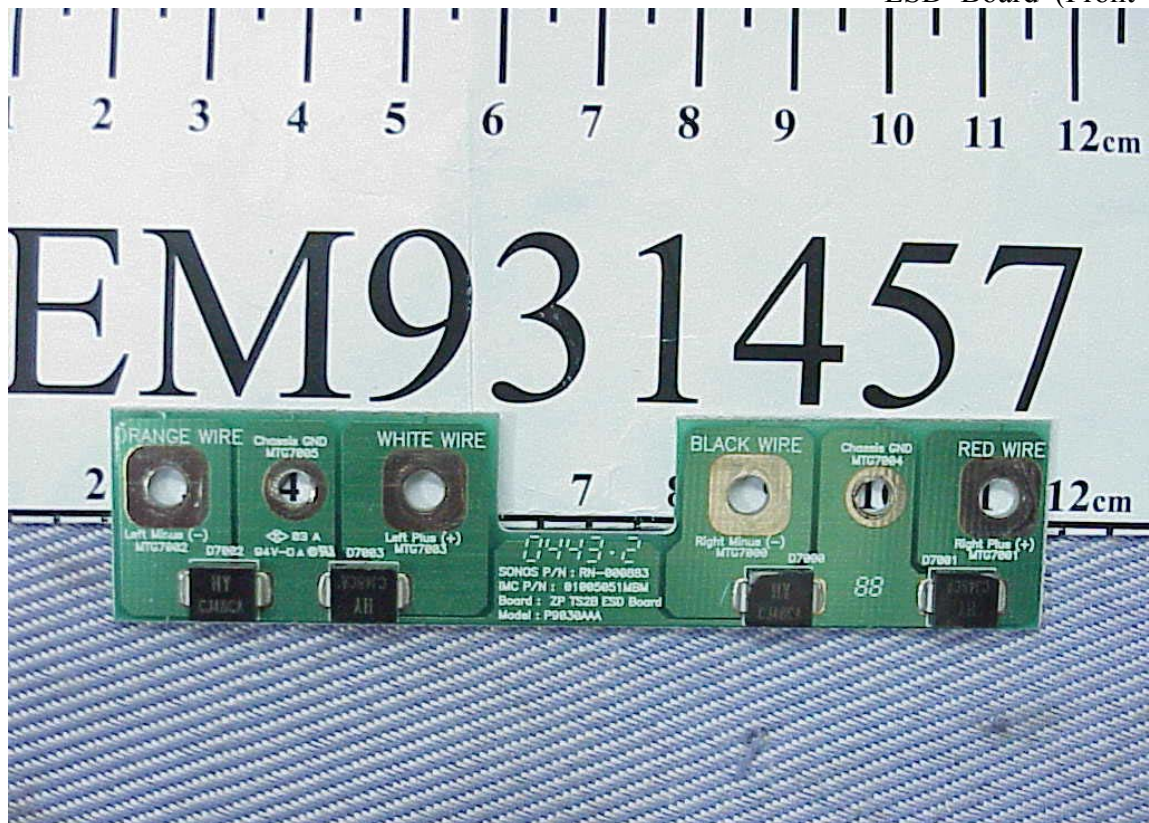


Figure 26
ESD Board (Back Side)

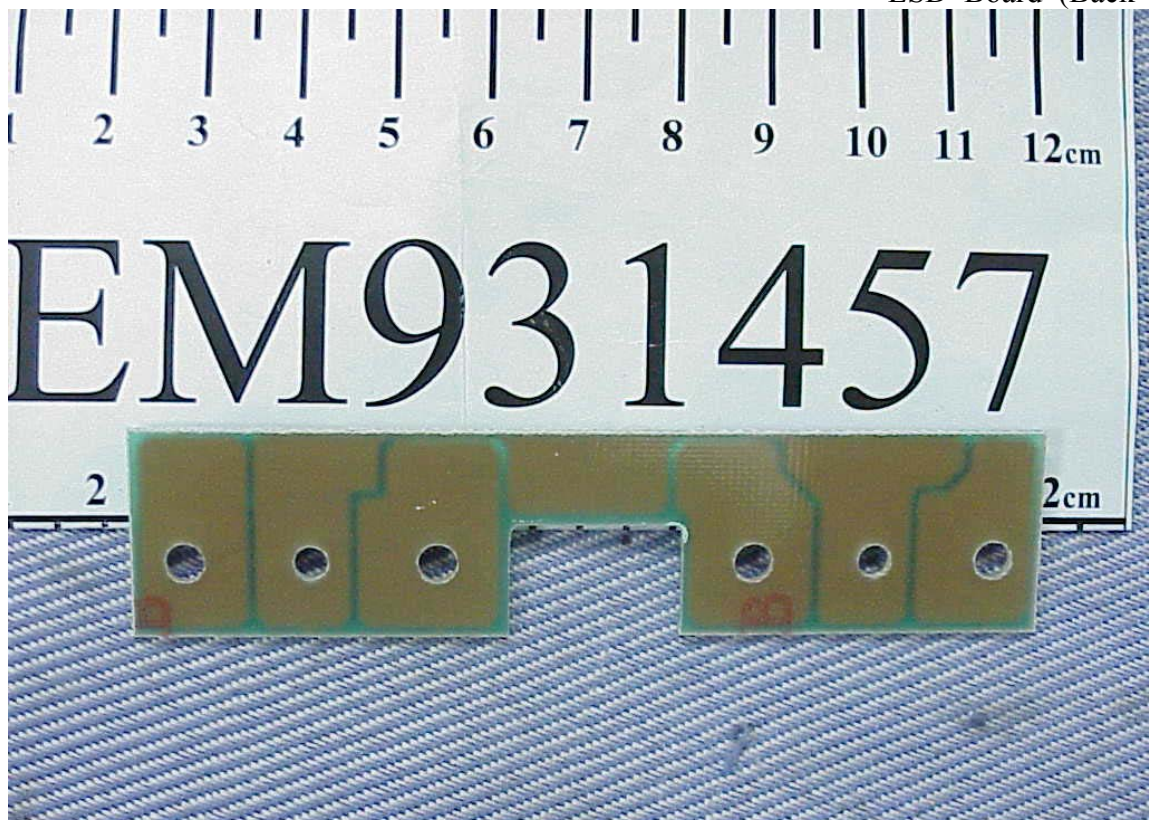


Figure 27
AC Power Board (Front Side)

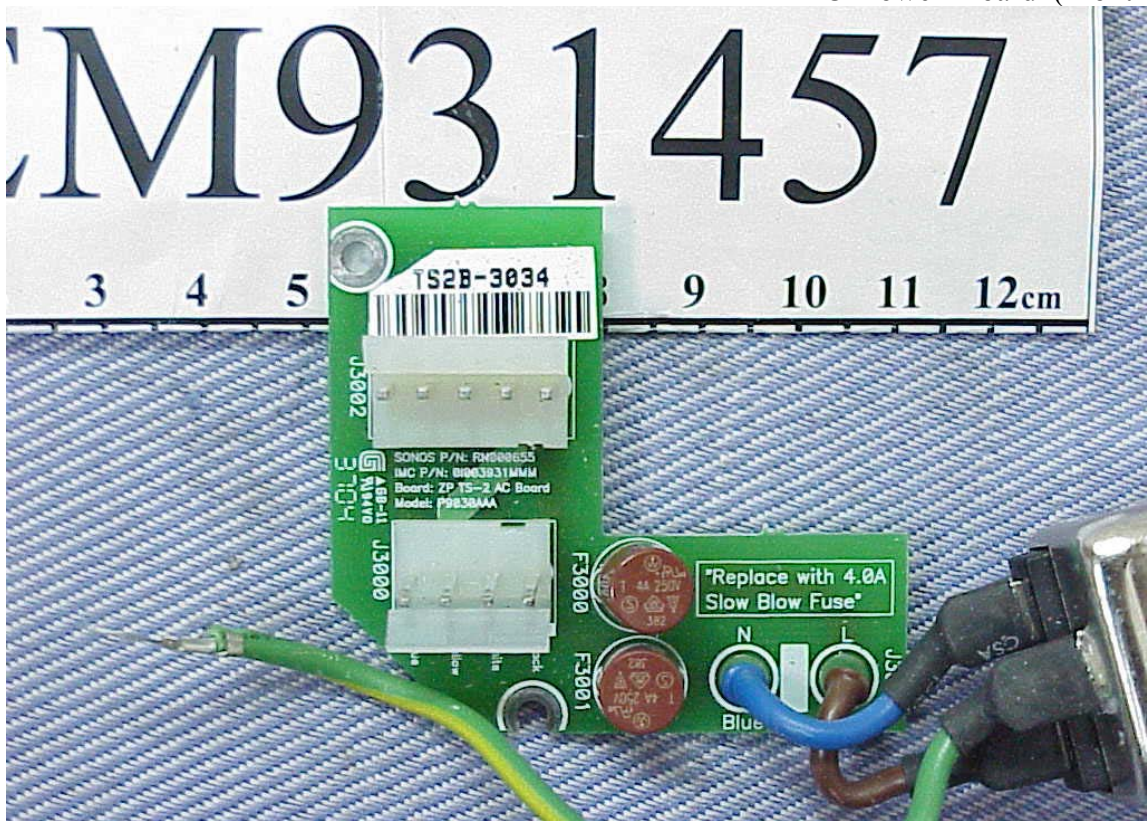


Figure 28
AC Power Board (Back Side)

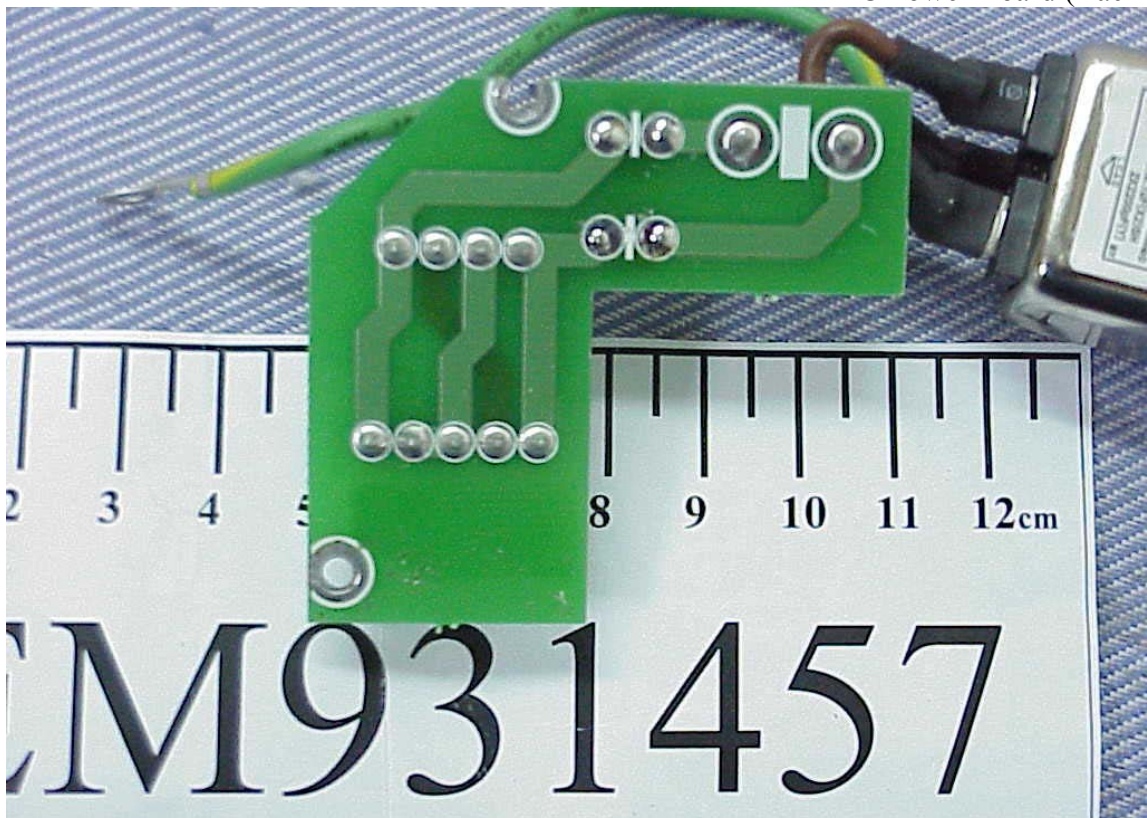


Figure 29
EMI Filter View

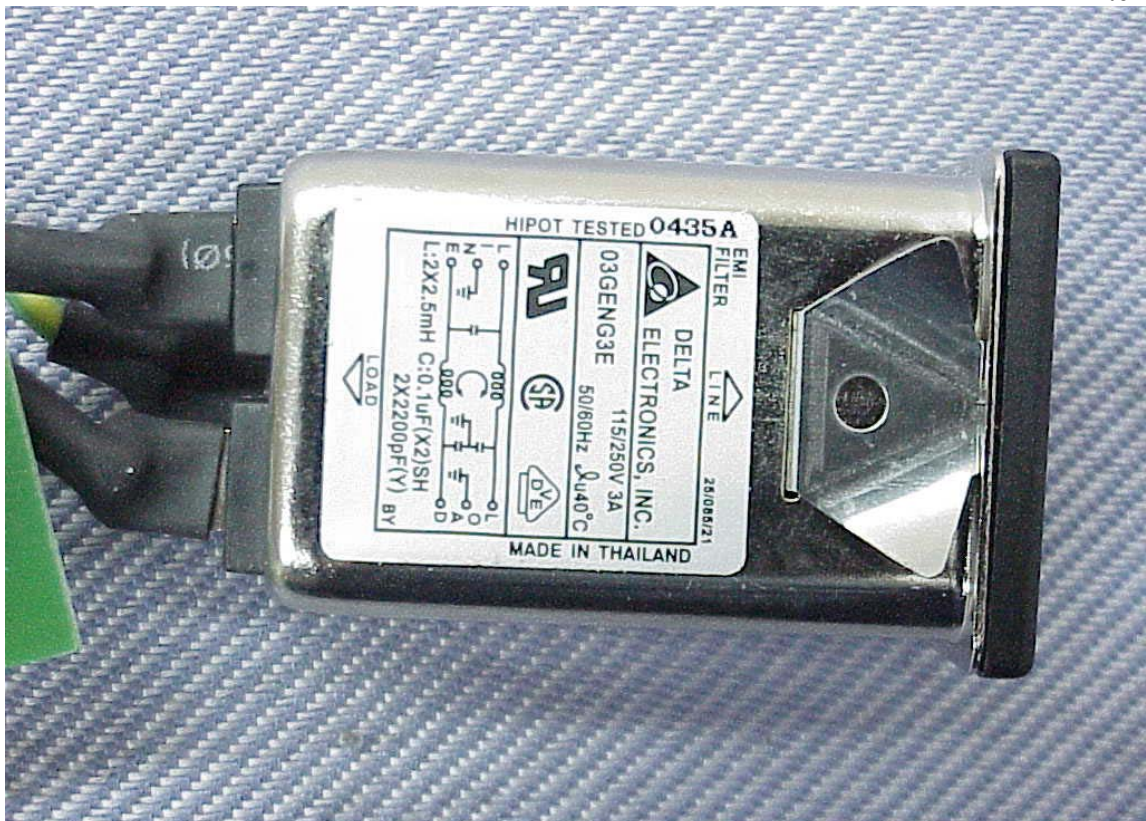


Figure 30
AC Power Cord & RJ45 LAN Cable

