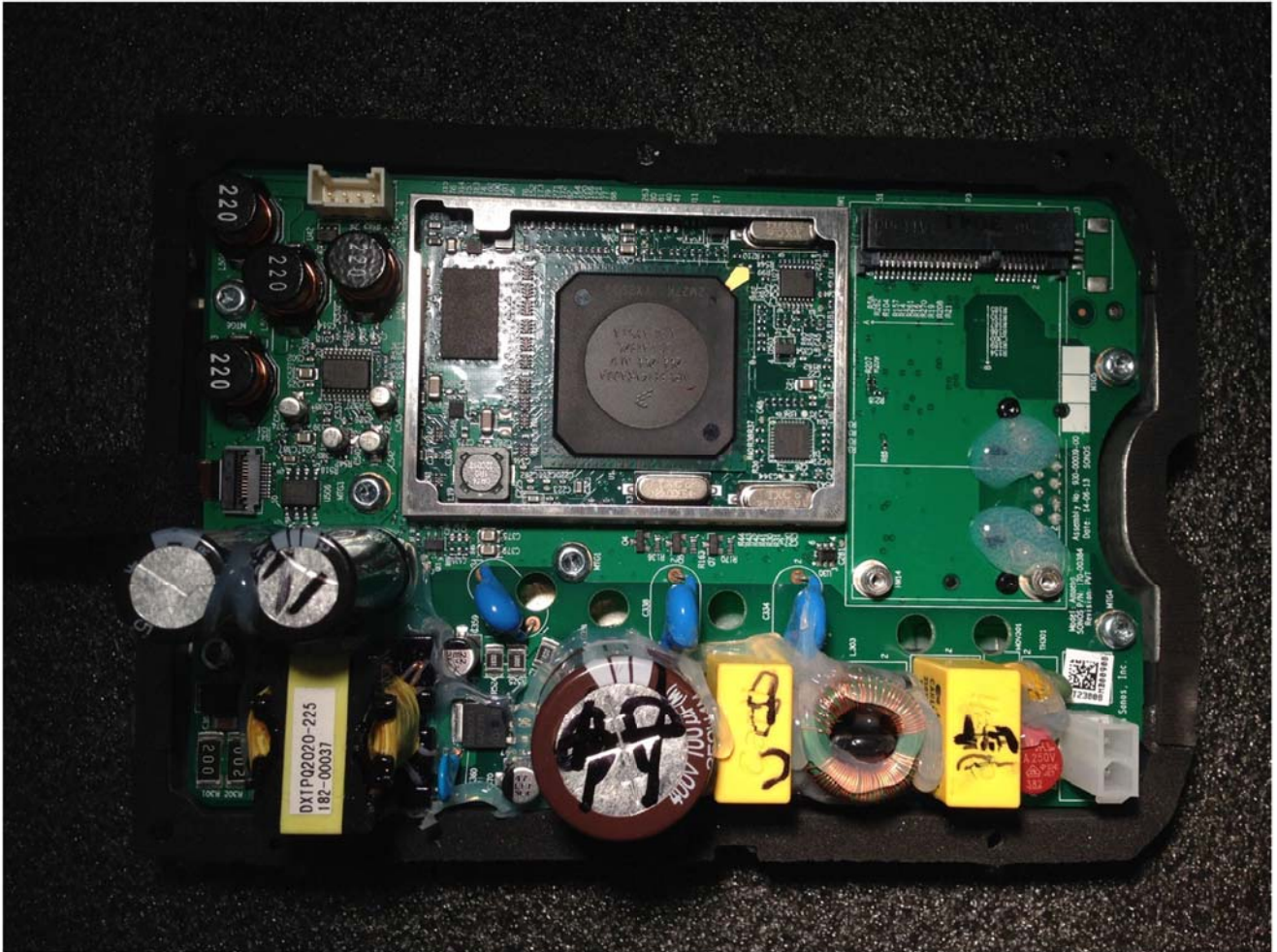


Sonos PLAY:1



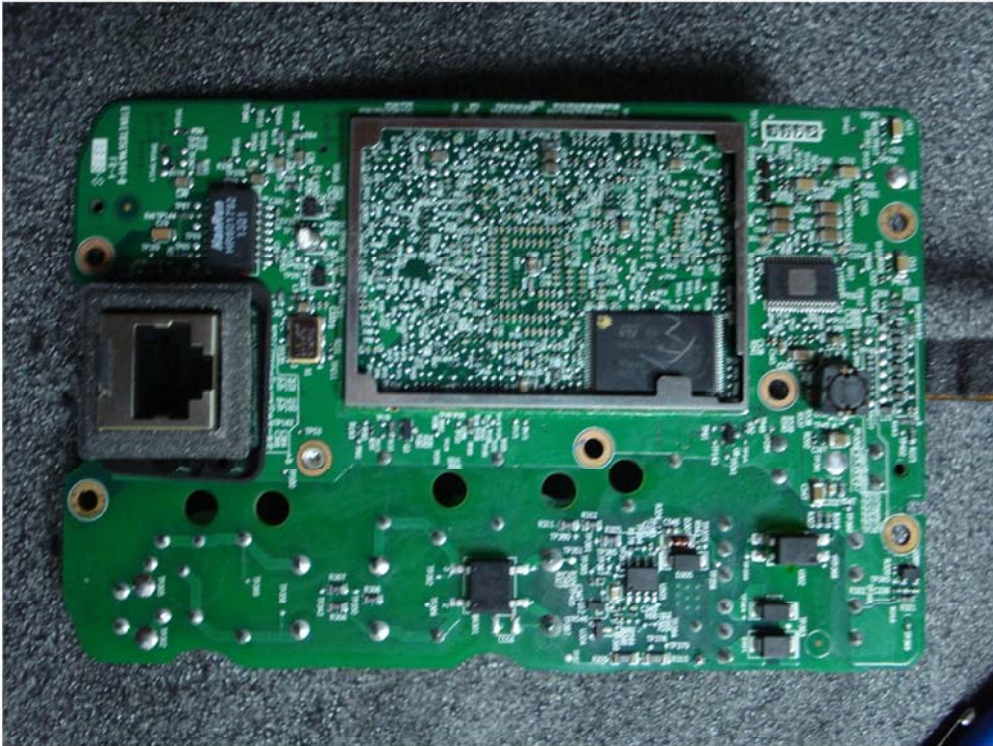
Main PCB top side with radio card

Sonos PLAY:1



Main PCB top side without radio card

Sonos PLAY:1



Main PCB bottom side without shield

Sonos PLAY:1



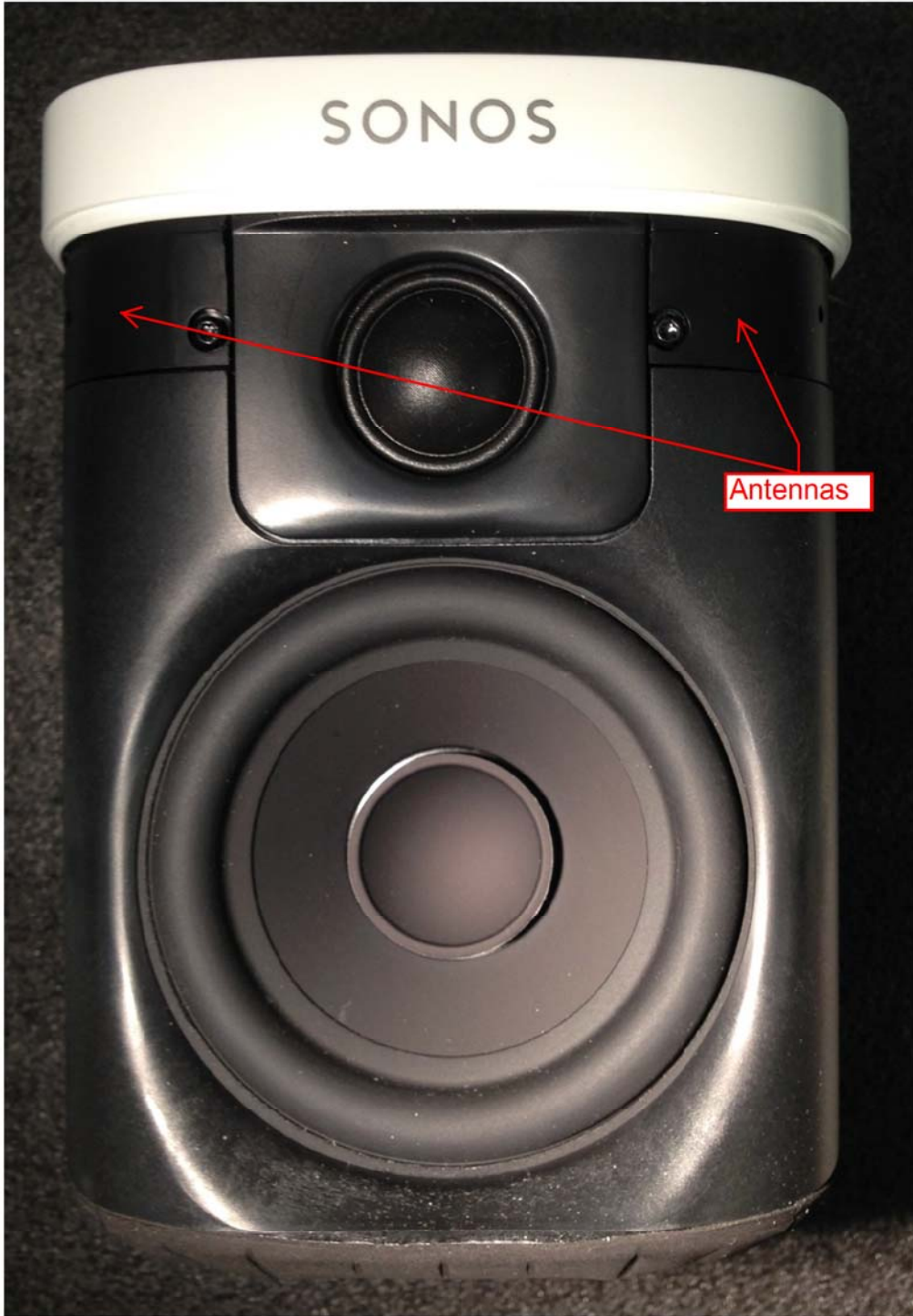
Radio card top side

Sonos PLAY:1



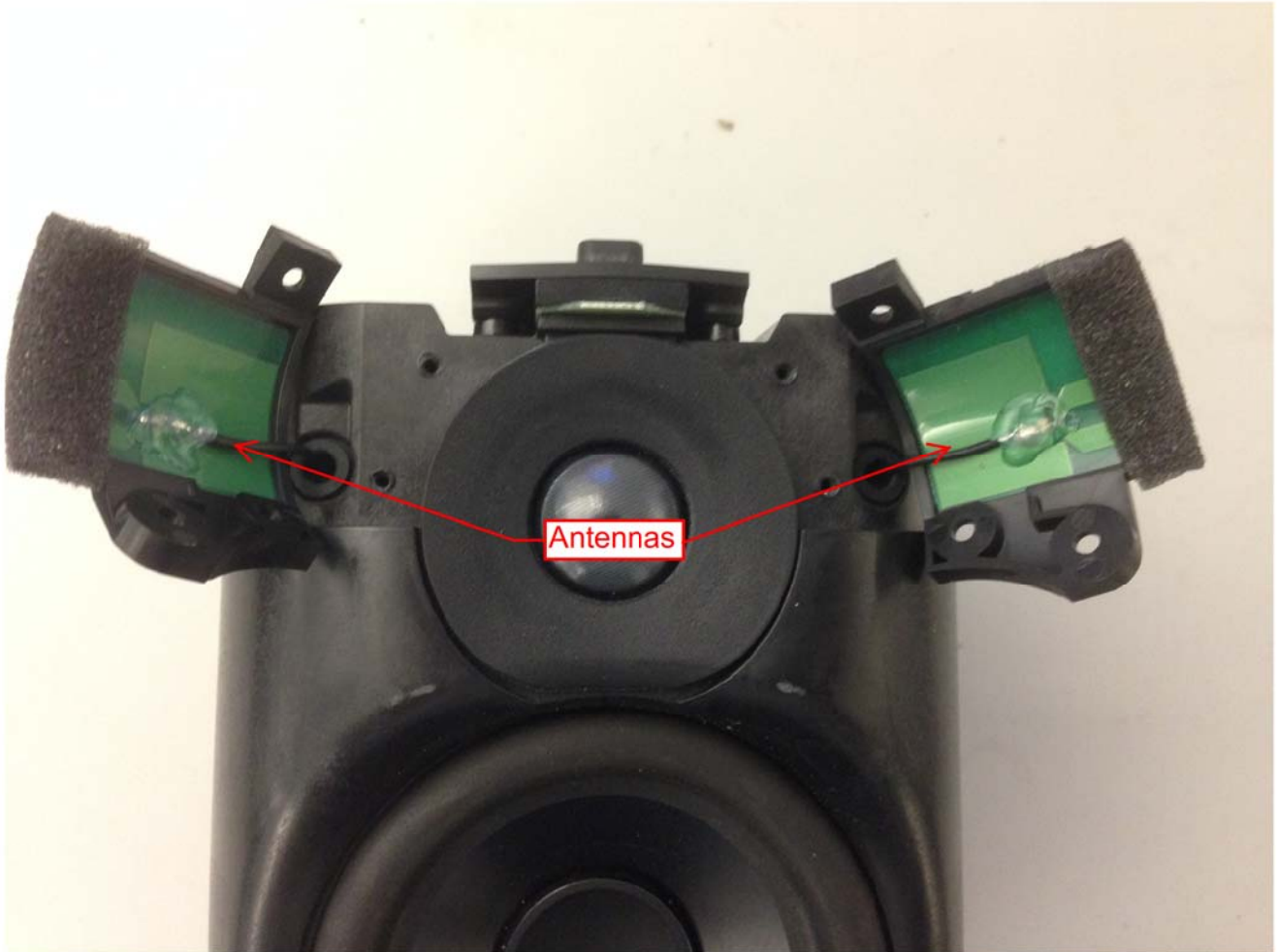
Radio card bottom side

Sonos PLAY:1



PLAY:1 Antennas

Sonos PLAY:1



PLAY:1 Antennas