

PIC16F688 MCP

RF MODEM  
20120206

IN  
S  
T  
E  
Φ  
N

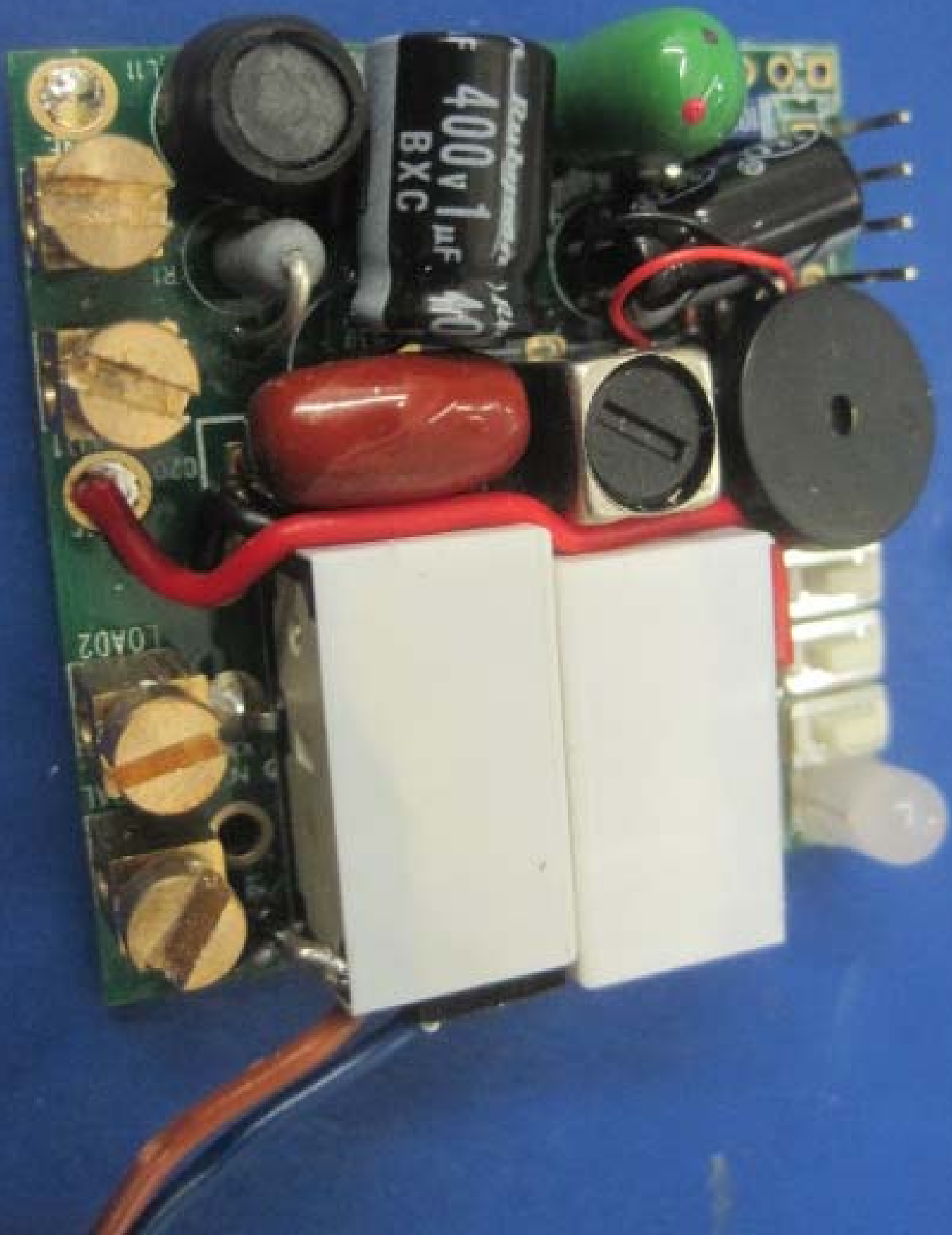
J1

J2

J3

J4

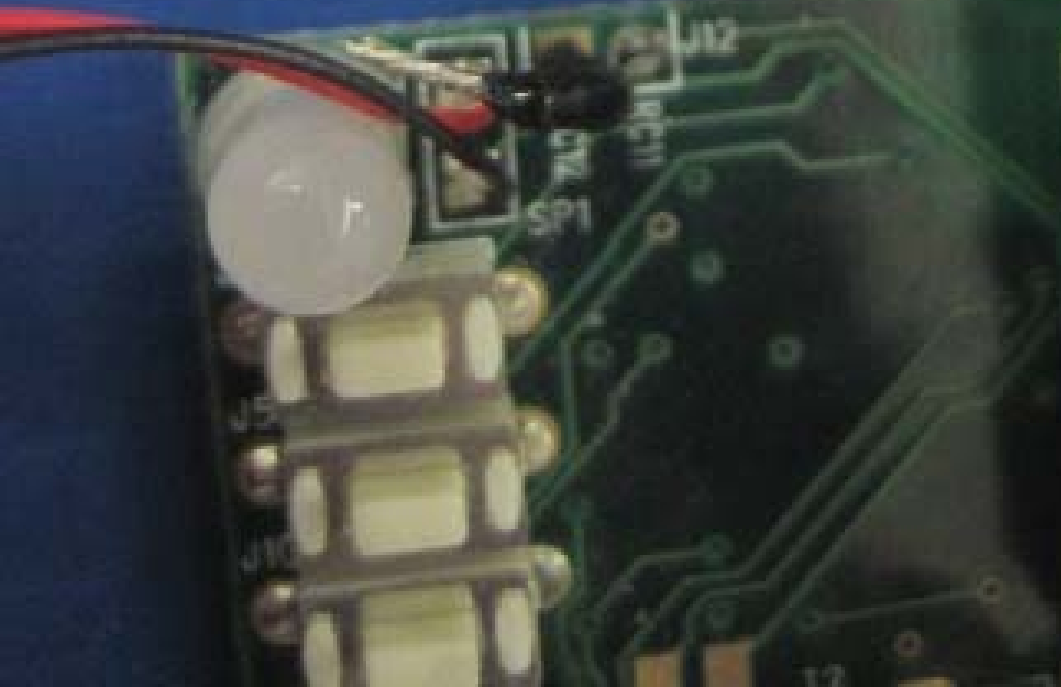
J5





GOODSKY      Φ Coil: 24VDC ∴ ∴  
⌋ 8A/250VAC ~      ○ □      AZ  
⌋ 8A/30VDC ∴ ∴  
JE-124DM      C RALUS<sup>®</sup>      DVE

GOODSKY      Φ Coil: 24VDC ∴ ∴  
⌋ 8A/250VAC ~      ○ □      AZ  
⌋ 8A/30VDC ∴ ∴



GOODSKY  
8A/250VAC ~ 8A/30VDC  
JE-1240M  
PULS  
CAL24VDC  
A2

GOODSKY  
8A/250VAC ~ 8A/30VDC  
JE-1240M  
PULS  
CAL24VDC  
A2



GOODSKY

Φ Coil: 24VDC

⊕ 8A/250VAC ~  
⊖ 8A/30VDC ---



AZ

JE-124DM

c **RAI**<sup>®</sup>  
US

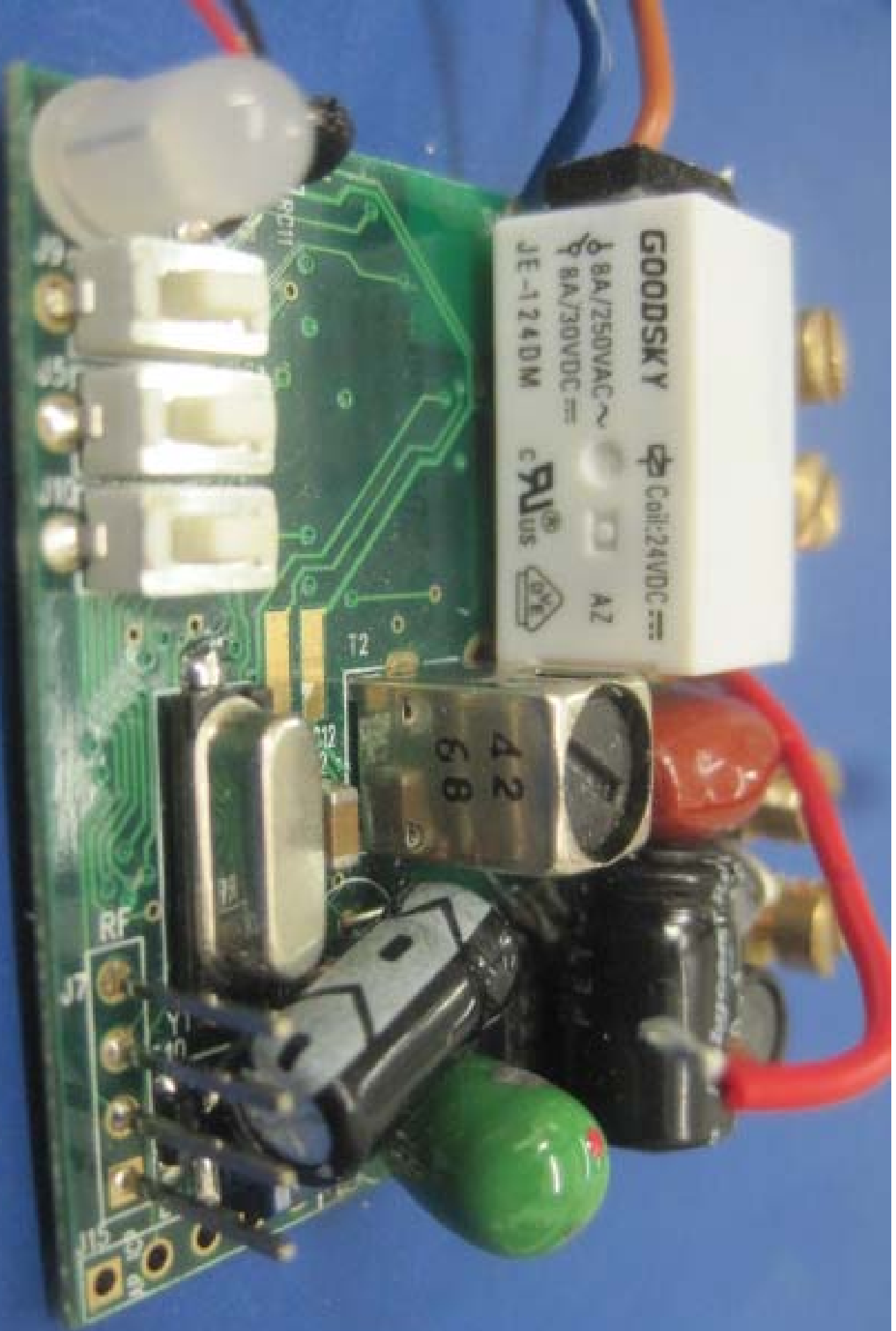


T2

60

42

FI



GOODSKY  
Coil: 24VDC  
8A/250VAC ~  
8A/30VDC =  
JE-124DM  
RUUS  
AZ

42  
68

RF

T1

T2

T3

T4

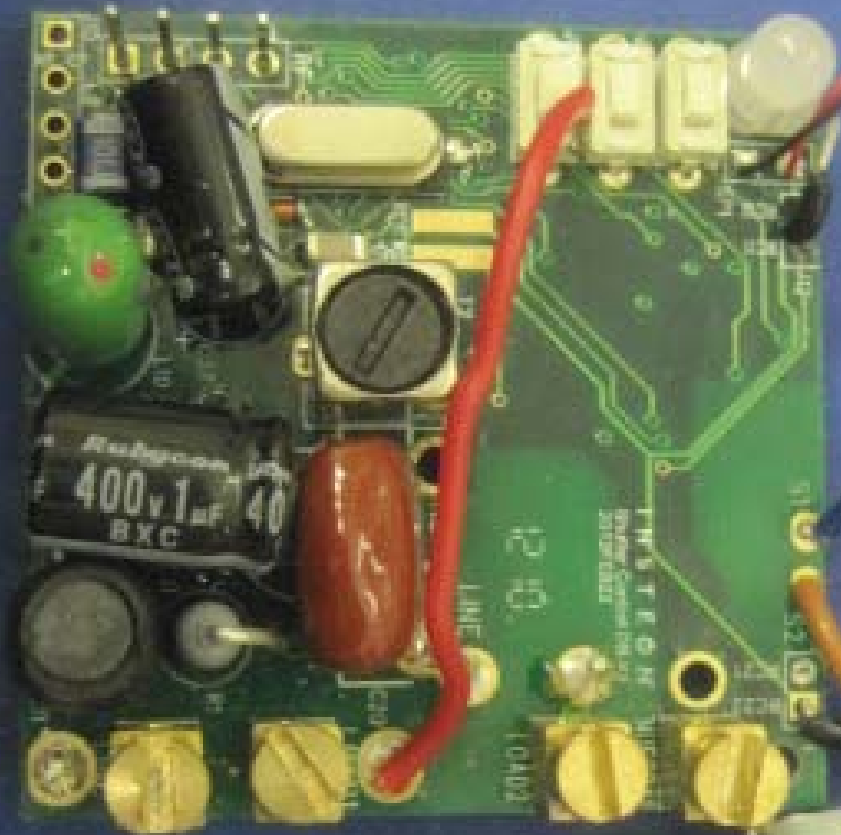
42

55

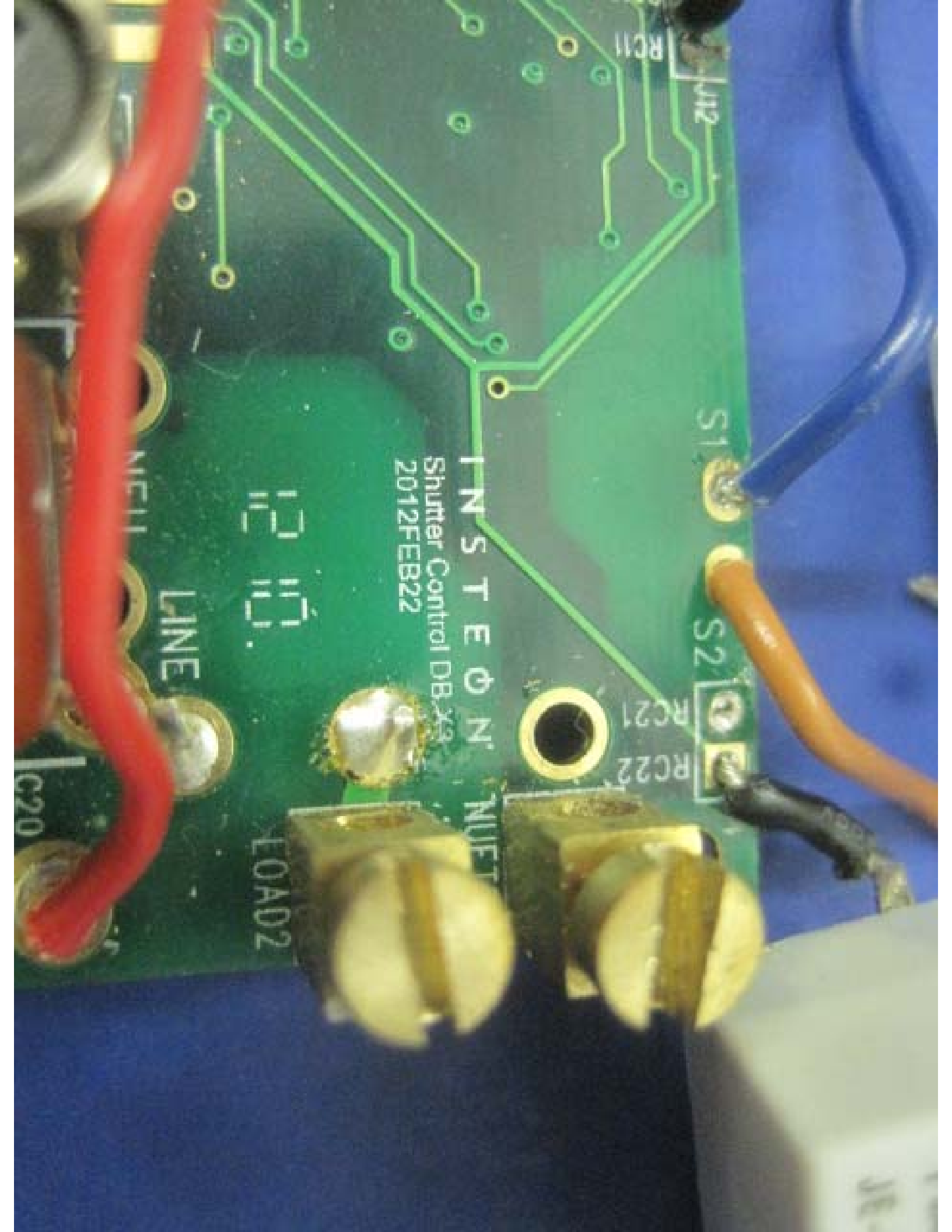
100

15

20







RC11

442

S1

S2

RC21

RC22

INSTEN

Shutter Control DB  
2012FEB22

NUFT

12 11

LINE

X0A0D2

MC11

C20



S1

S2

RC21

RC22

RC21

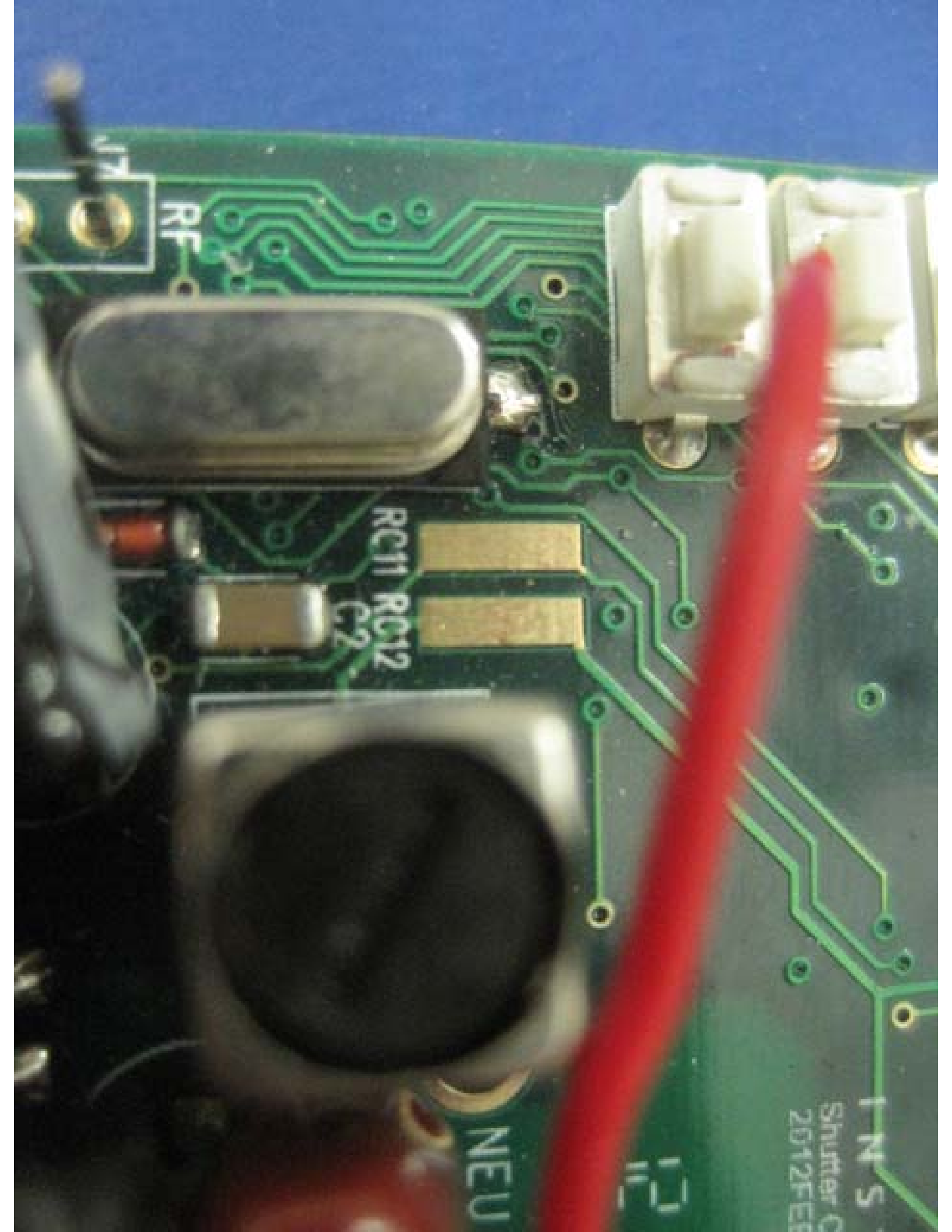
RC22

INSTON  
Shutter Control DB X3  
2012FEB22

NEUTRAL

10 10  
10 10

COND



RF

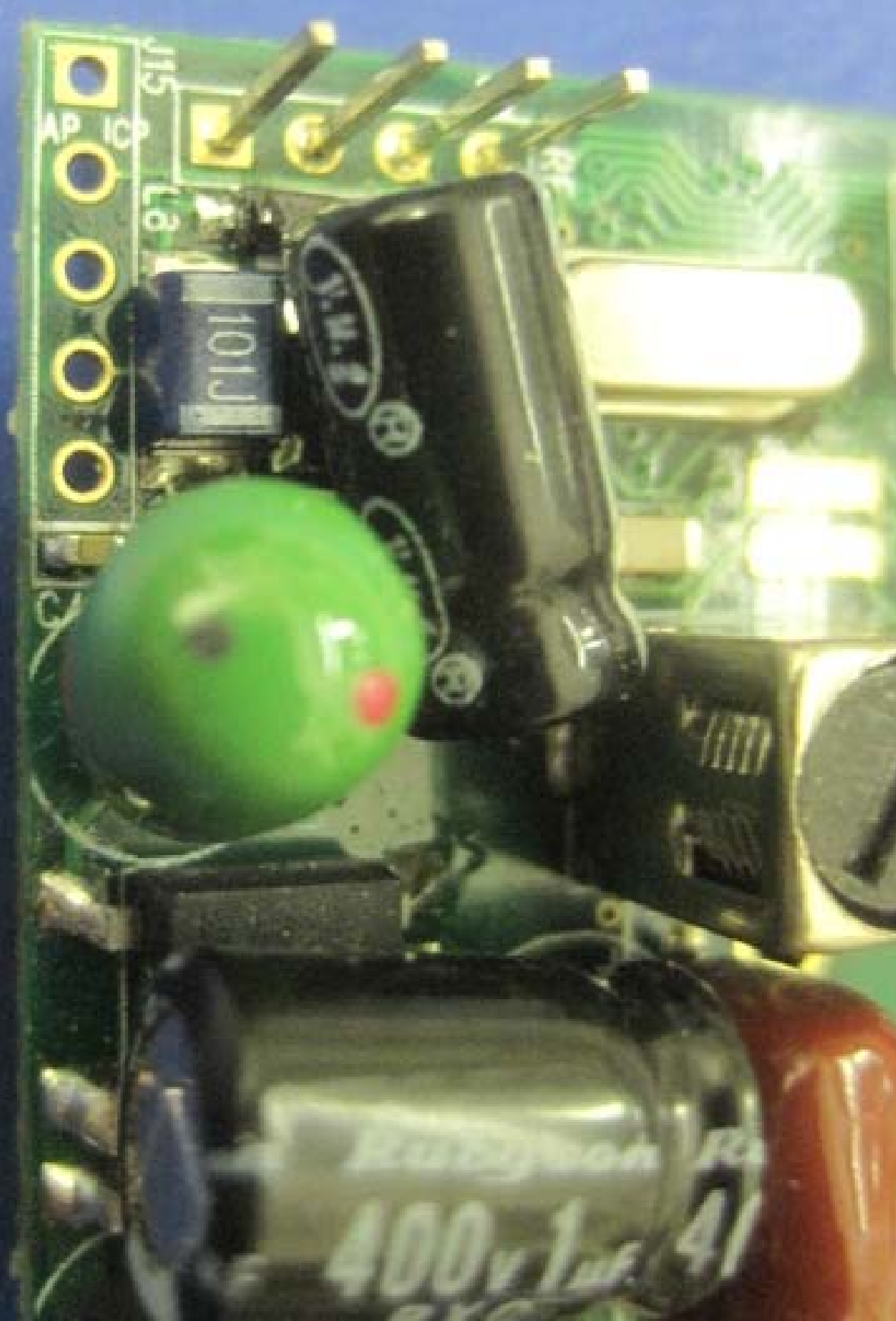
RC11 RC12

C2

1N5

Shutter C  
2012FE

NEU





INST E Φ N  
Shutter Control DB  
2012FEB22

12 101

LINE

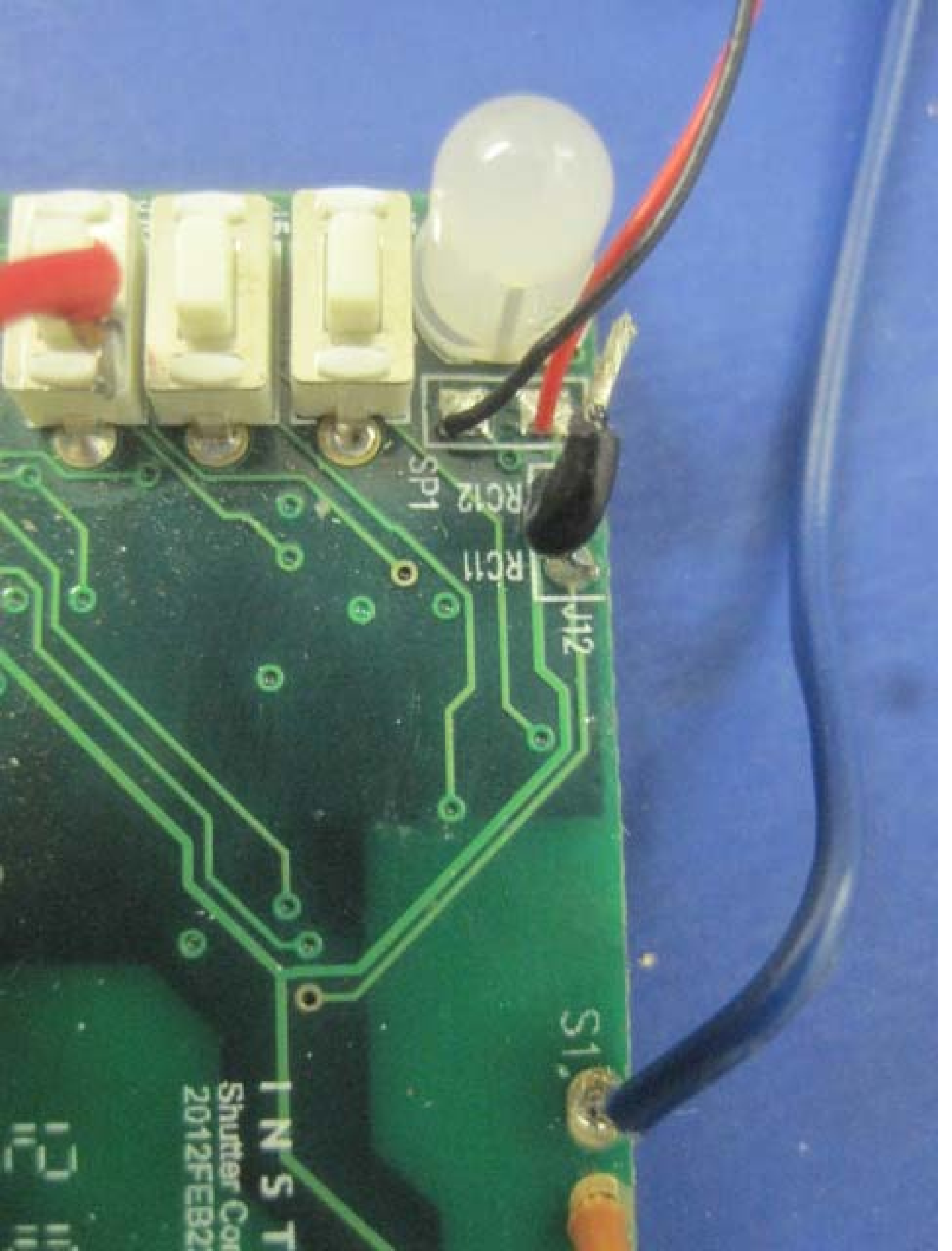
LOAD2

C20  
LOAD1









SP1

RC12

RC11

U12

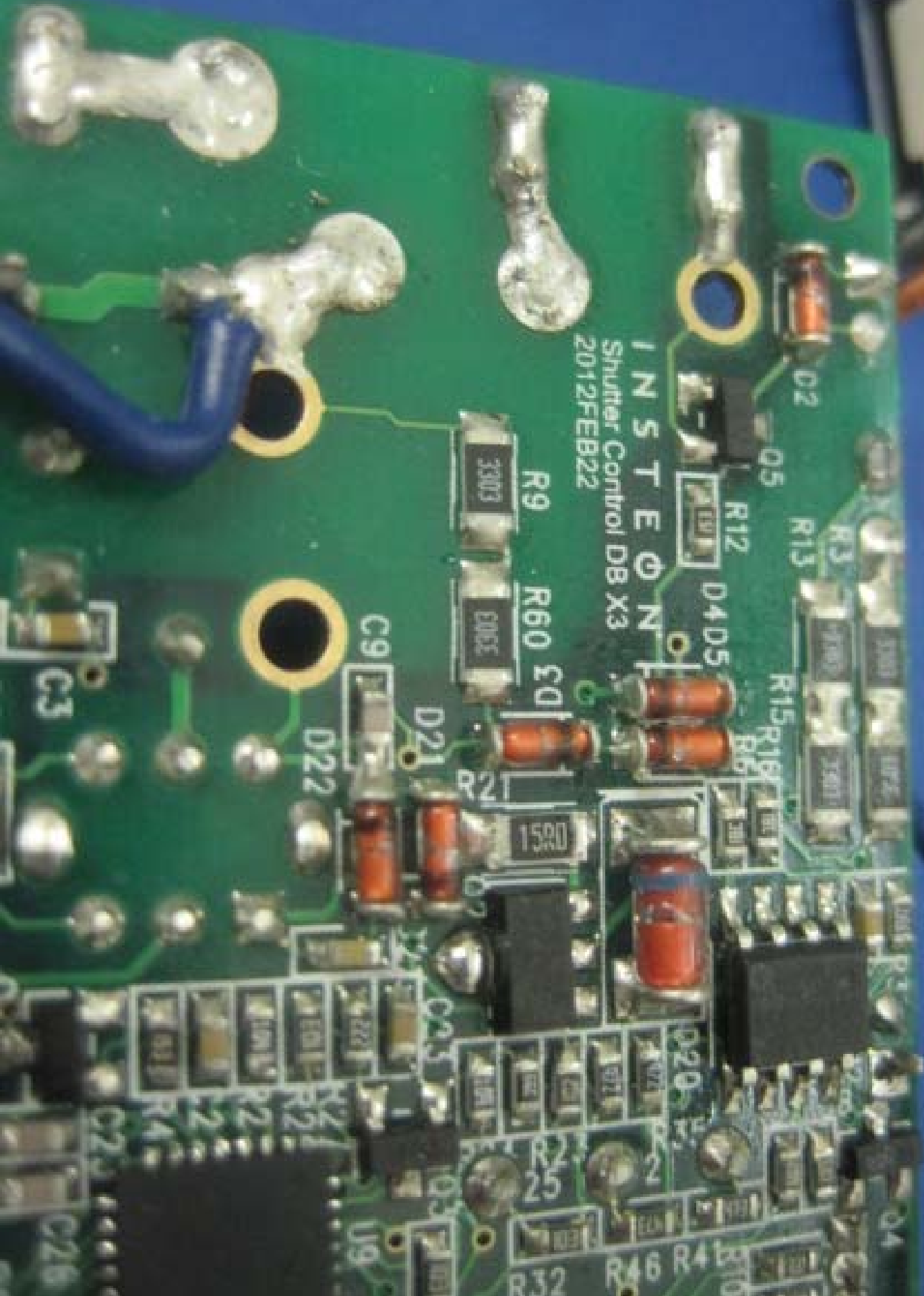
S1

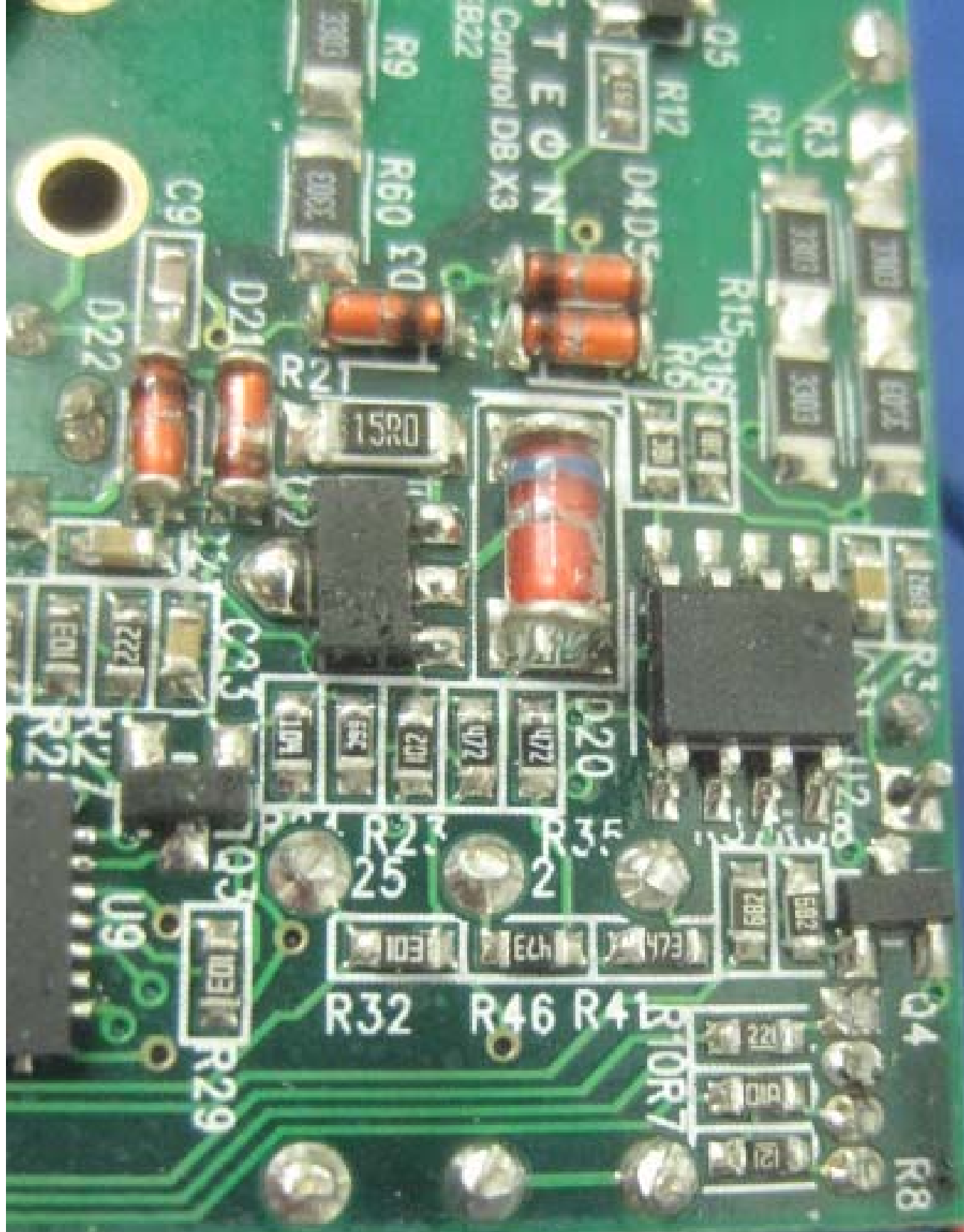
INST  
Shutter Control  
2012FEB21

12 11



INSTEN  
Shutter Control DB X3  
2012FEB22





TEON  
Control DB X3

R32 R46 R41

U9  
R29

Q4  
R8

R10R7

D20

R25

R2

C23

R21

R22

R23

R24

R25

R26

R27

R28

R29

R30

R31

R32

R33

R34

C9

D21

R21

R22

R23

R24

R25

R26

R27

R28

R29

R30

R31

R32

R33

R34

R35

R36

D22

R21

R22

R23

R24

R25

R26

R27

R28

R29

R30

R31

R32

R33

R34

R35

R36

R37

R21

R22

R23

R24

R25

R26

R27

R28

R29

R30

R31

R32

R33

R34

R35

R36

R37

R38

R21

R22

R23

R24

R25

R26

R27

R28

R29

R30

R31

R32

R33

R34

R35

R36

R37

R38

R21

R22

R23

R24

R25

R26

R27

R28

R29

R30

R31

R32

R33

R34

R35

R36

R37

R38

R21

R22

R23

R24

R25

R26

R27

R28

R29

R30

R31

R32

R33

R34

R35

R36

R37

R38

R21

R22

R23

R24

R25

R26

R27

R28

R29

R30

R31

R32

R33

R34

R35

R36

R37

R38

R21

R22

R23

R24

R25

R26

R27

R28

R29

R30

R31

R32

R33

R34

R35

R36

R37

R38

R21

R22

R23

R24

R25

R26

R27

R28

R29

R30

R31

R32

R33

R34

R35

R36

R37

R38

R21

R22

R23

R24

R25

R26

R27

R28

R29

R30

R31

R32

R33

R34

R35

R36

R37

R38

R21

R22

R23

R24

R25

R26

R27

R28

R29

R30

R31

R32

R33

R34

R35

R36

R37

R38

R21

R22

R23

R24

R25

R26

R27

R28

R29

R30

R31

R32

R33

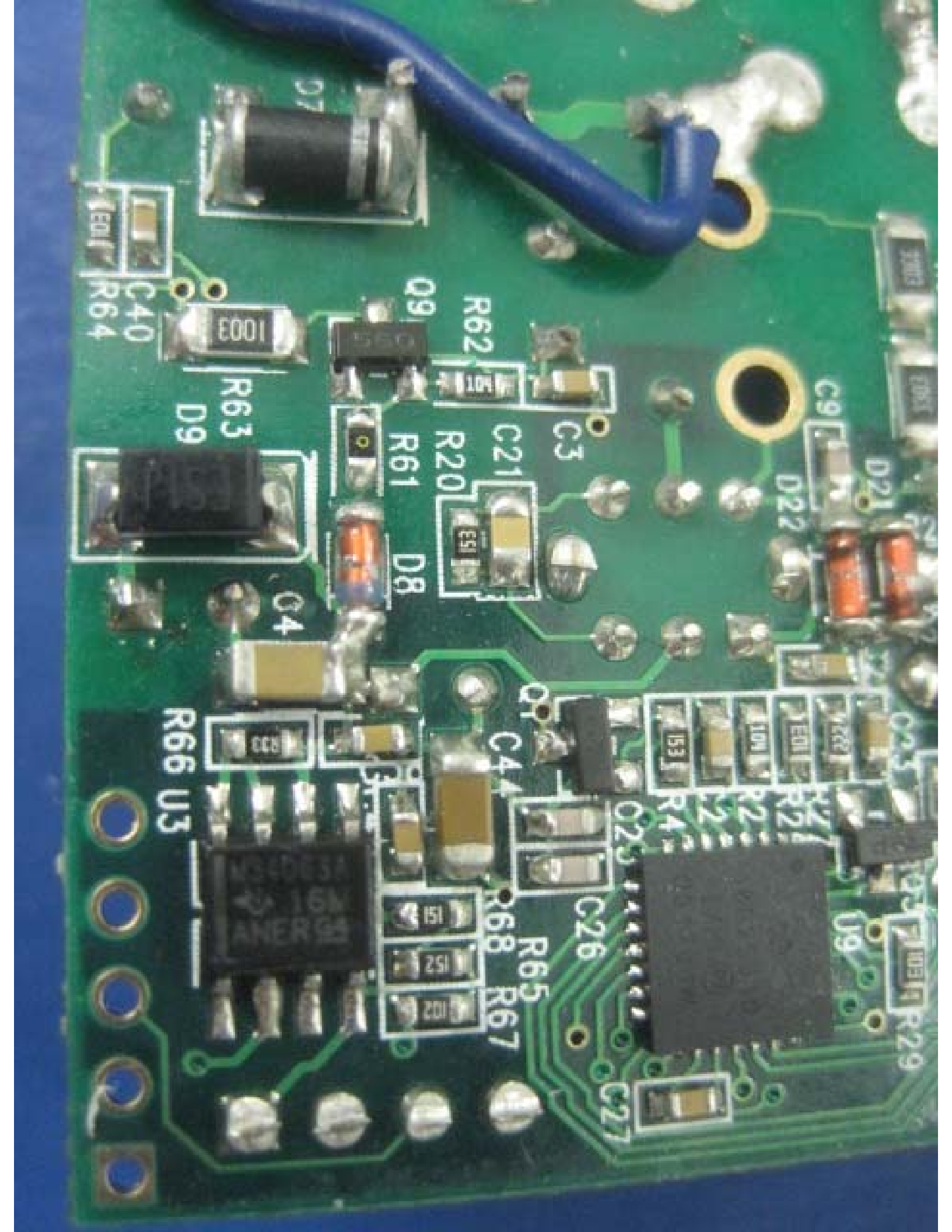
R34

R35

R36

R37

R38



Q7  
C40  
R64

1000

R63  
D9

Q9  
R62

C21  
R20  
E51

R61  
D8

C4

R66  
U3

CC8

ANALOG

151  
152  
201

R68  
R65  
R67

C26

Q25

153  
101  
E01  
E02

R4  
R2  
R21  
R22  
R23  
R24  
R25  
R26  
R27  
R28  
R29

C9  
D21  
D22

D21

D22

Q23

Q24

Q25

Q26

Q27

Q28

Q29

Q30

Q31

Q32

Q33

Q34

Q35

Q36

Q37

Q38

Q39

Q40

Q41

Q42

Q43

Q44

Q45

Q46

Q47

Q48

Q49

Q50

Q51

Q52

Q53

Q54

Q55

Q56

Q57

Q58

Q59

Q60

Q61

Q62

Q63

Q64

Q65

Q66

Q67

Q68

Q69

Q70

Q71

Q72

Q73

Q74

Q75

Q76

Q77

Q78

Q79

Q80

Q81

Q82

Q83

Q84

Q85

Q86

Q87

Q88

Q89

Q90

Q91

Q92

Q93

Q94

Q95

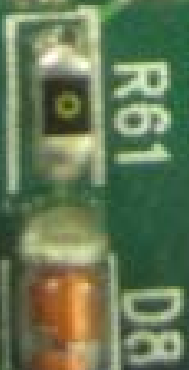
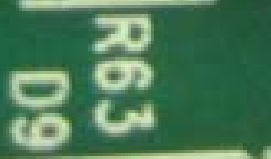
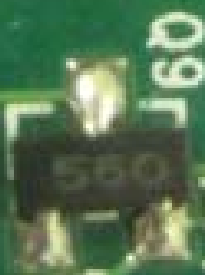
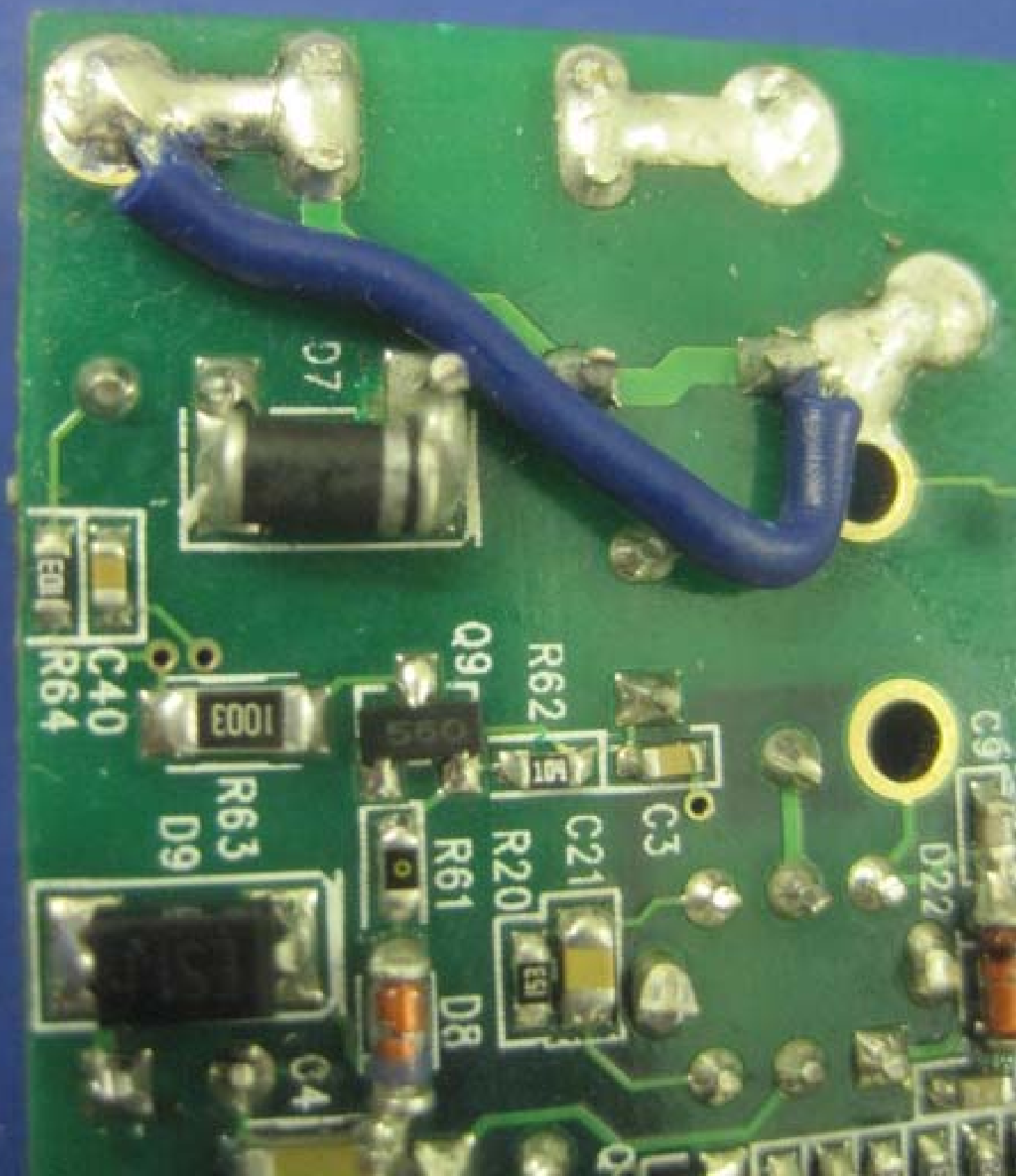
Q96

Q97

Q98

Q99

Q100



INST E  $\Phi$  N  
Shutter Control DB X3  
2012FEBB22

02

Q5

R12

D4D5

R13

R3

R9

R60 EQ

R15

R16

R6

R2

15RD

C9

D21

D22

3303

605C

3303

3303

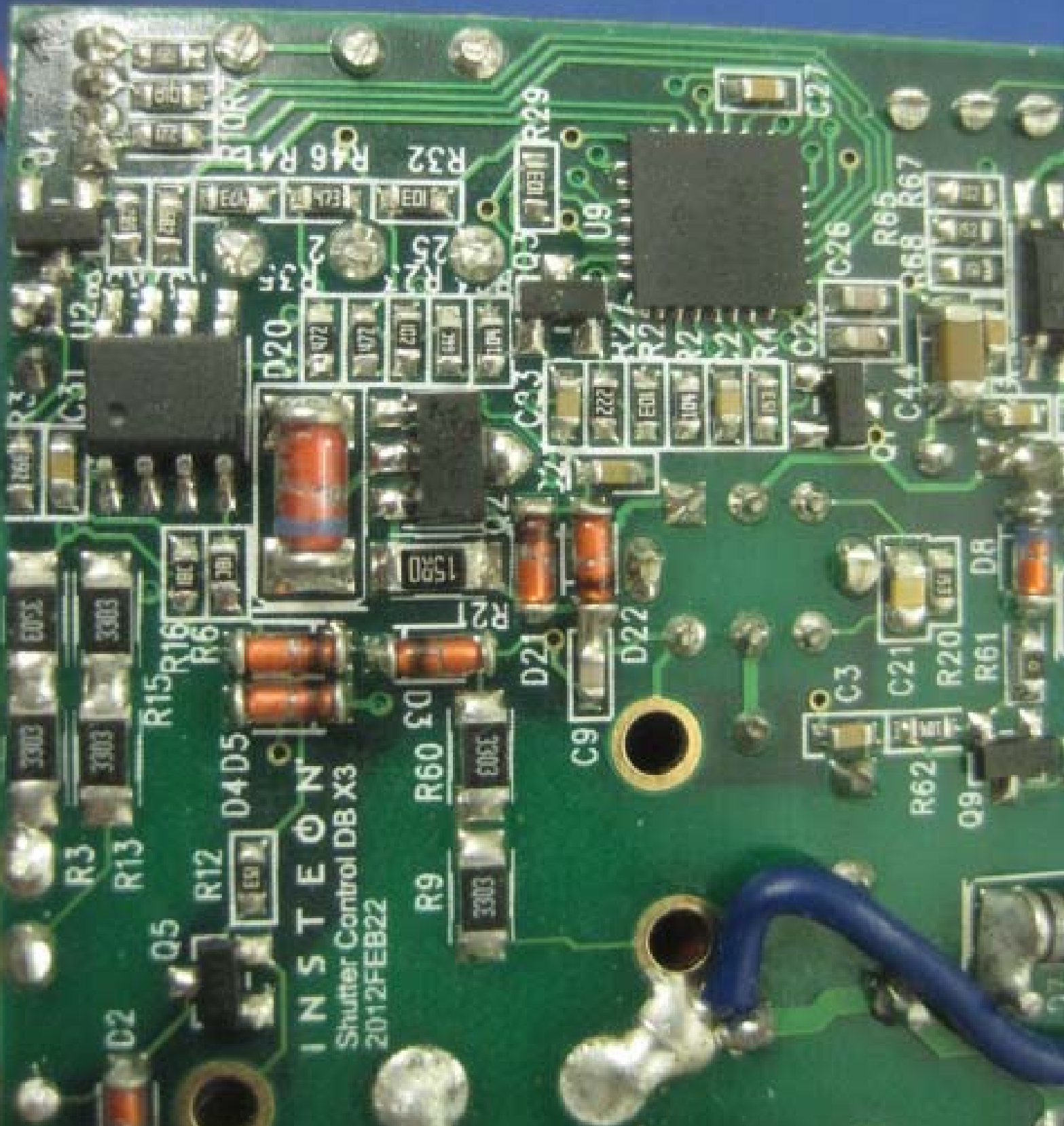
581

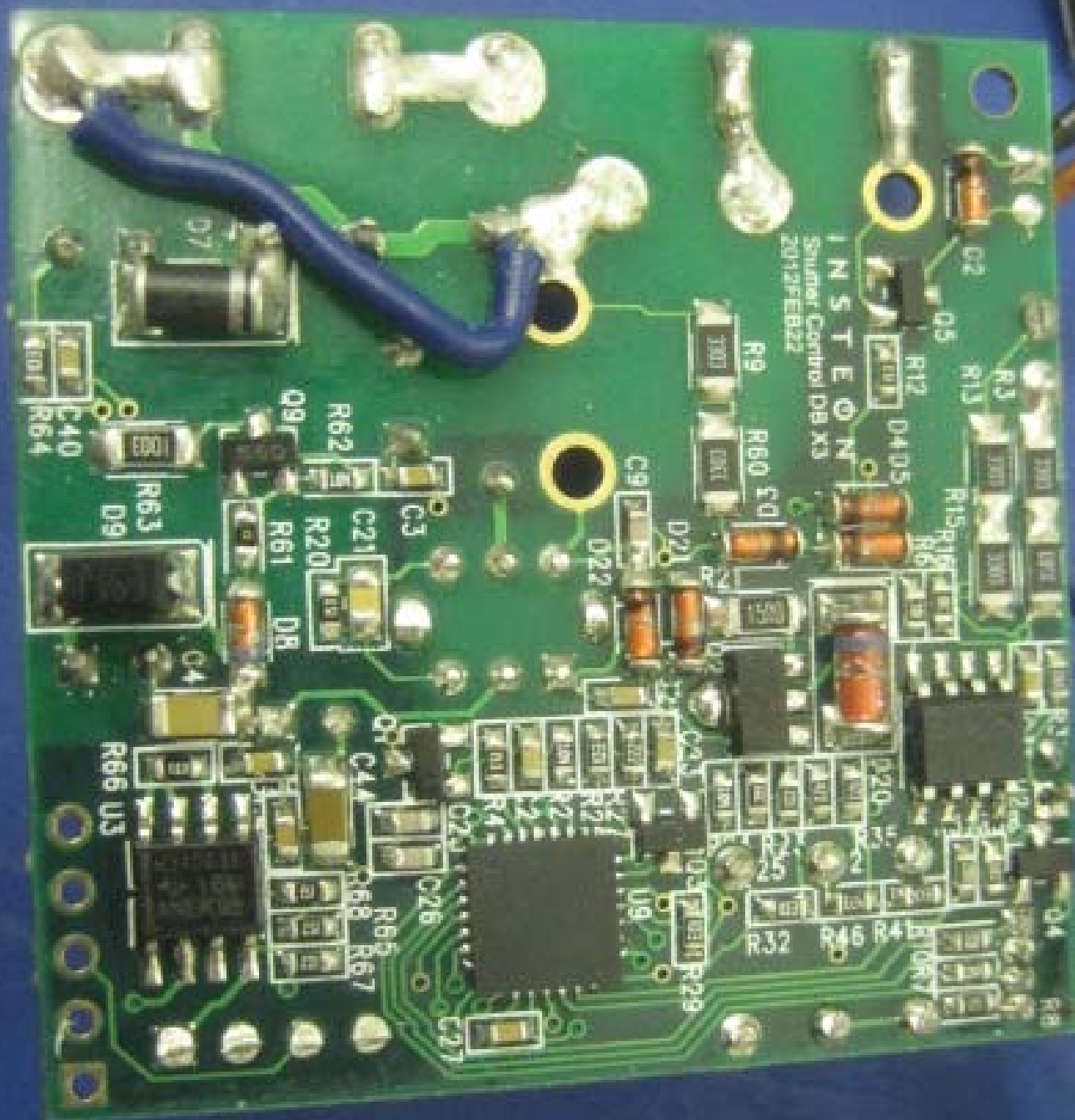






**I N S T E O N**  
Shutter Control DB X3  
2012FEB22





INST EON  
Summer Control DB X3  
2012 FEB 22

- R1, R2, R3, R4, R5, R6, R7, R8, R9, R10, R11, R12, R13, R14, R15, R16, R17, R18, R19, R20, R21, R22, R23, R24, R25, R26, R27, R28, R29, R30, R31, R32
- C1, C2, C3, C4, C5, C6, C7, C8, C9
- U1, U2, U3
- D1, D2, D3, D4, D5, D6, D7, D8, D9, D10, D11, D12, D13, D14, D15, D16, D17, D18, D19, D20, D21, D22
- R60, R61, R62, R63, R64, R65, R66, R67, R68
- C20, C21, C22, C23, C24, C25, C26, C27
- Q1, Q2, Q3, Q4, Q5, Q6, Q7, Q8, Q9
- U9, U10, U11, U12, U13, U14, U15, U16, U17, U18, U19, U20, U21, U22, U23, U24, U25, U26, U27, U28, U29, U30, U31, U32, U33, U34, U35, U36, U37, U38, U39, U40, U41, U42, U43, U44, U45, U46, U47, U48, U49, U50, U51, U52, U53, U54, U55, U56, U57, U58, U59, U60, U61, U62, U63, U64, U65, U66, U67, U68, U69, U70, U71, U72, U73, U74, U75, U76, U77, U78, U79, U80, U81, U82, U83, U84, U85, U86, U87, U88, U89, U90, U91, U92, U93, U94, U95, U96, U97, U98, U99, U100