





INST EON
Commodity DB X3
2012FEB24

R64
C40

R65
D9

R66
US

R62
C21

R65
R67

R61
D8

R68
R69

D21
D22

R70
R71

R9
R60

D4
D5

R72
R73

C9
D3

R15
R16

R74
R75

R15
R16

R17
R18

R76
R77

R19
R20

R21
R22

R78
R79

R23
R24

R25
R26

R80
R81

R82
R83

INST E Φ N
Core Relay DB X3
2012FEB24



R9



R60



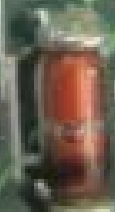
C9



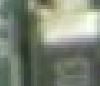
R13



D3



R15



R16



R6



D4 D5



D21

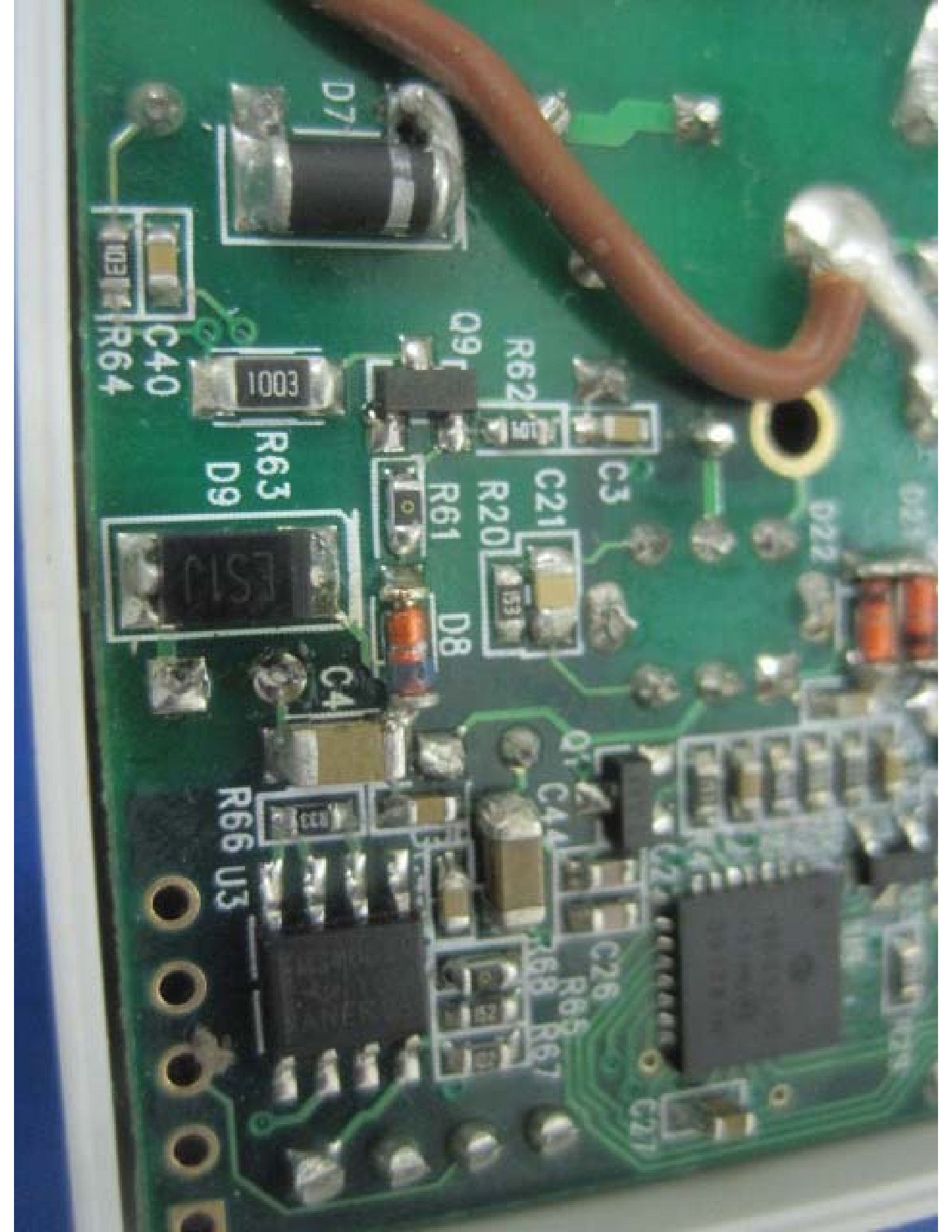


R21



D22





D7

C40

R64

8001

R63

D9

ES10

C4

R66 U3

Q91

R62

C3

C21

R20

D8

R61

Q1

C41

C26

R68

R69

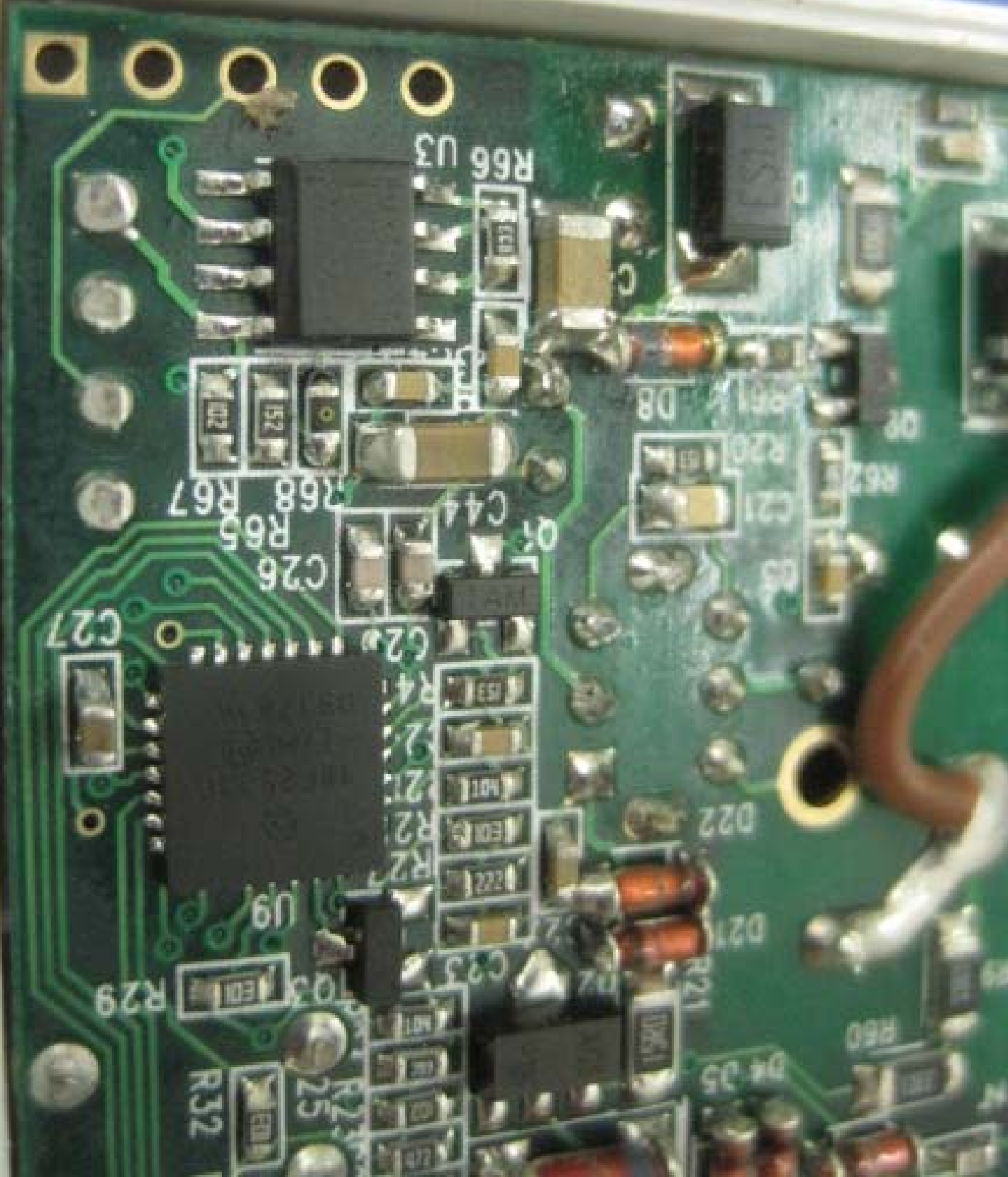
R67

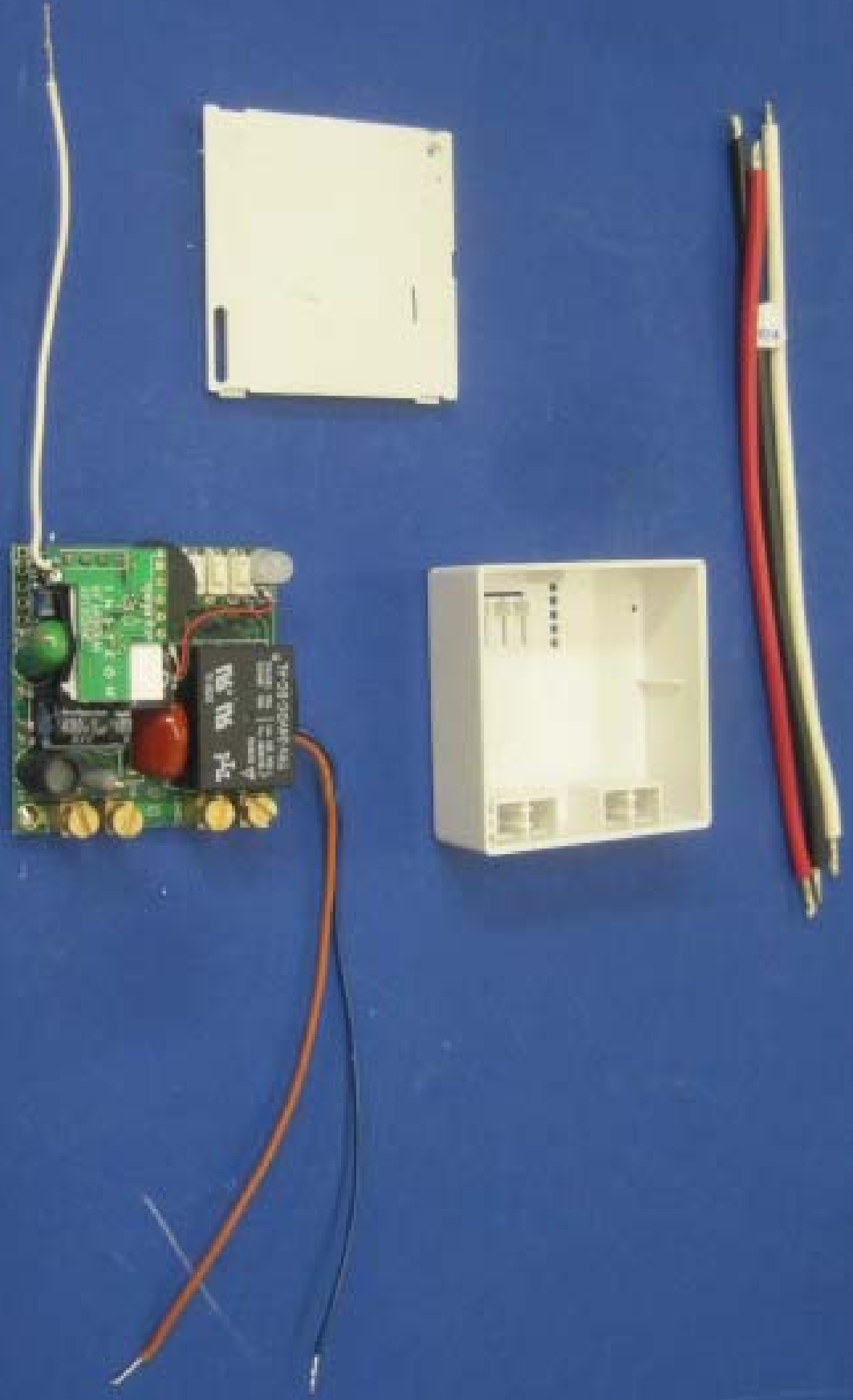
C27

D22

D21







Tri **RV** **RV**

TN 08D02

△ 50/60Hz

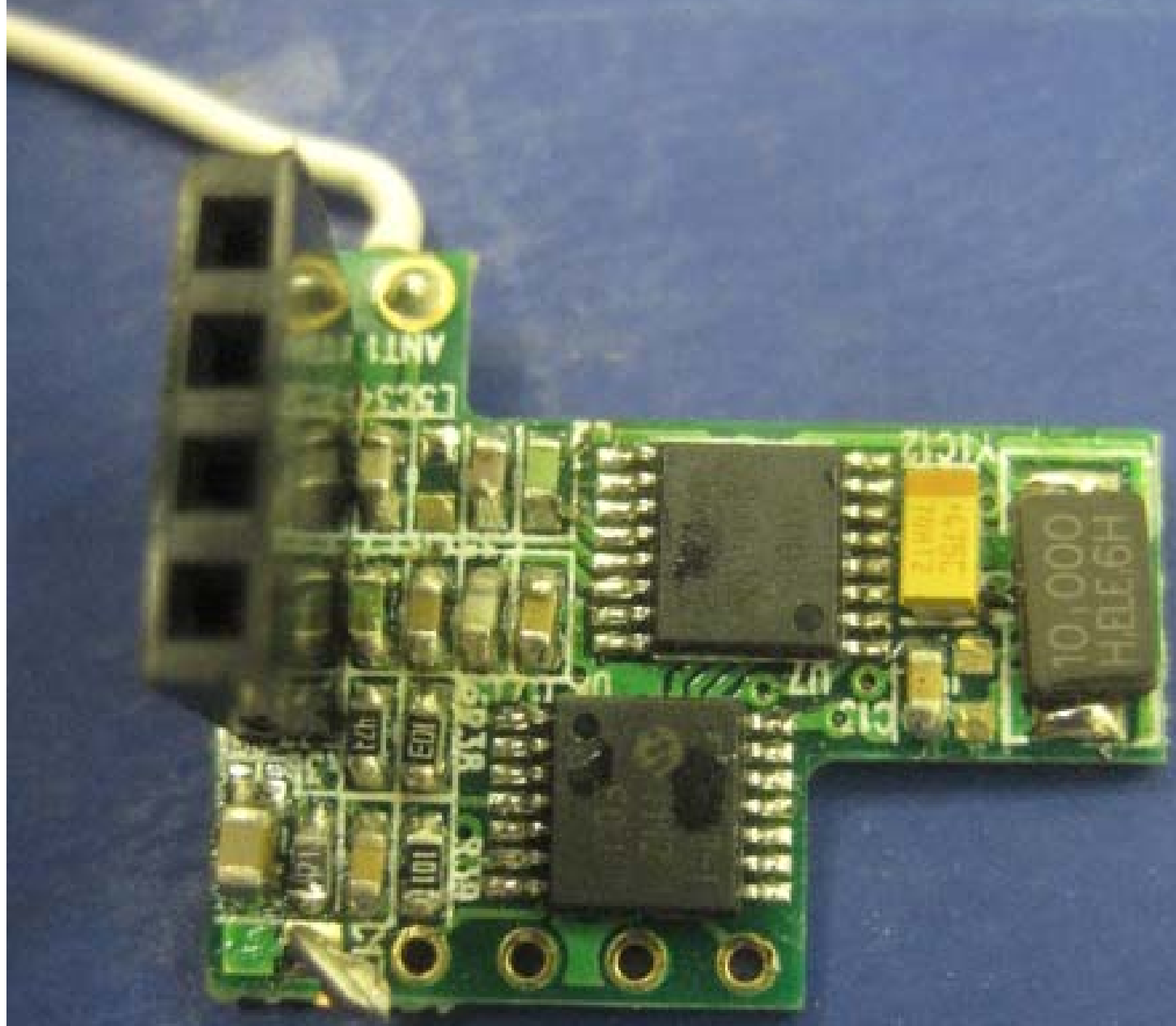
↑ 16A/250V ~ 16A 30VDC
↓ 16A/30V ≡ 16A 125VAC

TRV-24VDC-SC-AL R

25

DC REG 100A

IN 5T E Φ N
RE MOTOR



ANT1

555

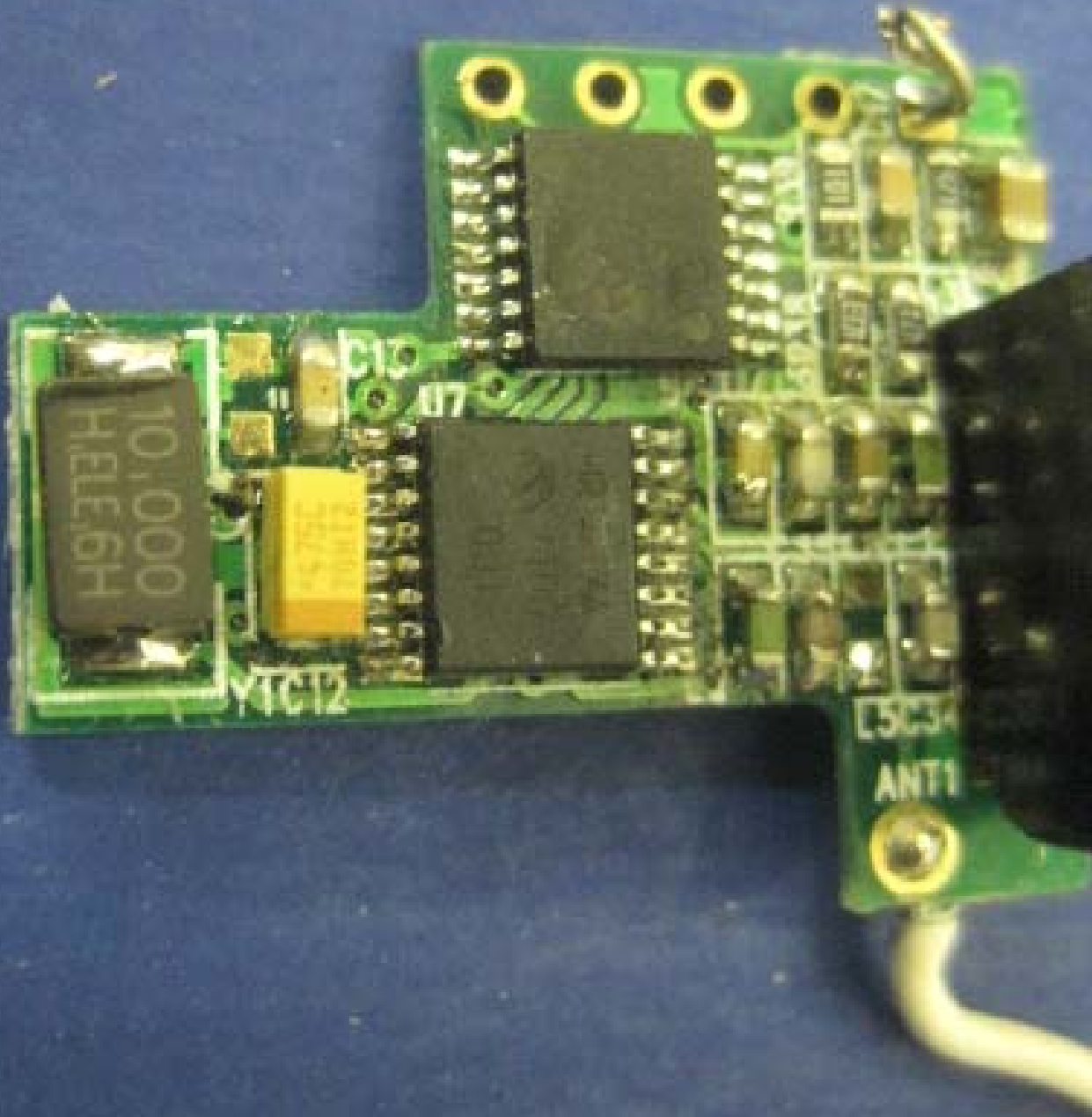
PIC 17C10

PIC 17C10

H9378H
10,000
H9378H

555

ANT1



10.000
HPLE6H

YTCT2

C10
C17

C5C34
ANT1

TRI **PA** **PA**
TN 08D02

△ 50/60Hz
↑ 16A/250V
↓ 16A/30V

~ | 16A 30VDC
| 16A 125VAC

TRV-24VDC-SC-AL R

25





AP
C
115

1013

Y.M.T.
10K

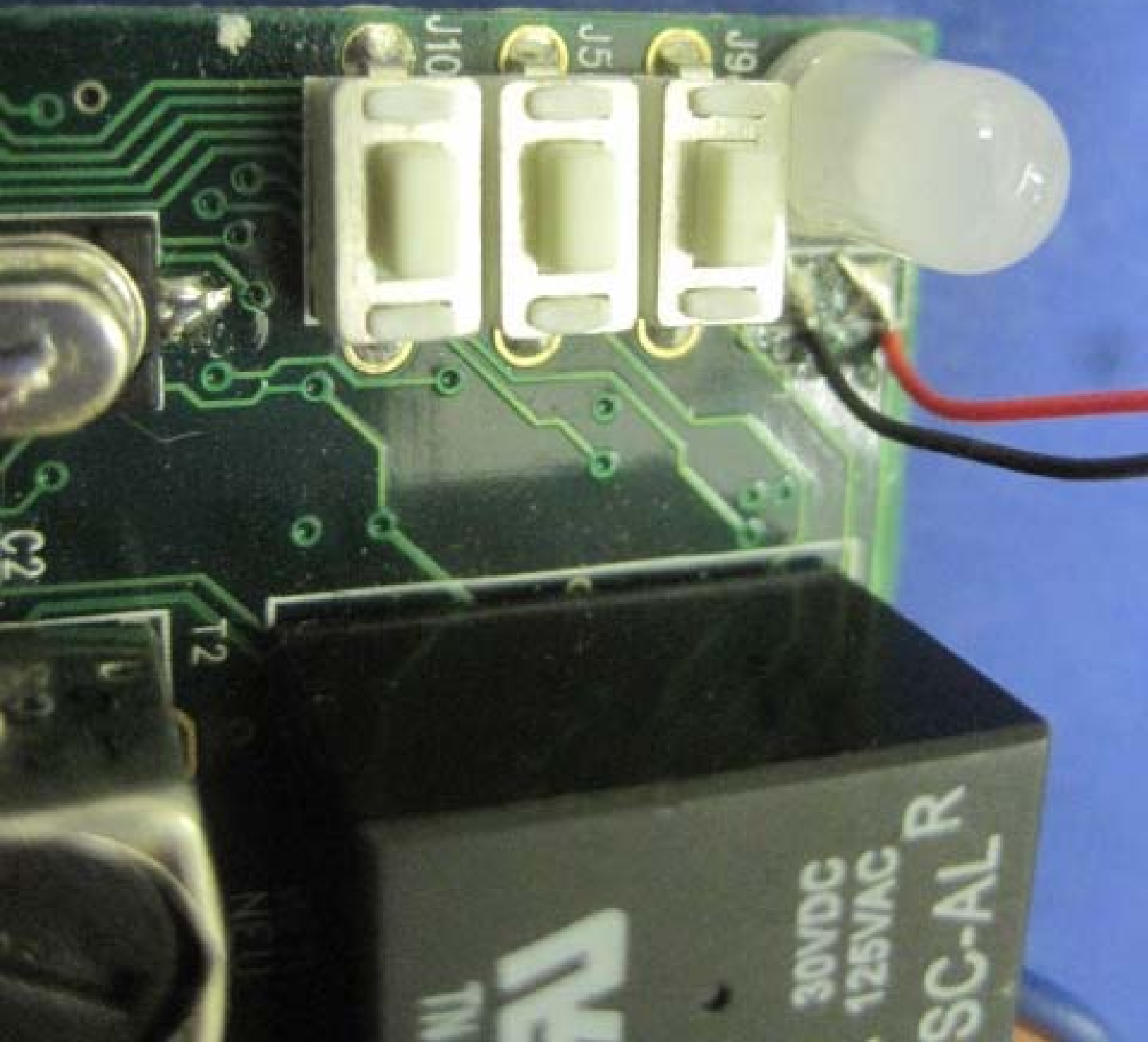
100V
100K

Rubycon
400V
100µF
RXC

100V
100K

100V
100K

100V
100K



J10

J15

J19

C2

T2

TM

30VDC
125VAC R
SC-AL R

ITT

9V 9V

TN 08D02

50/60Hz

16A/250V ~

16A 30V - - -

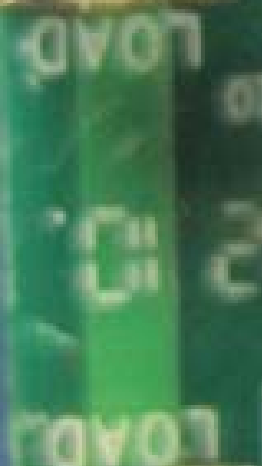
16A 30VDC

16A 125VAC

R

TRV-24VDC-SC-AL







TRV-24VDC-SC-AL
50/60Hz
16A/250V
16A/30V
16A 30VDC
16A 120VAC

LINE
LINE
LOAD
NEUTRAL

400V 100µF 16V

TRV

TRV

16A 30VDC
16A 120VAC