

TITLE: PLI Evaluation Report (RFI)
DRAWING: Q540502W.DWG
BY: Laura Bramschreiber and Clyde Pineda

FCC ID: SAN5405X

Page 28 of 48
Issued: 17 Jul 2004
Approved: Lee Pulver

FIGURE 5: PLI Photograph Number 5405C2734SJ-06 illustrates the top view of the EUT with the top cover removed.

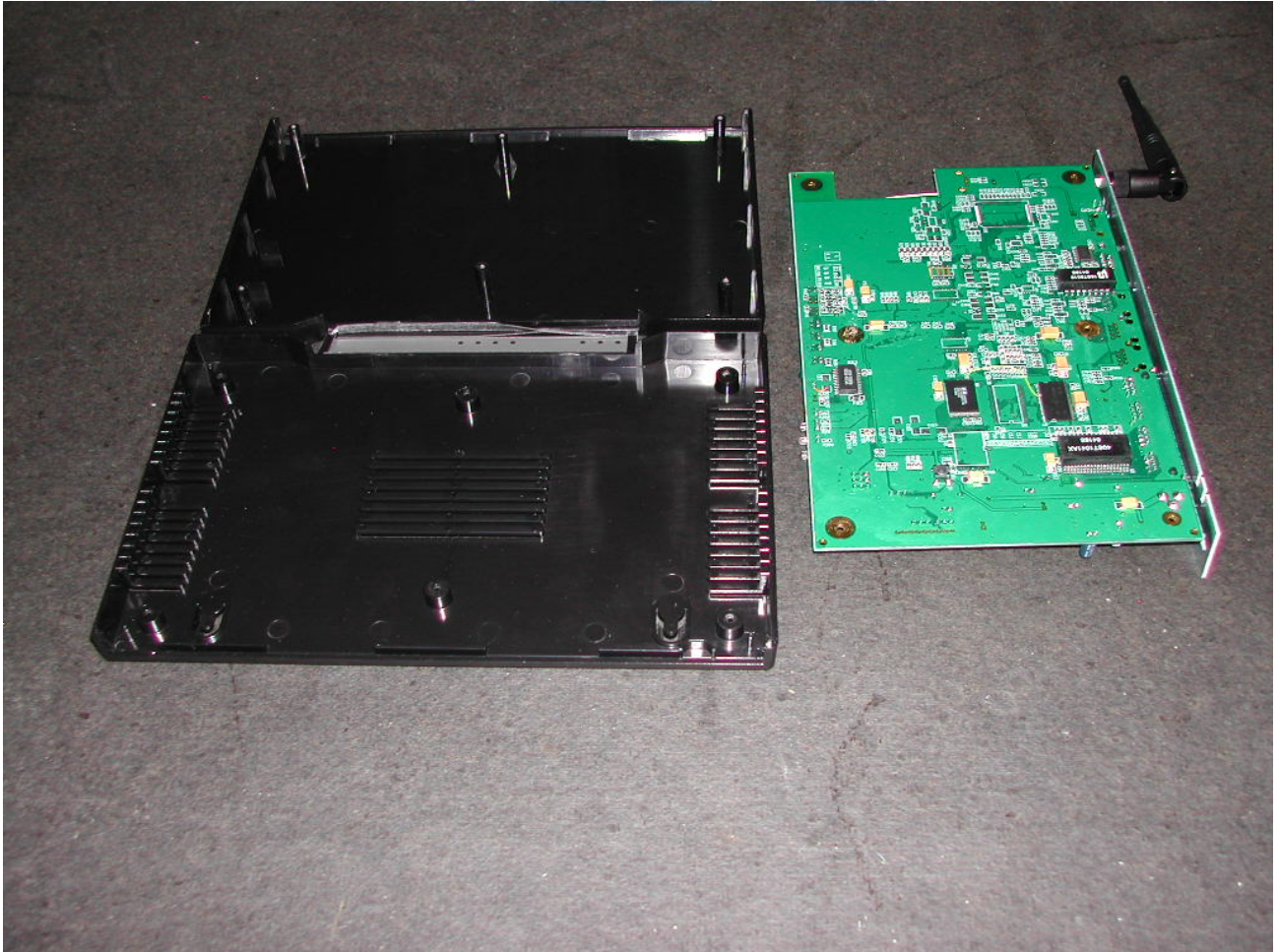


TITLE: PLI Evaluation Report (RFI)
DRAWING: Q540502W.DWG
BY: Laura Bramschreiber and Clyde Pineda

FCC ID: SAN5405X

Page 29 of 48
Issued: 17 Jul 2004
Approved: Lee Pulver

FIGURE 6: PLI Photograph Number 5405C2734SJ-07 illustrates the top and bottom chassis with the main board removed.

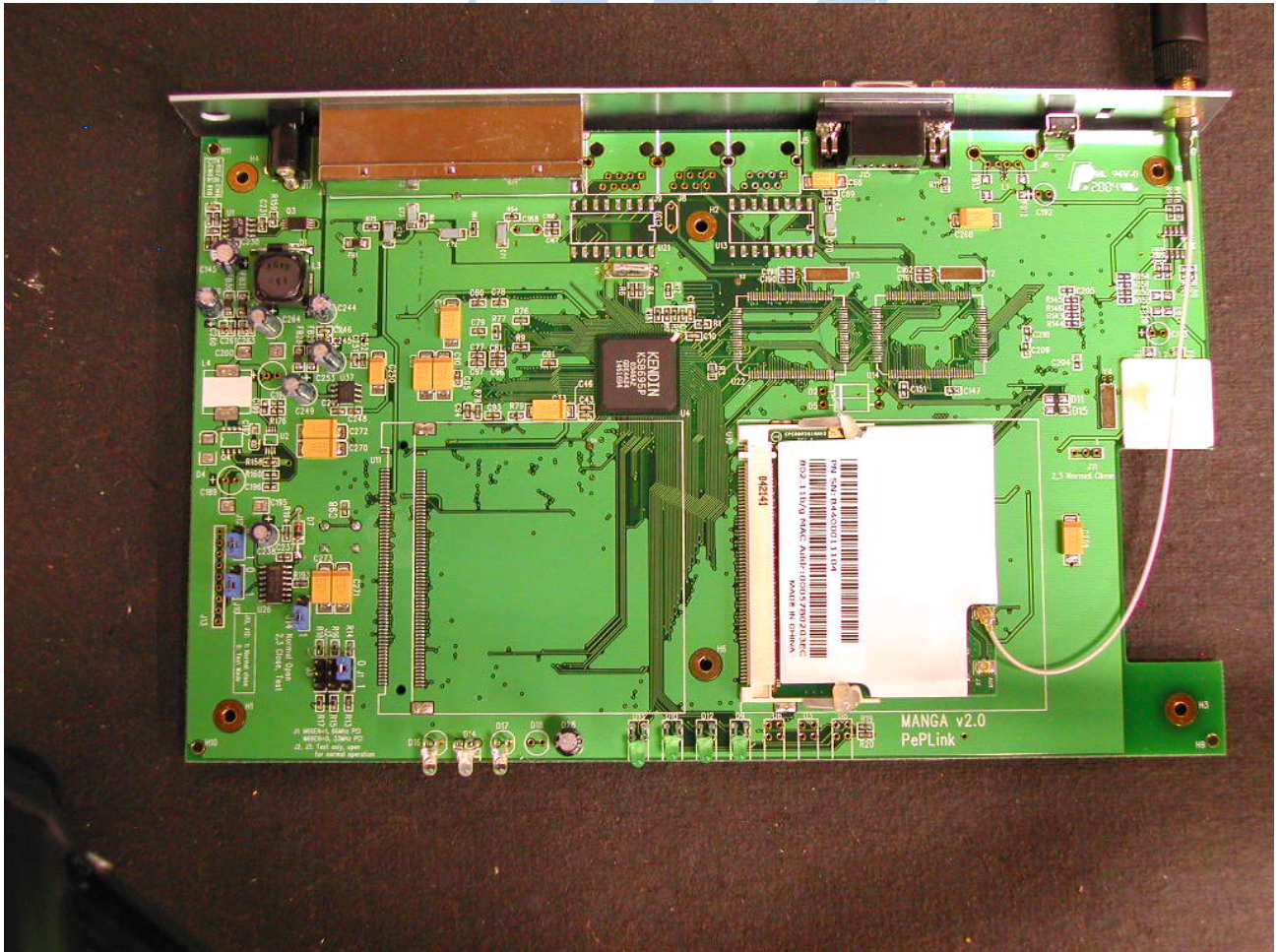


TITLE: PLI Evaluation Report (RFI)
DRAWING: Q540502W.DWG
BY: Laura Bramschreiber and Clyde Pineda

FCC ID: SAN5405X

Page 30 of 48
Issued: 17 Jul 2004
Approved: Lee Pulver

FIGURE 7: PLI Photograph Number 5405C2734SJ-08 illustrates the component side of the motherboard printed circuit assembly, MANGA v2.0.



TITLE: PLI Evaluation Report (RFI)
DRAWING: Q540502W.DWG
BY: Laura Bramschreiber and Clyde Pineda

FCC ID: SAN5405X

Page 31 of 48
Issued: 17 Jul 2004
Approved: Lee Pulver

FIGURE 8: PLI Photograph Number 5405C2734LG-06 illustrates the information label removed from the transceiver printed circuit assembly installed on component side of the motherboard printed circuit assembly, MANGA v2.0.



TITLE: PLI Evaluation Report (RFI)
DRAWING: Q540502W.DWG
BY: Laura Branschreiber and Clyde Pineda

FCC ID: SAN5405X

Page 32 of 48
Issued: 17 Jul 2004
Approved: Lee Pulver

FIGURE 9: PLI Photograph Number 5405C2734LG-07 illustrates the circuit side of the transceiver printed circuit assembly uninstalled from the motherboard printed circuit assembly, MANGA v2.0.

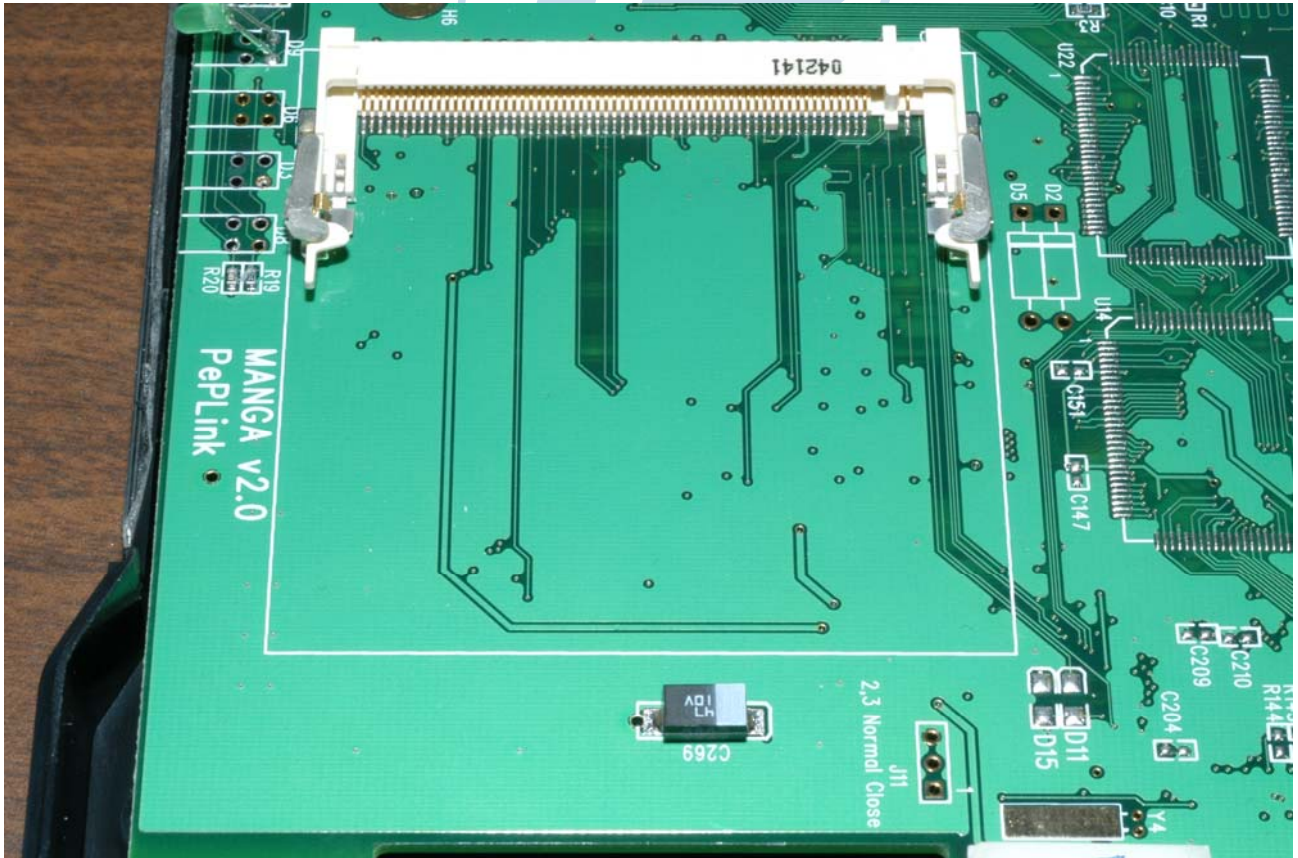


TITLE: PLI Evaluation Report (RFI)
DRAWING: Q540502W.DWG
BY: Laura Bramschreiber and Clyde Pineda

FCC ID: SAN5405X

Page 33 of 48
Issued: 17 Jul 2004
Approved: Lee Pulver

FIGURE 10: PLI Photograph Number 5405C2734SJ-08 illustrates the component side of the motherboard printed circuit assembly, MANGA v2.0 directly under the transceiver printed circuit assembly after removing the transceiver.



TITLE: PLI Evaluation Report (RFI) **FCC ID: SAN5405X**
DRAWING: Q540502W.02.DWG.doc Issued: 17 Jul 2004
BY: Laura Bramschreiber and Clyde Pineda

Page 33 of 50
Re-Issued: 11 Aug 2004
Approved: Lee Pulver

FIGURE 13: PLI Photograph Number 5405C2734LG-25 shows the top cover removed, exposing the circuit side of the Printed Circuit Assembly for the Wall adapter power supply assembly.

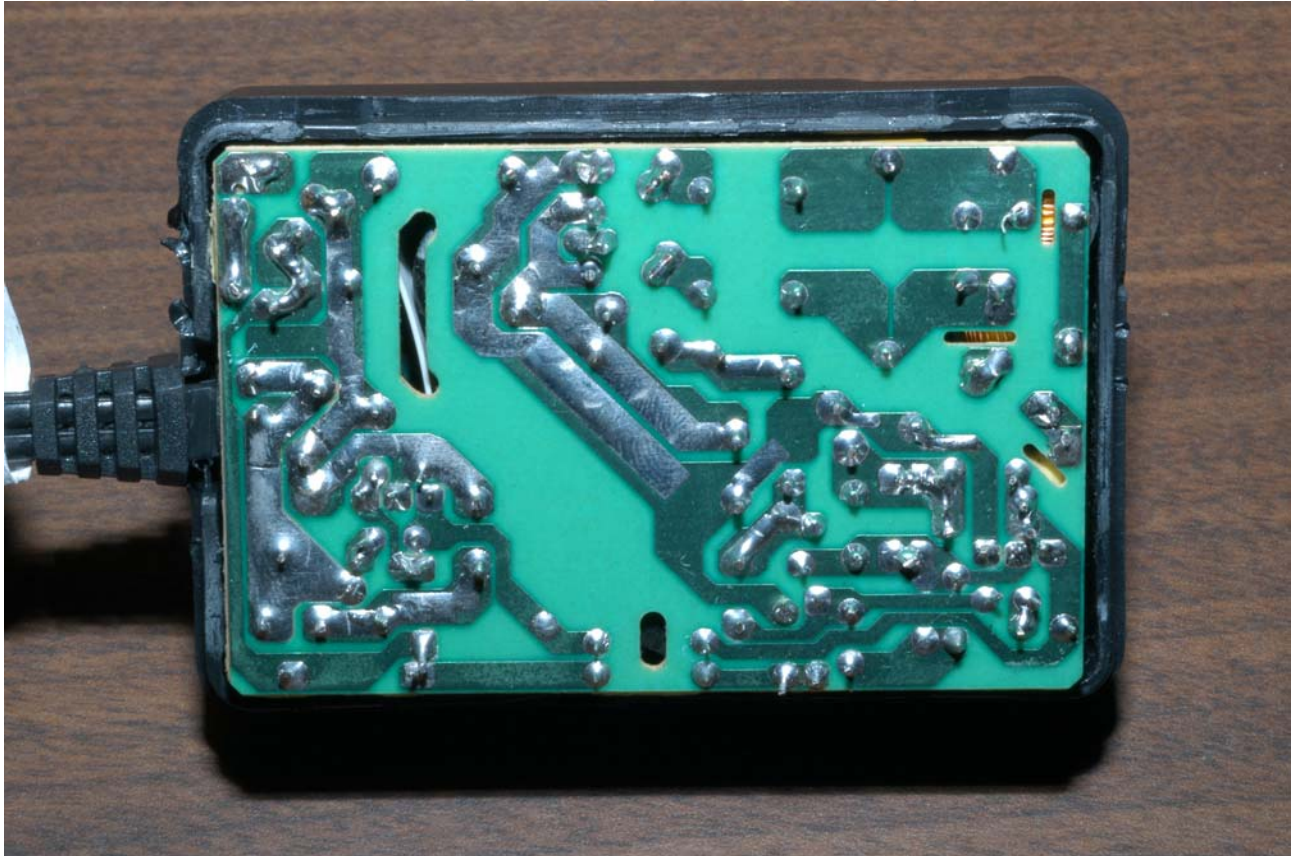


FIGURE 14: PLI Photograph Number 5405C2734LGLG-26 shows the EUT wall adapter with the enclosure removed from the printed circuit board. This view emphasizes the components on the Neutral side of the Printed Circuit Assembly. The Line and Neutral connections routed individually from the Printed Circuit Assembly to the contacts on the chassis.

