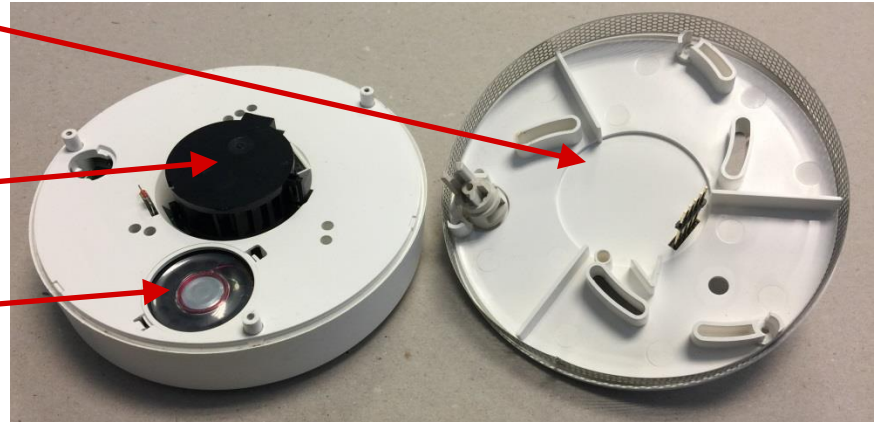


INTERNAL PICTURES

Baseplate and AC Power Supply Removed

Smoke Chamber

Sounder



Main PCBA

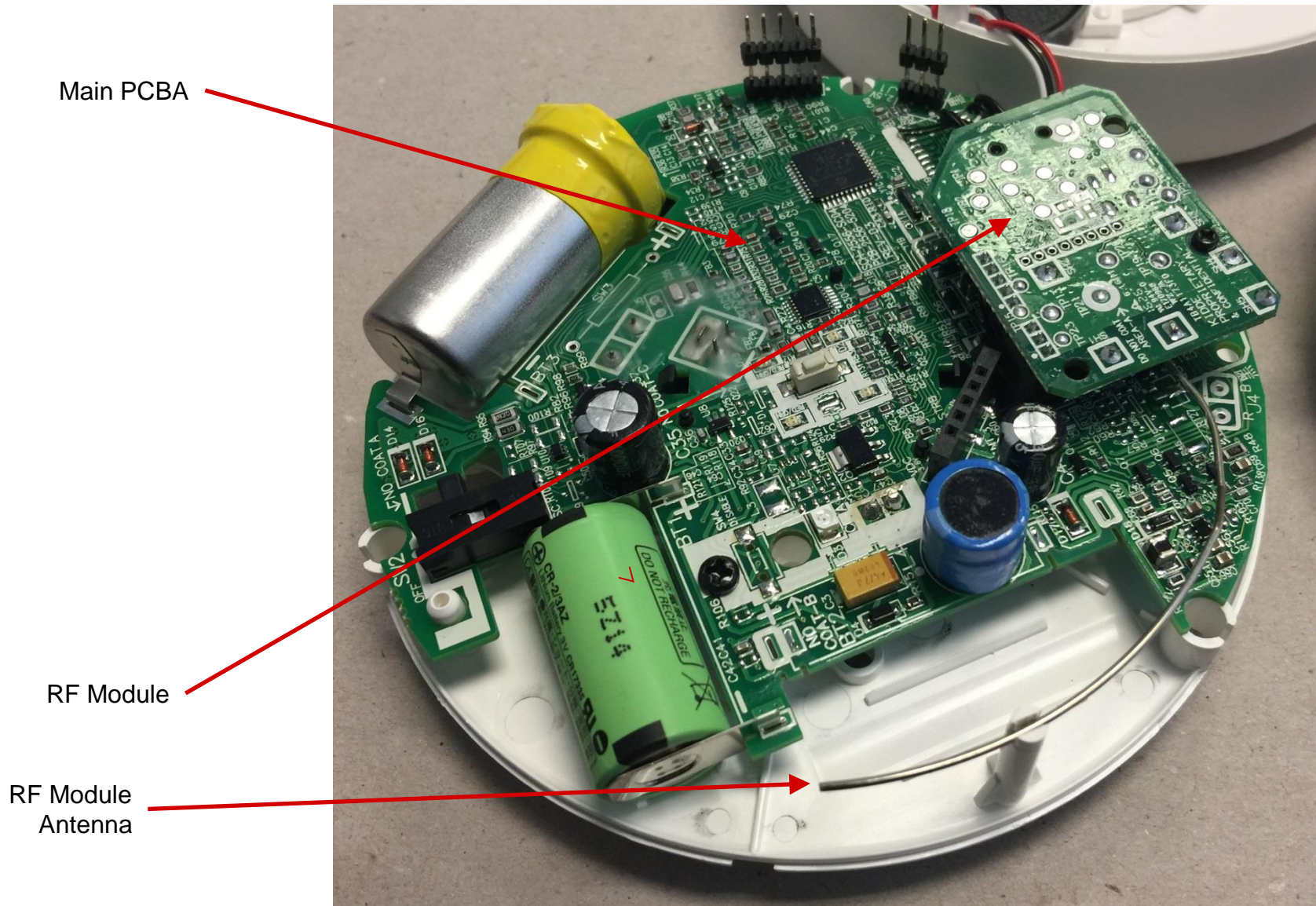
CO Sensor

RF Module

Battery

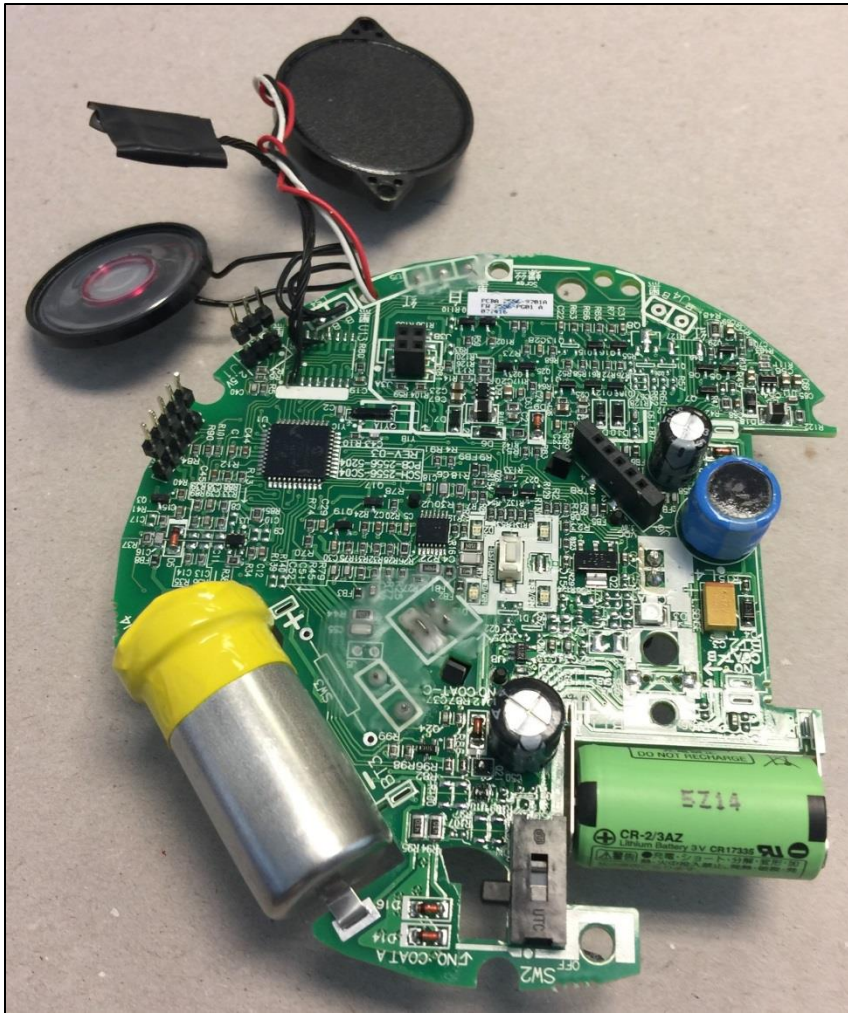


INTERNAL PICTURES

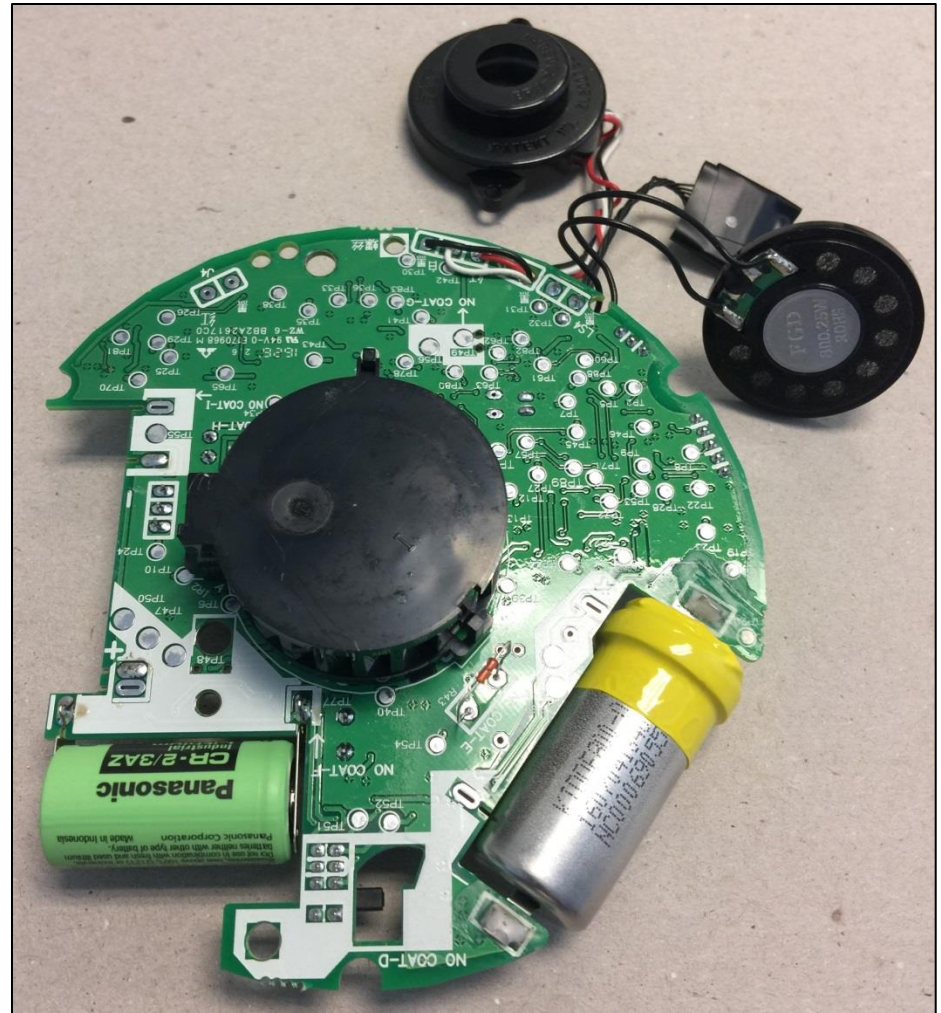


INTERNAL PICTURES

Main PCBA Top Side

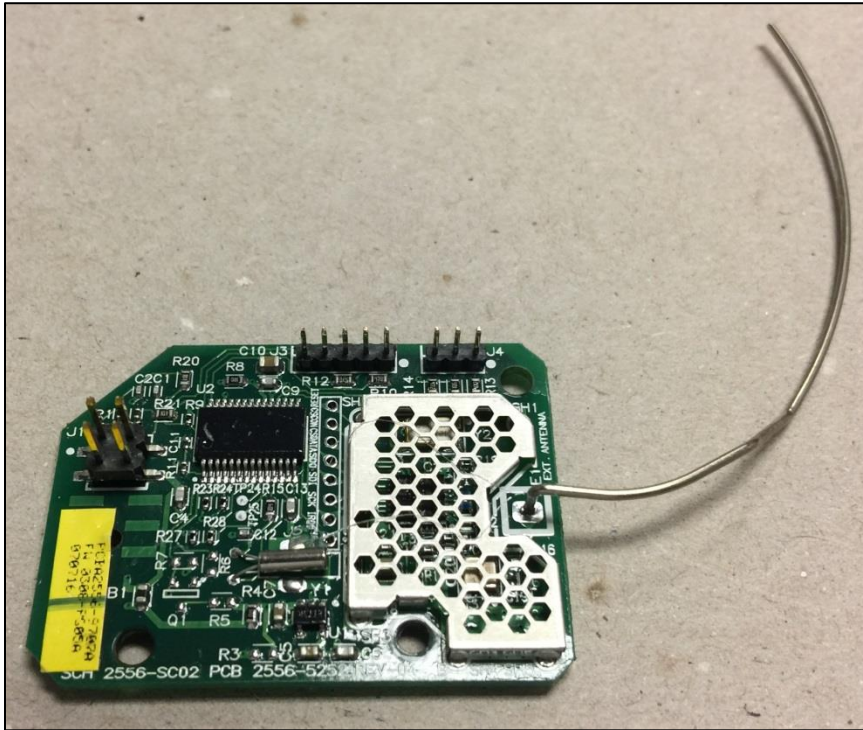


Main PCBA Bottom Side

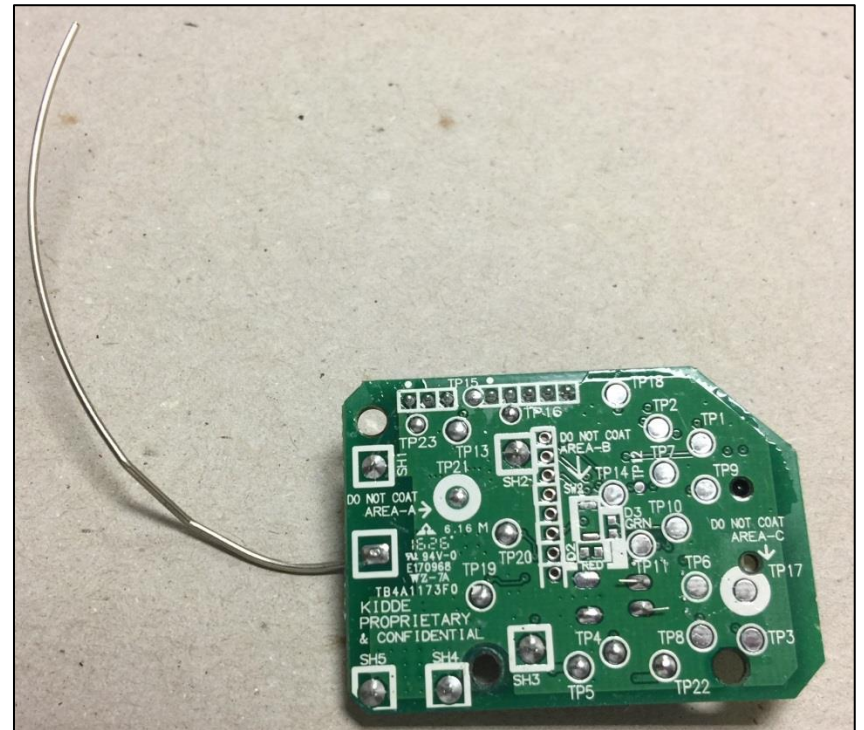


INTERNAL PICTURES

RF Module Top Side



RF Module Bottom Side



INTERNAL PICTURES

RF Module Top Side w/Shield Removed

