

Test Laboratory: Compliance Certification Services

## 6\_System Performance Check @ 2450MHz (Body Tissue)

**DUT: Dipole 2450 MHz; Type: D2450V2; Serial: D2450V2 - SN:748**

Phantom section: Flat Section

Frequency: 2450 MHz; Duty Cycle: 1:1

Medium parameters used:  $f = 2450$  MHz;  $\sigma = 1.97$  mho/m;  $\epsilon_r = 51.1$ ;  $\rho = 1000$  kg/m<sup>3</sup>

Measurement Standard: DASY4 (High Precision Assessment)

- **Room Ambient Temperature: 25.0 deg. C; Liquid Temperature: 24.0 deg. C**
- Area Scan setting - Find Secondary Maximum Within: 2.0 dB (58.35%)
- Probe: EX3DV3 - SN3531; ConvF(8.32, 8.32, 8.32);
- Sensor-Surface: 2.5mm (Mechanical Surface Detection)
- Electronics: DAE3 Sn500; Calibrated: 12/23/2003
- Phantom: SAM 2; Type: SAM 2; Serial: 1050
- Measurement SW: DASY4, V4.3 Build 16; Postprocessing SW: SEMCAD, V1.8 Build 123

**d=10mm, Pin=250mW/Area Scan (7x7x1):** Measurement grid: dx=15mm, dy=15mm

Maximum value of SAR (measured) = 17.9 mW/g

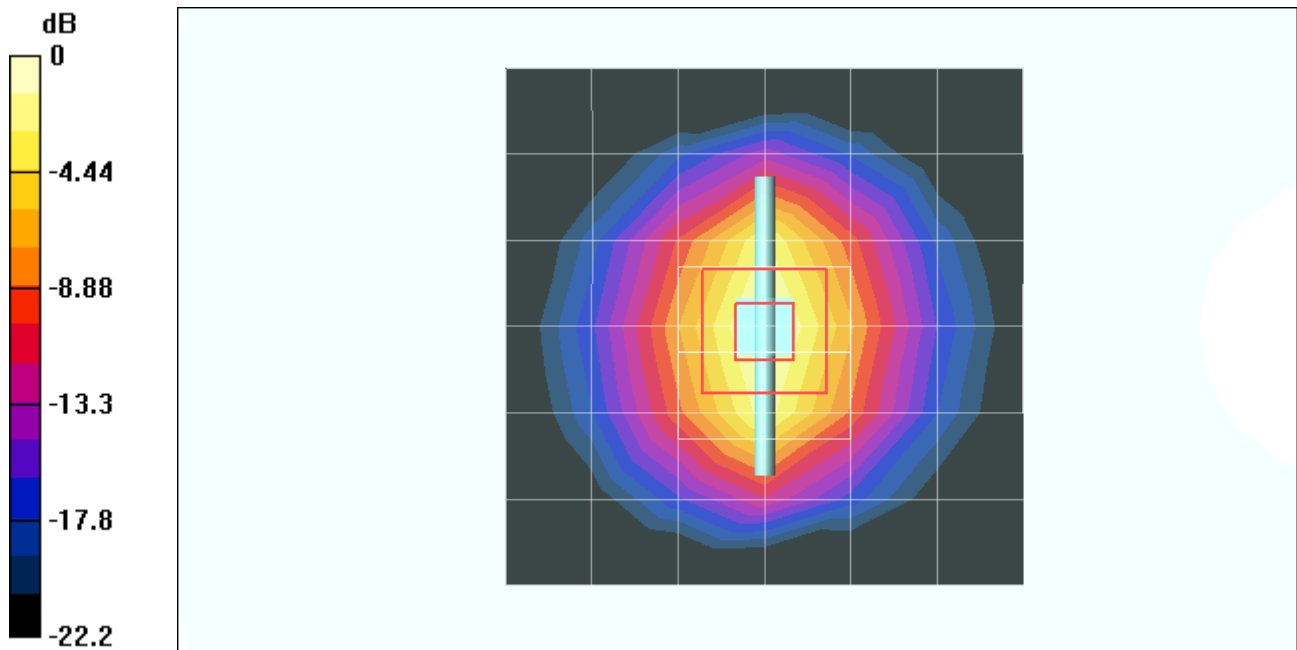
**d=10mm, Pin=250mW/Zoom Scan (5x5x7)/Cube 0:** Measurement grid: dx=7.5mm, dy=7.5mm, dz=5mm

Reference Value = 96.6 V/m; Power Drift = -0.0 dB

Peak SAR (extrapolated) = 25.6 W/kg

**SAR(1 g) = 12.7 mW/g; SAR(10 g) = 5.93 mW/g**

Maximum value of SAR (measured) = 17.5 mW/g



0 dB = 17.5mW/g

Test Laboratory: Compliance Certification Services

### 6\_System Performance Check @ 2450MHz (Body Tissue)

DUT: Dipole 2450 MHz; Type: D2450V2; Serial: D2450V2 - SN:748

Phantom section: Flat Section

Measurement Standard: DAS4 (High Precision Assessment)

**d=10mm, Pin=250mW/Z Scan (1x1x41):** Measurement grid: dx=20mm, dy=20mm, dz=2.5mm  
Maximum value of SAR (measured) = 20.8 mW/g

