

承 認 書

APPROVAL SHEET

CUSTOMER: 神腦國際企業股份有限公司

CUSTOMER MODEL NO.:

JOYMAX MODEL NO.: **IWX-241XSAXX-101**

DESCRIPTION: **2.4GHz Swivel Antenna**

REV.: **00**

DATE.: **2005/07/07**

Customer Approval	Joymax Approval



士誼科技事業股份有限公司
JOYMAX ELECTRONICS CO., LTD.

Tel:+886-3-4335698 Fax:+886-3-4335798.4335799
E-Mail:service@joymax.com.tw

桃園縣中壢市中壢工業區東園二路5號

No.5, Dong Yuan Rd.2, Zhongli Industrial Park,
Zhongli City, Tao Yuan, Taiwan, R.O.C.

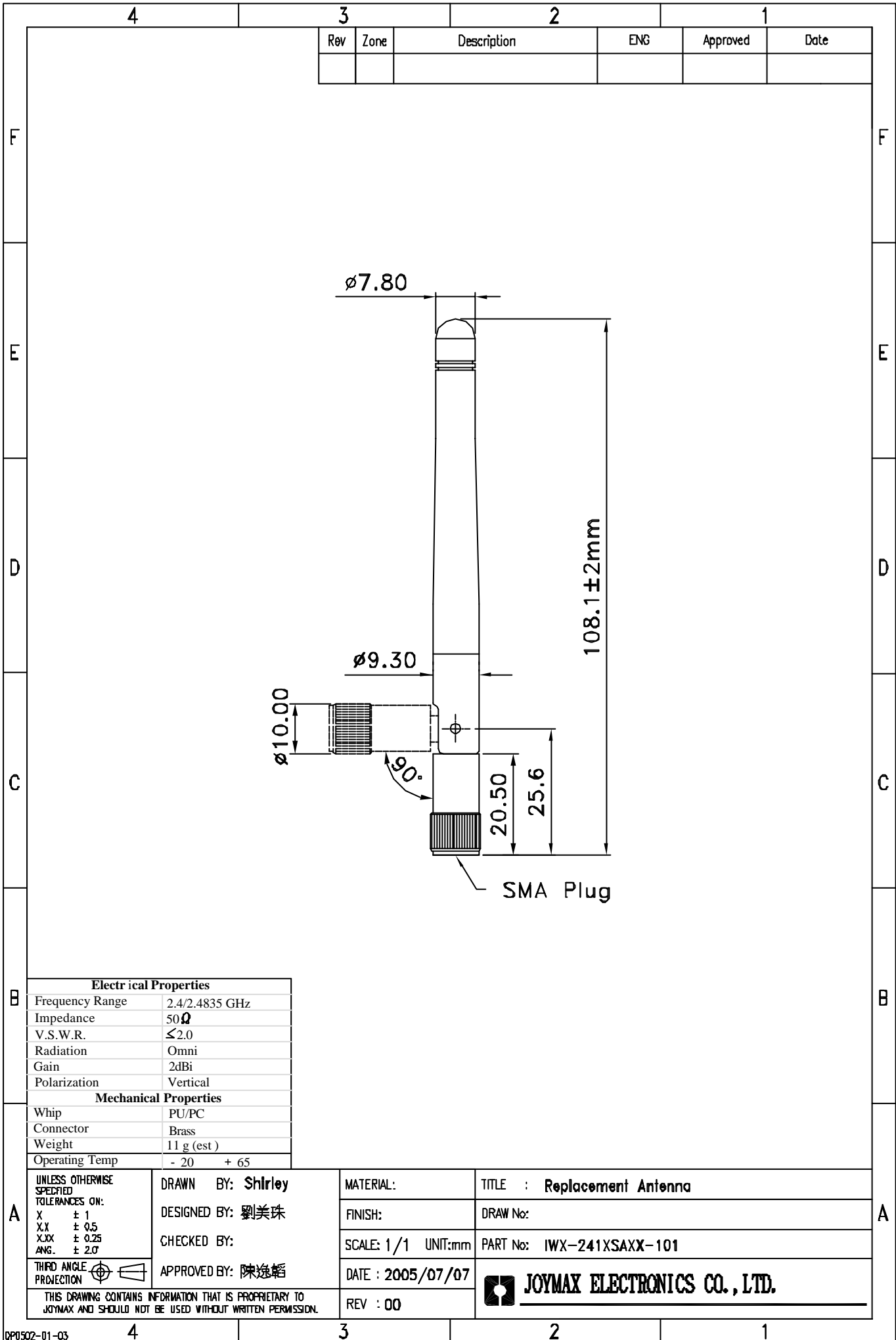
Http://www.joymax.com.tw

Index.

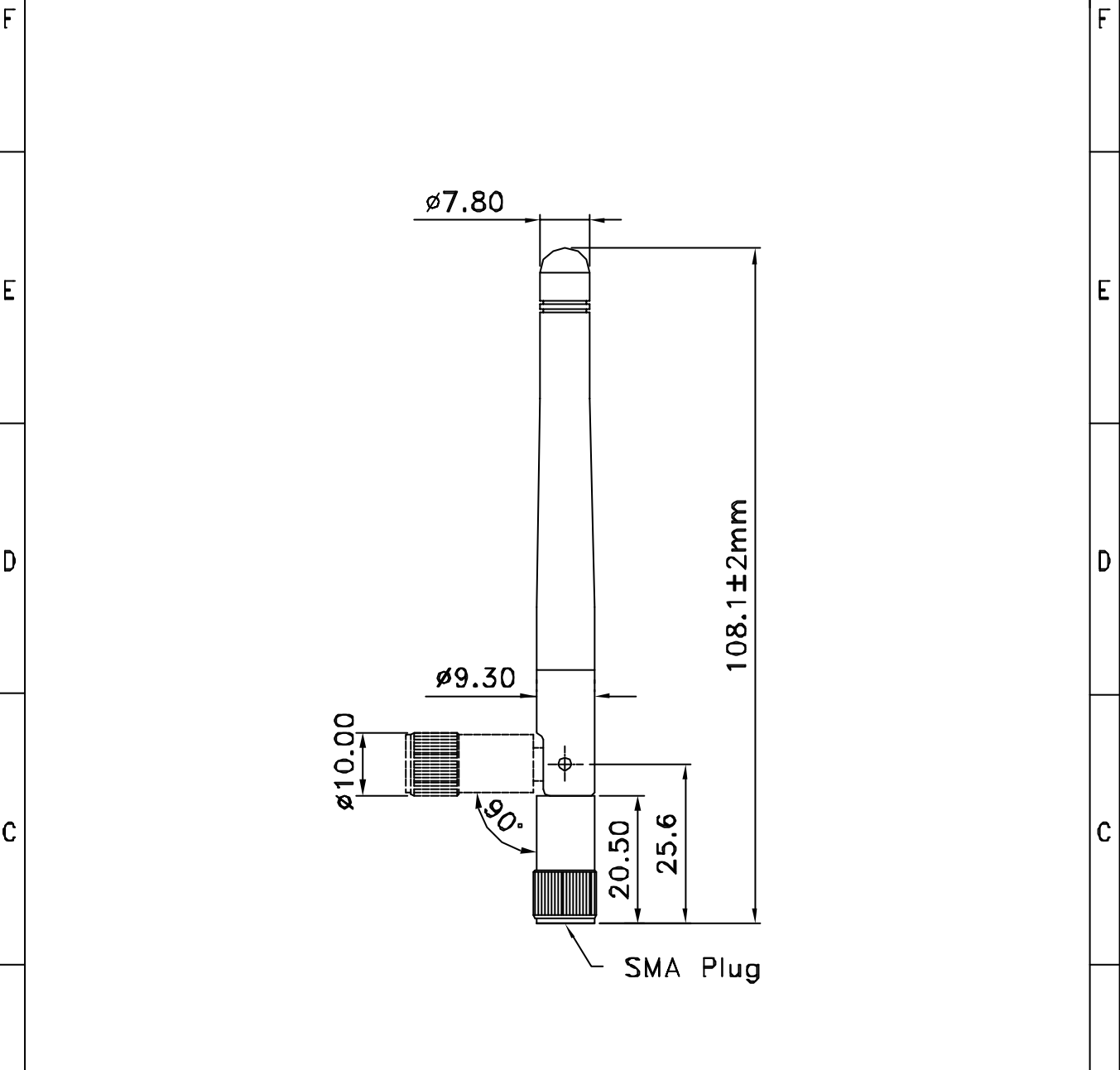
Item	Page
1. Drawing	1-1
2. Test report	
Electrical test	2-1
3. Connector	
Reverse SMA Plug	3-1
4. Packing	
PE 袋	
紙箱	

Modification History:

Rev.	Date	Content
00	2005/07/07	



3		2		1	
Rev	Zone	Description	ENG	Approved	Date



Electrical Properties	
Frequency Range	2.4/2.4835 GHz
Impedance	50Ω
V.S.W.R.	≤2.0
Radiation	Omni
Gain	2dBi
Polarization	Vertical
Mechanical Properties	
Whip	PU/PC
Connector	Brass
Weight	11 g (est)
Operating Temp	- 20 + 65

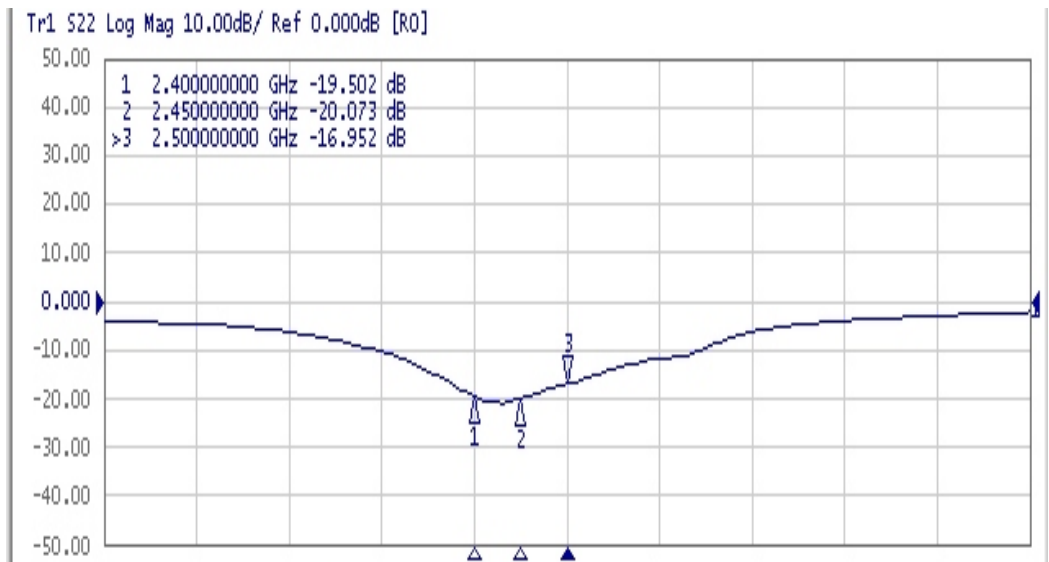
UNLESS OTHERWISE SPECIFIED TOLERANCES ON: X ± 1 X.X ± 0.5 X.XX ± 0.25 ANG. ± 2.0° THIRD ANGLE PROJECTION	DRAWN BY: Shirley	MATERIAL:	TITLE : Replacement Antenna
	DESIGNED BY: 劉美珠	FINISH:	DRAW No:
	CHECKED BY:	SCALE: 1/1 UNIT:mm	PART No: IWX-241XSAXX-101
	APPROVED BY: 陳逸韜	DATE : 2005/07/07	REV : 00
THIS DRAWING CONTAINS INFORMATION THAT IS PROPRIETARY TO JOYMAX AND SHOULD NOT BE USED WITHOUT WRITTEN PERMISSION.			

Model. IWX-241XSAXX-101

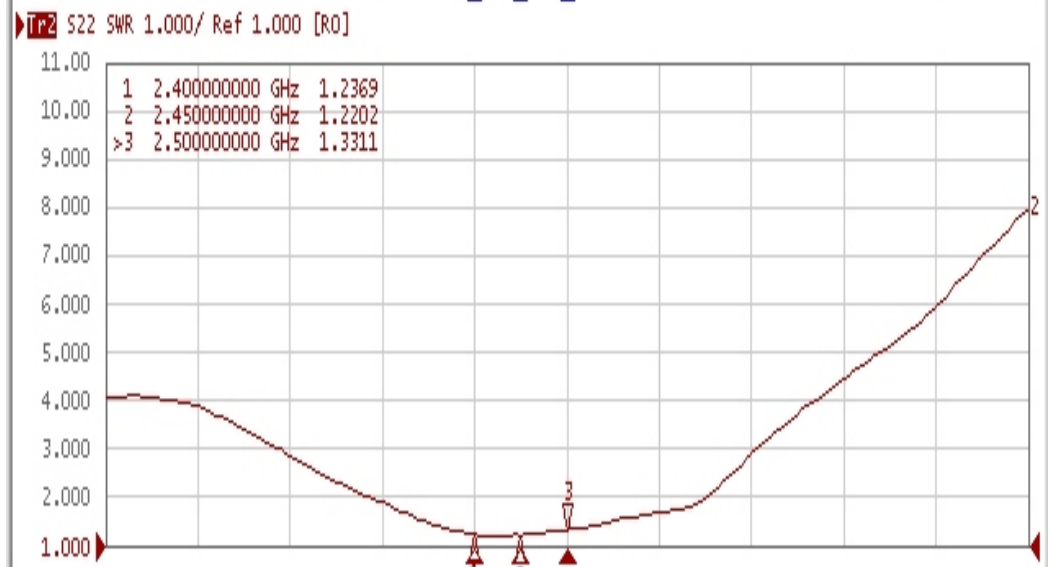
Test Report

Electrical Test

Return loss



V.S.W.R.



Connector

Reverse SMA Plug

The connector is a SMA plug join on the antenna.

Electrical Properties	1) Impedance	50 ohm
	2) Frequency Range	0~10 GHz
	3) V.S.W.R.	1.5 (Max.)
	4) Working Voltage	250 Vrms
	5) Dielectric Withstanding	670 Vrms
	6) Voltage Insulation Resistance	2000Megohm
	7) Contact Resistance	Center contact: 3.0 Milliohm (Max.) Outer contact: 2.0 Milliohm (Max.)
	8) Insertion Loss(2.4GHz)	0.3 dB

Mechanical Properties	1) Recommended coupling nut torque	4.0 in.lbs. 8.8 in.lbs.
	2) Coupling nut retention force	50 lbs.
	3) Contact captivation axial	5 lbs.

Environmental Ratings	1) Operating Temperature	- 65 + 165
	2) Thermal Shock	MIL-STD-202, Method 107, Condition B
	3) Corrosion	MIL-STD-202, Method 101, Condition B
	4) Shock	MIL-STD-202, Method 213, Condition I
	5) Vibration	MIL-STD-202, Method 204, Condition D
	6) Moisture Resistance	MIL-STD-202, Method 106

Material Specifications	1) Body	Brass Per JIS H3250 C3604 BD, Black chrome Plated
	2) Contact	Beryllium Copper Per QQ-C-530, Gold Plated Per MIL-G-45204
	3) Insulator	PTFE Fluorocarbon Per ASTM D 1710
