

TBW-101UB TBW-102UB

Bluetooth USB Adapter Quick Installation Guide

Guide d'installation rapide de l'adaptateur USB Bluetooth

Bluetooth USB-Adapter Kurzanleitung zur Installation

Guía de Instalación Rápida del Adaptador USB Bluetooth

Version 5.31.05



TRENDnet[®]
TRENDware, USA
What's Next in Networking

Table of Contents

English	1
1. Prepare for Installation	1
2. Install Bluetooth Utility	2
3. Disabling Bluetooth Services for Windows XP SP2	5
4. Driver Installation	7
5. Pairing Bluetooth Devices	9
Français	12
1. Préparation de l'installation	12
2. Installation de l'utilitaire Bluetooth	13
3. Désactivation des services Bluetooth pour Windows XP SP2	16
4. Installation du pilote	18
5. Appariement des périphériques Bluetooth	20
Deutsch	23
1. Vorbereitung der Installation	23
2. Installation des Bluetooth-Programms	24
3. Deaktivierung der Bluetooth-Services für Windows XP SP2	27
4. Installation der Treiber	29
5. Kopplung der Bluetooth-Geräte	31
Español	34
1. Puesta a punto para la instalación	34
2. Instalación de la herramienta Bluetooth	35
3. Desactivación de los Servicios Bluetooth para Windows XP SP2	38
4. Instalación del controlador	40
5. Dispositivos de asociación o pairing Bluetooth	42
Troubleshooting	45

English QIG

1. Prepare for Installation

Thank you for purchasing the TBW-101UB Bluetooth USB Adapter / TBW-102UB High-Power Bluetooth USB Adapter. This adapter will allow you to share files, resources, and an internet connection between multiple Bluetooth-enabled devices.

Following the installation instructions should be quick and easy. If you run into problems, please refer to the Troubleshooting section or User's Guide on the CD-ROM. If you need further technical support, please visit www.trendnet.com or call us by phone.

Verify Package Contents

Please check to make sure you have everything in the box:



Verify Equipment

Before installing the Bluetooth adapter, you should have a personal computer with:

- Windows 98SE, ME, 2000 or XP installed
- One USB 1.1 port available
- A CD-ROM Drive

2. Install Bluetooth Utility

NOTE: You must install the Bluetooth Utility program before you install the Bluetooth USB Adapter.

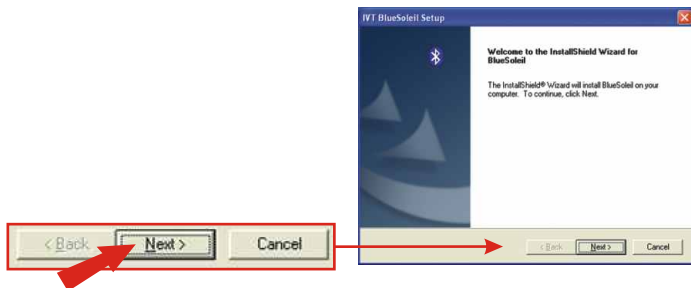
1. Turn on your computer.
2. Insert the Utility CD-ROM into your CD-ROM Drive.



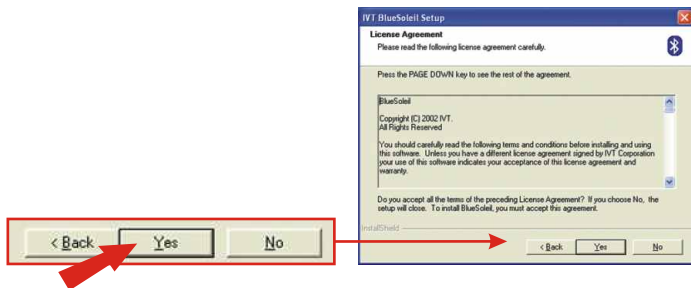
3. The Auto-Run function will automatically start the software installation wizard. If the Auto-Run function does not start automatically, please browse the installation CD to find the "Setup.exe" file. Double-click Auto-Run.exe to continue.
4. Select the language for this installation and click **OK**.



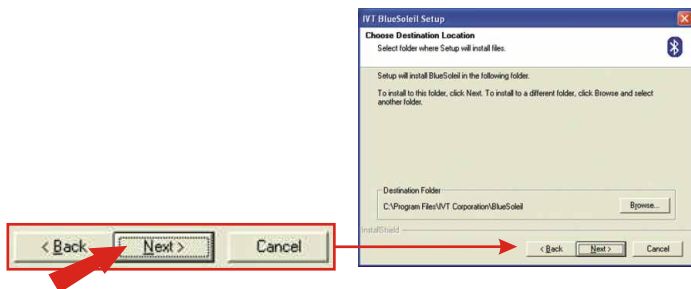
5. Click Next.



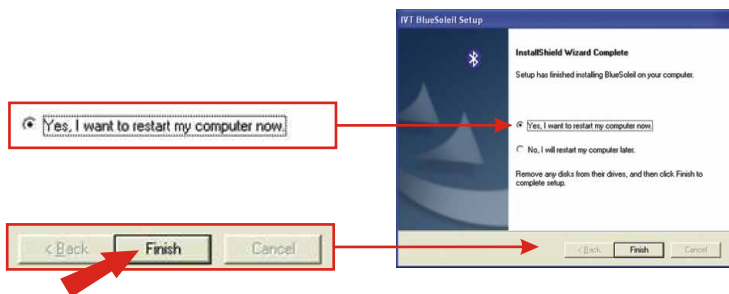
6. Click Yes.



7. Click Next.



8. Select **Yes, I want to restart my computer now** and click **Finish**.



9. After restarting your computer, insert the TBW-101UB/TBW-102UB into one of your USB ports.

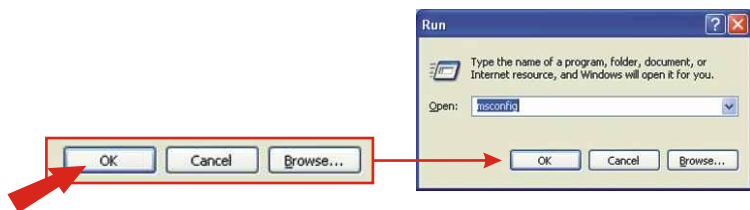


3. Disabling Bluetooth Services for Windows XP SP2

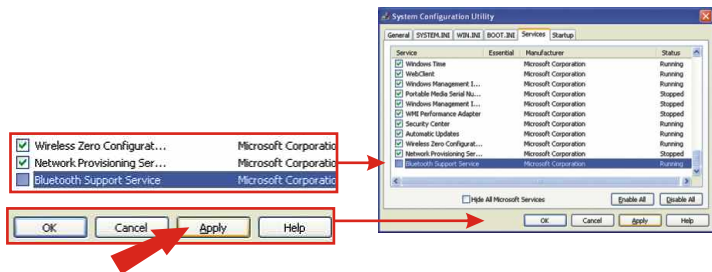
For Windows XP SP1/2000/ME/98SE users, please continue to section 4. **Driver Installation**

Windows XP SP2

1. Click **Start**, click **Run**, type in **msconfig** and click **OK**.



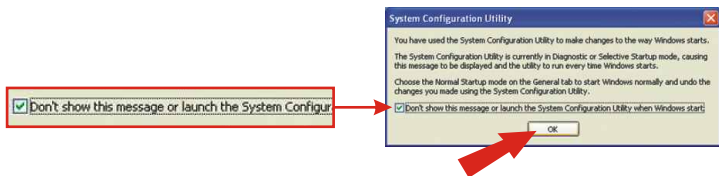
2. Click the **Services** tab and uncheck **Bluetooth Support Service** by **Microsoft Corporation**. Click **Apply** and click **Close**.



3. Click **Restart**.



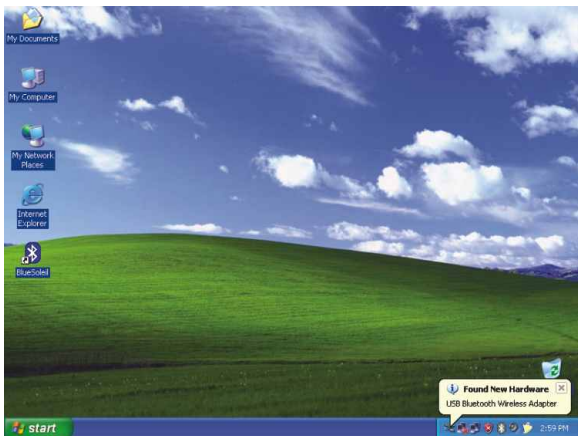
4. After restarting your computer, the System Configuration Utility will appear. Check **Don't show this message** and click **OK**.



4. Driver Installation

Windows XP

1. After inserting the TBW-101UB/TBW-102UB into your USB slot, Windows will automatically install your drivers. Please continue to section **5. Pairing Bluetooth Devices**.



Windows 2000/ME/98SE

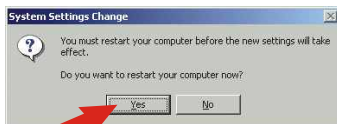
1. Click **OK**.



2. Click **Finish**.



3. Click **Yes** to restart. If you do not get this message, please restart your computer manually.

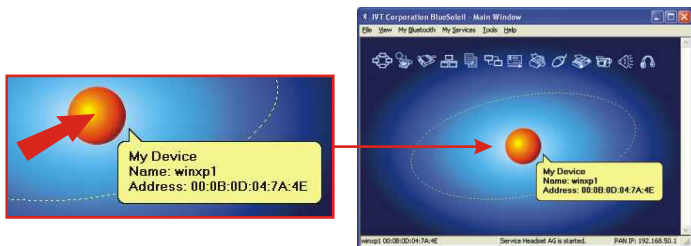


5. Pairing Bluetooth Devices

1. Double-click the Bluetooth icon located at the bottom right-hand corner.



2. Click the orange globe to search for Bluetooth devices.



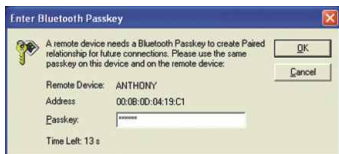
3. Double-click the Bluetooth enabled device.



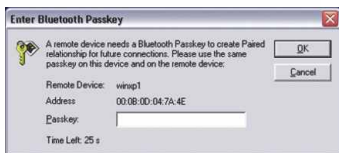
4. All available Bluetooth services are highlighted in yellow for your convenience. Double-click the Bluetooth service you want to enable. In this example, Bluetooth File Transfer Service is selected.



5. The selected computer will be prompted for a password. This password can be anything from letters to numbers. However, make sure that both Bluetooth devices share the same password. In this example, the password is **123456**. Type **123456** for both devices.



← **Computer 1**

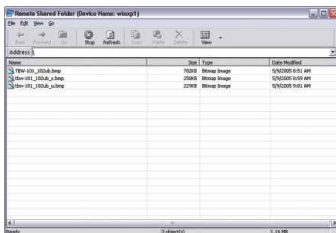


← **Computer 2**

6. Click **Yes** for both devices.



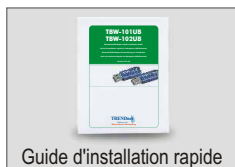
7. After pairing both Bluetooth enabled computers, a list of shared files will appear. Download any selected file.



1. Préparation de l'installation

Vérification du contenu de l'emballage

Veillez vérifier la présence des éléments suivants dans la boîte :



Vérification de l'équipement

Pour installer l'adaptateur Bluetooth, vous devez disposer d'un ordinateur personnel équipé :

- Windows 98SE, ME, 2000 ou XP installé
- Un port USB 1.1 disponible
- Un lecteur de CD-ROM

2. Installation de l'utilitaire Bluetooth

Remarque : Vous devez installer le programme Bluetooth Utility avant d'installer l'adaptateur USB Bluetooth.

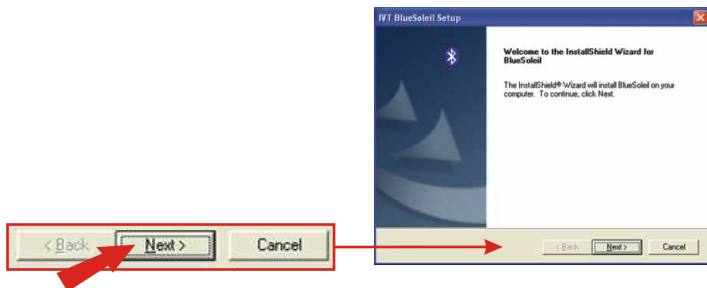
1. Allumez votre ordinateur.
2. Insérez le CD-ROM utilitaire dans le lecteur.



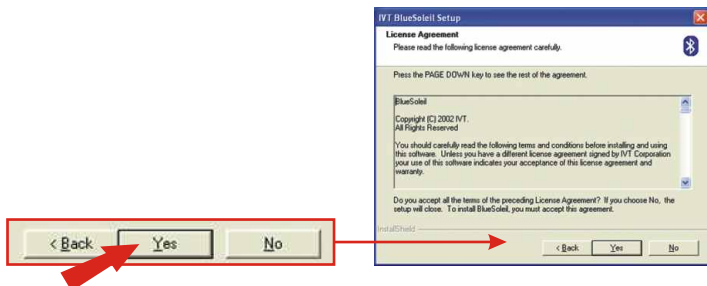
3. La fonction de lancement automatique lancera automatiquement l'assistant d'installation du programme. Si le lancement automatique ne s'effectue pas, parcourez le CD d'installation pour trouver le fichier « Setup.exe ». Double-cliquez sur Auto-Run.exe pour continuer.
4. Choisissez la langue d'installation et cliquez sur **OK**.



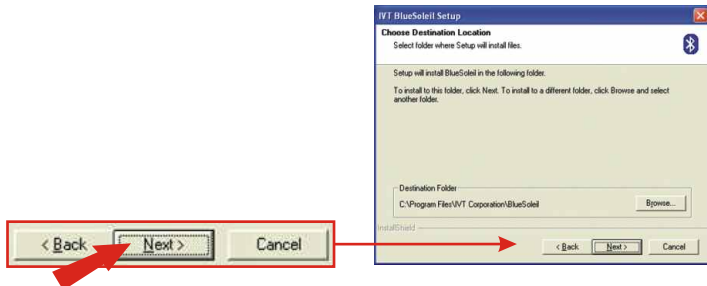
5. Cliquez sur **Next** (Suivant).



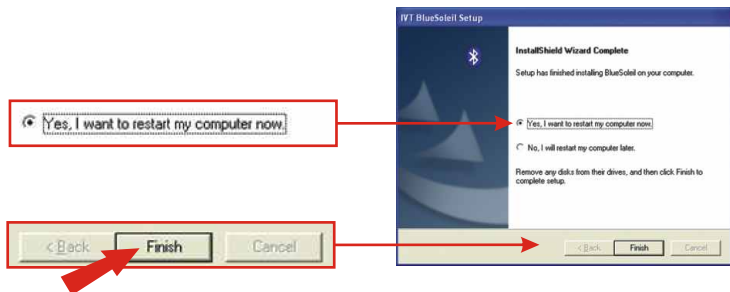
6. Cliquez sur **Yes** (Oui).



7. Cliquez sur **Next** (Suivant).



8. Sélectionnez **Yes, I want to restart my computer now** (Oui, je désire redémarrer mon ordinateur maintenant) et cliquez sur **Finish** (Terminer).



9. Après avoir redémarré votre ordinateur, branchez le TBW-101UB/ TBW-102UB à l'un de vos ports USB. of your USB ports.

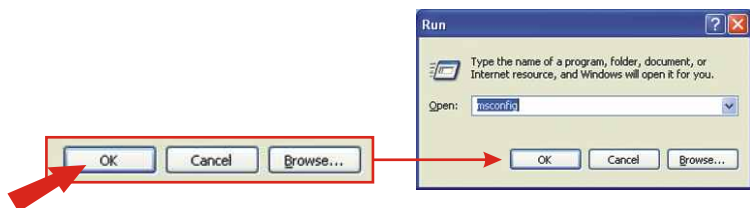


3. Désactivation des services Bluetooth pour Windows XP SP2

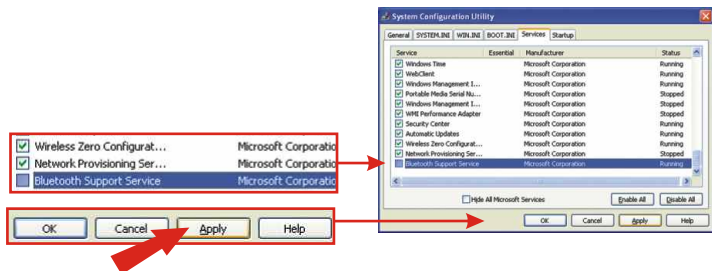
Les utilisateurs Windows XP SP1/2000/ME/98SE sont invités à poursuivre avec le point 4. **Installation des pilotes.**

Windows XP SP2

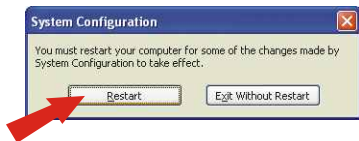
1. Cliquez sur **"Start"** (Démarrer), sur **"Run"** (Exécuter), tapez-y **msconfig** et cliquez sur **OK**.



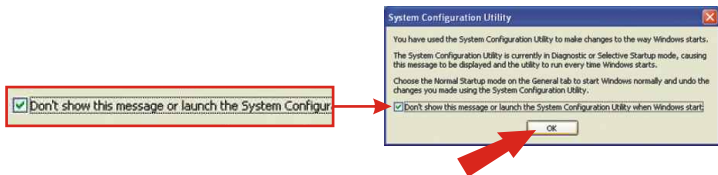
2. Cliquez sur l'onglet **Services** et décochez **Bluetooth Support Service** de **Microsoft Corporation**. Cliquez sur **Apply** (Appliquer) et ensuite sur **Close** (Fermer).



3. Cliquez sur **Restart** (Relancer).



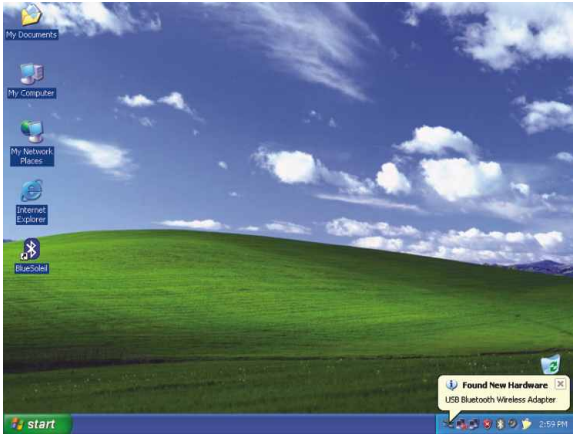
4. Une fois votre ordinateur redémarré, la fenêtre System Configuration Utility (utilitaire de configuration système) s'affichera. Cochez **Don't show this message** (Ne plus montrer ce message) et cliquez sur **OK**.



4. Installation du pilote

Windows XP

1. Après branché le TBW-101UB/TBW-102UB à l'un de vos ports USB, Windows installera automatiquement vos pilotes. Veuillez poursuivre par le point **5. Appariement des périphériques Bluetooth**.

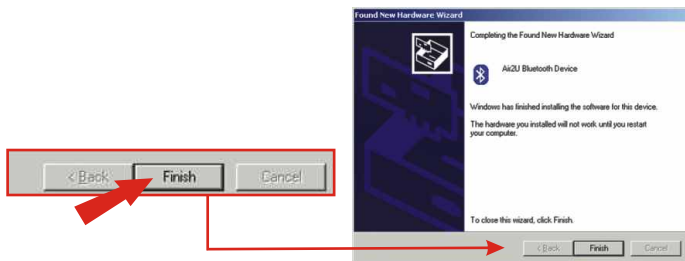


Windows 2000/ME/98SE

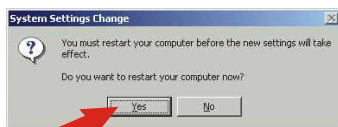
1. Cliquez sur OK.



2. Cliquez sur **Finish** (Terminer).



3. Cliquez sur **Yes** (Oui) pour redémarrer. Si vous ne recevez pas ce message, veuillez redémarrer votre ordinateur manuellement.

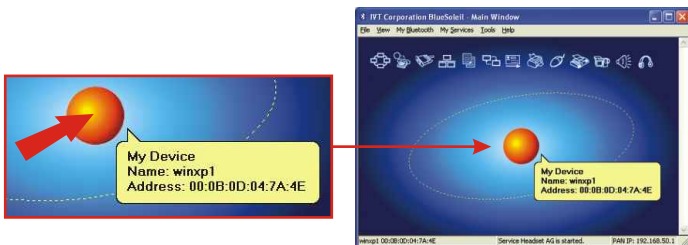


5. Appariement des périphériques Bluetooth

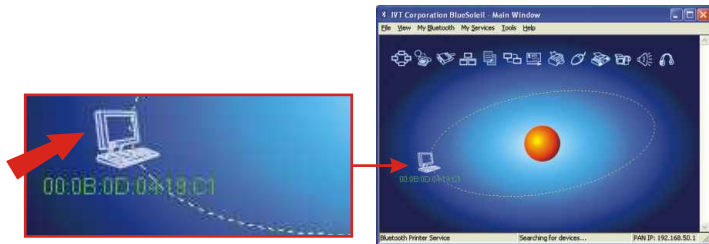
1. Double-cliquez sur l'icône Bluetooth située dans le coin inférieur droit.



2. Cliquez sur la boule orange pour rechercher les périphériques Bluetooth.



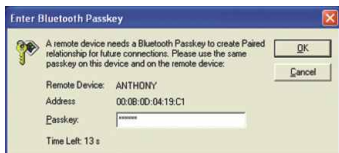
3. Double-cliquez sur les périphériques Bluetooth.



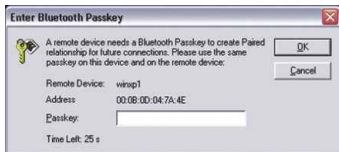
4. Tous les services Bluetooth disponibles sont surlignés en jaune pour plus de commodité. Double-cliquez sur les périphériques Bluetooth que vous désirez activer. Dans cet exemple, le service de transfert de fichiers Bluetooth est sélectionné.



5. L'ordinateur sélectionné recevra un message demandant un mot de passe. Ce mot de passe peut se composer à votre choix de lettres ou de chiffres. Assurez-vous cependant que les périphériques Bluetooth partagent le même mot de passe. Dans cet exemple, le mot de passe est **123456**. Tapez **123456** pour les deux périphériques.



← Computer 1

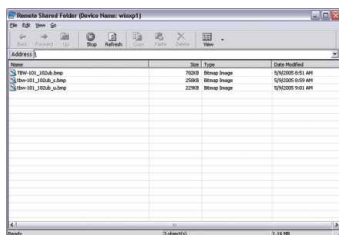


← Computer 2

6. Cliquez sur **Yes** (Oui) pour les deux périphériques.



7. Après avoir appairé les deux ordinateurs activés Bluetooth, une liste des fichiers partagés apparaîtra. Téléchargez n'importe quel fichier sélectionné.



1. Vorbereitung der Installation

Prüfung des Packungsinhalts

Prüfen Sie bitte, ob alle erforderlichen Einzelteile in der Packung vorhanden sind:



Prüfung Ihrer Ausrüstung

Um den Bluetooth-Adapter installieren zu können, benötigen Sie einen Personal-Computer mit:

- Windows 98SE, ME, 2000 oder XP
- einem verfügbaren USB-1.1-Port
- einem CD-ROM-Laufwerk

2. Installation des Bluetooth-Programms

Hinweis: Vor der Installation des Bluetooth USB-Adapters müssen Sie zuerst das Bluetooth-Dienstprogramm installieren.

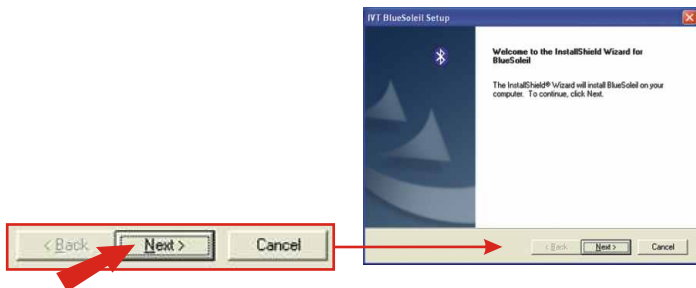
1. Schalten Sie Ihren Computer ein.
2. Legen Sie die Programm-CD in Ihr CD-ROM-Laufwerk ein.



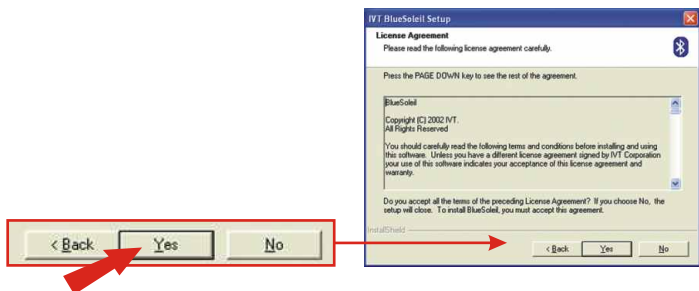
3. Die Autorun-Funktion startet automatisch den Assistenten zum Installieren der Software. Falls die Autorun-Funktion nicht automatisch starten sollte, suchen Sie bitte auf der Installations-CD nach der „Setup.exe“-Datei. Doppelklicken Sie dann auf Auto-Run.exe.
4. Wählen Sie die gewünschte Sprache aus und klicken Sie auf **OK**.



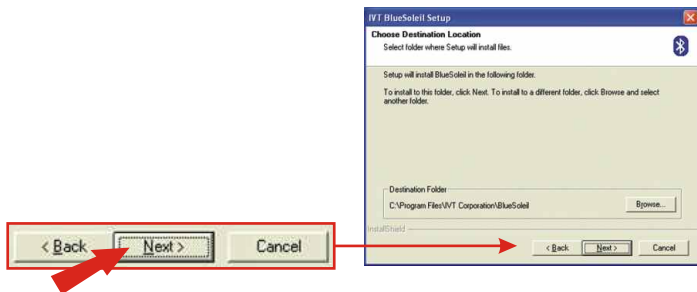
5. Klicken Sie auf **Next** (Weiter).



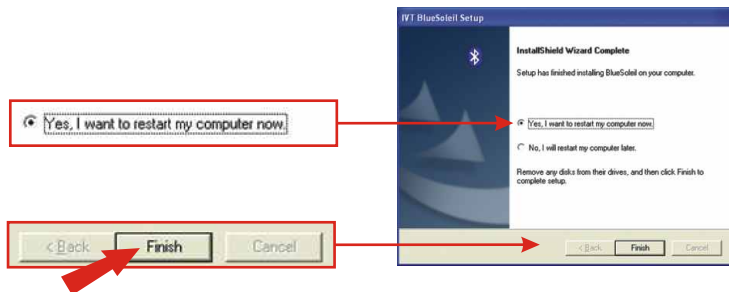
6. Klicken Sie auf **Yes** (Ja).



7. Klicken Sie auf **Next** (Weiter).



8. Markieren Sie **Yes, I want to restart my computer now** (Ja, ich möchte meinen Computer jetzt neu starten) und klicken Sie auf **Finish** (Fertigstellen).



9. Sobald Ihr Computer neu gestartet ist, stecken Sie den TBW-101UB/TBW-102UB in einen USB-Steckplatz. of your USB ports.

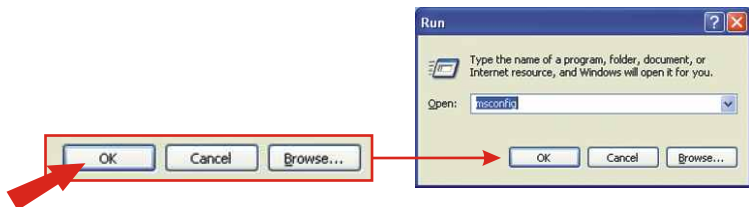


3. Deaktivierung der Bluetooth-Services für Windows XP SP2

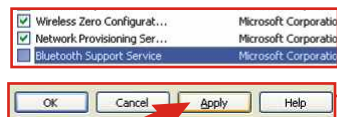
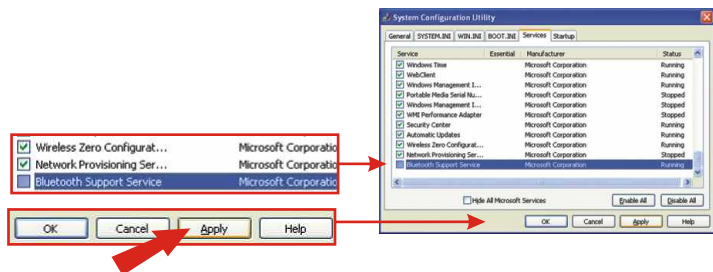
Benutzer von Windows XP SP1/2000/ME/98SE gehen bitte zu Abschnitt 4. **Installation der Treiber.**

Windows XP SP2

1. Klicken Sie auf **Start**, dann auf **Run** (Ausführen), tippen Sie **msconfig** ein und klicken Sie auf **OK**.



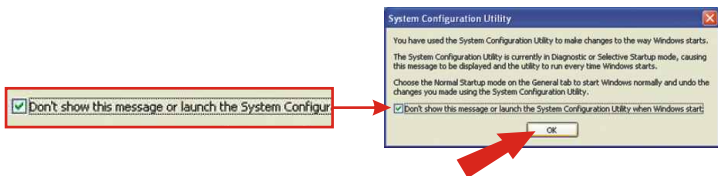
2. Klicken Sie auf die Registerkarte **Services** (Dienste) und entfernen Sie die Markierung bei **Bluetooth Support Service**. Klicken Sie auf **Apply** (Übernehmen) und anschließend auf **Close** (Schließen).



3. Klicken Sie auf **Restart** (Neustart).



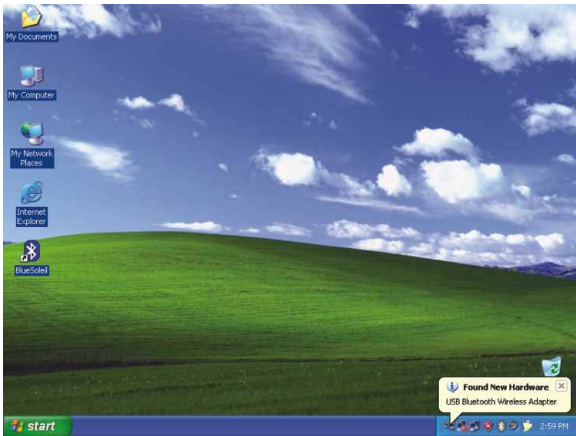
4. Nach dem Neustart Ihres Computers erscheint das Systemkonfigurationsprogramm. Markieren Sie **Don't show this message** (Diese Meldung nicht mehr anzeigen) und klicken Sie auf **OK**.



4. Installation der Treiber

Windows XP

1. Sobald Sie den TBW-101UB/TBW-102UB in einen USB-Steckplatz gesteckt haben, installiert Windows die Treiber automatisch. Gehen Sie bitte zum Abschnitt **5. Kopplung der Bluetooth-Geräte**.

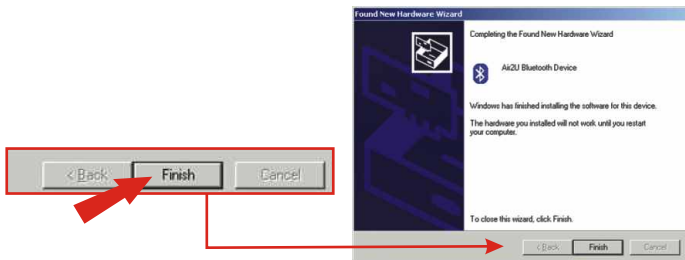


Windows 2000/ME/98SE

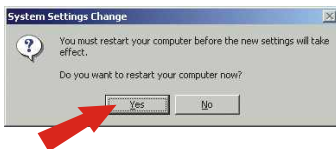
1. Klicken Sie auf **OK**.



2. Klicken Sie auf **Finish** (Fertigstellen).



3. Klicken Sie auf **Yes** (Ja), um Ihren Computer neu zu starten. Falls diese Anzeige nicht erscheint, starten Sie Ihren Computer bitte manuell neu.

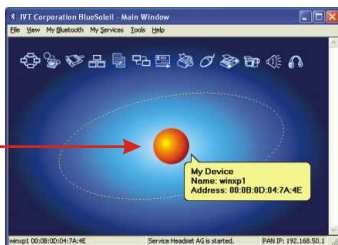
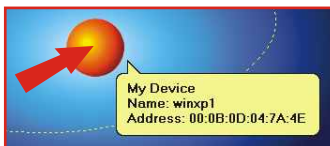


5. Kopplung der Bluetooth-Geräte

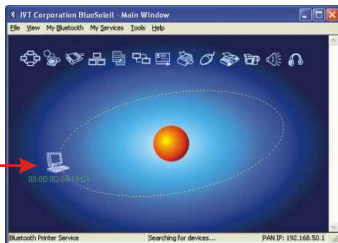
1. Doppelklicken Sie auf das Bluetooth-Symbol in der unteren rechten Ecke des Bildschirms.



2. Klicken Sie auf den orangefarbenen Ball, um die Suche nach Bluetooth-Geräten zu beginnen.



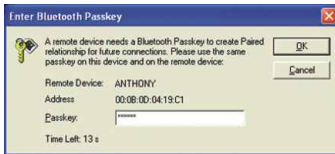
3. Doppelklicken Sie auf das Bluetooth-Gerät.



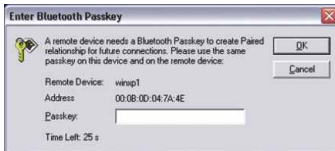
4. Alle verfügbaren Bluetooth-Geräte werden Gelb hervorgehoben. Doppelklicken Sie auf den Bluetooth-Dienst, den Sie aktivieren wollen. In unserem Beispiel wurde der Bluetooth-Dateiübertragungsdienst ausgewählt.



5. Der ausgewählte Computer wird aufgefordert, ein Kennwort zu senden. Dieses Kennwort kann aus Buchstaben und Zahlen bestehen. Achten Sie aber darauf, dass beide Bluetooth-Geräte das gleiche Kennwort benutzen. In unserem Beispiel lautet das Kennwort **123456**. Tippen Sie für beide Geräte **123456** ein.



← Computer 1

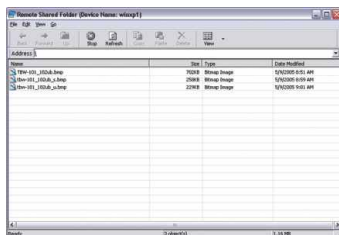


← Computer 2

6. Klicken Sie für beide Geräte auf **Yes** (Ja).



7. Nach der Kopplung der beiden Bluetooth-fähigen Computer erscheint eine Liste der gemeinsam genutzten Dateien. Laden Sie die ausgewählten Dateien herunter.



1. Puesta a punto para la instalación

Verificación de los contenidos del paquete

Verifique que su caja contiene todo lo que incluimos en ella:



Verificación del equipo

Antes de instalar el adaptador Bluetooth, debe comprobar que su PC tiene:

- Windows 98SE, ME, 2000 o XP instalado
- Un puerto USB 1.1 disponible
- Una unidad de CD-ROM

2. Instalación de la herramienta Bluetooth

Nota: Debe instalar el programa de la herramienta Bluetooth antes de instalar el adaptador USB Bluetooth.

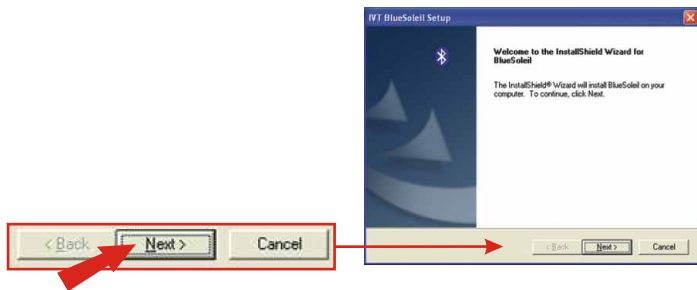
1. Encienda su PC.
2. Inserte el CD-ROM de la herramienta en su unidad de CD-ROM.



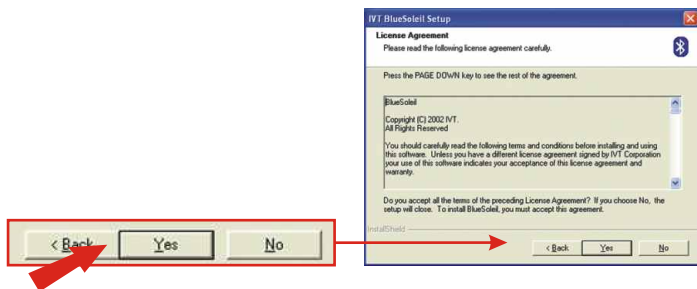
3. La función auto-ejecutable iniciará automáticamente el asistente de instalación del software. Si la función auto-ejecutable no se inicia automáticamente, por favor busque el CD de instalación para ir al archivo "Setup.exe". Haga doble clic en Auto-Run.exe para continuar.
4. Seleccione el idioma para esta instalación y luego haga clic en **OK**.



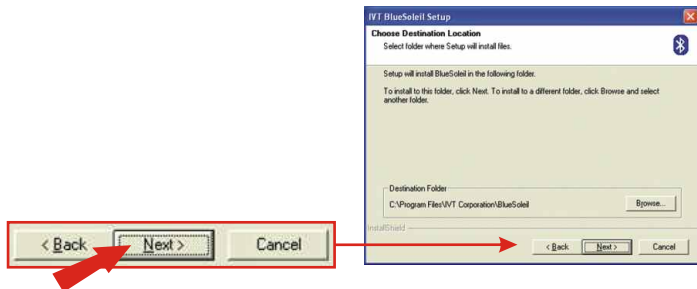
5. Haga clic en **Next** (Siguiente).



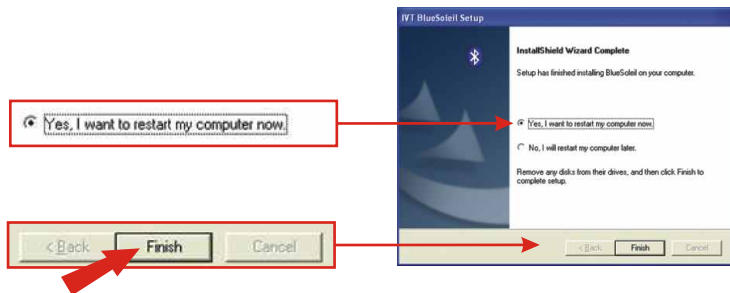
6. Haga clic en **Yes** (Sí).



7. Haga clic en **Next** (Siguiente).



8. Seleccione, **Yes, I want to restart my computer now** (Sí, deseo reiniciar mi PC ahora), y luego haga clic en **Finish** (Finalizar).



9. Tras reiniciar su PC, introduzca el TBW-101UB/TBW-102UB dentro de sus puertos USB.

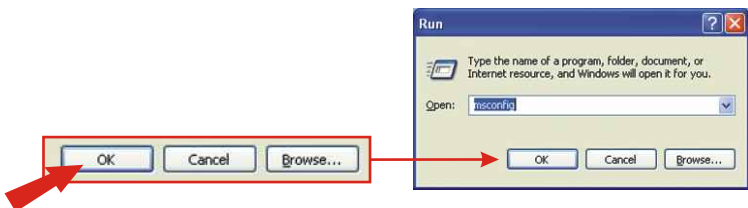


3. Desactivación de los Servicios Bluetooth para Windows XP SP2

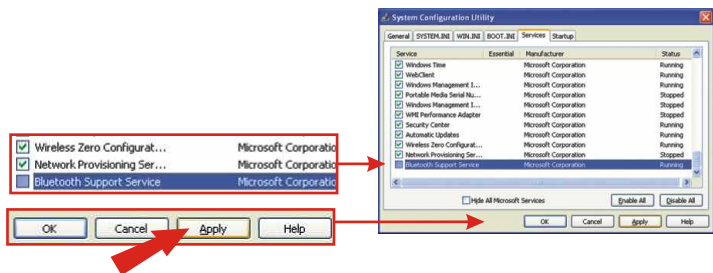
Para los usuarios de Windows XP SP1/2000/ME/98SE, vaya a la sección 4. **Instalación del Controlador.**

Windows XP SP2

1. Haga clic en **Start** (Inicio), luego pulse **Run** (Ejecutar), después escriba **msconfig** y haga clic en **OK**.



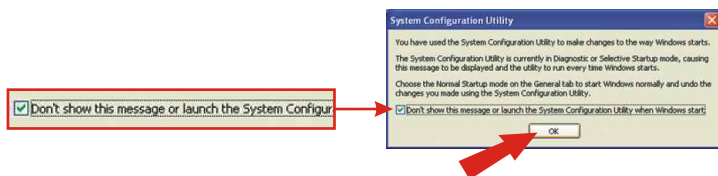
2. Haga clic en la pestaña de **Services** (Servicios) y desactive el **Bluetooth Support Service** (Servicio de soporte Bluetooth) por **Microsoft Corporation**. Haga clic en **Apply** (Aplicar) y luego en **Close** (Cerrar).



3. Haga clic en **Restart** (Reiniciar).



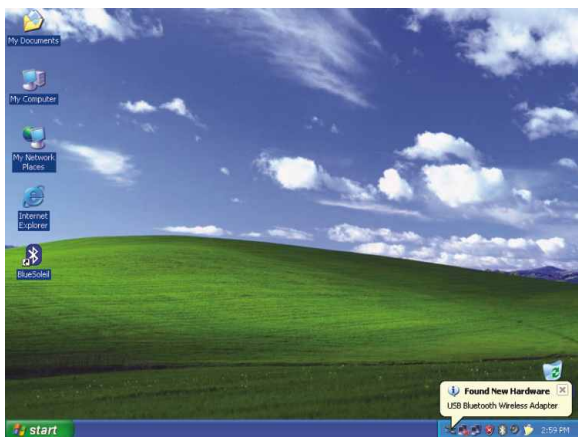
4. Tras reiniciar su PC, le aparecerá la Herramienta de Configuración del Sistema. Marque, **Don't show this message** (No mostrar ese mensaje de nuevo) y luego pulse **OK**.



4. Instalación del controlador

Windows XP

1. Tras introducir el TBW-101UB/TBW-102UB en la ranura USB, Windows instalará automáticamente sus controladores. Por favor vaya a la sección **5. Dispositivos de asociación o pairing Bluetooth**.

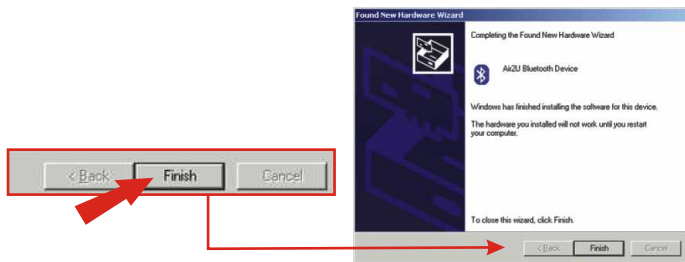


Windows 2000/ME/98SE

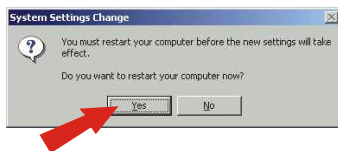
1. Haga clic en **OK**.



2. Haga clic en **Finish** (Finalizar).



3. Haga clic en **Yes** (Sí) para reiniciar. Si usted no recibe este mensaje, por favor reinicie su PC manualmente.

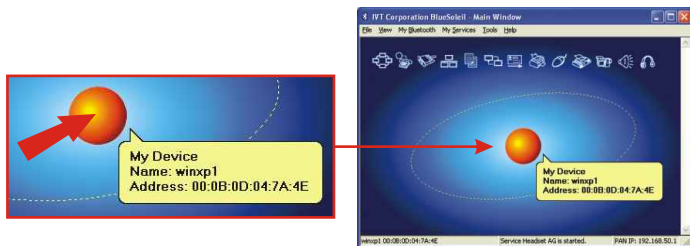


5. Dispositivos de asociación o pairing Bluetooth

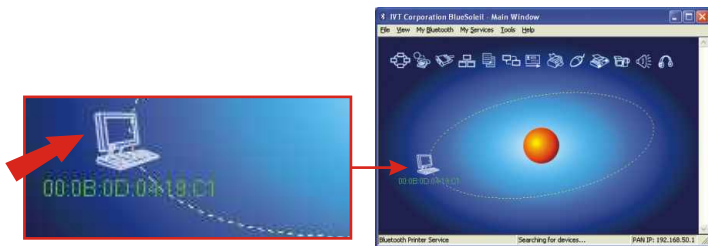
1. Haga doble clic en el icono Bluetooth ubicado en la esquina derecha inferior.



2. Haga clic en la bola naranja para buscar los dispositivos Bluetooth.



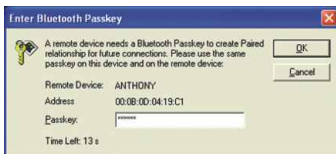
3. Haga doble clic en el dispositivo habilitado para Bluetooth.



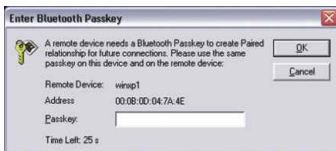
4. Todos los servicios Bluetooth están resaltados en amarillo para su conveniencia. Haga doble clic en el servicio Bluetooth que desea habilitar. En este ejemplo, se ha seleccionado el Servicio de Transferencia de Archivo Bluetooth.



5. El PC seleccionado le pedirá una contraseña. Esta contraseña puede ser desde letras hasta números. Sin embargo, asegúrese de que ambos dispositivos Bluetooth compartan la misma contraseña. En este ejemplo, la contraseña es **123456**. Escriba **123456** para ambos dispositivos.



← Computer 1

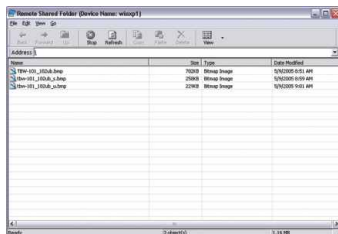


← Computer 2

6. Haga clic en **Yes** (Sí) para ambos dispositivos.



7. Tras asociar o pairing ambos PC habilitados para Bluetooth, le aparecerá una lista de archivos compartidos. Descargue cualquier archivo seleccionado.



Troubleshooting

Q1: If the Device Status indicates that the Bluetooth USB Adapter is not working properly, what should I do?

A1: Uninstall **Air2U Bluetooth Device** in **Device Manager**, and reinstall the Bluetooth utility.

Q2: How do I set up connections between Bluetooth devices?

A2: Refer to the User's Guide on the included CD-ROM or to TRENDnet's website for additional information.

Q3: How do I transfer files between my PC and my Cell Phone?

A3: You need to verify that your Cell Phone is "Bluetooth enhanced" and that the software for your phone allows file-transfers. If this is the case, refer to the User's Guide on the included CD-ROM or to TRENDnet's website for additional information.

Q4: What folder do I use to share files between Bluetooth devices?

A4: Double-click **My Documents**, double-click **Bluetooth**, and double-click **share**. All files located in the **share** folder can be transferred to other Bluetooth enabled devices.

Q5: I clicked the orange globe in the Bluetooth utility, but I still could not locate a Bluetooth device.

A5: Make sure that your Bluetooth devices are enabled, and that the TBW-101UB/TBW-102UB is connected to your computer. Then reboot all Bluetooth enabled devices and click the orange globe in the Bluetooth utility.

Q6: I cannot pair two Bluetooth enabled computers after typing a password. What do I do?

A6: Try using a simpler password with 3 characters such as 123, and see if you are able to connect to another Bluetooth enabled computer.

Certifications

This equipment has been tested and found to comply with FCC and CE Rules. Operation is subject to the following two conditions:

- (1) This device may not cause harmful interference.
- (2) This device must accept any interference received.
Including interference that may cause undesired operation.

NOTE: THE MANUFACTURER IS NOT RESPONSIBLE FOR ANY RADIO OR TV INTERFERENCE CAUSED BY UNAUTHORIZED MODIFICATIONS TO THIS EQUIPMENT. SUCH MODIFICATIONS COULD VOID THE USER'S AUTHORITY TO OPERATE THE EQUIPMENT.





TRENDware, USA

What's Next in Networking

Product Warranty Registration

Please take a moment to register your product online.
Go to TRENDware's website at <http://www.TRENDNET.com>

TRENDnet Technical Support

US/Canada Support Center

Contact

Telephone: 1(310) 626-6252

Fax: 1(310) 626-6267

Email: support@trendnet.com

Tech Support Hours

7:30am - 6:00pm Pacific Standard Time

Monday - Friday

European Support Center

Contact**Telephone**

Deutsch : +49 (0) 6331 / 268-460

Français : +49 (0) 6331 / 268-461

Español : +49 (0) 6331 / 268-462

English : +49 (0) 6331 / 268-463

Italiano : +49 (0) 6331 / 268-464

Dutch : +49 (0) 6331 / 268-465

Fax: +49 (0) 6331 / 268-466

Tech Support Hours

8:00am - 6:00pm Middle European Time

Monday - Friday

TRENDware International, Inc.

3135 Kashiwa Street, Torrance, CA 90505

<http://www.TRENDNET.com>