

TITLE: SPZB32W1A1.1 COMPONENTS LAYOUT

1. PURPOSE

This document template can be used for :

COMMERCIAL PRODUCT CODE	FINISHED GOOD CODE	ASSY & TEST PLANT	RAW LINE CODE	TECHNICAL CODE
SPZB32W1A1.1	SPZB32W1A1.1\$	6483 (Bouskoura)	HBIC*ZBIC027	HBIC ZBIC027

2. SCOPE

Site : Assy & Test Plant. (See Table)

Operation : Component assembly for ZIGBEE STM32W CLASS 1

Product : SPZB32W1A1.1.

PCB ref.: PC06A

Area : Manufacturing.

3. REFERENCE DOCUMENTS

3.1 ADCS reference documents

For ADCS references see "REFERENCES" on Cover page C.

4. DEFINITIONS

- **PCB** : Printed Circuit Board.
- **SMD** : Surface Mounting Device.

5. GENERAL: N/A

6. SAFETY REQUIREMENTS: N/A

7. PROCEDURE

This document is needed to show the components layout to be soldered onto PCB of the product in subject with possible remarks and/or assembly sequence useful to Manufacturing plant.

Refer to next page(s).

8. QUALITY REQUIREMENTS: N/A

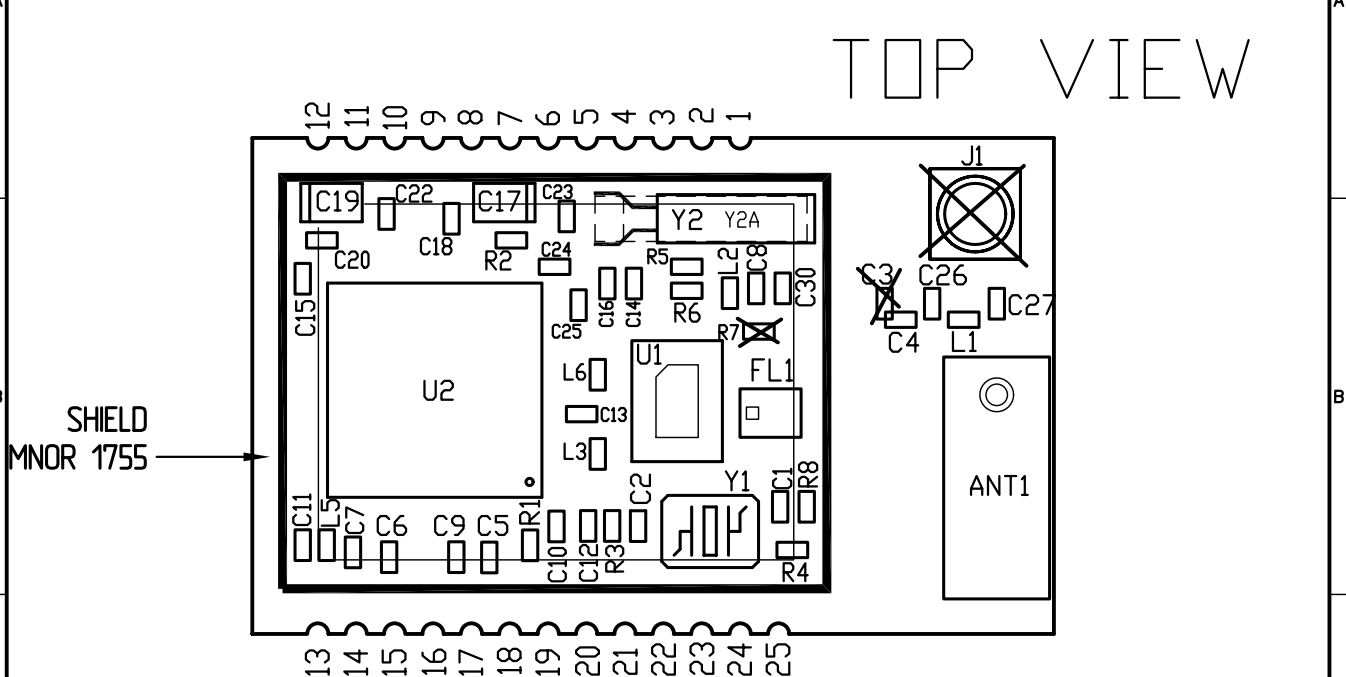
9. ENVIRONMENTAL / ECOLOGICAL REQUIREMENTS

(STMicroelectronics recommends viewing documents on the screen rather than printing to limit paper consumption.)

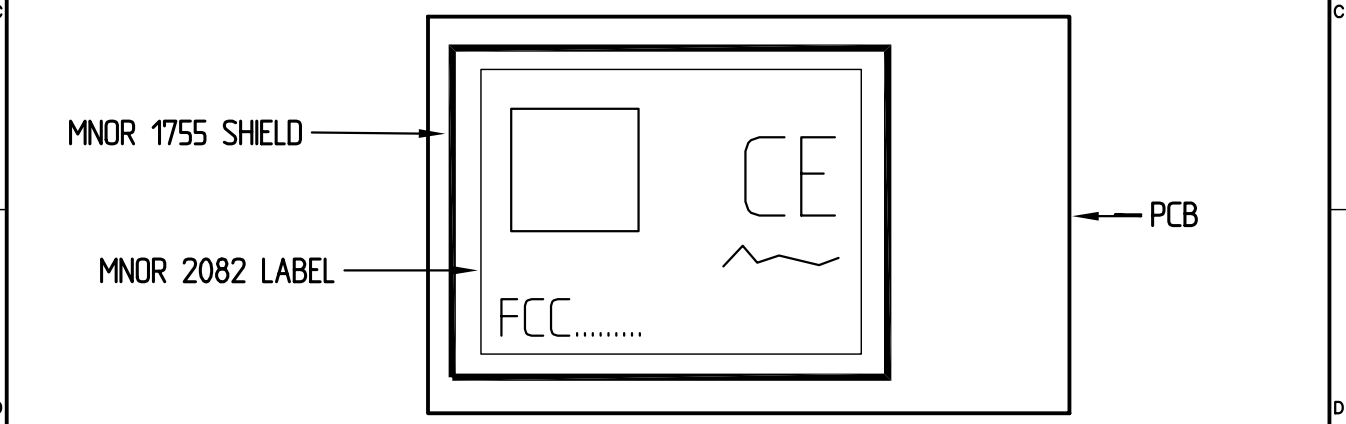
Use of this form is settled by ADCS procedure No.7611705).

8337038A.dwg


REV.	DATE	DESCRIPTION OF REVISION AND AUTHOR
A	15.06.11	FIRST ISSUE GALLI



COMPONENTS with X ARE NOT MOUNTED.



- 1) Solder the components on p.c.b. using Nitrogen Atmosphere Furnace.
- 2) Print the MNOR 2082 LABEL (following the instructions of the ADCS 8337049 drawing) and stick it on the top of the shield.
- 3) Execute the functional test.
- 4) The assembling must be compliant with IPC norms, ref. to "IPC A 610 class".

		COMPONENTS LAYOUT		Doc. ref. SPZB32W1A1.1	
Subsystem Product Group		(PC06A)		Drawing No. 8337038A	
Page size A4	Material	Finish		Code	
Colour	ROUGHNESS (um) Machine finish ✓ 125 / 32 / 0.8 / 0.2 <input type="checkbox"/> <input type="checkbox"/> <input type="checkbox"/> <input type="checkbox"/>	TOLERANCES (except where otherwise stated) LINEAL MEASURES No decimal = ±1mm .X = ±0.2mm .XXX = ±0.05mm .XX = ±0.1mm .XXXX = ±0.025mm	Scale 4 : 1	Drawn by	
ALL DIMENSIONS ARE IN mm (inch). REMOVE ALL BURRS AND SHARP EDGES.		ANG. MEASURES No decimal = ±1° X = ±0°30'	Passed by	Approved by	
Date		Sheet of 1 1		Date	

Copyright STMicroelectronics. Unauthorized reproduction and communication are strictly prohibited.