

12
11
10
9
8
7
6
5
4

1
2
3
4
5
6
7
8
9
10
11
12
13
14
15
16
17
18
19
20
21
22

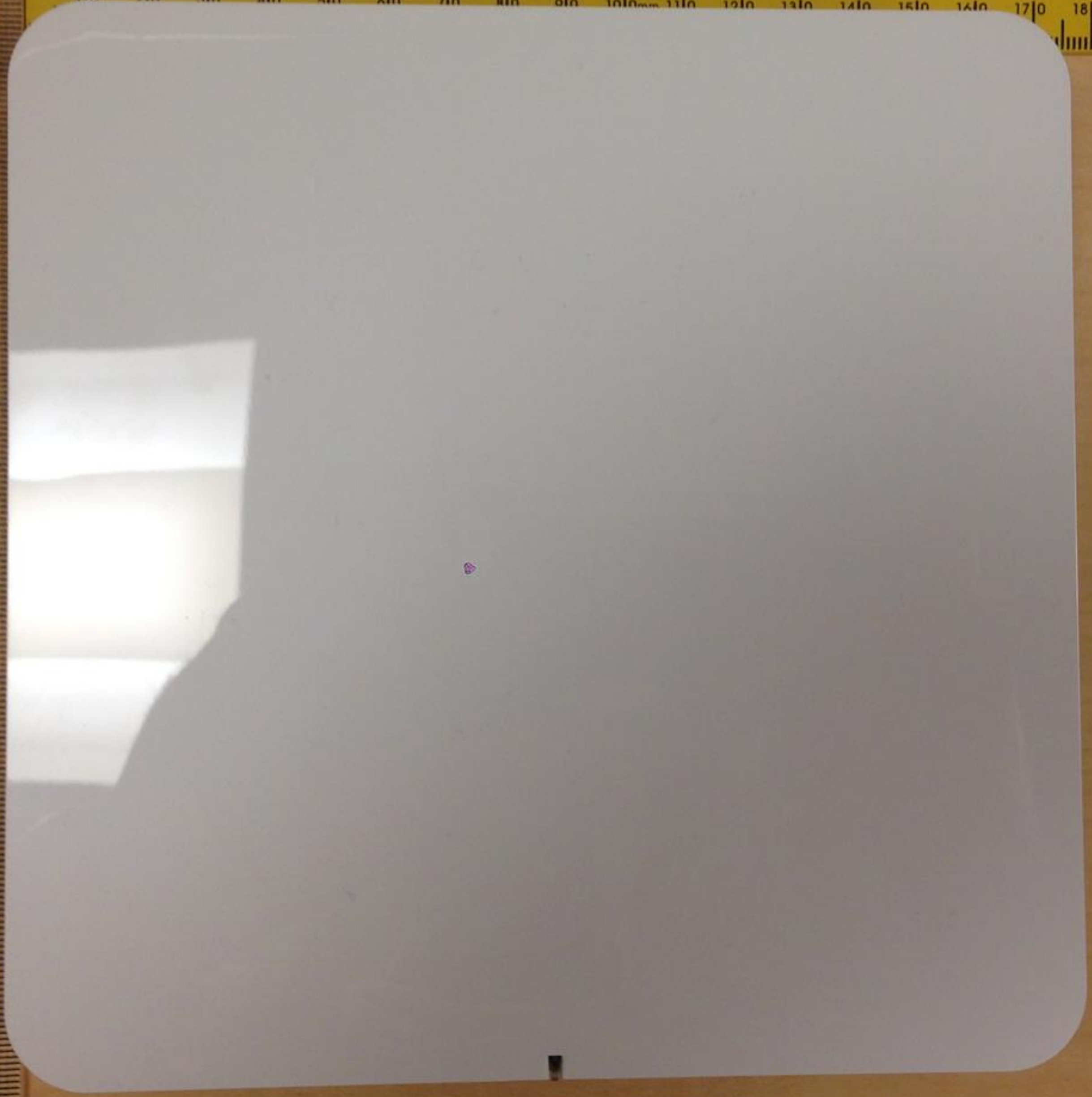
8THS

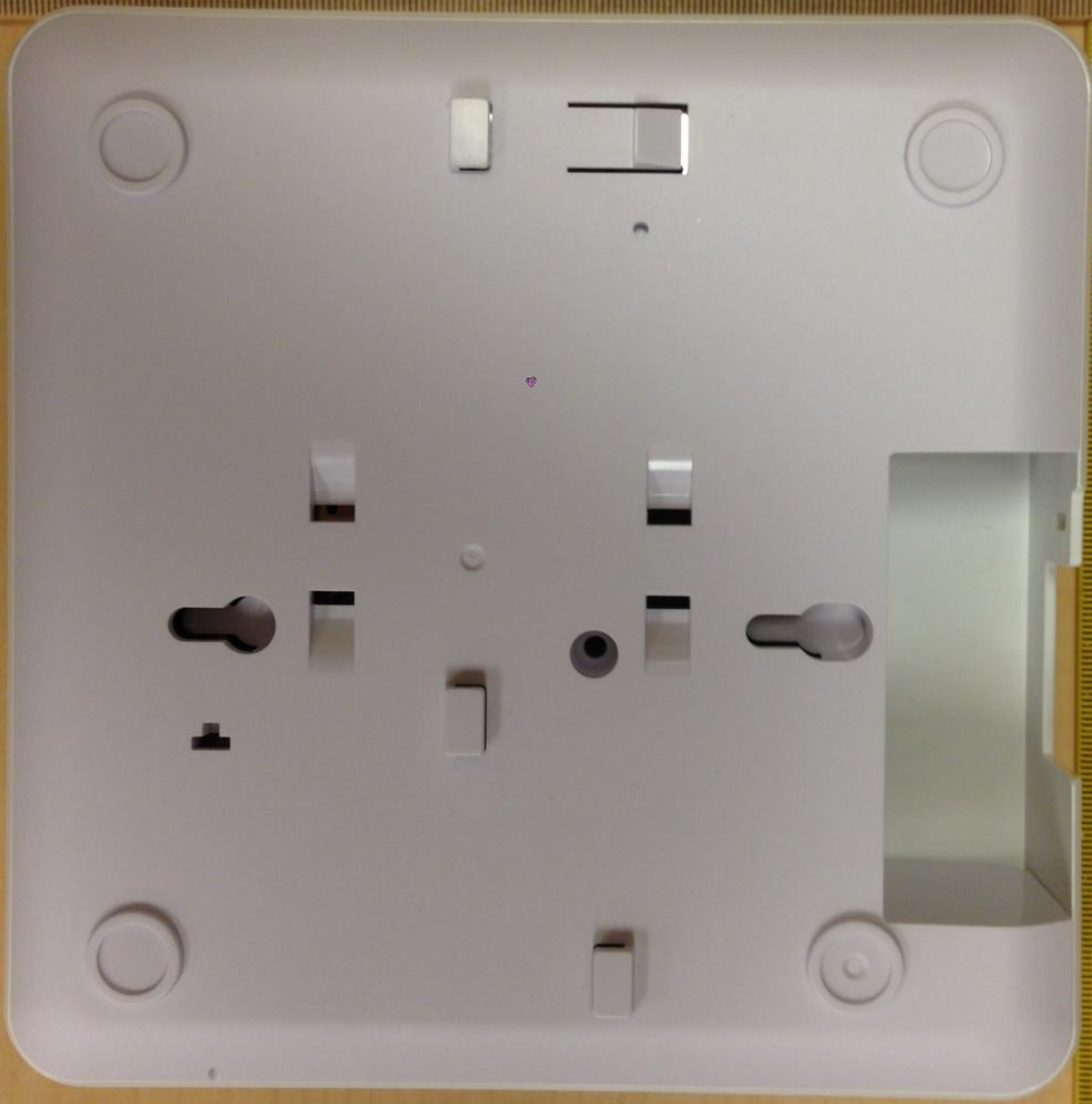
To read length in centimeters, omit the final zero after the index line. To read length in millimeters, include the final zero.

LINEAR METRIC UNITS AND SYMBOLS
100 centimeters (cm) = 1 meter (m)
1000 millimeters (mm) = 1 meter (m)

CONVERSION
100 centimeters (cm) = 1 meter (m)
1000 meters (m) = 1 kilometer (km)
inches x 25.4 = millimeters
inches x 2.54 = centimeters
feet x 30.48 = centimeters

10 20 30 40 50 60 70 80 90 100 110 120 130 140 150 160 170 180 190 200 210 220 230 240 250 260





To read length in centimeters, omit the final zero after the index line. To read length in millimeters, include the final zero.

LINEAR METRIC UNITS AND SYMBOLS
1000 millimeters (mm) = 1 meter (m)

100 centimeters (cm) = 1 meter (m)
1000 meters (m) = 1 kilometer (km)



RESET

PoE

12VDC



Xclaim

PWR





