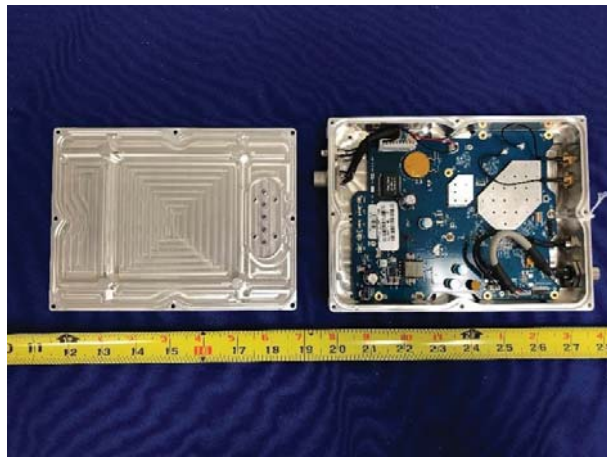
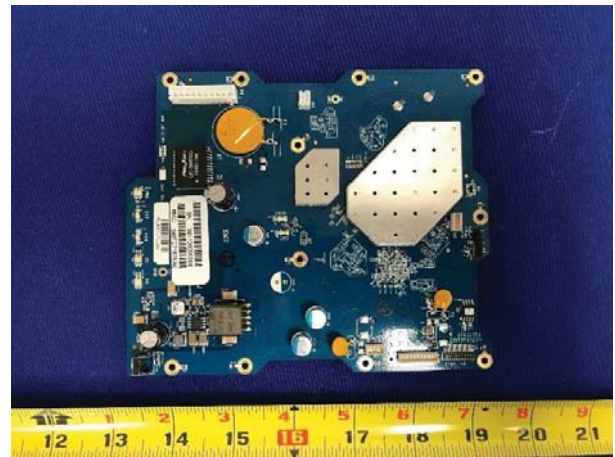


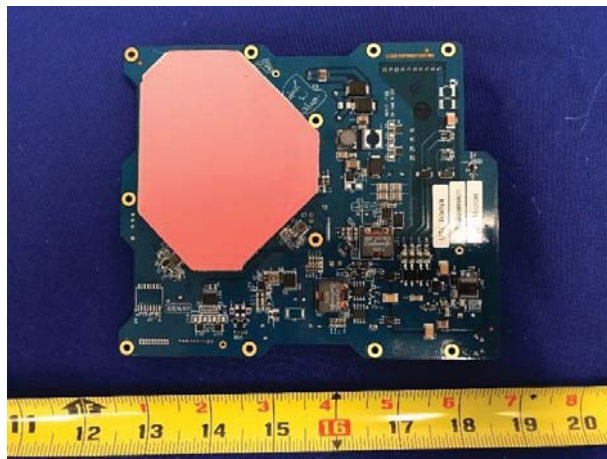
EUT Photos - Internal



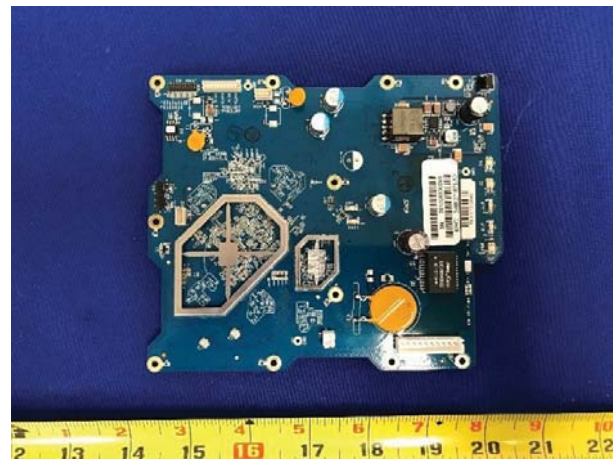
EUT Case off View



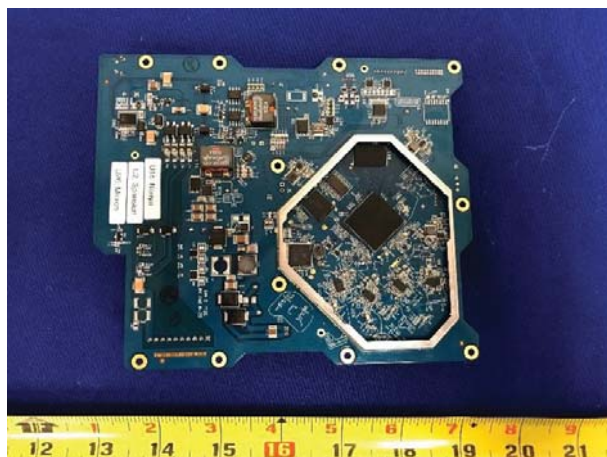
Modem Board Top View with shielding



Modem Board Bottom View with shielding




Modem Board Top View without shielding



Modem Board Bottom View without shielding



Antenna Top View

 A photograph of the bottom view of a rectangular antenna. The antenna is a light-colored, possibly aluminum, plate with several small circular holes. Two white cables are attached to the top corners. Two labels are present: a white one on the left with technical specifications and a yellow one on the right with a 'DANGER' warning. A yellow ruler is placed below the antenna for scale, showing measurements in inches and centimeters. The background is a dark blue textured surface.	
Antenna Bottom View	