

---

## 16 Exhibit C - EUT Photographs

---

### 16.1 EUT – Top View



### 16.2 EUT-Bottom View

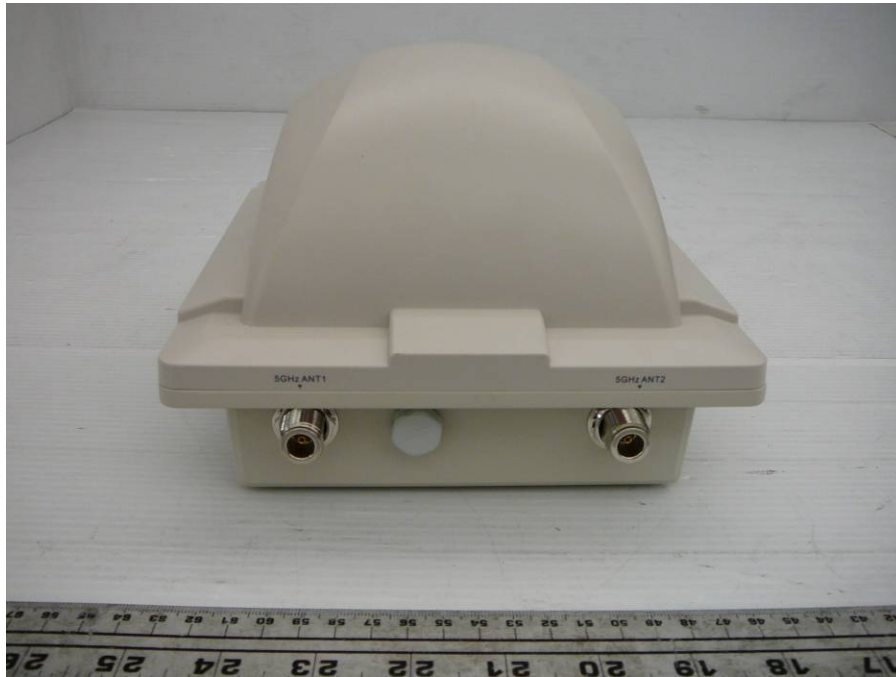


---

### 16.3 EUT-Port View



### 16.4 EUT-Antenna Port View



---

---

**16.5 EUT – 6 dBi External Antenna**



**16.6 EUT – 16 dBi External Antenna View**



**16.7 EUT – 23 dBi External Antenna View**

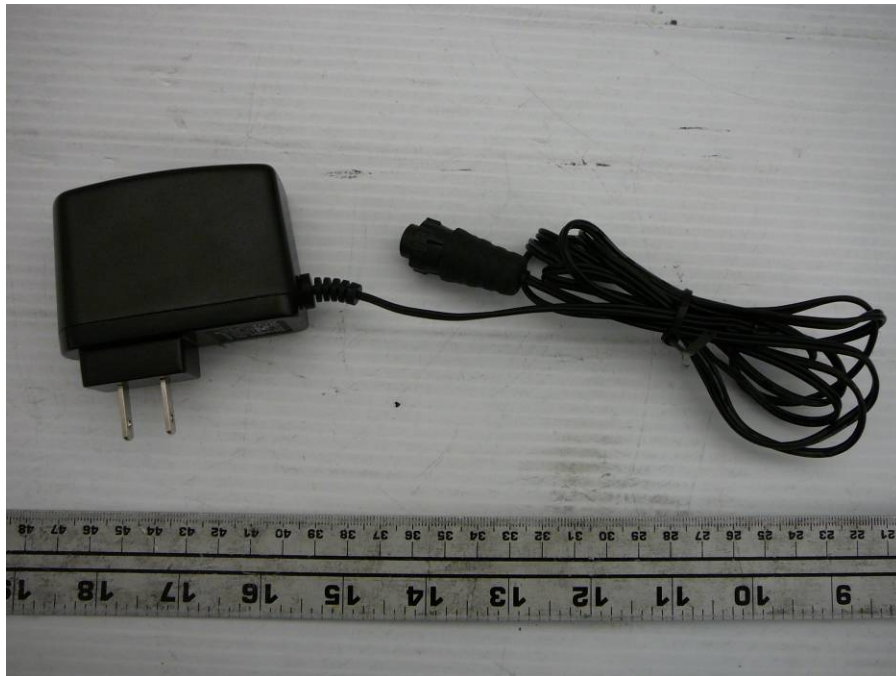


---

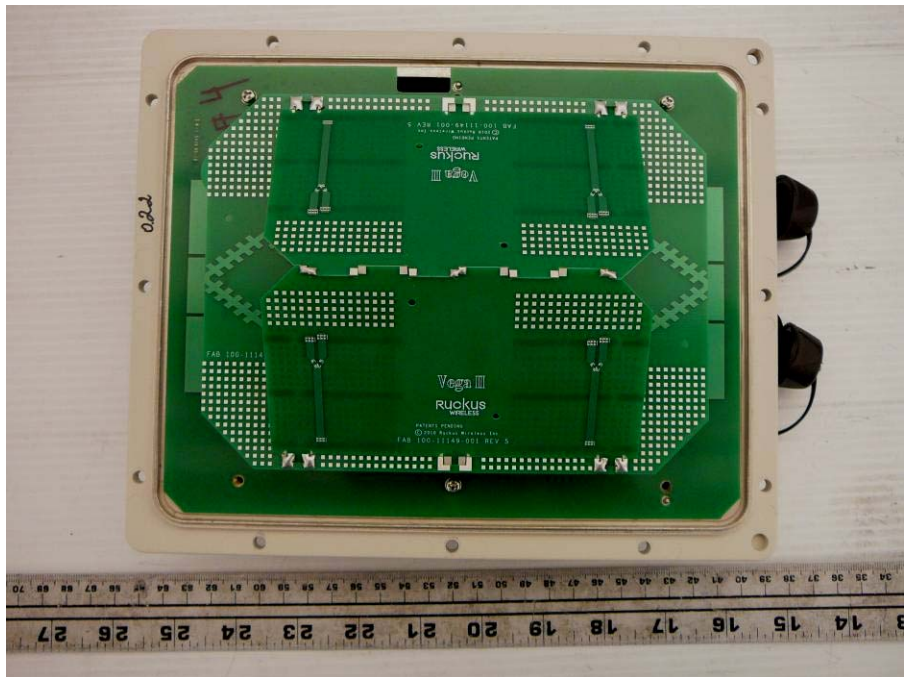
## 16.8 EUT – Adapter for POE



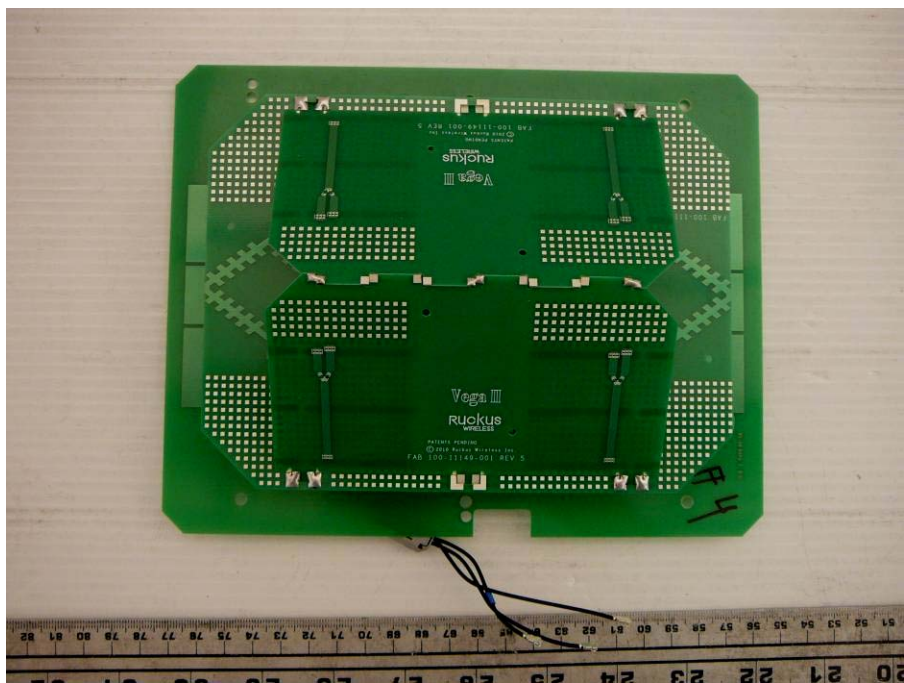
## 16.9 EUT – AC/DC Power Adapter



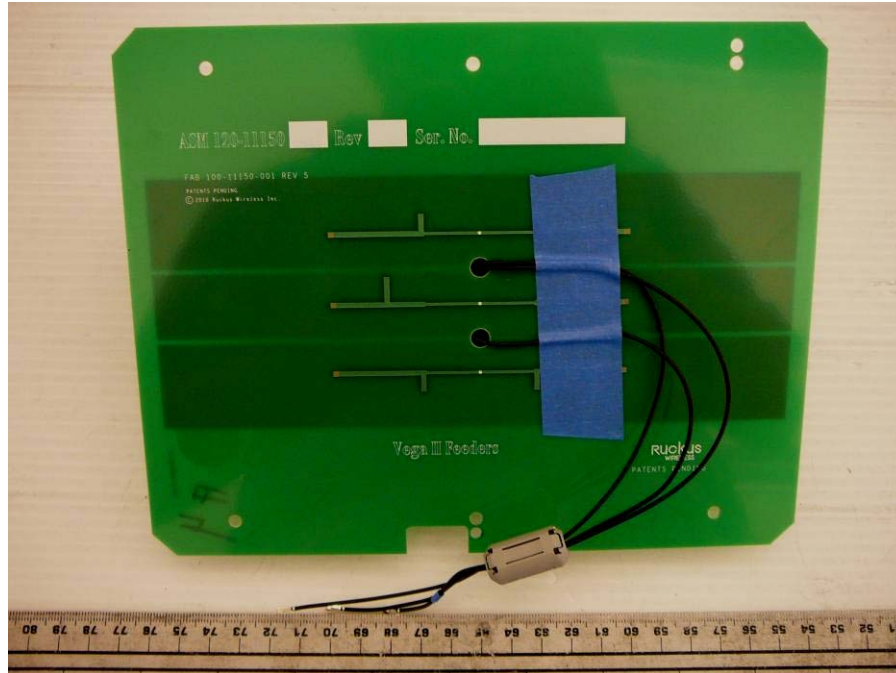
### 16.10 EUT- Cover off View



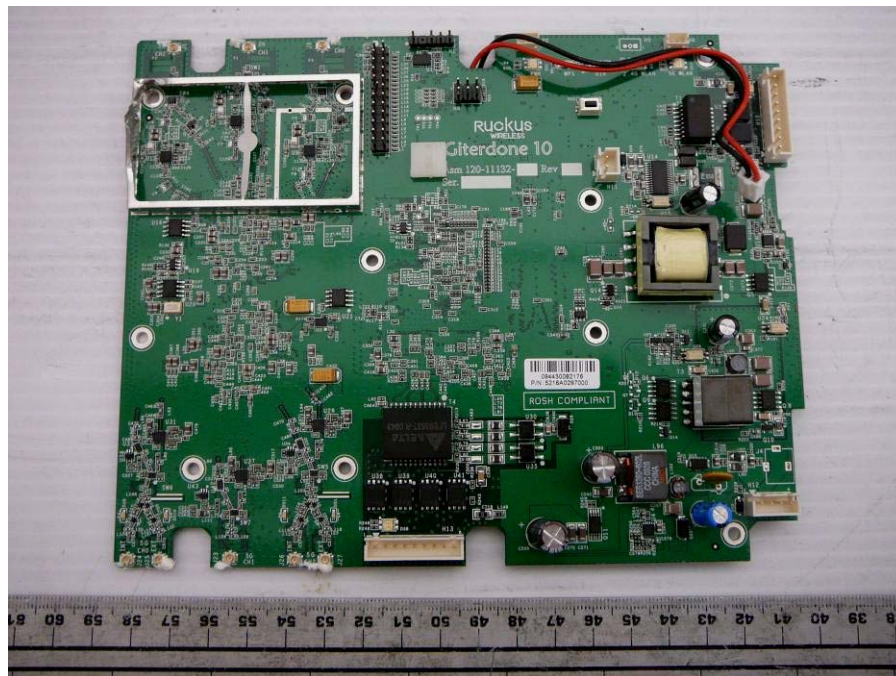
### 16.11 EUT- 8 dBi Internal Antenna Board Top View



## 16.12 EUT - - 8 dBi Internal Antenna Board Solder View

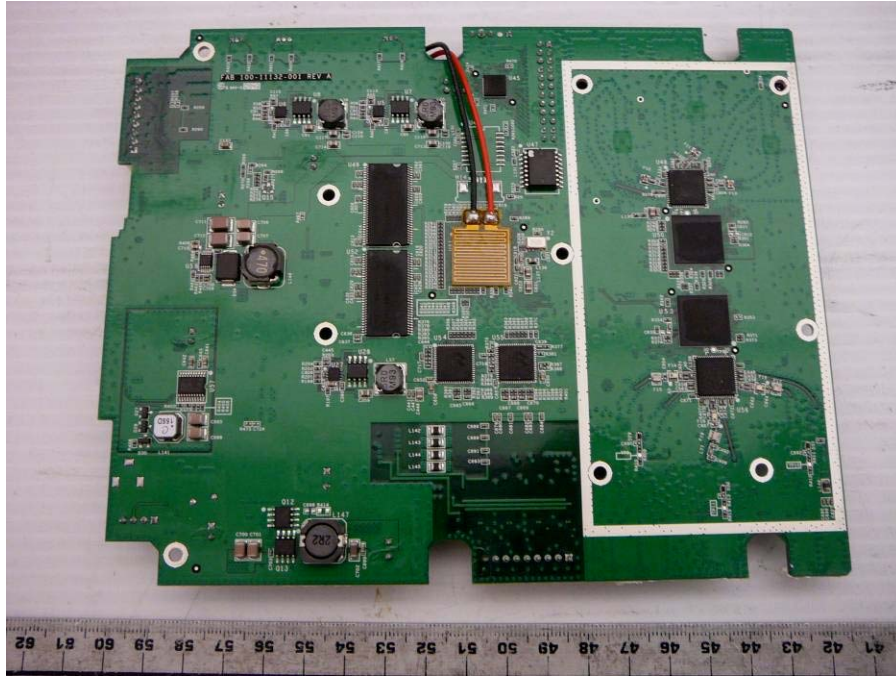


## 16.13 EUT- Main Board Top View



---

**16.14 EUT – Main Board Solder View**



**\*\*\*\*\* END OF REPORT \*\*\*\*\***