



# FCC SAR TEST REPORT

**FCC ID** : S9E-EM7565  
**Equipment** : Rugged Handheld Computer  
**Brand Name** : Trimble  
**Model Name** : 121900  
**Applicant** : Trimble Inc.  
5475 Kellenburger Rd., Dayton, Ohio, United States 45424  
**Manufacturer** : Trimble Inc.  
5475 Kellenburger Rd., Dayton, Ohio, United States 45424  
**Standard** : FCC 47 CFR Part 2 (2.1093)

The product was received on Sep. 07, 2020 and testing was started from Sep. 21, 2020 and completed on Sep. 23, 2020. We, SPORTON INTERNATIONAL INC., would like to declare that the tested sample provide by manufacturer and the test data has been evaluated in accordance with the test procedures given in 47 CFR Part 2.1093 and FCC KDB and has been pass the FCC requirement.

The test results in this report apply exclusively to the tested model / sample. Without written approval of SPORTON INTERNATIONAL INC. EMC & Wireless Communications Laboratory, the test report shall not be reproduced except in full.

Approved by: Cona Huang / Deputy Manager

**SPORTON INTERNATIONAL INC. EMC & Wireless Communications Laboratory**  
No. 52, Huaya 1st Rd., Guishan Dist., Taoyuan City, Taiwan (R.O.C.)



**Table of Contents**

**1. Statement of Compliance .....4**

**2. Guidance Applied.....4**

**3. Equipment Under Test (EUT) Information.....5**

    3.1 General Information .....5

    3.2 General LTE SAR Test and Reporting Considerations .....6

**4. RF Exposure Limits .....9**

    4.1 Uncontrolled Environment.....9

    4.2 Controlled Environment.....9

**5. Specific Absorption Rate (SAR).....10**

    5.1 Introduction .....10

    5.2 SAR Definition.....10

**6. System Description and Setup .....11**

    6.1 Test Site Location.....11

    6.2 E-Field Probe .....12

    6.3 Data Acquisition Electronics (DAE) .....12

    6.4 Phantom.....13

    6.5 Device Holder .....14

**7. Measurement Procedures .....15**

    7.1 Spatial Peak SAR Evaluation.....15

    7.2 Power Reference Measurement.....16

    7.3 Area Scan .....16

    7.4 Zoom Scan.....17

    7.5 Volume Scan Procedures.....17

    7.6 Power Drift Monitoring.....17

**8. Test Equipment List.....18**

**9. System Verification .....19**

    9.1 Tissue Simulating Liquids.....19

    9.2 Tissue Verification .....20

    9.3 System Performance Check Results.....21

**10. UMTS/LTE Output Power (Unit: dBm) .....22**

**11. Antenna Location .....50**

**12. SAR Test Results .....51**

    12.1 Body SAR .....53

    12.2 Extremity SAR.....56

**13. Simultaneous Transmission Analysis.....57**

    13.1 Body Exposure Conditions .....58

    13.2 Extremity Exposure Conditions .....58

**14. Uncertainty Assessment .....59**

**15. References.....59**

**Appendix A. Plots of System Performance Check**

**Appendix B. Plots of High SAR Measurement**

**Appendix C. DASy Calibration Certificate**

**Appendix D. Test Setup Photos**



### History of this test report

Report No.	Version	Description	Issued Date
FA081931-01	01	Initial issue of report	Oct. 30, 2020



1. Statement of Compliance

The maximum results of Specific Absorption Rate (SAR) found during testing for Trimble Inc., Rugged Handheld Computer, 121900, are as follows.

Table with columns: Equipment Class, Frequency Band, Highest SAR Summary (Body, Extremity), and Highest Simultaneous Transmission (1g SAR, 10g SAR). Rows include WCDMA II, WCDMA IV, WCDMA V, LTE Bands 2, 7, 12, 13, 5/26, 41, 4/66, and Date of Testing: 2020/09/21 ~ 2020/9/23.

Sporton Lab is accredited to ISO 17025 by Taiwan Accreditation Foundation (TAF code: 1190) and the FCC designation No. TW1190 under the FCC 2.948(e) by Mutual Recognition Agreement (MRA) in FCC test.(FCC). This device is in compliance with Specific Absorption Rate (SAR) for general population/uncontrolled exposure limits (1.6 W/kg for Partial-Body 1g SAR, 4.0 W/kg for Product Specific 10g SAR) specified in FCC 47 CFR part 2 (2.1093) and ANSI/IEEE C95.1-1992, and had been tested in accordance with the measurement methods and procedures specified in IEEE 1528-2013 and FCC KDB publications

Reviewed by: Jason Wang
Report Producer: Daisy Peng

2. Guidance Applied

The Specific Absorption Rate (SAR) testing specification, method, and procedure for this device is in accordance with the following standards, the below KDB standard may not including in the TAF code without accreditation.

- FCC 47 CFR Part 2 (2.1093)
ANSI/IEEE C95.1-1992
IEEE 1528-2013
FCC KDB 865664 D01 SAR Measurement 100 MHz to 6 GHz v01r04
FCC KDB 865664 D02 SAR Reporting v01r02
FCC KDB 447498 D01 General RF Exposure Guidance v06
FCC KDB 941225 D01 3G SAR Procedures v03r01
FCC KDB 941225 D05 SAR for LTE Devices v02r05
FCC KDB 941225 D05A Rel.10 LTE SAR Test Guidance v01r02



### 3. Equipment Under Test (EUT) Information

#### 3.1 General Information

Product Feature & Specification	
Equipment Name	Rugged Handheld Computer
Brand Name	Trimble
Model Name	121900
FCC ID	S9E-EM7565
Wireless Technology and Frequency Range	WCDMA Band II: 1850 MHz ~ 1910 MHz WCDMA Band IV: 1710 MHz ~ 1755 MHz WCDMA Band V: 824 MHz ~ 849 MHz LTE Band 2: 1850 MHz ~ 1910 MHz LTE Band 4: 1710 MHz ~ 1755 MHz LTE Band 5: 824 MHz ~ 849 MHz LTE Band 7: 2500 MHz ~ 2570 MHz LTE Band 12: 699 MHz ~ 716 MHz LTE Band 13: 777 MHz ~ 787 MHz LTE Band 26: 814 MHz ~ 849 MHz LTE Band 41: 2496 MHz ~ 2690 MHz LTE Band 66: 1710 MHz ~ 1780 MHz WLAN 2.4GHz Band: 2400 MHz ~ 2483.5 MHz WLAN 5.2GHz Band: 5150 MHz ~ 5250 MHz WLAN 5.3GHz Band: 5250 MHz ~ 5350 MHz WLAN 5.6GHz Band: 5470 MHz ~ 5725 MHz WLAN 5.8GHz Band: 5725 MHz ~ 5825 MHz Bluetooth: 2400 MHz ~ 2483.5 MHz
Mode	RMC/AMR 12.2Kbps HSDPA HSUPA LTE: QPSK, 16QAM, 64QAM WLAN: 802.11a/b/g/n/ac HT20/HT40/VHT20/VHT40/VHT80 Bluetooth BR/EDR/LE
EUT Stage	Identical Prototype
<b>Remark:</b>	
1. WLAN/Bluetooth power and WLAN SAR testing data, which can be referred to Sporton FCC SAR Test Report, FCC:ID: S9E121900, Report No.: FA081931 and these results are used simultaneous transmission analysis.	



**3.2 General LTE SAR Test and Reporting Considerations**

Summarized necessary items addressed in KDB 941225 D05 v02r05																																																															
FCC ID	S9E-EM7565																																																														
Equipment Name	Rugged Handheld Computer																																																														
Operating Frequency Range of each LTE transmission band	LTE Band 2: 1850 MHz ~ 1910 MHz LTE Band 4: 1710 MHz ~ 1755 MHz LTE Band 5: 824 MHz ~ 849 MHz LTE Band 7: 2500 MHz ~ 2570 MHz LTE Band 12: 699 MHz ~ 716 MHz LTE Band 13: 777 MHz ~ 787 MHz LTE Band 26: 814 MHz ~ 849 MHz LTE Band 41: 2496 MHz ~ 2690 MHz LTE Band 66: 1710 MHz ~ 1780 MHz																																																														
Channel Bandwidth	LTE Band 02: 1.4MHz, 3MHz, 5MHz, 10MHz, 15MHz, 20MHz LTE Band 04: 1.4MHz, 3MHz, 5MHz, 10MHz, 15MHz, 20MHz LTE Band 05: 1.4MHz, 3MHz, 5MHz, 10MHz LTE Band 07: 5MHz, 10MHz, 15MHz, 20MHz LTE Band 12: 1.4MHz, 3MHz, 5MHz, 10MHz LTE Band 13: 5MHz, 10MHz LTE Band 26: 1.4MHz, 3MHz, 5MHz, 10MHz, 15MHz LTE Band 41: 5MHz, 10MHz, 15MHz, 20MHz LTE Band 66: 1.4MHz, 3MHz, 5MHz, 10MHz, 15MHz, 20MHz																																																														
uplink modulations used	QPSK / 16QAM / 64QAM																																																														
LTE Voice / Data requirements	Data only																																																														
LTE MPR permanently built-in by design	<p><b>Table 6.2.3-1: Maximum Power Reduction (MPR) for Power Class 1, 2 and 3</b></p> <table border="1"> <thead> <tr> <th rowspan="2">Modulation</th> <th colspan="6">Channel bandwidth / Transmission bandwidth (N<sub>RB</sub>)</th> <th rowspan="2">MPR (dB)</th> </tr> <tr> <th>1.4 MHz</th> <th>3.0 MHz</th> <th>5 MHz</th> <th>10 MHz</th> <th>15 MHz</th> <th>20 MHz</th> </tr> </thead> <tbody> <tr> <td>QPSK</td> <td>&gt; 5</td> <td>&gt; 4</td> <td>&gt; 8</td> <td>&gt; 12</td> <td>&gt; 16</td> <td>&gt; 18</td> <td>≤ 1</td> </tr> <tr> <td>16 QAM</td> <td>≤ 5</td> <td>≤ 4</td> <td>≤ 8</td> <td>≤ 12</td> <td>≤ 16</td> <td>≤ 18</td> <td>≤ 1</td> </tr> <tr> <td>16 QAM</td> <td>&gt; 5</td> <td>&gt; 4</td> <td>&gt; 8</td> <td>&gt; 12</td> <td>&gt; 16</td> <td>&gt; 18</td> <td>≤ 2</td> </tr> <tr> <td>64 QAM</td> <td>≤ 5</td> <td>≤ 4</td> <td>≤ 8</td> <td>≤ 12</td> <td>≤ 16</td> <td>≤ 18</td> <td>≤ 2</td> </tr> <tr> <td>64 QAM</td> <td>&gt; 5</td> <td>&gt; 4</td> <td>&gt; 8</td> <td>&gt; 12</td> <td>&gt; 16</td> <td>&gt; 18</td> <td>≤ 3</td> </tr> <tr> <td>256 QAM</td> <td colspan="6">≥ 1</td> <td>≤ 5</td> </tr> </tbody> </table>	Modulation	Channel bandwidth / Transmission bandwidth (N <sub>RB</sub> )						MPR (dB)	1.4 MHz	3.0 MHz	5 MHz	10 MHz	15 MHz	20 MHz	QPSK	> 5	> 4	> 8	> 12	> 16	> 18	≤ 1	16 QAM	≤ 5	≤ 4	≤ 8	≤ 12	≤ 16	≤ 18	≤ 1	16 QAM	> 5	> 4	> 8	> 12	> 16	> 18	≤ 2	64 QAM	≤ 5	≤ 4	≤ 8	≤ 12	≤ 16	≤ 18	≤ 2	64 QAM	> 5	> 4	> 8	> 12	> 16	> 18	≤ 3	256 QAM	≥ 1						≤ 5
Modulation	Channel bandwidth / Transmission bandwidth (N <sub>RB</sub> )						MPR (dB)																																																								
	1.4 MHz	3.0 MHz	5 MHz	10 MHz	15 MHz	20 MHz																																																									
QPSK	> 5	> 4	> 8	> 12	> 16	> 18	≤ 1																																																								
16 QAM	≤ 5	≤ 4	≤ 8	≤ 12	≤ 16	≤ 18	≤ 1																																																								
16 QAM	> 5	> 4	> 8	> 12	> 16	> 18	≤ 2																																																								
64 QAM	≤ 5	≤ 4	≤ 8	≤ 12	≤ 16	≤ 18	≤ 2																																																								
64 QAM	> 5	> 4	> 8	> 12	> 16	> 18	≤ 3																																																								
256 QAM	≥ 1						≤ 5																																																								
LTE A-MPR	In the base station simulator configuration, Network Setting value is set to NS_01 to disable A-MPR during SAR testing and the LTE SAR tests was transmitting on all TTI frames (Maximum TTI)																																																														
Spectrum plots for RB configuration	A properly configured base station simulator was used for the SAR and power measurement; therefore, spectrum plots for each RB allocation and offset configuration are not included in the SAR report.																																																														
LTE Carrier Aggregation Combinations	Intra-Band possible combinations and the detail power measurement please referred to section 10.																																																														
LTE Carrier Aggregation Additional Information	This device supports LTE Carrier Aggregation (CA) in the uplink for LTE B7/B41 with two component carriers in the uplink. SAR Measurements and conducted powers were evaluated per FCC Guidance.																																																														



Transmission (H, M, L) channel numbers and frequencies in each LTE band													
LTE Band 2													
	Bandwidth 1.4 MHz		Bandwidth 3 MHz		Bandwidth 5 MHz		Bandwidth 10 MHz		Bandwidth 15 MHz		Bandwidth 20 MHz		
	Ch. #	Freq. (MHz)	Ch. #	Freq. (MHz)	Ch. #	Freq. (MHz)	Ch. #	Freq. (MHz)	Ch. #	Freq. (MHz)	Ch. #	Freq. (MHz)	
L	18607	1850.7	18615	1851.5	18625	1852.5	18650	1855	18675	1857.5	18700	1860	
M	18900	1880	18900	1880	18900	1880	18900	1880	18900	1880	18900	1880	
H	19193	1909.3	19185	1908.5	19175	1907.5	19150	1905	19125	1902.5	19100	1900	
LTE Band 4													
	Bandwidth 1.4 MHz		Bandwidth 3 MHz		Bandwidth 5 MHz		Bandwidth 10 MHz		Bandwidth 15 MHz		Bandwidth 20 MHz		
	Ch. #	Freq. (MHz)	Ch. #	Freq. (MHz)	Ch. #	Freq. (MHz)	Ch. #	Freq. (MHz)	Ch. #	Freq. (MHz)	Ch. #	Freq. (MHz)	
L	19957	1710.7	19965	1711.5	19975	1712.5	20000	1715	20025	1717.5	20050	1720	
M	20175	1732.5	20175	1732.5	20175	1732.5	20175	1732.5	20175	1732.5	20175	1732.5	
H	20393	1754.3	20385	1753.5	20375	1752.5	20350	1750	20325	1747.5	20300	1745	
LTE Band 5													
	Bandwidth 1.4 MHz		Bandwidth 3 MHz		Bandwidth 5 MHz		Bandwidth 10 MHz		Bandwidth 15 MHz		Bandwidth 20 MHz		
	Ch. #	Freq. (MHz)	Ch. #	Freq. (MHz)	Ch. #	Freq. (MHz)	Ch. #	Freq. (MHz)	Ch. #	Freq. (MHz)	Ch. #	Freq. (MHz)	
L	20407	824.7	20415	825.5	20425	826.5	20450	829	20450	829	20450	829	
M	20525	836.5	20525	836.5	20525	836.5	20525	836.5	20525	836.5	20525	836.5	
H	20643	848.3	20635	847.5	20625	846.5	20600	844	20600	844	20600	844	
LTE Band 7													
	Bandwidth 5 MHz		Bandwidth 10 MHz		Bandwidth 15 MHz		Bandwidth 20 MHz		Bandwidth 15 MHz		Bandwidth 20 MHz		
	Ch. #	Freq. (MHz)	Ch. #	Freq. (MHz)	Ch. #	Freq. (MHz)	Ch. #	Freq. (MHz)	Ch. #	Freq. (MHz)	Ch. #	Freq. (MHz)	
L	20775	2502.5	20800	2505	20825	2507.5	20850	2510	20850	2510	20850	2510	
M	21100	2535	21100	2535	21100	2535	21100	2535	21100	2535	21100	2535	
H	21425	2567.5	21400	2565	21375	2562.5	21350	2560	21350	2560	21350	2560	
LTE Band 12													
	Bandwidth 1.4 MHz		Bandwidth 3 MHz		Bandwidth 5 MHz		Bandwidth 10 MHz		Bandwidth 15 MHz		Bandwidth 20 MHz		
	Ch. #	Freq. (MHz)	Ch. #	Freq. (MHz)	Ch. #	Freq. (MHz)	Ch. #	Freq. (MHz)	Ch. #	Freq. (MHz)	Ch. #	Freq. (MHz)	
L	23017	699.7	23025	700.5	23035	701.5	23060	704	23060	704	23060	704	
M	23095	707.5	23095	707.5	23095	707.5	23095	707.5	23095	707.5	23095	707.5	
H	23173	715.3	23165	714.5	23155	713.5	23130	711	23130	711	23130	711	
LTE Band 13													
	Bandwidth 5 MHz				Bandwidth 10 MHz				Bandwidth 15 MHz				Bandwidth 20 MHz
	Channel #		Freq.(MHz)		Channel #		Freq.(MHz)		Channel #		Freq.(MHz)		Channel #
L	23205		779.5		23230		782		23255		784.5		23230
M	23230		782		23230		782		23255		784.5		23230
H	23255		784.5		23230		782		23255		784.5		23230
LTE Band 26													
	Bandwidth 1.4 MHz		Bandwidth 3 MHz		Bandwidth 5 MHz		Bandwidth 10 MHz		Bandwidth 15 MHz		Bandwidth 20 MHz		
	Ch. #	Freq. (MHz)	Ch. #	Freq. (MHz)	Ch. #	Freq. (MHz)	Ch. #	Freq. (MHz)	Ch. #	Freq. (MHz)	Ch. #	Freq. (MHz)	
L	26697	814.7	26705	815.5	26715	816.5	26740	819	26765	821.5	26765	821.5	
M	26865	831.5	26865	831.5	26865	831.5	26865	831.5	26865	831.5	26865	831.5	
H	27033	848.3	27025	847.5	27015	846.5	26990	844	26965	841.5	26965	841.5	
LTE Band 41													
	Bandwidth 5 MHz		Bandwidth 10 MHz		Bandwidth 15 MHz		Bandwidth 20 MHz		Bandwidth 15 MHz		Bandwidth 20 MHz		
	Ch. #	Freq. (MHz)	Ch. #	Freq. (MHz)	Ch. #	Freq. (MHz)	Ch. #	Freq. (MHz)	Ch. #	Freq. (MHz)	Ch. #	Freq. (MHz)	
L	39675	2498.5	39700	2501	39725	2503.5	39750	2506	39750	2506	39750	2506	
L	40148	2545.8	40160	2547	40173	2548.3	40185	2549.5	40185	2549.5	40185	2549.5	
M	40620	2593	40620	2593	40620	2593	40620	2593	40620	2593	40620	2593	
H	41093	2640.3	41080	2639	41068	2637.8	41055	2636.5	41055	2636.5	41055	2636.5	
H	41565	2687.5	41540	2685	41515	2682.5	41490	2680	41490	2680	41490	2680	



LTE Band 66												
	Bandwidth 1.4 MHz		Bandwidth 3 MHz		Bandwidth 5 MHz		Bandwidth 10 MHz		Bandwidth 15 MHz		Bandwidth 20 MHz	
	Ch. #	Freq. (MHz)	Ch. #	Freq. (MHz)	Ch. #	Freq. (MHz)	Ch. #	Freq. (MHz)	Ch. #	Freq. (MHz)	Ch. #	Freq. (MHz)
L	131979	1710.7	131987	1711.5	131997	1712.5	132022	1715	132047	1717.5	132072	1720
M	132322	1745	132322	1745	132322	1745	132322	1745	132322	1745	132322	1745
H	132665	1779.3	132657	1778.5	132647	1777.5	132622	1775	132597	1772.5	132572	1770





### 4. RF Exposure Limits

#### 4.1 Uncontrolled Environment

Uncontrolled Environments are defined as locations where there is the exposure of individuals who have no knowledge or control of their exposure. The general population/uncontrolled exposure limits are applicable to situations in which the general public may be exposed or in which persons who are exposed as a consequence of their employment may not be made fully aware of the potential for exposure or cannot exercise control over their exposure. Members of the general public would come under this category when exposure is not employment-related; for example, in the case of a wireless transmitter that exposes persons in its vicinity.

#### 4.2 Controlled Environment

Controlled Environments are defined as locations where there is exposure that may be incurred by persons who are aware of the potential for exposure, (i.e. as a result of employment or occupation). In general, occupational/controlled exposure limits are applicable to situations in which persons are exposed as a consequence of their employment, who have been made fully aware of the potential for exposure and can exercise control over their exposure. The exposure category is also applicable when the exposure is of a transient nature due to incidental passage through a location where the exposure levels may be higher than the general population/uncontrolled limits, but the exposed person is fully aware of the potential for exposure and can exercise control over his or her exposure by leaving the area or by some other appropriate means.

Limits for Occupational/Controlled Exposure (W/kg)

Whole-Body	Partial-Body	Hands, Wrists, Feet and Ankles
0.4	8.0	20.0

Limits for General Population/Uncontrolled Exposure (W/kg)

Whole-Body	Partial-Body	Hands, Wrists, Feet and Ankles
0.08	1.6	4.0

1. Whole-Body SAR is averaged over the entire body, partial-body SAR is averaged over any 1gram of tissue defined as a tissue volume in the shape of a cube. SAR for hands, wrists, feet and ankles is averaged over any 10 grams of tissue defined as a tissue volume in the shape of a cube.

## **5. Specific Absorption Rate (SAR)**

### **5.1 Introduction**

SAR is related to the rate at which energy is absorbed per unit mass in an object exposed to a radio field. The SAR distribution in a biological body is complicated and is usually carried out by experimental techniques or numerical modeling. The standard recommends limits for two tiers of groups, occupational/controlled and general population/uncontrolled, based on a person's awareness and ability to exercise control over his or her exposure. In general, occupational/controlled exposure limits are higher than the limits for general population/uncontrolled.

### **5.2 SAR Definition**

The SAR definition is the time derivative (rate) of the incremental energy (dW) absorbed by (dissipated in) an incremental mass (dm) contained in a volume element (dv) of a given density ( $\rho$ ). The equation description is as below:

$$SAR = \frac{d}{dt} \left( \frac{dW}{dm} \right) = \frac{d}{dt} \left( \frac{dW}{\rho dv} \right)$$

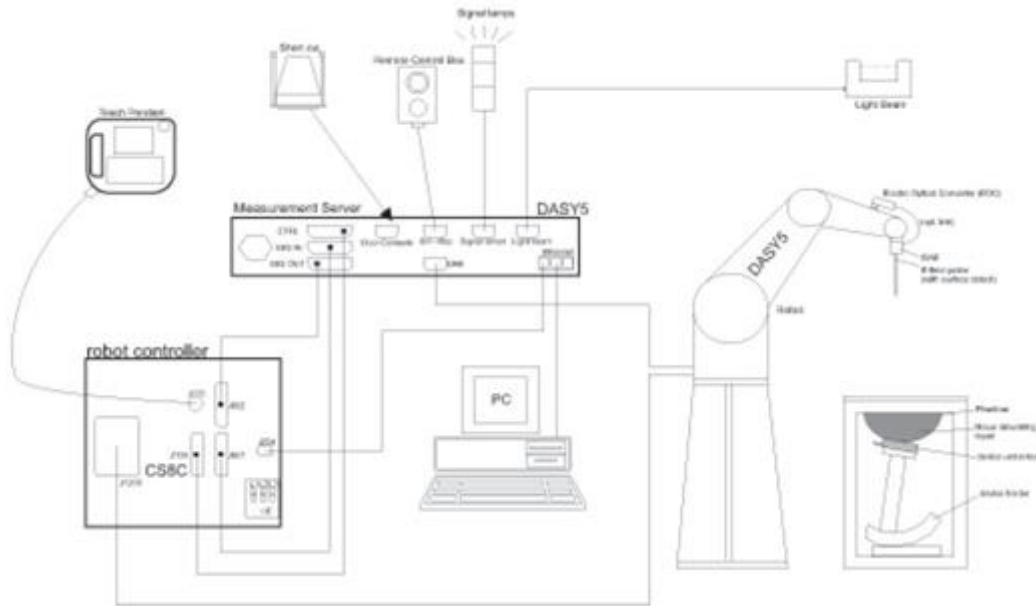
SAR is expressed in units of Watts per kilogram (W/kg)

$$SAR = \frac{\sigma |E|^2}{\rho}$$

Where:  $\sigma$  is the conductivity of the tissue,  $\rho$  is the mass density of the tissue and E is the RMS electrical field strength.

## 6. System Description and Setup

The DASY system used for performing compliance tests consists of the following items:



- A standard high precision 6-axis robot with controller, teach pendant and software. An arm extension for accommodating the data acquisition electronics (DAE).
- An isotropic Field probe optimized and calibrated for the targeted measurement.
- A data acquisition electronics (DAE) which performs the signal amplification, signal multiplexing, AD-conversion, offset measurements, mechanical surface detection, collision detection, etc. The unit is battery powered with standard or rechargeable batteries. The signal is optically transmitted to the EOC.
- The Electro-optical converter (EOC) performs the conversion from optical to electrical signals for the digital communication to the DAE. To use optical surface detection, a special version of the EOC is required. The EOC signal is transmitted to the measurement server.
- The function of the measurement server is to perform the time critical tasks such as signal filtering, control of the robot operation and fast movement interrupts.
- The Light Beam used is for probe alignment. This improves the (absolute) accuracy of the probe positioning.
- A computer running WinXP or Win7 and the DASY5 software.
- Remote control and teach pendant as well as additional circuitry for robot safety such as warning lamps, etc.
- The phantom, the device holder and other accessories according to the targeted measurement.

### 6.1 Test Site Location


Sporton Lab and below test site location are accredited to ISO 17025 by Taiwan Accreditation Foundation (TAF code: 1190 and 0007) and the FCC designation No. TW1190 and TW0007 under the FCC 2.948(e) by Mutual Recognition Agreement (MRA) in FCC test.

Test Site	SPORTON INTERNATIONAL INC. EMC & Wireless Communications Laboratory			
Test Site Location	TW1190 No. 52, Huaya 1st Rd., Guishan Dist., Taoyuan City 333, CHINESE TAIPEI		TW0007 No. 58, Aly. 75, Ln. 564, Wehnuia 3rd, Rd., Guishan Dist., Taoyuan City, CHINESE TAIPEI	
	SAR01-HY	SAR03-HY	SAR08-HY	SAR09-HY
Test Site No.	SAR04-HY	SAR05-HY	SAR11-HY	SAR12-HY
	SAR06-HY	SAR10-HY		


**6.2 E-Field Probe**

The SAR measurement is conducted with the dosimetric probe (manufactured by SPEAG).The probe is specially designed and calibrated for use in liquid with high permittivity. The dosimetric probe has special calibration in liquid at different frequency. This probe has a built in optical surface detection system to prevent from collision with phantom.

**<ES3DV3 Probe>**

<b>Construction</b>	Symmetric design with triangular core Interleaved sensors Built-in shielding against static charges PEEK enclosure material (resistant to organic solvents, e.g., DGBE)	
<b>Frequency</b>	10 MHz – 4 GHz; Linearity: $\pm 0.2$ dB (30 MHz – 4 GHz)	
<b>Directivity</b>	$\pm 0.2$ dB in TSL (rotation around probe axis) $\pm 0.3$ dB in TSL (rotation normal to probe axis)	
<b>Dynamic Range</b>	5 $\mu$ W/g – >100 mW/g; Linearity: $\pm 0.2$ dB	
<b>Dimensions</b>	Overall length: 337 mm (tip: 20 mm) Tip diameter: 3.9 mm (body: 12 mm) Distance from probe tip to dipole centers: 3.0 mm	

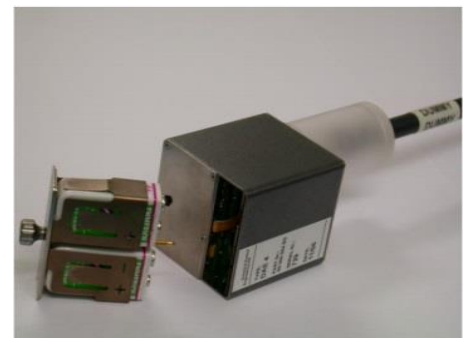
**<EX3DV4 Probe>**

<b>Construction</b>	Symmetric design with triangular core Built-in shielding against static charges PEEK enclosure material (resistant to organic solvents, e.g., DGBE)	
<b>Frequency</b>	10 MHz – >6 GHz Linearity: $\pm 0.2$ dB (30 MHz – 6 GHz)	
<b>Directivity</b>	$\pm 0.3$ dB in TSL (rotation around probe axis) $\pm 0.5$ dB in TSL (rotation normal to probe axis)	
<b>Dynamic Range</b>	10 $\mu$ W/g – >100 mW/g Linearity: $\pm 0.2$ dB (noise: typically <1 $\mu$ W/g)	
<b>Dimensions</b>	Overall length: 337 mm (tip: 20 mm) Tip diameter: 2.5 mm (body: 12 mm) Typical distance from probe tip to dipole centers: 1 mm	

**6.3 Data Acquisition Electronics (DAE)**

The data acquisition electronics (DAE) consists of a highly sensitive electrometer-grade preamplifier with auto-zeroing, a channel and gain-switching multiplexer, a fast 16 bit AD-converter and a command decoder and control logic unit. Transmission to the measurement server is accomplished through an optical downlink for data and status information as well as an optical uplink for commands and the clock.


The input impedance of the DAE is 200 MOhm; the inputs are symmetrical and floating. Common mode rejection is above 80 dB.



**Fig 5.1 Photo of DAE**

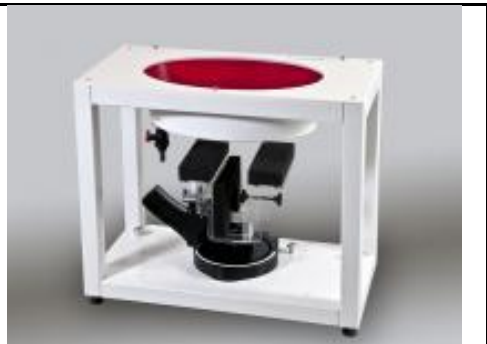
**6.4 Phantom**

**<SAM Twin Phantom>**

<b>Shell Thickness</b>	2 ± 0.2 mm; Center ear point: 6 ± 0.2 mm	
<b>Filling Volume</b>	Approx. 25 liters	
<b>Dimensions</b>	Length: 1000 mm; Width: 500 mm; Height: adjustable feet	
<b>Measurement Areas</b>	Left Hand, Right Hand, Flat Phantom	

The bottom plate contains three pair of bolts for locking the device holder. The device holder positions are adjusted to the standard measurement positions in the three sections. A white cover is provided to tap the phantom during off-periods to prevent water evaporation and changes in the liquid parameters. On the phantom top, three reference markers are provided to identify the phantom position with respect to the robot.

**<ELI Phantom>**

<b>Shell Thickness</b>	2 ± 0.2 mm (sagging: <1%)	
<b>Filling Volume</b>	Approx. 30 liters	
<b>Dimensions</b>	Major ellipse axis: 600 mm Minor axis: 400 mm	

The ELI phantom is intended for compliance testing of handheld and body-mounted wireless devices in the frequency range of 30 MHz to 6 GHz. ELI4 is fully compatible with standard and all known tissue simulating liquids.

## **6.5 Device Holder**

### **<Mounting Device for Hand-Held Transmitter>**

In combination with the Twin SAM V5.0/V5.0c or ELI phantoms, the Mounting Device for Hand-Held Transmitters enables rotation of the mounted transmitter device to specified spherical coordinates. At the heads, the rotation axis is at the ear opening. Transmitter devices can be easily and accurately positioned according to IEC 62209-1, IEEE 1528, FCC, or other specifications. The device holder can be locked for positioning at different phantom sections (left head, right head, flat). And upgrade kit to Mounting Device to enable easy mounting of wider devices like big smart-phones, e-books, small tablets, etc. It holds devices with width up to 140 mm.



Mounting Device for Hand-Held Transmitters



Mounting Device Adaptor for Wide-Phones

### **<Mounting Device for Laptops and other Body-Worn Transmitters>**

The extension is lightweight and made of POM, acrylic glass and foam. It fits easily on the upper part of the mounting device in place of the phone positioned. The extension is fully compatible with the SAM Twin and ELI phantoms.



Mounting Device for Laptops

## **7. Measurement Procedures**

The measurement procedures are as follows:

### <Conducted power measurement>

- (a) For WWAN power measurement, use base station simulator to configure EUT WWAN transmission in conducted connection with RF cable, at maximum power in each supported wireless interface and frequency band.
- (b) Read the WWAN RF power level from the base station simulator.
- (c) For WLAN/BT power measurement, use engineering software to configure EUT WLAN/BT continuously transmission, at maximum RF power in each supported wireless interface and frequency band
- (d) Connect EUT RF port through RF cable to the power meter, and measure WLAN/BT output power

### <SAR measurement>

- (a) Use base station simulator to configure EUT WWAN transmission in radiated connection, and engineering software to configure EUT WLAN/BT continuously transmission, at maximum RF power, in the highest power channel.
- (b) Place the EUT in the positions as Appendix D demonstrates.
- (c) Set scan area, grid size and other setting on the DASY software.
- (d) Measure SAR results for the highest power channel on each testing position.
- (e) Find out the largest SAR result on these testing positions of each band
- (f) Measure SAR results for other channels in worst SAR testing position if the reported SAR of highest power channel is larger than 0.8 W/kg

According to the test standard, the recommended procedure for assessing the peak spatial-average SAR value consists of the following steps:

- (a) Power reference measurement
- (b) Area scan
- (c) Zoom scan
- (d) Power drift measurement

### **7.1 Spatial Peak SAR Evaluation**

The procedure for spatial peak SAR evaluation has been implemented according to the test standard. It can be conducted for 1g and 10g, as well as for user-specific masses. The DASY software includes all numerical procedures necessary to evaluate the spatial peak SAR value.

The base for the evaluation is a "cube" measurement. The measured volume must include the 1g and 10g cubes with the highest averaged SAR values. For that purpose, the center of the measured volume is aligned to the interpolated peak SAR value of a previously performed area scan.

The entire evaluation of the spatial peak values is performed within the post-processing engine (SEMCAD). The system always gives the maximum values for the 1g and 10g cubes. The algorithm to find the cube with highest averaged SAR is divided into the following stages:

- (a) Extraction of the measured data (grid and values) from the Zoom Scan
- (b) Calculation of the SAR value at every measurement point based on all stored data (A/D values and measurement parameters)
- (c) Generation of a high-resolution mesh within the measured volume
- (d) Interpolation of all measured values from the measurement grid to the high-resolution grid
- (e) Extrapolation of the entire 3-D field distribution to the phantom surface over the distance from sensor to surface
- (f) Calculation of the averaged SAR within masses of 1g and 10g

**7.2 Power Reference Measurement**

The Power Reference Measurement and Power Drift Measurements are for monitoring the power drift of the device under test in the batch process. The minimum distance of probe sensors to surface determines the closest measurement point to phantom surface. This distance cannot be smaller than the distance of sensor calibration points to probe tip as defined in the probe properties.

**7.3 Area Scan**

The area scan is used as a fast scan in two dimensions to find the area of high field values, before doing a fine measurement around the hot spot. The sophisticated interpolation routines implemented in DASY software can find the maximum found in the scanned area, within a range of the global maximum. The range (in dB) is specified in the standards for compliance testing. For example, a 2 dB range is required in IEEE standard 1528 and IEC 62209 standards, whereby 3 dB is a requirement when compliance is assessed in accordance with the ARIB standard (Japan), if only one zoom scan follows the area scan, then only the absolute maximum will be taken as reference. For cases where multiple maximums are detected, the number of zoom scans has to be increased accordingly.

Area scan parameters extracted from FCC KDB 865664 D01v01r04 SAR measurement 100 MHz to 6 GHz.

	≤ 3 GHz	> 3 GHz
Maximum distance from closest measurement point (geometric center of probe sensors) to phantom surface	5 ± 1 mm	$\frac{1}{2} \cdot \delta \cdot \ln(2) \pm 0.5$ mm
Maximum probe angle from probe axis to phantom surface normal at the measurement location	30° ± 1°	20° ± 1°
Maximum area scan spatial resolution: $\Delta x_{Area}, \Delta y_{Area}$	≤ 2 GHz: ≤ 15 mm 2 – 3 GHz: ≤ 12 mm	3 – 4 GHz: ≤ 12 mm 4 – 6 GHz: ≤ 10 mm
	When the x or y dimension of the test device, in the measurement plane orientation, is smaller than the above, the measurement resolution must be ≤ the corresponding x or y dimension of the test device with at least one measurement point on the test device.	



**7.4 Zoom Scan**

Zoom scans are used assess the peak spatial SAR values within a cubic averaging volume containing 1 gram and 10 gram of simulated tissue. The zoom scan measures points (refer to table below) within a cube shoes base faces are centered on the maxima found in a preceding area scan job within the same procedure. When the measurement is done, the zoom scan evaluates the averaged SAR for 1 gram and 10 gram and displays these values next to the job's label.

Zoom scan parameters extracted from FCC KDB 865664 D01v01r04 SAR measurement 100 MHz to 6 GHz.

		≤ 3 GHz	> 3 GHz	
Maximum zoom scan spatial resolution: $\Delta x_{Zoom}, \Delta y_{Zoom}$		$\leq 2$ GHz: $\leq 8$ mm 2 – 3 GHz: $\leq 5$ mm*	3 – 4 GHz: $\leq 5$ mm* 4 – 6 GHz: $\leq 4$ mm*	
Maximum zoom scan spatial resolution, normal to phantom surface	uniform grid: $\Delta z_{Zoom}(n)$	$\leq 5$ mm	3 – 4 GHz: $\leq 4$ mm 4 – 5 GHz: $\leq 3$ mm 5 – 6 GHz: $\leq 2$ mm	
	graded grid	$\Delta z_{Zoom}(1)$ : between 1 <sup>st</sup> two points closest to phantom surface	$\leq 4$ mm	3 – 4 GHz: $\leq 3$ mm 4 – 5 GHz: $\leq 2.5$ mm 5 – 6 GHz: $\leq 2$ mm
		$\Delta z_{Zoom}(n>1)$ : between subsequent points	$\leq 1.5 \cdot \Delta z_{Zoom}(n-1)$	
Minimum zoom scan volume	x, y, z	$\geq 30$ mm	3 – 4 GHz: $\geq 28$ mm 4 – 5 GHz: $\geq 25$ mm 5 – 6 GHz: $\geq 22$ mm	
Note: $\delta$ is the penetration depth of a plane-wave at normal incidence to the tissue medium; see draft standard IEEE P1528-2011 for details. * When zoom scan is required and the <i>reported</i> SAR from the <i>area scan based 1-g SAR estimation</i> procedures of KDB 447498 is $\leq 1.4$ W/kg, $\leq 8$ mm, $\leq 7$ mm and $\leq 5$ mm zoom scan resolution may be applied, respectively, for 2 GHz to 3 GHz, 3 GHz to 4 GHz and 4 GHz to 6 GHz.				

**7.5 Volume Scan Procedures**

The volume scan is used for assess overlapping SAR distributions for antennas transmitting in different frequency bands. It is equivalent to an oversized zoom scan used in standalone measurements. The measurement volume will be used to enclose all the simultaneous transmitting antennas. For antennas transmitting simultaneously in different frequency bands, the volume scan is measured separately in each frequency band. In order to sum correctly to compute the 1g aggregate SAR, the EUT remain in the same test position for all measurements and all volume scan use the same spatial resolution and grid spacing. When all volume scan were completed, the software, SEMCAD postprocessor can combine and subsequently superpose these measurement data to calculating the multiband SAR.

**7.6 Power Drift Monitoring**

All SAR testing is under the EUT install full charged battery and transmit maximum output power. In DASY measurement software, the power reference measurement and power drift measurement procedures are used for monitoring the power drift of EUT during SAR test. Both these procedures measure the field at a specified reference position before and after the SAR testing. The software will calculate the field difference in dB. If the power drifts more than 5%, the SAR will be retested.



### 8. Test Equipment List

Manufacturer	Name of Equipment	Type/Model	Serial Number	Calibration	
				Last Cal.	Due Date
SPEAG	750MHz System Validation Kit <sup>(2)</sup>	D750V3	1107	Mar. 08, 2019	Mar. 06, 2021
SPEAG	835MHz System Validation Kit	D835V2	4d167	Nov. 25, 2019	Nov. 24, 2020
SPEAG	1750MHz System Validation Kit <sup>(2)</sup>	D1750V2	1112	Mar. 07, 2019	Mar. 05, 2021
SPEAG	1900MHz System Validation Kit <sup>(2)</sup>	D1900V2	5d185	Mar. 07, 2019	Mar. 05, 2021
SPEAG	2600MHz System Validation Kit <sup>(2)</sup>	D2600V2	1078	Mar. 06, 2019	Mar. 04, 2021
SPEAG	Data Acquisition Electronics	DAE4	699	Feb. 26, 2020	Feb. 25, 2021
SPEAG	Dosimetric E-Field Probe	ES3DV3	3169	May. 27, 2020	May. 26, 2021
RCPTWN	Thermometer	HTC-1	TM560-2	Nov. 12, 2019	Nov. 11, 2020
Anritsu	Radio Communication Analyzer	MT8821C	6201341950	Oct. 31, 2019	Oct. 30, 2020
Agilent	Wireless Communication Test Set	E5515C	MY50267236	Mar. 18, 2020	Mar. 17, 2021
SPEAG	Device Holder	N/A	N/A	N/A	N/A
Anritsu	Signal Generator	MG3710A	6201502524	Nov. 20, 2019	Nov. 19, 2020
Agilent	ENA Network Analyzer	E5071C	MY46101588	Jun. 10, 2020	Jun. 09, 2021
SPEAG	Dielectric Probe Kit	DAK-3.5	1146	Jul. 22, 2020	Jul. 21, 2021
LINE SEIKI	Digital Thermometer	DTM3000-spezial	2942	Nov. 18, 2019	Nov. 17, 2020
Anritsu	Power Meter	ML2495A	1419002	Aug. 19, 2020	Aug. 18, 2021
Anritsu	Power Sensor	MA2411B	1911176	Aug. 18, 2020	Aug. 17, 2021
Anritsu	Power Meter	ML2495A	1240001	Sep. 01, 2020	Aug. 31, 2021
Anritsu	Power Sensor	MA2411B	1207349	Sep. 01, 2020	Aug. 31, 2021
Anritsu	Spectrum Analyzer	MS2830A	6201396378	Jun. 30, 2020	Jun. 29, 2021
Anritsu	Spectrum Analyzer	N9010A	MY53470118	Mar. 12, 2020	Mar. 11, 2021
Mini-Circuits	Power Amplifier	ZVE-8G+	6418	Oct. 16, 2019	Oct. 15, 2020
Mini-Circuits	Power Amplifier	ZVE-8G+	479102029	Aug. 26, 2020	Aug. 25, 2021
ATM	Dual Directional Coupler	C122H-10	P610410z-02	Note 1	
Woken	Attenuator 1	WK0602-XX	N/A	Note 1	
PE	Attenuator 2	PE7005-10	N/A	Note 1	
PE	Attenuator 3	PE7005-3	N/A	Note 1	

**General Note:**

1. Prior to system verification and validation, the path loss from the signal generator to the system check source and the power meter, which includes the amplifier, cable, attenuator and directional coupler, was measured by the network analyzer. The reading of the power meter was offset by the path loss difference between the path to the power meter and the path to the system check source to monitor the actual power level fed to the system check source.
2. The dipole calibration interval can be extended to 3 years with justification according to KDB 865664 D01. The dipoles are also not physically damaged, or repaired during the interval. The justification data in appendix C can be found which the return loss is < -20dB, within 20% of prior calibration, the impedance is within 5 ohm of prior calibration for each dipole.

## 9. System Verification

### 9.1 Tissue Simulating Liquids

For the measurement of the field distribution inside the SAM phantom with DASY, the phantom must be filled with around 25 liters of homogeneous body tissue simulating liquid. For head SAR testing, the liquid height from the ear reference point (ERP) of the phantom to the liquid top surface is larger than 15 cm, which is shown in Fig. 10.1. For body SAR testing, the liquid height from the center of the flat phantom to the liquid top surface is larger than 15 cm, which is shown in Fig. 10.2.

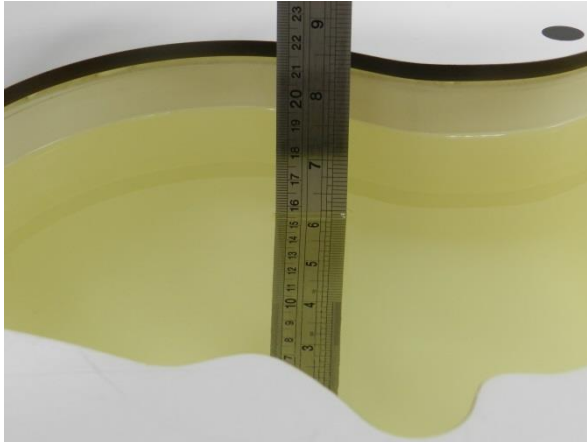


Fig 10.1 Photo of Liquid Height for Head SAR

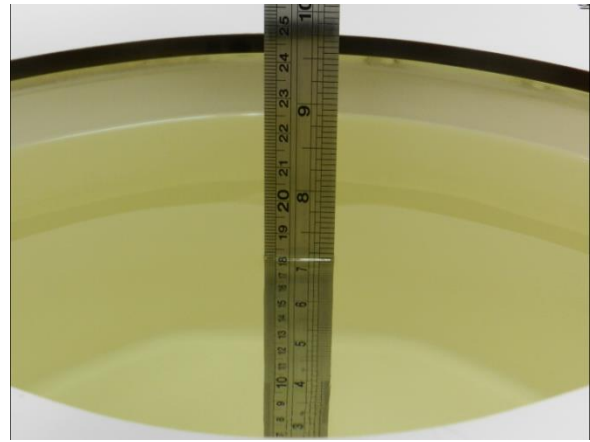


Fig 10.2 Photo of Liquid Height for Body SAR

### 9.2 Tissue Verification

The following tissue formulations are provided for reference only as some of the parameters have not been thoroughly verified. The composition of ingredients may be modified accordingly to achieve the desired target tissue parameters required for routine SAR evaluation.

Frequency (MHz)	Water (%)	Sugar (%)	Cellulose (%)	Salt (%)	Preventol (%)	DGBE (%)	Conductivity ( $\sigma$ )	Permittivity ( $\epsilon_r$ )
750	41.1	57.0	0.2	1.4	0.2	0	0.89	41.9
835	40.3	57.9	0.2	1.4	0.2	0	0.90	41.5
900	40.3	57.9	0.2	1.4	0.2	0	0.97	41.5
1800, 1900, 2000	55.2	0	0	0.3	0	44.5	1.40	40.0
2450	55.0	0	0	0	0	45.0	1.80	39.2
2600	54.8	0	0	0.1	0	45.1	1.96	39.0

#### Simulating Liquid for 5GHz, Manufactured by SPEAG

Ingredients	(% by weight)
Water	64~78%
Mineral oil	11~18%
Emulsifiers	9~15%
Additives and Salt	2~3%

#### <Tissue Dielectric Parameter Check Results>

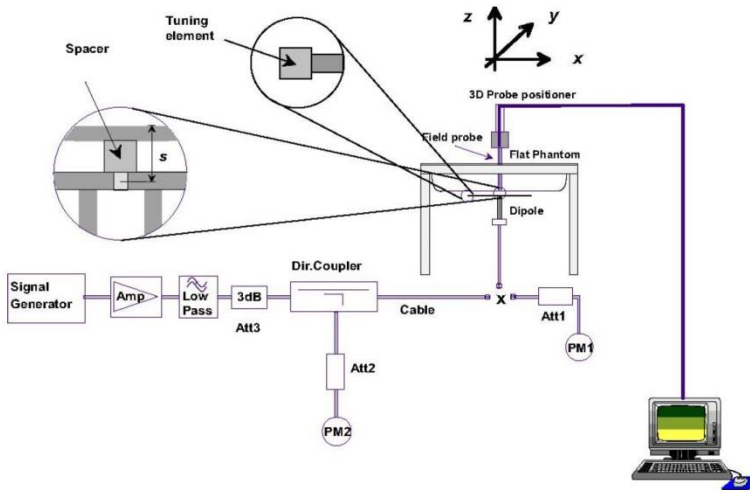
Frequency (MHz)	Liquid Temp. (°C)	Conductivity ( $\sigma$ )	Permittivity ( $\epsilon_r$ )	Conductivity Target ( $\sigma$ )	Permittivity Target ( $\epsilon_r$ )	Delta ( $\sigma$ ) (%)	Delta ( $\epsilon_r$ ) (%)	Limit (%)	Date
750	22.1	0.894	43.353	0.89	41.90	0.45	3.47	±5	2020/9/23
835	22.6	0.877	42.645	0.90	41.50	-2.56	2.76	±5	2020/9/22
1750	22.6	1.370	39.530	1.37	40.10	0.00	-1.42	±5	2020/9/22
1900	22.5	1.450	40.233	1.40	40.00	3.57	0.58	±5	2020/9/21
2600	22.5	2.026	39.099	1.96	39.00	3.37	0.25	±5	2020/9/21

**9.3 System Performance Check Results**

Comparing to the original SAR value provided by SPEAG, the verification data should be within its specification of 10 %. Below table shows the target SAR and measured SAR after normalized to 1W input power. The table below indicates the system performance check can meet the variation criterion and the plots can be referred to Appendix A of this report.

Date	Frequency (MHz)	Input Power (mW)	Dipole S/N	Probe S/N	DAE S/N	Measured 1g SAR (W/kg)	Targeted 1g SAR (W/kg)	Normalized 1g SAR (W/kg)	Deviation (%)
2020/9/23	750	250	D750V3-1107	ES3DV3 - SN3169	DAE4 Sn699	2.03	8.32	8.12	-2.40
2020/9/22	835	250	D835V2-4d167	ES3DV3 - SN3169	DAE4 Sn699	2.20	9.55	8.8	-7.85
2020/9/22	1750	250	D1750V2-1112	ES3DV3 - SN3169	DAE4 Sn699	8.58	36.70	34.32	-6.49
2020/9/21	1900	250	D1900V2-5d185	ES3DV3 - SN3169	DAE4 Sn699	9.97	39.40	39.88	1.22
2020/9/21	2600	250	D2600V2-1078	ES3DV3 - SN3169	DAE4 Sn699	14.60	57.60	58.4	1.39

Date	Frequency (MHz)	Input Power (mW)	Dipole S/N	Probe S/N	DAE S/N	Measured 10g SAR (W/kg)	Targeted 10g SAR (W/kg)	Normalized 10g SAR (W/kg)	Deviation (%)
2020/9/23	750	250	D750V3-1107	ES3DV3 - SN3169	DAE4 Sn699	1.35	5.61	5.4	-3.74
2020/9/22	835	250	D835V2-4d167	ES3DV3 - SN3169	DAE4 Sn699	1.44	6.21	5.76	-7.25
2020/9/22	1750	250	D1750V2-1112	ES3DV3 - SN3169	DAE4 Sn699	4.62	19.40	18.48	-4.74
2020/9/21	1900	250	D1900V2-5d185	ES3DV3 - SN3169	DAE4 Sn699	5.23	20.50	20.92	2.05
2020/9/21	2600	250	D2600V2-1078	ES3DV3 - SN3169	DAE4 Sn699	6.73	25.50	26.92	5.57



**Fig 8.3.1 System Performance Check Setup**



**Fig 8.3.2 Setup Photo**

**10. UMTS/LTE Output Power (Unit: dBm)**

**<WCDMA Conducted Power>**

1. The following tests were conducted according to the test requirements outlines in 3GPP TS 34.121 specification.
2. The procedures in KDB 941225 D01v03r01 are applied for 3GPP Rel. 6 HSPA to configure the device in the required sub-test mode(s) to determine SAR test exclusion.

A summary of these settings are illustrated below:

**HSDPA Setup Configuration:**

- a. The EUT was connected to Base Station Agilent E5515C referred to the Setup Configuration.
- b. The RF path losses were compensated into the measurements.
- c. A call was established between EUT and Base Station with following setting:
  - i. Set Gain Factors ( $\beta_c$  and  $\beta_d$ ) and parameters were set according to each
  - ii. Specific sub-test in the following table, C10.1.4, quoted from the TS 34.121
  - iii. Set RMC 12.2Kbps + HSDPA mode.
  - iv. Set Cell Power = -86 dBm
  - v. Set HS-DSCH Configuration Type to FRC (H-set 1, QPSK)
  - vi. Select HSDPA Uplink Parameters
  - vii. Set Delta ACK, Delta NACK and Delta CQI = 8
  - viii. Set Ack-Nack Repetition Factor to 3
  - ix. Set CQI Feedback Cycle (k) to 4 ms
  - x. Set CQI Repetition Factor to 2
  - xi. Power Ctrl Mode = All Up bits
- d. The transmitted maximum output power was recorded.

**Table C.10.1.4:  $\beta$  values for transmitter characteristics tests with HS-DPCCH**

Sub-test	$\beta_c$	$\beta_d$	$\beta_d$ (SF)	$\beta_c/\beta_d$	$\beta_{HS}$ (Note 1, Note 2)	CM (dB) (Note 3)	MPR (dB) (Note 3)
1	2/15	15/15	64	2/15	4/15	0.0	0.0
2	12/15 (Note 4)	15/15 (Note 4)	64	12/15 (Note 4)	24/15	1.0	0.0
3	15/15	8/15	64	15/8	30/15	1.5	0.5
4	15/15	4/15	64	15/4	30/15	1.5	0.5

Note 1:  $\Delta_{ACK}, \Delta_{NACK}$  and  $\Delta_{CQI} = 30/15$  with  $\beta_{HS} = 30/15 * \beta_c$ .

Note 2: For the HS-DPCCH power mask requirement test in clause 5.2C, 5.7A, and the Error Vector Magnitude (EVM) with HS-DPCCH test in clause 5.13.1A, and HSDPA EVM with phase discontinuity in clause 5.13.1AA,  $\Delta_{ACK}$  and  $\Delta_{NACK} = 30/15$  with  $\beta_{HS} = 30/15 * \beta_c$ , and  $\Delta_{CQI} = 24/15$  with  $\beta_{HS} = 24/15 * \beta_c$ .

Note 3: CM = 1 for  $\beta_c/\beta_d = 12/15, \beta_{HS}/\beta_c = 24/15$ . For all other combinations of DPDCCH, DPCCH and HS-DPCCH the MPR is based on the relative CM difference. This is applicable for only UEs that support HSDPA in release 6 and later releases.

Note 4: For subtest 2 the  $\beta_c/\beta_d$  ratio of 12/15 for the TFC during the measurement period (TF1, TF0) is achieved by setting the signalled gain factors for the reference TFC (TF1, TF1) to  $\beta_c = 11/15$  and  $\beta_d = 15/15$ .

**Setup Configuration**

**HSUPA Setup Configuration:**

- a. The EUT was connected to Base Station Agilent E5515C referred to the Setup Configuration.
- b. The RF path losses were compensated into the measurements.
- c. A call was established between EUT and Base Station with following setting \* :
  - i. Call Configs = 5.2B, 5.9B, 5.10B, and 5.13.2B with QPSK
  - ii. Set the Gain Factors ( $\beta_c$  and  $\beta_d$ ) and parameters (AG Index) were set according to each specific sub-test in the following table, C11.1.3, quoted from the TS 34.121
  - iii. Set Cell Power = -86 dBm
  - iv. Set Channel Type = 12.2k + HSPA
  - v. Set UE Target Power
  - vi. Power Ctrl Mode= Alternating bits
  - vii. Set and observe the E-TFCl
  - viii. Confirm that E-TFCl is equal to the target E-TFCl of 75 for sub-test 1, and other subtest's E-TFCl
- d. The transmitted maximum output power was recorded.

**Table C.11.1.3:  $\beta$  values for transmitter characteristics tests with HS-DPCCH and E-DCH**

Sub-test	$\beta_c$	$\beta_d$	$\beta_d$ (SF)	$\beta_c/\beta_d$	$\beta_{HS}$ (Note1)	$\beta_{ec}$	$\beta_{ed}$ (Note 4) (Note 5)	$\beta_{ed}$ (SF)	$\beta_{ed}$ (Codes)	CM (dB) (Note 2)	MPR (dB) (Note 2) (Note 6)	AG Index (Note 5)	E-TFCl
1	11/15 (Note 3)	15/15 (Note 3)	64	11/15 (Note 3)	22/15	209/25	1309/225	4	1	1.0	0.0	20	75
2	6/15	15/15	64	6/15	12/15	12/15	94/75	4	1	3.0	2.0	12	67
3	15/15	9/15	64	15/9	30/15	30/15	$\beta_{ed1}: 47/15$ $\beta_{ed2}: 47/15$	4 4	2	2.0	1.0	15	92
4	2/15	15/15	64	2/15	4/15	2/15	56/75	4	1	3.0	2.0	17	71
5	15/15	0	-	-	5/15	5/15	47/15	4	1	1.0	0.0	12	67

Note 1: For sub-test 1 to 4,  $\Delta_{ACK}$ ,  $\Delta_{NACK}$  and  $\Delta_{CQI} = 30/15$  with  $\beta_{hs} = 30/15 * \beta_c$ . For sub-test 5,  $\Delta_{ACK}$ ,  $\Delta_{NACK}$  and  $\Delta_{CQI} = 5/15$  with  $\beta_{hs} = 5/15 * \beta_c$ .

Note 2: CM = 1 for  $\beta_c/\beta_d = 12/15$ ,  $\beta_{hs}/\beta_c = 24/15$ . For all other combinations of DPDCH, DPCCH, HS-DPCCH, E-DPDCH and E-DPCCH the MPR is based on the relative CM difference.

Note 3: For subtest 1 the  $\beta_c/\beta_d$  ratio of 11/15 for the TFC during the measurement period (TF1, TF0) is achieved by setting the signalled gain factors for the reference TFC (TF1, TF1) to  $\beta_c = 10/15$  and  $\beta_d = 15/15$ .

Note 4: In case of testing by UE using E-DPDCH Physical Layer category 1, Sub-test 3 is omitted according to TS25.306 Table 5.1g.

Note 5:  $\beta_{ed}$  can not be set directly; it is set by Absolute Grant Value.

Note 6: For subtests 2, 3 and 4, UE may perform E-DPDCH power scaling at max power which could results in slightly smaller MPR values.

**Setup Configuration**



**<WCDMA Conducted Power>**

**General Note:**

1. Per KDB 941225 D01v03r01, for SAR testing is measured using a 12.2 kbps RMC with TPC bits configured to all "1's".
2. Per KDB 941225 D01v03r01, RMC 12.2kbps setting is used to evaluate SAR. The maximum output power and tune-up tolerance specified for production units in HSDPA / HSUPA is  $\leq \frac{1}{4}$  dB higher than RMC 12.2Kbps or when the highest reported SAR of the RMC12.2Kbps is scaled by the ratio of specified maximum output power and tune-up tolerance of HSDPA / HSUPA to RMC12.2Kbps and the adjusted SAR is  $\leq 1.2$  W/kg, SAR measurement is not required for HSDPA / HSUPA, and according to the following RF output power, the output power results of the secondary modes (HSUPA, HSDPA) are less than  $\frac{1}{4}$  dB higher than the primary modes; therefore, SAR measurement is not required for HSDPA / HSUPA

Band		WCDMA II			Tune-up Limit (dBm)	WCDMA IV			Tune-up Limit (dBm)	WCDMA V			Tune-up Limit (dBm)
TX Channel		9262	9400	9538		1312	1413	1513		4132	4182	4233	
Rx Channel		9662	9800	9938	1537	1638	1738	4357	4407	4458			
Frequency (MHz)		1852.4	1880	1907.6	1712.4	1732.6	1752.6	826.4	836.4	846.6			
3GPP Rel 99	RMC 12.2Kbps	23.92	23.90	23.98	24.00	23.74	23.95	23.93	24.00	23.65	23.73	23.72	24.00
3GPP Rel 6	HSDPA Subtest-1	22.83	22.97	22.97	23.00	22.79	22.97	22.97	23.00	22.64	22.75	22.73	23.00
3GPP Rel 6	HSDPA Subtest-2	22.93	22.95	22.99	23.00	22.87	22.95	22.94	23.00	22.65	22.75	22.72	23.00
3GPP Rel 6	HSDPA Subtest-3	22.45	22.43	22.47	22.50	22.35	22.44	22.46	22.50	22.14	22.24	22.23	22.50
3GPP Rel 6	HSDPA Subtest-4	22.44	22.46	22.49	22.50	22.34	22.45	22.43	22.50	22.16	22.25	22.22	22.50
3GPP Rel 6	HSUPA Subtest-1	22.91	22.90	22.94	23.00	22.85	22.93	22.95	23.00	22.61	22.69	22.66	23.00
3GPP Rel 6	HSUPA Subtest-2	20.93	20.92	20.95	21.00	20.84	20.93	20.93	21.00	20.63	20.74	20.69	21.00
3GPP Rel 6	HSUPA Subtest-3	21.88	21.87	21.92	22.00	21.80	21.89	21.88	22.00	21.59	21.68	21.67	22.00
3GPP Rel 6	HSUPA Subtest-4	20.89	20.94	20.93	21.00	20.86	20.95	20.96	21.00	20.60	20.70	20.66	21.00
3GPP Rel 6	HSUPA Subtest-5	22.78	22.79	22.85	23.00	22.74	22.83	22.81	23.00	22.51	22.59	22.57	23.00



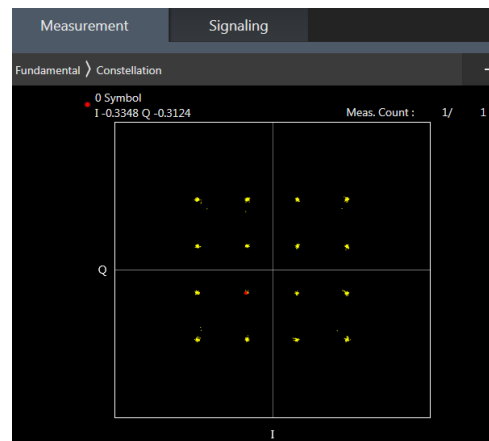
**<LTE Conducted Power>**

**General Note:**

1. Anritsu MT8820C base station simulator was used to setup the connection with EUT; the frequency band, channel bandwidth, RB allocation configuration, modulation type are set in the base station simulator to configure EUT transmitting at maximum power and at different configurations which are requested to be reported to FCC, for conducted power measurement and SAR testing.
2. Per KDB 941225 D05v02r05, when a properly configured base station simulator is used for the SAR and power measurements, spectrum plots for each RB allocation and offset configuration is not required.
3. Per KDB 941225 D05v02r05, start with the largest channel bandwidth and measure SAR for QPSK with 1 RB allocation, using the RB offset and required test channel combination with the highest maximum output power for RB offsets at the upper edge, middle and lower edge of each required test channel.
4. Per KDB 941225 D05v02r05, 50% RB allocation for QPSK SAR testing follows 1RB QPSK allocation procedure.
5. Per KDB 941225 D05v02r05, For QPSK with 100% RB allocation, SAR is not required when the highest maximum output power for 100 % RB allocation is less than the highest maximum output power in 50% and 1 RB allocations and the highest reported SAR for 1 RB and 50% RB allocation are  $\leq 0.8$  W/kg. Otherwise, SAR is measured for the highest output power channel; and if the reported SAR is  $> 1.45$  W/kg, the remaining required test channels must also be tested.
6. Per KDB 941225 D05v02r05, 16QAM output power for each RB allocation configuration is  $>$  not  $\frac{1}{2}$  dB higher than the same configuration in QPSK and the reported SAR for the QPSK configuration is  $\leq 1.45$  W/kg; Per KDB 941225 D05v02r05, 16QAM SAR testing is not required.
7. Per KDB 941225 D05v02r05, Smaller bandwidth output power for each RB allocation configuration is  $>$  not  $\frac{1}{2}$  dB higher than the same configuration in the largest supported bandwidth, and the reported SAR for the largest supported bandwidth is  $\leq 1.45$  W/kg; Per KDB 941225 D05v02r05, smaller bandwidth SAR testing is not required.
8. For LTE B4/B5/B12/B26 the maximum bandwidth does not support three non-overlapping channels, per KDB 941225 D05v02r05, when a device supports overlapping channel assignment in a channel bandwidth configuration, the middle channel of the group of overlapping channels should be selected for testing.
9. LTE band 4/5 SAR test was covered by Band 66/26; according to April 2015 TCB workshop, SAR test for overlapping LTE bands can be reduced if
  - a. the maximum output power, including tolerance, for the smaller band is  $\leq$  the larger band to qualify for the SAR test exclusion
  - b. the channel bandwidth and other operating parameters for the smaller band are fully supported by the larger band
10. According to 2017 TCB workshop, for 64 QAM and 16 QAM should be verified by checking the signal constellation with a call box to avoid incorrect maximum power levels due to MPR and other requirements associated with signal modulation, and the following figure is taken from the "Fundamental Measurement >> Modulation Analysis >> constellation" mode of the device connect to the MT8821C base station, therefore, the device 64QAM and 16QAM signal modulation are correct.



**64QAM**



**16QAM**



**<LTE Band 2>**

BW [MHz]	Modulation	RB Size	RB Offset	Power Low Ch. / Freq.	Power Middle Ch. / Freq.	Power High Ch. / Freq.	Tune-up limit (dBm)	MPR (dB)
Channel				18700	18900	19100		
Frequency (MHz)				1860	1880	1900		
20	QPSK	1	0	23.17	23.17	23.52	24	0
20	QPSK	1	49	22.95	23.12	23.29		
20	QPSK	1	99	22.89	22.99	23.34		
20	QPSK	50	0	22.09	22.18	22.45	23	1
20	QPSK	50	24	22.03	22.17	22.40		
20	QPSK	50	50	22.04	22.08	22.40		
20	QPSK	100	0	22.04	22.17	22.39		
20	16QAM	1	0	22.47	22.51	22.84	23	1
20	16QAM	1	49	22.23	22.45	22.58		
20	16QAM	1	99	22.25	22.29	22.67		
20	16QAM	50	0	21.10	21.17	21.44	22	2
20	16QAM	50	24	21.02	21.20	21.38		
20	16QAM	50	50	21.04	21.12	21.40		
20	16QAM	100	0	21.02	21.18	21.38		
20	64QAM	1	0	21.35	21.41	21.73	22	2
20	64QAM	1	49	21.17	21.33	21.45		
20	64QAM	1	99	21.13	21.15	21.56		
20	64QAM	50	0	20.13	20.17	20.48	21	3
20	64QAM	50	24	20.07	20.19	20.39		
20	64QAM	50	50	20.05	20.09	20.42		
20	64QAM	100	0	20.04	20.19	20.43		
Channel				18675	18900	19125	Tune-up limit (dBm)	MPR (dB)
Frequency (MHz)				1857.5	1880	1902.5		
15	QPSK	1	0	23.14	23.22	23.48	24	0
15	QPSK	1	37	22.97	23.15	23.29		
15	QPSK	1	74	23.02	23.09	23.37		
15	QPSK	36	0	22.09	22.21	22.44	23	1
15	QPSK	36	20	22.04	22.17	22.35		
15	QPSK	36	39	21.94	22.11	22.39		
15	QPSK	75	0	22.03	22.18	22.38		
15	16QAM	1	0	22.47	22.54	22.77	23	1
15	16QAM	1	37	22.29	22.47	22.62		
15	16QAM	1	74	22.36	22.44	22.67		
15	16QAM	36	0	21.07	21.27	21.43	22	2
15	16QAM	36	20	21.04	21.17	21.36		
15	16QAM	36	39	20.94	21.12	21.44		
15	16QAM	75	0	21.02	21.18	21.40		
15	64QAM	1	0	21.36	21.43	21.72	22	2
15	64QAM	1	37	21.16	21.32	21.48		
15	64QAM	1	74	21.23	21.28	21.59		
15	64QAM	36	0	20.12	20.25	20.45	21	3
15	64QAM	36	20	20.04	20.20	20.40		
15	64QAM	36	39	19.96	20.16	20.44		
15	64QAM	75	0	20.03	20.16	20.38		
Channel				18650	18900	19150	Tune-up limit (dBm)	MPR (dB)
Frequency (MHz)				1855	1880	1905		
10	QPSK	1	0	23.05	23.10	23.31	24	0
10	QPSK	1	25	22.94	23.12	23.29		
10	QPSK	1	49	22.86	23.07	23.25		
10	QPSK	25	0	22.02	22.17	22.28	23	1
10	QPSK	25	12	22.00	22.17	22.34		



**FCC SAR TEST REPORT**

**Report No. : FA081931-01**

10	QPSK	25	25	21.93	22.10	22.32		
10	QPSK	50	0	22.00	22.13	22.34		
10	16QAM	1	0	22.36	22.46	22.65	23	1
10	16QAM	1	25	22.25	22.45	22.64		
10	16QAM	1	49	22.19	22.35	22.55		
10	16QAM	25	0	21.03	21.17	21.27	22	2
10	16QAM	25	12	21.02	21.19	21.36		
10	16QAM	25	25	20.95	21.12	21.29		
10	16QAM	50	0	21.03	21.17	21.35		
10	64QAM	1	0	21.22	21.31	21.51	22	2
10	64QAM	1	25	21.12	21.28	21.46		
10	64QAM	1	49	21.07	21.25	21.47		
10	64QAM	25	0	20.03	20.20	20.28	21	3
10	64QAM	25	12	20.03	20.17	20.39		
10	64QAM	25	25	19.97	20.12	20.29		
10	64QAM	50	0	20.01	20.18	20.36		
Channel				18625	18900	19175	Tune-up limit (dBm)	MPR (dB)
Frequency (MHz)				1852.5	1880	1907.5		
5	QPSK	1	0	22.98	23.14	23.37	24	0
5	QPSK	1	12	22.94	23.08	23.28		
5	QPSK	1	24	22.92	23.07	23.30		
5	QPSK	12	0	22.00	22.14	22.32	23	1
5	QPSK	12	7	22.01	22.15	22.35		
5	QPSK	12	13	21.93	22.12	22.32		
5	QPSK	25	0	21.94	22.12	22.31		
5	16QAM	1	0	22.32	22.50	22.64	23	1
5	16QAM	1	12	22.30	22.46	22.62		
5	16QAM	1	24	22.24	22.40	22.54		
5	16QAM	12	0	21.02	21.18	21.37	22	2
5	16QAM	12	7	21.02	21.15	21.36		
5	16QAM	12	13	20.94	21.11	21.30		
5	16QAM	25	0	20.97	21.13	21.34		
5	64QAM	1	0	21.21	21.34	21.52	22	2
5	64QAM	1	12	21.14	21.33	21.48		
5	64QAM	1	24	21.07	21.27	21.49		
5	64QAM	12	0	20.04	20.17	20.36	21	3
5	64QAM	12	7	20.06	20.21	20.38		
5	64QAM	12	13	19.99	20.16	20.34		
5	64QAM	25	0	19.96	20.17	20.32		
Channel				18615	18900	19185	Tune-up limit (dBm)	MPR (dB)
Frequency (MHz)				1851.5	1880	1908.5		
3	QPSK	1	0	22.93	23.08	23.26	24	0
3	QPSK	1	8	22.90	23.05	23.24		
3	QPSK	1	14	22.86	23.04	23.24		
3	QPSK	8	0	21.93	22.09	22.27	23	1
3	QPSK	8	4	21.93	22.09	22.29		
3	QPSK	8	7	21.91	22.07	22.24		
3	QPSK	15	0	21.89	22.11	22.26		
3	16QAM	1	0	22.21	22.41	22.58	23	1
3	16QAM	1	8	22.22	22.42	22.54		
3	16QAM	1	14	22.22	22.39	22.48		
3	16QAM	8	0	20.99	21.16	21.34	22	2
3	16QAM	8	4	21.01	21.18	21.36		
3	16QAM	8	7	20.97	21.12	21.31		
3	16QAM	15	0	20.96	21.12	21.31		
3	64QAM	1	0	21.11	21.31	21.50	22	2



**FCC SAR TEST REPORT**

**Report No. : FA081931-01**

3	64QAM	1	8	21.11	21.25	21.46	21	3
3	64QAM	1	14	21.05	21.24	21.44		
3	64QAM	8	0	19.99	20.14	20.33		
3	64QAM	8	4	19.99	20.16	20.32		
3	64QAM	8	7	19.95	20.11	20.28		
3	64QAM	15	0	19.93	20.11	20.26		
Channel				18607	18900	19193	Tune-up limit (dBm)	MPR (dB)
Frequency (MHz)				1850.7	1880	1909.3		
1.4	QPSK	1	0	22.86	23.04	23.18	24	0
1.4	QPSK	1	3	22.92	23.06	23.25		
1.4	QPSK	1	5	22.84	23.00	23.14		
1.4	QPSK	3	0	22.87	23.06	23.22		
1.4	QPSK	3	1	22.94	23.10	23.29		
1.4	QPSK	3	3	22.87	23.05	23.22		
1.4	QPSK	6	0	21.86	22.02	22.18	23	1
1.4	16QAM	1	0	22.17	22.32	22.50	23	1
1.4	16QAM	1	3	22.22	22.35	22.55		
1.4	16QAM	1	5	22.12	22.31	22.42		
1.4	16QAM	3	0	21.92	22.08	22.26		
1.4	16QAM	3	1	21.95	22.13	22.29		
1.4	16QAM	3	3	21.93	22.07	22.24		
1.4	16QAM	6	0	20.90	21.06	21.26	22	2
1.4	64QAM	1	0	21.01	21.22	21.37	22	2
1.4	64QAM	1	3	21.05	21.23	21.44		
1.4	64QAM	1	5	20.98	21.17	21.34		
1.4	64QAM	3	0	21.03	21.20	21.37		
1.4	64QAM	3	1	21.08	21.26	21.41		
1.4	64QAM	3	3	21.03	21.19	21.37		
1.4	64QAM	6	0	19.87	20.03	20.23	21	3



<LTE Band 4>

BW [MHz]	Modulation	RB Size	RB Offset	Power Low Ch. / Freq.	Power Middle Ch. / Freq.	Power High Ch. / Freq.	Tune-up limit (dBm)	MPR (dB)
Channel				20050	20175	20300		
Frequency (MHz)				1720	1732.5	1745		
20	QPSK	1	0	23.56	23.65	23.64	24	0
20	QPSK	1	49	23.45	23.42	23.47		
20	QPSK	1	99	23.39	23.35	23.40		
20	QPSK	50	0	22.55	22.63	22.60	23	1
20	QPSK	50	24	22.56	22.53	22.60		
20	QPSK	50	50	22.49	22.45	22.54		
20	QPSK	100	0	22.56	22.62	22.58	23	1
20	16QAM	1	0	22.91	22.97	22.94		
20	16QAM	1	49	22.81	22.74	22.80		
20	16QAM	1	99	22.69	22.65	22.74	22	2
20	16QAM	50	0	21.57	21.62	21.60		
20	16QAM	50	24	21.57	21.54	21.60		
20	16QAM	50	50	21.48	21.45	21.53	22	2
20	16QAM	100	0	21.54	21.52	21.56		
20	64QAM	1	0	21.77	21.86	21.85		
20	64QAM	1	49	21.64	21.64	21.69	22	2
20	64QAM	1	99	21.62	21.50	21.62		
20	64QAM	50	0	20.55	20.64	20.59		
20	64QAM	50	24	20.54	20.53	20.59	21	3
20	64QAM	50	50	20.50	20.44	20.53		
20	64QAM	100	0	20.56	20.55	20.61		
Channel				20025	20175	20325		
Frequency (MHz)				1717.5	1732.5	1747.5		
15	QPSK	1	0	23.58	23.64	23.62	24	0
15	QPSK	1	37	23.36	23.44	23.50		
15	QPSK	1	74	23.45	23.40	23.45		
15	QPSK	36	0	22.52	22.61	22.67	23	1
15	QPSK	36	20	22.48	22.53	22.59		
15	QPSK	36	39	22.49	22.46	22.53		
15	QPSK	75	0	22.46	22.55	22.59	23	1
15	16QAM	1	0	22.91	22.98	22.91		
15	16QAM	1	37	22.71	22.73	22.79		
15	16QAM	1	74	22.76	22.74	22.79	22	2
15	16QAM	36	0	21.55	21.58	21.67		
15	16QAM	36	20	21.46	21.53	21.58		
15	16QAM	36	39	21.48	21.46	21.52	22	2
15	16QAM	75	0	21.47	21.52	21.59		
15	64QAM	1	0	21.81	21.86	21.81		
15	64QAM	1	37	21.57	21.65	21.65	22	2
15	64QAM	1	74	21.66	21.64	21.65		
15	64QAM	36	0	20.53	20.63	20.69		
15	64QAM	36	20	20.51	20.53	20.59	21	3
15	64QAM	36	39	20.53	20.46	20.56		
15	64QAM	75	0	20.48	20.51	20.57		
Channel				20000	20175	20350		
Frequency (MHz)				1715	1732.5	1750		
10	QPSK	1	0	23.47	23.56	23.61	24	0
10	QPSK	1	25	23.38	23.44	23.48		
10	QPSK	1	49	23.45	23.38	23.44		
10	QPSK	25	0	22.51	22.55	22.58	23	1
10	QPSK	25	12	22.44	22.53	22.55		



**FCC SAR TEST REPORT**

**Report No. : FA081931-01**

10	QPSK	25	25	22.42	22.47	22.51		
10	QPSK	50	0	22.43	22.49	22.55		
10	16QAM	1	0	22.79	22.86	22.88	23	1
10	16QAM	1	25	22.70	22.75	22.79		
10	16QAM	1	49	22.77	22.70	22.77		
10	16QAM	25	0	21.49	21.54	21.60	22	2
10	16QAM	25	12	21.47	21.52	21.58		
10	16QAM	25	25	21.41	21.48	21.53		
10	16QAM	50	0	21.50	21.51	21.58	22	2
10	64QAM	1	0	21.65	21.69	21.79		
10	64QAM	1	25	21.60	21.63	21.69		
10	64QAM	1	49	21.62	21.56	21.61	21	3
10	64QAM	25	0	20.49	20.55	20.61		
10	64QAM	25	12	20.47	20.52	20.58		
10	64QAM	25	25	20.41	20.47	20.50	21	3
10	64QAM	50	0	20.48	20.51	20.57		
Channel				19975	20175	20375		
Frequency (MHz)				1712.5	1732.5	1752.5		
5	QPSK	1	0	23.42	23.47	23.53	24	0
5	QPSK	1	12	23.36	23.40	23.44		
5	QPSK	1	24	23.32	23.41	23.43		
5	QPSK	12	0	22.47	22.48	22.56	23	1
5	QPSK	12	7	22.47	22.50	22.51		
5	QPSK	12	13	22.39	22.42	22.49		
5	QPSK	25	0	22.42	22.46	22.51	23	1
5	16QAM	1	0	22.73	22.81	22.86		
5	16QAM	1	12	22.69	22.74	22.78		
5	16QAM	1	24	22.69	22.72	22.76	22	2
5	16QAM	12	0	21.48	21.50	21.57		
5	16QAM	12	7	21.46	21.52	21.55		
5	16QAM	12	13	21.40	21.45	21.48	22	2
5	16QAM	25	0	21.44	21.48	21.51		
5	64QAM	1	0	21.59	21.69	21.71		
5	64QAM	1	12	21.54	21.60	21.63	22	2
5	64QAM	1	24	21.52	21.62	21.61		
5	64QAM	12	0	20.48	20.52	20.58		
5	64QAM	12	7	20.49	20.53	20.58	21	3
5	64QAM	12	13	20.46	20.47	20.57		
5	64QAM	25	0	20.43	20.46	20.52		
Channel				19965	20175	20385	Tune-up limit (dBm)	MPR (dB)
Frequency (MHz)				1711.5	1732.5	1753.5		
3	QPSK	1	0	23.34	23.40	23.44	24	0
3	QPSK	1	8	23.33	23.38	23.43		
3	QPSK	1	14	23.28	23.36	23.40		
3	QPSK	8	0	22.42	22.44	22.47	23	1
3	QPSK	8	4	22.43	22.44	22.51		
3	QPSK	8	7	22.36	22.39	22.49		
3	QPSK	15	0	22.37	22.42	22.50	23	1
3	16QAM	1	0	22.63	22.73	22.78		
3	16QAM	1	8	22.63	22.72	22.77		
3	16QAM	1	14	22.62	22.68	22.70	22	2
3	16QAM	8	0	21.46	21.49	21.55		
3	16QAM	8	4	21.48	21.51	21.57		
3	16QAM	8	7	21.43	21.46	21.52	22	2
3	16QAM	15	0	21.40	21.44	21.50		
3	64QAM	1	0	21.54	21.58	21.67		



**FCC SAR TEST REPORT**

**Report No. : FA081931-01**

3	64QAM	1	8	21.54	21.58	21.63	21	3
3	64QAM	1	14	21.52	21.54	21.63		
3	64QAM	8	0	20.42	20.48	20.50		
3	64QAM	8	4	20.44	20.50	20.57		
3	64QAM	8	7	20.42	20.44	20.51		
3	64QAM	15	0	20.41	20.43	20.53		
Channel				19957	20175	20393	Tune-up limit (dBm)	MPR (dB)
Frequency (MHz)				1710.7	1732.5	1754.3		
1.4	QPSK	1	0	23.26	23.32	23.36	24	0
1.4	QPSK	1	3	23.32	23.38	23.43		
1.4	QPSK	1	5	23.24	23.30	23.36		
1.4	QPSK	3	0	23.30	23.35	23.39		
1.4	QPSK	3	1	23.35	23.38	23.44		
1.4	QPSK	3	3	23.28	23.35	23.38		
1.4	QPSK	6	0	22.29	22.35	22.39	23	1
1.4	16QAM	1	0	22.54	22.59	22.65	23	1
1.4	16QAM	1	3	22.63	22.68	22.75		
1.4	16QAM	1	5	22.53	22.60	22.66		
1.4	16QAM	3	0	22.33	22.39	22.42		
1.4	16QAM	3	1	22.37	22.45	22.47		
1.4	16QAM	3	3	22.29	22.37	22.40		
1.4	16QAM	6	0	21.36	21.43	21.48	22	2
1.4	64QAM	1	0	21.45	21.47	21.53	22	2
1.4	64QAM	1	3	21.45	21.54	21.61		
1.4	64QAM	1	5	21.43	21.47	21.51		
1.4	64QAM	3	0	21.44	21.50	21.56		
1.4	64QAM	3	1	21.50	21.57	21.60		
1.4	64QAM	3	3	21.43	21.50	21.53		
1.4	64QAM	6	0	20.31	20.35	20.41	21	3



**<LTE Band 5>**

BW [MHz]	Modulation	RB Size	RB Offset	Power Low Ch. / Freq.	Power Middle Ch. / Freq.	Power High Ch. / Freq.	Tune-up limit (dBm)	MPR (dB)
Channel				20450	20525	20600		
Frequency (MHz)				829	836.5	844		
10	QPSK	1	0	23.07	23.12	23.08	24	0
10	QPSK	1	25	23.05	23.11	23.02		
10	QPSK	1	49	23.01	23.02	22.90		
10	QPSK	25	0	22.09	22.18	22.10	23	1
10	QPSK	25	12	22.17	22.17	22.10		
10	QPSK	25	25	22.09	22.10	22.00		
10	QPSK	50	0	22.13	22.15	22.07	23	1
10	16QAM	1	0	22.39	22.38	22.35		
10	16QAM	1	25	22.45	22.43	22.29		
10	16QAM	1	49	22.35	22.28	22.20	22	2
10	16QAM	25	0	21.10	21.19	21.07		
10	16QAM	25	12	21.19	21.18	21.08		
10	16QAM	25	25	21.11	21.10	21.01	22	2
10	16QAM	50	0	21.19	21.19	21.07		
10	64QAM	1	0	21.24	21.29	21.29		
10	64QAM	1	25	21.31	21.37	21.18	22	2
10	64QAM	1	49	21.23	21.20	21.14		
10	64QAM	25	0	20.08	20.21	20.10		
10	64QAM	25	12	20.21	20.20	20.10	21	3
10	64QAM	25	25	20.11	20.15	20.03		
10	64QAM	50	0	20.18	20.19	20.08		
Channel				20425	20525	20625	Tune-up limit (dBm)	MPR (dB)
Frequency (MHz)				826.5	836.5	846.5		
5	QPSK	1	0	23.04	23.10	23.02	24	0
5	QPSK	1	12	22.97	23.07	22.96		
5	QPSK	1	24	23.10	23.07	22.92		
5	QPSK	12	0	22.07	22.15	22.05	23	1
5	QPSK	12	7	22.07	22.14	22.04		
5	QPSK	12	13	22.15	22.13	22.00		
5	QPSK	25	0	22.06	22.12	21.99	23	1
5	16QAM	1	0	22.37	22.43	22.30		
5	16QAM	1	12	22.32	22.37	22.27		
5	16QAM	1	24	22.40	22.34	22.17	22	2
5	16QAM	12	0	21.09	21.20	21.04		
5	16QAM	12	7	21.08	21.21	21.03		
5	16QAM	12	13	21.16	21.12	20.99	22	2
5	16QAM	25	0	21.08	21.15	21.00		
5	64QAM	1	0	21.30	21.36	21.21		
5	64QAM	1	12	21.25	21.36	21.20	22	2
5	64QAM	1	24	21.28	21.24	21.14		
5	64QAM	12	0	20.12	20.19	20.08		
5	64QAM	12	7	20.14	20.20	20.08	21	3
5	64QAM	12	13	20.19	20.17	20.03		
5	64QAM	25	0	20.08	20.14	20.01		
Channel				20415	20525	20635	Tune-up limit (dBm)	MPR (dB)
Frequency (MHz)				825.5	836.5	847.5		
3	QPSK	1	0	23.01	23.11	22.96	24	0
3	QPSK	1	8	22.98	23.07	22.92		
3	QPSK	1	14	22.98	23.05	22.90		
3	QPSK	8	0	22.04	22.12	21.96	23	1
3	QPSK	8	4	22.08	22.11	22.01		





3	QPSK	8	7	22.04	22.07	21.97		
3	QPSK	15	0	22.05	22.07	21.96		
3	16QAM	1	0	22.33	22.40	22.25	23	1
3	16QAM	1	8	22.32	22.39	22.27		
3	16QAM	1	14	22.28	22.33	22.20		
3	16QAM	8	0	21.11	21.16	21.05	22	2
3	16QAM	8	4	21.14	21.19	21.05		
3	16QAM	8	7	21.11	21.15	21.00		
3	16QAM	15	0	21.07	21.12	20.99		
3	64QAM	1	0	21.23	21.28	21.12	22	2
3	64QAM	1	8	21.19	21.30	21.14		
3	64QAM	1	14	21.20	21.28	21.12		
3	64QAM	8	0	20.10	20.17	20.03	21	3
3	64QAM	8	4	20.10	20.17	20.04		
3	64QAM	8	7	20.09	20.13	19.99		
3	64QAM	15	0	20.07	20.13	19.98		
Channel				20407	20525	20643		
Frequency (MHz)				824.7	836.5	848.3		
1.4	QPSK	1	0	22.95	23.01	22.84	24	0
1.4	QPSK	1	3	23.00	23.06	22.92		
1.4	QPSK	1	5	22.93	22.98	22.83		
1.4	QPSK	3	0	22.98	23.02	22.90		
1.4	QPSK	3	1	23.01	23.07	22.96		
1.4	QPSK	3	3	22.99	23.06	22.89		
1.4	QPSK	6	0	21.96	22.03	21.88	23	1
1.4	16QAM	1	0	22.25	22.29	22.17	23	1
1.4	16QAM	1	3	22.30	22.34	22.19		
1.4	16QAM	1	5	22.26	22.28	22.11		
1.4	16QAM	3	0	22.02	22.07	21.92		
1.4	16QAM	3	1	22.08	22.09	21.96		
1.4	16QAM	3	3	22.00	22.03	21.90		
1.4	16QAM	6	0	21.06	21.10	20.95	22	2
1.4	64QAM	1	0	21.12	21.18	21.06	22	2
1.4	64QAM	1	3	21.16	21.24	21.08		
1.4	64QAM	1	5	21.11	21.17	21.02		
1.4	64QAM	3	0	21.16	21.20	21.04		
1.4	64QAM	3	1	21.18	21.25	21.07		
1.4	64QAM	3	3	21.12	21.18	21.02		
1.4	64QAM	6	0	20.00	20.05	19.89	21	3



<LTE Band 7>

BW [MHz]	Modulation	RB Size	RB Offset	Power Low Ch. / Freq.	Power Middle Ch. / Freq.	Power High Ch. / Freq.	Tune-up limit (dBm)	MPR (dB)
Channel				20850	21100	21350		
Frequency (MHz)				2510	2535	2560		
20	QPSK	1	0	22.28	22.19	22.30	23	0
20	QPSK	1	49	22.10	22.15	22.13		
20	QPSK	1	99	22.14	22.17	22.18		
20	QPSK	50	0	21.20	21.21	21.23	22	1
20	QPSK	50	24	21.17	21.16	21.19		
20	QPSK	50	50	21.19	21.12	21.16		
20	QPSK	100	0	21.18	21.15	21.20	22	1
20	16QAM	1	0	21.60	21.52	21.59		
20	16QAM	1	49	21.44	21.49	21.44		
20	16QAM	1	99	21.43	21.50	21.40	21	2
20	16QAM	50	0	20.35	20.29	20.24		
20	16QAM	50	24	20.23	20.25	20.23		
20	16QAM	50	50	20.20	20.21	20.17	21	2
20	16QAM	100	0	20.21	20.22	20.19		
20	64QAM	1	0	20.52	20.43	20.52		
20	64QAM	1	49	20.33	20.39	20.34	21	2
20	64QAM	1	99	20.37	20.37	20.33		
20	64QAM	50	0	19.33	19.27	19.27		
20	64QAM	50	24	19.22	19.26	19.22	20	3
20	64QAM	50	50	19.21	19.24	19.20		
20	64QAM	100	0	19.21	19.24	19.24		
Channel				20825	21100	21375	Tune-up limit (dBm)	MPR (dB)
Frequency (MHz)				2507.5	2535	2562.5		
15	QPSK	1	0	22.28	22.25	22.23	23	0
15	QPSK	1	37	22.23	22.18	22.15		
15	QPSK	1	74	22.16	22.19	22.17		
15	QPSK	36	0	21.31	21.21	21.20	22	1
15	QPSK	36	20	21.29	21.26	21.21		
15	QPSK	36	39	21.19	21.20	21.17		
15	QPSK	75	0	21.32	21.22	21.20	22	1
15	16QAM	1	0	21.62	21.54	21.52		
15	16QAM	1	37	21.61	21.49	21.43		
15	16QAM	1	74	21.50	21.52	21.46	21	2
15	16QAM	36	0	20.34	20.22	20.21		
15	16QAM	36	20	20.37	20.28	20.24		
15	16QAM	36	39	20.18	20.21	20.20	21	2
15	16QAM	75	0	20.31	20.25	20.20		
15	64QAM	1	0	20.53	20.48	20.44		
15	64QAM	1	37	20.42	20.39	20.34	21	2
15	64QAM	1	74	20.35	20.40	20.36		
15	64QAM	36	0	19.32	19.26	19.25		
15	64QAM	36	20	19.36	19.30	19.27	20	3
15	64QAM	36	39	19.20	19.23	19.20		
15	64QAM	75	0	19.30	19.23	19.20		
Channel				20800	21100	21400	Tune-up limit (dBm)	MPR (dB)
Frequency (MHz)				2505	2535	2565		
10	QPSK	1	0	22.25	22.19	22.18	23	0
10	QPSK	1	25	22.23	22.16	22.13		
10	QPSK	1	49	22.10	22.17	22.13		
10	QPSK	25	0	21.25	21.22	21.19	22	1
10	QPSK	25	12	21.24	21.24	21.19		



**FCC SAR TEST REPORT**

**Report No. : FA081931-01**

10	QPSK	25	25	21.27	21.18	21.16		
10	QPSK	50	0	21.26	21.20	21.16		
10	16QAM	1	0	21.54	21.46	21.48	22	1
10	16QAM	1	25	21.51	21.47	21.43		
10	16QAM	1	49	21.43	21.48	21.48		
10	16QAM	25	0	20.26	20.21	20.19	21	2
10	16QAM	25	12	20.30	20.22	20.21		
10	16QAM	25	25	20.24	20.19	20.15		
10	16QAM	50	0	20.29	20.22	20.18		
10	64QAM	1	0	20.46	20.37	20.33	21	2
10	64QAM	1	25	20.44	20.38	20.36		
10	64QAM	1	49	20.29	20.34	20.29		
10	64QAM	25	0	19.27	19.22	19.21	20	3
10	64QAM	25	12	19.30	19.25	19.20		
10	64QAM	25	25	19.24	19.20	19.18		
10	64QAM	50	0	19.28	19.23	19.17		
Channel				20775	21100	21425	Tune-up limit (dBm)	MPR (dB)
Frequency (MHz)				2502.5	2535	2567.5		
5	QPSK	1	0	22.18	22.14	22.13	23	0
5	QPSK	1	12	22.19	22.14	22.13		
5	QPSK	1	24	22.19	22.11	22.11		
5	QPSK	12	0	21.22	21.20	21.13	22	1
5	QPSK	12	7	21.25	21.21	21.15		
5	QPSK	12	13	21.19	21.17	21.12		
5	QPSK	25	0	21.19	21.16	21.13		
5	16QAM	1	0	21.50	21.45	21.45	22	1
5	16QAM	1	12	21.53	21.46	21.44		
5	16QAM	1	24	21.47	21.46	21.40		
5	16QAM	12	0	20.28	20.19	20.15	21	2
5	16QAM	12	7	20.30	20.25	20.19		
5	16QAM	12	13	20.27	20.19	20.16		
5	16QAM	25	0	20.25	20.19	20.15		
5	64QAM	1	0	20.43	20.33	20.33	21	2
5	64QAM	1	12	20.37	20.34	20.33		
5	64QAM	1	24	20.34	20.31	20.27		
5	64QAM	12	0	19.27	19.22	19.21	20	3
5	64QAM	12	7	19.31	19.26	19.24		
5	64QAM	12	13	19.28	19.21	19.18		
5	64QAM	25	0	19.22	19.19	19.16		



<LTE Band 12>

BW [MHz]	Modulation	RB Size	RB Offset	Power Low Ch. / Freq.	Power Middle Ch. / Freq.	Power High Ch. / Freq.	Tune-up limit (dBm)	MPR (dB)
Channel				23060	23095	23130		
Frequency (MHz)				704	707.5	711		
10	QPSK	1	0	23.19	23.06	23.12	24	0
10	QPSK	1	25	23.04	23.02	23.07		
10	QPSK	1	49	23.13	23.05	23.11		
10	QPSK	25	0	22.22	22.16	22.14	23	1
10	QPSK	25	12	22.14	22.11	22.13		
10	QPSK	25	25	22.14	22.15	22.11		
10	QPSK	50	0	22.25	22.16	22.13	23	1
10	16QAM	1	0	22.38	22.28	22.36		
10	16QAM	1	25	22.30	22.40	22.33		
10	16QAM	1	49	22.37	22.32	22.35	22	2
10	16QAM	25	0	21.27	21.12	21.16		
10	16QAM	25	12	21.18	21.23	21.19		
10	16QAM	25	25	21.13	21.18	21.13	22	2
10	16QAM	50	0	21.28	21.20	21.17		
10	64QAM	1	0	21.38	21.20	21.23		
10	64QAM	1	25	21.28	21.32	21.28	22	2
10	64QAM	1	49	21.27	21.29	21.28		
10	64QAM	25	0	20.27	20.14	20.17		
10	64QAM	25	12	20.20	20.21	20.19	21	3
10	64QAM	25	25	20.12	20.19	20.14		
10	64QAM	50	0	20.29	20.22	20.16		
Channel				23035	23095	23155	Tune-up limit (dBm)	MPR (dB)
Frequency (MHz)				701.5	707.5	713.5		
5	QPSK	1	0	23.18	23.03	23.04	24	0
5	QPSK	1	12	23.15	23.04	23.01		
5	QPSK	1	24	23.05	23.07	23.08		
5	QPSK	12	0	22.26	22.14	22.12	23	1
5	QPSK	12	7	22.26	22.17	22.14		
5	QPSK	12	13	22.12	22.13	22.16		
5	QPSK	25	0	22.20	22.18	22.08	23	1
5	16QAM	1	0	22.38	22.29	22.31		
5	16QAM	1	12	22.39	22.38	22.25		
5	16QAM	1	24	22.27	22.34	22.34	22	2
5	16QAM	12	0	21.35	21.17	21.17		
5	16QAM	12	7	21.30	21.20	21.13		
5	16QAM	12	13	21.17	21.17	21.20	22	2
5	16QAM	25	0	21.24	21.19	21.12		
5	64QAM	1	0	21.41	21.21	21.24		
5	64QAM	1	12	21.35	21.30	21.22	22	2
5	64QAM	1	24	21.23	21.28	21.26		
5	64QAM	12	0	20.30	20.24	20.16		
5	64QAM	12	7	20.31	20.24	20.17	21	3
5	64QAM	12	13	20.22	20.22	20.25		
5	64QAM	25	0	20.24	20.17	20.11		
Channel				23025	23095	23165	Tune-up limit (dBm)	MPR (dB)
Frequency (MHz)				700.5	707.5	714.5		
3	QPSK	1	0	23.17	22.97	22.93	24	0
3	QPSK	1	8	23.16	23.05	23.05		
3	QPSK	1	14	23.14	23.03	23.06		
3	QPSK	8	0	22.22	22.13	22.16	23	1
3	QPSK	8	4	22.24	22.17	22.20		



**FCC SAR TEST REPORT**

**Report No. : FA081931-01**

3	QPSK	8	7	22.19	22.11	22.19		
3	QPSK	15	0	22.20	22.12	22.15		
3	16QAM	1	0	22.38	22.24	22.21	23	1
3	16QAM	1	8	22.36	22.34	22.31		
3	16QAM	1	14	22.35	22.28	22.34		
3	16QAM	8	0	21.33	21.19	21.21	22	2
3	16QAM	8	4	21.29	21.23	21.23		
3	16QAM	8	7	21.26	21.18	21.23		
3	16QAM	15	0	21.27	21.16	21.19		
3	64QAM	1	0	21.37	21.19	21.17	22	2
3	64QAM	1	8	21.40	21.28	21.27		
3	64QAM	1	14	21.34	21.23	21.23		
3	64QAM	8	0	20.29	20.20	20.20	21	3
3	64QAM	8	4	20.28	20.21	20.22		
3	64QAM	8	7	20.24	20.18	20.19		
3	64QAM	15	0	20.22	20.16	20.20		
Channel				23017	23095	23173	Tune-up limit (dBm)	MPR (dB)
Frequency (MHz)				699.7	707.5	715.3		
1.4	QPSK	1	0	23.08	22.95	22.94	24	0
1.4	QPSK	1	3	23.11	23.02	23.02		
1.4	QPSK	1	5	23.06	22.95	22.96		
1.4	QPSK	3	0	23.17	22.99	23.00		
1.4	QPSK	3	1	23.10	23.05	23.05		
1.4	QPSK	3	3	23.16	23.00	23.01		
1.4	QPSK	6	0	22.16	22.03	22.06	23	1
1.4	16QAM	1	0	22.29	22.24	22.23	23	1
1.4	16QAM	1	3	22.38	22.29	22.30		
1.4	16QAM	1	5	22.26	22.24	22.24		
1.4	16QAM	3	0	22.12	22.02	22.06		
1.4	16QAM	3	1	22.14	22.10	22.08		
1.4	16QAM	3	3	22.10	22.03	22.05		
1.4	16QAM	6	0	21.21	21.13	21.15	22	2
1.4	64QAM	1	0	21.33	21.18	21.18	22	2
1.4	64QAM	1	3	21.33	21.24	21.24		
1.4	64QAM	1	5	21.28	21.20	21.18		
1.4	64QAM	3	0	21.26	21.16	21.15		
1.4	64QAM	3	1	21.30	21.20	21.20		
1.4	64QAM	3	3	21.26	21.16	21.15		
1.4	64QAM	6	0	20.17	20.06	20.07	21	3



<LTE Band 13>

BW [MHz]	Modulation	RB Size	RB Offset	Power Low Ch. / Freq.	Power Middle Ch. / Freq.	Power High Ch. / Freq.	Tune-up limit (dBm)	MPR (dB)
Channel				23230				
Frequency (MHz)				782				
10	QPSK	1	0		23.15		24	0
10	QPSK	1	25		23.14			
10	QPSK	1	49		23.05			
10	QPSK	25	0		22.21		23	1
10	QPSK	25	12		22.20			
10	QPSK	25	25		22.17			
10	QPSK	50	0		22.20		23	1
10	16QAM	1	0		22.37			
10	16QAM	1	25		22.44			
10	16QAM	1	49		22.36		22	2
10	16QAM	25	0		21.20			
10	16QAM	25	12		21.24			
10	16QAM	25	25		21.15		22	2
10	16QAM	50	0		21.21			
10	64QAM	1	0		21.30			
10	64QAM	1	25		21.35		22	2
10	64QAM	1	49		21.23			
10	64QAM	25	0		20.24			
10	64QAM	25	12		20.27		21	3
10	64QAM	25	25		20.17			
10	64QAM	50	0		20.22			
Channel				23205	23230	23255	Tune-up limit (dBm)	MPR (dB)
Frequency (MHz)				779.5	782	784.5		
5	QPSK	1	0	23.10	23.14	23.11	24	0
5	QPSK	1	12	23.05	23.11	23.08		
5	QPSK	1	24	23.14	23.07	23.05		
5	QPSK	12	0	22.14	22.21	22.15	23	1
5	QPSK	12	7	22.23	22.20	22.15		
5	QPSK	12	13	22.21	22.15	22.10		
5	QPSK	25	0	22.19	22.16	22.15	23	1
5	16QAM	1	0	22.36	22.45	22.44		
5	16QAM	1	12	22.44	22.41	22.38		
5	16QAM	1	24	22.44	22.38	22.35	22	2
5	16QAM	12	0	21.16	21.24	21.11		
5	16QAM	12	7	21.29	21.20	21.14		
5	16QAM	12	13	21.24	21.11	21.09	22	2
5	16QAM	25	0	21.21	21.19	21.12		
5	64QAM	1	0	21.30	21.38	21.36		
5	64QAM	1	12	21.35	21.31	21.27	22	2
5	64QAM	1	24	21.33	21.25	21.24		
5	64QAM	12	0	20.15	20.22	20.21		
5	64QAM	12	7	20.27	20.23	20.20	21	3
5	64QAM	12	13	20.25	20.22	20.17		
5	64QAM	25	0	20.22	20.20	20.14		



<LTE Band 26>

BW [MHz]	Modulation	RB Size	RB Offset	Power Low Ch. / Freq.	Power Middle Ch. / Freq.	Power High Ch. / Freq.	Tune-up limit (dBm)	MPR (dB)
Channel				26765	26865	26965		
Frequency (MHz)				821.5	831.5	841.5		
15	QPSK	1	0	23.07	23.10	23.15		
15	QPSK	1	37	23.03	23.08	23.07	24	0
15	QPSK	1	74	23.00	23.02	23.03	23	1
15	QPSK	36	0	22.07	22.14	22.15		
15	QPSK	36	20	22.06	22.13	22.12		
15	QPSK	36	39	22.04	22.09	22.05		
15	QPSK	75	0	22.10	22.11	22.14		
15	16QAM	1	0	22.40	22.39	22.46	23	1
15	16QAM	1	37	22.47	22.41	22.30		
15	16QAM	1	74	22.38	22.30	22.34		
15	16QAM	36	0	21.11	21.20	21.16	22	2
15	16QAM	36	20	21.18	21.15	21.14		
15	16QAM	36	39	21.07	21.19	21.01		
15	16QAM	75	0	21.13	21.10	21.09		
15	64QAM	1	0	21.31	21.31	21.35	22	2
15	64QAM	1	37	21.31	21.30	21.27		
15	64QAM	1	74	21.28	21.23	21.25		
15	64QAM	36	0	20.10	20.19	20.16	21	3
15	64QAM	36	20	20.20	20.19	20.17		
15	64QAM	36	39	20.11	20.17	20.06		
15	64QAM	75	0	20.13	20.11	20.09		
Channel				26740	26865	26990	Tune-up limit (dBm)	MPR (dB)
Frequency (MHz)				819	831.5	844		
10	QPSK	1	0	23.08	23.03	23.06	24	0
10	QPSK	1	25	23.11	23.05	22.99		
10	QPSK	1	49	23.03	23.07	23.00		
10	QPSK	25	0	22.07	22.10	22.10	23	1
10	QPSK	25	12	22.13	22.07	22.07		
10	QPSK	25	25	22.09	22.03	22.00		
10	QPSK	50	0	22.13	22.06	22.03		
10	16QAM	1	0	22.38	22.33	22.37	23	1
10	16QAM	1	25	22.42	22.37	22.26		
10	16QAM	1	49	22.37	22.36	22.31		
10	16QAM	25	0	21.07	21.10	21.05	22	2
10	16QAM	25	12	21.16	21.11	21.06		
10	16QAM	25	25	21.09	21.02	21.00		
10	16QAM	50	0	21.14	21.08	21.04		
10	64QAM	1	0	21.32	21.23	21.26	22	2
10	64QAM	1	25	21.30	21.26	21.23		
10	64QAM	1	49	21.25	21.29	21.23		
10	64QAM	25	0	20.07	20.12	20.09	21	3
10	64QAM	25	12	20.15	20.12	20.06		
10	64QAM	25	25	20.07	20.03	19.98		
10	64QAM	50	0	20.14	20.08	20.07		
Channel				26715	26865	27015	Tune-up limit (dBm)	MPR (dB)
Frequency (MHz)				816.5	831.5	846.5		
5	QPSK	1	0	23.00	23.08	23.00	24	0
5	QPSK	1	12	22.98	22.99	22.92		
5	QPSK	1	24	23.06	22.99	23.03		
5	QPSK	12	0	22.07	22.08	21.98	23	1
5	QPSK	12	7	22.05	22.09	21.97		



**FCC SAR TEST REPORT**

**Report No. : FA081931-01**

5	QPSK	12	13	22.04	22.02	22.04		
5	QPSK	25	0	22.04	22.05	21.99		
5	16QAM	1	0	22.33	22.39	22.27	23	1
5	16QAM	1	12	22.31	22.34	22.23		
5	16QAM	1	24	22.40	22.33	22.29		
5	16QAM	12	0	21.08	21.07	21.02	22	2
5	16QAM	12	7	21.08	21.09	21.03		
5	16QAM	12	13	21.04	21.04	21.10		
5	16QAM	25	0	21.05	21.05	20.98	22	2
5	64QAM	1	0	21.25	21.28	21.19		
5	64QAM	1	12	21.19	21.20	21.09		
5	64QAM	1	24	21.27	21.20	21.20	21	3
5	64QAM	12	0	20.11	20.11	20.08		
5	64QAM	12	7	20.12	20.11	20.06		
5	64QAM	12	13	20.06	20.08	20.10	21	3
5	64QAM	25	0	20.05	20.07	20.01		
Channel				26705	26865	27025		
Frequency (MHz)				815.5	831.5	847.5		
3	QPSK	1	0	23.01	23.02	22.93	24	0
3	QPSK	1	8	22.96	22.98	23.03		
3	QPSK	1	14	22.95	22.97	23.01		
3	QPSK	8	0	22.02	22.02	21.98	23	1
3	QPSK	8	4	22.04	22.06	22.06		
3	QPSK	8	7	22.00	21.99	22.01		
3	QPSK	15	0	21.99	22.03	22.04	23	1
3	16QAM	1	0	22.34	22.32	22.20		
3	16QAM	1	8	22.30	22.36	22.35		
3	16QAM	1	14	22.29	22.30	22.24	22	2
3	16QAM	8	0	21.09	21.10	21.02		
3	16QAM	8	4	21.10	21.12	21.13		
3	16QAM	8	7	21.05	21.08	21.07	22	2
3	16QAM	15	0	21.05	21.04	21.07		
3	64QAM	1	0	21.20	21.18	21.16		
3	64QAM	1	8	21.22	21.20	21.25	22	2
3	64QAM	1	14	21.14	21.17	21.20		
3	64QAM	8	0	20.05	20.07	20.01		
3	64QAM	8	4	20.08	20.09	20.12	21	3
3	64QAM	8	7	20.02	20.06	20.07		
3	64QAM	15	0	20.05	20.05	20.08		
Channel				26697	26865	27033	Tune-up limit (dBm)	MPR (dB)
Frequency (MHz)				814.7	831.5	848.3		
1.4	QPSK	1	0	22.94	22.96	22.95	24	0
1.4	QPSK	1	3	22.98	22.99	22.99		
1.4	QPSK	1	5	22.92	22.91	22.95		
1.4	QPSK	3	0	22.98	22.96	23.00	23	1
1.4	QPSK	3	1	22.99	23.02	23.05		
1.4	QPSK	3	3	22.95	22.95	22.99		
1.4	QPSK	6	0	21.96	21.95	21.98	23	1
1.4	16QAM	1	0	22.22	22.21	22.25	23	1
1.4	16QAM	1	3	22.29	22.30	22.26		
1.4	16QAM	1	5	22.22	22.23	22.20		
1.4	16QAM	3	0	22.01	21.97	22.01	23	1
1.4	16QAM	3	1	22.06	22.05	22.04		
1.4	16QAM	3	3	22.00	21.99	21.99		
1.4	16QAM	6	0	21.03	21.05	21.03	22	2
1.4	64QAM	1	0	21.10	21.15	21.11	22	2





**FCC SAR TEST REPORT**

**Report No. : FA081931-01**

1.4	64QAM	1	3	21.18	21.15	21.20		
1.4	64QAM	1	5	21.14	21.07	21.12		
1.4	64QAM	3	0	21.10	21.15	21.13		
1.4	64QAM	3	1	21.18	21.17	21.18		
1.4	64QAM	3	3	21.13	21.10	21.13		
1.4	64QAM	6	0	19.96	19.96	19.99	21	3



<LTE Band 66>

BW [MHz]	Modulation	RB Size	RB Offset	Power Low Ch. / Freq.	Power Middle Ch. / Freq.	Power High Ch. / Freq.	Tune-up limit (dBm)	MPR (dB)
Channel				132072	132322	132572		0
Frequency (MHz)				1720	1745	1770		
20	QPSK	1	0	23.61	23.66	23.65		
20	QPSK	1	49	23.37	23.50	23.49	24	0
20	QPSK	1	99	23.39	23.44	23.36		
20	QPSK	50	0	22.53	22.67	22.60		
20	QPSK	50	24	22.45	22.60	22.58	23	1
20	QPSK	50	50	22.49	22.51	22.50		
20	QPSK	100	0	22.49	22.63	22.61		
20	16QAM	1	0	22.91	22.97	22.93	23	1
20	16QAM	1	49	22.72	22.85	22.79		
20	16QAM	1	99	22.70	22.78	22.72		
20	16QAM	50	0	21.57	21.72	21.61	22	2
20	16QAM	50	24	21.49	21.64	21.58		
20	16QAM	50	50	21.51	21.55	21.49		
20	16QAM	100	0	21.46	21.62	21.57	22	2
20	64QAM	1	0	21.80	21.85	21.83		
20	64QAM	1	49	21.59	21.70	21.70		
20	64QAM	1	99	21.63	21.63	21.56	21	3
20	64QAM	50	0	20.56	20.73	20.61		
20	64QAM	50	24	20.47	20.64	20.58		
20	64QAM	50	50	20.51	20.55	20.51	21	3
20	64QAM	100	0	20.47	20.60	20.59		
Channel				132047	132322	132597		
Frequency (MHz)				1717.5	1745	1772.5		
15	QPSK	1	0	23.60	23.63	23.58		
15	QPSK	1	37	23.38	23.50	23.47	24	0
15	QPSK	1	74	23.45	23.49	23.43		
15	QPSK	36	0	22.53	22.68	22.66		
15	QPSK	36	20	22.43	22.63	22.58	23	1
15	QPSK	36	39	22.42	22.53	22.50		
15	QPSK	75	0	22.46	22.61	22.58		
15	16QAM	1	0	22.90	22.96	22.88	23	1
15	16QAM	1	37	22.74	22.85	22.76		
15	16QAM	1	74	22.81	22.78	22.74		
15	16QAM	36	0	21.54	21.69	21.65	22	2
15	16QAM	36	20	21.49	21.61	21.58		
15	16QAM	36	39	21.41	21.52	21.47		
15	16QAM	75	0	21.46	21.58	21.54	22	2
15	64QAM	1	0	21.83	21.95	21.80		
15	64QAM	1	37	21.60	21.72	21.69		
15	64QAM	1	74	21.66	21.68	21.66	21	3
15	64QAM	36	0	20.55	20.69	20.64		
15	64QAM	36	20	20.48	20.61	20.59		
15	64QAM	36	39	20.41	20.55	20.50	21	3
15	64QAM	75	0	20.46	20.61	20.53		
Channel				132022	132322	132622		
Frequency (MHz)				1715	1745	1775		
10	QPSK	1	0	23.50	23.61	23.57		
10	QPSK	1	25	23.39	23.51	23.46	24	0
10	QPSK	1	49	23.34	23.44	23.38		
10	QPSK	25	0	22.47	22.59	22.58		
10	QPSK	25	12	22.42	22.54	22.52	23	1



**FCC SAR TEST REPORT**

**Report No. : FA081931-01**

10	QPSK	25	25	22.42	22.53	22.45				
10	QPSK	50	0	22.43	22.54	22.51				
10	16QAM	1	0	22.79	22.92	22.85	23	1		
10	16QAM	1	25	22.70	22.78	22.75				
10	16QAM	1	49	22.63	22.78	22.68				
10	16QAM	25	0	21.47	21.60	21.55	22	2		
10	16QAM	25	12	21.47	21.57	21.53				
10	16QAM	25	25	21.39	21.50	21.47				
10	16QAM	50	0	21.44	21.57	21.51				
10	64QAM	1	0	21.71	21.84	21.77	22	2		
10	64QAM	1	25	21.56	21.69	21.68				
10	64QAM	1	49	21.50	21.68	21.62				
10	64QAM	25	0	20.47	20.60	20.54	21	3		
10	64QAM	25	12	20.44	20.58	20.52				
10	64QAM	25	25	20.40	20.51	20.49				
10	64QAM	50	0	20.45	20.59	20.53				
Channel				131997	132322	132647			Tune-up limit (dBm)	MPR (dB)
Frequency (MHz)				1712.5	1745	1777.5				
5	QPSK	1	0	23.43	23.54	23.47	24	0		
5	QPSK	1	12	23.36	23.46	23.40				
5	QPSK	1	24	23.33	23.46	23.40				
5	QPSK	12	0	22.39	22.57	22.49	23	1		
5	QPSK	12	7	22.43	22.51	22.50				
5	QPSK	12	13	22.37	22.52	22.44				
5	QPSK	25	0	22.37	22.54	22.46				
5	16QAM	1	0	22.78	22.86	22.77				
5	16QAM	1	12	22.71	22.80	22.73	23	1		
5	16QAM	1	24	22.68	22.80	22.68				
5	16QAM	12	0	21.46	21.58	21.49				
5	16QAM	12	7	21.44	21.54	21.47	22	2		
5	16QAM	12	13	21.37	21.53	21.42				
5	16QAM	25	0	21.43	21.55	21.47				
5	64QAM	1	0	21.64	21.73	21.70				
5	64QAM	1	12	21.54	21.67	21.59	22	2		
5	64QAM	1	24	21.49	21.67	21.57				
5	64QAM	12	0	20.44	20.60	20.51				
5	64QAM	12	7	20.46	20.59	20.53	21	3		
5	64QAM	12	13	20.42	20.54	20.48				
5	64QAM	25	0	20.40	20.53	20.46				
Channel				131987	132322	132657			Tune-up limit (dBm)	MPR (dB)
Frequency (MHz)				1711.5	1745	1778.5				
3	QPSK	1	0	23.35	23.49	23.41	24	0		
3	QPSK	1	8	23.30	23.45	23.35				
3	QPSK	1	14	23.29	23.43	23.36				
3	QPSK	8	0	22.39	22.52	22.39	23	1		
3	QPSK	8	4	22.39	22.54	22.46				
3	QPSK	8	7	22.36	22.50	22.39				
3	QPSK	15	0	22.33	22.50	22.42				
3	16QAM	1	0	22.65	22.77	22.69	23	1		
3	16QAM	1	8	22.68	22.78	22.68				
3	16QAM	1	14	22.62	22.72	22.64				
3	16QAM	8	0	21.44	21.58	21.48	22	2		
3	16QAM	8	4	21.44	21.58	21.48				
3	16QAM	8	7	21.41	21.54	21.44				
3	16QAM	15	0	21.39	21.54	21.42				
3	64QAM	1	0	21.52	21.67	21.56				



**FCC SAR TEST REPORT**

**Report No. : FA081931-01**

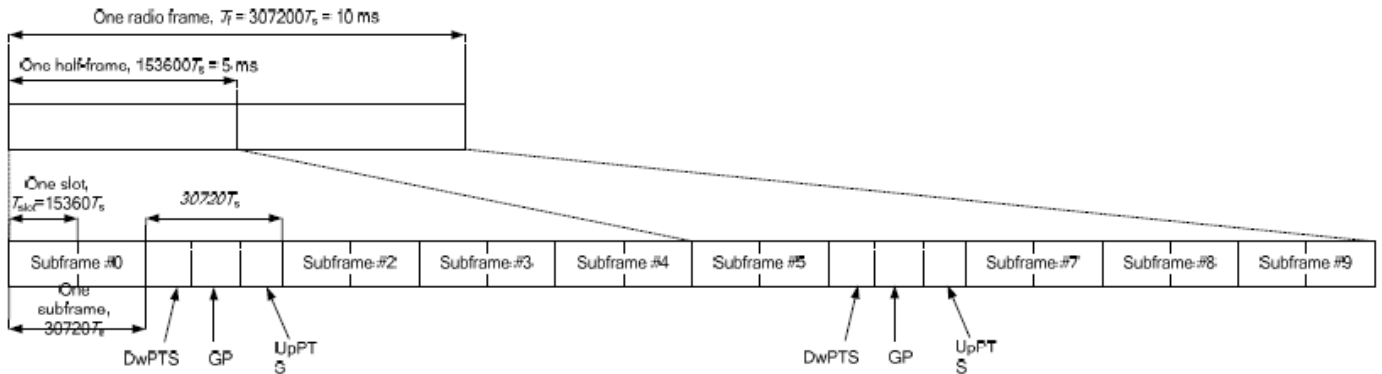
3	64QAM	1	8	21.54	21.66	21.60	21	3
3	64QAM	1	14	21.49	21.62	21.54		
3	64QAM	8	0	20.39	20.54	20.47		
3	64QAM	8	4	20.42	20.56	20.46		
3	64QAM	8	7	20.37	20.53	20.42		
3	64QAM	15	0	20.36	20.50	20.41		
Channel				131979	132322	132665	Tune-up limit (dBm)	MPR (dB)
Frequency (MHz)				1710.7	1745	1779.3		
1.4	QPSK	1	0	23.26	23.40	23.31	24	0
1.4	QPSK	1	3	23.34	23.47	23.37		
1.4	QPSK	1	5	23.25	23.37	23.29		
1.4	QPSK	3	0	23.31	23.40	23.33		
1.4	QPSK	3	1	23.37	23.45	23.41		
1.4	QPSK	3	3	23.29	23.43	23.35		
1.4	QPSK	6	0	22.29	22.42	22.34	23	1
1.4	16QAM	1	0	22.53	22.70	22.58	23	1
1.4	16QAM	1	3	22.67	22.76	22.66		
1.4	16QAM	1	5	22.57	22.67	22.59		
1.4	16QAM	3	0	22.31	22.44	22.40		
1.4	16QAM	3	1	22.39	22.51	22.45		
1.4	16QAM	3	3	22.32	22.44	22.36		
1.4	16QAM	6	0	21.34	21.49	21.43	22	2
1.4	64QAM	1	0	21.49	21.57	21.54	22	2
1.4	64QAM	1	3	21.48	21.66	21.53		
1.4	64QAM	1	5	21.43	21.56	21.50		
1.4	64QAM	3	0	21.47	21.60	21.49		
1.4	64QAM	3	1	21.48	21.62	21.55		
1.4	64QAM	3	3	21.43	21.57	21.46		
1.4	64QAM	6	0	20.29	20.42	20.37	21	3

**<TDD LTE SAR Measurement>**

TDD LTE configuration setup for SAR measurement

SAR was tested with a fixed periodic duty factor according to the highest transmission duty factor implemented for the device and supported by 3GPP.

- a. 3GPP TS 36.211 section 4.2 for Type 2 Frame Structure and Table 4.2-2 for uplink-downlink configurations
- b. "special subframe S" contains both uplink and downlink transmissions, it has been taken into consideration to determine the transmission duty factor according to the worst case uplink and downlink cyclic prefix requirements for UpPTS
- c. Establishing connections with base station simulators ensure a consistent means for testing SAR and recommended for evaluating SAR. The Anritsu MT8820C (firmware: #22.52#004) was used for LTE output power measurements and SAR testing.



**Figure 4.2-1: Frame structure type 2 (for 5 ms switch-point periodicity).**

**Table 4.2-2: Uplink-downlink configurations.**

Uplink-downlink configuration	Downlink-to-Uplink Switch-point periodicity	Subframe number									
		0	1	2	3	4	5	6	7	8	9
0	5 ms	D	S	U	U	U	D	S	U	U	U
1	5 ms	D	S	U	U	D	D	S	U	U	D
2	5 ms	D	S	U	D	D	D	S	U	D	D
3	10 ms	D	S	U	U	U	D	D	D	D	D
4	10 ms	D	S	U	U	D	D	D	D	D	D
5	10 ms	D	S	U	D	D	D	D	D	D	D
6	5 ms	D	S	U	U	U	D	S	U	U	D

**Table 4.2-1: Configuration of special subframe (lengths of DwPTS/GP/UpPTS).**

Special subframe configuration	Normal cyclic prefix in downlink			Extended cyclic prefix in downlink		
	DwPTS	UpPTS		DwPTS	UpPTS	
		Normal cyclic prefix in uplink	Extended cyclic prefix in uplink		Normal cyclic prefix in uplink	Extended cyclic prefix in uplink
0	$6592 \cdot T_s$	$2192 \cdot T_s$	$2560 \cdot T_s$	$7680 \cdot T_s$	$2192 \cdot T_s$	$2560 \cdot T_s$
1	$19760 \cdot T_s$			$20480 \cdot T_s$		
2	$21952 \cdot T_s$			$23040 \cdot T_s$		
3	$24144 \cdot T_s$			$25600 \cdot T_s$		
4	$26336 \cdot T_s$	$4384 \cdot T_s$	$5120 \cdot T_s$	$7680 \cdot T_s$	$4384 \cdot T_s$	$5120 \cdot T_s$
5	$6592 \cdot T_s$			$20480 \cdot T_s$		
6	$19760 \cdot T_s$			$23040 \cdot T_s$		
7	$21952 \cdot T_s$			$12800 \cdot T_s$		
8	$24144 \cdot T_s$			-		
9	$13168 \cdot T_s$	-	-	-	-	-

<b>Special subframe (30720·T<sub>s</sub>): Normal cyclic prefix in downlink (UpPTS)</b>			
	<b>Special subframe configuration</b>	<b>Normal cyclic prefix in uplink</b>	<b>Extended cyclic prefix in uplink</b>
<b>Uplink duty factor in one special subframe</b>	<b>0~4</b>	7.13%	8.33%
	<b>5~9</b>	14.3%	16.7%

<b>Special subframe(30720·T<sub>s</sub>): Extended cyclic prefix in downlink (UpPTS)</b>			
	<b>Special subframe configuration</b>	<b>Normal cyclic prefix in uplink</b>	<b>Extended cyclic prefix in uplink</b>
<b>Uplink duty factor in one special subframe</b>	<b>0~3</b>	7.13%	8.33%
	<b>4~7</b>	14.3%	16.7%

The highest duty factor is resulted from:

- i. Uplink-downlink configuration: 0. In a half-frame consisted of 5 subframes, uplink operation is in 3 uplink subframes and 1 special subframe.
- ii. special subframe configuration: 5-9 for normal cyclic prefix in downlink, 4-7 for extended cyclic prefix in downlink
- iii. for special subframe with extended cyclic prefix in uplink, the total uplink duty factor in one half-frame is:  $(3+0.167)/5 = 63.3\%$
- iv. for special subframe with normal cyclic prefix in uplink, the total uplink duty factor in one half-frame is:  $(3+0.143)/5 = 62.9\%$
- v. For TDD LTE SAR measurement, the duty cycle 1:1.59 (62.9 %) was used perform testing and considering the theoretical duty cycle of 63.3% for extended cyclic prefix in the uplink, and the theoretical duty cycle of 62.9% for normal cyclic prefix in uplink, a scaling factor of extended cyclic prefix  $63.3\%/62.9\% = 1.006$  is applied to scale-up the measured SAR result. The scaled TDD LTE SAR = measured SAR (W/kg)\* Tune-up Scaling Factor\* scaling factor for extended cyclic prefix.



<LTE Band 41>

BW [MHz]	Modulation	RB Size	RB Offset	Power Low Ch. / Freq.	Power Low Middle Ch. / Freq.	Power Middle Ch. / Freq.	Power High Middle Ch. / Freq.	Power High Ch. / Freq.	Tune-up limit (dBm)	MPR (dB)
Channel				39750	40185	40620	41055	41490		
Frequency (MHz)				2506	2549.5	2593	2636.5	2680		
20	QPSK	1	0	22.22	22.34	22.40	22.39	22.32	23	0
20	QPSK	1	49	22.18	22.09	22.24	22.14	22.05		
20	QPSK	1	99	22.11	22.09	22.22	22.11	22.00		
20	QPSK	50	0	21.25	21.22	21.33	21.25	21.22	22	1
20	QPSK	50	24	21.24	21.18	21.26	21.19	21.14		
20	QPSK	50	50	21.15	21.15	21.24	21.15	21.00		
20	QPSK	100	0	21.19	21.19	21.25	21.19	21.09	22	1
20	16QAM	1	0	21.39	21.48	21.50	21.46	21.46		
20	16QAM	1	49	21.30	21.20	21.32	21.22	21.20		
20	16QAM	1	99	21.37	21.23	21.34	21.19	21.07	21	2
20	16QAM	50	0	20.27	20.25	20.33	20.26	20.24		
20	16QAM	50	24	20.26	20.22	20.29	20.22	20.13		
20	16QAM	50	50	20.21	20.15	20.27	20.21	20.04	20	3
20	16QAM	100	0	20.22	20.20	20.31	20.19	20.12		
20	64QAM	1	0	20.05	19.96	20.06	20.09	20.10		
20	64QAM	1	49	19.87	19.83	19.99	19.83	19.80	21	2
20	64QAM	1	99	19.92	19.79	19.93	19.88	19.78		
20	64QAM	50	0	19.23	19.20	19.32	19.22	19.25		
20	64QAM	50	24	19.25	19.20	19.31	19.19	19.13	20	3
20	64QAM	50	50	19.19	19.17	19.25	19.15	19.06		
20	64QAM	100	0	19.26	19.18	19.34	19.21	19.16		
Channel				39725	40173	40620	41068	41515	Tune-up limit (dBm)	MPR (dB)
Frequency (MHz)				2503.5	2548.3	2593	2637.8	2682.5		
15	QPSK	1	0	22.17	22.27	22.28	22.19	22.19	23	0
15	QPSK	1	37	22.13	22.10	22.18	22.08	22.02		
15	QPSK	1	74	22.11	22.08	22.21	22.08	21.98		
15	QPSK	36	0	21.14	21.21	21.22	21.15	21.06	22	1
15	QPSK	36	20	21.14	21.12	21.25	21.14	21.09		
15	QPSK	36	39	21.13	21.11	21.18	21.12	20.97		
15	QPSK	75	0	21.12	21.13	21.25	21.15	21.04	22	1
15	16QAM	1	0	21.30	21.32	21.41	21.27	21.33		
15	16QAM	1	37	21.23	21.26	21.37	21.26	21.01		
15	16QAM	1	74	21.23	21.21	21.28	21.18	21.15	21	2
15	16QAM	36	0	20.13	20.21	20.22	20.14	20.01		
15	16QAM	36	20	20.13	20.11	20.19	20.11	20.01		
15	16QAM	36	39	20.09	20.04	20.17	20.06	19.96	20	3
15	16QAM	75	0	20.17	20.15	20.23	20.14	20.05		
15	64QAM	1	0	19.97	19.97	20.05	19.99	20.02		
15	64QAM	1	37	19.89	19.81	19.92	19.88	19.82	21	2
15	64QAM	1	74	19.92	19.80	19.99	19.84	19.83		
15	64QAM	36	0	19.15	19.21	19.25	19.15	19.03		
15	64QAM	36	20	19.15	19.11	19.22	19.14	19.01	20	3
15	64QAM	36	39	19.11	19.07	19.21	19.11	18.96		
15	64QAM	75	0	19.14	19.11	19.24	19.15	19.04		
Channel				39700	40160	40620	41080	41540	Tune-up limit (dBm)	MPR (dB)
Frequency (MHz)				2501	2547	2593	2639	2685		
10	QPSK	1	0	22.14	22.19	22.20	22.17	22.10	23	0
10	QPSK	1	25	22.11	22.09	22.20	22.12	22.03		
10	QPSK	1	49	22.12	22.03	22.20	22.12	22.05		



**FCC SAR TEST REPORT**

**Report No. : FA081931-01**

10	QPSK	25	0	21.08	21.18	21.22	21.15	21.10	22	1
10	QPSK	25	12	21.12	21.09	21.24	21.17	21.10		
10	QPSK	25	25	21.05	21.08	21.25	21.14	21.03		
10	QPSK	50	0	21.11	21.08	21.23	21.15	21.05		
10	16QAM	1	0	21.25	21.37	21.40	21.28	21.31	22	1
10	16QAM	1	25	21.17	21.13	21.28	21.16	21.20		
10	16QAM	1	49	21.18	21.13	21.30	21.13	21.17		
10	16QAM	25	0	20.11	20.20	20.27	20.17	20.14	21	2
10	16QAM	25	12	20.16	20.14	20.25	20.18	20.11		
10	16QAM	25	25	20.14	20.09	20.21	20.17	20.04		
10	16QAM	50	0	20.18	20.14	20.28	20.18	20.09		
10	64QAM	1	0	19.97	19.92	19.95	19.87	19.91	21	2
10	64QAM	1	25	19.80	19.67	19.87	19.83	19.83		
10	64QAM	1	49	19.85	19.74	19.93	19.80	19.78		
10	64QAM	25	0	19.16	19.26	19.26	19.19	19.14	20	3
10	64QAM	25	12	19.18	19.17	19.23	19.19	19.14		
10	64QAM	25	25	19.12	19.09	19.23	19.16	19.14		
10	64QAM	50	0	19.09	19.11	19.24	19.17	19.03		
Channel				39675	40148	40620	41093	41565	Tune-up limit (dBm)	MPR (dB)
Frequency (MHz)				2498.5	2545.8	2593	2640.30	2687.5		
5	QPSK	1	0	22.07	22.17	22.21	22.13	22.04	23	0
5	QPSK	1	12	22.06	22.04	22.25	22.09	22.01		
5	QPSK	1	24	22.03	22.01	22.13	22.06	21.95		
5	QPSK	12	0	21.05	21.14	21.23	21.13	21.00	22	1
5	QPSK	12	7	21.08	21.11	21.22	21.15	21.06		
5	QPSK	12	13	21.05	21.08	21.23	21.12	20.99		
5	QPSK	25	0	21.05	21.05	21.20	21.14	21.05		
5	16QAM	1	0	21.14	21.23	21.25	21.17	21.11	22	1
5	16QAM	1	12	21.19	21.17	21.42	21.23	21.06		
5	16QAM	1	24	21.17	21.20	21.35	21.12	21.16		
5	16QAM	12	0	20.12	20.15	20.19	20.17	20.10	21	2
5	16QAM	12	7	20.12	20.12	20.24	20.13	20.10		
5	16QAM	12	13	20.08	20.06	20.19	20.07	20.03		
5	16QAM	25	0	20.12	20.10	20.24	20.18	20.08		
5	64QAM	1	0	19.86	19.84	19.91	19.85	19.73	21	2
5	64QAM	1	12	19.88	19.78	19.94	19.80	19.79		
5	64QAM	1	24	19.87	19.77	19.88	19.86	19.82		
5	64QAM	12	0	19.11	19.21	19.18	19.14	19.07	20	3
5	64QAM	12	7	19.08	19.09	19.28	19.18	19.12		
5	64QAM	12	13	19.15	19.08	19.25	19.13	19.05		
5	64QAM	25	0	19.11	19.10	19.23	19.19	19.04		





<LTE Uplink carrier aggregation>

2CC Uplink Carrier Aggregation	
Number	Combination
1	7C
2	41C

<Intra-band>

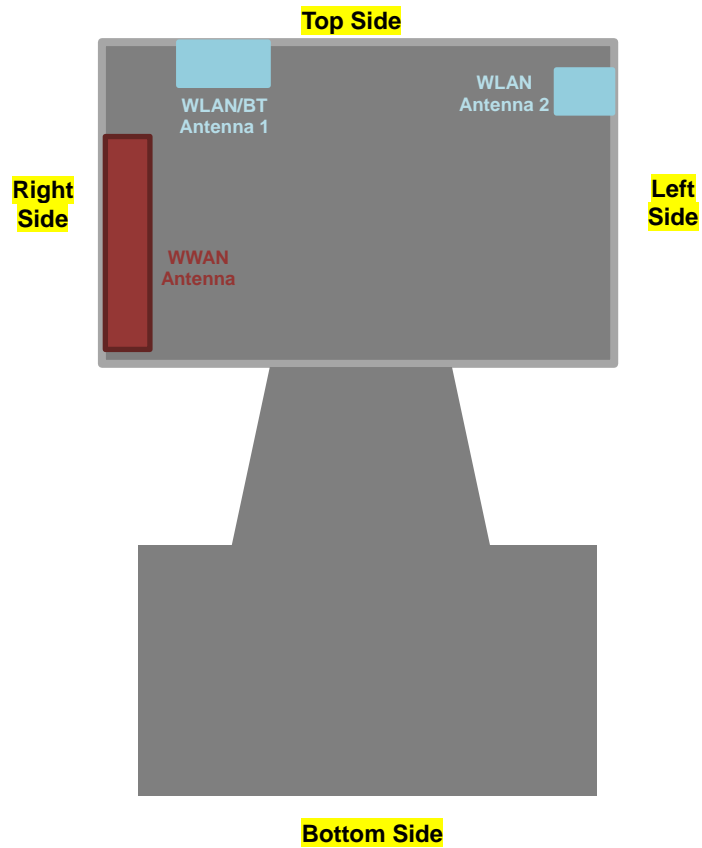
General Note:

- i. The device supports intra-band uplink carrier aggregation for LTE B7/B41 with a maximum of two 20MHz component carriers. For intra band contiguous carrier aggregation scenarios, 3GPP 36.101 table 6.2.2A-1 specifies that the aggregate maximum allowed output power is equivalent to the single carrier scenario. 3GPP 36.101 6.2.3A allows for several dB of MPR to be applied when not-contiguous RB allocation is implemented. The conducted power and MPR setting in this device are permanently implemented pre 3GPP requirement.
- ii. The device supports uplink carrier aggregation with a maximum of two 20MHz component carriers. For intra band contiguous carrier aggregation scenarios, 3GPP 36.101 table 6.2.2A-1 specifies that the aggregate maximum allowed output power is equivalent to the single carrier scenario. 3GPP 36.101 6.2.3A allows for several dB of MPR to be applied when not-contiguous RB allocation is implemented. The conducted power and MPR setting in this device are permanently implemented pre the 3GPP requirement.
- iii. According TCB workshop, the output power with uplink CA active was measured for the configuration with the highest reported SAR with single carrier for each exposure condition. The power was measured with wideband signal integration over both component carriers.
- iv. According TCB workshop, the output power with uplink CA active was measured for the configuration with the highest reported SAR with single carrier for each exposure condition. The power was measured with wideband signal integration over both component carriers.
- v. Additional SAR measurement for LTE UL CA whit other DL CA combinations active were not required since the maximum output power for this configuration was not > 0.25dB higher than the maximum output power for UL CA active.

CA_7C										
Combination 20MHz+20MHz (100RB+100RB)										
PCC Channel	SCC Channel	Modulation	PCC		SCC		Total RB Size	Target MPR Level (dB)	Measured Power (dBm)	Tune up Power (dBm)
			RB Size	RB offset	RB Size	RB offset				
20850	21048	QPSK	1	0	0	0	1	0	22.01	23
21100	20902	QPSK	1	0	1	99	2	0	22.15	23
21350	21152	QPSK	1	0	1	99	2	0	22.28	23

CA_41C										
Combination 20MHz+20MHz (100RB+100RB)										
PCC Channel	SCC Channel	Modulation	PCC		SCC		Total RB Size	Target MPR Level (dB)	Measured Power (dBm)	Tune up Power (dBm)
			RB Size	RB offset	RB Size	RB offset				
39750	39948	QPSK	1	0	0	0	1	0	22.27	23
40185	39987	QPSK	1	0	1	99	2	0	22.21	23
40620	40422	QPSK	1	0	1	99	2	0	22.29	23
41055	40857	QPSK	1	0	1	99	2	0	22.23	23
41490	41292	QPSK	1	0	1	99	2	0	22.22	23

### 11. Antenna Location



Back View



## 12. SAR Test Results

### General Note:

1. Per KDB 447498 D01v06, the reported SAR is the measured SAR value adjusted for maximum tune-up tolerance.
  - a. Tune-up scaling Factor = tune-up limit power (mW) / EUT RF power (mW), where tune-up limit is the maximum rated power among all production units.
  - b. For SAR testing of WLAN signal with non-100% duty cycle, the measured SAR is scaled-up by the duty cycle scaling factor which is equal to "1/(duty cycle)"
  - c. For WWAN: Reported SAR(W/kg)= Measured SAR(W/kg)\*Tune-up Scaling Factor
  - d. For TDD LTE SAR measurement, the duty cycle 1:1.59 (62.9 %) was used perform testing and considering the theoretical duty cycle of 63.3% for extended cyclic prefix in the uplink, and the theoretical duty cycle of 62.9% for normal cyclic prefix in uplink, a scaling factor of extended cyclic prefix  $63.3\%/62.9\% = 1.006$  is applied to scale-up the measured SAR result. The Reported TDD LTE SAR = measured SAR (W/kg)\* Tune-up Scaling Factor\* scaling factor for extended cyclic prefix.
2. Per KDB 447498 D01v06, for each exposure position, testing of other required channels within the operating mode of a frequency band is not required when the *reported* 1-g or 10-g SAR for the mid-band or highest output power channel is:
  - $\leq 0.8$  W/kg or 2.0 W/kg, for 1-g or 10-g respectively, when the transmission band is  $\leq 100$  MHz
  - $\leq 0.6$  W/kg or 1.5 W/kg, for 1-g or 10-g respectively, when the transmission band is between 100 MHz and 200 MHz
  - $\leq 0.4$  W/kg or 1.0 W/kg, for 1-g or 10-g respectively, when the transmission band is  $\geq 200$  MHz
3. Per KDB 865664 D01v01r04, for each frequency band, repeated SAR measurement is required only when the measured SAR is  $\geq 0.8$ W/kg.

### UMTS Note:

1. Per KDB 941225 D01v03r01, for SAR testing is measured using a 12.2 kbps RMC with TPC bits configured to all "1's".
2. Per KDB 941225 D01v03r01, RMC 12.2kbps setting is used to evaluate SAR. The maximum output power and tune-up tolerance specified for production units in HSDPA / HSUPA is  $\leq \frac{1}{4}$  dB higher than RMC 12.2Kbps or when the highest reported SAR of the RMC12.2Kbps is scaled by the ratio of specified maximum output power and tune-up tolerance of HSDPA / HSUPA to RMC12.2Kbps and the adjusted SAR is  $\leq 1.2$  W/kg, SAR measurement is not required for HSDPA / HSUPA, and according to the following RF output power, the output power results of the secondary modes (HSUPA, HSDPA, DC-HSDPA) are less than  $\frac{1}{4}$  dB higher than the primary modes; therefore, SAR measurement is not required for HSDPA / HSUPA.



**LTE Note:**

1. Per KDB 941225 D05v02r05, start with the largest channel bandwidth and measure SAR for QPSK with 1 RB allocation, using the RB offset and required test channel combination with the highest maximum output power for RB offsets at the upper edge, middle and lower edge of each required test channel.
2. Per KDB 941225 D05v02r05, 50% RB allocation for QPSK SAR testing follows 1RB QPSK allocation procedure.
3. Per KDB 941225 D05v02r05, For QPSK with 100% RB allocation, SAR is not required when the highest maximum output power for 100 % RB allocation is less than the highest maximum output power in 50% and 1 RB allocations and the highest reported SAR for 1 RB and 50% RB allocation are  $\leq 0.8$  W/kg. Otherwise, SAR is measured for the highest output power channel; and if the reported SAR is  $> 1.45$  W/kg, the remaining required test channels must also be tested.
4. Per KDB 941225 D05v02r05, 16QAM output power for each RB allocation configuration is  $>$  not  $\frac{1}{2}$  dB higher than the same configuration in QPSK and the reported SAR for the QPSK configuration is  $\leq 1.45$  W/kg; Per KDB 941225 D05v02r05, 16QAM SAR testing is not required.
5. Per KDB 941225 D05v02r05, Smaller bandwidth output power for each RB allocation configuration is  $>$  not  $\frac{1}{2}$  dB higher than the same configuration in the largest supported bandwidth, and the reported SAR for the largest supported bandwidth is  $\leq 1.45$  W/kg; Per KDB 941225 D05v02r05, smaller bandwidth SAR testing is not required.
6. For LTE B4/B5/B12/B26 the maximum bandwidth does not support three non-overlapping channels, per KDB 941225 D05v02r05, when a device supports overlapping channel assignment in a channel bandwidth configuration, the middle channel of the group of overlapping channels should be selected for testing.
7. LTE band 4/5 SAR test was covered by Band 66/26; according to TCB workshop, SAR test for overlapping LTE bands can be reduced if
  - a. The maximum output power, including tolerance, for the smaller band is  $\leq$  the larger band to qualify for the SAR test exclusion.
  - b. The channel bandwidth and other operating parameters for the smaller band are fully supported by the larger band.



**12.1 Body SAR**

**<WCDMA SAR>**

Plot No.	Band	Mode	Test Position	Gap (mm)	Ch.	Freq. (MHz)	Average Power (dBm)	Tune-Up Limit (dBm)	Tune-up Scaling Factor	Power Drift (dB)	Measured 1g SAR (W/kg)	Reported 1g SAR (W/kg)
	WCDMA II	RMC 12.2Kbps	Front	10mm	9538	1907.6	23.98	24.00	1.005	0.01	0.259	0.260
01	WCDMA II	RMC 12.2Kbps	Right Side	10mm	9538	1907.6	23.98	24.00	1.005	-0.02	0.785	0.789
	WCDMA II	RMC 12.2Kbps	Right Side	10mm	9262	1852.4	23.92	24.00	1.019	0.01	0.410	0.418
	WCDMA II	RMC 12.2Kbps	Right Side	10mm	9400	1880	23.90	24.00	1.023	-0.04	0.578	0.591
	WCDMA II	RMC 12.2Kbps	Top Side	10mm	9538	1907.6	23.98	24.00	1.005	0.1	0.001	0.001
	WCDMA IV	RMC 12.2Kbps	Front	10mm	1413	1732.6	23.95	24.00	1.012	0.03	0.332	0.336
02	WCDMA IV	RMC 12.2Kbps	Front	10mm	1312	1712.4	23.74	24.00	1.062	-0.08	0.330	0.350
	WCDMA IV	RMC 12.2Kbps	Front	10mm	1513	1752.6	23.93	24.00	1.016	0.01	0.293	0.298
	WCDMA IV	RMC 12.2Kbps	Right Side	10mm	1413	1732.6	23.95	24.00	1.012	0.13	0.222	0.225
	WCDMA IV	RMC 12.2Kbps	Top Side	10mm	1413	1732.6	23.95	24.00	1.012	0.11	0.001	0.001
	WCDMA V	RMC 12.2Kbps	Front	10mm	4182	836.4	23.73	24.00	1.064	0.06	0.191	0.203
	WCDMA V	RMC 12.2Kbps	Front	10mm	4132	826.4	23.65	24.00	1.084	-0.12	0.171	0.185
03	WCDMA V	RMC 12.2Kbps	Front	10mm	4233	846.6	23.72	24.00	1.067	-0.1	0.237	0.253
	WCDMA V	RMC 12.2Kbps	Right Side	10mm	4182	836.4	23.73	24.00	1.064	0.05	0.080	0.085
	WCDMA V	RMC 12.2Kbps	Top Side	10mm	4182	836.4	23.73	24.00	1.064	-0.13	0.124	0.132



<FDD LTE SAR>

Plot No.	Band	BW (MHz)	Modulation	RB Size	RB offset	Test Position	Gap (mm)	Ch.	Freq. (MHz)	Average Power (dBm)	Tune-Up Limit (dBm)	Tune-up Scaling Factor	Power Drift (dB)	Measured 1g SAR (W/kg)	Reported 1g SAR (W/kg)
	LTE Band 2	20M	QPSK	1	0	Front	10mm	19100	1900	23.52	24.00	1.117	0.01	0.212	0.237
	LTE Band 2	20M	QPSK	50	0	Front	10mm	19100	1900	22.45	23.00	1.135	-0.11	0.170	0.193
04	LTE Band 2	20M	QPSK	1	0	Right Side	10mm	19100	1900	23.52	24.00	1.117	-0.05	0.603	0.673
	LTE Band 2	20M	QPSK	1	0	Right Side	10mm	18700	1860	23.17	24.00	1.211	0.06	0.326	0.395
	LTE Band 2	20M	QPSK	1	0	Right Side	10mm	18900	1880	23.17	24.00	1.211	0.01	0.421	0.510
	LTE Band 2	20M	QPSK	50	0	Right Side	10mm	19100	1900	22.45	23.00	1.135	-0.01	0.502	0.570
	LTE Band 2	20M	QPSK	1	0	Top Side	10mm	19100	1900	23.52	24.00	1.117	0.19	0.001	0.001
	LTE Band 2	20M	QPSK	50	0	Top Side	10mm	19100	1900	22.45	23.00	1.135	0.14	0.001	0.001
	LTE Band 7	20M	QPSK	1	0	Front	10mm	21350	2560	22.30	23.00	1.175	0.01	0.184	0.216
05	LTE Band 7	20M	QPSK	1	0	Front	10mm	20850	2510	22.28	23.00	1.180	-0.08	0.280	0.330
	LTE Band 7	20M	QPSK	1	0	Front	10mm	21100	2535	22.19	23.00	1.205	-0.05	0.242	0.292
	LTE Band 7	20M	QPSK	50	0	Front	10mm	21350	2560	21.23	22.00	1.194	0.05	0.138	0.165
	LTE Band 7	20M	QPSK	1	0	Right Side	10mm	21350	2560	22.30	23.00	1.175	0.01	0.076	0.089
	LTE Band 7	20M	QPSK	50	0	Right Side	10mm	21350	2560	21.23	22.00	1.194	-0.1	0.057	0.068
	LTE Band 7	20M	QPSK	1	0	Top Side	10mm	21350	2560	22.30	23.00	1.175	-0.19	0.001	0.001
	LTE Band 7	20M	QPSK	50	0	Top Side	10mm	21350	2560	21.23	22.00	1.194	0.07	0.001	0.001
	LTE Band 7C	20M	QPSK	1	0	Front	10mm	21350	2560	22.28	23.00	1.180	-0.08	0.253	0.299
06	LTE Band 12	10M	QPSK	1	0	Front	10mm	23095	707.5	23.06	24.00	1.242	-0.03	0.197	0.245
	LTE Band 12	10M	QPSK	25	0	Front	10mm	23095	707.5	22.16	23.00	1.213	0.08	0.157	0.191
	LTE Band 12	10M	QPSK	1	0	Right Side	10mm	23095	707.5	23.06	24.00	1.242	0.11	0.001	0.001
	LTE Band 12	10M	QPSK	25	0	Right Side	10mm	23095	707.5	22.16	23.00	1.213	-0.04	0.001	0.001
	LTE Band 12	10M	QPSK	1	0	Top Side	10mm	23095	707.5	23.06	24.00	1.242	-0.18	0.126	0.156
	LTE Band 12	10M	QPSK	25	0	Top Side	10mm	23095	707.5	22.16	23.00	1.213	-0.09	0.099	0.120
07	LTE Band 13	10M	QPSK	1	0	Front	10mm	23230	782	23.15	24.00	1.216	-0.04	0.186	0.226
	LTE Band 13	10M	QPSK	25	0	Front	10mm	23230	782	22.21	23.00	1.199	0.11	0.147	0.176
	LTE Band 13	10M	QPSK	1	0	Right Side	10mm	23230	782	23.15	24.00	1.216	0.16	0.049	0.060
	LTE Band 13	10M	QPSK	25	0	Right Side	10mm	23230	782	22.21	23.00	1.199	-0.06	0.001	0.001
	LTE Band 13	10M	QPSK	1	0	Top Side	10mm	23230	782	23.15	24.00	1.216	-0.14	0.117	0.142
	LTE Band 13	10M	QPSK	25	0	Top Side	10mm	23230	782	22.21	23.00	1.199	0.08	0.094	0.113
08	LTE Band 26	15M	QPSK	1	0	Front	10mm	26865	831.5	23.10	24.00	1.230	0.04	0.169	0.208
	LTE Band 26	15M	QPSK	36	0	Front	10mm	26865	831.5	22.14	23.00	1.219	0.07	0.148	0.180
	LTE Band 26	15M	QPSK	1	0	Right Side	10mm	26865	831.5	23.10	24.00	1.230	-0.11	0.089	0.109
	LTE Band 26	15M	QPSK	36	0	Right Side	10mm	26865	831.5	22.14	23.00	1.219	0.05	0.072	0.088
	LTE Band 26	15M	QPSK	1	0	Top Side	10mm	26865	831.5	23.10	24.00	1.230	0.17	0.119	0.146
	LTE Band 26	15M	QPSK	36	0	Top Side	10mm	26865	831.5	22.14	23.00	1.219	-0.09	0.101	0.123
09	LTE Band 66	20M	QPSK	1	0	Front	10mm	132322	1745	23.66	24.00	1.081	-0.01	0.312	0.337
	LTE Band 66	20M	QPSK	1	0	Front	10mm	132072	1720	23.61	24.00	1.094	0.11	0.306	0.335
	LTE Band 66	20M	QPSK	1	0	Front	10mm	132572	1770	23.65	24.00	1.084	0.12	0.262	0.284
	LTE Band 66	20M	QPSK	50	0	Front	10mm	132322	1745	22.67	23.00	1.079	0.15	0.235	0.254
	LTE Band 66	20M	QPSK	1	0	Right Side	10mm	132322	1745	23.66	24.00	1.081	0.16	0.227	0.245
	LTE Band 66	20M	QPSK	50	0	Right Side	10mm	132322	1745	22.67	23.00	1.079	0.06	0.175	0.189
	LTE Band 66	20M	QPSK	1	0	Top Side	10mm	132322	1745	23.66	24.00	1.081	0.02	0.001	0.001
	LTE Band 66	20M	QPSK	50	0	Top Side	10mm	132322	1745	22.67	23.00	1.079	0.04	0.001	0.001



<TDD LTE SAR>

Plot No.	Band	BW (MHz)	Modulation	RB Size	RB offset	Test Position	Gap (mm)	Ch.	Freq. (MHz)	Average Power (dBm)	Tune-Up Limit (dBm)	Tune-up Scaling Factor	Duty Cycle %	Duty Cycle Scaling Factor	Power Drift (dB)	Measured 1g SAR (W/kg)	Reported 1g SAR (W/kg)
	LTE Band 41	20M	QPSK	1	0	Front	10mm	40620	2593	22.40	23.00	1.148	62.9	1.006	-0.13	0.046	0.053
10	LTE Band 41	20M	QPSK	1	0	Front	10mm	39750	2506	22.22	23.00	1.197	62.9	1.006	-0.05	0.085	0.102
	LTE Band 41	20M	QPSK	1	0	Front	10mm	40185	2549.5	22.34	23.00	1.164	62.9	1.006	-0.06	0.065	0.076
	LTE Band 41	20M	QPSK	1	0	Front	10mm	41055	2636.5	22.39	23.00	1.151	62.9	1.006	0.08	0.031	0.036
	LTE Band 41	20M	QPSK	1	0	Front	10mm	41490	2680	22.32	23.00	1.169	62.9	1.006	-0.14	0.035	0.041
	LTE Band 41	20M	QPSK	50	0	Front	10mm	40620	2593	21.33	22.00	1.167	62.9	1.006	-0.05	0.032	0.038
	LTE Band 41	20M	QPSK	1	0	Right Side	10mm	40620	2593	22.40	23.00	1.148	62.9	1.006	0.11	0.032	0.037
	LTE Band 41	20M	QPSK	50	0	Right Side	10mm	40620	2593	21.33	22.00	1.167	62.9	1.006	0.15	0.026	0.031
	LTE Band 41	20M	QPSK	1	0	Top Side	10mm	40620	2593	22.40	23.00	1.148	62.9	1.006	0.01	0.001	0.001
	LTE Band 41	20M	QPSK	50	0	Top Side	10mm	40620	2593	21.33	22.00	1.167	62.9	1.006	0.01	0.001	0.001
	LTE Band 41C	20M	QPSK	1	0	Front	10mm	40620	2593	22.29	23.00	1.178	62.9	1.006	-0.05	0.071	0.084



**12.2 Extremity SAR**

**<WCDMA SAR>**

Plot No.	Band	Mode	Test Position	Gap (mm)	Ch.	Freq. (MHz)	Average Power (dBm)	Tune-Up Limit (dBm)	Tune-up Scaling Factor	Power Drift (dB)	Measured 10g SAR (W/kg)	Reported 10g SAR (W/kg)
11	WCDMA II	RMC 12.2Kbps	Back	0mm	9538	1907.6	23.98	24.00	1.005	0.01	0.565	0.568
	WCDMA II	RMC 12.2Kbps	Back	0mm	9262	1852.4	23.92	24.00	1.019	0.05	0.359	0.366
	WCDMA II	RMC 12.2Kbps	Back	0mm	9400	1880	23.90	24.00	1.023	-0.09	0.433	0.443
	WCDMA IV	RMC 12.2Kbps	Back	0mm	1413	1732.6	23.95	24.00	1.012	0.09	0.366	0.370
12	WCDMA IV	RMC 12.2Kbps	Back	0mm	1312	1712.4	23.74	24.00	1.062	-0.16	0.385	0.409
	WCDMA IV	RMC 12.2Kbps	Back	0mm	1513	1752.6	23.93	24.00	1.016	0.12	0.328	0.333
	WCDMA V	RMC 12.2Kbps	Back	0mm	4182	836.4	23.73	24.00	1.064	0.05	0.142	0.152
	WCDMA V	RMC 12.2Kbps	Back	0mm	4132	826.4	23.65	24.00	1.084	-0.1	0.132	0.143
13	WCDMA V	RMC 12.2Kbps	Back	0mm	4233	846.6	23.72	24.00	1.067	-0.13	0.159	0.170

**<FDD LTE SAR>**

Plot No.	Band	BW (MHz)	Modulation	RB Size	RB offset	Test Position	Gap (mm)	Ch.	Freq. (MHz)	Average Power (dBm)	Tune-Up Limit (dBm)	Tune-up Scaling Factor	Power Drift (dB)	Measured 10g SAR (W/kg)	Reported 10g SAR (W/kg)
14	LTE Band 2	20M	QPSK	1	0	Back	0mm	19100	1900	23.52	24.00	1.117	-0.11	0.432	0.482
	LTE Band 2	20M	QPSK	1	0	Back	0mm	18700	1860	23.17	24.00	1.211	0.01	0.302	0.366
	LTE Band 2	20M	QPSK	1	0	Back	0mm	18900	1880	23.17	24.00	1.211	-0.16	0.344	0.416
	LTE Band 2	20M	QPSK	50	0	Back	0mm	19100	1900	22.45	23.00	1.135	0.09	0.355	0.403
	LTE Band 7	20M	QPSK	1	0	Back	0mm	21350	2560	22.30	23.00	1.175	0.01	0.138	0.162
15	LTE Band 7	20M	QPSK	1	0	Back	0mm	20850	2510	22.28	23.00	1.180	0.02	0.150	0.177
	LTE Band 7	20M	QPSK	1	0	Back	0mm	21100	2535	22.19	23.00	1.205	-0.15	0.143	0.172
	LTE Band 7	20M	QPSK	50	0	Back	0mm	21350	2560	21.23	22.00	1.194	0.09	0.104	0.124
	LTE Band 7C	20M	QPSK	1	0	Back	0mm	21350	2560	22.28	23.00	1.180	0.02	0.136	0.161
16	LTE Band 12	10M	QPSK	1	0	Back	0mm	23095	707.5	23.06	24.00	1.242	-0.06	0.183	0.227
	LTE Band 12	10M	QPSK	25	0	Back	0mm	23095	707.5	22.16	23.00	1.213	0.03	0.143	0.174
17	LTE Band 13	10M	QPSK	1	0	Back	0mm	23230	782	23.15	24.00	1.216	-0.05	0.157	0.191
	LTE Band 13	10M	QPSK	25	0	Back	0mm	23230	782	22.21	23.00	1.199	0.11	0.125	0.150
18	LTE Band 26	15M	QPSK	1	0	Back	0mm	26865	831.5	23.10	24.00	1.230	-0.09	0.135	0.166
	LTE Band 26	15M	QPSK	36	0	Back	0mm	26865	831.5	22.14	23.00	1.219	0.11	0.106	0.129
	LTE Band 66	20M	QPSK	1	0	Back	0mm	132322	1745	23.66	24.00	1.081	0.11	0.374	0.404
19	LTE Band 66	20M	QPSK	1	0	Back	0mm	132072	1720	23.61	24.00	1.094	0.15	0.375	0.410
	LTE Band 66	20M	QPSK	1	0	Back	0mm	132572	1770	23.65	24.00	1.084	-0.08	0.351	0.380
	LTE Band 66	20M	QPSK	50	0	Back	0mm	132322	1745	22.67	23.00	1.079	0.16	0.291	0.314



**<TDD LTE SAR>**

Plot No.	Band	BW (MHz)	Modulation	RB Size	RB offset	Test Position	Gap (mm)	Ch.	Freq. (MHz)	Average Power (dBm)	Tune-Up Limit (dBm)	Tune-up Scaling Factor	Duty Cycle %	Duty Cycle Scaling Factor	Power Drift (dB)	Measured 10g SAR (W/kg)	Reported 10g SAR (W/kg)
	LTE Band 41	20M	QPSK	1	0	Back	0mm	40620	2593	22.40	23.00	1.148	62.9	1.006	0.14	0.087	0.100
	LTE Band 41	20M	QPSK	1	0	Back	0mm	39750	2506	22.22	23.00	1.197	62.9	1.006	-0.01	0.103	0.124
	LTE Band 41	20M	QPSK	1	0	Back	0mm	40185	2549.5	22.34	23.00	1.164	62.9	1.006	0.05	0.101	0.118
	LTE Band 41	20M	QPSK	1	0	Back	0mm	41055	2636.5	22.39	23.00	1.151	62.9	1.006	0.08	0.118	0.137
20	LTE Band 41	20M	QPSK	1	0	Back	0mm	41490	2680	22.32	23.00	1.169	62.9	1.006	-0.12	0.195	0.229
	LTE Band 41	20M	QPSK	50	0	Back	0mm	40620	2593	21.33	22.00	1.167	62.9	1.006	-0.11	0.068	0.080
	LTE Band 41C	20M	QPSK	1	0	Back	0mm	40620	2593	22.29	23.00	1.178	62.9	1.006	0.14	0.066	0.078

**13. Simultaneous Transmission Analysis**

NO.	Simultaneous Transmission Configurations	Support
1.	WWAN + WLAN2.4GHz Ant 1+2	Yes
2.	WWAN + WLAN2.4GHz Ant2 + Bluetooth Ant1	Yes
3.	WWAN + WLAN2.4GHz Ant1 + WLAN5GHz Ant2	Yes
4.	WWAN + WLAN5GHz Ant2 + Bluetooth Ant1	Yes
5.	WWAN + WLAN5GHz Ant 1+2	Yes

**General Note:**

- For SAR testing was performed on single antenna RF power in SISO mode is larger or equal to the single antenna RF power in MIMO mode, and for RF exposure assessment of MIMO mode simultaneous transmission exclusion analysis was performed with SAR test results of each antenna in SISO mode.
- EUT will choose either WLAN 2.4GHz or WLAN 5GHz according to the network signal condition; therefore, 2.4GHz WLAN and 5GHz WLAN will not operate simultaneously at any moment.
- The Scaled SAR summation is calculated based on the same configuration and test position.
- Per KDB 447498 D01v06, simultaneous transmission SAR is compliant if,
  - Scalar SAR summation < 1.6W/kg.
  - $SPLSR = (SAR1 + SAR2)^{1.5} / (\text{min. separation distance, mm})$ , and the peak separation distance is determined from the square root of  $[(x1-x2)^2 + (y1-y2)^2 + (z1-z2)^2]$ , where (x1, y1, z1) and (x2, y2, z2) are the coordinates of the extrapolated peak SAR locations in the zoom scan.
  - If  $SPLSR \leq 0.04$ , simultaneously transmission SAR measurement is not necessary.
  - Simultaneously transmission SAR measurement, and the reported multi-band SAR < 1.6W/kg.

**13.1 Body Exposure Conditions**

WWAN Band	Exposure Position	0	1	2	3	4	5	0+1+2 Summed 1g SAR (W/kg)	0+2+5 Summed 1g SAR (W/kg)	0+1+4 Summed 1g SAR (W/kg)	0+4+5 Summed 1g SAR (W/kg)	0+3+4 Summed 1g SAR (W/kg)
		WWAN	2.4GHz WLAN Ant 1	2.4GHz WLAN Ant 2	5GHz WLAN Ant 1	5GHz WLAN Ant 2	Bluetooth Ant 1					
		1g SAR (W/kg)	1g SAR (W/kg)	1g SAR (W/kg)	1g SAR (W/kg)	1g SAR (W/kg)	1g SAR (W/kg)					
WCDMA II	Front	0.260	0.139	0.001	0.130	0.077	0.043	0.400	0.304	0.476	0.380	0.467
	Right side	0.789	0.064	0.001	0.075	0.001	0.015	0.854	0.805	0.854	0.805	0.865
	Top side	0.001	0.084	0.055	0.439	0.062	0.023	0.140	0.079	0.147	0.086	0.502
WCDMA IV	Front	0.350	0.139	0.001	0.130	0.077	0.043	0.490	0.394	0.566	0.470	0.557
	Right side	0.225	0.064	0.001	0.075	0.001	0.015	0.290	0.241	0.290	0.241	0.301
	Top side	0.001	0.084	0.055	0.439	0.062	0.023	0.140	0.079	0.147	0.086	0.502
WCDMA V	Front	0.253	0.139	0.001	0.130	0.077	0.043	0.393	0.297	0.469	0.373	0.460
	Right side	0.085	0.064	0.001	0.075	0.001	0.015	0.150	0.101	0.150	0.101	0.161
	Top side	0.132	0.084	0.055	0.439	0.062	0.023	0.271	0.210	0.278	0.217	0.633
LTE Band 2	Front	0.237	0.139	0.001	0.130	0.077	0.043	0.377	0.281	0.453	0.357	0.444
	Right side	0.673	0.064	0.001	0.075	0.001	0.015	0.738	0.689	0.738	0.689	0.749
	Top side	0.001	0.084	0.055	0.439	0.062	0.023	0.140	0.079	0.147	0.086	0.502
LTE Band 7	Front	0.330	0.139	0.001	0.130	0.077	0.043	0.470	0.374	0.546	0.450	0.537
	Right side	0.089	0.064	0.001	0.075	0.001	0.015	0.154	0.105	0.154	0.105	0.165
	Top side	0.001	0.084	0.055	0.439	0.062	0.023	0.140	0.079	0.147	0.086	0.502
LTE Band 12	Front	0.245	0.139	0.001	0.130	0.077	0.043	0.385	0.289	0.461	0.365	0.452
	Right side	0.001	0.064	0.001	0.075	0.001	0.015	0.066	0.017	0.066	0.017	0.077
	Top side	0.156	0.084	0.055	0.439	0.062	0.023	0.295	0.234	0.302	0.241	0.657
LTE Band 13	Front	0.226	0.139	0.001	0.130	0.077	0.043	0.366	0.270	0.442	0.346	0.433
	Right side	0.060	0.064	0.001	0.075	0.001	0.015	0.125	0.076	0.125	0.076	0.136
	Top side	0.142	0.084	0.055	0.439	0.062	0.023	0.281	0.220	0.288	0.227	0.643
LTE Band 26	Front	0.208	0.139	0.001	0.130	0.077	0.043	0.348	0.252	0.424	0.328	0.415
	Right side	0.109	0.064	0.001	0.075	0.001	0.015	0.174	0.125	0.174	0.125	0.185
	Top side	0.146	0.084	0.055	0.439	0.062	0.023	0.285	0.224	0.292	0.231	0.647
LTE Band 41	Front	0.102	0.139	0.001	0.130	0.077	0.043	0.242	0.146	0.318	0.222	0.309
	Right side	0.037	0.064	0.001	0.075	0.001	0.015	0.102	0.053	0.102	0.053	0.113
	Top side	0.001	0.084	0.055	0.439	0.062	0.023	0.140	0.079	0.147	0.086	0.502
LTE Band 66	Front	0.337	0.139	0.001	0.130	0.077	0.043	0.477	0.381	0.553	0.457	0.544
	Right side	0.245	0.064	0.001	0.075	0.001	0.015	0.310	0.261	0.310	0.261	0.321
	Top side	0.001	0.084	0.055	0.439	0.062	0.023	0.140	0.079	0.147	0.086	0.502

**13.2 Extremity Exposure Conditions**

WWAN Band	Exposure Position	0	1	2	3	4	5	0+1+2 Summed 10g SAR (W/kg)	0+2+5 Summed 10g SAR (W/kg)	0+1+4 Summed 10g SAR (W/kg)	0+4+5 Summed 10g SAR (W/kg)	0+3+4 Summed 10g SAR (W/kg)
		WWAN	2.4GHz WLAN Ant 1	2.4GHz WLAN Ant 2	5GHz WLAN Ant 1	5GHz WLAN Ant 2	Bluetooth Ant 1					
		10g SAR (W/kg)	10g SAR (W/kg)	10g SAR (W/kg)	10g SAR (W/kg)	10g SAR (W/kg)	10g SAR (W/kg)					
WCDMA II	Back	0.568	0.108	0.057	0.301	0.072	0.033	0.733	0.658	0.748	0.673	0.941
WCDMA IV	Back	0.409	0.108	0.057	0.301	0.072	0.033	0.574	0.499	0.589	0.514	0.782
WCDMA V	Back	0.170	0.108	0.057	0.301	0.072	0.033	0.335	0.260	0.350	0.275	0.543
LTE Band 2	Back	0.482	0.108	0.057	0.301	0.072	0.033	0.647	0.572	0.662	0.587	0.855
LTE Band 7	Back	0.177	0.108	0.057	0.301	0.072	0.033	0.342	0.267	0.357	0.282	0.550
LTE Band 12	Back	0.227	0.108	0.057	0.301	0.072	0.033	0.392	0.317	0.407	0.332	0.600
LTE Band 13	Back	0.191	0.108	0.057	0.301	0.072	0.033	0.356	0.281	0.371	0.296	0.564
LTE Band 26	Back	0.166	0.108	0.057	0.301	0.072	0.033	0.331	0.256	0.346	0.271	0.539
LTE Band 41	Back	0.229	0.108	0.057	0.301	0.072	0.033	0.394	0.319	0.409	0.334	0.602
LTE Band 66	Back	0.410	0.108	0.057	0.301	0.072	0.033	0.575	0.500	0.590	0.515	0.783

Test Engineer : Willie Huang, Jeff Tsao and Jordar Jhuang



## **14. Uncertainty Assessment**

Per KDB 865664 D01 SAR measurement 100MHz to 6GHz, when the highest measured 1-g SAR within a frequency band is < 1.5 W/kg and the measured 10-g SAR within a frequency band is < 3.75 W/kg. The expanded SAR measurement uncertainty must be  $\leq 30\%$ , for a confidence interval of  $k = 2$ . If these conditions are met, extensive SAR measurement uncertainty analysis described in IEEE Std 1528-2013 is not required in SAR reports submitted for equipment approval. For this device, the highest measured 1-g SAR is less 1.5W/kg and highest measured 10-g SAR is less 3.75W/kg. Therefore, the measurement uncertainty table is not required in this report.

Declaration of Conformity:

The test results with all measurement uncertainty excluded is presented in accordance with the regulation limits or requirements declared by manufacturers.

Comments and Explanations:

The declared of product specification for EUT presented in the report are provided by the manufacturer, and the manufacturer takes all the responsibilities for the accuracy of product specification.

## **15. References**

- [1] FCC 47 CFR Part 2 "Frequency Allocations and Radio Treaty Matters; General Rules and Regulations"
- [2] ANSI/IEEE Std. C95.1-1992, "IEEE Standard for Safety Levels with Respect to Human Exposure to Radio Frequency Electromagnetic Fields, 3 kHz to 300 GHz", September 1992
- [3] IEEE Std. 1528-2013, "IEEE Recommended Practice for Determining the Peak Spatial-Average Specific Absorption Rate (SAR) in the Human Head from Wireless Communications Devices: Measurement Techniques", Sep 2013
- [4] SPEAG DASY System Handbook
- [5] FCC KDB 248227 D01 v02r02, "SAR Guidance for IEEE 802.11 (WiFi) Transmitters", Oct 2015.
- [6] FCC KDB 447498 D01 v06, "Mobile and Portable Device RF Exposure Procedures and Equipment Authorization Policies", Oct 2015
- [7] FCC KDB 941225 D01 v03r01, "3G SAR MEAUREMENT PROCEDURES", Oct 2015
- [8] FCC KDB 941225 D05 v02r05, "SAR Evaluation Considerations for LTE Devices", Dec 2015
- [9] FCC KDB 941225 D05A v01r02, "Rel. 10 LTE SAR Test Guidance and KDB Inquiries", Oct 2015
- [10] FCC KDB 865664 D01 v01r04, "SAR Measurement Requirements for 100 MHz to 6 GHz", Aug 2015.
- [11] FCC KDB 865664 D02 v01r02, "RF Exposure Compliance Reporting and Documentation Considerations" Oct 2015.