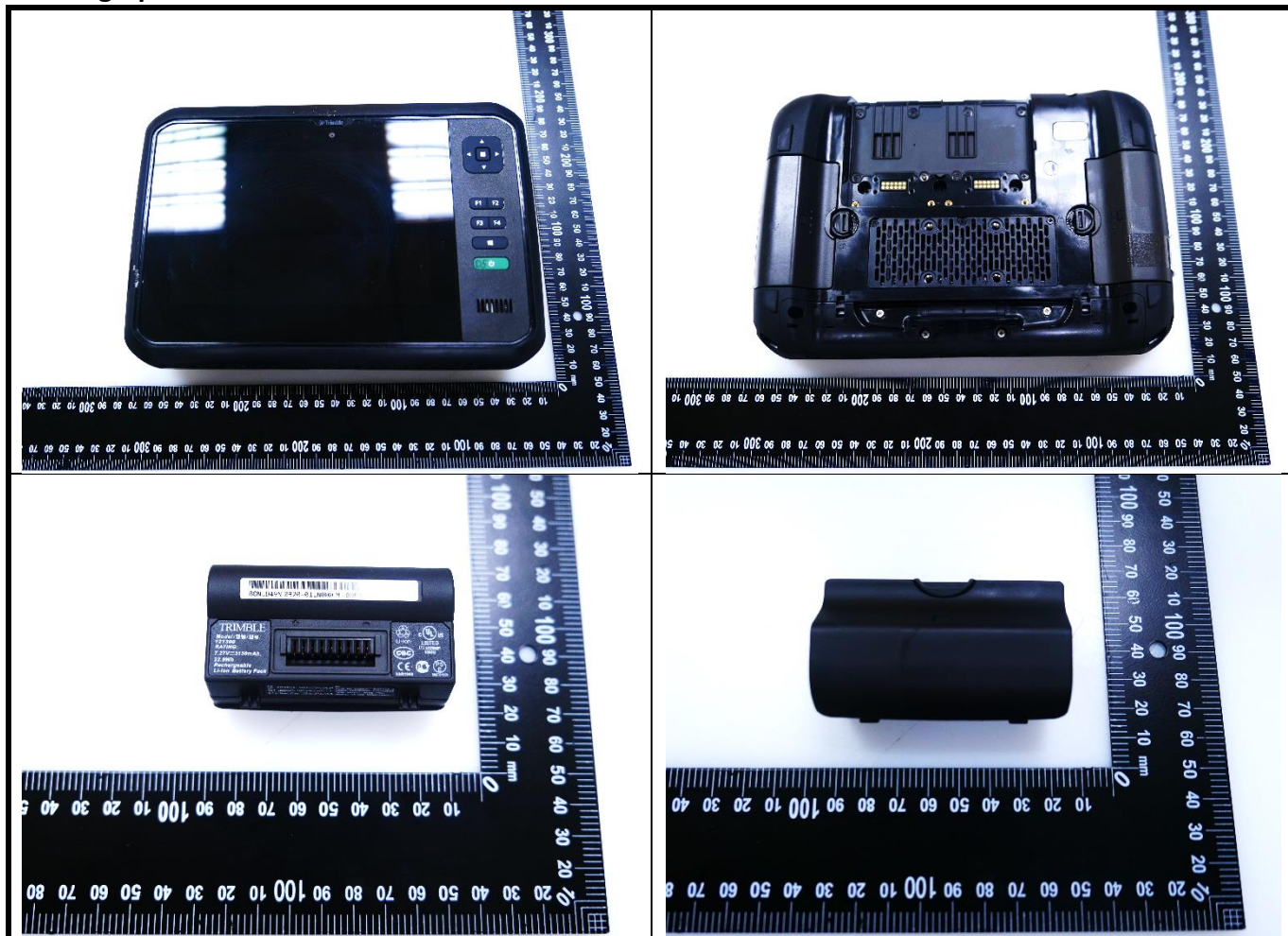


## Appendix D. Photographs of EUT and Setup

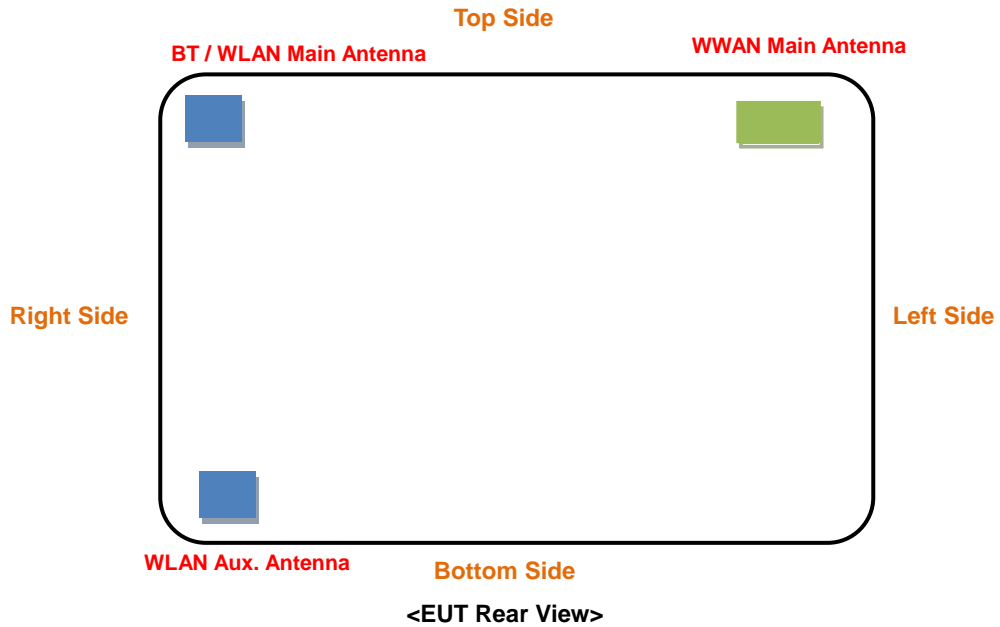
# FCC SAR Test Report

## <Photographs of EUT>



# FCC SAR Test Report

## <Antenna Location>



The separation distance for antenna to edge:

Antenna	To Top Side (mm)	To Bottom Side (mm)	To Left Side (mm)	To Right Side (mm)
WWAN	6	136.51	12	155.2
WLAN Main / BT	6	142.5	217.6	11.8
WLAN Aux.	152.5	10.9	219.5	21.9

**<Photographs of SAR Setup>**

	
<p><b>Extremity - Left Side of EUT at 0 mm</b></p>	<p><b>Extremity - Right Side of EUT at 0 mm</b></p>
	
<p><b>Extremity - Top Side of EUT at 0 mm</b></p>	<p><b>Extremity - Bottom Side of EUT at 0 mm</b></p>
	
<p><b>Extremity - Rear Face of EUT at 0 mm</b></p>	