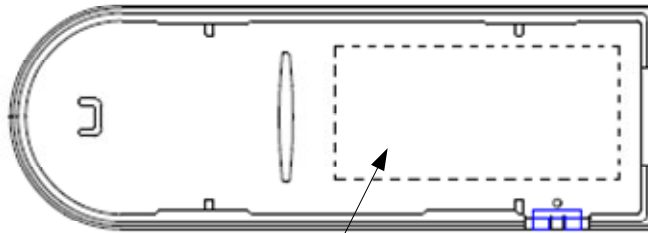
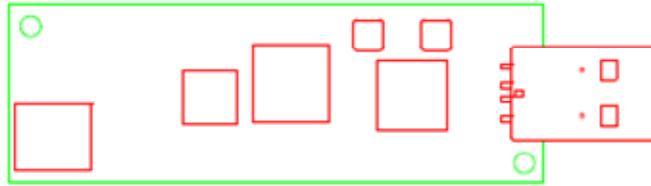
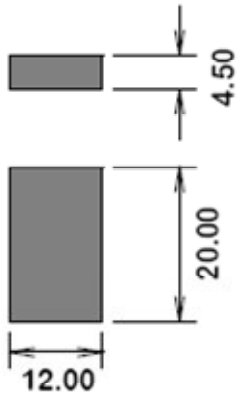
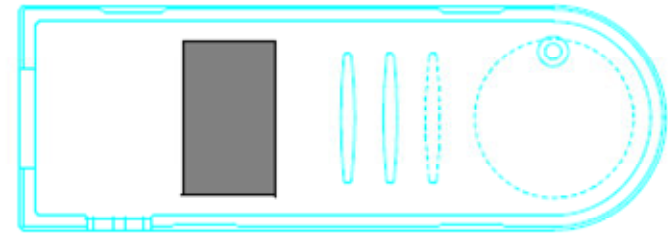


**FOAM PAD DETAIL  
FARNELL PNo. 53-6805**



**Label placement  
(outside)**

27.00



**TOP HOUSING**



**FOAM BLOCK**



**PCB ASSEMBLY**



**LED LIGHT GUIDE**



**LOWER HOUSING**



## Assembly Notes

PLACE THE PCB ASSEMBLY INTO THE LOWER HOUSING ENSURING THE USB CONNECTOR IS A LOOSE FIT.

STICK THE PIECE OF 4.5mm FOAM AS SHOWN INSIDE THE TOP HOUSING.

CAREFULLY FIT THE TOP HOUSING AND CLICK INTO PLACE.

CHECK THAT THE PCB IS A FIRM FIT AND DOESN'T RATTLE IN THE HOUSING.