

Headquarters

Shinjuku Monolith, 3-1 Nishi-Shinjuku 2-chome, Shinjuku-ku,
Tokyo 163-0914, Japan

Technology Research Institutes

2951 Ishikawa-cho, Hachioji-shi, Tokyo 192-8507, Japan
2-3 Kuboyama-cho, Hachioji-shi, Tokyo 192-8512, Japan

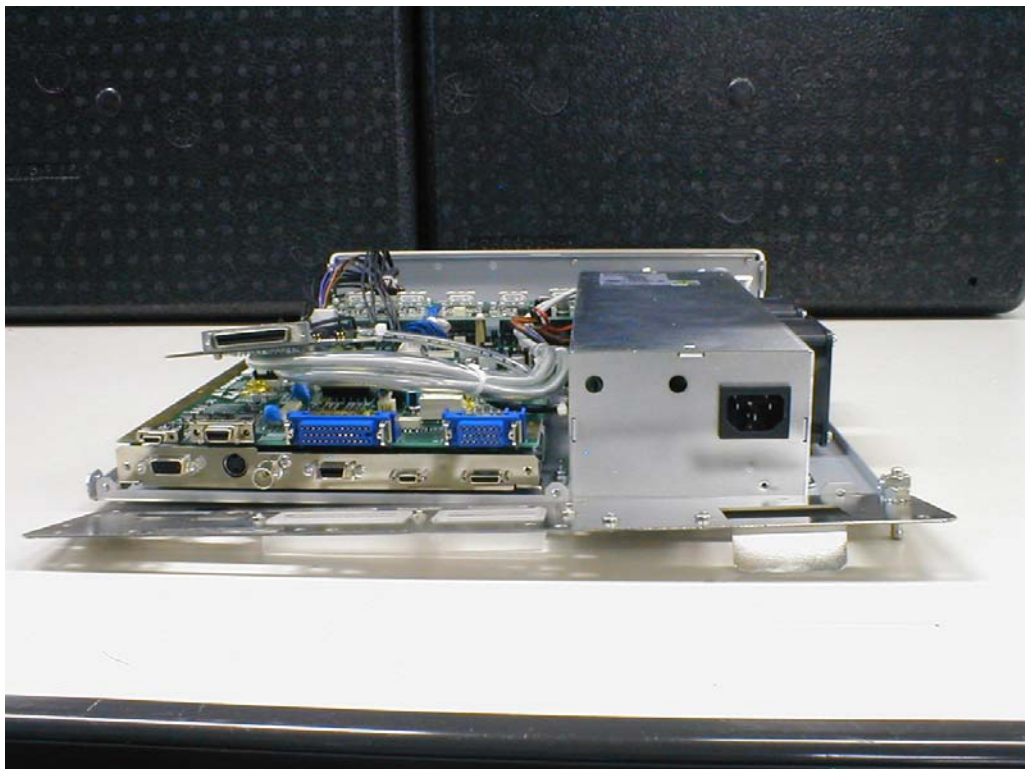
Internal Photos

Front of the main unit

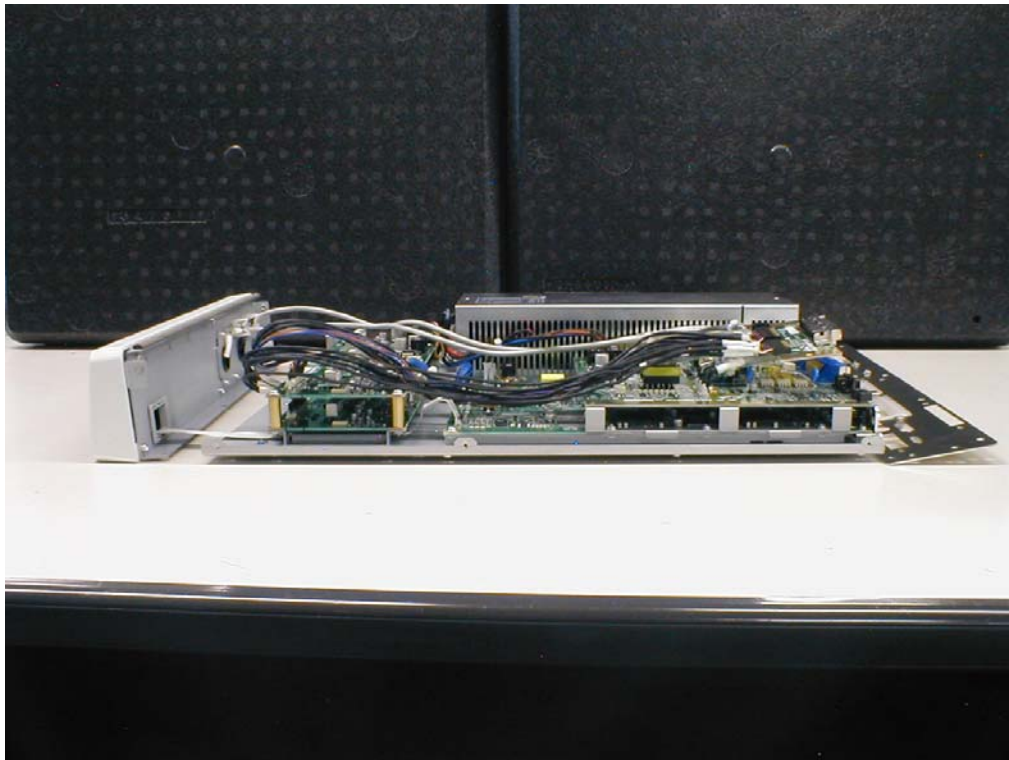
Confidential



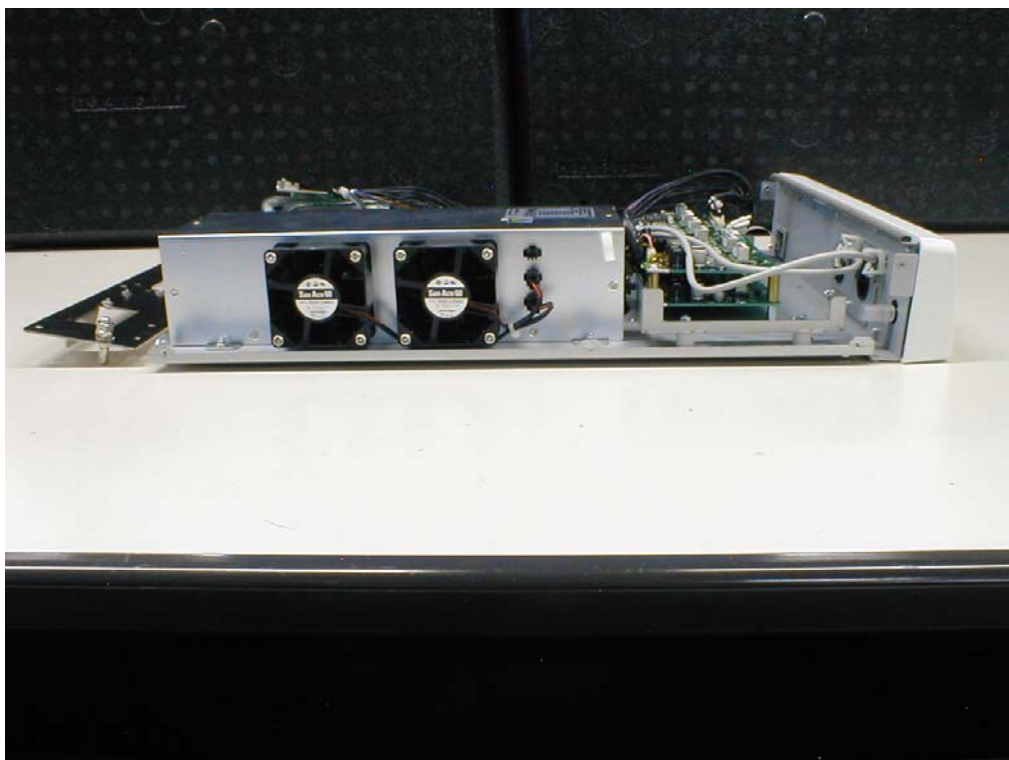
Rear of the main unit



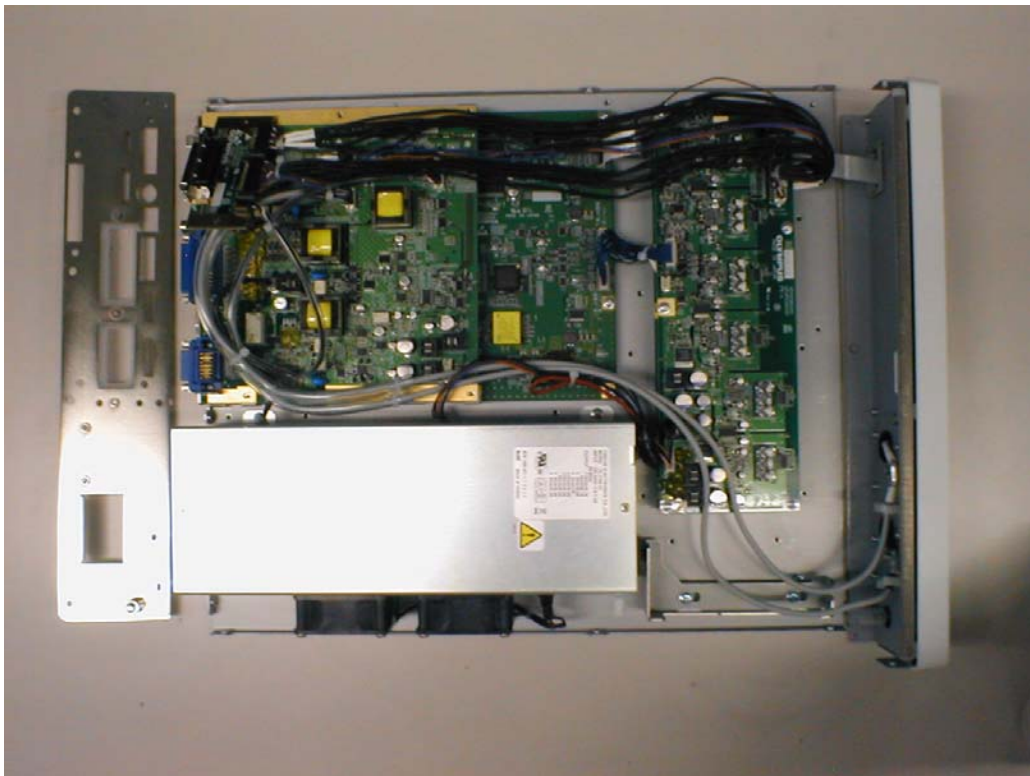
Right side of the main unit



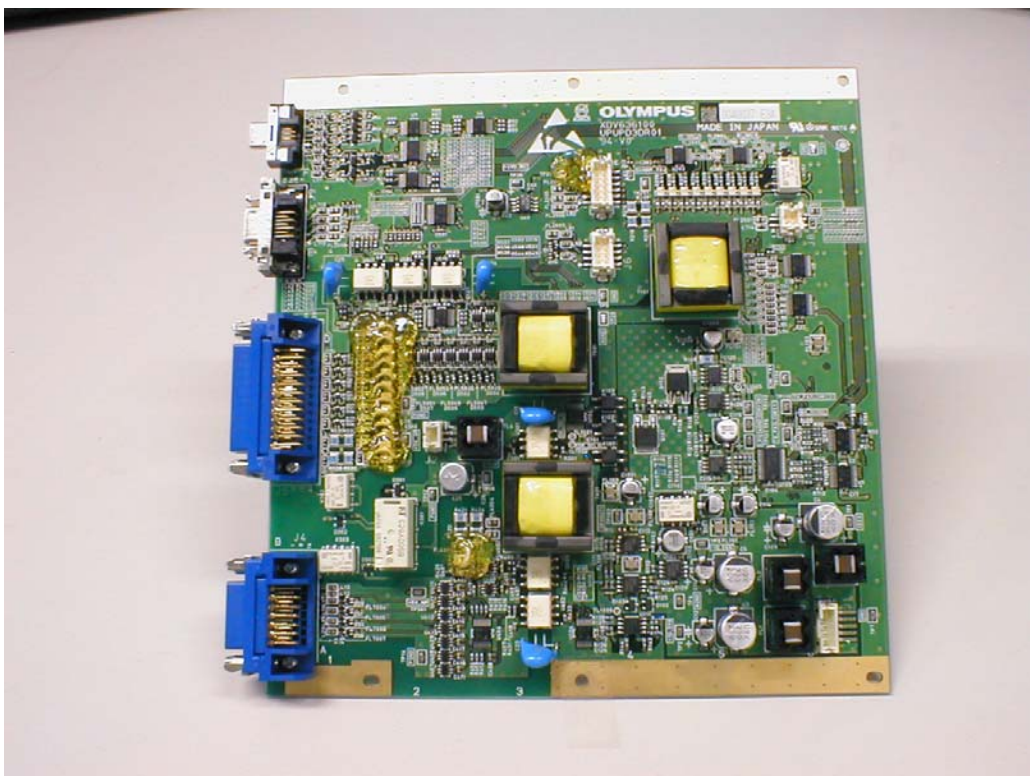
Left side of the main unit



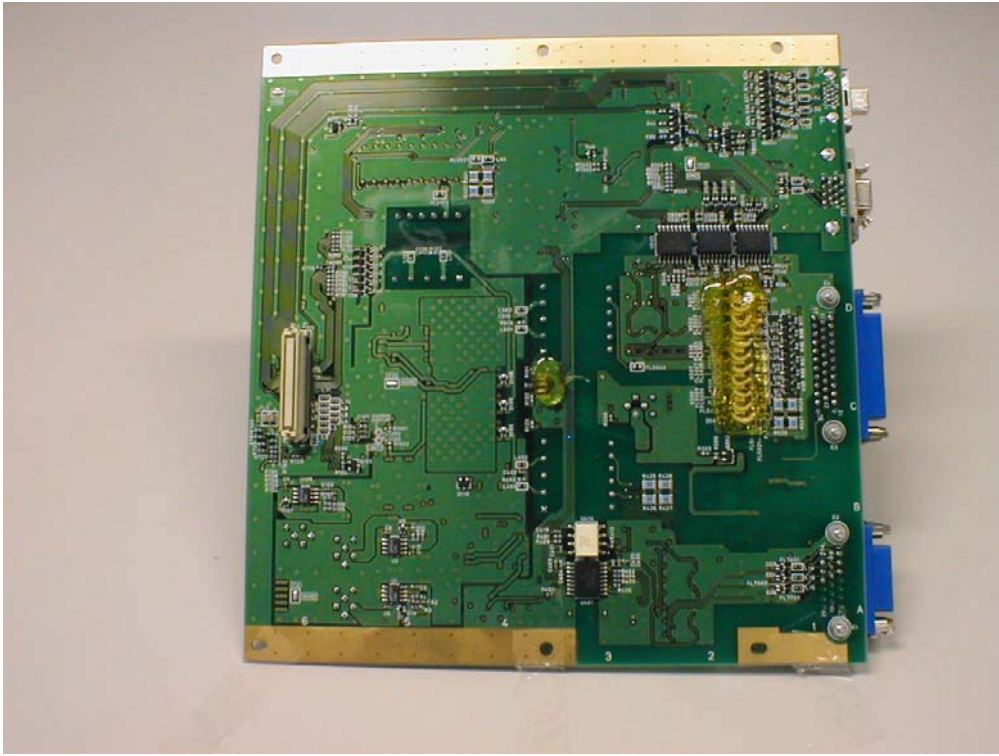
Top of the main unit



Module : TX circuit Top



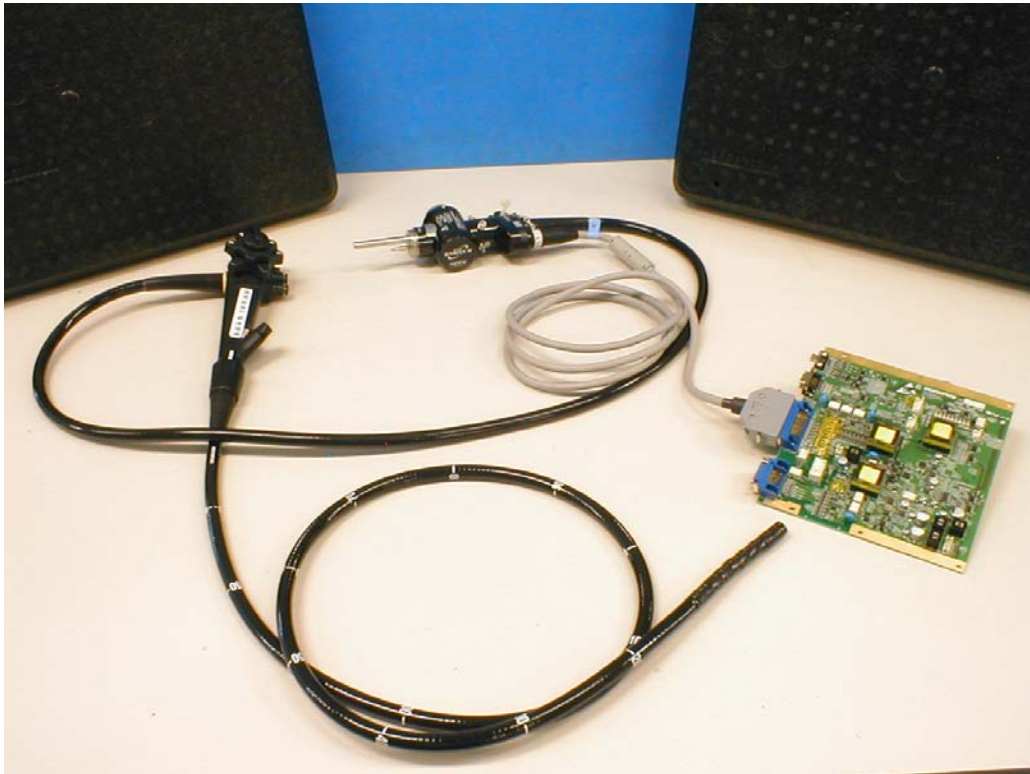
TX circuit Bottom



Antenna unit (Hand cool & Reference plate) & Tx unit



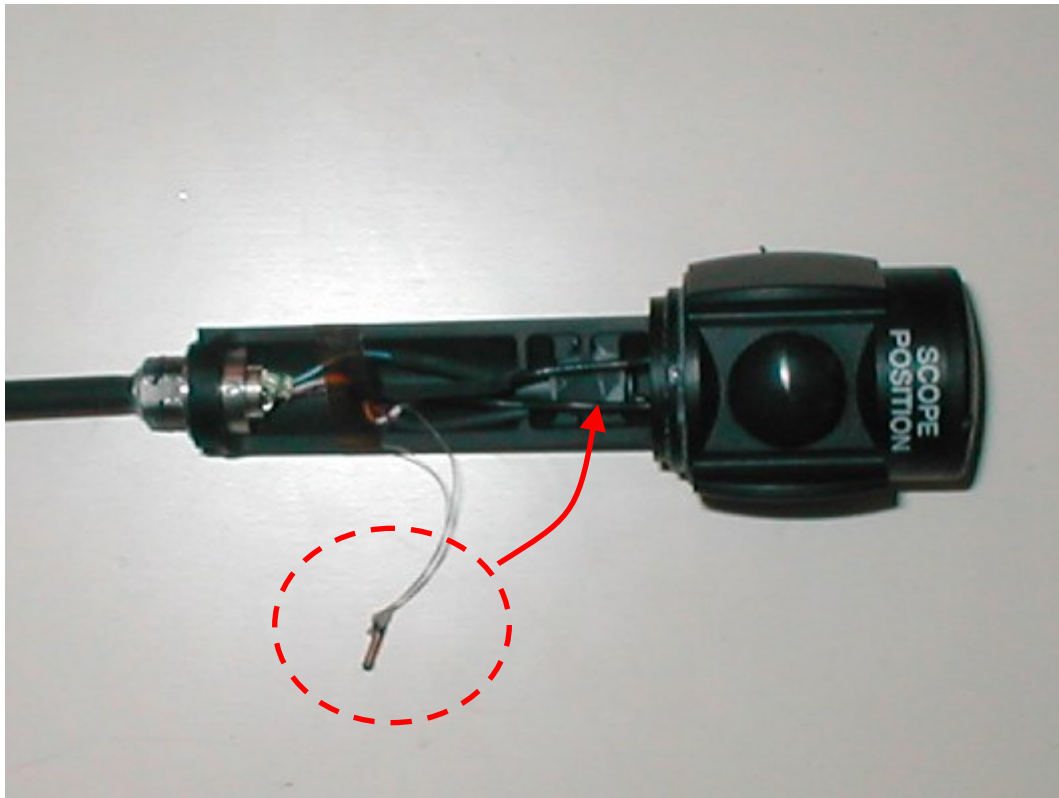
Antenna unit (Video endoscope) & Tx unit



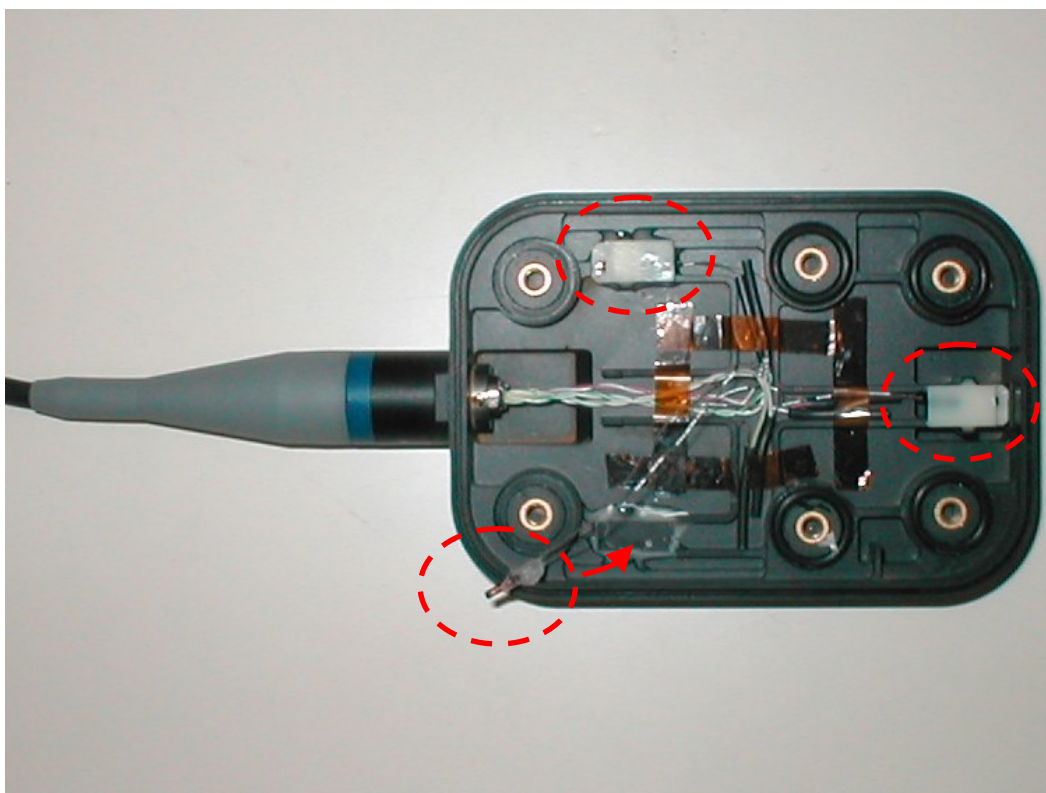
The part of antenna (coil)



Antenna unit (Hand coil)

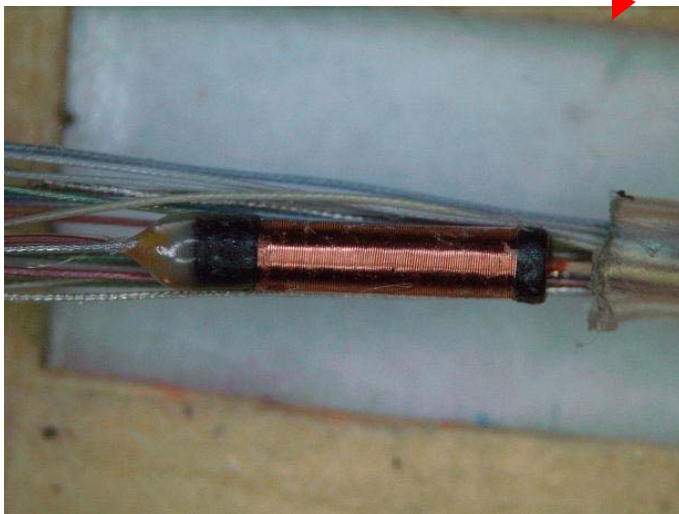
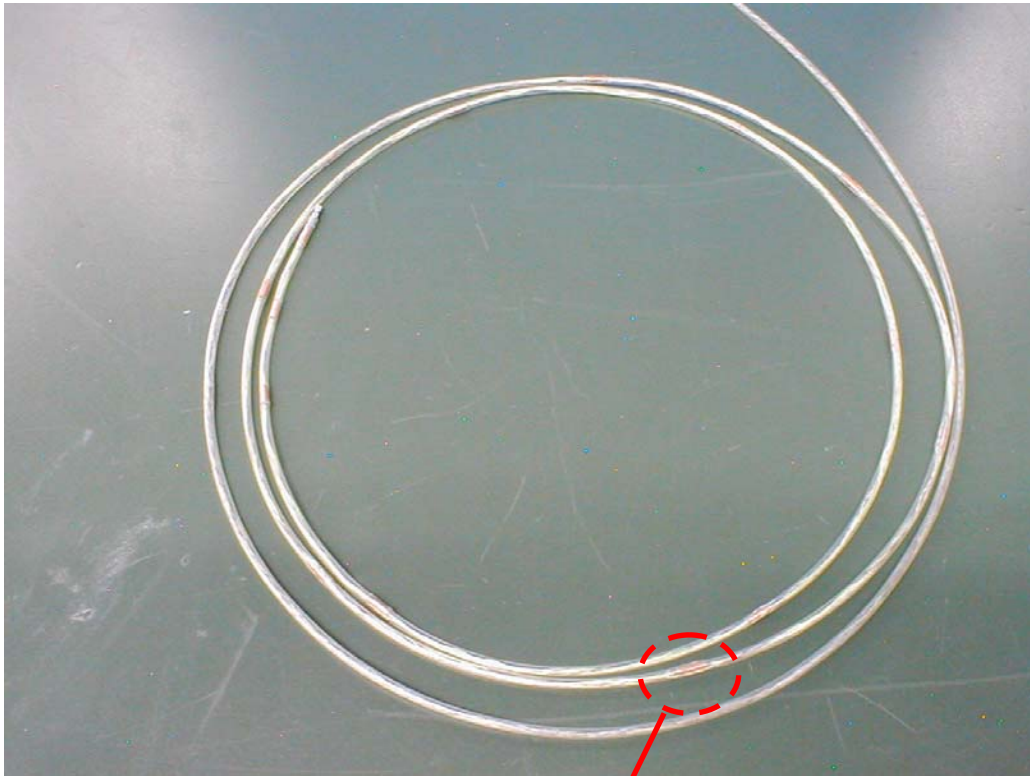


Antenna unit (Reference plate)

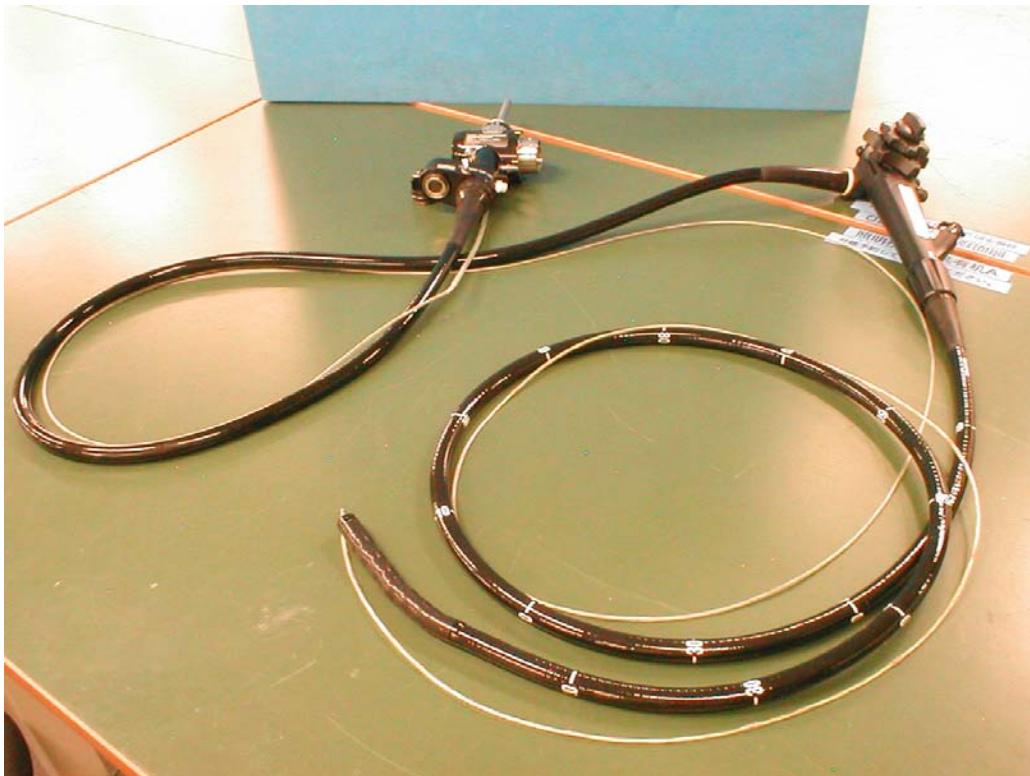


Antenna unit(coil probe in the video endoscope)

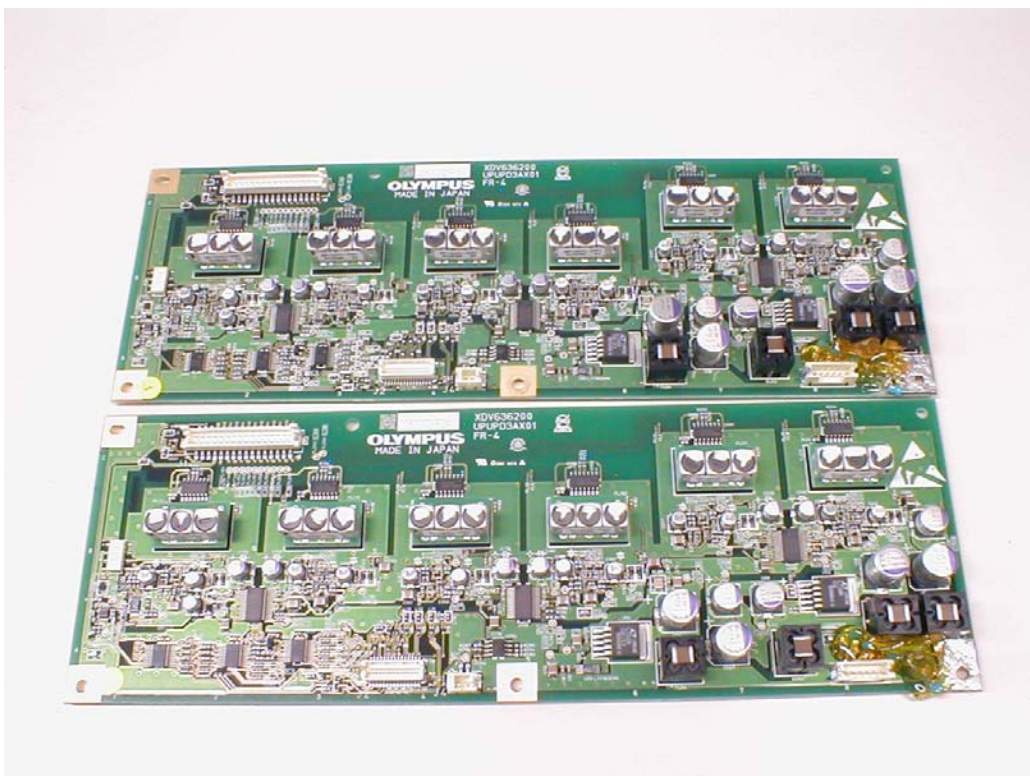
*There are 19 coils in the probe



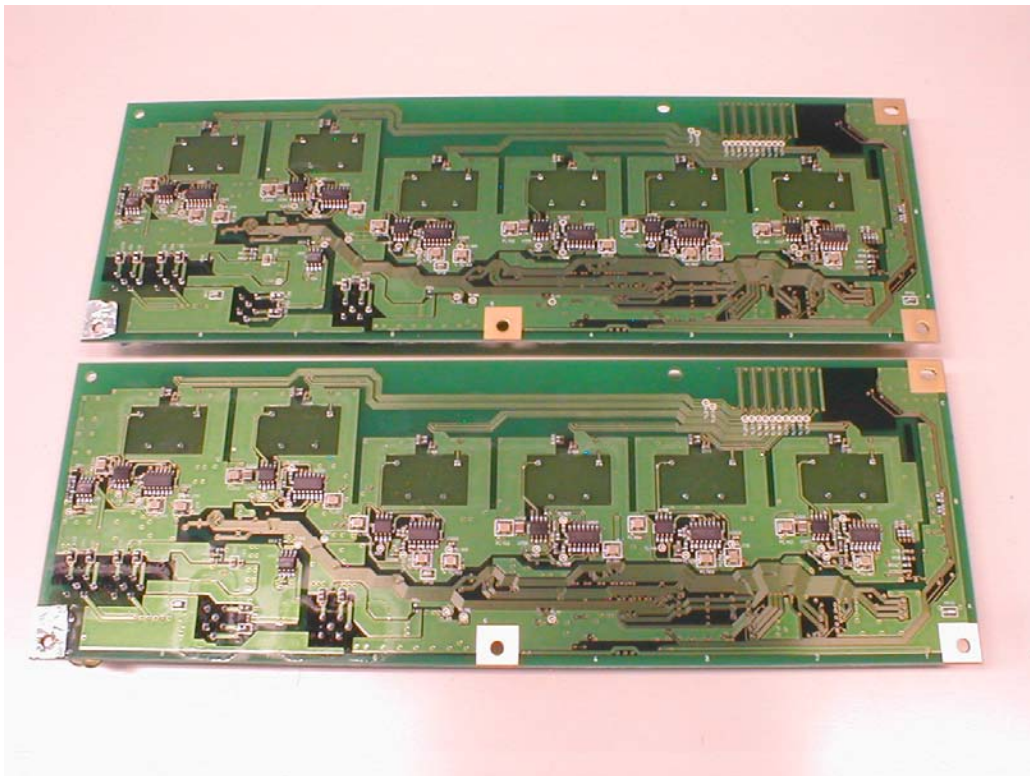
The video endoscope contains the antenna unit(coil probe unit)



Module : Receiving circuit top



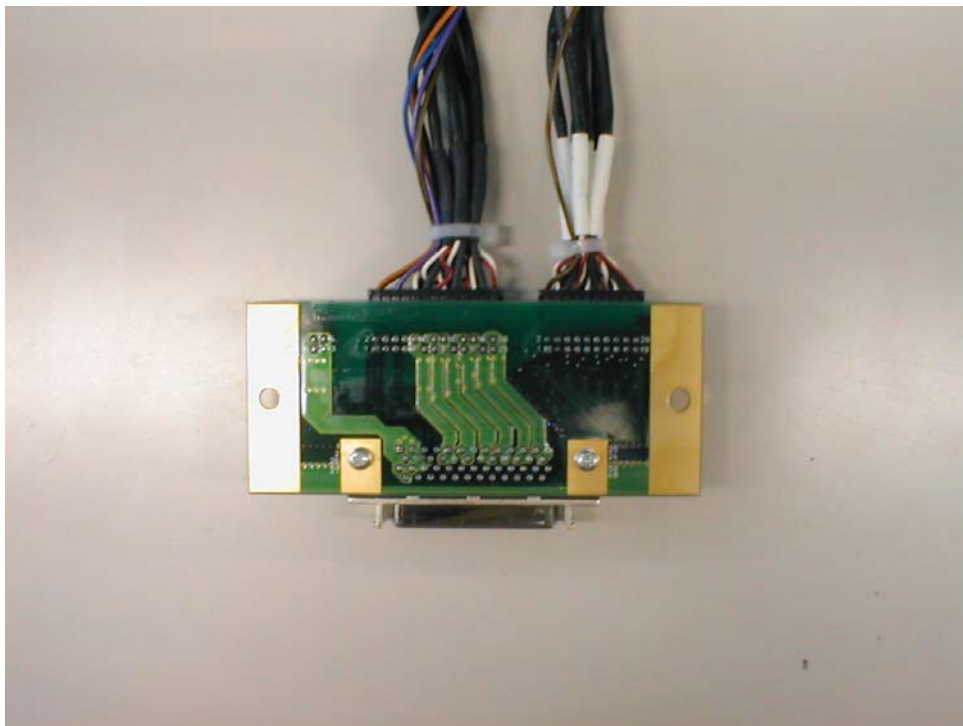
Receiving circuit bottom



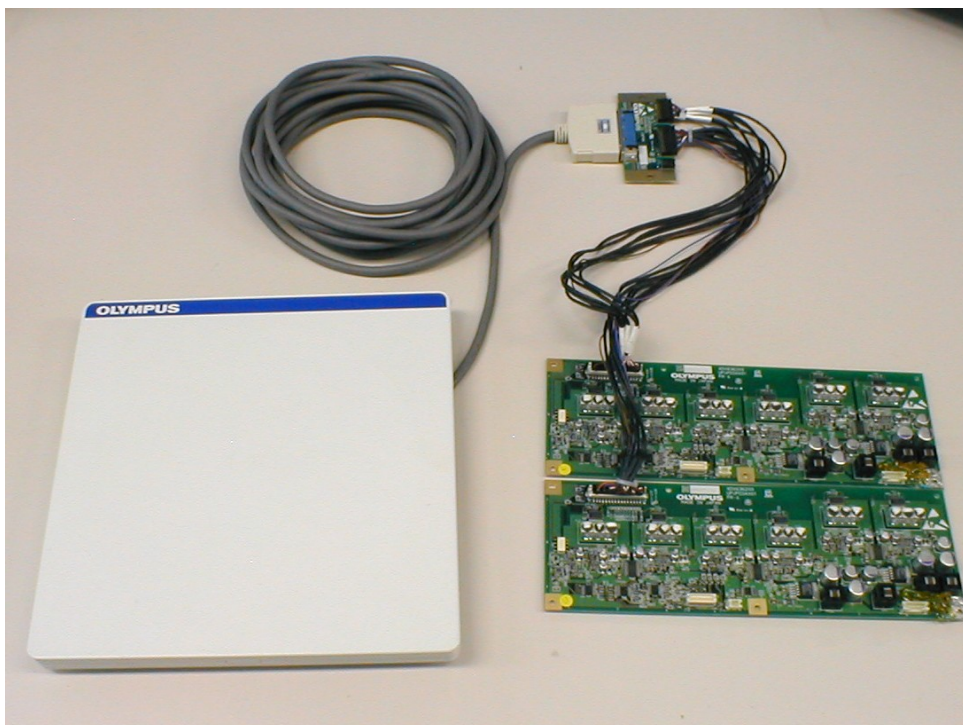
I/F unit Top



I/F unit Bottom



Receiver dish & receiving unit



Inside of the receiver dish

