

Quick Installation Guide

Wireless LAN Card

Model: BL-WN151 BL-WN155A

FCC Statement
 This device complies with part 15 of the FCC Rules. Operation is subject to the following two conditions: (1) This device may not cause harmful interference, and (2) this device must accept any interference received, including interference that may cause undesired operation.
 Any Changes or modifications not expressly approved by the party responsible for compliance could void the user's authority to operate the equipment.

Note: This equipment has been tested and found to comply with the limits for a Class B digital device, pursuant to part 15 of the FCC Rules. These limits are designed to provide reasonable protection against harmful interference in a residential installation. This equipment generates uses and can radiate radio frequency energy and, if not installed and used in accordance with the instructions, may cause harmful interference to radio communications. However, there is no guarantee that interference will not occur in a particular installation. If this equipment does cause harmful interference to radio or television reception, which can be determined by turning the equipment off and on, the user is encouraged to try to correct the interference by one or more of the following measures:

- Reorient or relocate the receiving antenna.
- Increase the separation between the equipment and receiver.
- Connect the equipment into an outlet on a circuit different from that to which the receiver is connected.
- Consult the dealer or an experienced radio/TV technician for help.

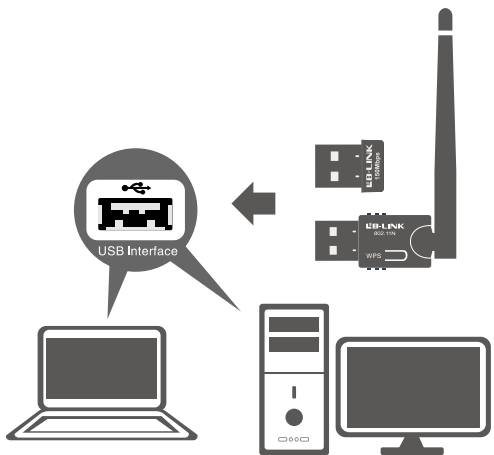
Specific Absorption Rate (SAR) information:

This 150Mbps Wireless USB Adapter meets the government's requirements for exposure to radio waves. The guidelines are based on standards that were developed by independent scientific organizations through periodic and thorough evaluation of scientific studies. The standards include a substantial safety margin designed to assure the safety of all persons regardless of age or health.
 FCC RF Exposure Information and Statement The SAR limit of USA (FCC) is 1.6 W/kg averaged over one gram of tissue. The device has also been tested against this SAR limit. The highest SAR value reported under this standard during product certification for use properly worn on the body is 1.148W/kg. This device was tested for typical body-worn operations with the back of the handset kept 1.5cm from the body. To maintain compliance with FCC RF exposure requirements, use accessories that maintain a 1.5cm separation distance between the user's body and the back of the handset. The use of belt clips, holsters and similar accessories should not contain metallic components in its assembly. The use of accessories that do not satisfy these requirements may not comply with FCC RF exposure requirements, and should be avoided.

2. Software Installation

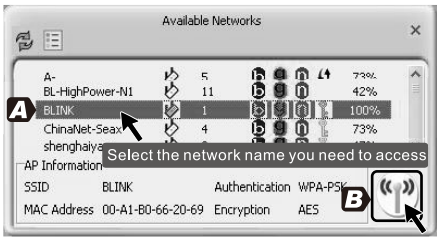
The software installation process under Vista / Win7/Win8 is roughly the same, take Windows Xp system as an example.

1. Hardware Installation

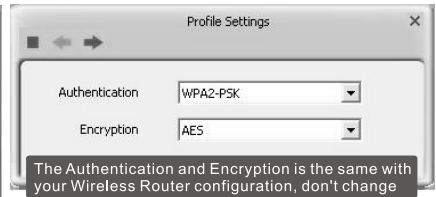


Mode 1: Wireless network card access to the wireless network

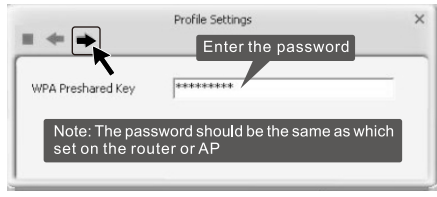
3



4



5

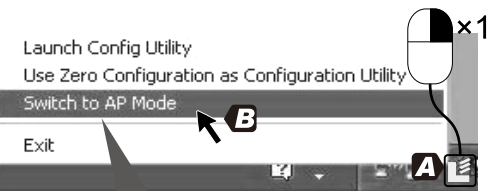


6

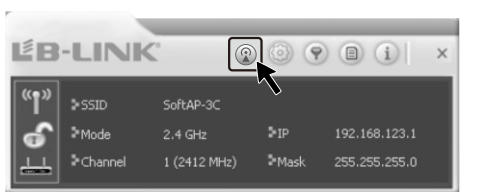


Mode 2: Wireless NIC set to AP Before switch to AP mode, turn off the computer's firewall and other protective procedures

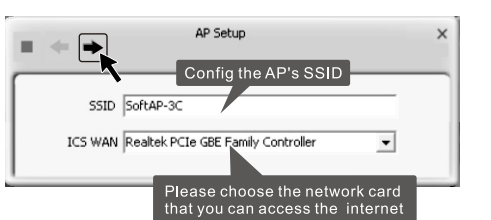
1



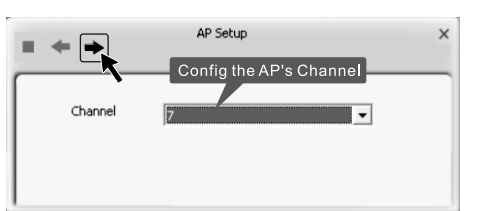
2



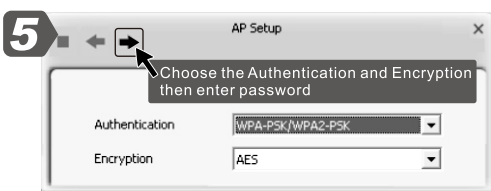
3



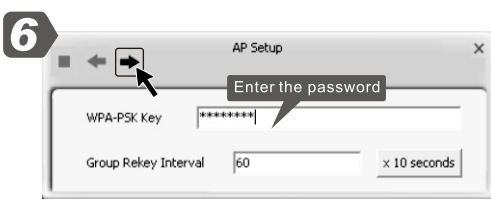
4



5



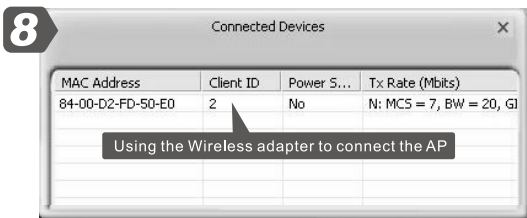
6



7



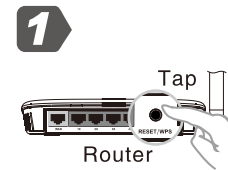
8



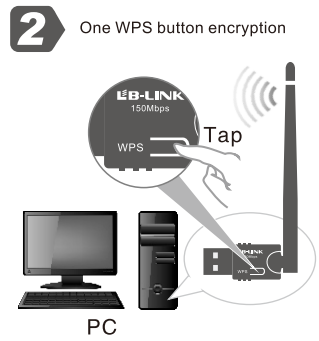
Additional function: WPS (Wi-Fi Security) Set

WPS encryption process must be completed within two minutes

1



2



Note:
Press router's WPS button, then press adapter's WPS button in 5 seconds until the adapter's led light is flashing

