

The logo for LB-LINK, featuring a stylized 'L' icon composed of three horizontal lines of varying lengths, followed by the text 'B-LINK' in a bold, sans-serif font with a registered trademark symbol.

**LB-LINK®**

The background of the cover features a complex, abstract graphic of overlapping, curved lines in shades of gray, creating a sense of depth and movement. A dark gray triangle with white horizontal lines is visible in the upper right corner.

## **Quick Installation Guide**

**Model:BL-WMR8300**

**300Mbps Wireless N ADSL2 Modem Router**

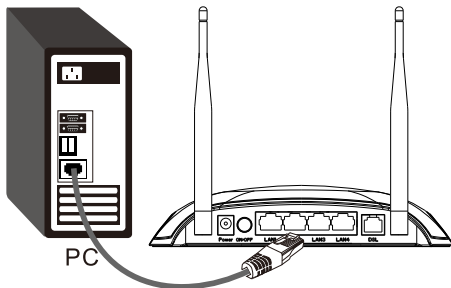
# 1. Connecting the device



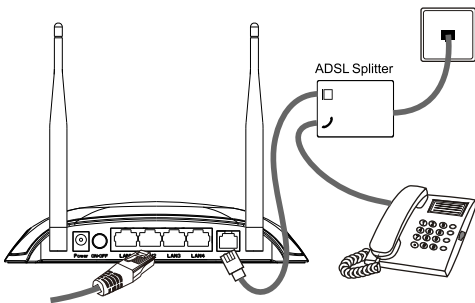
**Note:** Please use only wired network connections to configure the router.

- 1 Power down all your network devices, including your computer(s) and the Modem Router. If you currently use a modem, disconnect it now - the Modem Router will replace your current modem.

- 2 Connect your computer to the Port labeled "1~4" on the Router with an Ethernet cable.

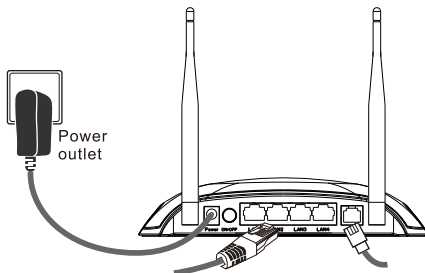


- 3 Connect the splitter to the wall jack using a telephone line, then use the other telephone line to connect to the ADSL port on the Router and the MODEM port of the splitter, also have the PHONE port of the splitter connected to a telephone.



**NOTE:** If no telephone is needed, please connect the ADSL port of the Router to the wall jack using the telephone line directly.

- 4 Plug the provided Power Adapter into the Power jack on the back of the Router and the other end to a standard electrical wall socket.



- 5 Power on all your network devices and then check to see if the LEDs of the Router display normally as the diagram below describes.



**NOTE:** If the LEDs display abnormally, please check to see if all the cable connectors (power adapter, phone line and Ethernet cable) are well connected to your device. With the phone line well connected, if the ADSL LED turns off after flashing, please contact your ISP to ensure that your internet connection is active.

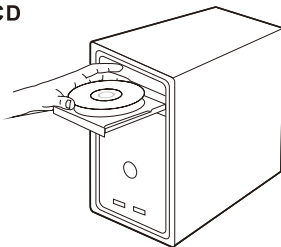
## 2. Configuring the device

**Note:** To configure the device, you can either run the setup CD-ROM (method one), or run the Web based Quick Setup Wizard (method two). We strongly recommends that you run the setup CD-ROM.

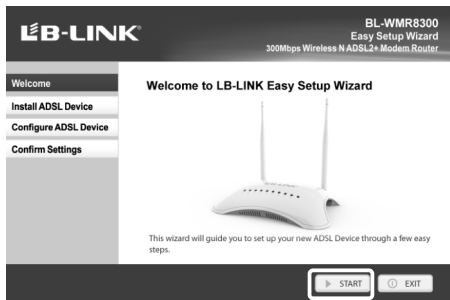
### Method One:

#### Configuring the Device via the Resourer CD

- 1 Insert the provided Resource CD into your CD-ROM drive.



- 2 The Setup Wizard will automatically pop up on your computer's screen.



Click **START**, and then follow the step-by-step instructions until you complete the configuration.

The configuration has now been completed. Please skip to **Method Two** “**3 Testing the Internet Connection**”.

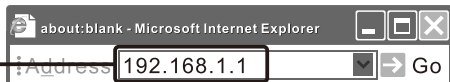
### Method Two:

#### Configuring the Device via the Web-based Quick Setup Wizard

**Note:** First of all, please configure your computer's IP address to automatically obtain, if not clear, please refer to “**FAQ3: How to configure the IP address of the computer?**”

- 1 Login

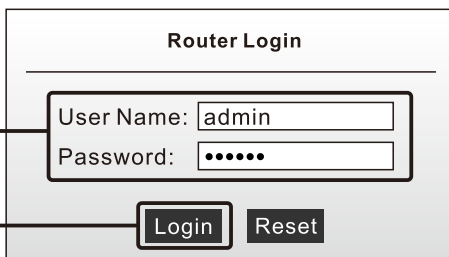
Open your web browser, input **192.168.1.1** in the address field and press **Enter**.



The web management page will prompt you for the User name and Password. Enter the default values and click **Login**.

User name: **admin**  
Password: **admin**

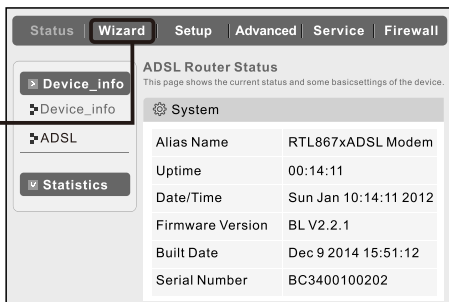
Click **Login**



The Router Login form is titled "Router Login". It contains two input fields: "User Name:" with the value "admin" and "Password:" with masked characters "•••••". Below the fields are two buttons: "Login" and "Reset".

The web management page will display after a successful login

Click **Wizard**



The ADSL Router Status page has a navigation bar with tabs: Status, Wizard, Setup, Advanced, Service, and Firewall. The "Wizard" tab is active. On the left is a sidebar with "Device\_info" (expanded), "ADSL", and "Statistics". The main content area is titled "ADSL Router Status" and includes a "System" section with the following details:

Alias Name	RTL867xADSL Modem
Uptime	00:14:11
Date/Time	Sun Jan 10 10:14:11 2012
Firmware Version	BL V2.2.1
Built Date	Dec 9 2014 15:51:12
Serial Number	BC3400100202

## 2 Fast Config

The wizard will help you do some basic configurations step by step.

### Step 1: WAN Connection Setting

Choose the **Connection Type** given by your ISP:

If **Bridge** is selected, please proceed to **A**;

If **IPoE** is selected, please proceed to **B**;

If **PPPoE** is selected, please proceed to **C**;

If **PPPoA** is selected, please proceed to **D**;

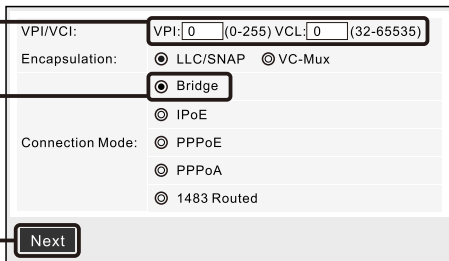
If **1483 Routed** is selected, please proceed to **E**.

### A. Configuration for Bridge

Enter the **VPI/VCI** information provided by your ISP manually

Select **Bridge**

Click **Next**



The Bridge configuration form shows the following settings:

- VPI/VCI: VPI: 0 (0-255) VCL: 0 (32-65535)
- Encapsulation:  LLC/SNAP  VC-Mux
- Connection Mode:  Bridge  IPoE  PPPoE  PPPoA  1483 Routed

A "Next" button is located at the bottom of the form.

**Note:** Bridge mode is not recommended because multiple computers are not permitted to share Internet access in this mode.

## B. Configuration for IPoE

Enter the **VPI/VCI** information provided by your ISP manually

VPI/VCI: VPI:  (0-255) VCL:  (32-65535)

Encapsulation:  LLC/SNAP  VC-Mux

Bridge

IPoE

Connection Mode:  PPPoE

PPPoA

1483 Routed

IP Protocol:

WAN IP Settings:  Attain IP Automatically

IP Manually

Default Router:  Enable  Disable

DNS Settings:  Attain DNS Automatically

Set DNS Manually

Select **IPoE**

Select Attain IP Automatically

Click **Next**

Next

## C. Configuration for PPPoE

Enter the **VPI/VCI** information provided by your ISP manually

VPI/VCI: VPI:  (0-255) VCL:  (32-65535)

Encapsulation:  LLC/SNAP  VC-Mux

Bridge

IPoE

Connection Mode:  PPPoE

PPPoA

1483 Routed

IP Protocol:

PPP Settings: Username:  Password:

Default Router:  Enable  Disable

DNS Settings:  Attain DNS Automatically

Set DNS Manually

Select **PPPoE**

Enter the **username and password** provided by your ISP

Click **Next**

Next

## D. Configuration for PPPoA

Enter the **VPI/VCI** information provided by your ISP manually

VPI/VCI: VPI:  (0-255) VCI:  (32-65535)

Encapsulation:  LLC/SNAP  VC-Mux

Bridge

IPoE

Connection Mode:  PPPoE

PPPoA

1483 Routed

IP Protocol:

PPP Settings: Username:  Password:

Default Router:  Enable  Disable

DNS Settings:  Attain DNS Automatically

Set DNS Manually

Select **PPPoA**

Enter the **username and password** provided by your ISP

Click **Next**

Next

## E. Configuration for 1483 Routed

Enter the **VPI/VCI** information provided by your ISP manually

VPI/VCI: VPI:  (0-255) VCI:  (32-65535)

Encapsulation:  LLC/SNAP  VC-Mux

Bridge

IPoE

Connection Mode:  PPPoE

PPPoA

1483 Routed

IP Protocol:

WAN IP Settings:  Attain IP Automatically

IP Manually

IP Address:

Netmask:

Gateway:

Default Router:  Enable  Disable

DNS Settings:  Attain DNS Automatically

Set DNS Manually

Select **1483 Routed**

Enter the **1483 Routed** information provided by your ISP manually

Click **Next**

Next

## Step 2: WLAN Connection Setting

This page will then display.

Keep the default setting: **Enable**

If you want to disable Access Point, please select **Disable**.

Create a unique and easy-to-remember name for your wireless network. You can also keep default settings without the device being affected.

Select an **Encryption** type

Enter a Security Key using 8-63 characters.

Click **Next**

WLAN:  Enable  Disable

Band: 2.4GHz(B+G+N)

SSID: B-LINK\_XXXXXX

Encryption: WPA2 Mixed

WPA Authentication Mode:  Enterprise(RADIUS)  Personal(Pre-Shared Key)

Pre-Shared Key Format: Passphrase

Pre-Shared Key:

Prev Next

**Note:**The wireless security is **None** by default. You are suggested to select an **Encryption** for security settings. **WPA2-Mixed** is recommended

## Step 3: Save Setting

This page will then display.

Settings as follow:

VPI:	8
VCI:	35
Encapsulation:	LLC/SNAP
Channel Mode:	PPPoE
IP Protocol:	Ipv4
ppp username:	test
ppp password:	test
DNS Setting:	DNS Automatically
WLAN:	Enable

Next Apply Changes Cancel

Click **Apply changes**

Now, your Modem Router has been configured and is rebooting. Please do not turn off the Modem Router while it's rebooting.

## 3 Testing the Internet Connection

The basic settings for your Router are completed. Please open the web browser and log on to the following websites:

<http://www.lb-link.cn>

If the above websites can be accessed, it indicates that your Router has been configured successfully and you can start to enjoy the Internet. If the websites cannot be accessed, please refer to "**FAQ2: What can I do if I cannot access the Internet?**" in the **Troubleshooting** guide.

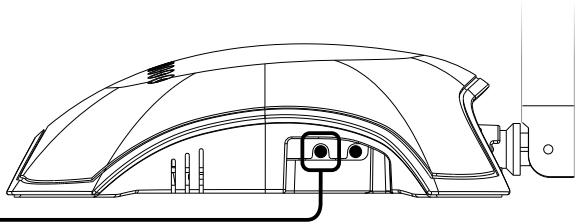


## 3. Troubleshooting

### FAQ1: What should I do if I forget the user name and password?

(How to restore the router's configuration to its factory default settings.)

Answer: If you forget the user name and password, the only way to solve this problem is to reset the router. Press and hold the RESET button on the rear panel for 8 seconds before releasing it.



Hold for 8 seconds

### FAQ2: What can I do if I cannot access the Internet?

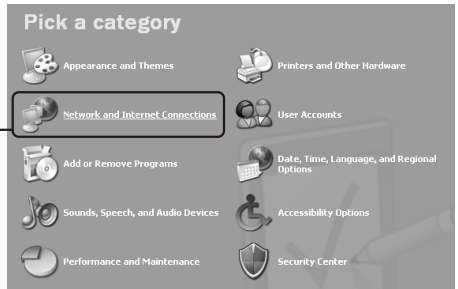
- 1) Check to see if all the connectors are connected well, including the telephone line, Ethernet cables and power adapter.
- 2) Check to see if you can log on to the web management page of the Modem Router. If you can, try the following steps. If you cannot, please set your computer referring to **FAQ3** then try to see if you can access the Internet. If the problem persists, please go to the next step.
- 3) Consult your ISP and make sure all the VPI/VCI, Connection Type, account username and password are correct. If there are any mistakes, please correct the settings and try again.
- 4) If you still cannot access the Internet, please restore your Router to its factory default settings and reconfigure your Router by following the instructions of this QIG.
- 5) Please feel free to contact our Technical Support if the problem still exists.

### FAQ3: How to configure the IP address of the computer?

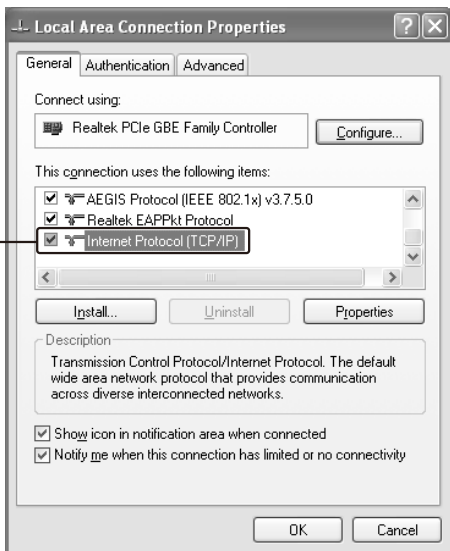
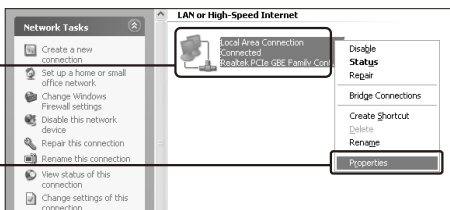
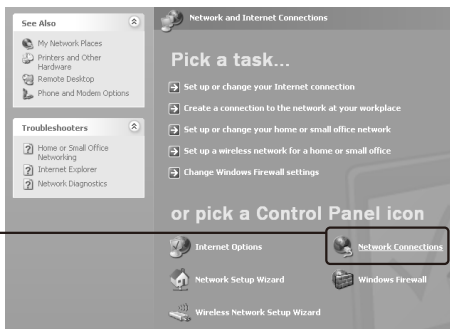
#### For Windows XP OS

Go to **Start > Control Panel**, you will then see the following page.

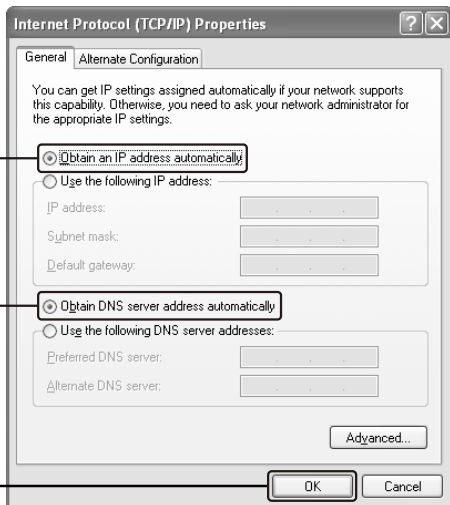
Click **Network and Internet Connections**



## For Windows XP OS



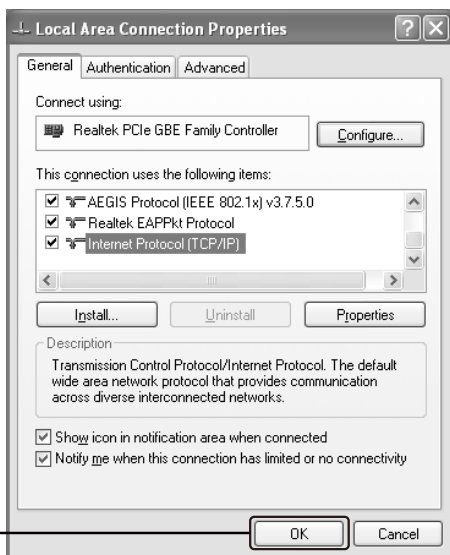
## For Windows XP OS



Select **Obtain an IP address automatically**

Select **Obtain DNS server address automatically**

Click **OK**

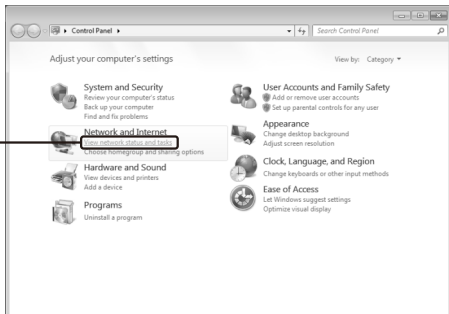


Click **OK**

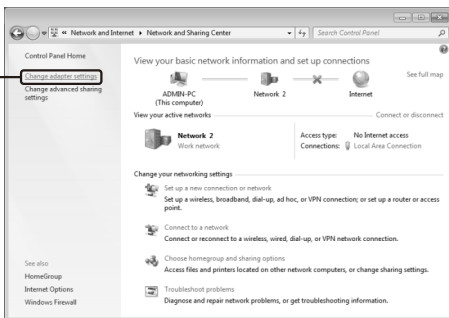
## For Windows 7 OS

Go to **Start > Control Panel**, you will then see the following page.

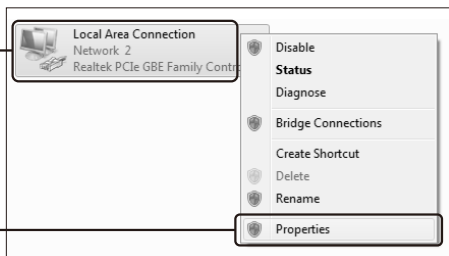
Click **View network status and tasks**



Click **Change adapter settings**

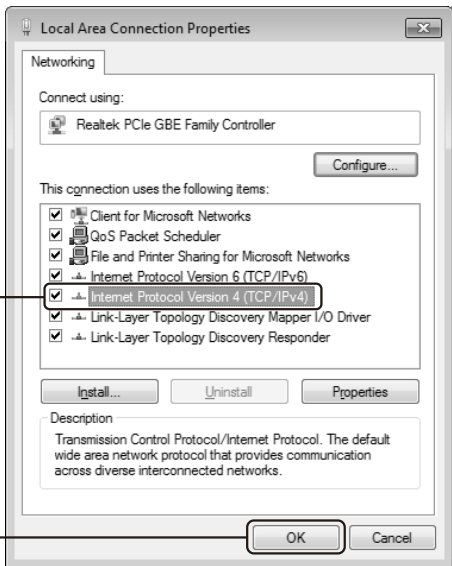


Right-click **Local Area Connection**



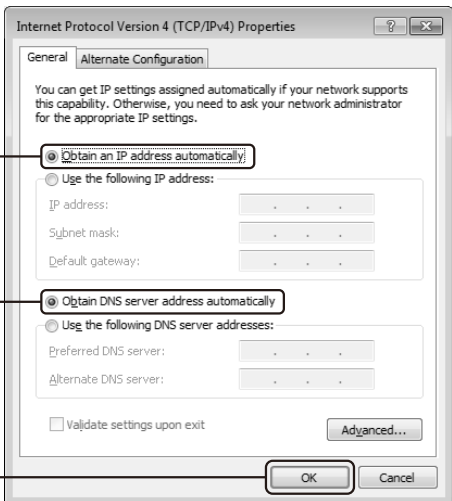
Click **Properties**

## For Windows 7 OS



Double-click **Internet Protocol Version 4 (TCP/IPv4)**

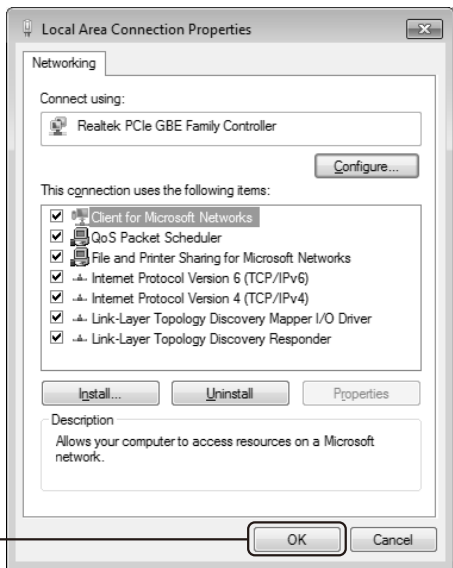
Click **OK**



Select **Obtain an IP address automatically**

Select **Obtain DNS server address automatically**

Click **OK**

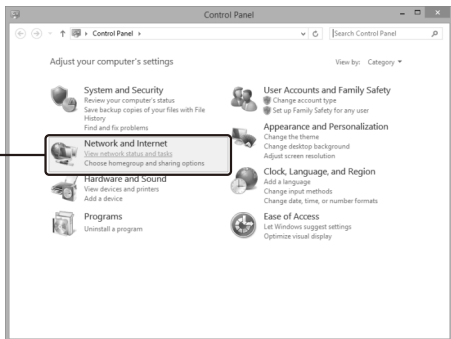


## For Windows 8 OS

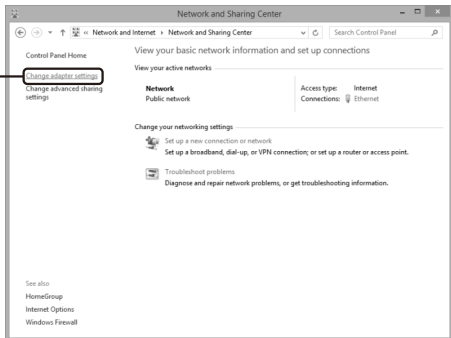
Press the Keyboard WIN() + X to pop up the menu on the Win8 Desktop, then **select Control Panel**



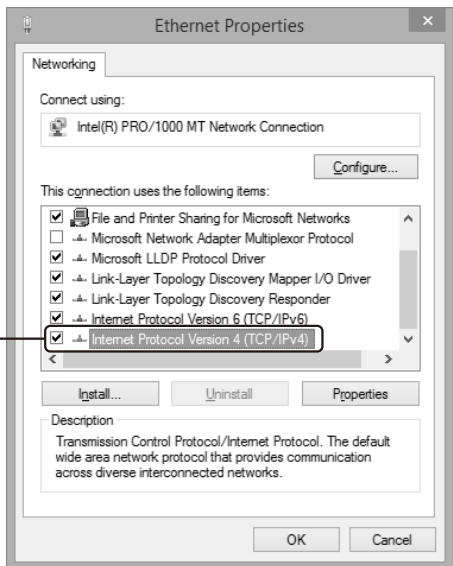
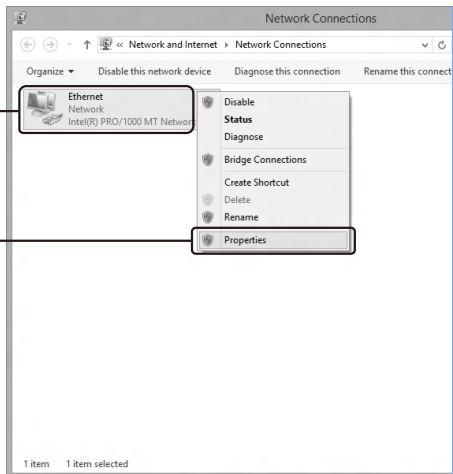
Click **View network status and tasks**



Click **Change adapter settings**

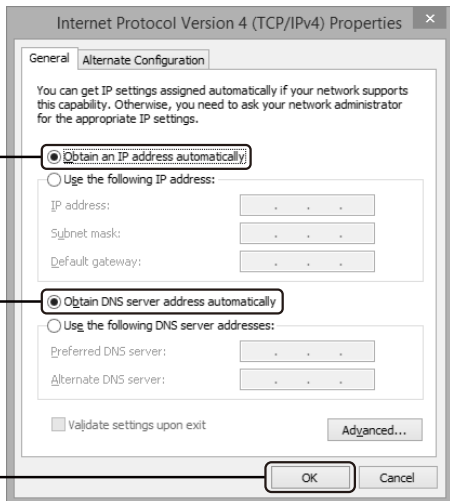


## For Windows 8 OS





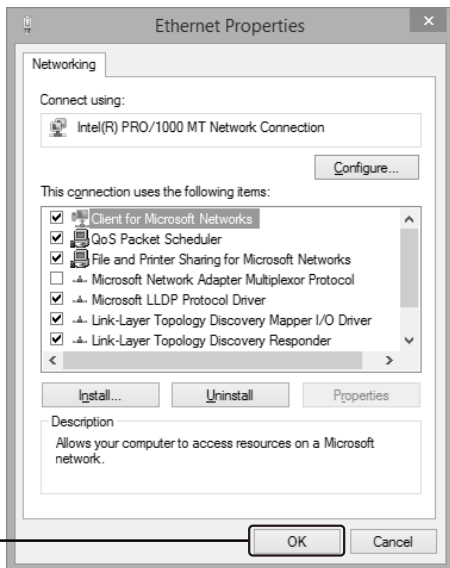
## For Windows 8 OS



Select **Obtain an IP address automatically**

Select **Obtain DNS server address automatically**

Click **OK**



Click **OK**

## SHENZHEN BILIAN ELECTRONIC CO., LTD

---

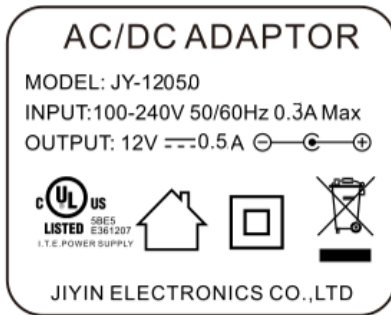
**LB-LINK** is the registered trademark of Shenzhen BILIAN Electronic CO.,Ltd.All the products and product names mentioned herein are the trademarks or registered trademarks of their respective holders © 2012 **LB-LINK** All Rights Reserved.

<http://www.lb-link.cn>

Ver 1.0

45 mm

72 mm



This device complies with Part 15 of the FCC Rules.  
Operation is subject to the following two conditions:  
(1) this device may not cause harmful interference, and (2) this device must accept any interference received, including interference that may cause undesired operation.

**RF warning:**

This equipment complies with FCC radiation exposure limits set forth for an uncontrolled environment. This equipment should be installed and operated with minimum distance 20cm between the radiator & your body.

Any Changes or modifications not expressly approved by the party responsible for compliance could void the user's authority to operate the equipment.

**Note:** This equipment has been tested and found to comply with the limits for a Class B digital device, pursuant to part 15 of the FCC Rules. These limits are designed to provide reasonable protection against harmful interference in a residential installation. This equipment generates uses and can radiate radio frequency energy and, if not installed and used in accordance with the instructions, may cause harmful interference to radio communications. However, there is no guarantee that interference will not occur in a particular installation. If this equipment does cause harmful interference to radio or television reception, which can be determined by turning the equipment off and on, the user is encouraged to try to correct the interference by one or more of the following measures:

- Reorient or relocate the receiving antenna.
- Increase the separation between the equipment and receiver.
- Connect the equipment into an outlet on a circuit different from that to which the receiver is connected.
- Consult the dealer or an experienced radio/TV technician for help.