



Global Product Certification
EMC-EMF Safety Approvals

Melbourne 176 Harrick Road
Keilor Park, Vic 3042
Tel: +61 3 9365 1000

Sydney Unit 3/87 Station Road
Seven Hills, NSW 2147
Tel: +61 2 9624 2777

Email: emc-general@emctech.com.au
Web: www.emctech.com.au

APPENDIX D EXTERNAL IDENTIFICATION PHOTOGRAPHS - HOST

Report Number: S200203-1 v1

FCC ID: S7R-BIRDIRRA
IC ID: 25706-BIRDIRRA

Tested For: Taggle Systems Pty Ltd
Device under Test: Birdirra 900MHz LPWAN
Transmitter Module

Model Number: Birdirra
Serial Number: 131048

Issue Date: 19th May 2020

EMC Technologies Pty Ltd reports apply only to the specific samples tested under stated test conditions. It is the manufacturer's responsibility to assure that additional production units of this model are manufactured with identical electrical and mechanical components. EMC Technologies Pty Ltd shall have no liability for any deductions, inferences or generalisations drawn by the client or others from EMC Technologies Pty Ltd issued reports. This report shall not be used to claim, constitute or imply product endorsement by EMC Technologies Pty Ltd.



Accredited for compliance with ISO/IEC 17025. The results of the test, calibrations and/or measurement included in this document are traceable to Australian/national standards. NATA is a signatory to the ILAC Mutual Recognition Arrangement for the mutual recognition of the equivalence of testing, calibration and inspection reports.

Except for the certificate of page 3 this document may only be reproduced in full.

REVISION TABLE

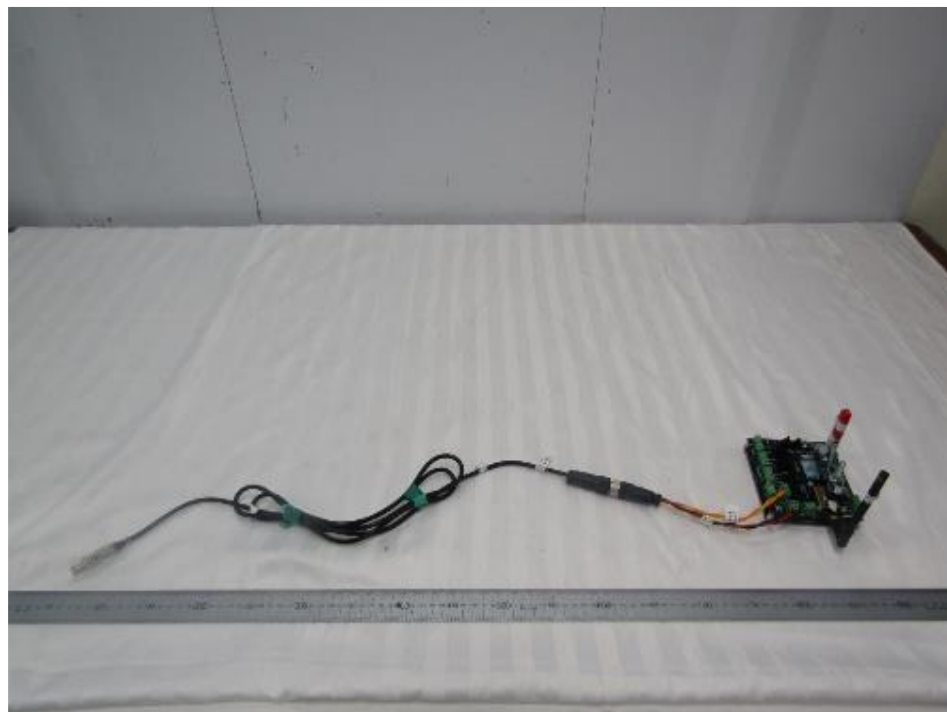
Version	Sec/Para Changed	Change Made	Date
1		Initial issue of document	19/05/2020



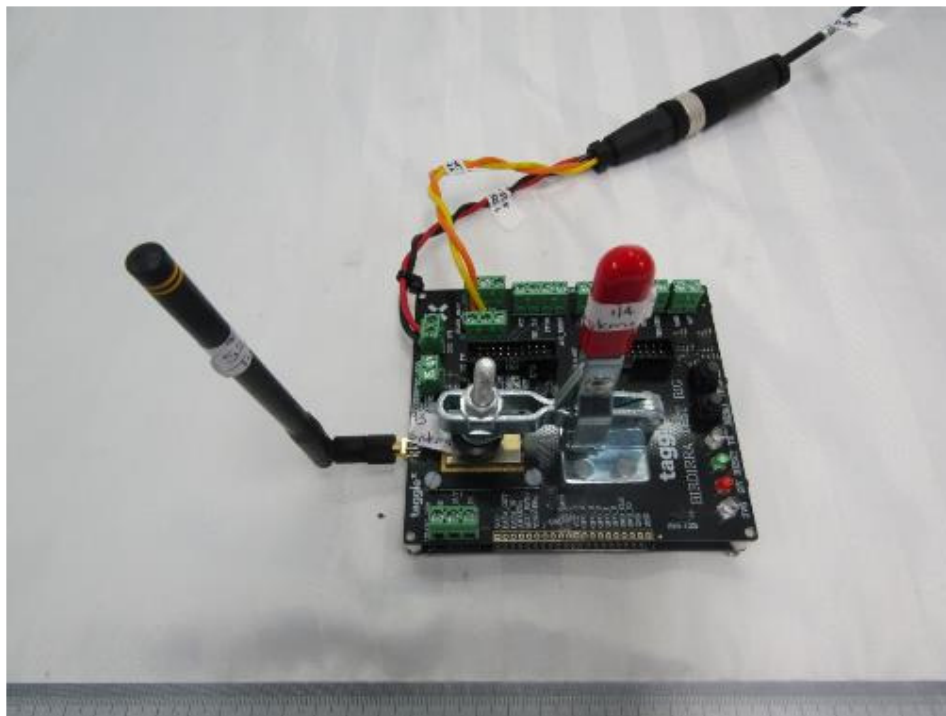
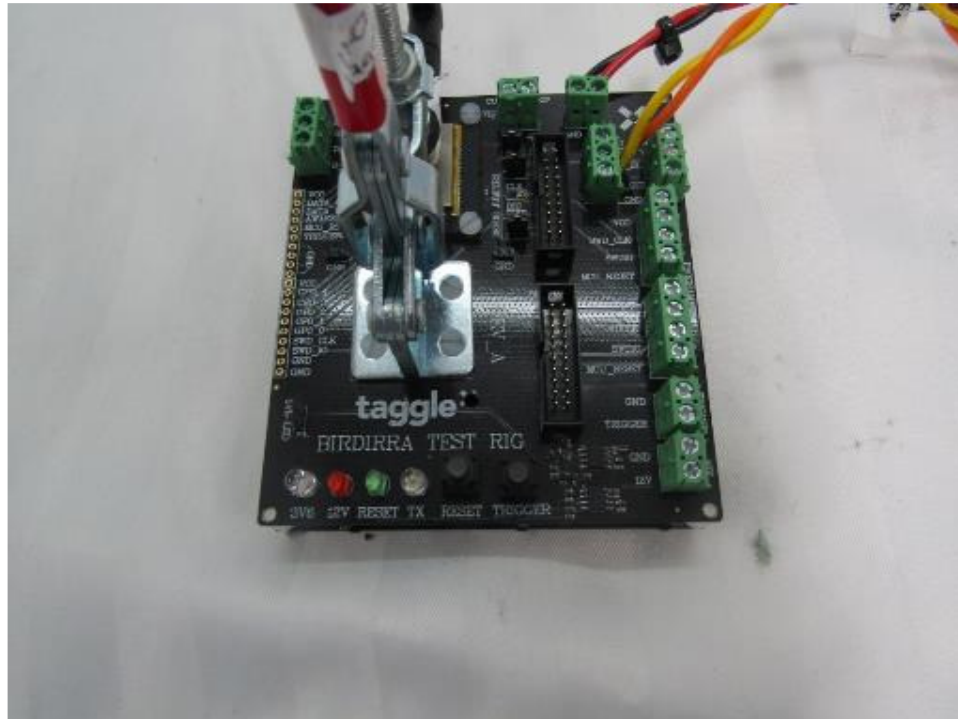
Accredited for compliance with ISO/IEC 17025-Testing. The results of the test, calibrations and/or measurement included in this document are traceable to Australian/national standards. NATA is a signatory to the ILAC Mutual Recognition Arrangement for the mutual recognition of the equivalence of testing, medical testing, calibration and inspection reports.

This document may only be reproduced in full with exception of Certificate of Compliance

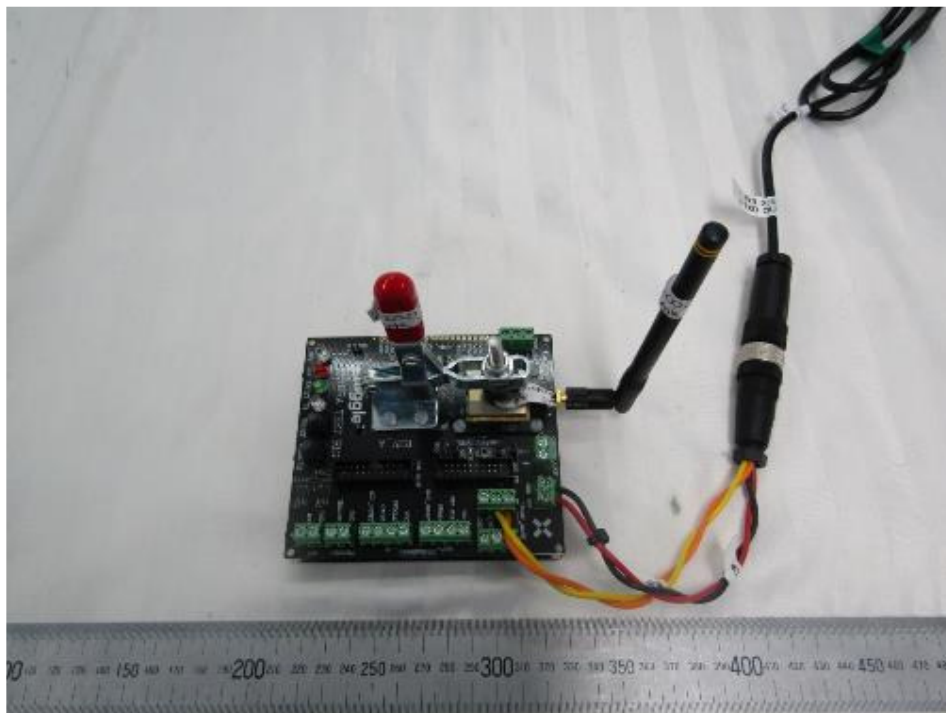
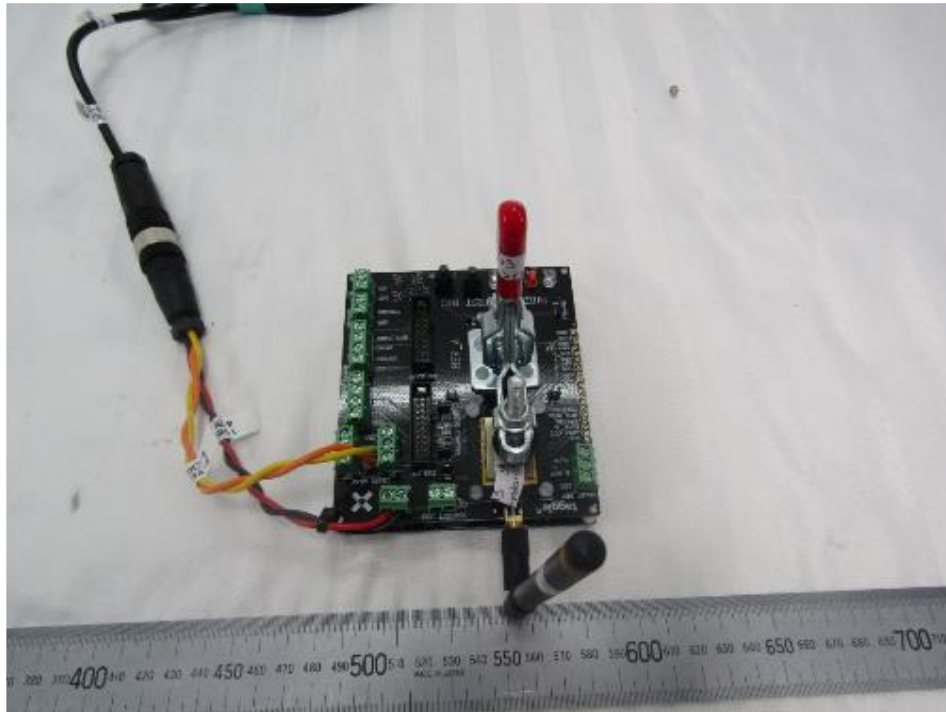
APPENDIX D1 EXTERNAL IDENTIFICATION PHOTOGRAPHS



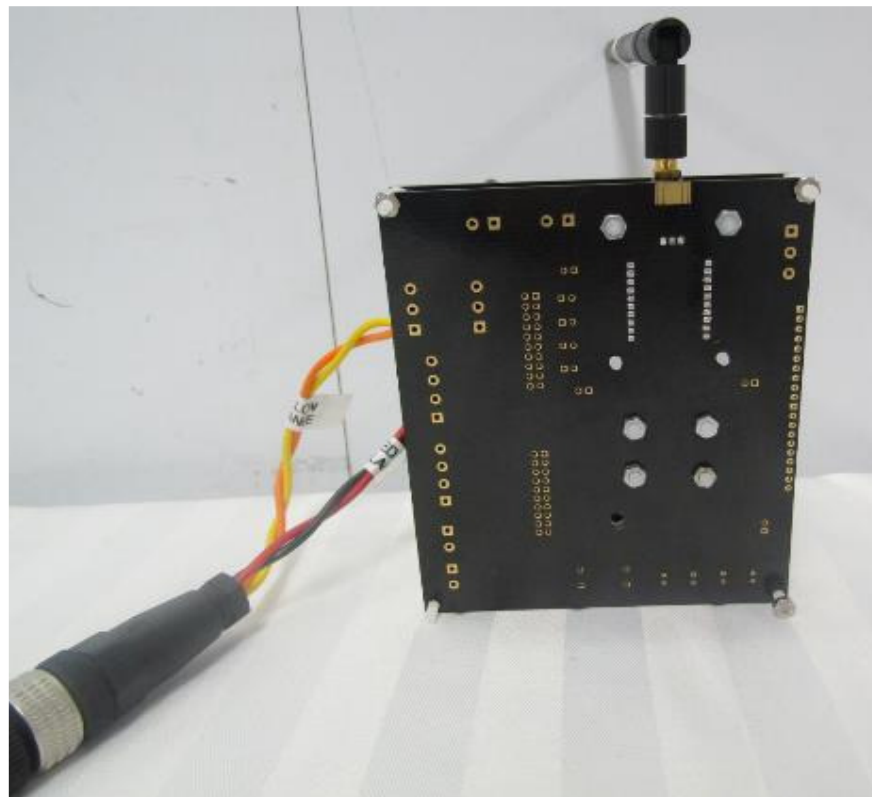
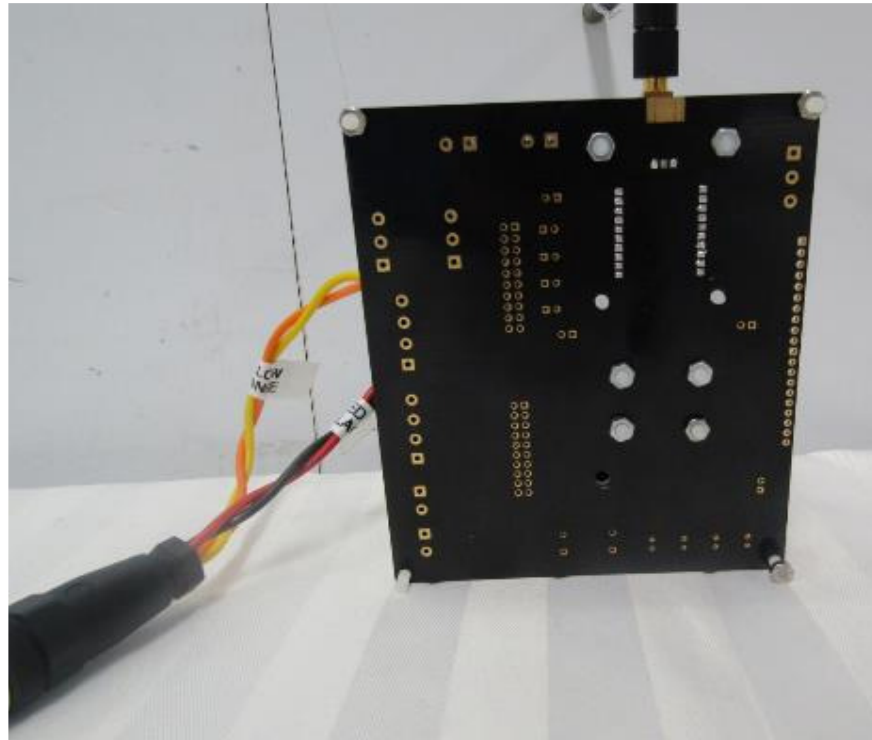
APPENDIX D2 EXTERNAL IDENTIFICATION PHOTOGRAPHS



APPENDIX D3 EXTERNAL IDENTIFICATION PHOTOGRAPHS



APPENDIX D4 EXTERNAL IDENTIFICATION PHOTOGRAPHS



APPENDIX D5 EXTERNAL IDENTIFICATION PHOTOGRAPHS

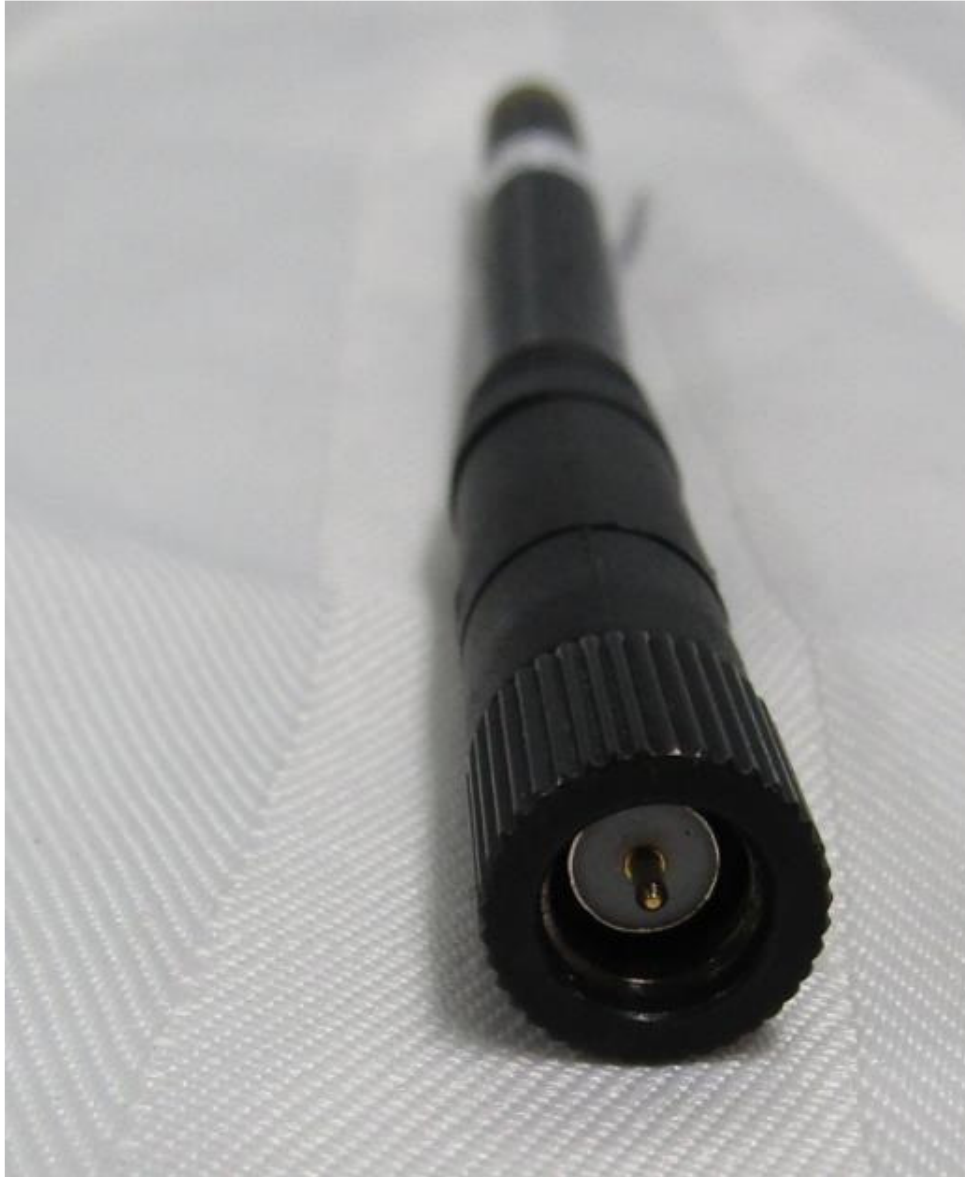


APPENDIX D6 EXTERNAL IDENTIFICATION PHOTOGRAPHS



APPENDIX D7 EXTERNAL IDENTIFICATION PHOTOGRAPHS

Antenna



Accreditation No.5292

Accredited for compliance with ISO/IEC 17025-Testing. The results of the test, calibrations and/or measurement included in this document are traceable to Australian/national standards. NATA is a signatory to the ILAC Mutual Recognition Arrangement for the mutual recognition of the equivalence of testing, medical testing, calibration and inspection reports.

This document may only be reproduced in full with exception of Certificate of Compliance

APPENDIX D8 EXTERNAL IDENTIFICATION PHOTOGRAPHS

Antenna



APPENDIX D9 EXTERNAL IDENTIFICATION PHOTOGRAPHS

Accessories – Laptop

