

1) How does this device operate?

XF195T is a digital tuning FM transmitter with a FM transmitter, a car adapter and a USB port, a Line-In jack, a safety fuse, a Line-in cable, a MCU controller, a LCD display, as well as an audio detector, in addition to one press keys which are used to turn the proper FM frequency.

The FM transmitter is a FM stereo transmitting configuration, which radiates FM wave on the air by modulating the any required signal to the carrier signal. The transmission frequency is set from 88.1 to 88.9MHz & 106.7 to 107.9MHz (step freq.:0.2MHz)

[Basic Operations]

Function	Operation
Play/Pause	Press the ►/ key to play music, the LED is flashing during playback, and the frequency display displays current channel. Press the ►/ key to pause, after about 30 seconds, the device stop transmitting and displays nothing with LED steadily on. To resume, press it again.
Switch Play Mode	Press and hold the ►/ key for a while to switch play mode. The device provides two play modes: Repeat All and Random. Note: <i>In the Repeat All mode, the LED flashes slowly. In the Random mode, the LED flashes quickly.</i>
Previous/Next	Press the ◀◀ key to play the previous track or press the ▶▶ key to play the next track.
Switch Channel	Press the “CH” key to switch between 12 preset channels. When you switch to a certain channel, the frequency is indicated on the display. Note: <i>The 12 preset channels are 88.1, 88.3, 88.5, 88.7, 88.9, 106.7, 106.9, 107.1, 107.3, 107.5, 107.7, 107.9 MHz.</i>


[Play music on a removable disk]

1. Plug the USB flash disk that stores audio files into the USB port.
2. Insert the device into the cigarette lighter socket to draw 12 V DC power.
3. Press the “CH” key to select the preset channel without signal interference. You see the selected frequency indicated on the display.
4. Tune the car FM radio to the same channel as indicated on the display.
5. Now you can enjoy your music by controlling the keys on the device. For detail information about operation, see “Basic Operation” section.

[Play music on an extra audio player]

The device supports LINE-IN feature that enables you to enjoy the music from an external audio device such as CD, MD player, iPod etc. The external audio source comes into the device through the line-in jack and is transmitted to the FM tuner by the built-in FM transmitter. You enjoy the music through the FM stereo audio system.

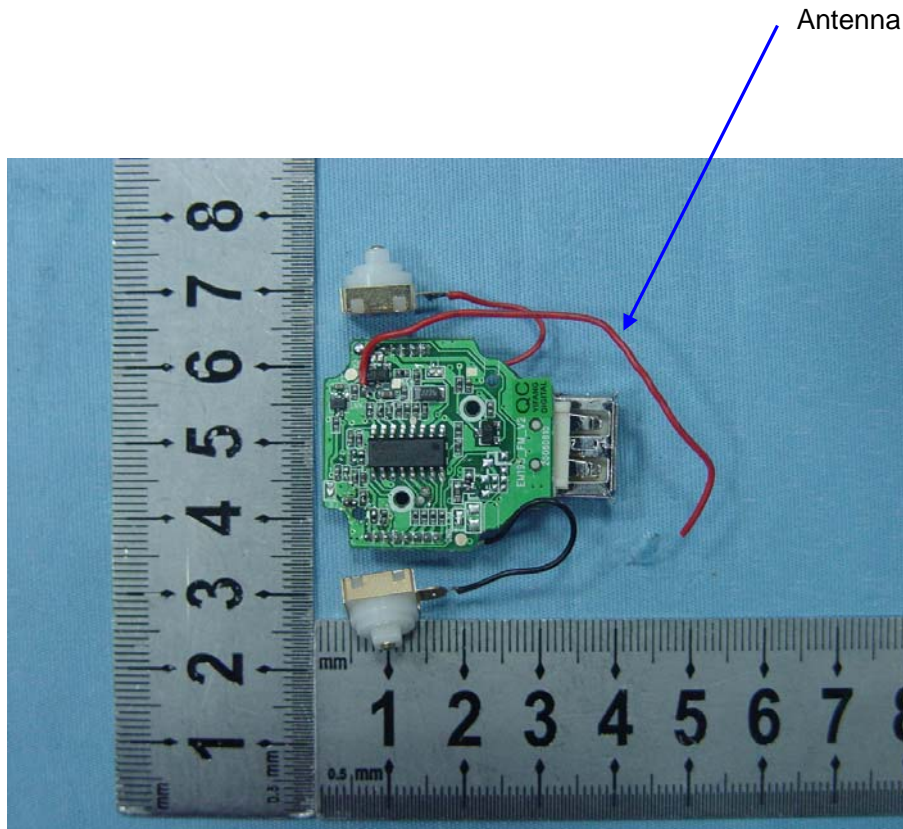
1. Connect one end of the LINE-IN cable to the line-in jack of the device and connect the other end to the earphone jack of the external audio device.
2. Turn on the external audio player and play the music.
3. Press the "CH" key to select the preset channel without signal interference. You see the selected frequency indicated on the display.
4. Tune the car FM radio to the same channel as indicated on the display.
5. Now you can enjoy music with keys on the audio player.

 **Note:** (1) All keys except channel switch are unavailable when you use the line-in function. You can only use the keys on the extra audio player to control the playback. (2) When the playback pauses, the device stops transmitting and displays nothing.

This product can be powered by an DC to DC regulator within the cigarette-lighter adapter. The DC regulator transforms input DC to DC5V as the whole system's power.

2) Provide information on the device and its antenna.

This product is designed to transmit audio signal from iPod, USB flash disk, MP3 player, CD player, MD player etc. external audio player to car stereo. The transmitter utilizes dipole antenna. The antenna was soldered to PCB.



3) How is it installed?

The transmitter is powered from 12V in car. It can be connected to the car power socket outlet only.

4) What test procedure was used?

ANSI C63.4, the test was performed in a semi-anechoic chamber.

5) If tested in a car, how was it configured/tested?

Not tested in a car, it was tested in a chamber.

6) Was the tuning range properly verified? The test lab should indicate in the report that the tuning controls were manually adjusted to verify maximum tuning range.

The FM transmitter is a FM stereo transmitting configuration, which radiates FM wave on the air by modulating the any required signal to the carrier signal. The transmission frequency is set from 88.1 to 88.9MHz & 106.7 to 107.9MHz (step freq.:0.2MHz)

We selected the low (88.1MHz) mid 1 (88.9MHz), mid 2 (106.7MHz) and High (107.9MHz) working frequency to measure the frequency. Press the "CH" key to select the transmission frequency .

We have indicated the testing in the test report, see clause 6.

7) Was the bandwidth properly tested with maximum audio input?

The test was performed with the maximum audio input. And play typical audio signal(music song).

We have indicated the operating condition in the test report, see clause 5.3.