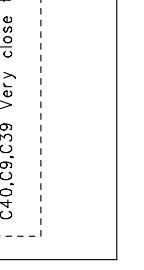
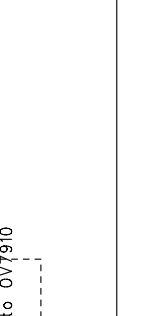
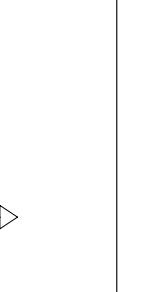
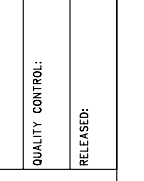
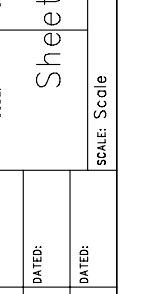
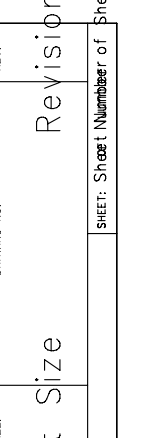
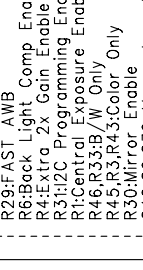
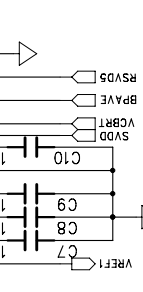
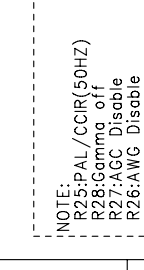
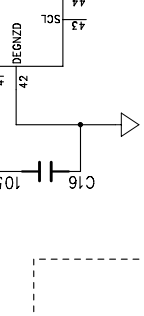
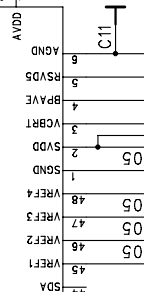
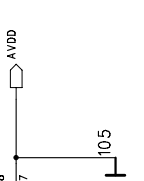
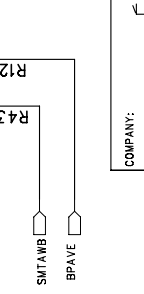
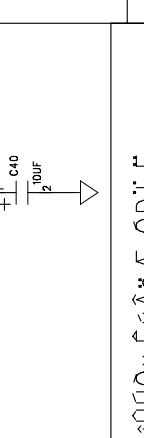
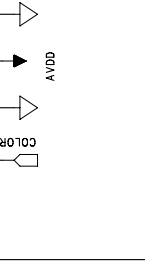
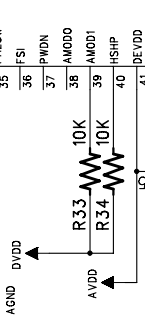
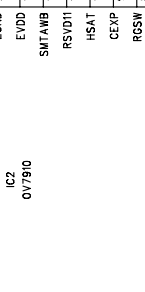
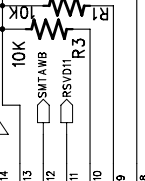
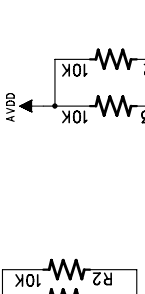
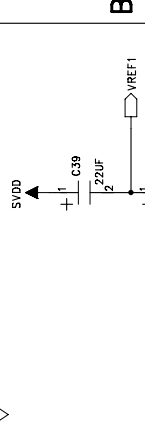
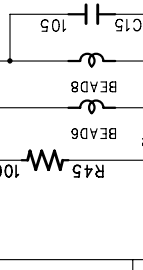
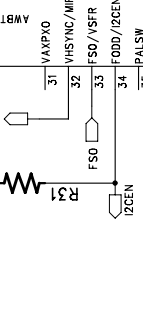
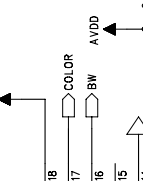
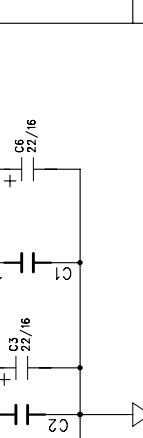
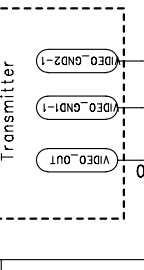
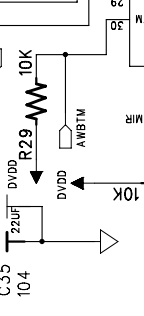
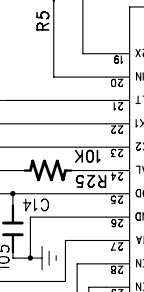
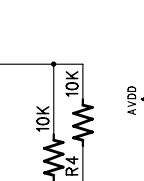
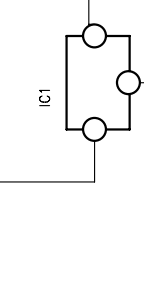
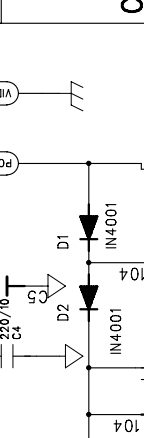
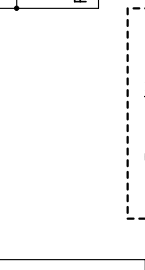
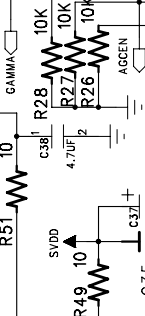
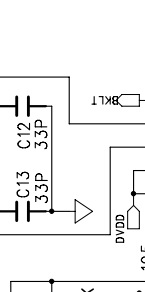
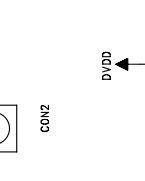
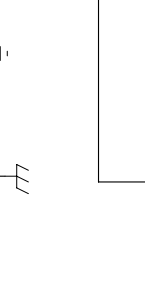
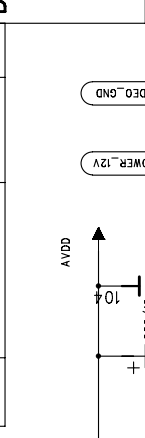
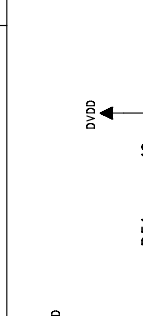
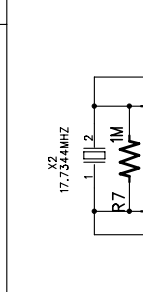
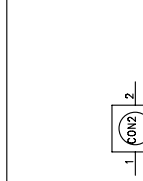
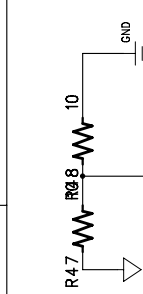


REVISION RECORD	
LTR	APPROVED:
ECD NO:	DATE:



NOTE:
 R25:PAL/CCIR(50HZ)
 R28:Gamma off
 R27:AGC Disable
 R26:AWG Disable
 R29:FAST_AWB
 R6:Back Light Comp Enable
 R4:Extra 2x Gain Enable
 R3:i2C Programming Enable
 R1:Central Exposure Enable
 R46,R33:B/W Only
 R45,R3,R43:Color Only
 R30:Mirror Enable
 C40,C9,C39 Very close to OV7910

COMPANY:	ΕΙΘΟΥΧ ΕΥΑΞΑ ΟΘΙΕ
TITLE:	Εἰñ10V7910çΑ0À11
DRAWN:	ÀÈÈ
CHECKED:	
QUALITY CONTROL:	
RELEASED:	
DATE: Drawn Date	
DATE:	
DATE:	
DATE:	
CODE:	
SIZE:	Sheet Size
DRAWING NO:	Revision
REV:	
SCALE:	Scale
SHEET:	Sheet Number of Sheets