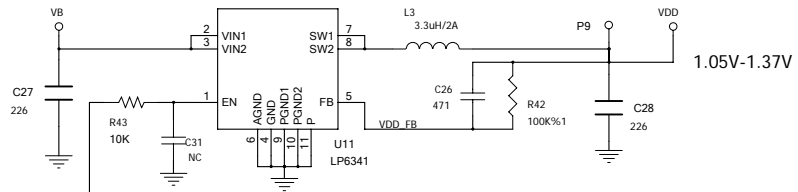
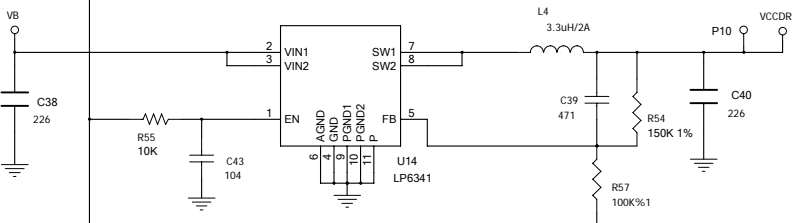
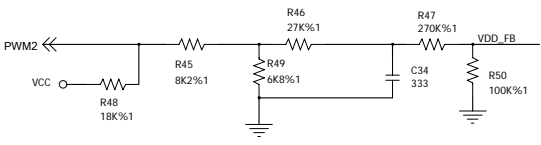


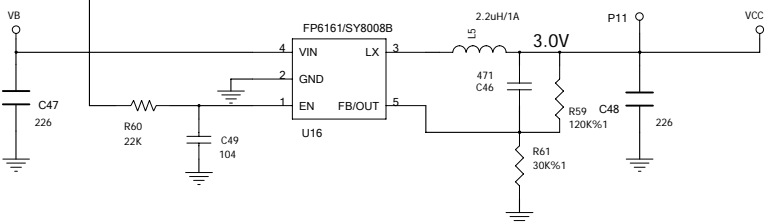
易方数码股份有限公司		
Title: M726HC		
File: AC/CHARG	REV: 1.3	
Create Date:	2 Page Num:	
Modify Date: Tuesday, December 14, 2010	Page Total: 11	



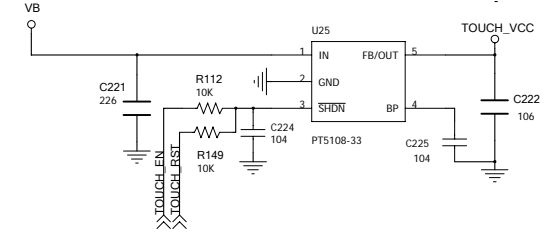
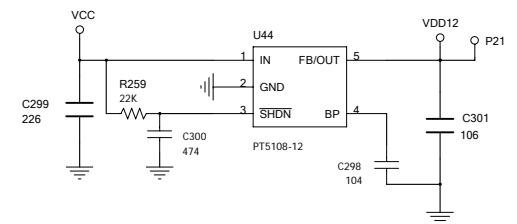
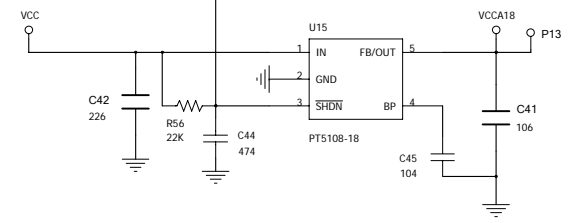
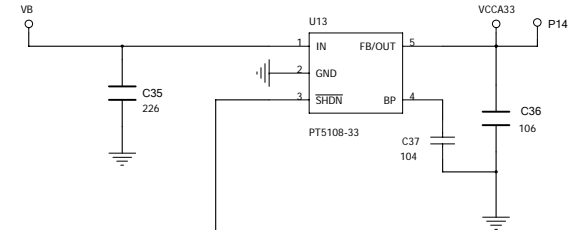
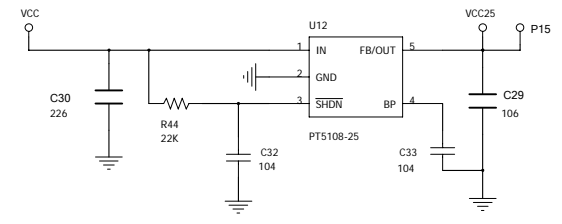
1.05V-1.37V



1.5V



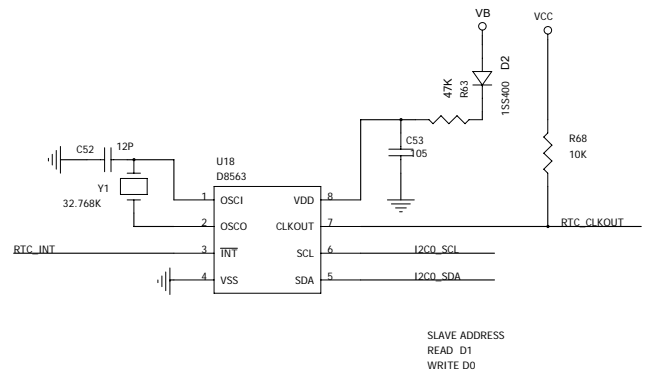
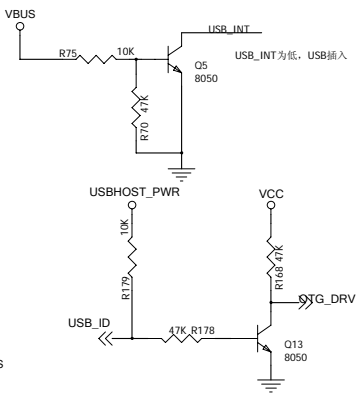
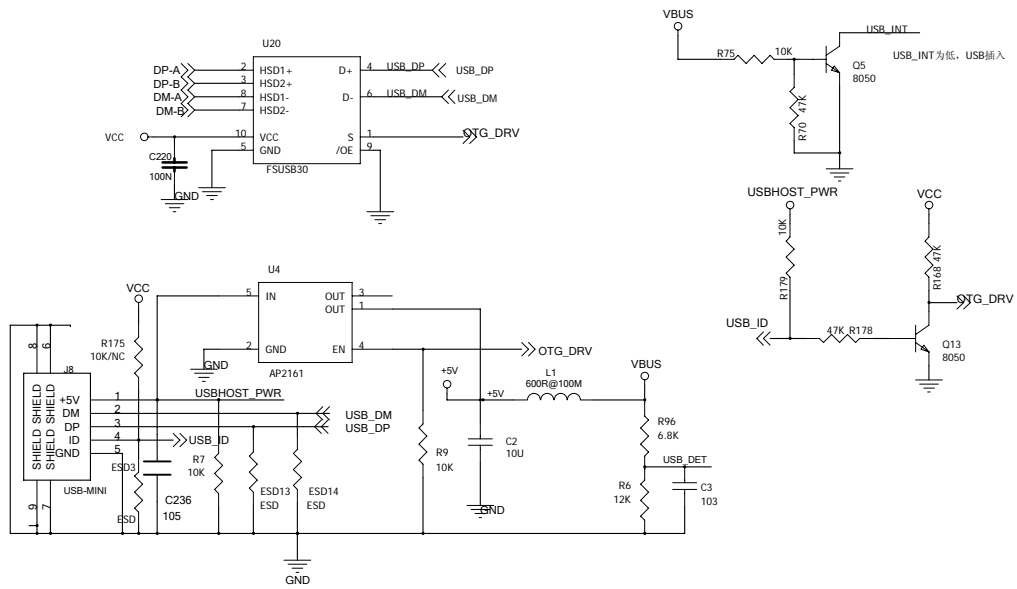
3.0V



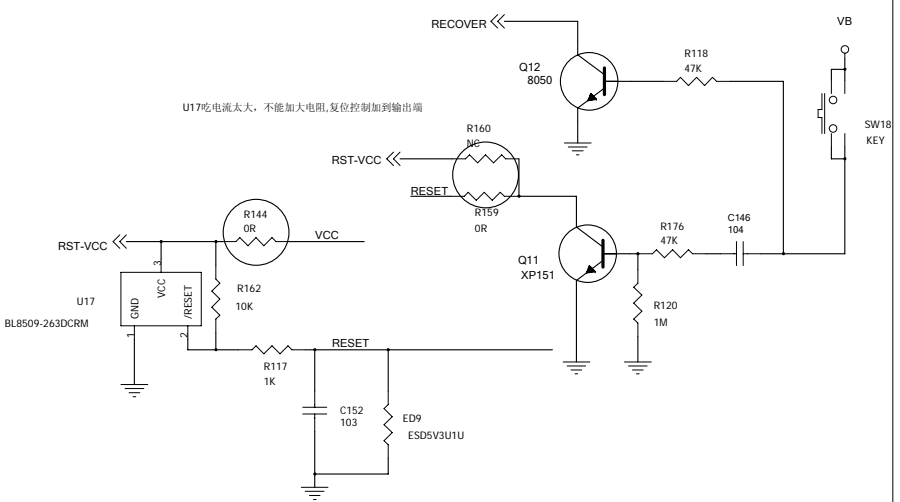
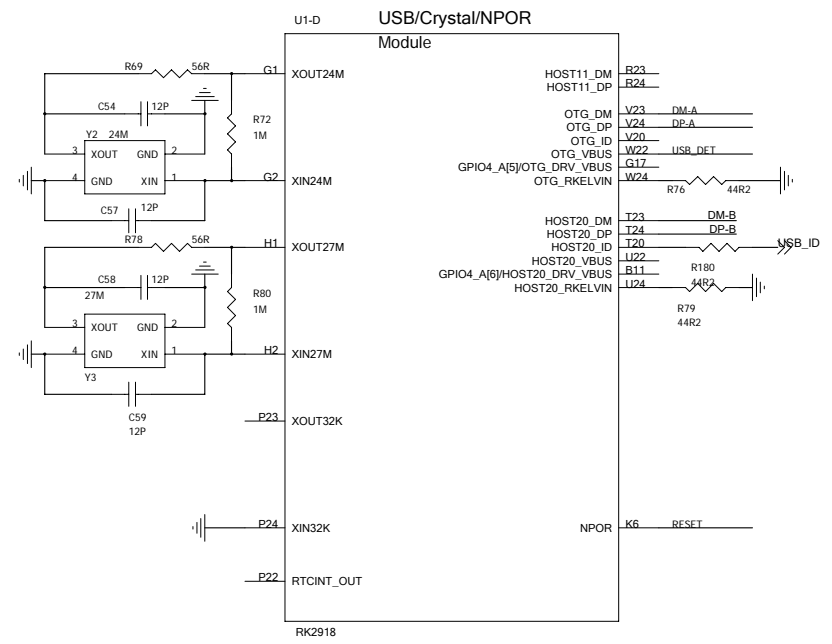
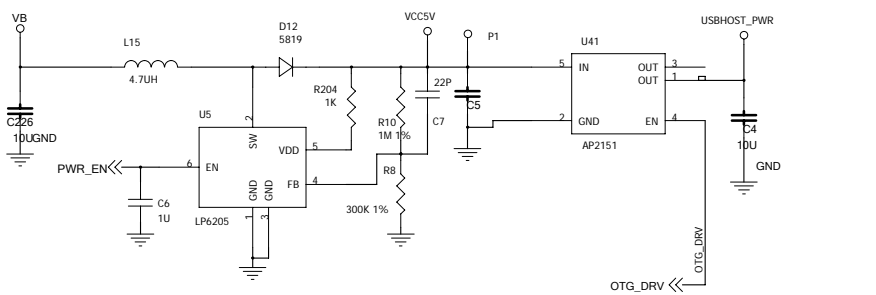
SYSTEM POWER

易方数码股份有限公司

Title: M726HC	
File: SYSTEM POWER	REV: 1.3
Create Date: Tuesday, December 14, 2010	Page Num: 3
Modify Date: Tuesday, December 14, 2010	Page Total: 11



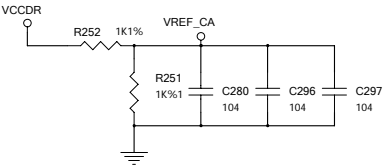
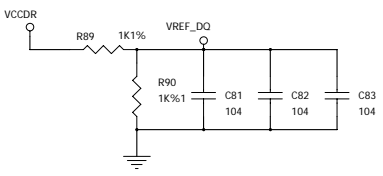
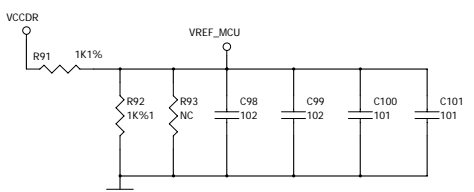
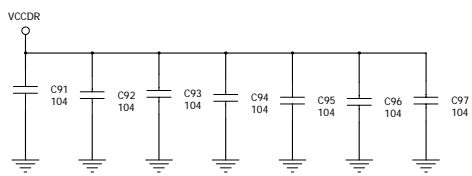
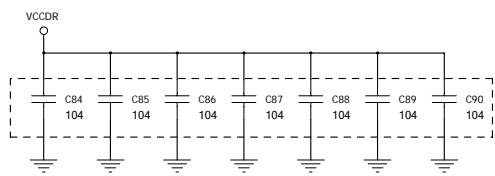
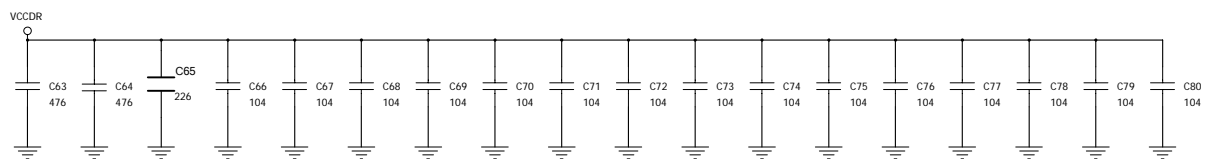
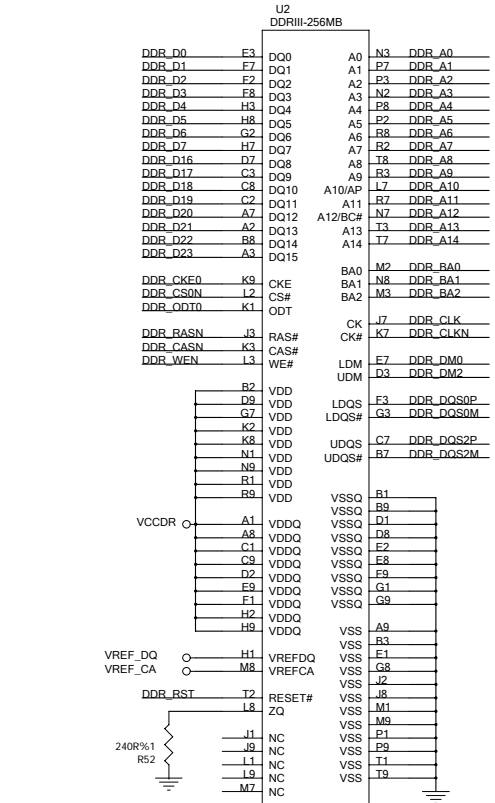
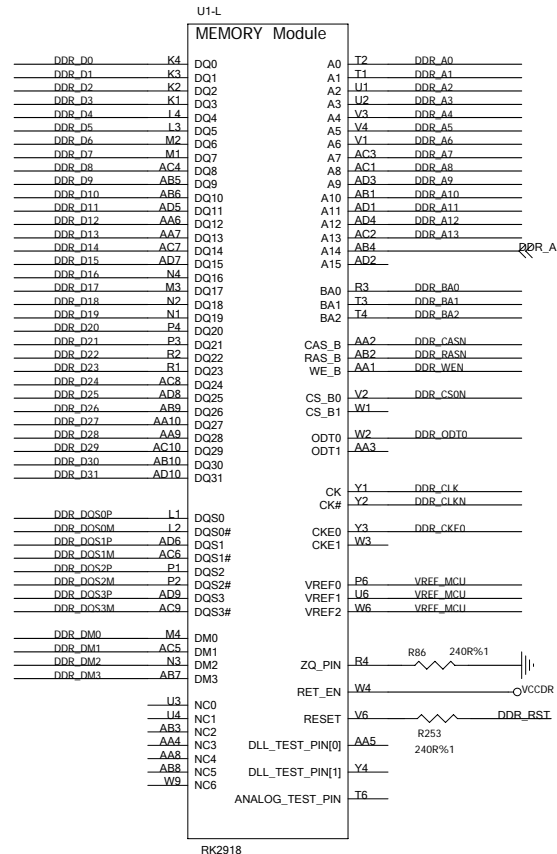
RTC



RESET

易方数码股份有限公司

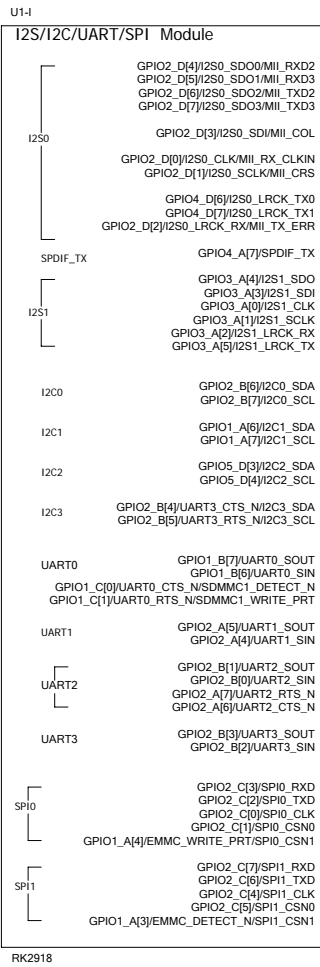
Title: M726HC	
File: USB_HOST/RTC/VIB	REV: 1.3
Create Date: Tuesday, December 14, 2010	Page Num: 4
Modify Date: Tuesday, December 14, 2010	Page Total: 11



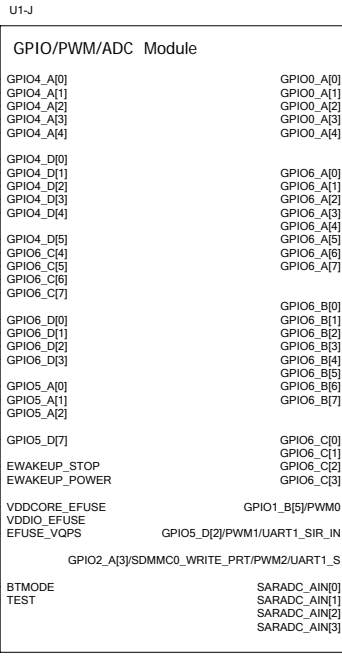
DDRII

易方数码股份有限公司

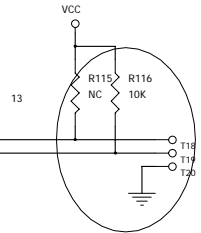
Title:	M726HC	REV: 1.3
File:	DDRII	
Create Date:		Page Num: 5
Modify Date:	Tuesday, December 14, 2010	Page Total: 11



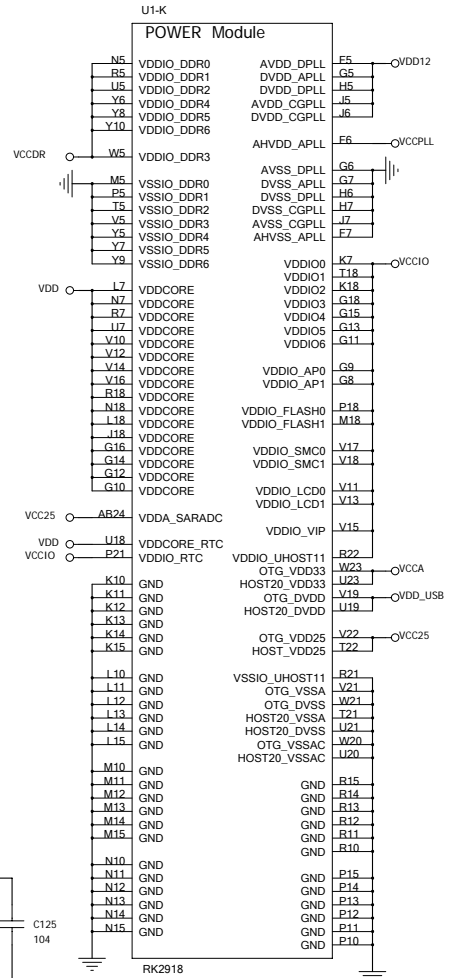
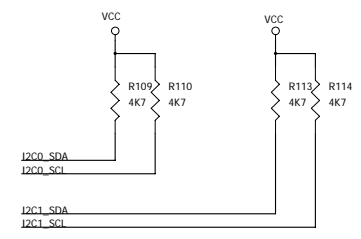
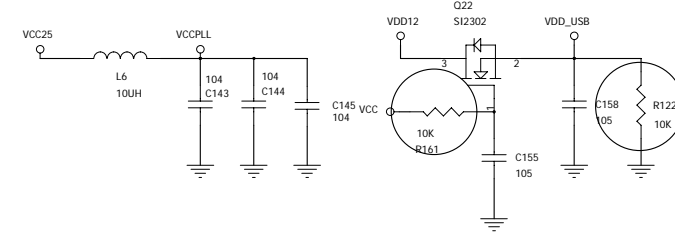
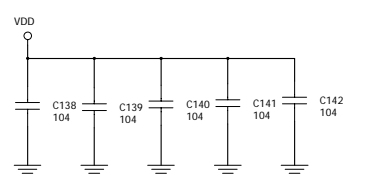
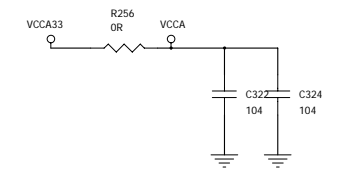
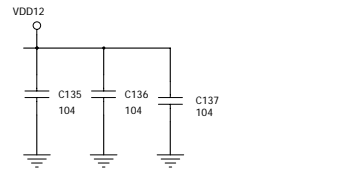
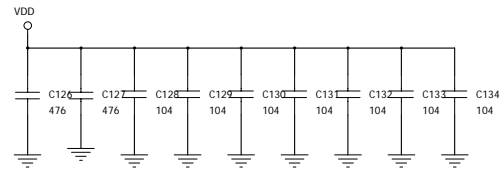
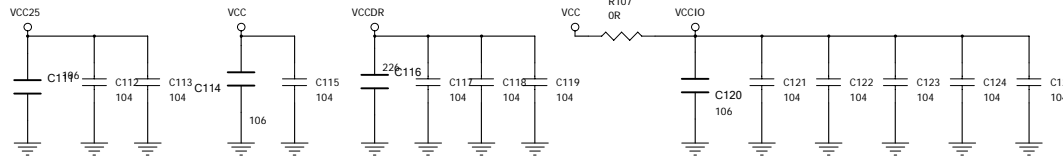
RK2918



RK2918

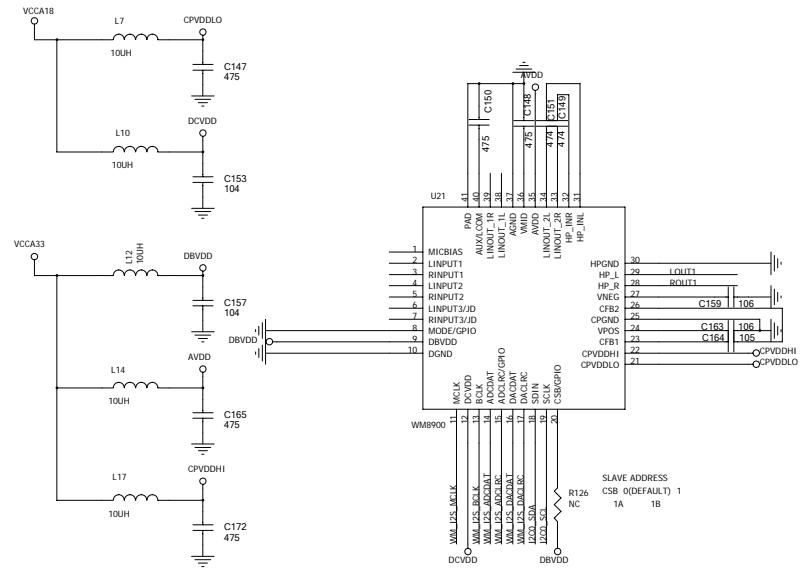


UART DEBUG



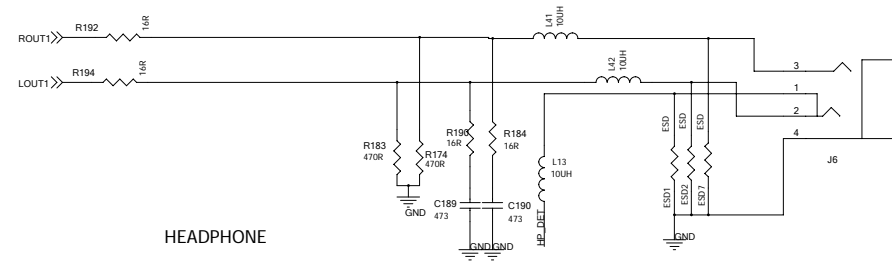
RK2918

易方数码股份有限公司		
Title:	M726HC	
File:	GPIO	REV: 1.3
Create Date:		Page Num: 7
Modify Date:	Tuesday, December 14, 2010	Page Total: 11



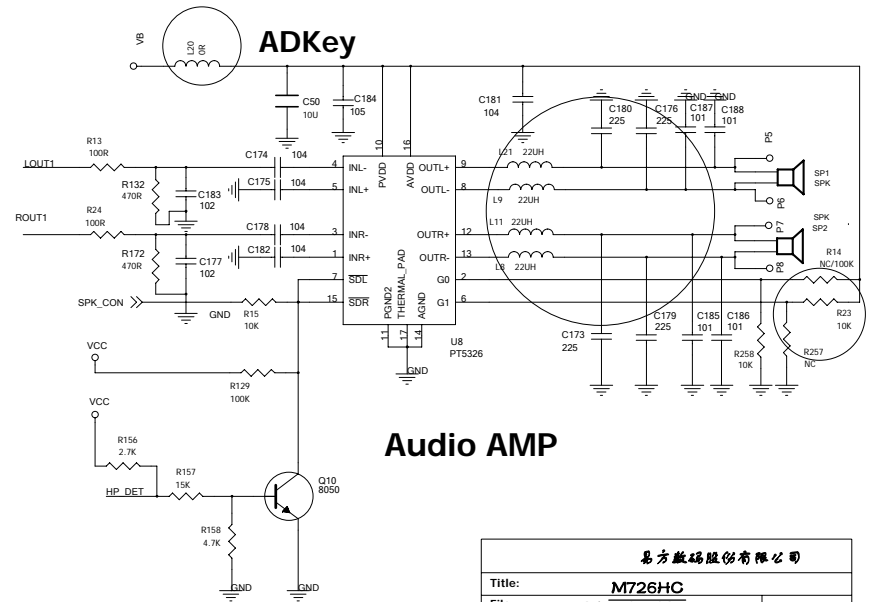
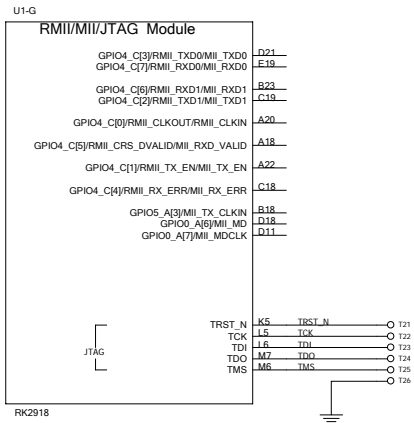
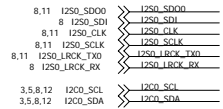
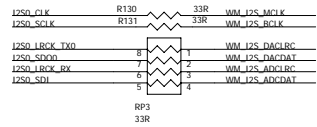
CODEC

Analog TVout



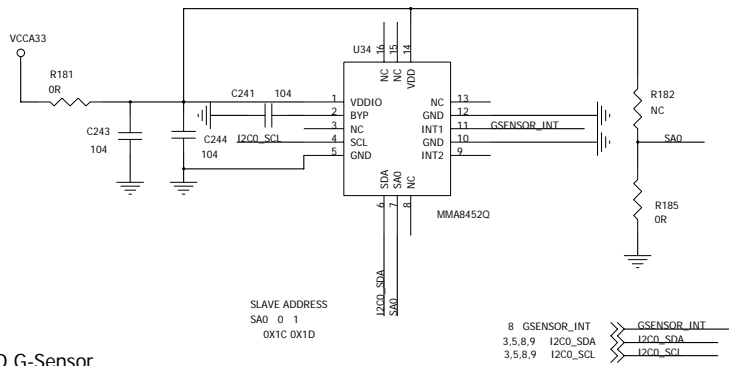
HEADPHONE

MIC

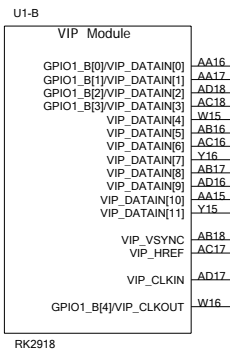


Audio AMP

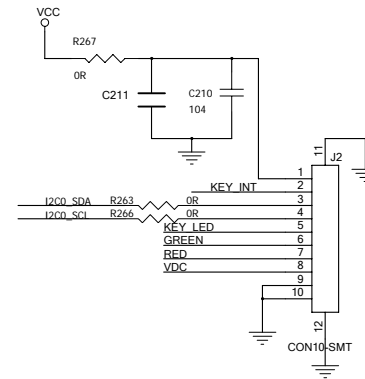
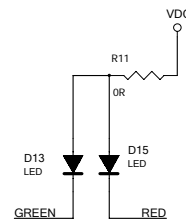
易方微码股份有限公司		
Title:	M726HC	
File:	AUDIO/LP_SENSOR	REV: 1.3
Create Date:	Page Num: 8	
Modify Date: Tuesday, December 14, 2010	Page Total: 11	



3D G-Sensor

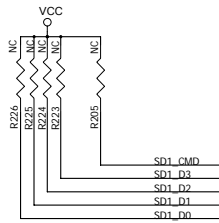


旁路电容C245靠近连接器放置。

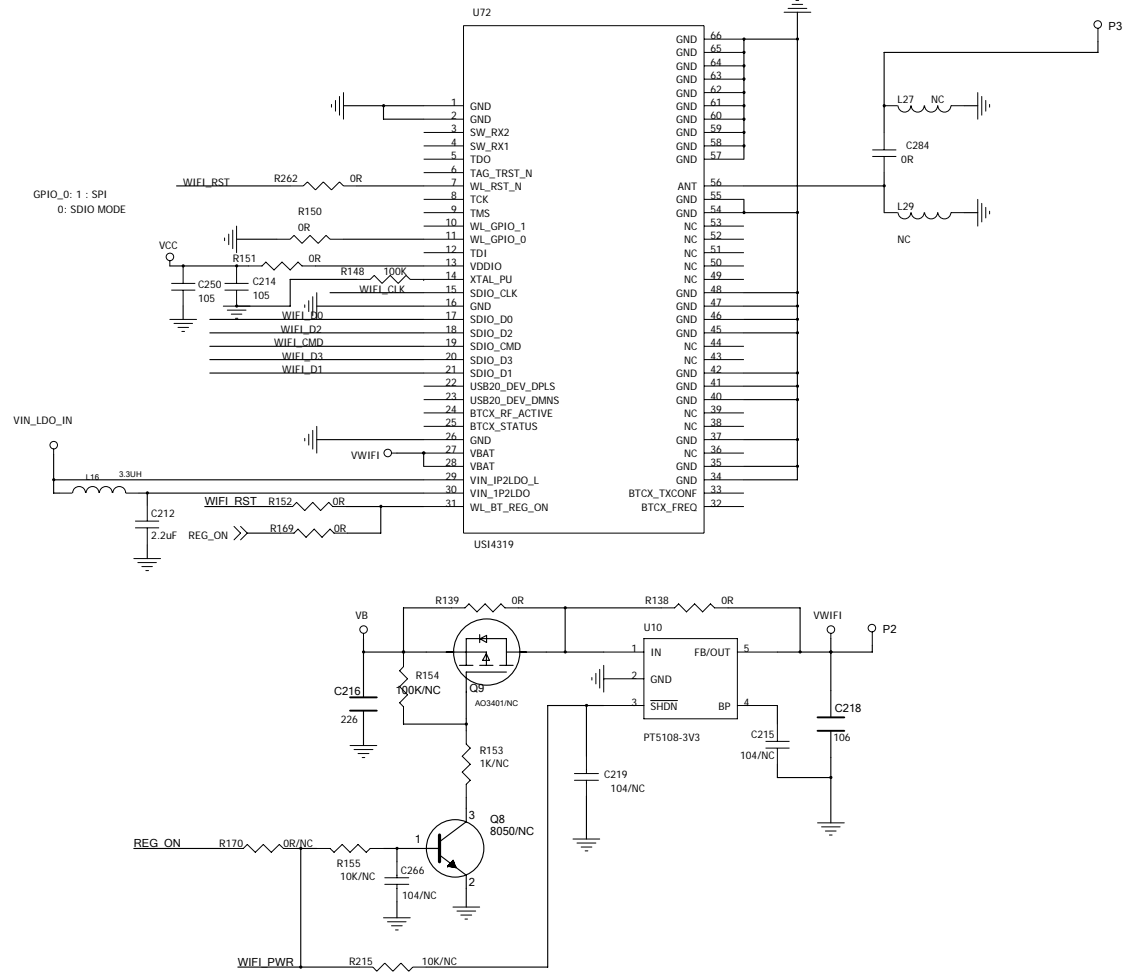


KEY BAORD

易方数码股份有限公司		
Title:	M726HC	
File:	CAMERA/G_SENSOR/KEY/IR	REV: 1.3
Create Date:		Page Num: 10
Modify Date:	Tuesday, December 14, 2010	Page Total: 11



7	SD1_D0	SD1_D0	R222	33R	WiFi_D0
7	SD1_D1	SD1_D1	R221	33R	WiFi_D1
7	SD1_D2	SD1_D2	R220	33R	WiFi_D2
7	SD1_D3	SD1_D3	R219	33R	WiFi_D3
7	SD1_CMD	SD1_CMD	R206	33R	WiFi_CMD
7	SD1_CLK	SD1_CLK	R207	33R	WiFi_CLK



WiFi+BT

易方数码股份有限公司		
Title:	M726HC	
File:	3G/WIFI	
REV: 1.3		
Create Date:	Page Num: 11	
Modify Date: Tuesday, December 14, 2010	Page Total: 11	