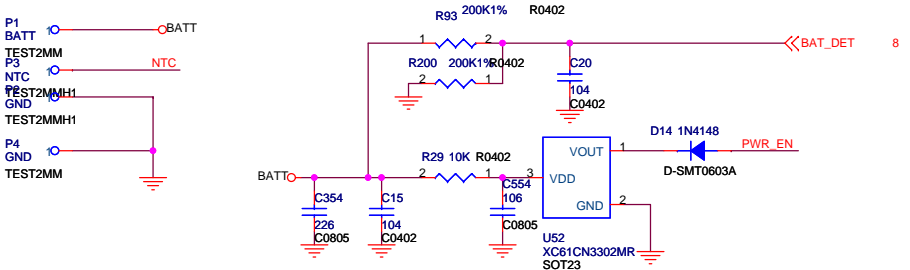
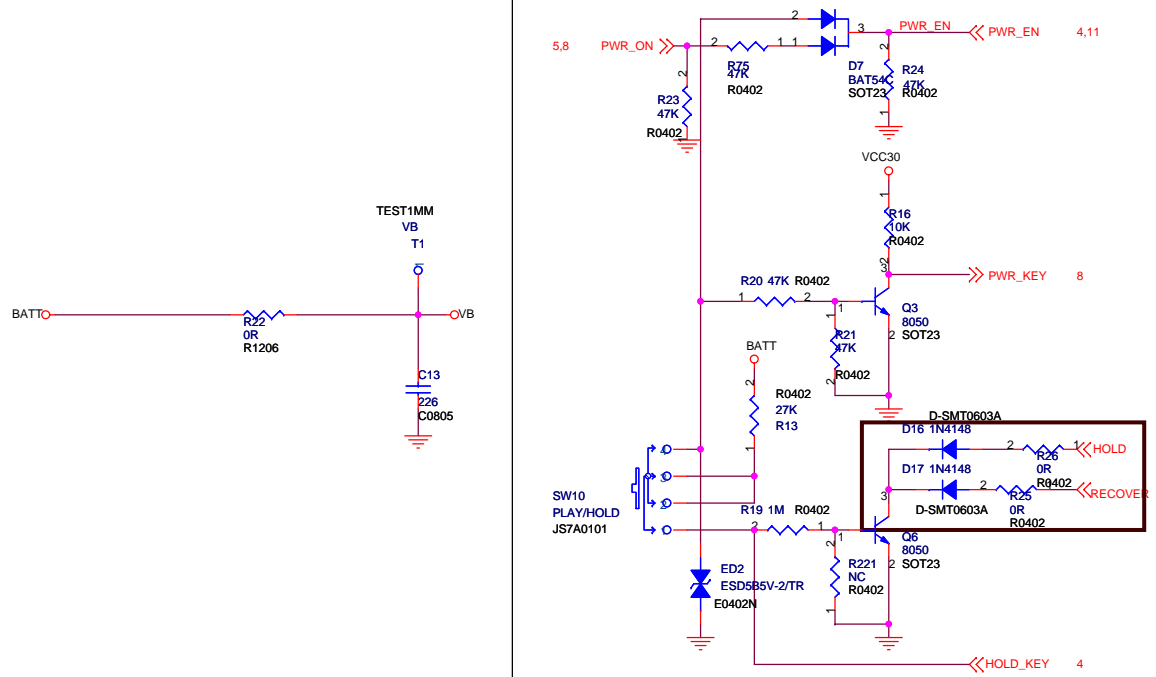
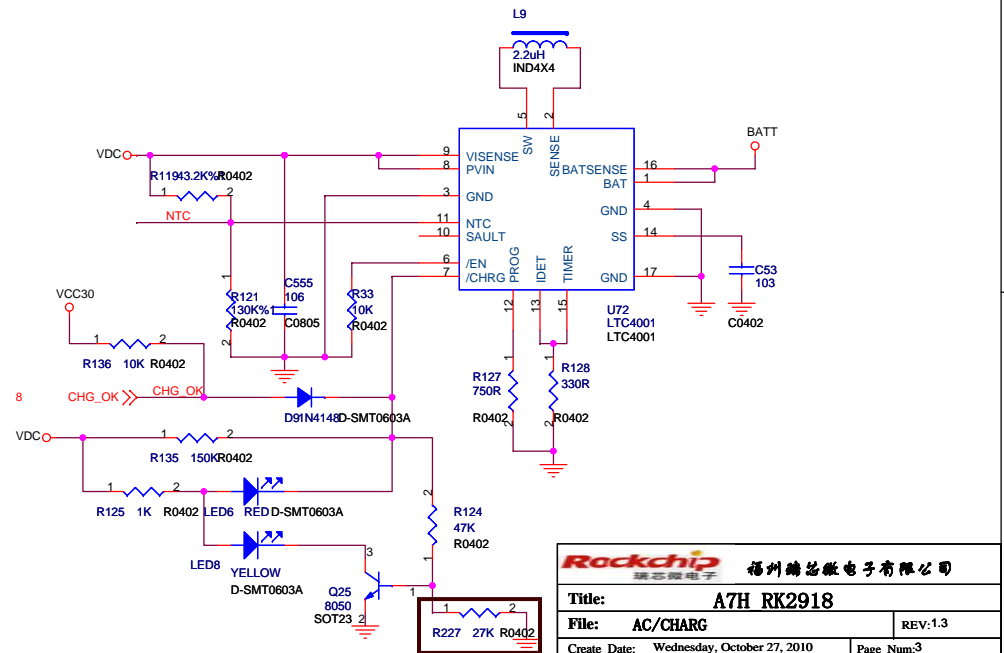


Note:
The battery pack must have a fuel gauge and a 10K NTC.
IF no fuel gauge , Please paste the resistance of
the battery voltage detection.

POWER CONTROL



BATTER DET



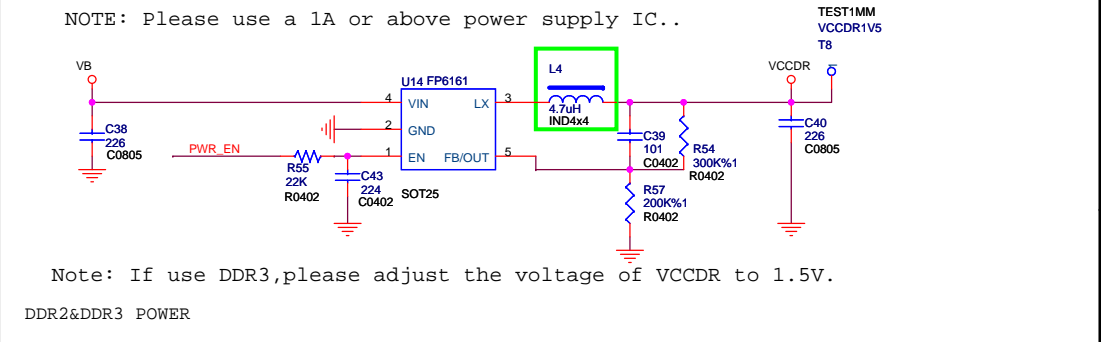
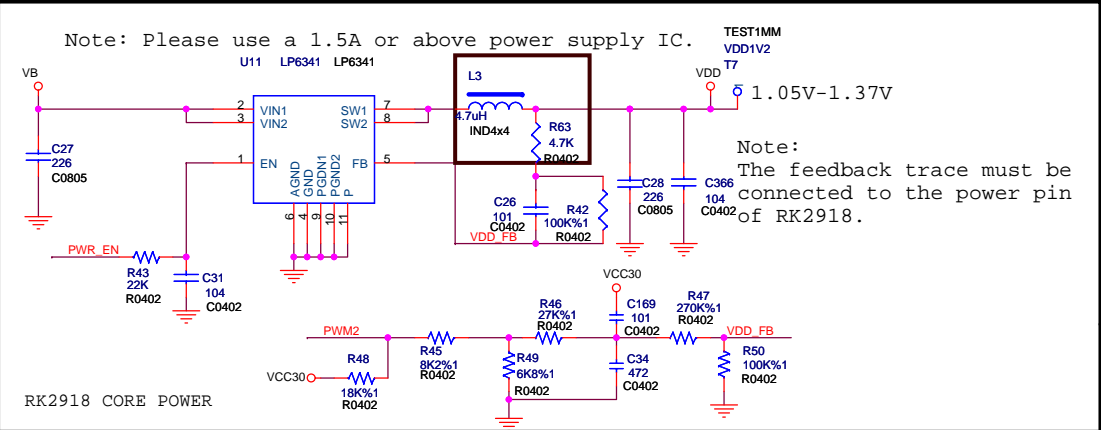
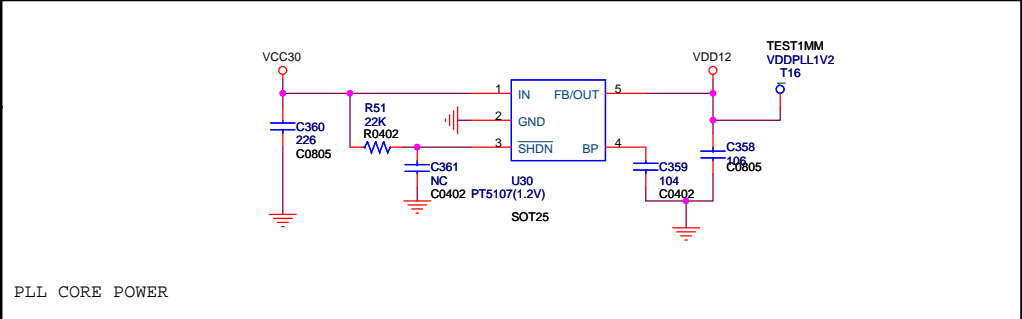
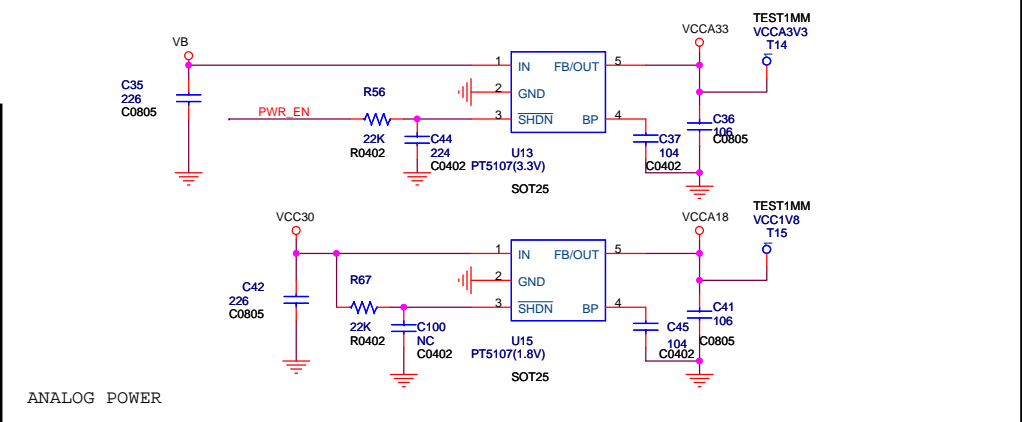
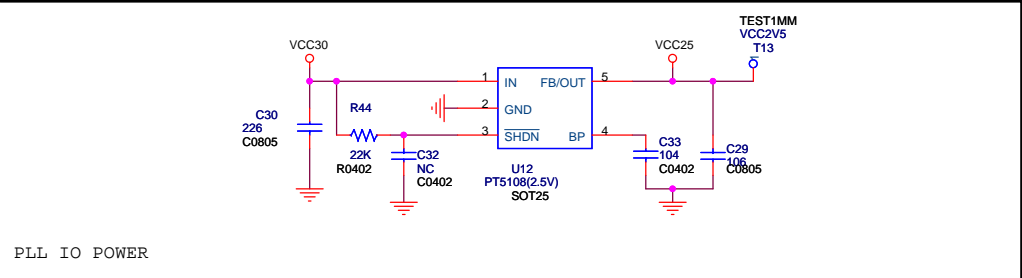
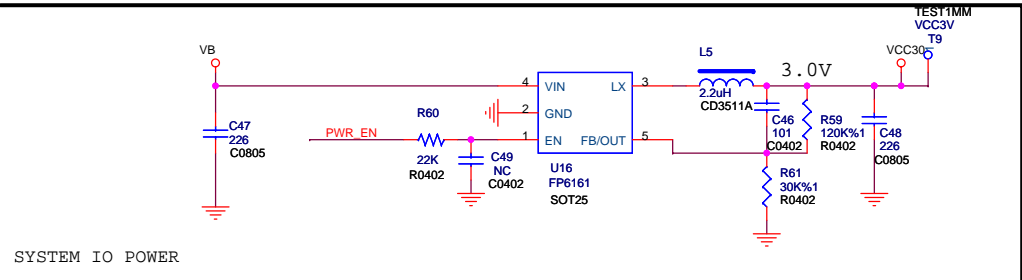
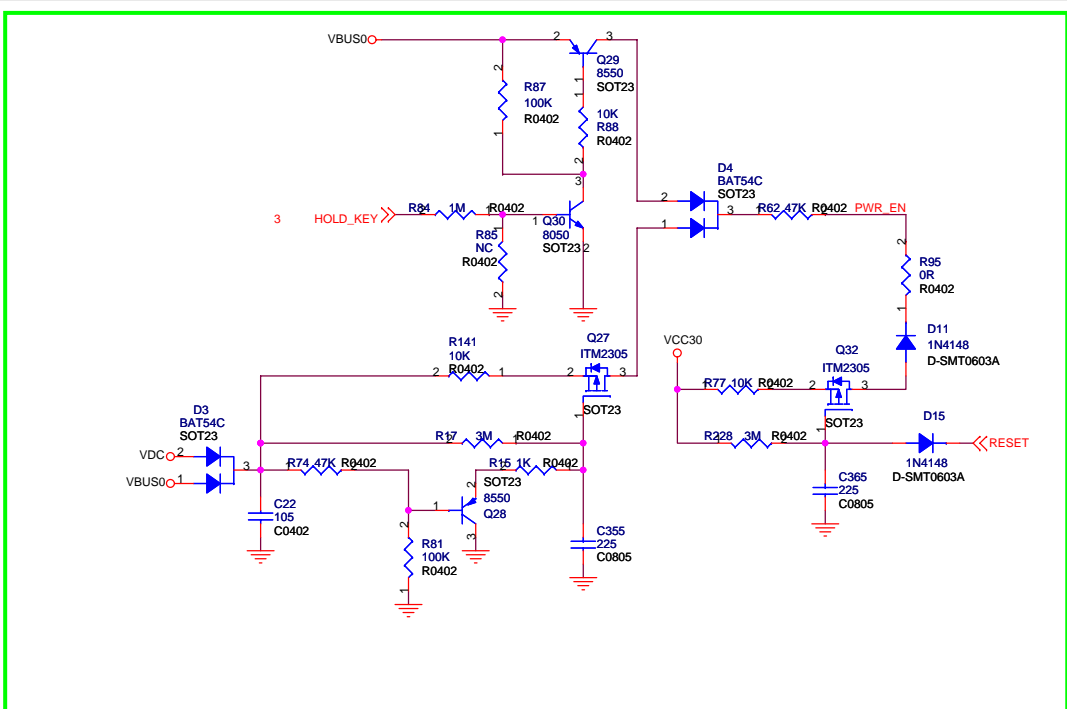
Rockchip 瑞芯微电子 福州瑞芯微电子有限公司

Title: **A7H RK2918**

File: **AC/CHRG** REV:1.3

Create Date: **Wednesday, October 27, 2010** Page Num:3

Modify Date: **Thursday, May 12, 2011** Page Total:12



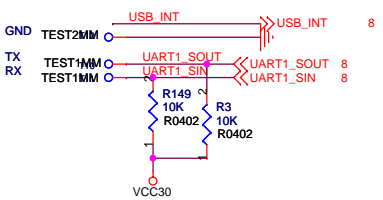
Rockchip 福州瑞芯微电子股份有限公司

Title: **A7H RK2918**

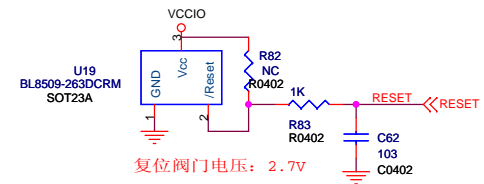
File: **SYSTEM POWER** REV: 1.3

Create Date: Wednesday, October 13, 2010 Page Num: 4

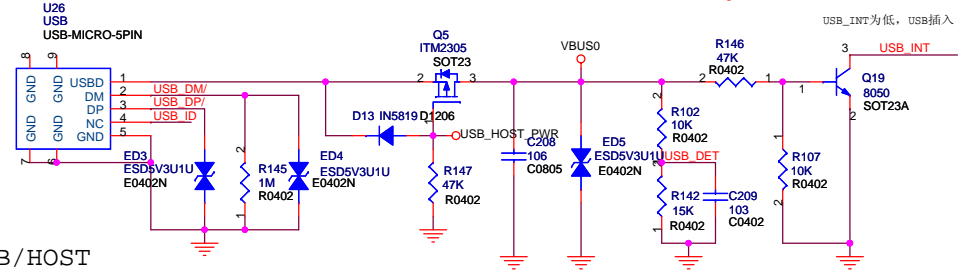
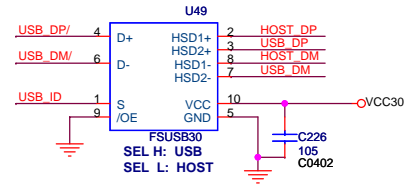
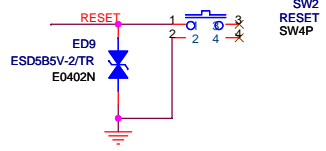
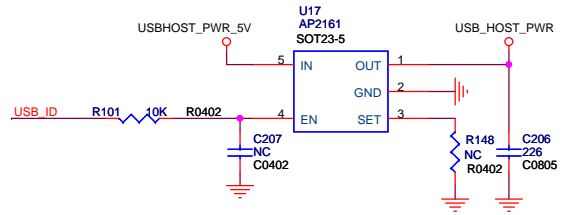
Modify Date: Thursday, May 12, 2011 Page Total: 12



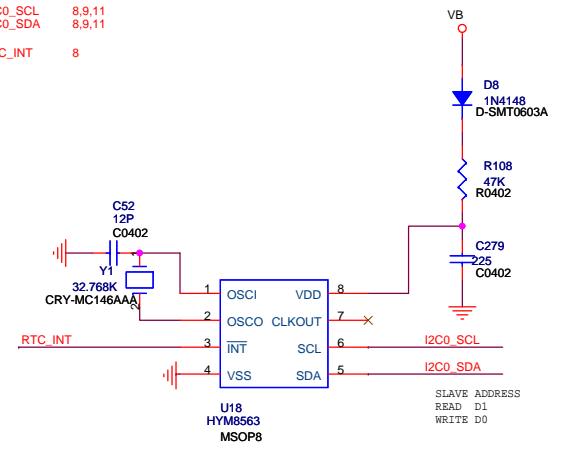
Note: The reset time must be more than 200ms.



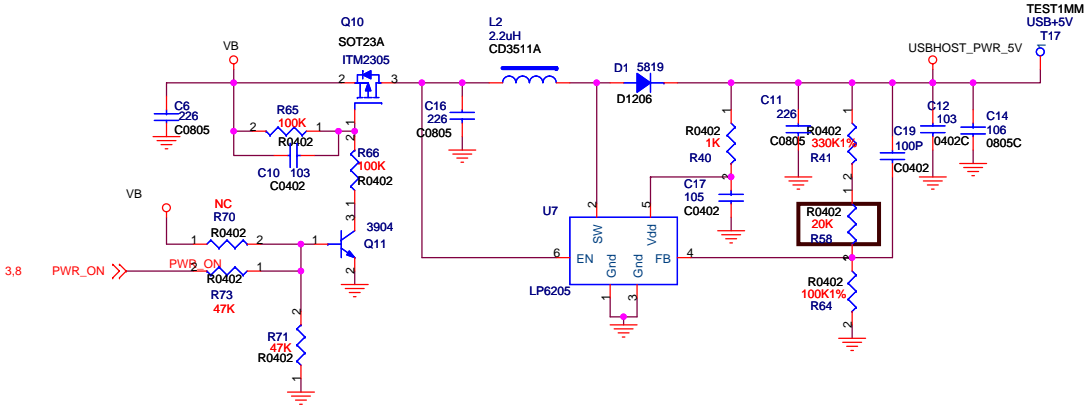
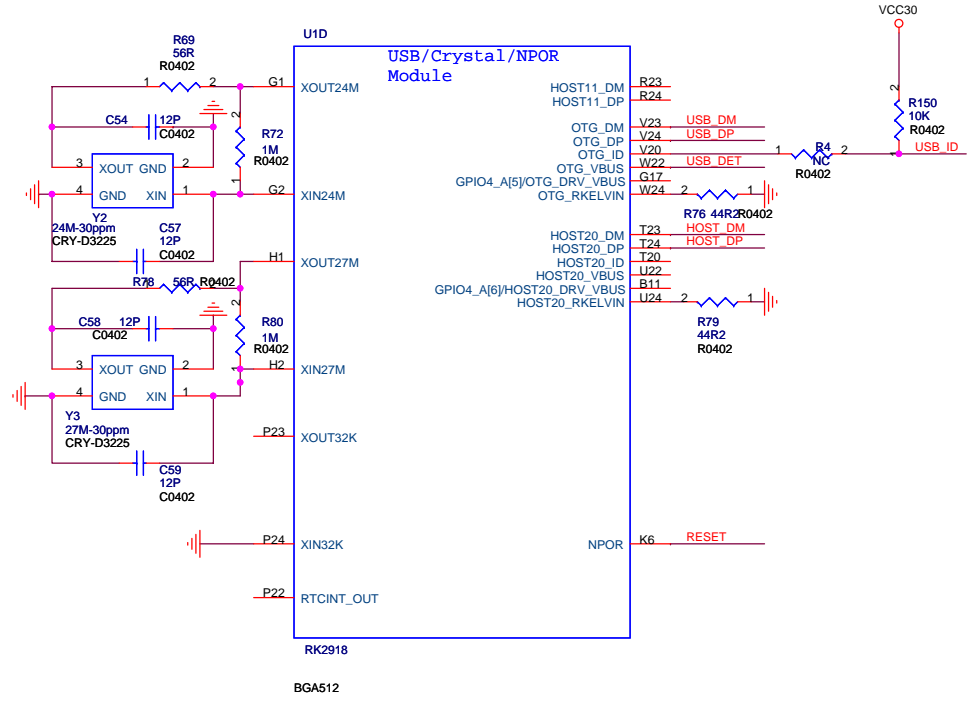
复位阀门电压: 2.7V



USB/HOST



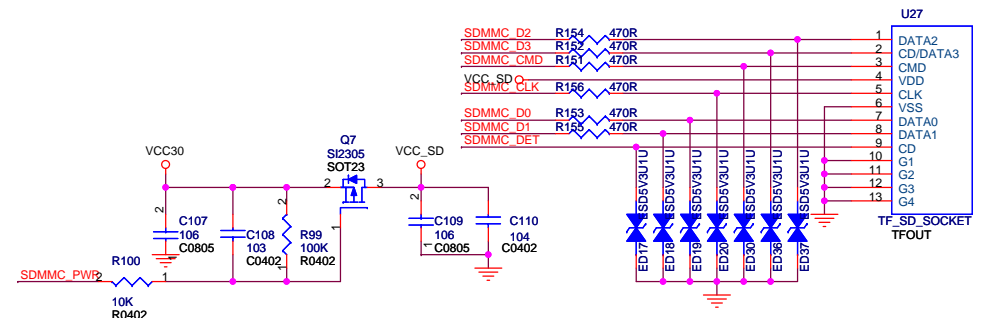
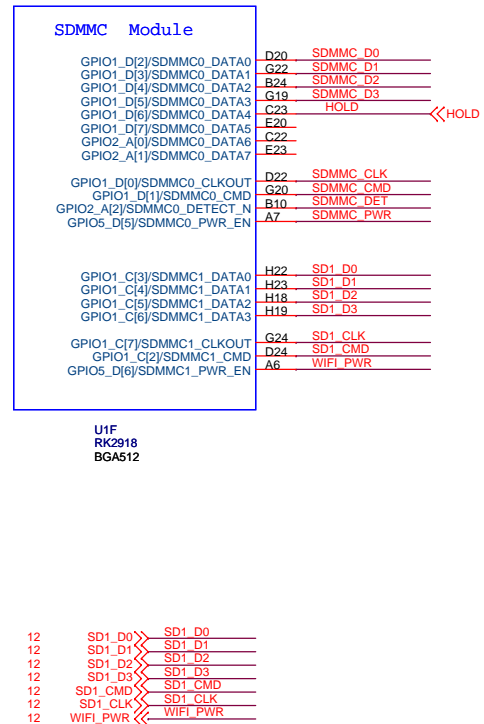
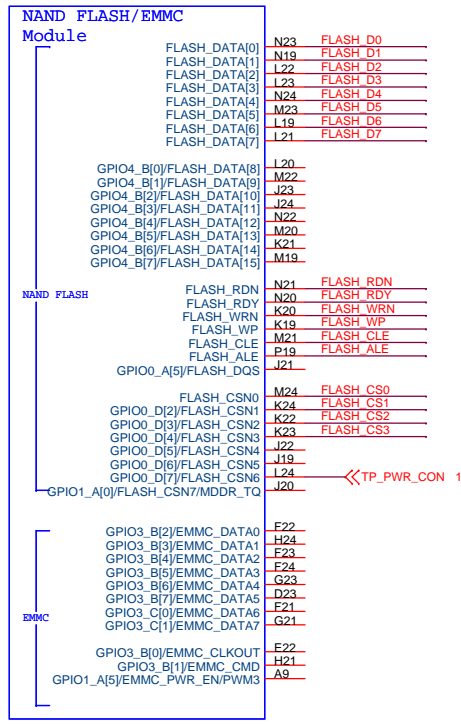
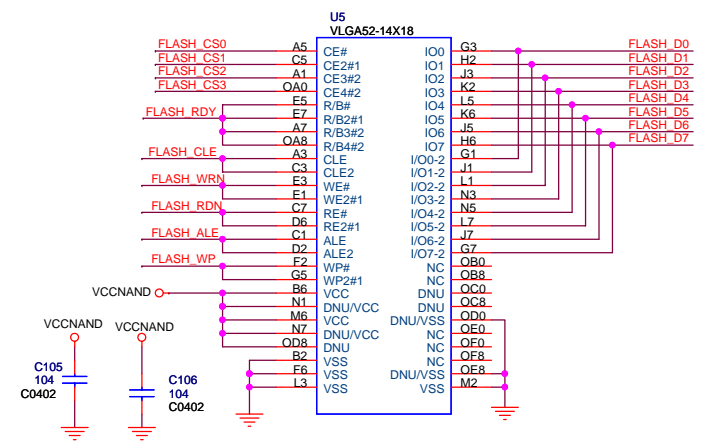
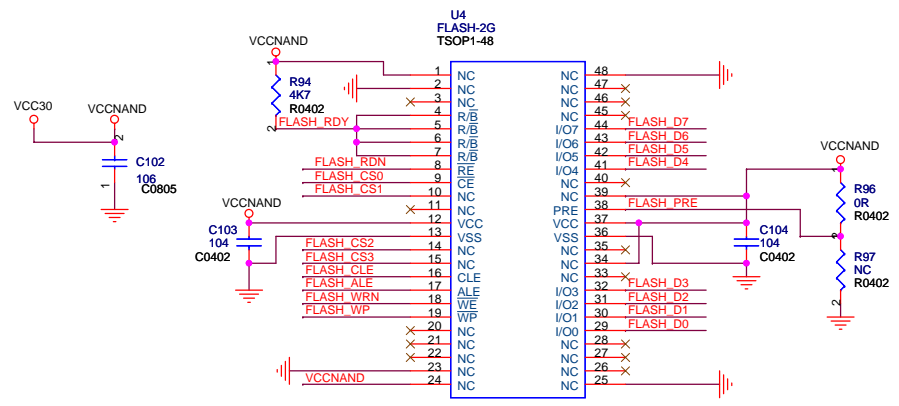
RTC



RK2918-D

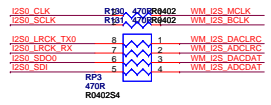
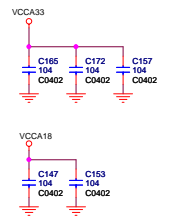
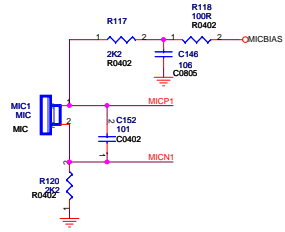
Rockchip 福州瑞芯微电子股份有限公司	
Title: A7H RK2918	
File: USB_HOST/RTC/VIB	REV:1.3
Create Date: Wednesday, October 13, 2010	Page Num: 5
Modify Date: Thursday, May 12, 2011	Page Total: 12

THE 1st FLASH

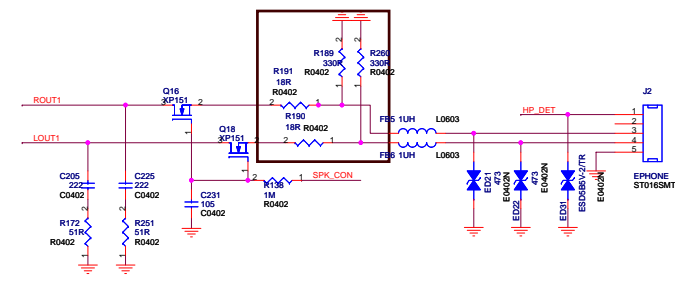
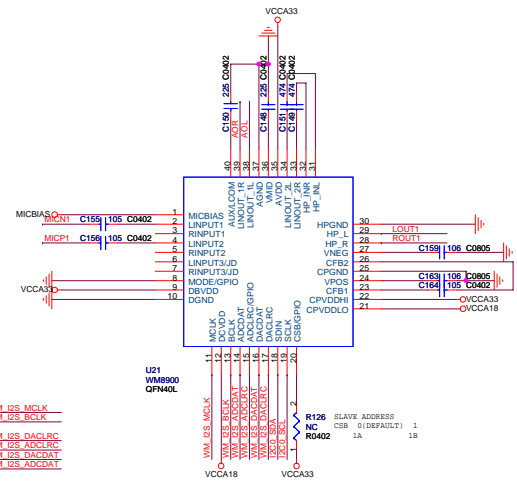


RK2918-E

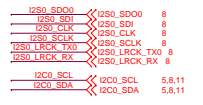
RK2918-F



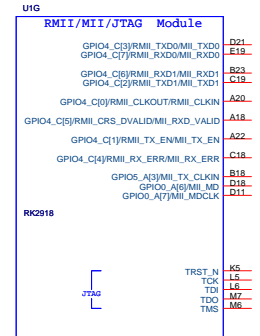
MIC CODEC



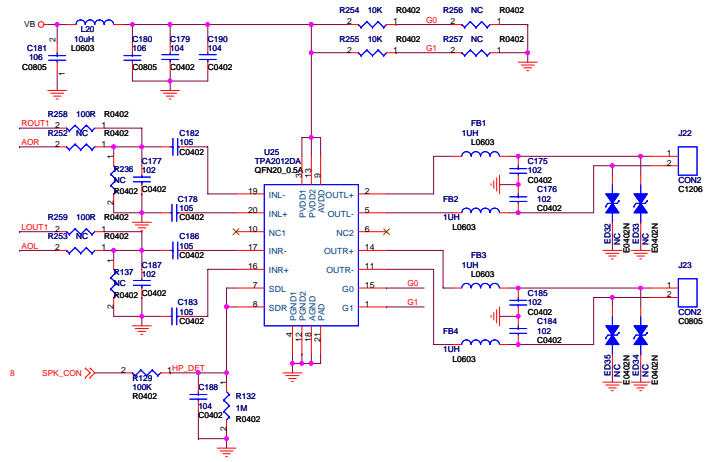
Note: Please place these 4 components as close to CODEC as possible.



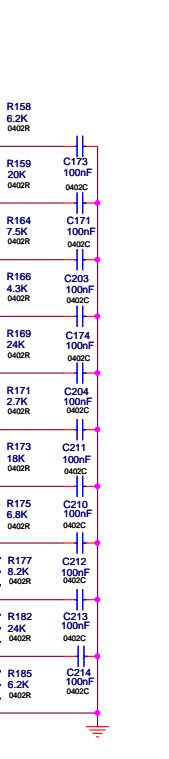
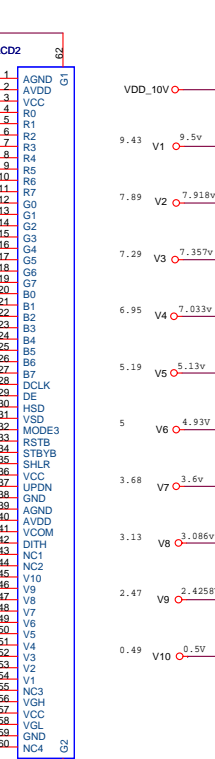
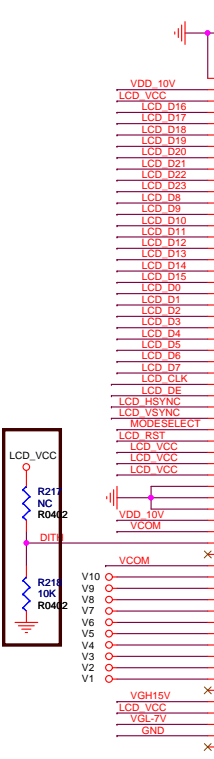
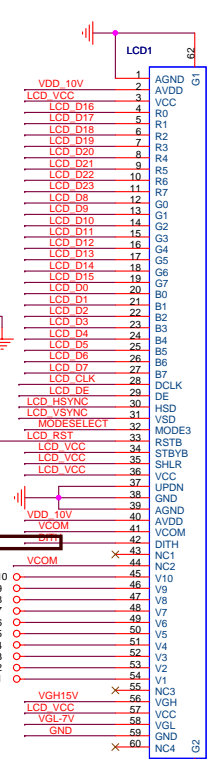
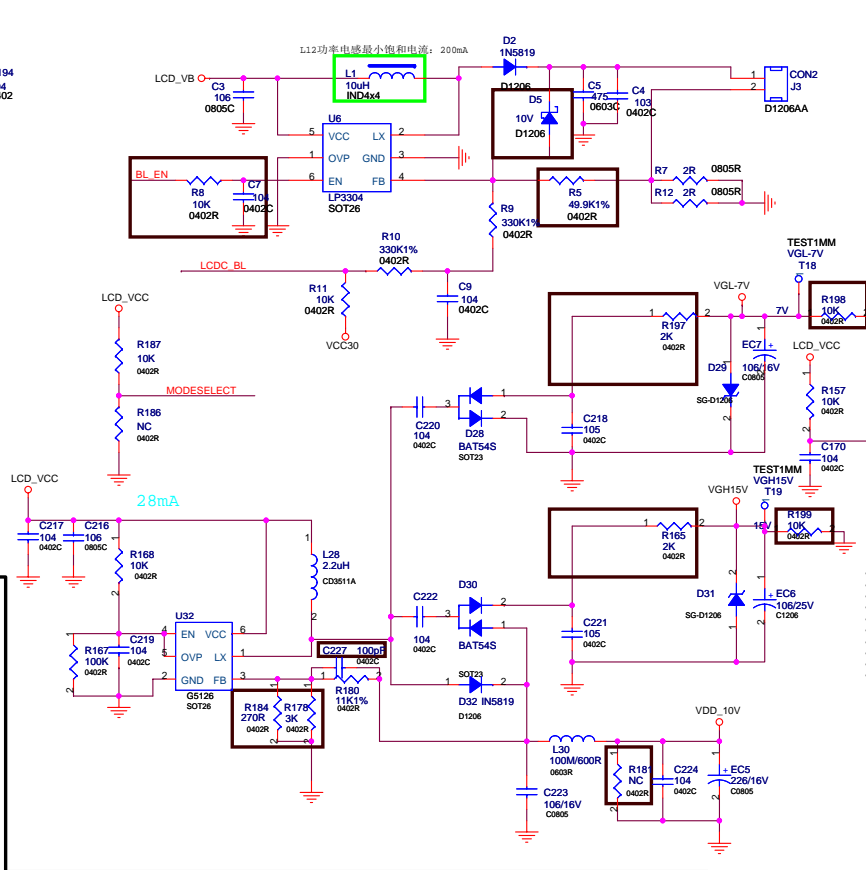
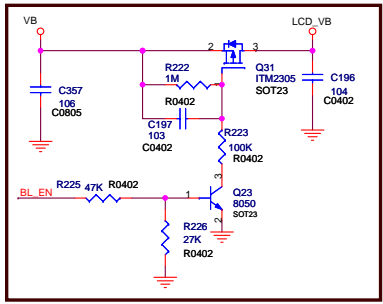
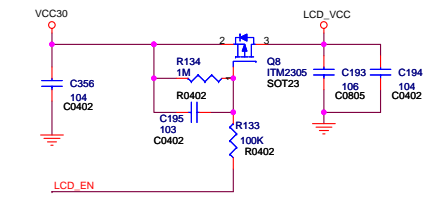
HEADPHONE



BGA512 RK2918-G



Audio AMP



U1A LCDC Module

LCDC_BYP	R6
LCDC_DCLK/EBC_SDCLK	AA12 LCDC_CLK
LCDC_DEN/EBC_GDCLK	Y14 LCDC_DE
LCDC_HSYNC/EBC_SDLE	W11 LCDC_HSYNC
LCDC_VSYNC/EBC_SDOE	AB13 LCDC_VSYNC
LCDC_DATA[23]/EBC_GDRL	W12 LCDC_D23
LCDC_DATA[22]/EBC_GDSP	W13 LCDC_D22
LCDC_DATA[21]/EBC_GDOE	W14 LCDC_D21
LCDC_DATA[20]/EBC_GDOE	Y13 LCDC_D20
LCDC_DATA[19]/EBC_VCOM	Y11 LCDC_D19
LCDC_DATA[18]/EBC_GDPWR2	Y11 LCDC_D18
LCDC_DATA[17]/EBC_GDPWR1	AD15 LCDC_D17
LCDC_DATA[16]/EBC_VCOM	AC15 LCDC_D16
LCDC_DATA[15]/EBC_BORDER1	AB15 LCDC_D15
LCDC_DATA[14]/EBC_BORDER0	AA14 LCDC_D14
LCDC_DATA[13]/EBC_SDOE5	AC14 LCDC_D13
LCDC_DATA[12]/EBC_SDOE4	AB14 LCDC_D12
LCDC_DATA[11]/EBC_SDOE3	AA13 LCDC_D11
LCDC_DATA[10]/EBC_SDOE2	Y12 LCDC_D10
LCDC_DATA[9]/EBC_SDOE1	AD11 LCDC_D9
LCDC_DATA[8]/EBC_SDOE0	AD11 LCDC_D8
LCDC_DATA[7]/EBC_SDDO[7]	AC13 LCDC_D7
LCDC_DATA[6]/EBC_SDDO[6]	AD12 LCDC_D6
LCDC_DATA[5]/EBC_SDDO[5]	AB11 LCDC_D5
LCDC_DATA[4]/EBC_SDDO[4]	AD11 LCDC_D4
LCDC_DATA[3]/EBC_SDDO[3]	AB13 LCDC_D3
LCDC_DATA[2]/EBC_SDDO[2]	AC12 LCDC_D2
LCDC_DATA[1]/EBC_SDDO[1]	AC11 LCDC_D1
LCDC_DATA[0]/EBC_SDDO[0]	W10 LCDC_D0

NOTE: Please play this resistor close to node!

LCDC_D2	R176	470R	LCDC_D2
LCDC_D3	R144	470R	LCDC_D3
LCDC_D4	R0402	4	LCDC_D4
LCDC_D5	R0402	3	LCDC_D5
LCDC_D6	470R	2	LCDC_D6
LCDC_D7	RP4	1	LCDC_D7
LCDC_D8	R0402	4	LCDC_D8
LCDC_D9	R0402	3	LCDC_D9
LCDC_D10	R0402	3	LCDC_D10
LCDC_D11	R0402	3	LCDC_D11
LCDC_D12	470R	3	LCDC_D12
LCDC_D13	RP6	1	LCDC_D13
LCDC_D14	R0402	3	LCDC_D14
LCDC_D15	RP7	2	LCDC_D15
LCDC_D16	470R	3	LCDC_D16
LCDC_D17	R0402	4	LCDC_D17
LCDC_D18	R0402	4	LCDC_D18
LCDC_D19	R0402	4	LCDC_D19
LCDC_D20	R0402	4	LCDC_D20
LCDC_D21	R0402	3	LCDC_D21
LCDC_D22	470R	2	LCDC_D22
LCDC_D23	RP8	1	LCDC_D23

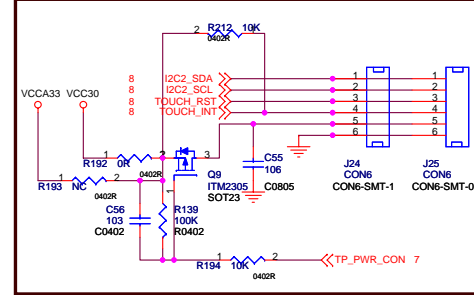
note3

LCDC_D0	R209	470R	LCDC_D0
LCDC_D1	R208	470R	LCDC_D1
LCDC_D8	R210	470R	LCDC_D8
LCDC_D9	R211	470R	LCDC_D9
LCDC_D16	R223	470R	LCDC_D16
LCDC_D17	R219	470R	LCDC_D17



Correspondence between LCDC DATA and RGB

LCDC_D0	B0	LCDC_D12	G4
LCDC_D1	B1	LCDC_D13	G5
LCDC_D2	B2	LCDC_D14	G6
LCDC_D3	B3	LCDC_D15	G7
LCDC_D4	B4	LCDC_D16	R0
LCDC_D5	B5	LCDC_D17	R1
LCDC_D6	B6	LCDC_D18	R2
LCDC_D7	B7	LCDC_D19	R3
LCDC_D8	G0	LCDC_D20	R4
LCDC_D9	G1	LCDC_D21	R5
LCDC_D10	G2	LCDC_D22	R6
LCDC_D11	G3	LCDC_D23	R7



Rockchip 福州瑞芯微电子股份有限公司

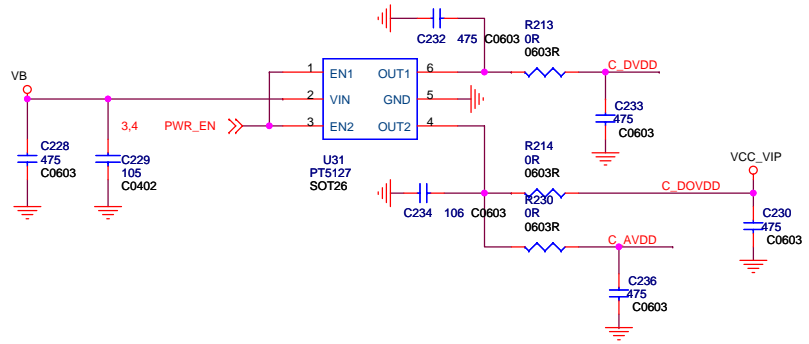
Title: **A7H_RK2918**

File: **LCD** REV: 1.3

Create Date: Friday, October 15, 2010 Page Num: 10

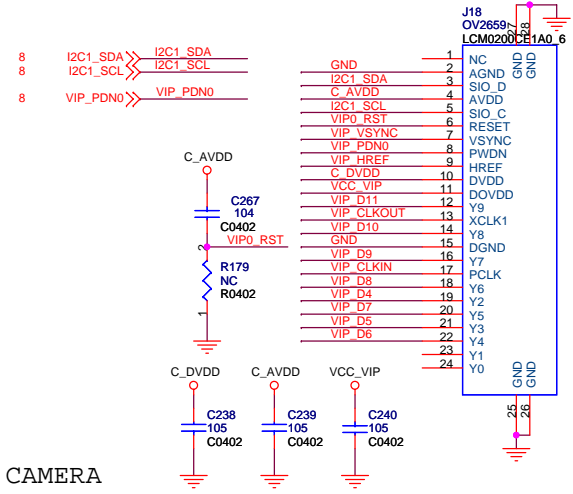
Modify Date: Thursday, May 12, 2011 Page Total: 12

RK2918-A

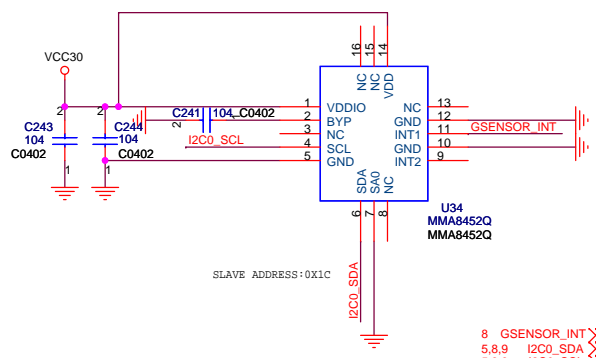


Note: If using other sensor modules, follow to the requirements of SPEC on the power supply.

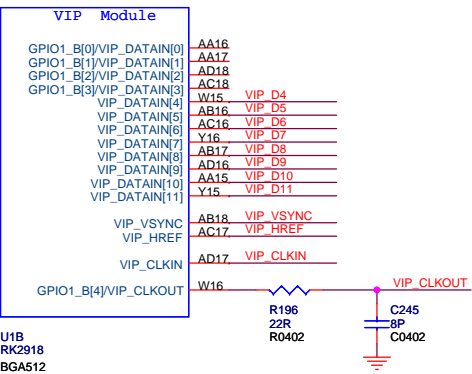
CAMERA POWER



CAMERA



3D G-Sensor



RK2918-B

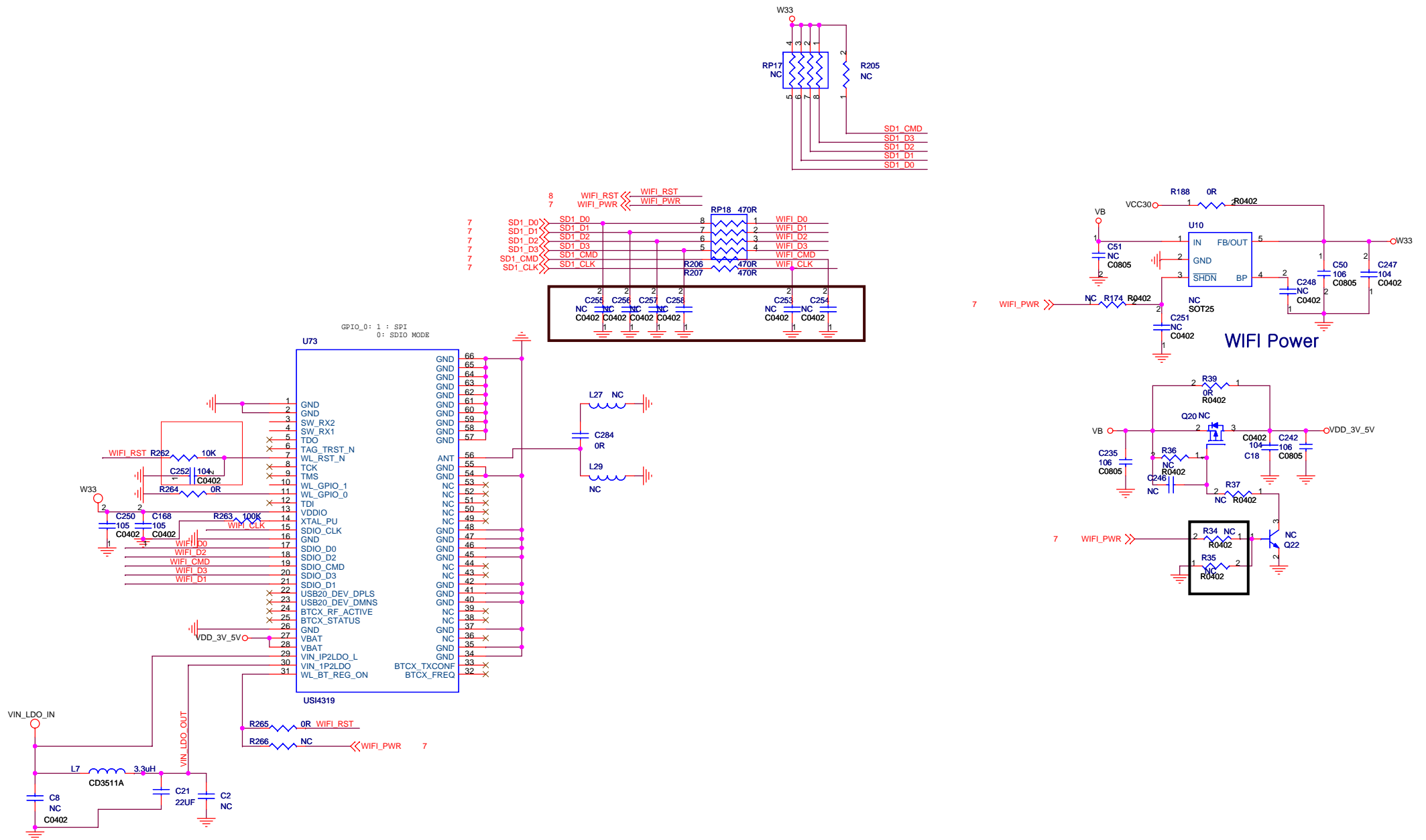
Rockchip 福州瑞芯微电子股份有限公司

Title: **A7H RK2918**

File: **CAMERA/G_SENSOR/KEY/IR/COMP** REV:1.3

Create Date: Friday, October 15, 2010 Page Num: 11

Modify Date: Thursday, May 12, 2011 Page Total: 12



Note (For more suggestions, please refer to the SPEC of the wireless IC):

- 1.RF traces need 50R impedance .
- 2.Wireless`s components need to add some magnetic shield, the whole other devices also require rigorous screening. (Such as DDR and master, diverted to the outer shielding shell alignment inner need to go out after the series resistor to reduce interference.)
- 3.Wireless`s antenna must be as far from other devices as possible and have a clearance zone around the antenna.
- 4.Wireless`s antenna must be select a large area material, and placed on the top of the board, and try to rely on the same layer.
- 5.Under of RF alignment do not have any power traces or any data traces .

Rockchip 福州瑞芯微电子股份有限公司	
Title: A7H RK2918	
File: 3G/WIFI	REV: 1.3
Create Date: Friday, October 15, 2010	Page Num: 12
Modify Date: Thursday, May 12, 2011	Page Total: 12