
Cautions

1. Do not subject the device to severe impact or drop it from high position.
2. Do not use the player in extreme hot or cold, dusty or damp field. Do not expose it to direct sunshine.
3. Back up the data frequently in case of accident data loss.
4. Avoid using the player in strong magnetic field.
5. Keep the device away from water or other liquids. In the event that water or other liquids enter the device, power off the product immediately, take out the battery and clean the device.
6. Do not use chemical solution to clean the device in order to avoid corrosion. Clean it with a dry cloth.
7. We are not responsible for the damages or lost data caused by malfunction, misusing, repairing the device or battery replacement.
8. Do not attempt to disassemble, repair or modify the product, or it will be out of guarantee.
9. The design of the player or actual display may be different from what is shown in this manual. It should be subject to the actual display or design.

FCC NOTICE

- 1. This device complies with Part 15 of the FCC Rules.
Operation is subject to the following two conditions:**
 - (1) This device may not cause harmful interference, and**
 - (2) This device must accept any interference received, including interference that may cause undesired operation.**
- 2. Changes or modifications not expressly approved by the party responsible for compliance could void the user's authority to operate the equipment.**

1 Key Features

MP3&WMA Playback

Play audio files in the format of MP3 or WMA.

Navigation Function

You can use the navigation function to search for and play the specified folder or track.

Voice Recording

Record voice as WAV file and playback the recorded content in excellent audio quality.

FM Transmitter

Transmit the audio signal from the MP3 player to the FM radio. You can receive the audio signal through the FM radio.

Removable Storage Device

Provides high-speed USB interface for you to copy files from or to the player.

Lyric Display

Display lyric of the current track during playback.

2 System Requirements

- ✦ Hardware: IBM PC & Compatible PC, Notebook with USB interface
- ✦ Operating System: Windows98/SE, Windows Me, Windows2000/XP

3 Package Content

Please check the package for the following items. If any one of them is missing, please contact the vendor:

- ✦ Main Unit
- ✦ Stereo earphone
- ✦ USB cable
- ✦ Neck Strap
- ✦ AAA –size Alkaline Battery
- ✦ User Manual
- ✦ Driver CD

4 Before Using

4.1 Connect to the PC and download audio files

For Windows 98/SE, you are required to install the included driver before connection. For detail information about driver installation, see the “Driver Installation” section.

The MP3 player is a plug & play device under WIN2000/XP/ME OS. You don't need to install the driver. Just connect the player to the PC and download audio files following these steps:


- (1) Plug the larger end of the USB cable to the USB port of the PC, and plug the smaller

end to the USB port of the player.

- (2) Double click "My Computer" on the desktop, you see a removable disk which represents the player. Just copy the files from the PC to the removable disk.

4.2 Removing the player from the PC safely

For Windows2000/XP:

- (1) Left click the  icon at the right hand corner of the taskbar.
- (2) Click the pop-up mini-window with message of "Stop the USB Mass Storage Device – Drive (X)".
- (3) When you see the following prompt, pull out the MP3 player.



For Win98, please make sure the data transfer is completed before unplugging the MP3 player.

4.3 Installing Battery

- (1) Press on the battery cover and slide it off in the direction of the arrow.
- (2) Insert one AAA - size battery.
- (3) Close the battery cover.



5 LCD Indication



Remark: ID3 Information includes track title, artist, album, lyric etc.

6 Basic Operations

Function	Operation
Power On/Off	Press and hold the ▶ key until you see prompt on the display.
Play	Press the ▶ key to play track.
Pause	During playback, press the ▶ key to pause.
Stop	During playback, press and hold the ▶ for a while to stop the playback and return to the beginning of current track.
Adjust Volume	Press the V+ key to increase the volume. Press the V- key to decrease the volume.
Play the previous track	Turn the Control Wheel leftwards.
Play the next track	Turn the Control Wheel rightwards.
Fast Forward	Turn the Control Wheel to the right and hold it.

Rewind	Turn the Control Wheel to the left and hold it.
Lock/Unlock keys	Push the  switch to the locked position to lock keys against being pressed accidentally. Push the  switch to the unlocked position to enable all keys.
Select Mode	Music Mode – Press and hold the Control Wheel key to enter the main menu, select “Music” by turning the Control Wheel and then press the Control Wheel confirm. Voice Mode – Press and hold the Control Wheel to enter the main menu, select “Voice” by turning the Control Wheel and then press the Control Wheel to confirm.

7 Advanced Features

+ Using the Menu

Press and hold the **Control Wheel** to enter the main menu.

Turn the **Control Wheel** leftwards or rightwards to select the menu item and press the **Control Wheel** to confirm the selected item.

Press the **▶||** key to return to the previous menu level. Or, do not press any key it will return automatically in a few seconds.

To exit from the menu mode, on the main menu, select “Return” and press the **Control Wheel** to confirm. Or, do not press any key, it will exit automatically in a few seconds.

+ Using the Navigation Function

In the music or voice mode, press and hold the **Control Wheel** to enter the main menu, select the “Folder” item and press the **Control Wheel** to enter the folder navigation mode.

To navigate through the folders:

- (1) Turn the **Control Wheel** leftwards or rightwards to select folder.
- (2) Press the **Control Wheel** to enter the selected folder.
- (3) Turn the **Control Wheel** to select track that you want to play.
- (4) Press the **▶||** key to play the selected track.
- (5) Press the **Control Wheel** to close the current folder. When you reach the root directory, you can press the **▶||** key to exit from the navigation mode and return to the main menu.

To delete folder or track:

- (1) In the navigation mode, select the folder or track that you want to delete.
- (2) Press the **A-B** key to delete it.
- (3) Turn the **Control Wheel** to select the “Yes” option and press the **A-B** key again to confirm deletion.

Note: You can only delete empty folder.

+ A-B Repeat

To repeat specified section of the current track,

-
- (1) Press the **A-B** key during playback to select the start point of the repeat. At the top of the LCD screen shows "A-".
 - (2) Press the **A-B** key again at the desired point to specify the end point of the repeat. At the top of the screen, " A-B " displays instead. The section between the start point and the end point begins to be played repeatedly.
 - (3) Press the **A-B** key shortly to stop A-B repeat.

✦ **Select Play Mode**

You can switch between the following five play modes:

Normal –Play all tracks in order and stop after playing all

Repeat One –Keep repeating the current track

Repeat All –Play all tracks in order and repeat

Shuffle –Play all tracks randomly and stop after playing all

Rep Shuffle –Keep repeating all tracks randomly

To select the play mode:

- (1) In the Music or Voice mode, press **Control Wheel** shortly to show the submenus.
- (2) Select the "Repeat" item and press the **Control Wheel** to show the provided options.
- (3) Select the desired mode option and press the **Control Wheel** to confirm.

✦ **Switch EQ Mode**

You can play the tracks in different sound effect. The device provides 6 EQ modes: Normal, Rock, Jazz, Classic, Pop and Bass.

To set the EQ mode:

- (1) In the Music or Voice mode, press **Control Wheel** shortly to show the submenus.
- (2) Select the "Equalizer" item and press the **Control Wheel** to show the provided options.
- (3) Select the desired mode option and press the **Control Wheel** to confirm.

✦ **Preview Tracks**

You can preview all tracks on the current play list before listening. In the preview mode, the player plays the first 10 seconds of every track.

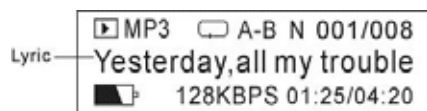
In the Music or Voice mode, press the **Control Wheel** shortly to show the submenus, select "**Preview**" and then press the **Control Wheel** to start preview. To end the preview, press the **Control Wheel** again.

✦ **Delete Single Track**

- (1) In the Music or Voice mode, turn the **Control Wheel** leftwards or rightwards to select the track that you want to delete.
- (2) Press the **Control Wheel** shortly to show the submenus.
- (3) Select the "Delete" item and press the **▶||** key to confirm deletion.

✦ **Display Lyric**

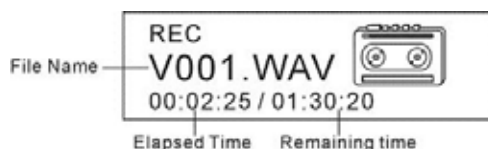
To display the lyric during playback, you need to download a lyric file with the same name as the current track title to the player. The extension name for the lyric file is ".lrc", you can download it from the related website.



8 Voice Recording

+ Record

- (1) In the Music or Voice mode, press and hold the **A-B** key for a few seconds until you see the following recording screen.



- (2) Speak into the built-in microphone.
- (3) To stop recording, press the **A-B** key again. A voice file named as V00Y.WAV (where Y is the sequence number) is created. Now, you can press the **▶||** key to play the voice file that you just recorded.

+ Play Voice File

- (1) On the main menu, select the "Voice" item to enter the Voice mode.
- (2) Select the file that you want to play and press the **▶||** key to play it.

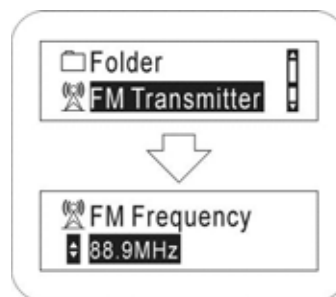
Alternatively, you can enter the navigation mode, open the Voice folder and select the voice file that you want play.

9 FM Transmitter

FM transmitter enables you to transmit the audio signal from the MP3 player to the optional FM radio. You can use the FM radio to tune in the audio files being played on the MP3 player.

Usage:

- (1) On the main menu, select the "FM Transmit" item and press the **Control Wheel** to confirm.
- (2) Turn the **Control Wheel** to select the FM frequency that receives the transmitted audio signal.
- (3) Open the FM radio and tune to the frequency that you set in the step (2) above. Then you can listen in the music being played on the MP3 player.



10 Customizing Settings

On the main menu, select the "Settings" item and press the **▶||** key to enter the system settings mode.

+ Set backlight time

On the main menu, select "Backlight" and press the **Control Wheel** to confirm.

Select among the four options: **5 Secs**, **10 Secs**, **Always on**, **Disable** by turning the **Control Wheel** and then press the **Control Wheel** to confirm your selection.

According to this setting, when you press any key, the backlight will be on for the set time.

✦ **LCD Contrast setting**

- (1) In the "Settings" menu, select "Contrast" and press the **Control Wheel** to confirm.
- (2) Turn the **Control Wheel** to adjust the contrast level and then press the **Control Wheel** to confirm your settings.

✦ **Set the standby time**

On the main menu, select "Shutdown" and press the **Control Wheel** to confirm. Select one option from "1 Mins", "2 Mins", "5 Mins", "10 Mins" and "Disable" and then press the **Control Wheel** to confirm your selection. According to this setting, the player will be turned off automatically when it is idle for selected time.

✦ **Set the timer**

On the main menu, select "Play Time" and press the **Control Wheel** to confirm. Select one option from "30mins", "60mins", "90mins", "120mins" and "Always On", and then press the **Control Wheel** to confirm your selection. According to this setting, the player will be turned off automatically when the set playing time is elapsed.

✦ **View memory state**

In the "Setting" menu, turn the **Control Wheel** to select "Memory", and then press the **Control Wheel** see total capacity and free space of the internal memory.

✦ **Set Display Language**

On the "Setting" menu, select "Language" and press the **Control Wheel** to confirm. Select one language by turning the **Control Wheel** and then press the **Control Wheel** to confirm your selection.

11 Driver Installation

For Windows 98/SE, you are required to install the driver first before connecting it to the computer.

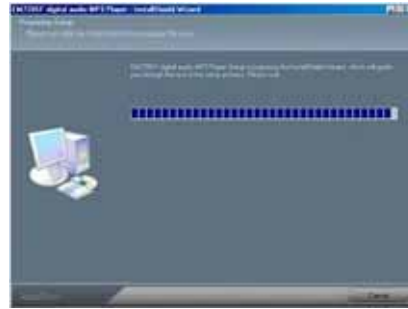
- (1) Insert the driver CD into the CD-ROM and execute the Setup.htm file on it. Click the player picture with correct model on the following pane.
- (2) Select "Run this program from its current location" in order to execute Setup.exe program at once, and then click "OK" to continue.



- (3) Click "Yes" on the following dialogue to start installation.
- (4) The installation progress starts.



(5) Click "Next" to continue.



(6) Click "Yes" to accept the license agreement.



(7) Click "Browse" to specify the directory where the driver is installed, or use the default destination, and click "Next" to continue.



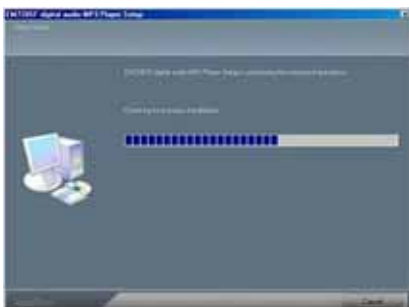
(8) Click "Next" to continue.



(9) The system executes the requested operations.



(10) Click "Finish" to finish the installation and restart the computer.



Tip: For WIN2000 or WINXP, it is recommended to install the driver also so that you can upgrade, initialize or recover the system.

12 Firmware Upgrade

To get the latest version of the firmware,

- (1) Install the enclosed driver first.
- (2) Connect the player to the PC.
- (3) Click “Start” “Program” EMXXX Digital Audio Player, and select “Firmware Update”.(Note: EM728SF is the player model)
- (4) You are guided to the following upgrade dialogue. If “Format Date Area” is selected , all files stored in the player will be erased.



- (5) Press the “Start” button to start upgrading.

Note: Firmware upgrade process will format the device. Please backup your important data before upgrading.

13 Troubleshooting

Problem	Possible Cause	Solution
The LCD displays nothing when the Play key is pressed.	<ol style="list-style-type: none"> 1. No battery or battery is too low. 2. The keys are locked. 	<ol style="list-style-type: none"> 1. Install or replace the battery. 2. Unlock the Hold switch.
The player cannot be powered on even the battery is replaced.	FAT table in the flash memory may have errors in the case of strong magnet, static, and incorrect disconnection.	Upgrade the firmware
Press the Play key after turning on, while the player has no response.	The keys are locked by Hold switch	Slide the Hold switch to the unlocked position.
No sound when playing music or voice file.	<ol style="list-style-type: none"> 1. The volume is too low. 2. There are problems with the audio file. 	<ol style="list-style-type: none"> 1. Adjust the volume. 2. Delete the file or play oth files.

The player cannot be connected to the PC.	<ol style="list-style-type: none"> 1. The driver is not installed or destroyed. 2. The USB interface is not supported by PC's motherboard. 	<ol style="list-style-type: none"> 1. Install or reinstall the driver shipped with the player. 2. Update or replace the PC's motherboard.
The displayed time is changing constantly.	The bit rate of the MP3 file is changing during playback.	Try to use fixed bit rate to compress the MP3 file.
The PC has error when you plug and unplug the player.	The player is disconnected from the PC abruptly while transferring files.	Do not disconnect the player from the PC when transferring files.
Total memory displayed on the player is not in accordance with the marked amount.	Part of memory is used to store programs and display characters.	
Some of MP3 files cannot be played properly.	The MP3 file is compressed by a standard, such as MPEG I Layer 1 or Layer 2 that the player does not support.	<ol style="list-style-type: none"> 1.Delete the unsupported MP3 files. 2.Use MPEG I Layer 3 standard to compress the unsupported MP3 files.

14 Technical Specifications

Item	Specification
Capacity	16MB/32MB/64MB/128MB/256MB/512MB/1GB
Battery Type	AAA-size alkaline or chargeable Lithium Battery
Battery Life	6-10 Hours
LCD	128X32 Pixel , White EL Backlight
Earphone Power	5mW+5mW
Output Frequency	20HZ-20KHZ
Record Bit Rate	8KHz
Audio File Format	MP3 (MPEG 1/2/2.5 layer 3) ,WMA
Record Format	WAV
EQ Mode	Normal, Classic, Jazz, Pop, Rock, Bass
SNR	> 90dB
Supported Languages	Simplified Chinese, Traditional Chinese and English
USB Port	USB2.0
Operational Temperature	0 ~ +55
Storage Temperature	0 ~ +55
Operational Relative Humidity *	20% ~ 90%
Storage Relative Humidity *	20% ~ 93%

15 Notice

✦ Plug & Play is only available for WIN2000/XP. It is not supported by WIN98 and

WIN98SE under which a driver needed to be installed.

- ✦ Push the Hold switch to the unlocked position to enable all keys before operation.
- ✦ Please replace the battery immediately when the display indicates low battery, or the device will be powered off automatically.
- ✦ Please unplug the player properly to avoid data losing.
- ✦ The transfer rate displayed on the PC may be different depending on the operating system. Exact transfer rate should be subject to the player's indication.
- ✦ When the recorded voice file is too large, it is normal that the response of the device may be slow.