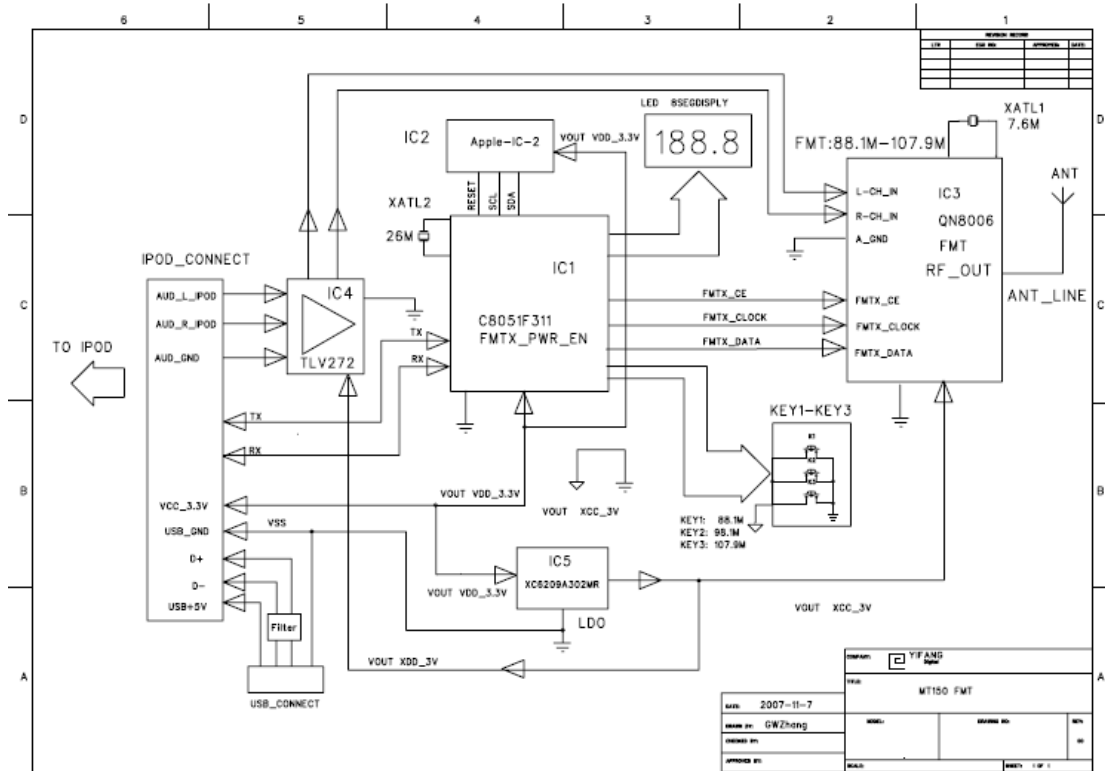


PRODUCT illustrate

1. System introduce

MT300 is a FM transmitter, designed to play the iPod or iPhone through your car, home, or portable stereo. The FM transmitter function turns on when the iPod or iPhone is connected.



2.1 structure introduce

The system is consist of MCU (C8051F311)、Audio amplifier (TLV272),LDO(XC620A302) and FM unit(QN8006).

2.2 Description

When the **iPod or iPhone** is connected, It provide a power +3.3V and turns on the MT300, then MCU (C8051F311) verify the authorization through Apple-IC-2,then turns on FM unit(QN8006), & displays FM frequency on 8 segment LED. Audio signal from iPod or iPhone was processed and controlled via FM unit(QN8006). FM unit QN8006 is a low power stereo FM transmitter, modulate Audio signal (sent from audio processing unit TLV272) to RF oscillator, then send to space by one antenna.

2.3 Power

MT300 could get power supply from iPod or iPhone.