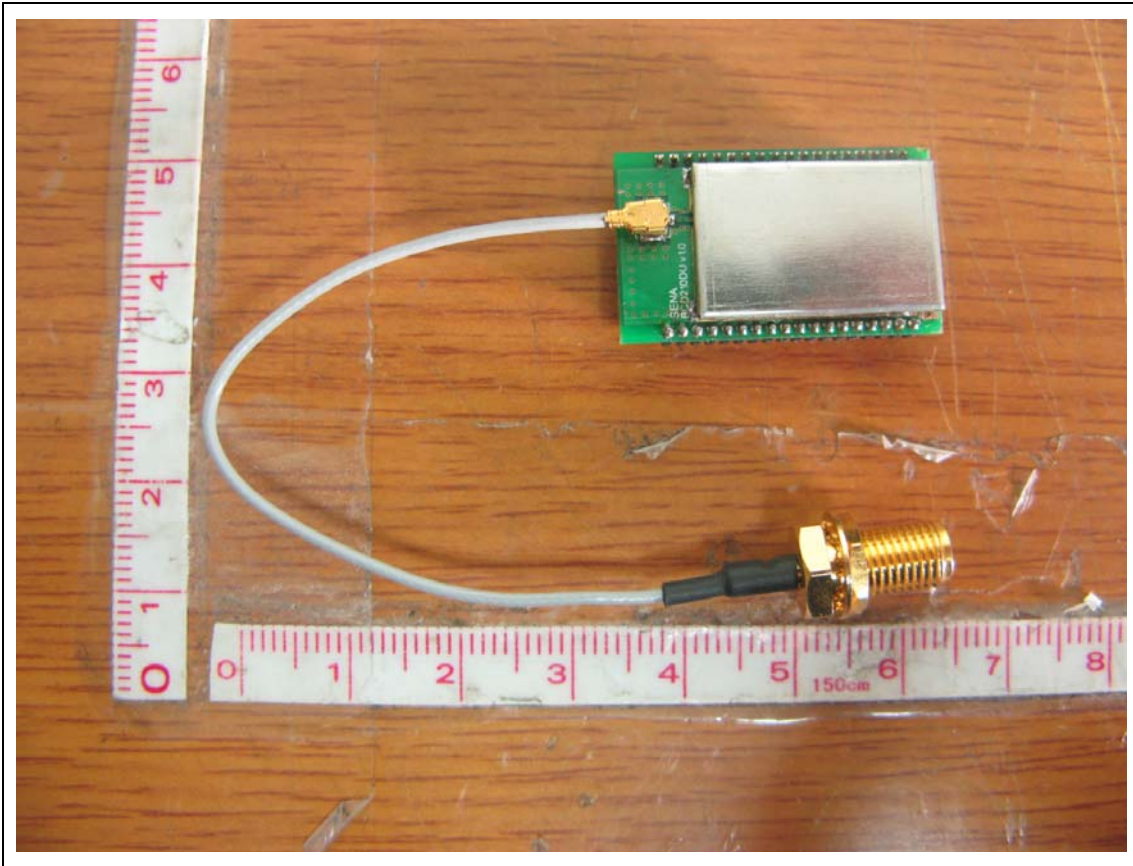
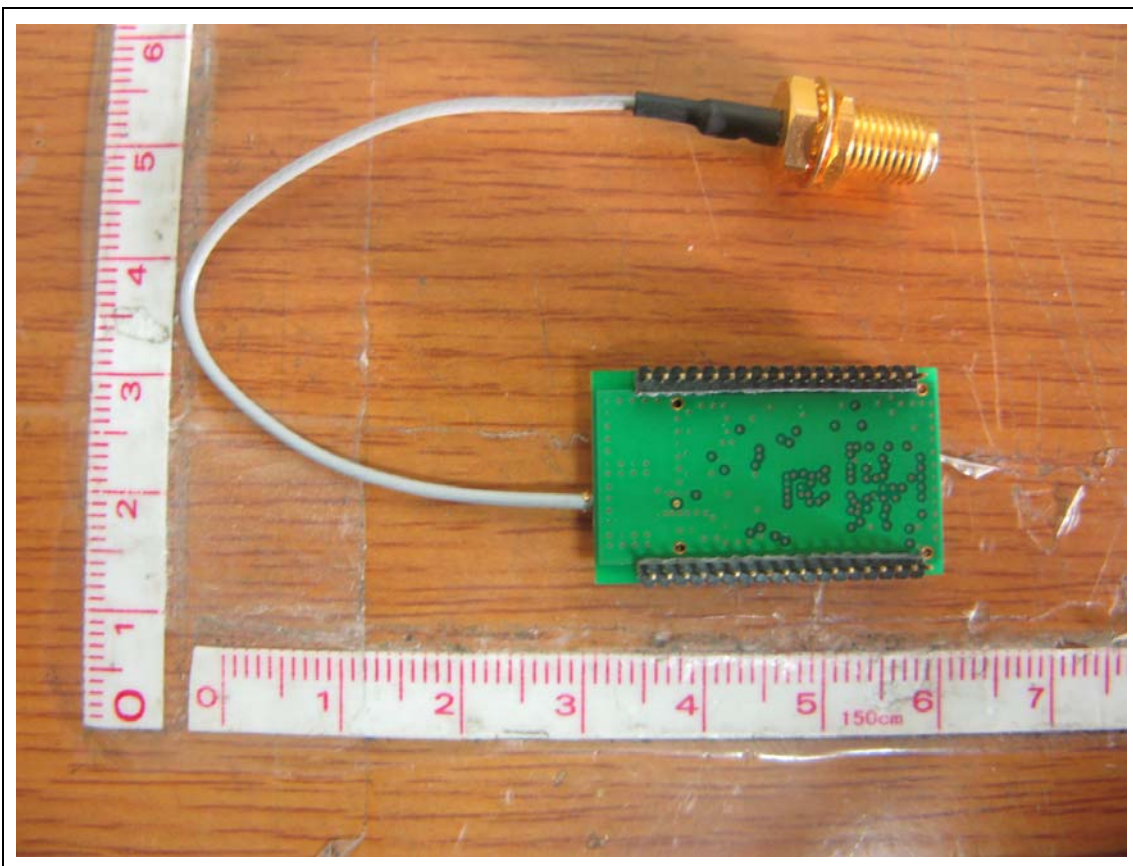


Parani-BCD210DU Basic model (DIP Type & U.FL Type)

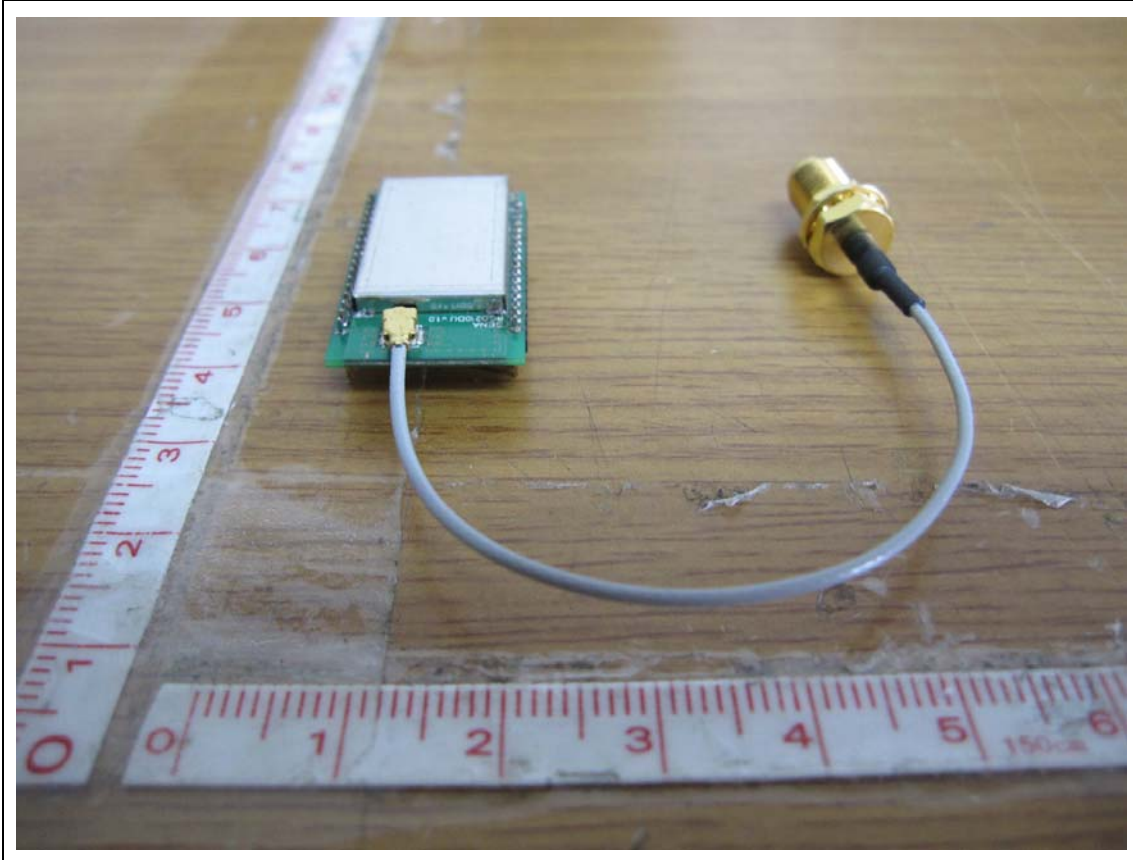
Upper



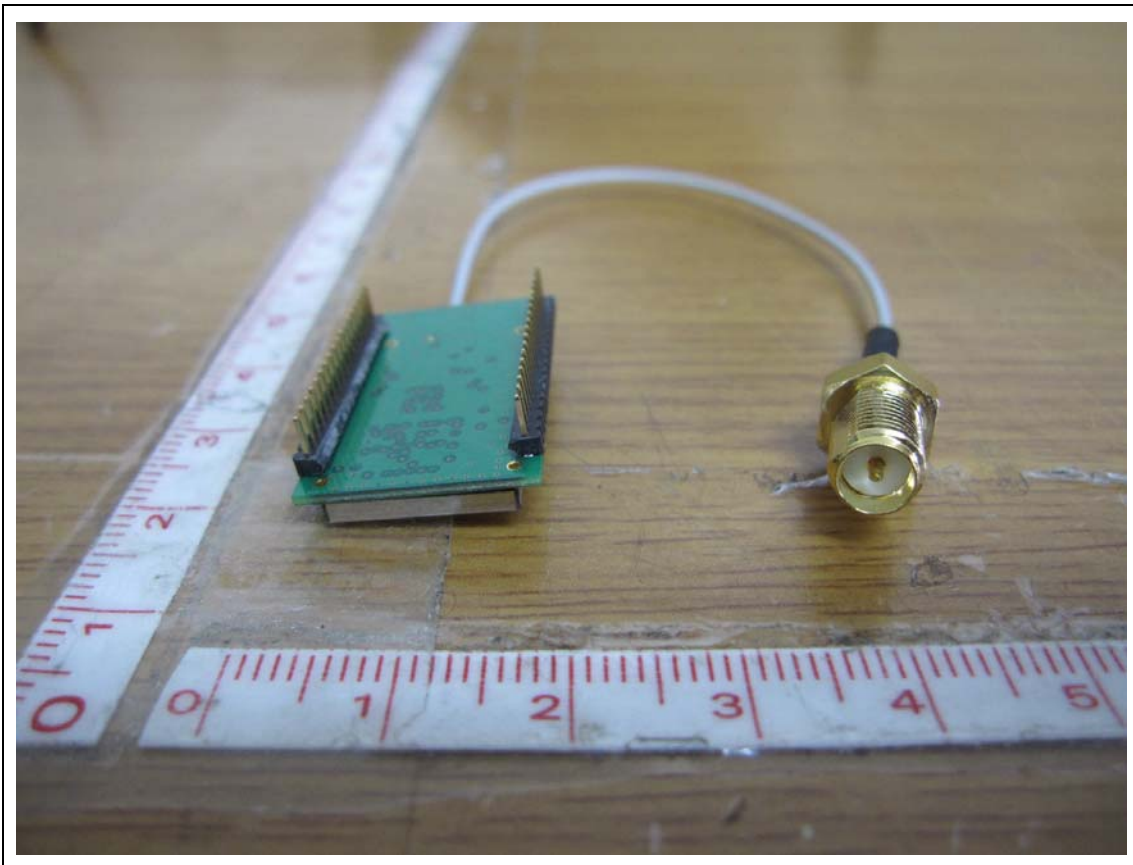
Lower



Front

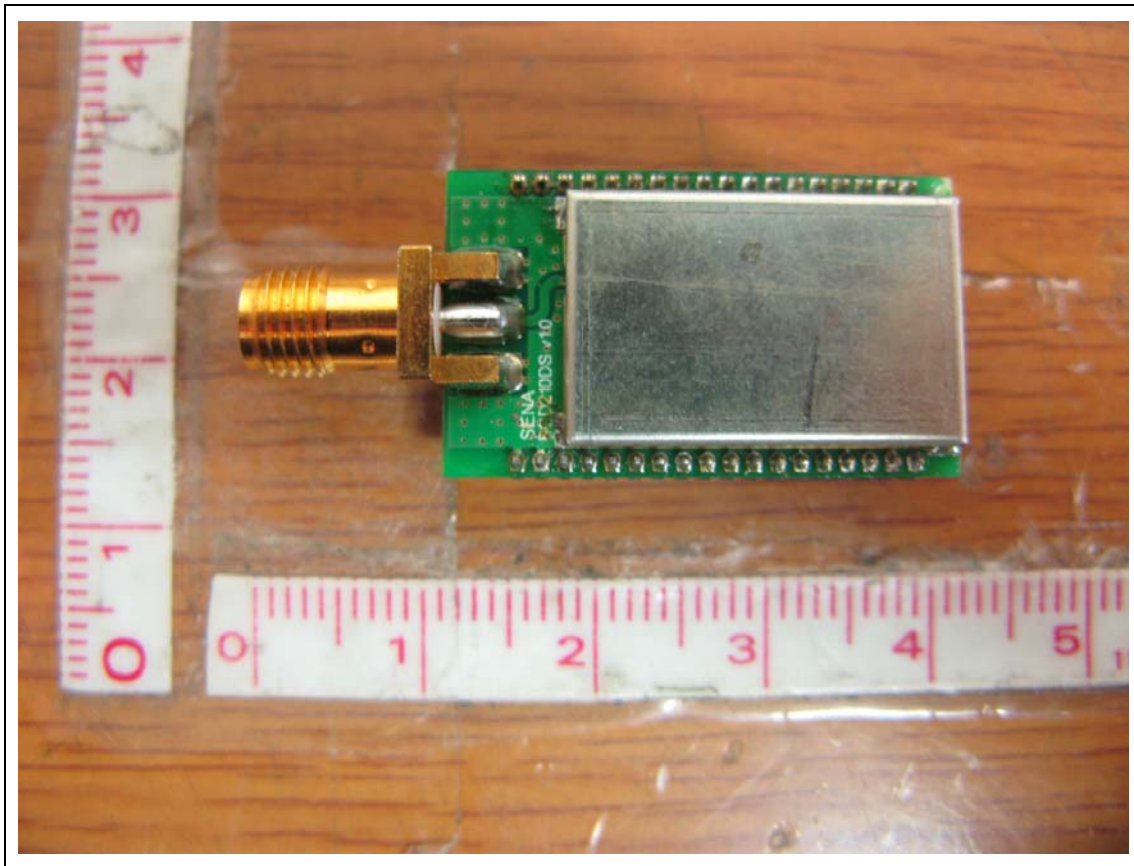


Rear

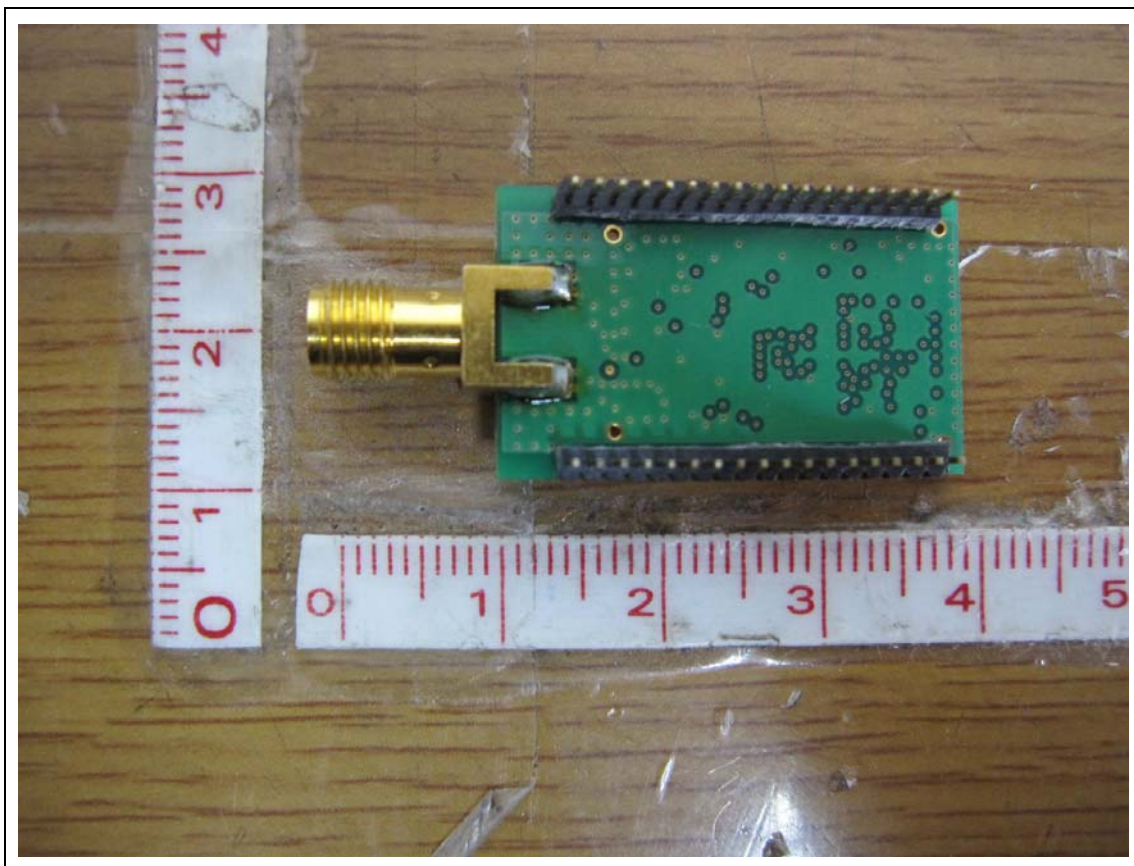


Parani-BCD210DS ADD Model (DIP Type & RP-SMA Type)

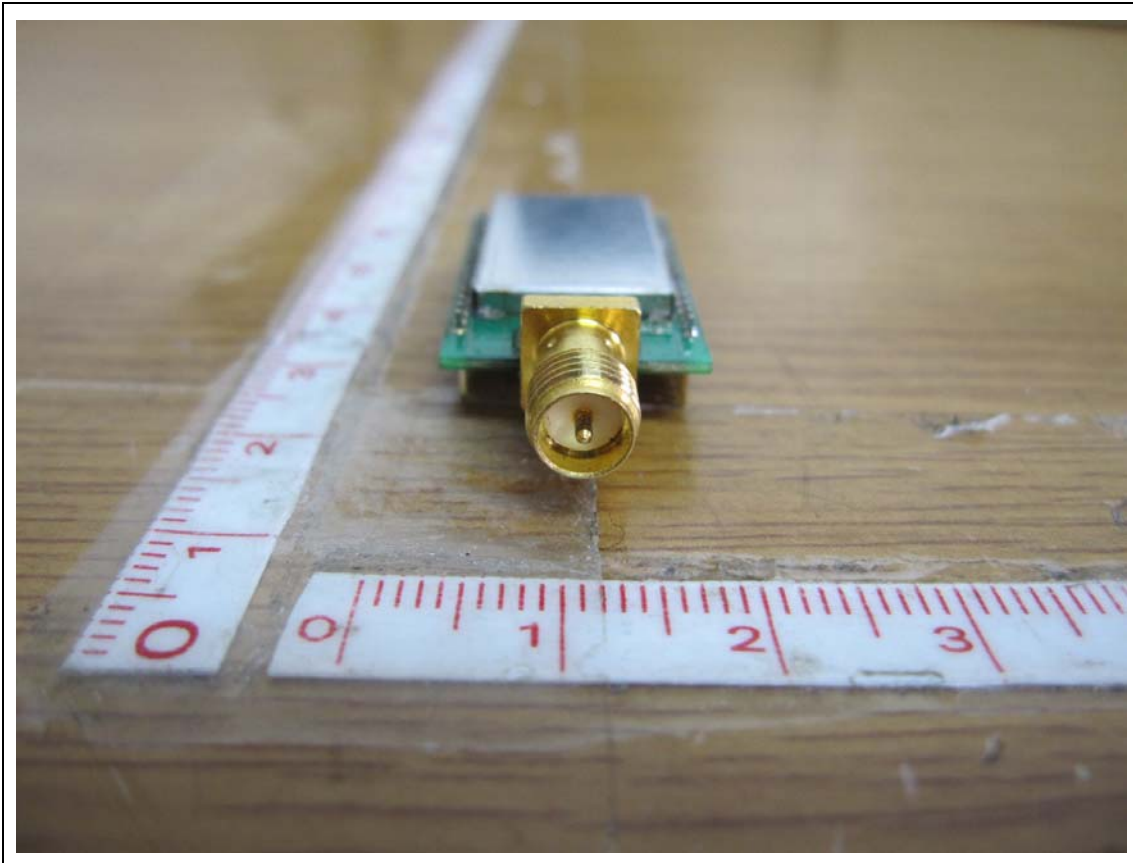
Upper



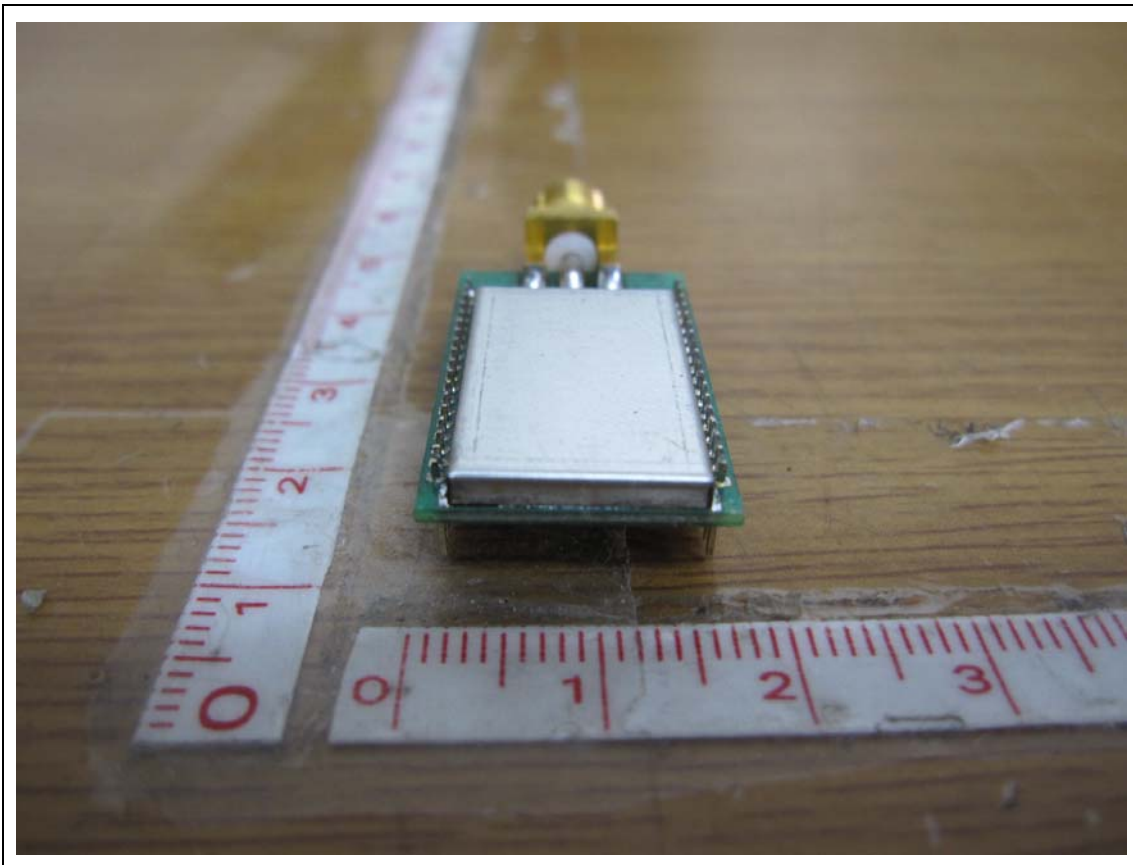
Lower



Front

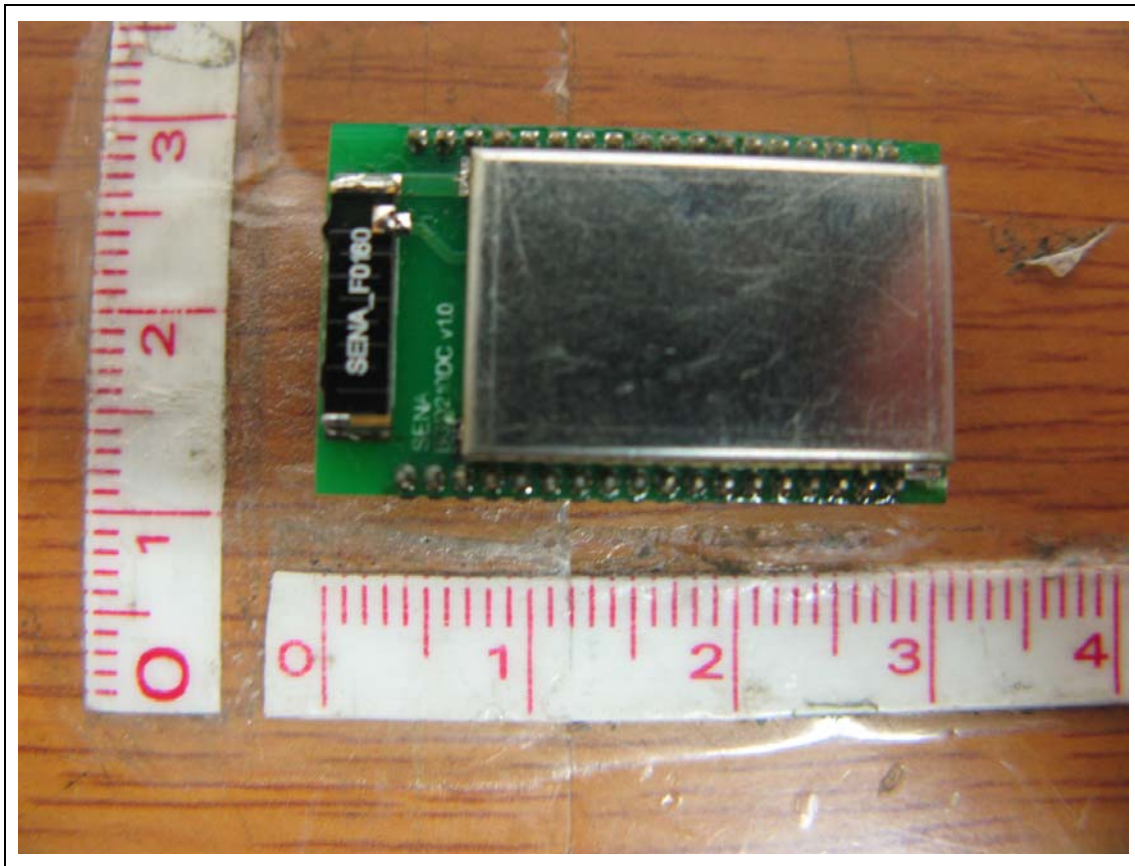


Rear

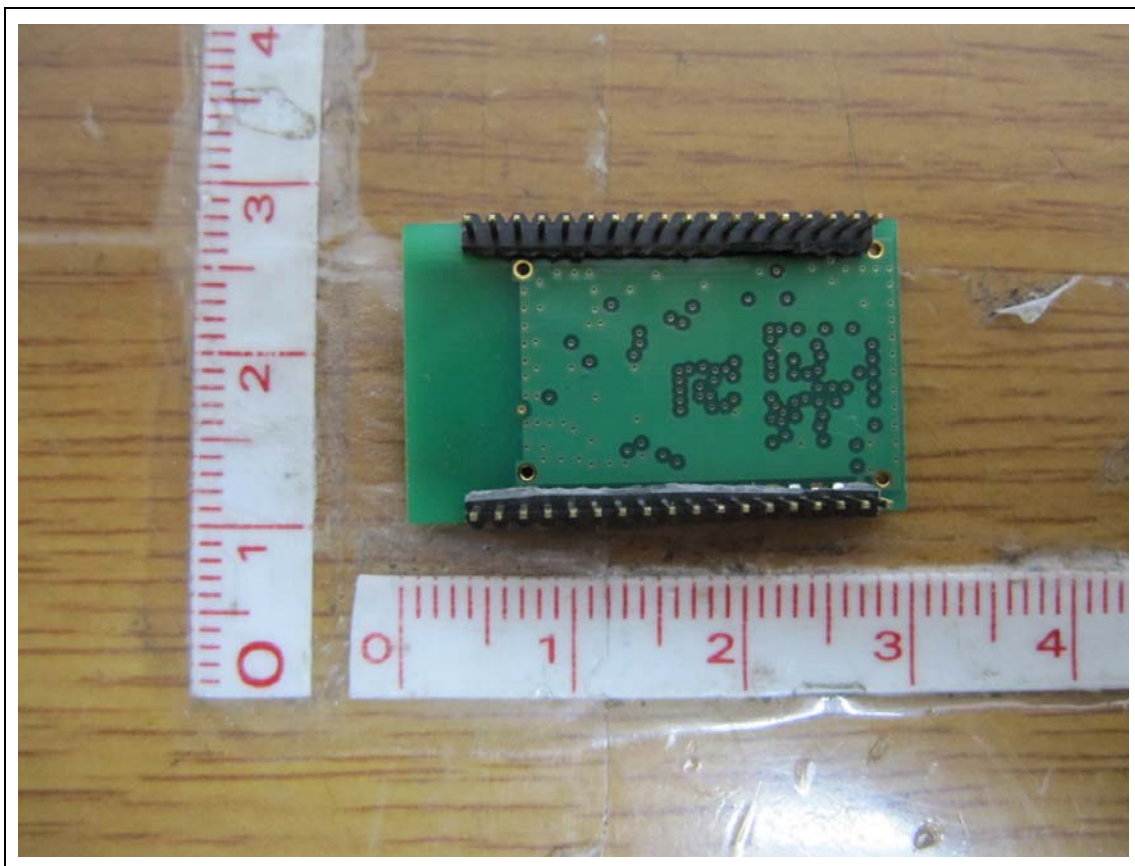


Parani-BCD210DC Add Model(DIP Type & Chip Type)

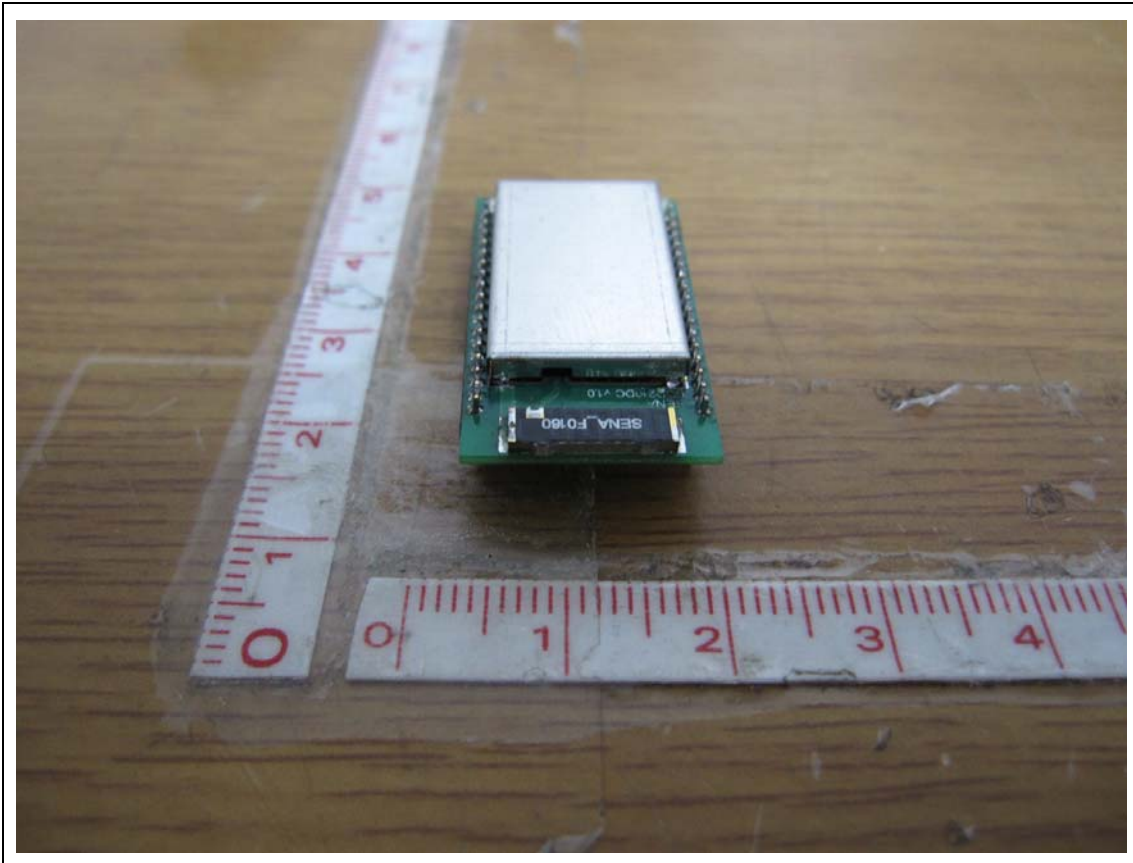
Upper



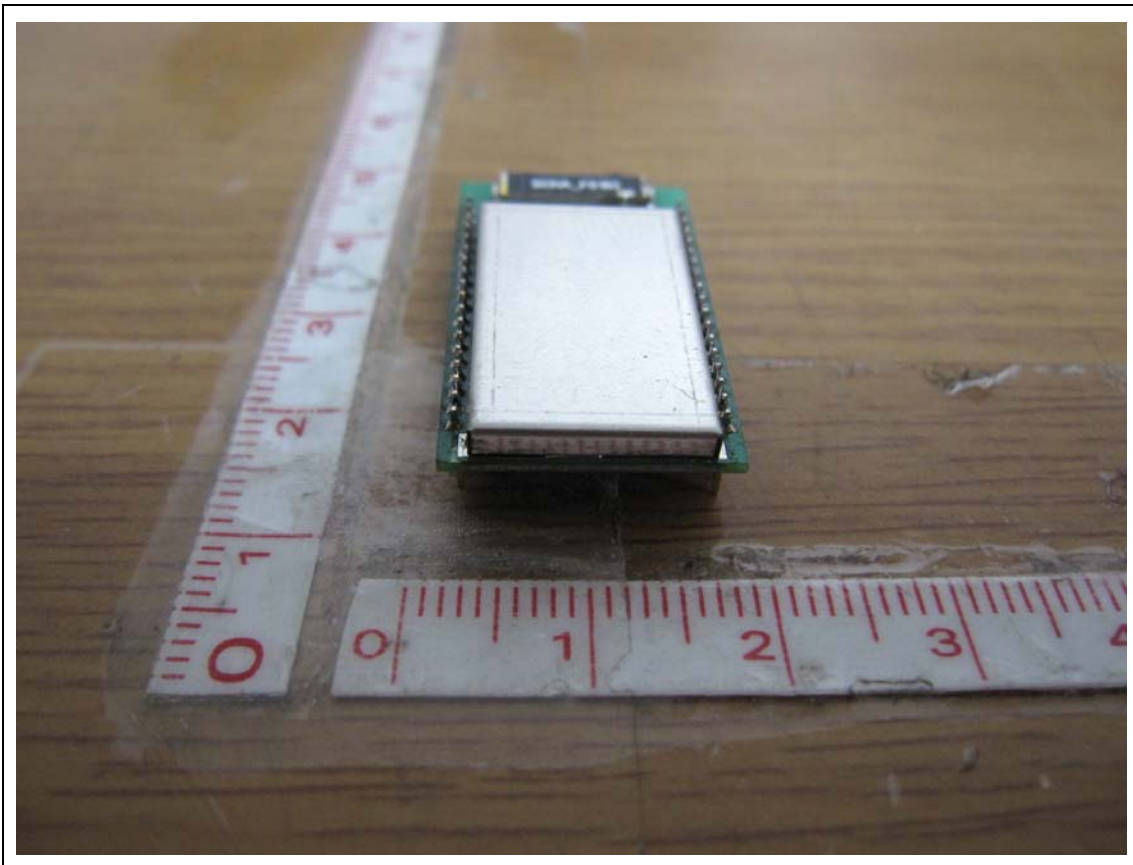
Lower



Front

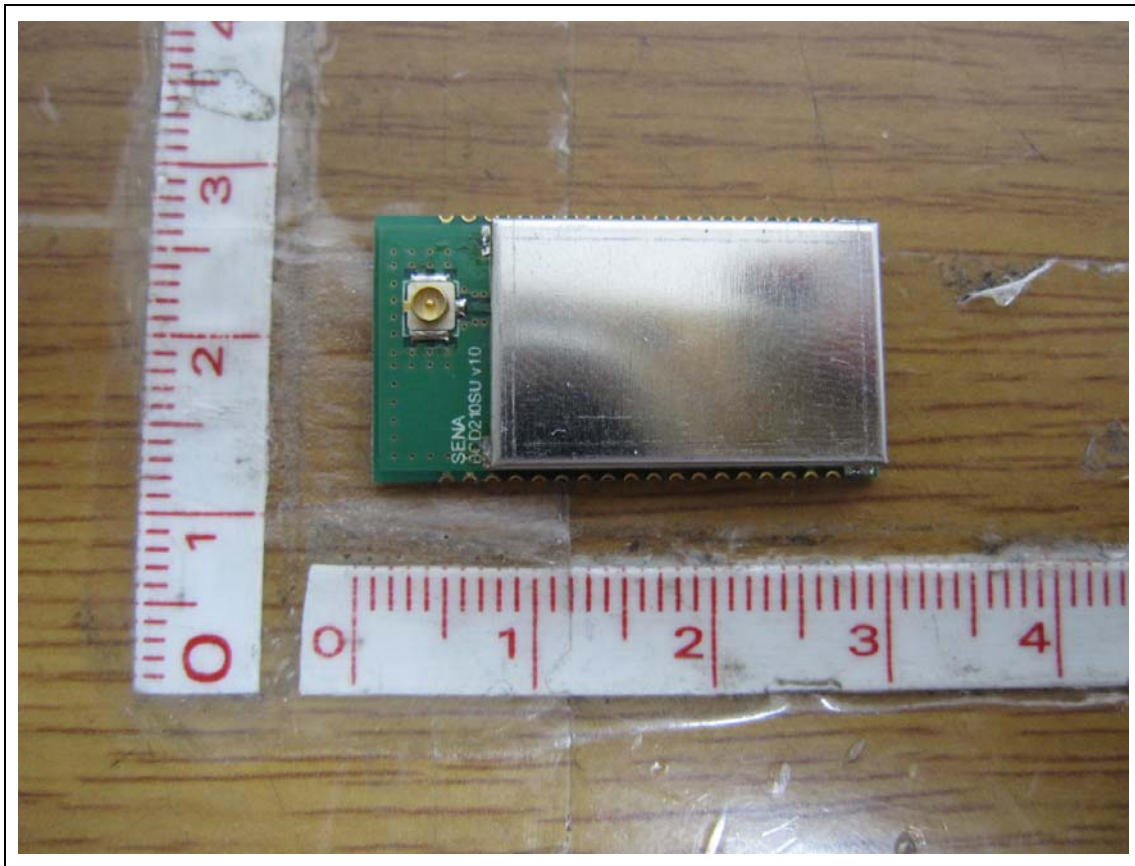


Rear

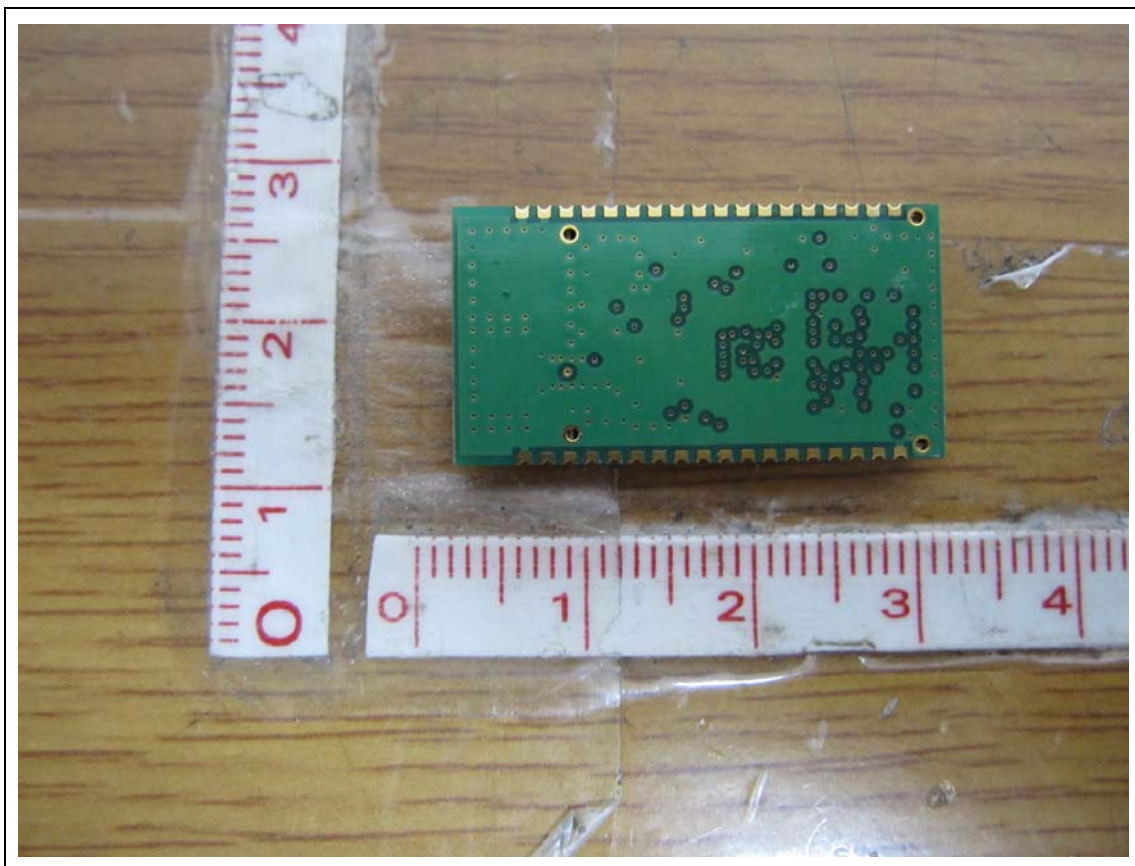


Parani-BCD210SU ADD Model(SMD Type & U.FL Type)

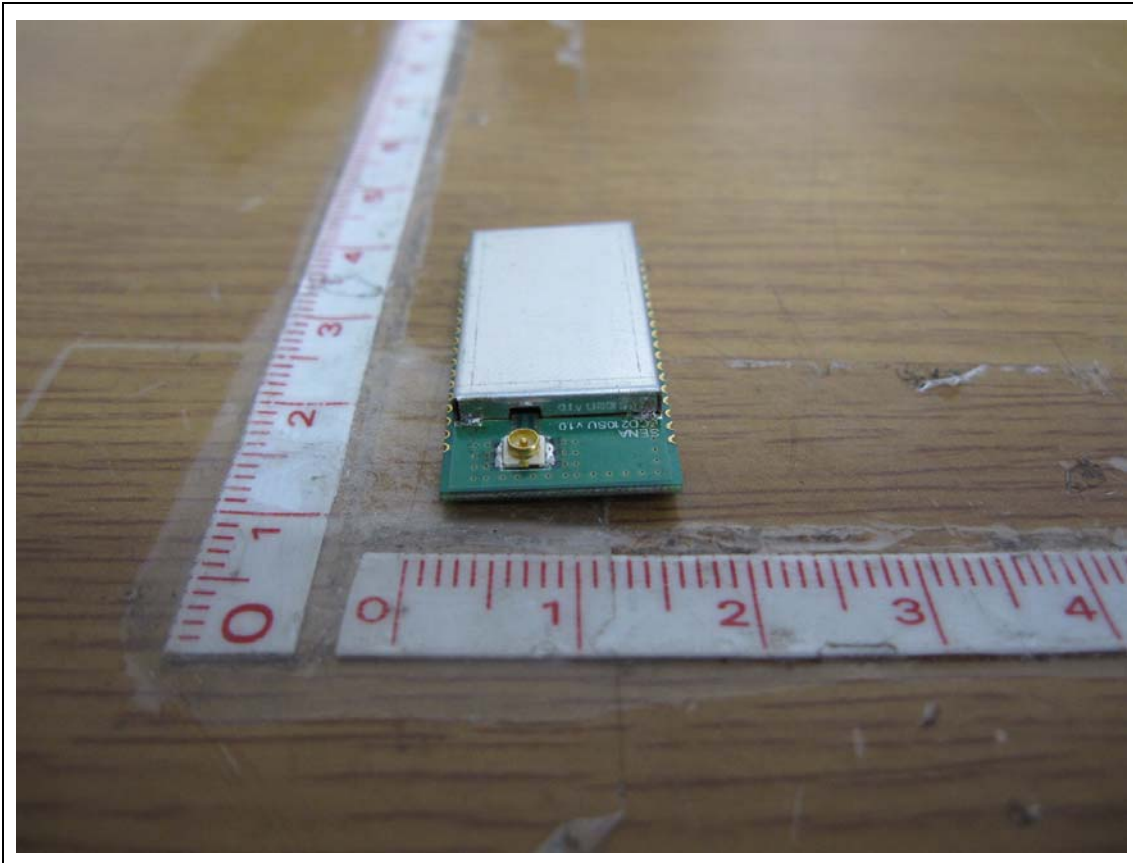
Upper



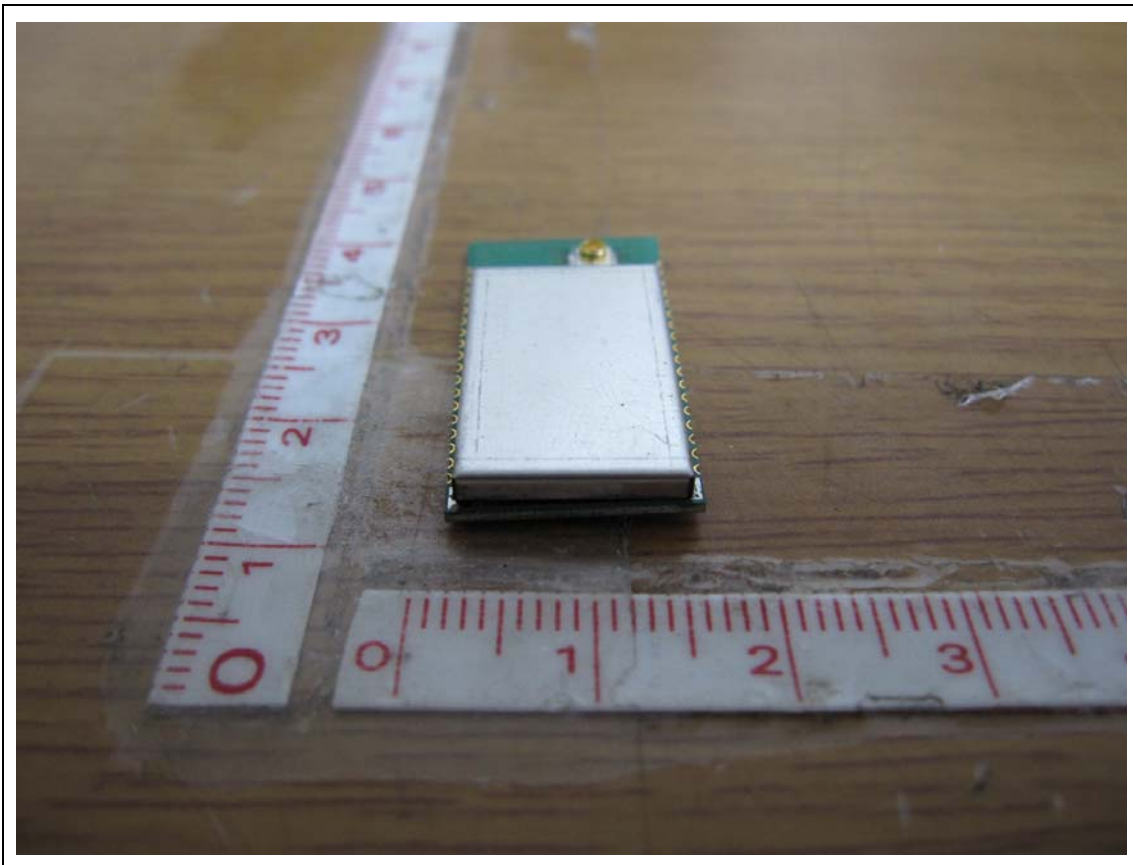
Lower



Front



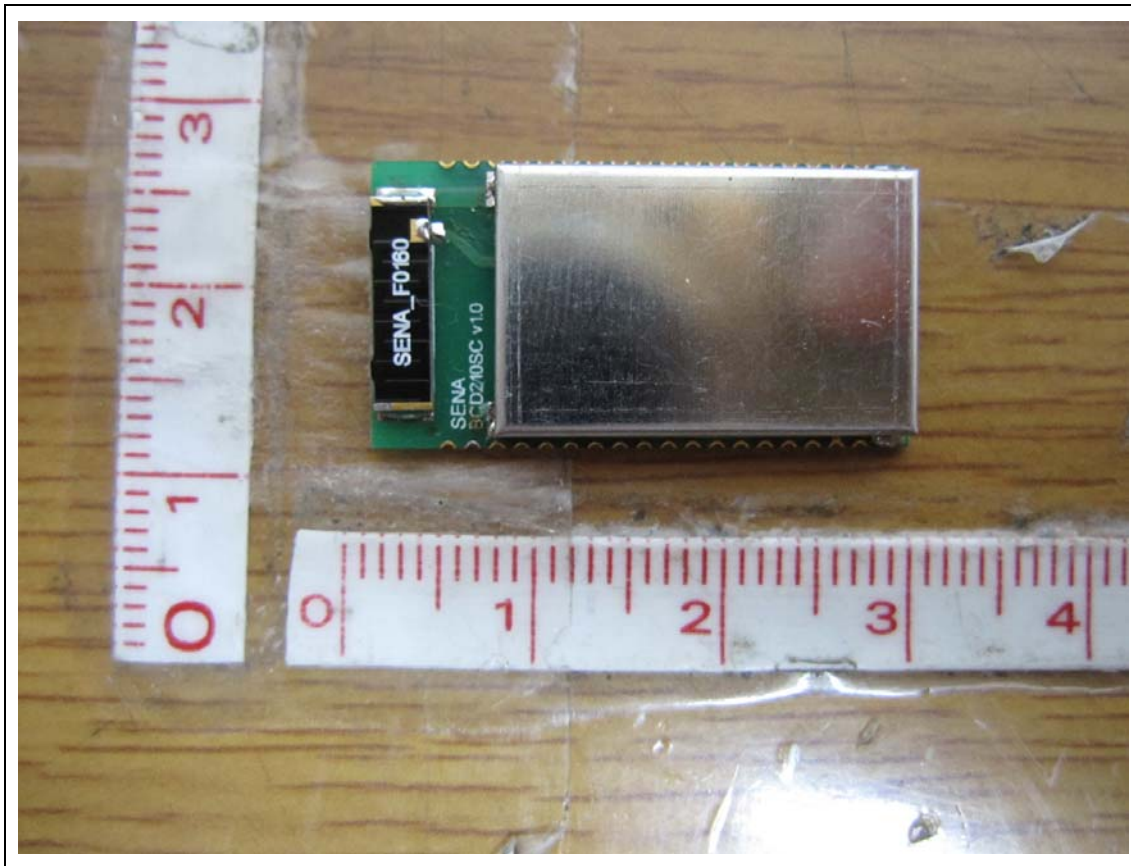
Rear



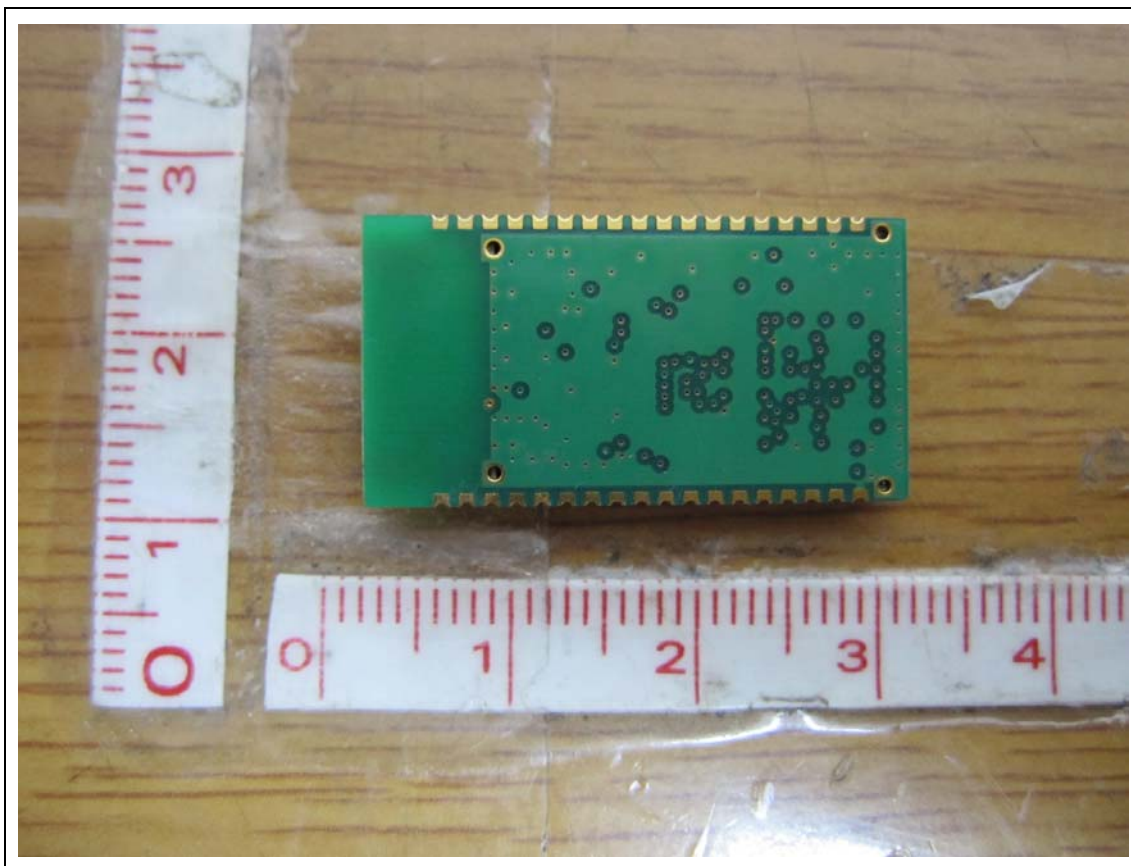


Parani-BCD210SC ADD Model(SMD Type & Chip Type)

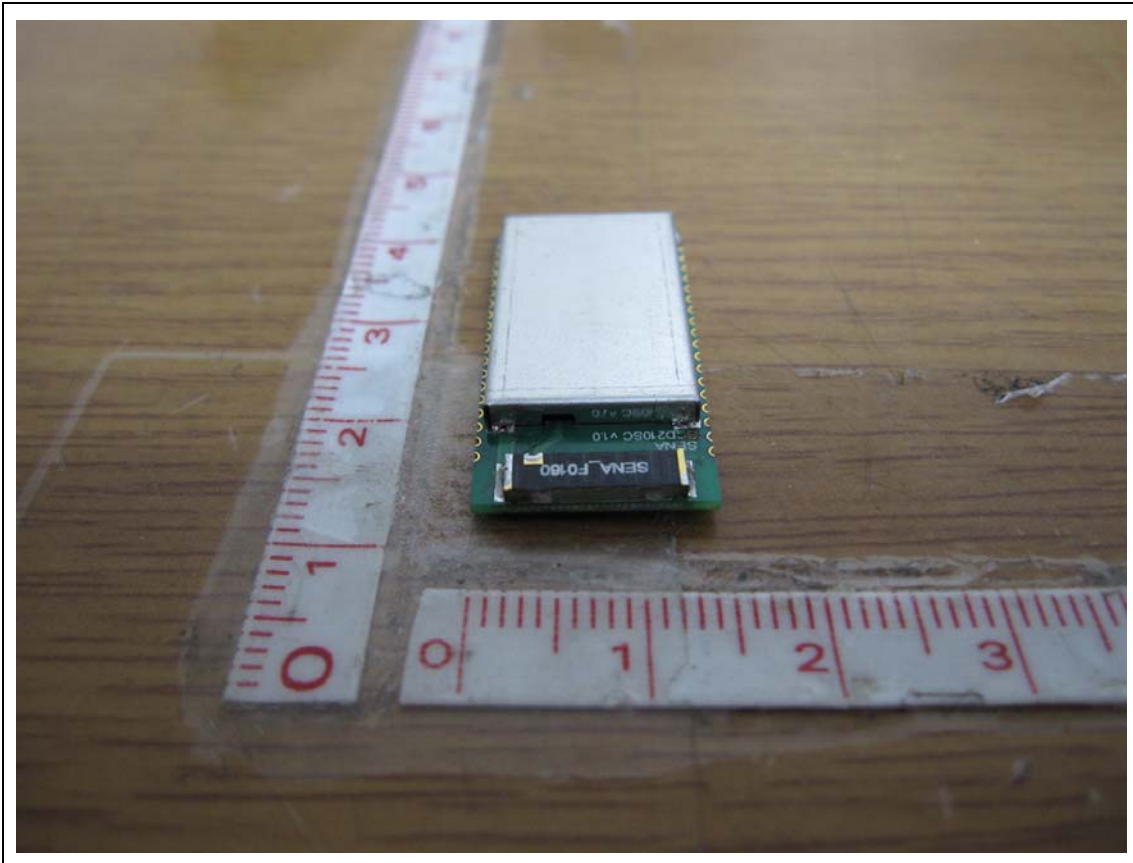
Upper



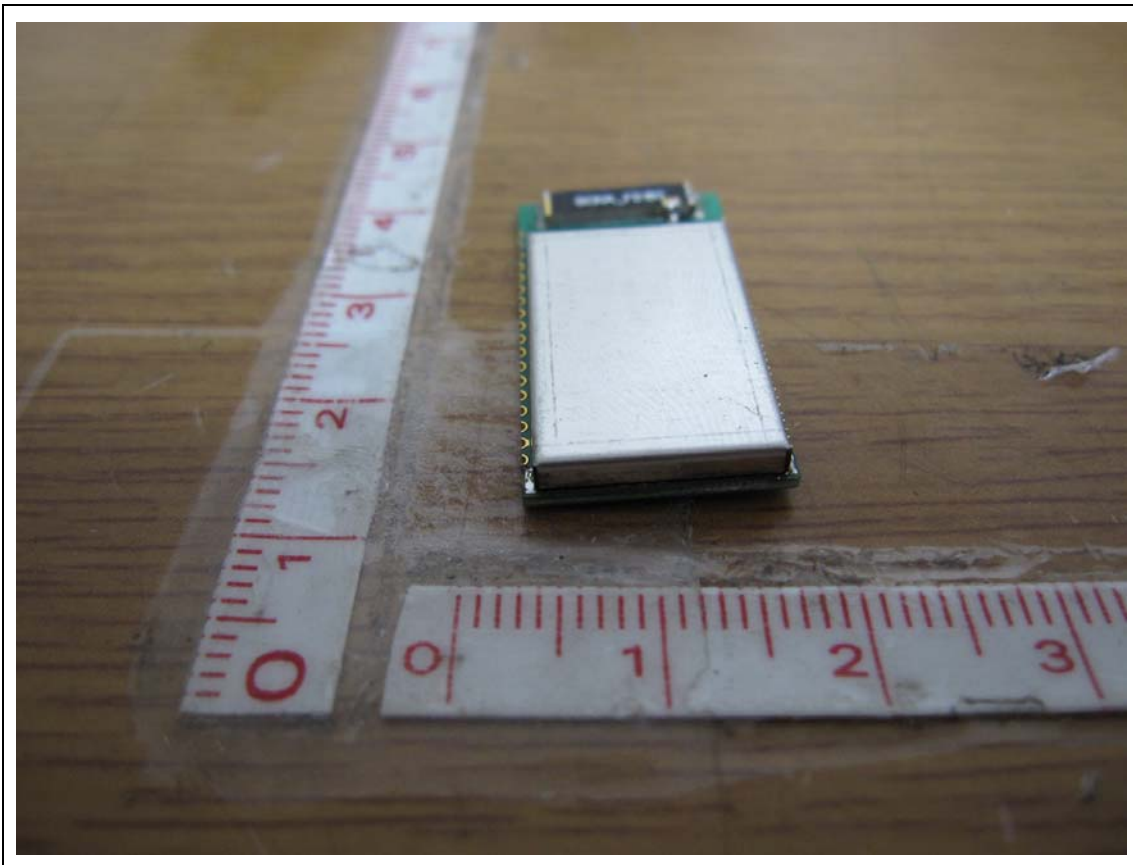
Lower



Front



Rear



ANTENNA- M/N: R-AN2400-1901RS



ANTENNA- M/N: R-AN2400-5801RS



ANTENNA- M/N: AN2400-3306RS



ANTENNA- M/N: SENA\_F0160

