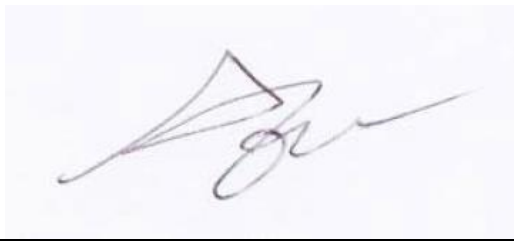


Jan 16th, 2018

Applicant: **SENA TECHNOLOGIES.Inc**
FCC ID: **S7A-SP35/ IC : 8154A-SP35**

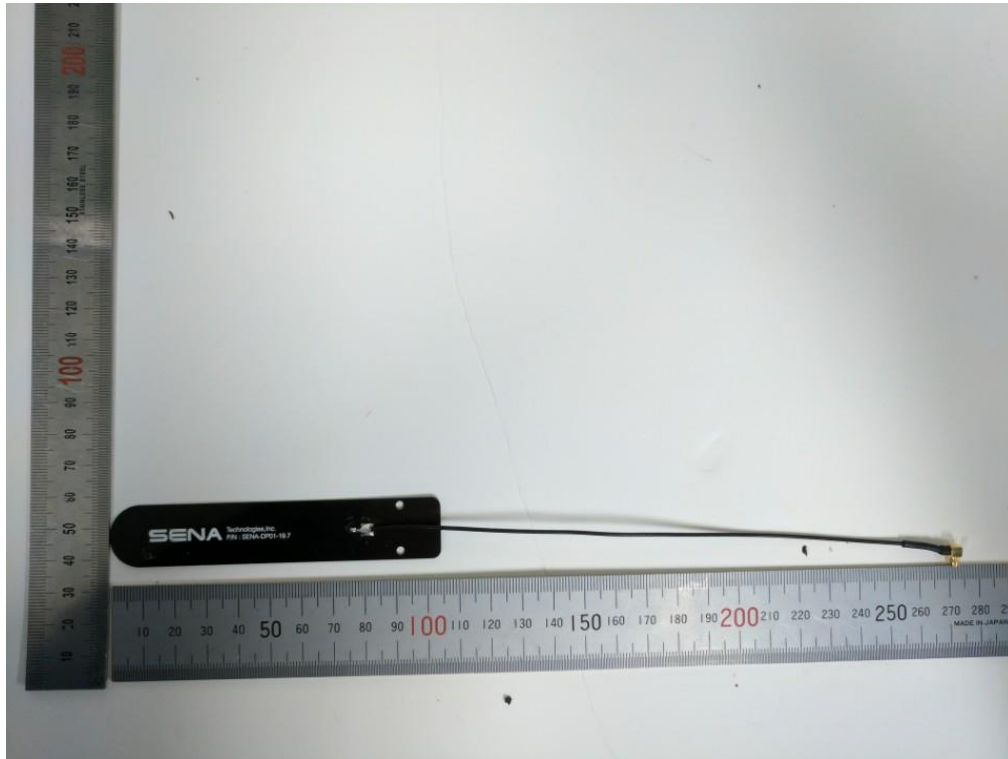
We hereby declare that

1. Add the 1 type antennas as below,



Seunghyun Kim
Research Engineer

SENA-DP01-19.7 (PCB Antenna: 0.6dBi) / Original Antenna



30K-Antenna (PCB Antenna: 0.41dBi) / Add Antenna

