

SAR Plots

- Verification Plots
- SAR Test Plots

DT&C Co., Ltd.

DUT: Dipole 2450 MHz; Type: D2450V2; Serial: D2450V2 - SN:920

Communication System: CW; Frequency: 2450 MHz; Duty Cycle: 1:1
Medium parameters used: $f = 2450$ MHz; $\sigma = 1.777$ S/m; $\epsilon_r = 38.763$; $\rho = 1000$ kg/m³
Phantom section: Flat Section

DASY5 Configuration:

Probe: ES3DV3 - SN3328; ConvF(4.68, 4.68, 4.68); Calibrated: 2016-03-18; Electronics: DAE4 Sn1394
Phantom: SAM (30deg probe tilt) with CRP v5.0(Right); Type: QD000P40CD; Serial: TP:1220
Measurement SW: DASY52, Version 52.8 (8); SEMCAD X Version 14.6.10 (7331)

Test Date: 2016-10-06; Ambient Temp: 21.4; Tissue Temp: 21.6

2450 MHz System Verification

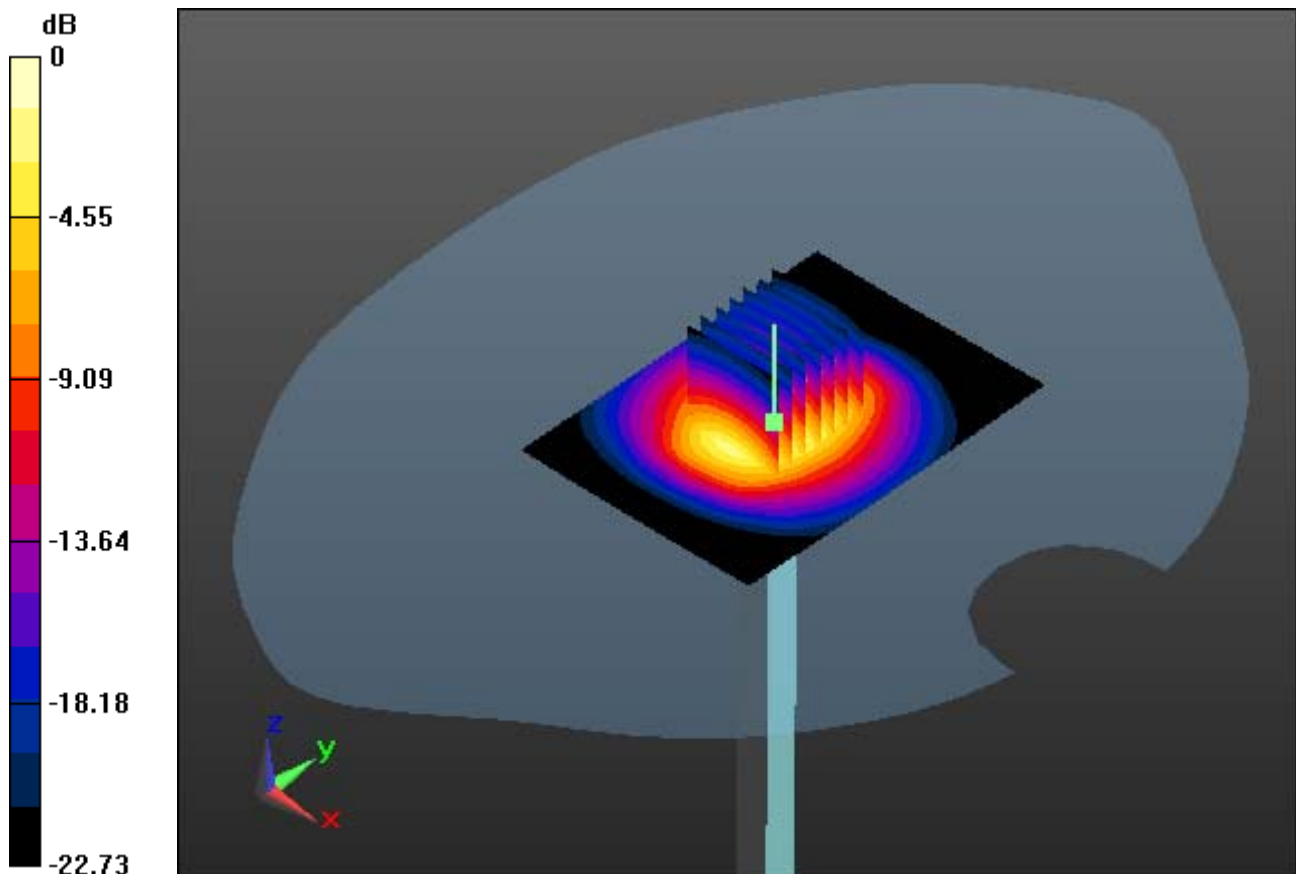
Area Scan (51x71x1): Interpolated grid: dx=12mm, dy=12mm

Zoom Scan (7x7x7)/Cube 0: Measurement grid: dx=5mm, dy=5mm, dz=5mm

Power Drift = -0.01 dB

Peak SAR (extrapolated) = 28.4 W/kg

SAR(1 g) = 13.5 W/kg; SAR(10 g) = 6.28 W/kg



0 dB = 17.9 W/kg

DT&C Co., Ltd.

DUT: Dipole 2450 MHz; Type: D2450V2; Serial: D2450V2 - SN:920

Communication System: CW; Frequency: 2450 MHz; Duty Cycle: 1:1
Medium parameters used: $f = 2450$ MHz; $\sigma = 1.777$ S/m; $\epsilon_r = 38.763$; $\rho = 1000$ kg/m³
Phantom section: Flat Section

DASY5 Configuration:

Probe: ES3DV3 - SN3328; ConvF(4.68, 4.68, 4.68); Calibrated: 2016-03-18; Electronics: DAE4 Sn1394
Phantom: SAM (30deg probe tilt) with CRP v5.0(Right); Type: QD000P40CD; Serial: TP:1220
Measurement SW: DASY52, Version 52.8 (8); SEMCAD X Version 14.6.10 (7331)

Test Date: 2016-10-06; Ambient Temp: 21.4; Tissue Temp: 21.6

2450 MHz System Verification

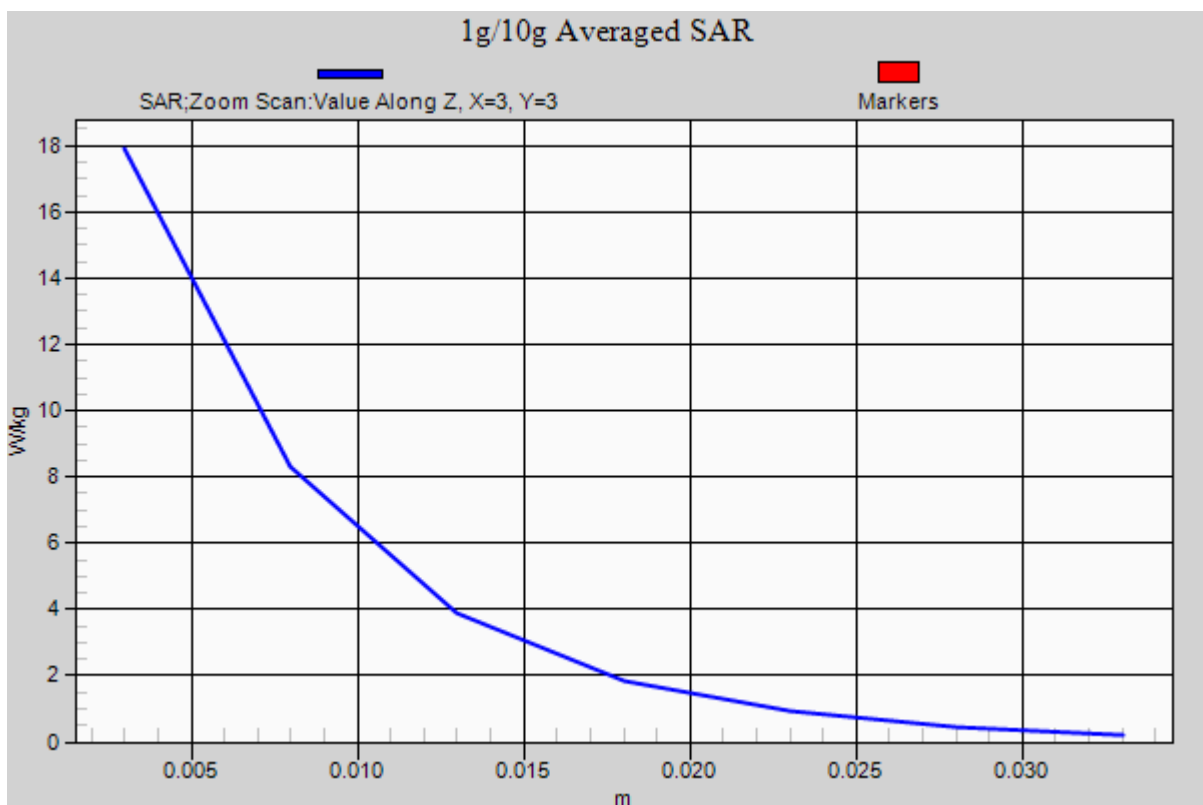
Area Scan (51x71x1): Interpolated grid: dx=12mm, dy=12mm

Zoom Scan (7x7x7)/Cube 0: Measurement grid: dx=5mm, dy=5mm, dz=5mm

Power Drift = -0.01 dB

Peak SAR (extrapolated) = 28.4 W/kg

SAR(1 g) = 13.5 W/kg; SAR(10 g) = 6.28 W/kg



DT&C Co., Ltd.

DUT: SPH10a; Type: Headset

Communication System: Bluetooth (0); Frequency: 2441 MHz; Duty Cycle: 1:1.30039

Medium parameters used: $f = 2441$ MHz; $\sigma = 1.764$ S/m; $\epsilon_r = 38.807$; $\rho = 1000$ kg/m³

Phantom section: Flat Section

DASY5 Configuration:

Probe: ES3DV3 - SN3328; ConvF(4.68, 4.68, 4.68); Calibrated: 2016-03-18; Electronics: DAE4 Sn1394

Phantom: SAM (30deg probe tilt) with CRP v5.0(Right); Type: QD000P40CD; Serial: TP:1220

Measurement SW: DASY52, Version 52.8 (8); SEMCAD X Version 14.6.10 (7331)

Test Date: 2016-10-06; Ambient Temp: 21.4; Tissue Temp: 21.6

Touch from Body, Rear, Bluetooth 1Mbps Ch. 39, Ant Internal

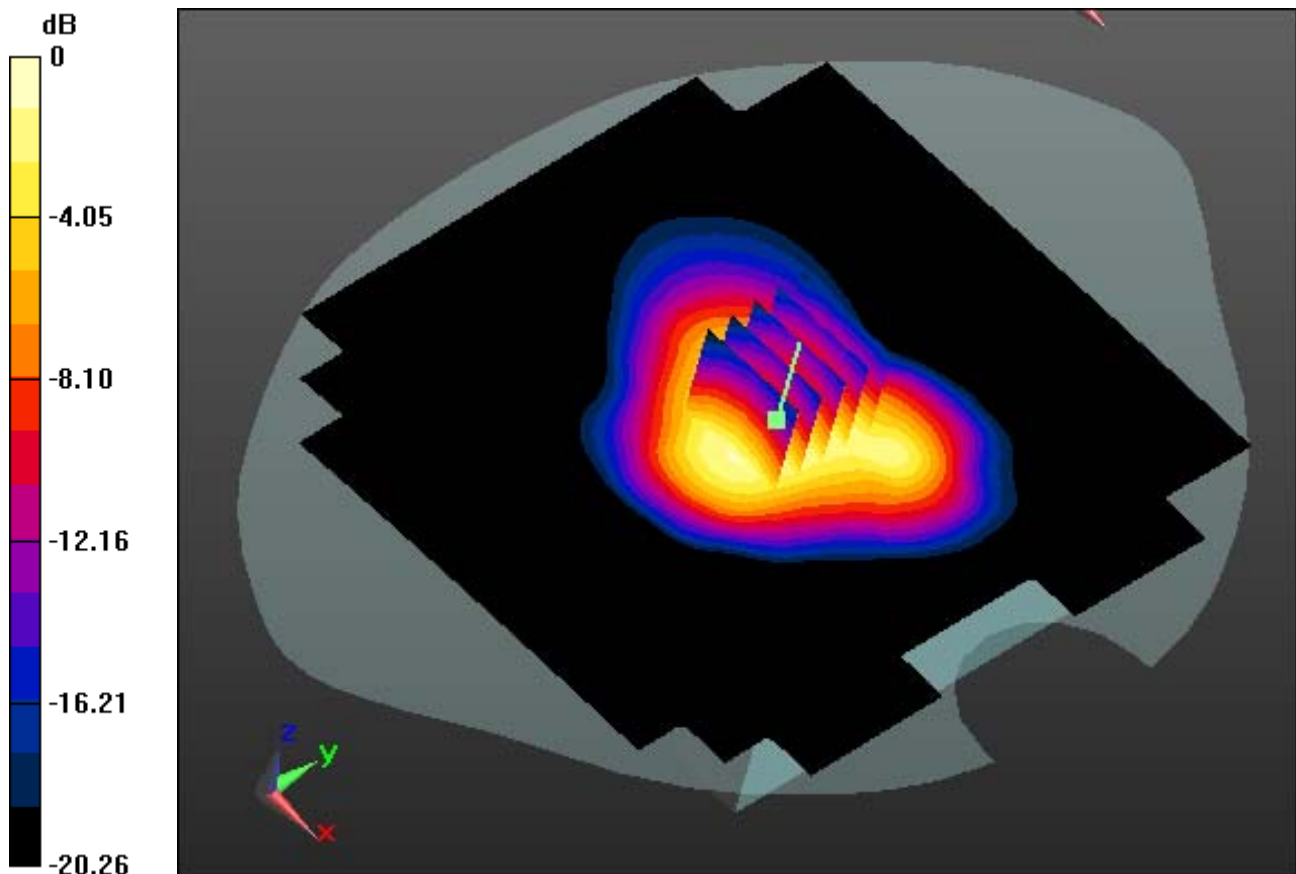
Area Scan (131x131x1): Interpolated grid: dx=12mm, dy=12mm

Zoom Scan (5x5x7)/Cube 0: Measurement grid: dx=8mm, dy=8mm, dz=5mm

Power Drift = -0.06 dB

Peak SAR (extrapolated) = 1.02 W/kg

SAR(1 g) = 0.583 W/kg; SAR(10 g) = 0.329 W/kg



0 dB = 0.690 W/kg

DT&C Co., Ltd.

DUT: SPH10a; Type: Headset

Communication System: Bluetooth (0); Frequency: 2441 MHz; Duty Cycle: 1:1.30039

Medium parameters used: $f = 2441$ MHz; $\sigma = 1.764$ S/m; $\epsilon_r = 38.807$; $\rho = 1000$ kg/m³

Phantom section: Flat Section

DASY5 Configuration:

Probe: ES3DV3 - SN3328; ConvF(4.68, 4.68, 4.68); Calibrated: 2016-03-18; Electronics: DAE4 Sn1394

Phantom: SAM (30deg probe tilt) with CRP v5.0(Right); Type: QD000P40CD; Serial: TP:1220

Measurement SW: DASY52, Version 52.8 (8); SEMCAD X Version 14.6.10 (7331)

Test Date: 2016-10-06; Ambient Temp: 21.4; Tissue Temp: 21.6

Touch from Body, Rear, Bluetooth 1Mbps Ch. 39, Ant Internal

With Enlarge plot image

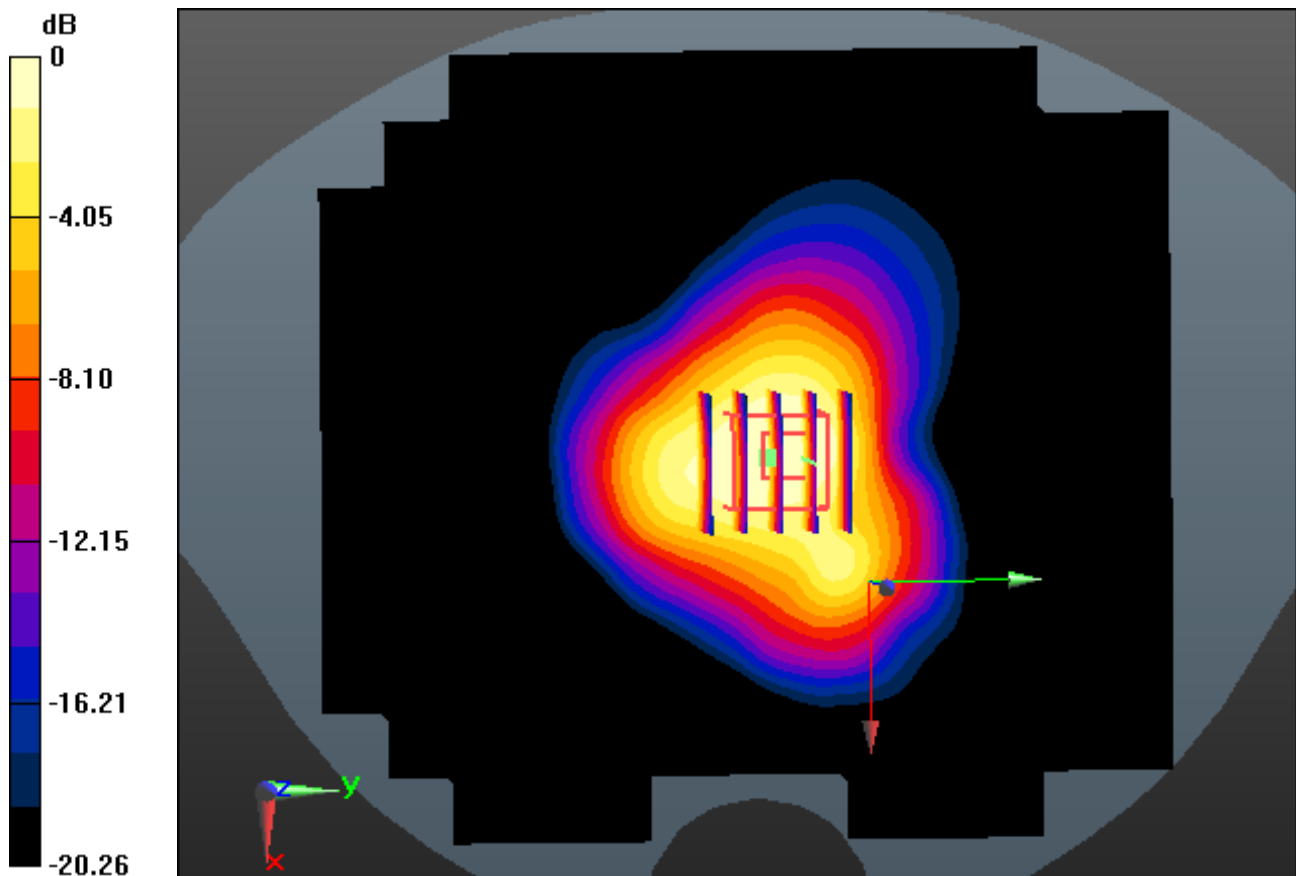
Area Scan (131x131x1): Interpolated grid: dx=12mm, dy=12mm

Zoom Scan (5x5x7)/Cube 0: Measurement grid: dx=8mm, dy=8mm, dz=5mm

Power Drift = -0.06 dB

Peak SAR (extrapolated) = 1.02 W/kg

SAR(1 g) = 0.583 W/kg; SAR(10 g) = 0.329 W/kg



0 dB = 0.690 W/kg

DT&C Co., Ltd.

DUT: SPH10a; Type: Headset

Communication System: Bluetooth (0); Frequency: 2441 MHz; Duty Cycle: 1:1.30039

Medium parameters used: $f = 2441$ MHz; $\sigma = 1.764$ S/m; $\epsilon_r = 38.807$; $\rho = 1000$ kg/m³

Phantom section: Flat Section

DASY5 Configuration:

Probe: ES3DV3 - SN3328; ConvF(4.68, 4.68, 4.68); Calibrated: 2016-03-18; Electronics: DAE4 Sn1394

Phantom: SAM (30deg probe tilt) with CRP v5.0(Right); Type: QD000P40CD; Serial: TP:1220

Measurement SW: DASY52, Version 52.8 (8); SEMCAD X Version 14.6.10 (7331)

Test Date: 2016-10-06; Ambient Temp: 21.4; Tissue Temp: 21.6

Touch from Body, Rear, Bluetooth 1Mbps Ch. 39, Ant Internal

Area Scan (131x131x1): Interpolated grid: dx=12mm, dy=12mm

Zoom Scan (5x5x7)/Cube 0: Measurement grid: dx=8mm, dy=8mm, dz=5mm

Power Drift = -0.06 dB

Peak SAR (extrapolated) = 1.02 W/kg

SAR(1 g) = 0.583 W/kg; SAR(10 g) = 0.329 W/kg

