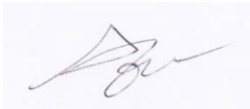


Nov 3<sup>rd</sup>, 2016

Applicant: **SENA TECHNOLOGIES.Inc**  
FCC ID: **S7A-SP31**  
IC: **8154A-SP31**

We hereby declare that

1. Add the antennas which are lower than default antenna as SENA-DP01-19.7 (1.3dBi)



---

**Seunghyun Kim**  
**Research Engineer**

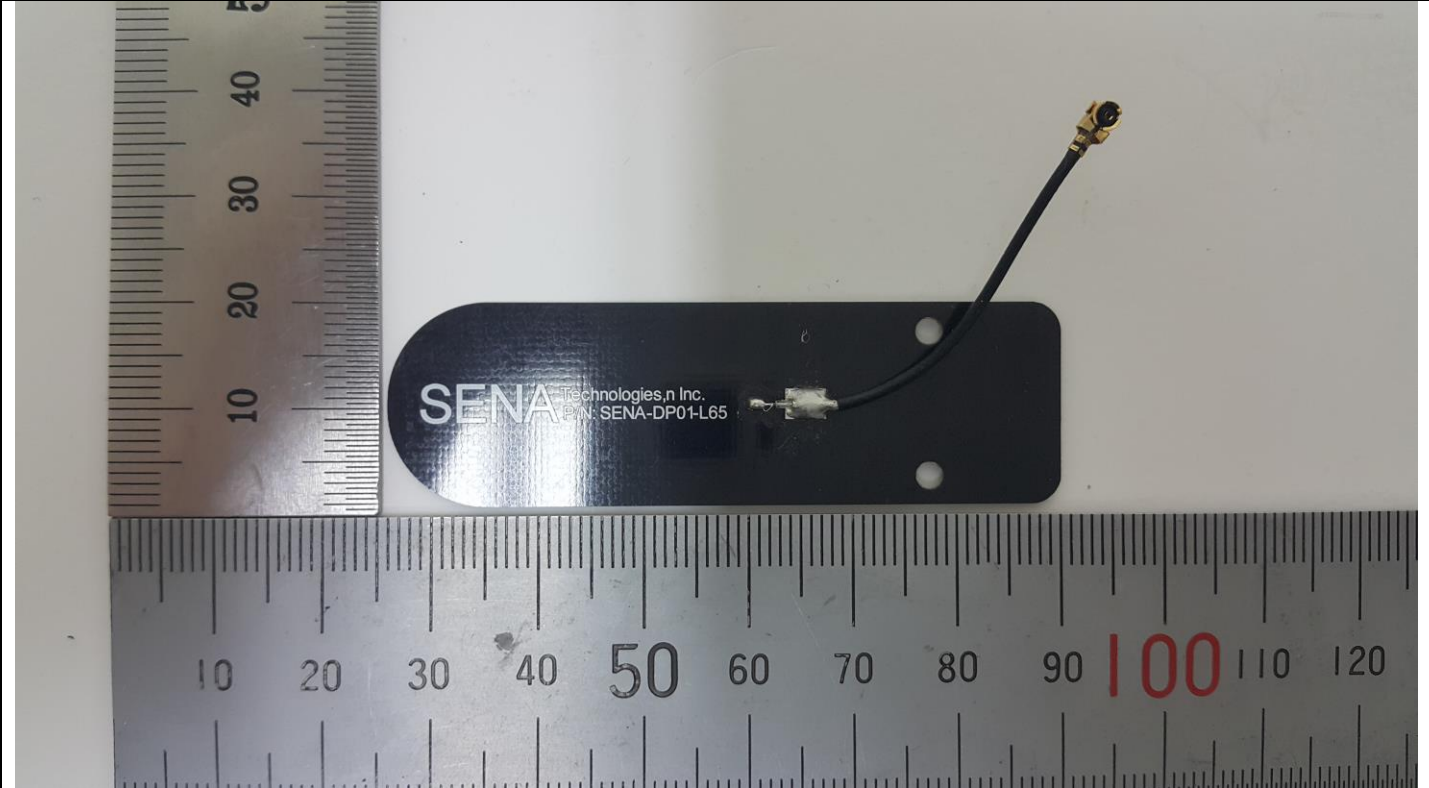
SENA-DP01-19.7 (1.30dBi)



SENA-DP02-19 (0.62dBi)



SENA-DP01\_L65 (0.50dBi)



SENA\_DP03\_19.7 (0.20dBi)

