

March 09, 2023

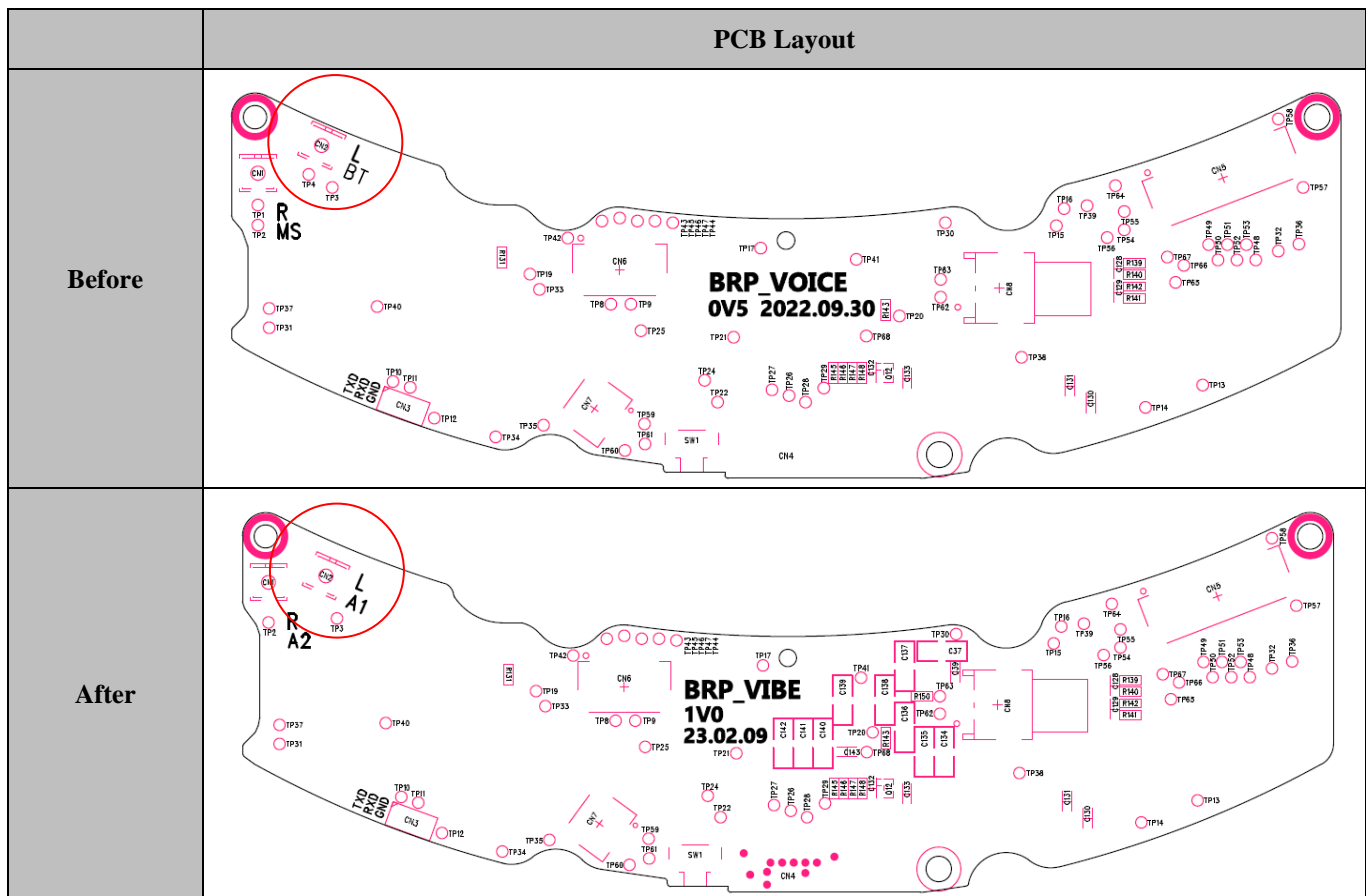
**Applicant: SENA TECHNOLOGIES.Inc**  
**FCC ID: S7A-SP142 / IC: 8154A-SP142**

To. Whom it may concern:

We are submitting an application for a class II permissive change to the FCC approval and IC approval.  
 We changed the following points from the original model.

**Change no. 1)**

Changed antenna connector location for MESH.



**Change no. 2)**

Add the below components.

: CA4, CA5, C37, C122, C123, C134, C135, C136, C137, C138, C139, C140, C141, C142

(This change has nothing to do with the RF function.)

Sincerely,



---

*Seunhyun Kim / Reasearch Engineer*