

SAR Plots

- Verification Plots
- SAR Test Plots

DT&C Co., Ltd.

DUT: Dipole 2450 MHz; Type: D2450V2; Serial: D2450V2 - SN:726

Communication System: UID 0, CW; Frequency: 2450 MHz; Duty Cycle: 1:1
Medium parameters used: $f = 2450$ MHz; $\sigma = 1.854$ S/m; $\epsilon_r = 39.697$; $\rho = 1000$ kg/m³
Phantom section: Flat Section

DASY5 Configuration:

Probe: EX3DV4 - SN3930; ConvF(7.69, 7.69, 7.69); Calibrated: 7/26/2021 Electronics: DAE3 Sn520
Sensor-Surface: 2mm (Mechanical Surface Detection)
Phantom: SAM-twin right_2022-03-18; Type: QD000P40CD; Serial: TP:1786
Measurement SW: DASY52, Version 52.10 (3); SEMCAD X Version 14.6.13 (7474)

Test Date: 2022-04-29; Ambient Temp: 20.3; Tissue Temp: 20.0

2450 MHz System Verification (100 mW)

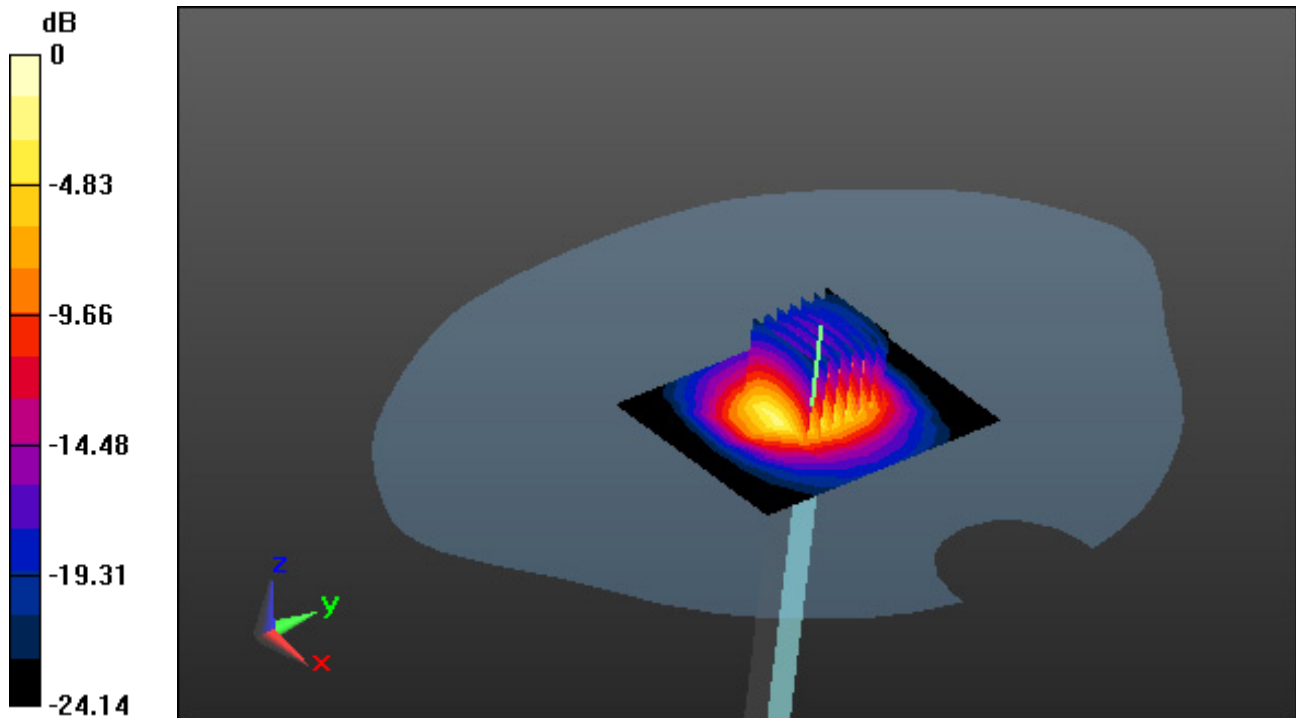
Area Scan (7x9x1): Measurement grid: dx=12mm, dy=12mm

Zoom Scan (7x7x7)/Cube 0: Measurement grid: dx=5mm, dy=5mm, dz=5mm

Power Drift = -0.09 dB

Peak SAR (extrapolated) = 11.6 W/kg

SAR(1 g) = 5.49 W/kg; SAR(10 g) = 2.49 W/kg



0 dB = 8.42 W/kg

DT&C Co., Ltd.

DUT: SP104; Type: Bluetooth Headset

Communication System: UID 0, Bluetooth (0); Frequency: 2441 MHz; Duty Cycle: 1:1.302

Medium parameters used: $f = 2441$ MHz; $\sigma = 1.844$ S/m; $\epsilon_r = 39.72$; $\rho = 1000$ kg/m³

Phantom section: Flat Section

DASY5 Configuration:

Probe: EX3DV4 - SN3930; ConvF(7.69, 7.69, 7.69); Calibrated: 7/26/2021 Electronics: DAE3 Sn520

Sensor-Surface: 2mm (Mechanical Surface Detection)

Phantom: SAM-twin right_2022-03-18; Type: QD000P40CD; Serial: TP:1786

Measurement SW: DASY52, Version 52.10 (3); SEMCAD X Version 14.6.13 (7474)

Test Date: 2022-04-29; Ambient Temp: 20.3; Tissue Temp: 20.0

1 cm space from Body, Rear, Bluetooth 1 Mbps Ch. 39, Ant Internal

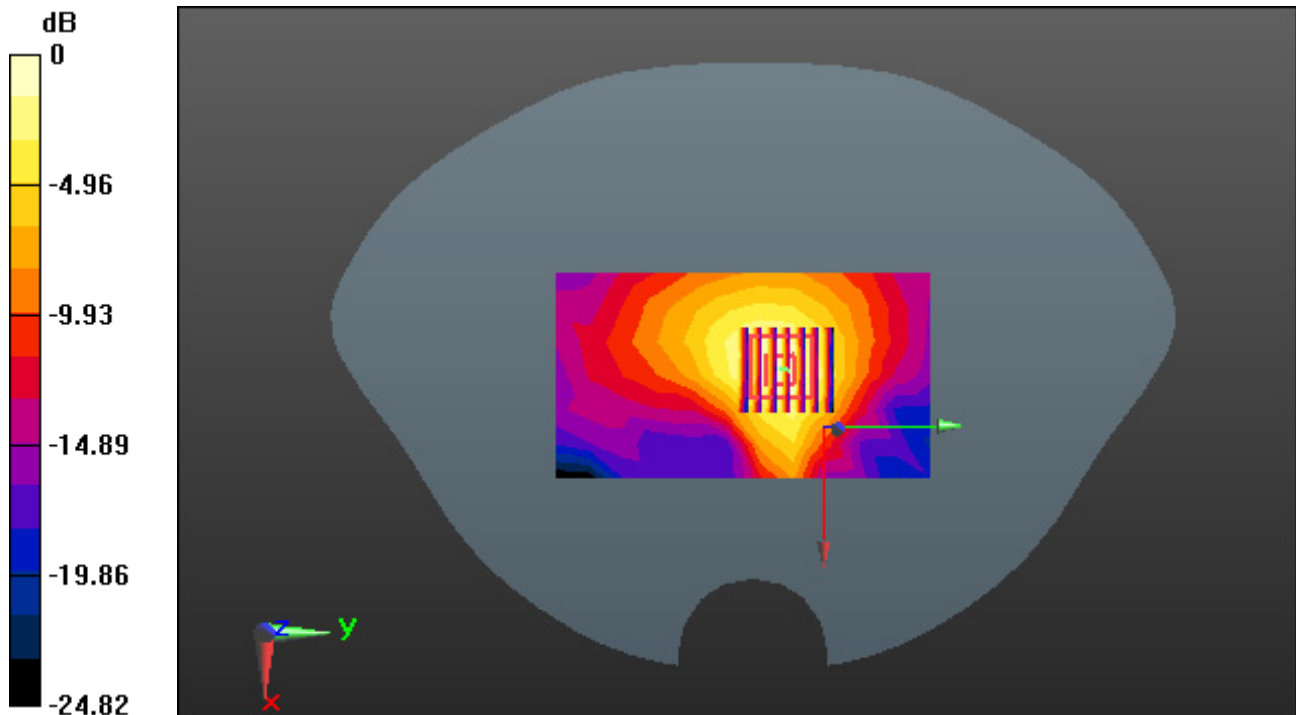
Area Scan (7x12x1): Measurement grid: dx=12mm, dy=12mm

Zoom Scan (7x7x7)/Cube 0: Measurement grid: dx=5mm, dy=5mm, dz=5mm

Power Drift = -0.04 dB

Peak SAR (extrapolated) = 0.202 W/kg

SAR(1 g) = 0.110 W/kg; SAR(10 g) = 0.057 W/kg



0 dB = 0.156 W/kg