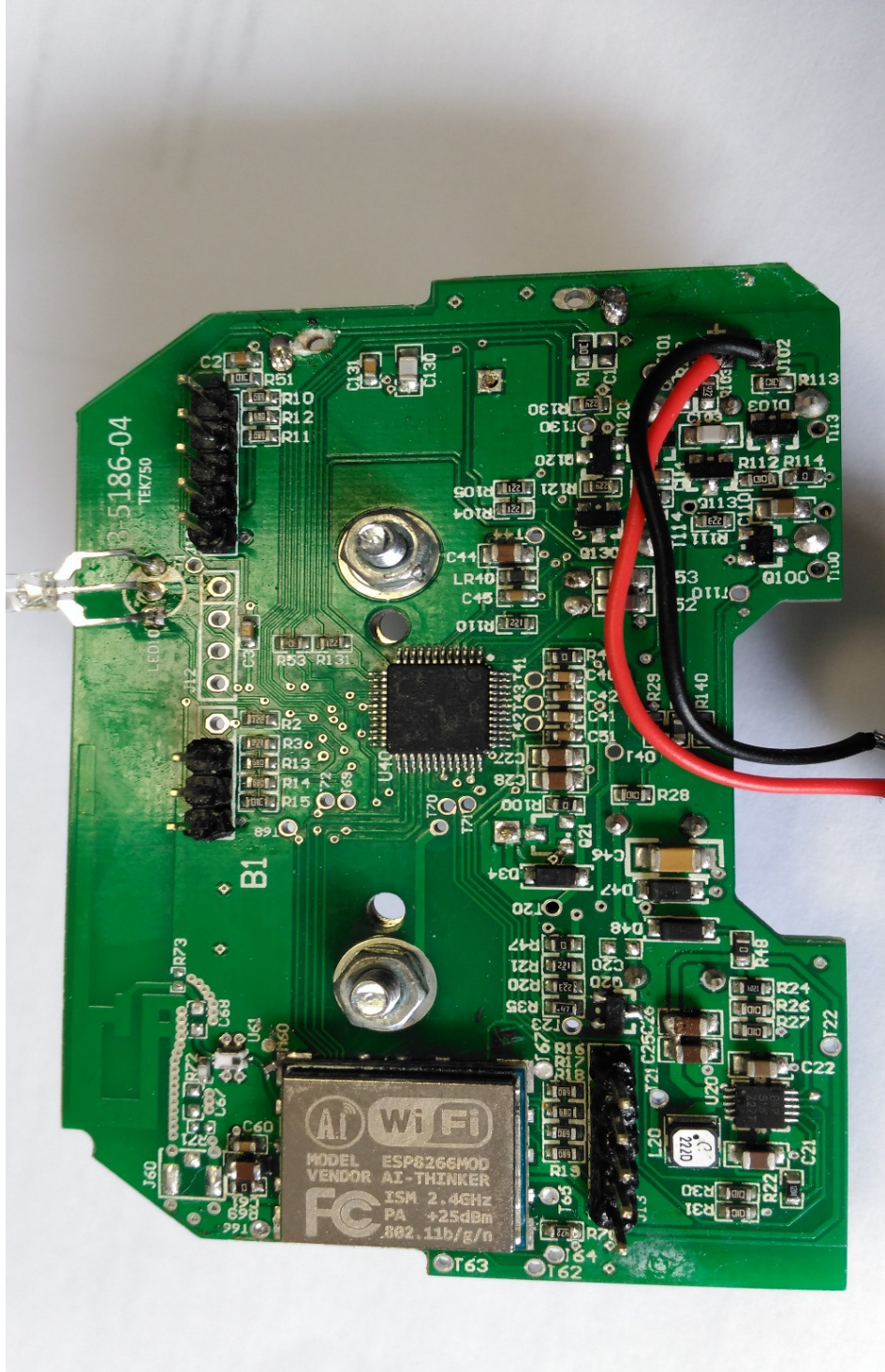
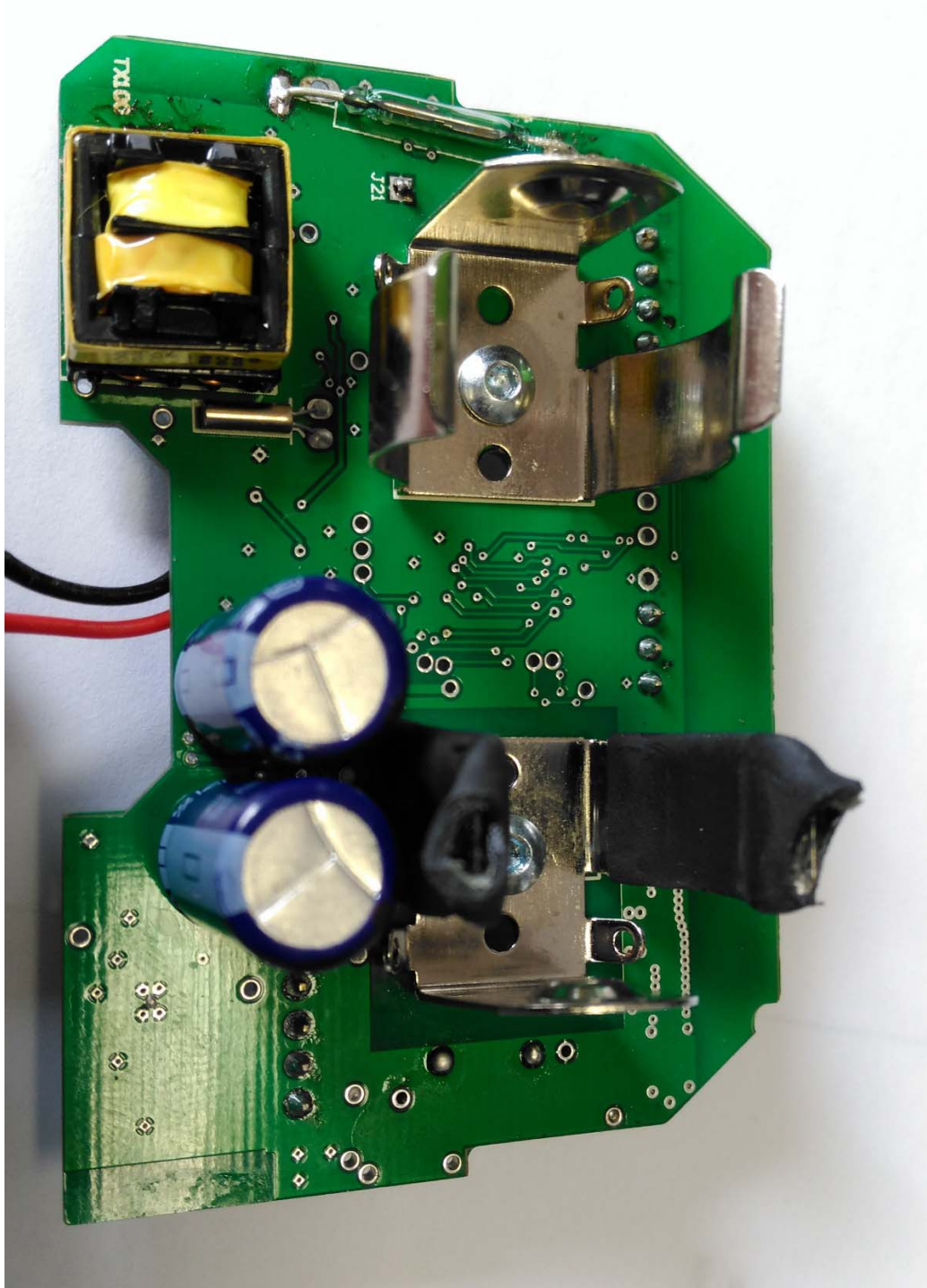


INTERNAL PICTURES:

PCB Top Side.



PCB BOTTOM side.

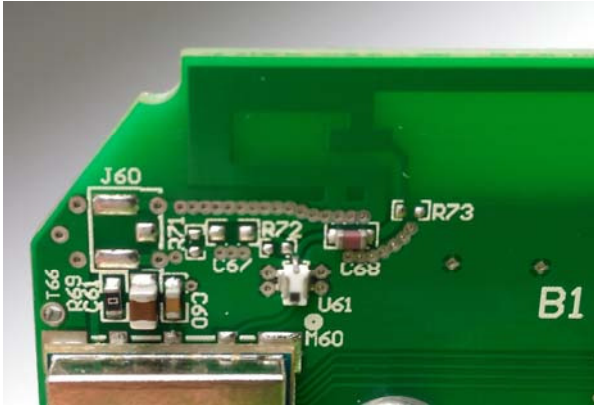


PCB with battery (lithium thionyl chloride) Ultrasonic transducer inserted in horn of enclosure.



### **Internal Antenna Connections:**

The internal antenna is the standard option. C68 is the coupling capacitor after the bandpass filter U61 which couples the WiFi signal to the internal inverted F antenna.



### **External Antenna option:**

The external antenna model (TEK750EXT) uses a reverse polarity SMA connector to couple to an external antenna. C68 is removed and C67 is added along with J60 (U.FL connector).



U.FL connector clipped onto PCB.

The external antenna is potted into a well on the plastic housing.



Antenna: Reverse SMA connection:



**Alfa 7 dBi gain RP-SMA directional panel antenna Wi-Fi APA-M04**



